

MISCELLANEOUS WEAVES.

(Prepared for BALDWIN'S TEXTILE DESIGNER.)

BY INTERESTED DESIGNERS AND WEAVERS.

This is a very pretty stripe, with sort of a diagonal running through the stripe.

WARP PATTERN.

- 1 $6\frac{1}{2}$ run dark olive, and 8 run white, D. & T. } 12 threads..
- 1 $4\frac{1}{8}$ run black. }
- 1 $6\frac{1}{2}$ run dark olive, and 8 run white, D. & T. }
- 15 $4\frac{1}{8}$ run black. }
- 1 $6\frac{1}{2}$ run black, and 8 run white, D. & T. } 12 threads.
- 1 $4\frac{1}{8}$ run black. }
- 1 $6\frac{1}{2}$ run black, and 8 run white, D. & T. }
- 15 $4\frac{1}{8}$ run black. }

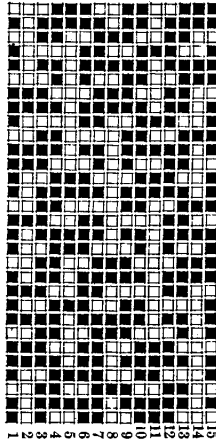
54 threads in pattern; 3888 ends in the warp. No. 10 reed, 6, 5, 5, 5, 6 to dent; 72 inches wide.

FILLING PATTERN.

- 2 5 run, dark blue.
- 1 $2\frac{1}{2}$ run, black backing.

3 threads in pattern; 68 picks.

WEAVE.



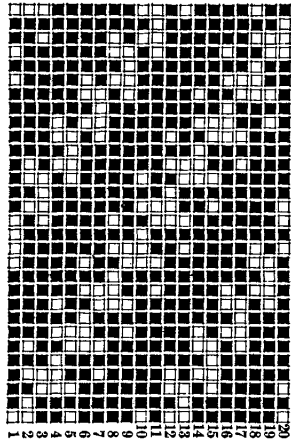
A diagonal for worsted coatings. Warp 6,800 ends of fine black, dark blue, or dark brown. This would produce a novel stripe for trouserings by using a worsted and silk twist in warp.

FILLING PATTERN.

- 2 fine black worsted.
- 1 3/4 run black backing.

3 threads in pattern; 156 picks.

WEAVE.

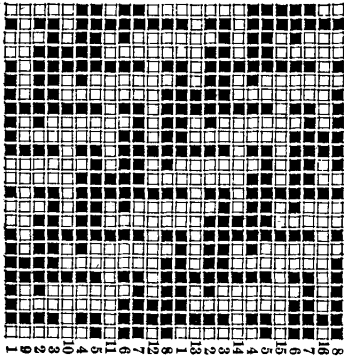


L. A.

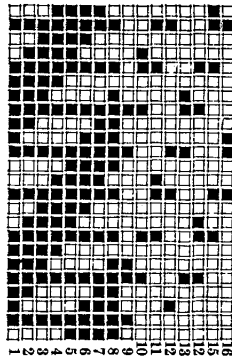
[We are obliged to leave out one weave sent in by "L. A." owing to its being a large Jacquard pattern requiring 56 harnesses and 168 bars; we could not get the length of it on the page. A sample accompanying the same shows it to be a broad diagonal wale for worsted coatings.—ED.]

An 8-harness worsted face with a 4-harness twill back.

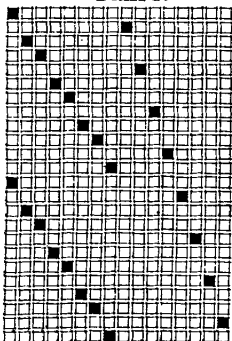
PICKOUT.



WEAVE.

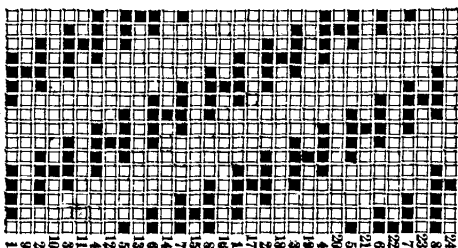


DRAFT.

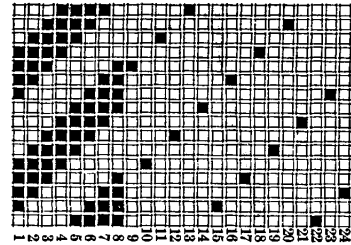


- Warp 6336 threads { 4224 worsted 2-42's
- { 2112 wool, 4 run.
- 16 reed, 6 threads in a dent.
- 64 inches in loom.
- 100 picks per inch.
- Finish, 56 inches.
- Dressing { 1 2-42's, worsted.
- & { 1 4 run wool.
- Weaving. { 1 2-42's, worsted.

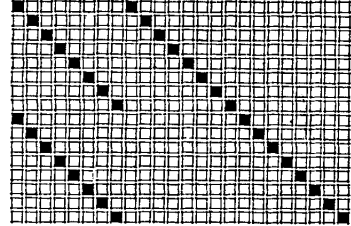
PICKOUT.



WEAVE.



DRAFT.



Warp, 8192 threads, { 4096 worsted 2-42's,

{ 4096 wool 4 run.

16 reed, 8 in a dent.

70 picks per inch, single 28 worsted.

Finish 56 inches.

Dressing of warp, 1 worsted 2-42's, 1 wool 4 run.

Huddersfield.