

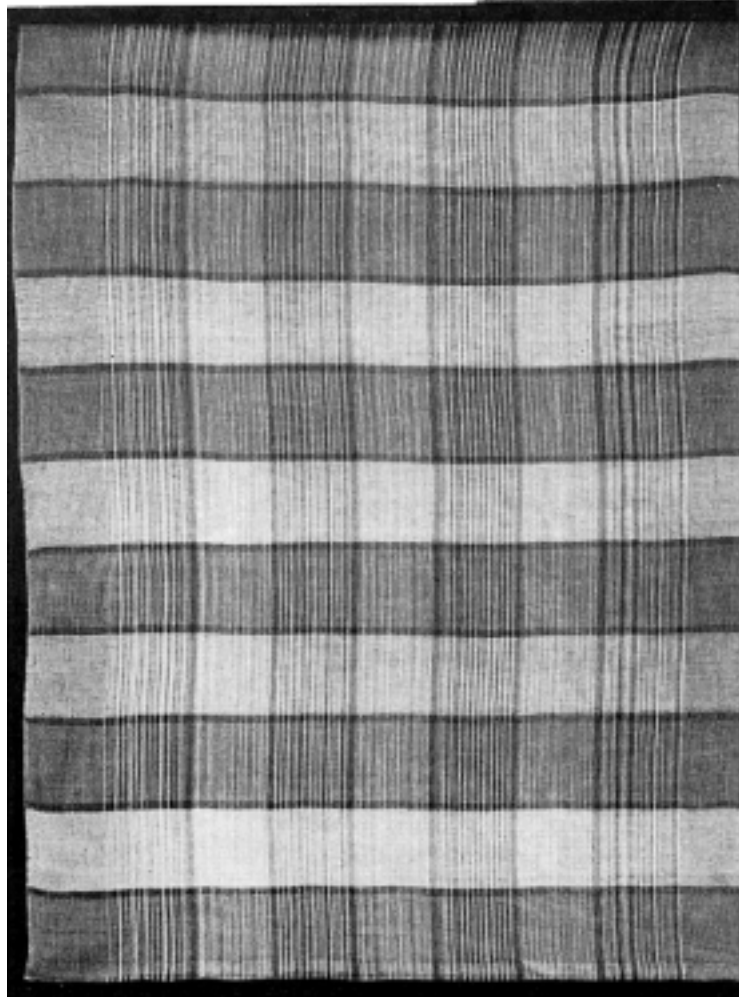
Colorful Linen Draperies

Designed and Woven

by Marie Phelps

EDITOR'S NOTE: *Every one who had a pre-view of these colorful draperies, designed and woven especially for the first issue of this magazine, commented upon the beautiful effect of the light on the material. The colors seemed to pick it up and transfer it into the room. Mrs. Phelps is daring in her use of color—and wishes all weavers would feel less hesitancy about combining colors in their designs.*

These are summer and winter draperies. Unlined, the crisp linen will let in the light, but keep out the glare of the sun—and its transparency is cool. With the proper lining, these draperies can be used conveniently in winter.



THIS material, made of groups of cool and warm colors, can be used in almost any room. It will blend well with white, cream, yellow, green, pink or blue walls. Woven of linen, it is strong, crisp and washable. The warp is set at 16 dents to the inch but to make the material heavier one could set the same warp at 30 to the inch, adding ends, of course. Or one could use the same reed, No. 16, but make the warp of linen 20/2 and weave it with 20/2 linen also.

It is a good material to weave to use all the linen left over from other weaving. Mix sizes and colors.

Executed in tabby, this material can be woven on any kind of loom, altho a counterbalanced loom was used in this case.

WARP: 480 ends, 5 yards long. After weaving it is 4 yards and 8 inches long approximately.

The warp is made of linen 40/2, 20/2, 12/2.
The colors are divided into 2 groups.

GROUP 1, cool colors: 20/2 Hunters Green
20/2 Lime
40/2 Aquamarine
40/2 Foam Green

GROUP 2, warm colors: 20/2 Scarlet
20/2 Buttercup
40/2 Araby Rose
40/2 Coralin

12/2 Tobacco Brown is used to separate the groups.

WARPING ORDER: 56 ends 12/2 Brown and 40/2 Buttercup, alternating 1 Brown, 1 Buttercup

A—52 ends Group 1, the 4 colors being warped together
4 ends 12/2 Brown
48 ends Group 2 warped as in A
4 ends Brown
48 ends Group 1 as in A
4 ends Brown
48 ends Group 2 as in A
4 ends Brown
48 ends Group 1 as in A
4 ends Brown
48 ends Group 2 as in A
4 ends Brown
52 ends Group 1 as in A.
56 ends 12/2 Brown and 40/2 Aquamarine alternating

Draft: TWILL, 1, 2, 3, 4, and repeat

Reed: 16 dents to the inch, one end in each dent

Warp entering in the reed: 56 ends, border, 1 Brown, 1 Buttercup alternating
52 ends group 1 enter hit and miss fashion
4 ends Brown
48 ends group 2, enter hit and miss fashion and so on

Weaving material: 20/1 Tobacco Brown
 40/2 linen in: Foam Green
 Aquamarine
 Coralin
 Buttercup

All the weaving is done in tabby: 1 & 3, 2 & 4 in counter-balanced looms

Weaving: a—3 inches Foam Green
 7 shots Brown
 3 inches Coralin
 7 shots Brown
 3 inches Foam Green
 7 shots Brown
 3 inches Aquamarine
 7 shots Brown
 3 inches Foam Green
 7 shots Brown
 3 inches Buttercup
 b—7 shots Brown

Repeat a to b to the end of the warp

Finishing: Soak in warm water, hang to drip, do not wring, iron dry.

Approximate amount of linen needed:

WARP: 12/2 Tobacco Brown	3 1/2 ounces
20/2 Hunters Green	1 1/4 ounce
Lime	1 1/4 ounce
Scarlet	1 1/4 ounce
Buttercup	1 1/2 ounce
40/2 Aquamarine	1 ounce
Foam Green	3/4 ounce
Araby Rose	1/2 ounce
Coralin	1/2 ounce
WEFT: 20/1 Tobacco Brown	1 1/2 ounce
40/2 Foam Green	3 1/2 ounces
Aquamarine	1 ounce
Buttercup	1 ounce
Coralin	1 ounce