

Gleanings from the Penland Institute

ARTICLE I — PILLOW TOPS

BY LUCY MORGAN

AS ONE grateful member of Mr. Edward F. Worst's institute conducted each year at Penland, I would like to share with those who could not be with us some of the things taught in last summer's classes. Twenty-two looms were threaded with as many interesting weaves, requiring from two to ten harness shafts, and some of them were threaded two and three times during the two weeks. New weavers, weavers with little experience, and veteran weavers who came for new vision and new enthusiasms, sat at looms on the long porch and played, not on a harp of a thousand strings, but on looms with a thousand charms, and made music in the souls of the creators of beauty.

It would take many issues of *THE HANDICRAFTER* to tell of all the things taught and accomplished, and in this issue we are going to speak of pillow tops. There were pillow tops worked out from patterns with which we are all familiar, but perhaps few of us had taken the time to arrange them with borders to fit a pillow. Since attractive pillows or cushions add to the comfort and beauty of any room, the problem is one that appeals.

Let us take first the summer and winter pattern, Pine Trees and Snow Balls.

This is woven on Bernat's 20/2 white cotton warp, 30 ends to the inch, No. 15 reed, 2 ends to each dent. For filler, Bernat's indigo blue is used for the pattern thread, and 20/2 white cotton for binder. Another happy combination was a Nile green Lady Helen for pattern, and Nile green Senna for binder.

Incidentally, while the loom is threaded for this pattern

other articles can be made such as wall hangings, with a few extra repeats for the center. These done in colors to harmonize with the room in which they are to be used, will add interest and beauty to any room or studio.

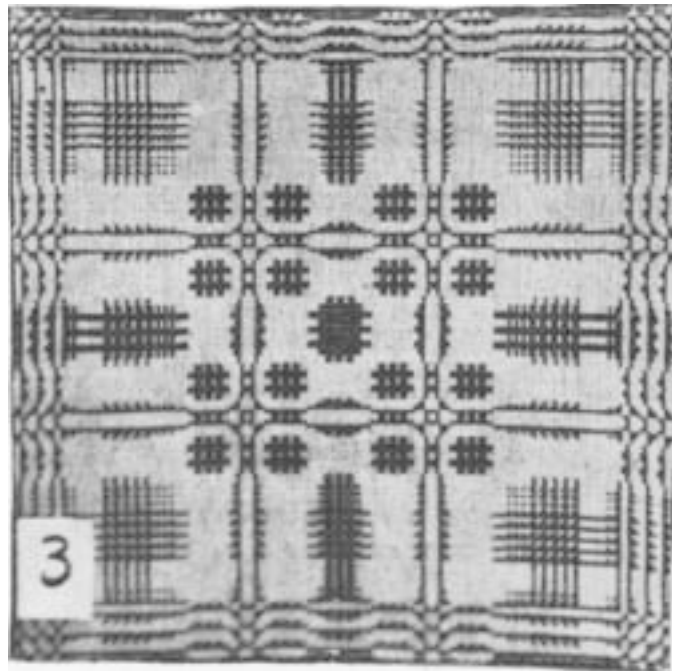
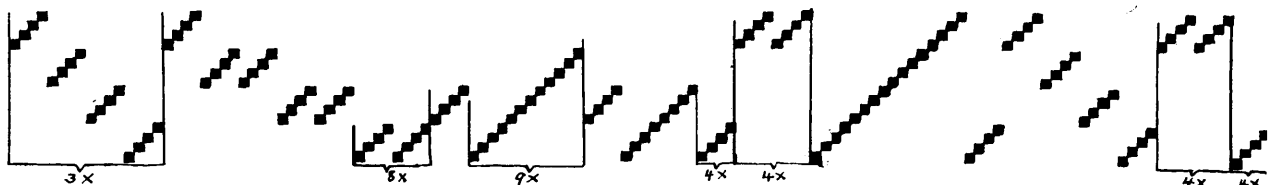
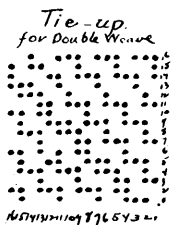
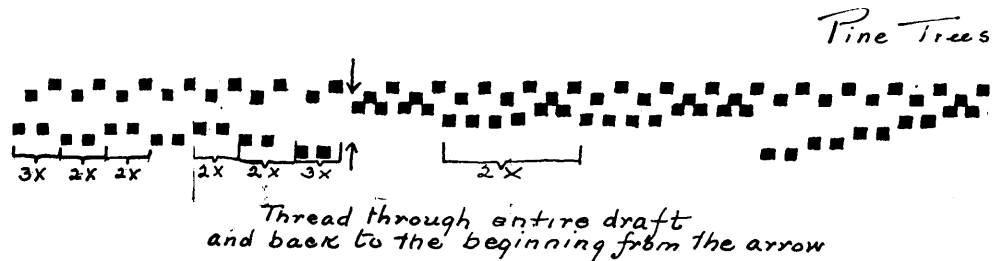
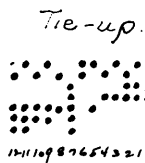


ILLUSTRATION No. 1



TRAMPING DRAFT FOR PILLOW TOP IN ILLUSTRATION NO. 1

When weaving, press down treadles in the following order:

- | | |
|--|-------------------|
| 1 then 2 — 1X | } — 3X |
| 3 “ 4 — 1X | |
| 5 “ 8 — 1X | |
| 9 “ 10 — 1X | |
| 11 “ 12 — 1X | |
| 1 “ 2 — 1X | |
| 3 “ 4 — 1X | |
| 11 “ 12 — 1X | |
| 9 “ 10 — 1X | |
| 5 “ 8 — 1X | |
| 9 “ 10 — 1X | |
| 5 “ 8 — Tree trunk. Repeat until the trunk is the same as side trunk | |
| 11 “ 12 | } — 5X — branches |
| 9 “ 10 | |
| 5 “ 8 | |
| 9 “ 10 — 1X | |
| 5 “ 8 — 1X | |
| 9 “ 10 — 1X | |
| 5 “ 8 — 1X | |
| 9 “ 10 — 1X | |
| 5 “ 8 — 3X — top of tree | |
| 3 “ 4 — 2X | } — 2X |
| 1 “ 2 — 2X | |
| 3 “ 4 — 2X | |
| 5 “ 8 — 1X | |
| 9 “ 10 — 1X | |
| 11 “ 12 — 1X | |
| 1 “ 2 — 1X | |
| 3 “ 4 — 2X | |
| 1 “ 2 — 1X | |
| 11 “ 12 — 1X | |
| 9 “ 10 — 1X | |
| 5 “ 8 — 1X | |

- | | |
|---------------|--------|
| 3 then 4 — 2X | } — 2X |
| 1 “ 2 — 2X | |
| 3 “ 4 — 2X | |
| * * * | |
| 5 then 8 — 2X | } — 3X |
| 9 “ 10 — 2X | |
| 11 “ 12 — 2X | |
| 9 “ 10 — 2X | |
| 5 “ 8 — 2X | |

Weave to end of draft and then back to the beginning from * * *.

As shown in Illustration No. 2 a pattern similar to that shown in Illustration No. 1 has been worked out in a 16-harness, 16-treadle double weave, according to the draft shown across the bottom of these two pages.

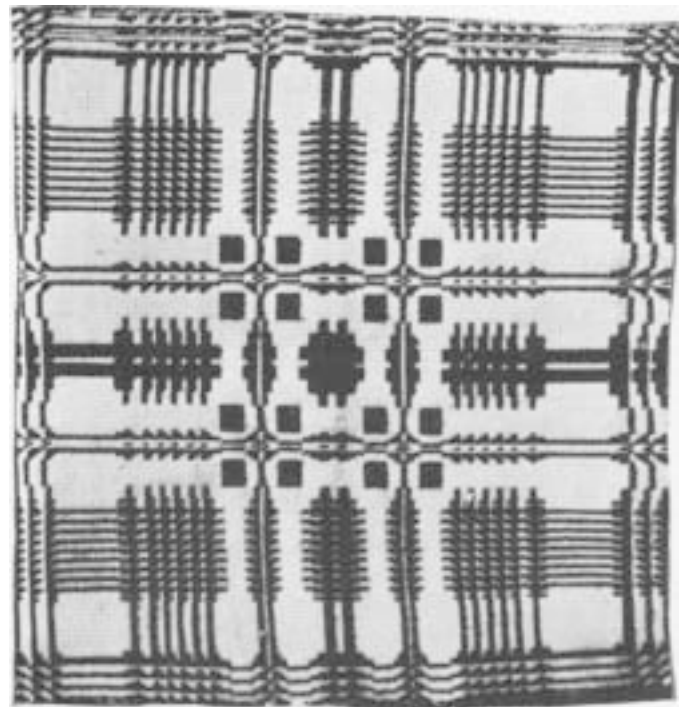
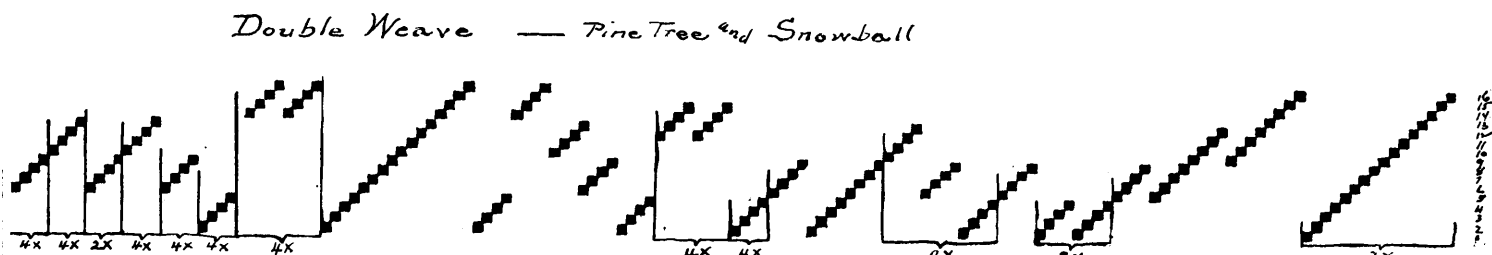
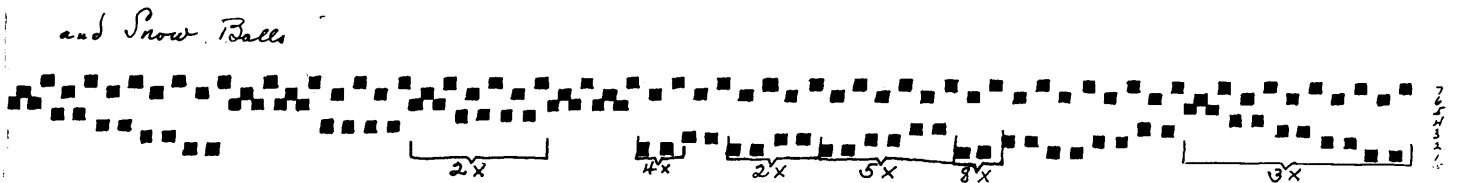


ILLUSTRATION NO. 2



WEAVING SECTION

WHIG ROSE

An old favorite, and one that lends itself well to our purpose is Whig Rose, in the usual four harness weave. This pattern adapts itself well to a variety of color combinations, and can be used sometimes with the right side for the top, and sometimes the reverse side.

The pieces in illustrations No. 3 and No. 4 were done on a

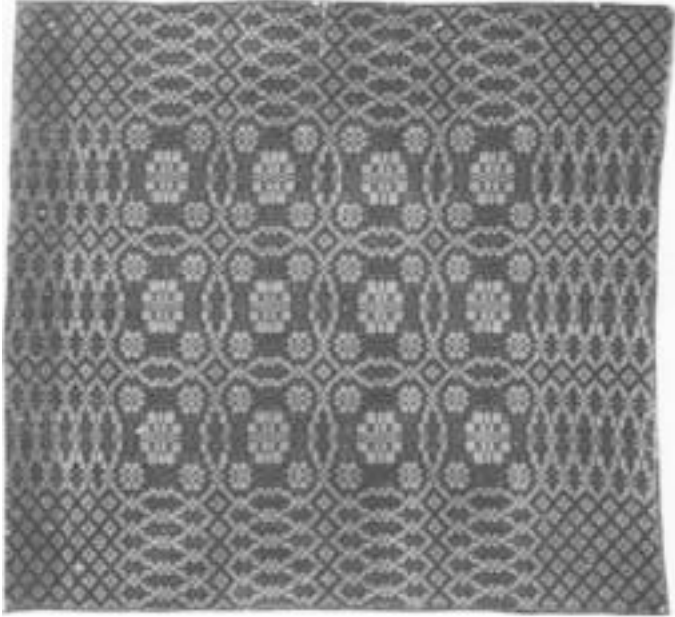


ILLUSTRATION No. 3

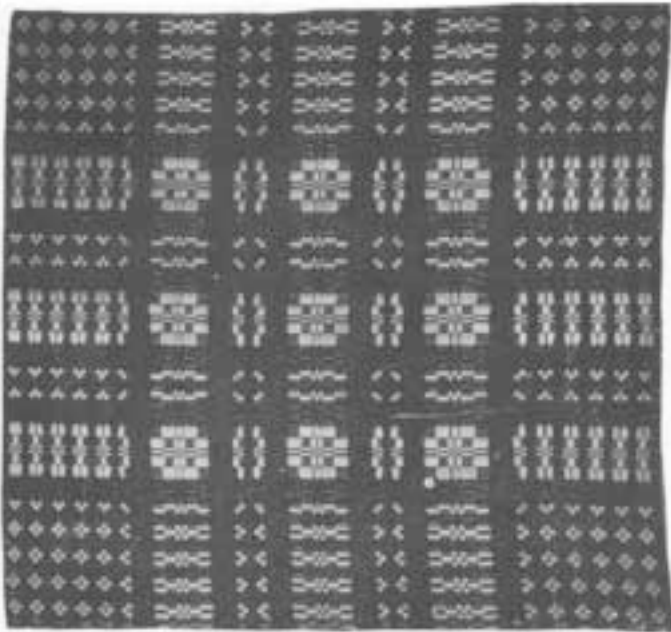


ILLUSTRATION No. 4

20/2 white cotton warp, 24 threads to the inch, No. 12 reed, 2 ends to each dent. Bernat's homespuns were used for filler.

The old soft colors our ancestors made in vegetable dyes are well suited to these old coverlet designs, and Bernat's homespuns are of these same old colors, and fortunately they are fast. There is all the range of the autumn colors, through the tans, yellows, orange, russet, browns, greens, that can be used in this pillow top without breaking the design too much. And that is only one range of color. There are new possibilities as long as one can sit at the loom and play.

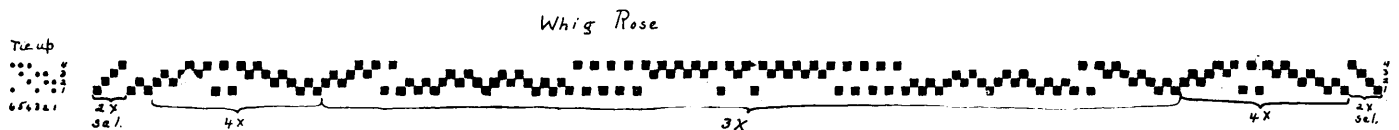
TRAMPING DRAFT FOR WHIG ROSE

When weaving, press down treadles in the following order:

6 — 2X	} — 5X	2 — 2X
5 — 2X		1 — 3X
6 — 2X		2 — 2X
1 — 2X		1 — 3X
2 — 2X		2 — 2X
1 — 2X		5 — 2X
6 — 2X		6 — 2X
5 — 2X		1 — 2X
* * *		2 — 2X
2 — 2X		6 — 2X
1 — 3X		5 — 2X
2 — 2X		Repeat from * * * to
1 — 3X		form center.
2 — 2X		Ending
5 — 2X		6 — 2X
6 — 2X		1 — 2X
5 — 2X		2 — 2X
6 — 2X		1 — 2X
5 — 2X		6 — 2X
6 — 2X		5 — 2X
5 — 2X		6 — 2X

SPRING FLOWERS

A pillow top suitable for boudoir or for baby pillows is one done in the dainty Spring Flowers design. The one in illustration No. 5 is done on a white or cream Perle 20 warp, 30 ends to the inch, and is threaded in a No. 15 reed, 2 ends to each dent. Bernat's baby blue Senna is used for pattern, and white Senna for binder. This can be varied by using a different color for the border. It may be threaded with blue or pink for the border, using white for the body of the pillow, if it is for the baby, and the size can be cut down by using fewer repeats. If it is to be used for the bedroom, any two harmonizing colors may be used.



TRAMPING DRAFT FOR SPRING FLOWERS

When weaving, press down the treadles in the following order:

5 — 1X	} — Front Selvage	2 — 1X	} — Repeat as many times as desired
2 — 1X		5 — 1X	
1 — 1X		2 — 1X	
6 — 1X		1 — 1X	
5 — 1X		6 — 4X	
2 — 1X		1 — 1X	
1 — 1X	2 — 1X	} — 6X	
6 — 1X	5 — 1X		
1 — 2X	2 — 1X		
2 — 2X	1 — 1X		
5 — 2X	6 — 4X		
2 — 2X	* * *		
1 — 2X	1 — 2X	} — Repeat as many times as desired	
6 — 4X	2 — 2X		
1 — 1X	5 — 2X		
		2 — 2X	

Repeat from * * * back to beginning.

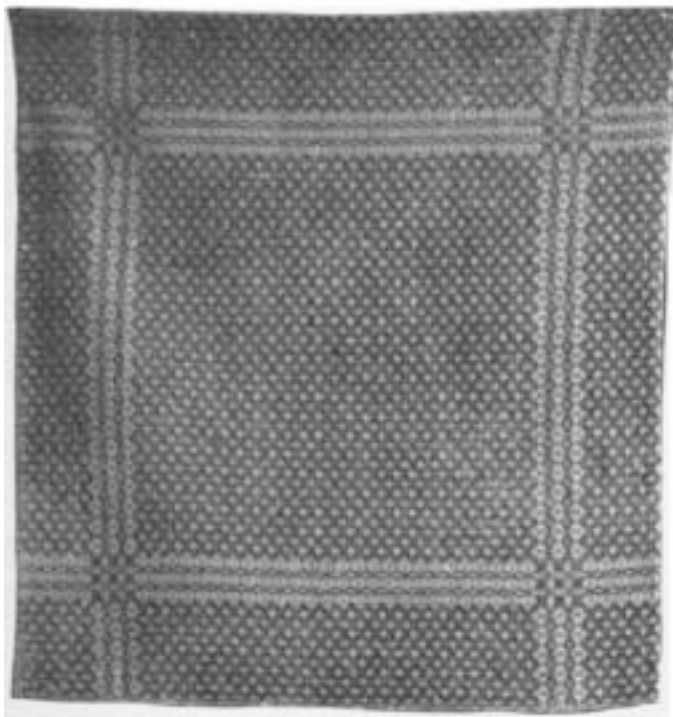


ILLUSTRATION No. 5

A CRACKLE WEAVE

The Crackle weave shown in illustration No. 6 has been one of the popular patterns for several institutes. This pattern is done in both a five harness, and a four harness set-up, and although it is very lovely done on a four harness loom, it is even more attractive in a five harness weave.

An exceedingly attractive pillow top can be done in this weave using Bernat's tan Perle 10 for warp and binder, and Bernat's Art Silk in henna or mulberry for the pattern thread. Thread 30 ends to the inch, No. 15 reed, 2 ends to each dent.

For upholstery, this weave makes an especially firm and durable material.

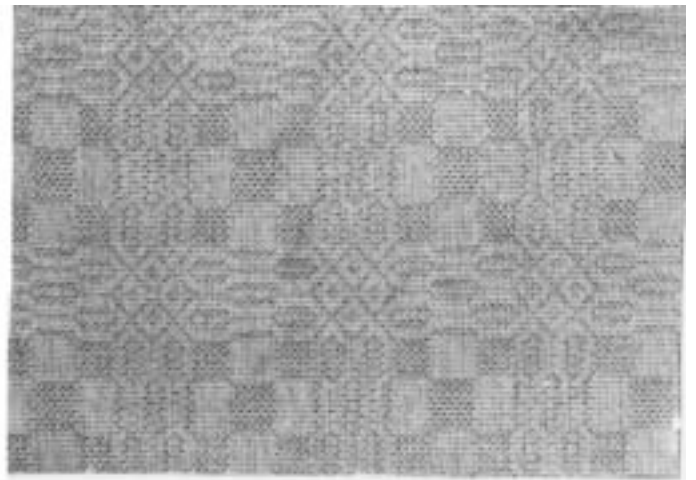


ILLUSTRATION No. 6

TRAMPING DRAFT FOR CRACKLE WEAVE

When weaving, press down treadles in the following order:

5 then 6	} — 8X	5 then 6	} — Repeat as often as desired	
2 " 1		2 " 1		
5 " 6		5 " 1		
1		2 " 6		
* * *		5 " 1		
2 then 1	} — 4X	* * *		
5 " 6		} — 11X		
5				
1 then 2	} — 4X	<i>Ending</i>		
1		2 then 1		2 then 1
5 " 6	} — 1X	5 " 6		5 " 6
2 " 1		5 " 1		5 " 1
5 " 1		2 " 1	2 " 1	
2 " 6		6 " 5	6 " 5	
5 " 1		1 " 2	1 " 2	
		6 " 5	6 " 5	

SPRING FLOWERS



CRACKLE WEAVE

