

FIFTEEN HATS WITHOUT FEATHERS

ILLUSTRATIONS FROM PHOTOGRAPHS

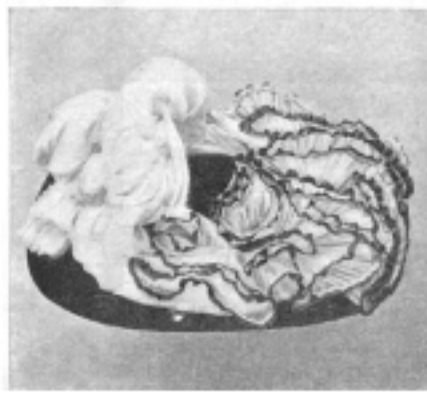
The hats which are illustrated on this page are to be the leading styles of the coming fall and winter seasons. They are the advance models of the most prominent milliners, and have been trimmed without feathers of any description.



GAINSBOROUGH PICTURE HAT of gray mauve velvet finished with heavy cord on edge, and trimmed with a cluster of mauve China asters.



A **DRESSY TOQUE**, suitable for evening wear, of black felt braid. The bow is of turquoise satin ribbon, and the brim made of forget-me-nots.



BLACK EMPIRE SHAPE with ruching of black and white mousseline de soie. Rosette on left side of white chiffon, black satin rosettes in the back.



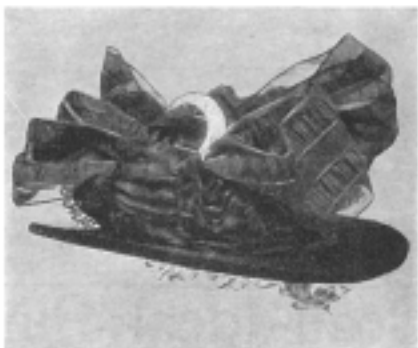
NAVY BLUE FELT SAILOR trimmed with three bunches of navy blue poppies. A full bow and loops of blue glacé silk are placed in front.



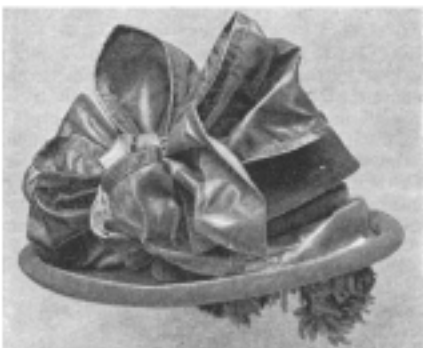
BLACK DRAPED AFTERNOON HAT, of draped velvet, side bow of black satin ribbon, and Rhinestone buckle and satin antique rosettes in the back.



BROWN SATIN GAINSBOROUGH, to be worn off the face. The trimming is of ribbon rosettes in yellow, brown and white.



BLACK VELVET-FACED HAT, worn over the face, with mousseline de soie, Alsatian bow of black gauze ribbon, steel buckle and pink velvet roses in the back.



"**THE COLLAR-AND-CUFF HAT**" of gray felt. Collar of gray velvet and taffeta with bow made to represent a cuff in front; purple flowers in the back.



USEFUL FOR ALL OCCASIONS. A black braid, faced with mode braid, draped velvet on brim; beige taffeta silk ribbon bow and steel ornaments.



TAILOR-MADE MOURNING HAT of gray felt. Band of black velvet and tulle around the brim; high velvet bow in front, velvet rosettes in the back.



TO BE WORN WITH FURS, made of black velvet, brim slightly turned down in the back, appliquéd black and white lace; bunch of violets at the side.



BLACK OPERA TOQUE composed of black braid, with a cream-colored lace brim, and a very full Louis Quinze bow of pink velvet.



BLACK FELT SAILOR SHAPE, with green velvet bow in front; collar of black velvet; rosettes, also of the velvet, in the back.



BLACK TWO-TONED FELT SAILOR, balloon trimming of mauve silk, appliquéd with renaissance lace; poppies of mauve color in the back.



CONTINENTAL REGIMENTAL HAT of black felt orata, trimmed on the side with a bow of three shades of green taffeta; rosettes of same in the back.