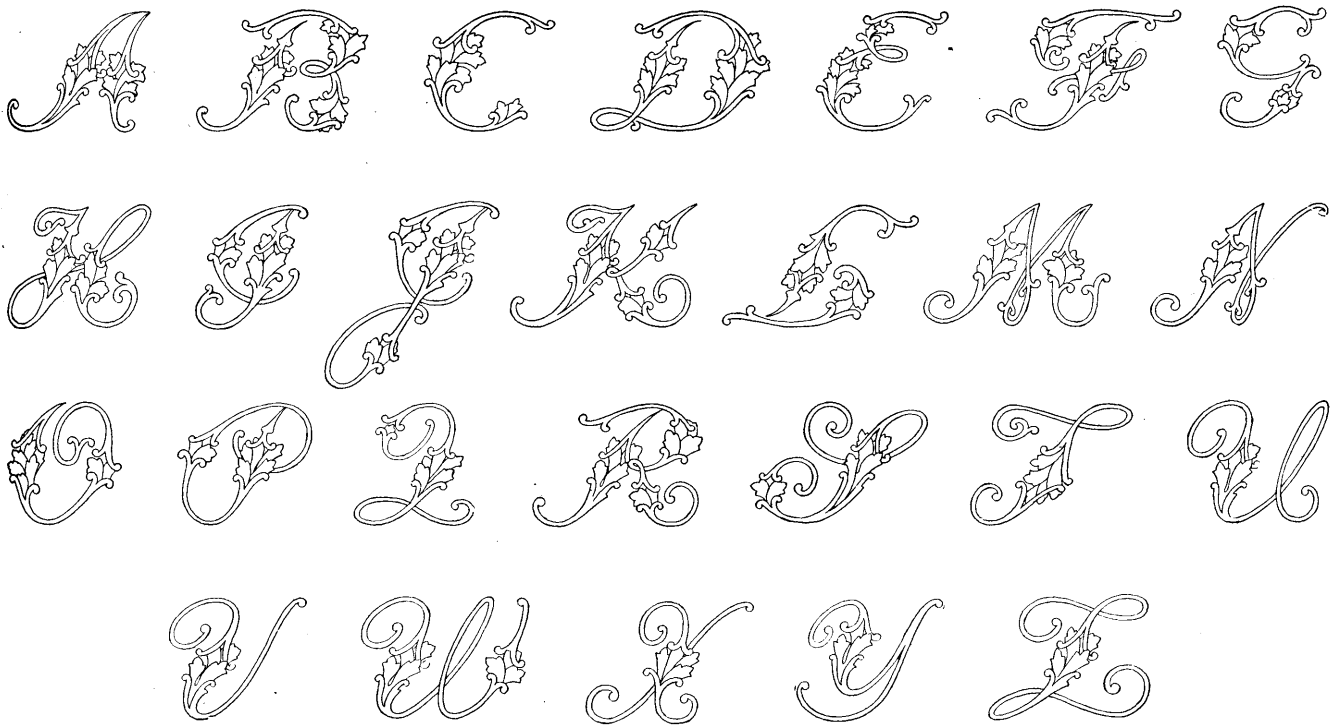


THREE SETS OF INITIALS FOR LINEN

Designed Especially for the Journal

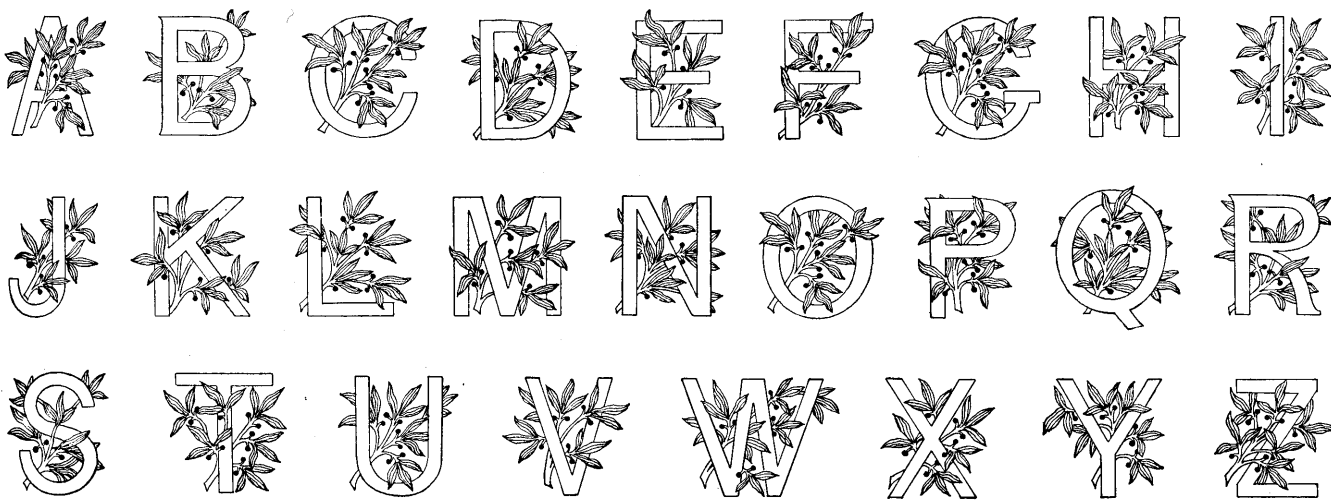


IT HAS become the custom in recent years to embroider the initial or initials of the owner upon almost every article of personal and household use. It is a charming fashion, and quite a usual one, to select a certain style of letter and use it to the exclusion of all others, thus securing an individuality for one's belongings. The sets of initials which are given

SHEETS, pillow-cases and towels are worked in the centre of one end, half an inch from the edge of the hem. The initial or initials on table-cloths are usually embroidered across one corner about half an inch above the hem.

In embroidering these initials each one should first be traced, the design filled thoroughly and then embroidered with either

MOST women prefer to embroider over a hoop. A pair of embroidery hoops may be bought at any fancy-goods shop, and narrow strips of soft cotton be wound securely around each one. The article to be embroidered is laid over the smaller hoop, the larger one is then tightly pressed over the linen and the smaller hoop, making the linen surface which is to be worked upon tight and



upon this page are all simple in design, easy of construction, and so definite in outline as to be easily distinguishable—a characteristic which is, or should be, the most important of all in a letter which is to denote the individual ownership of a particular article.

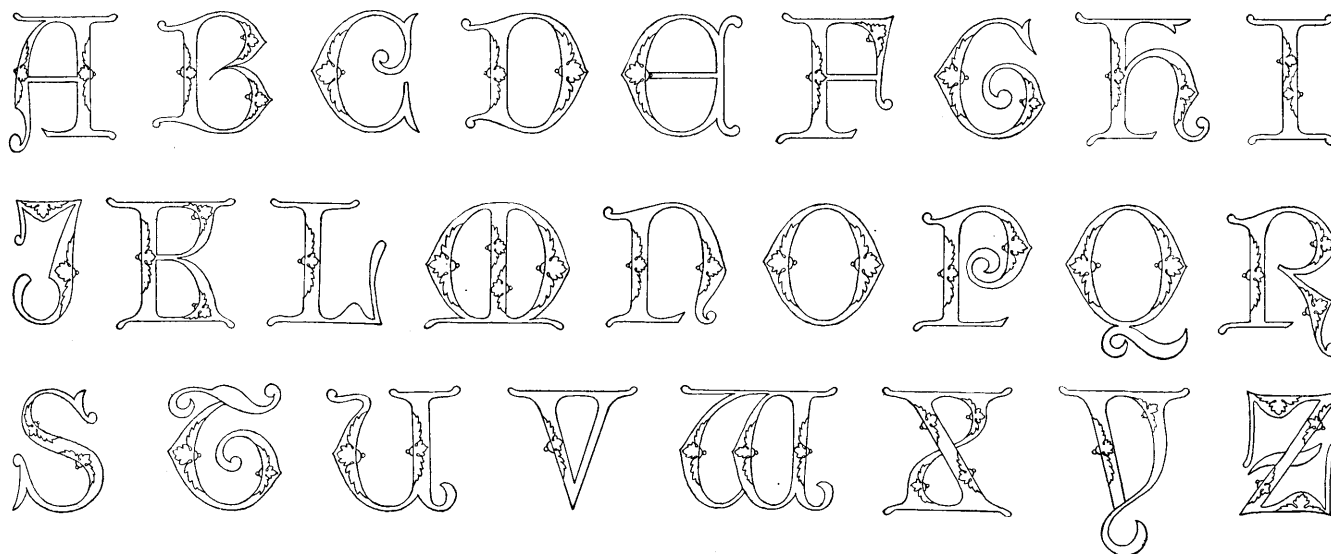
The initials given may be utilized on pocket handkerchiefs, underclothing for both

white linen floss or white silk filosele. The stitches should be made to lie very closely together and the outline kept very distinct.

THE set of laurel initials which is given may, if desired, be embroidered in pale green and white, or pale blue and white, the

smooth. In embroidering, the needle is passed up and down over the design, with the result that the work is perfectly flat and free from any puckering.

When the initial is embroidered it should be laid right side down on a piece of heavy flannel, covered with a piece of damp cheesecloth and pressed with a hot iron.



women and men, bed-linen, table-linen, and men's hatbands. Upon handkerchiefs and table napkins the initial should be embroidered in one corner with the top of the letter pointing to the centre of the article being marked, and the bottom about half an inch from the hem. A simple way to mark handkerchiefs is to outline tiny initials that have been written in one corner with a lead pencil.

leaves worked in solid embroidery, and the stems be slender, well-defined lines of outline stitch. This set will prove particularly dainty for a young girl's personal use. A pretty idea and a new one is to embroider the initials of the owner upon the loops by which either jacket, skirt or bodice is hung. The girl who takes pride in her belongings will find time to individualize them.

INITIALS are often embroidered upon pieces of ribbon and fastened inside of men's and boys' hats. Pieces of ribbon so adorned make very acceptable and inexpensive birthday and holiday gifts for sister, wife, mother or daughter to give to any one of their male relatives. The initials given may be still further utilized by embroidering them upon school-bags and lawyers' bags.