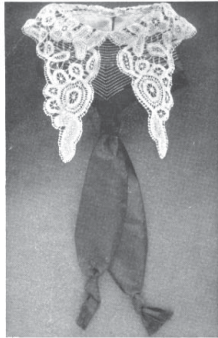
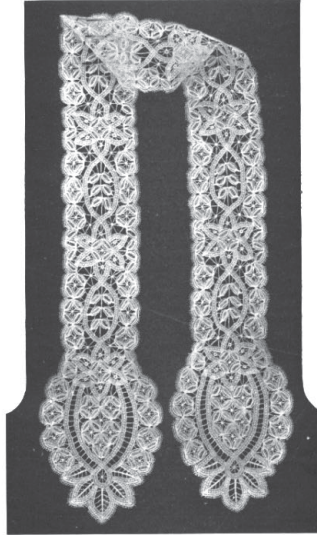


New Little Things in Lace

Designed and Described by Sara Hadley



LADY FRANCES COLLAR
This collar of needle point lace is one of the latest styles for early spring. To be worn over a pointed stock.



PRINCESSE LACE SCARF
The lace scarf illustrated may be reproduced in white, cream or écreu. It may be worn closely around the neck or pinned at the throat, with ends hanging below the belt.



SIDE POCKET IN POINT LACE
This dainty side bag of black point lace over white satin may be worn with either an afternoon or evening dress.



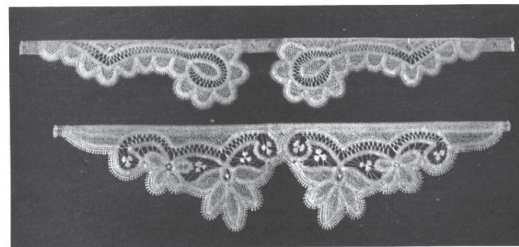
FAN BAG OF SATIN AND LACE
Lace of cream, white or black, or white and gold may be used to reproduce this pretty fan bag.



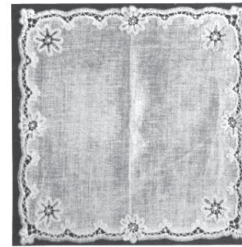
STYLISH HEADRESS
The point lace headress illustrated is fifteen by five and a half inches over all. If preferred the lace can be made by appliqueing the flowers to Brussels net, omitting the stitches.



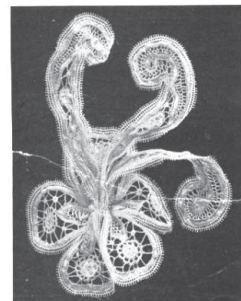
SHADE FOR CANDELABRA
This candelabra shade of princesse lace is one of a set intended for an Easter table.



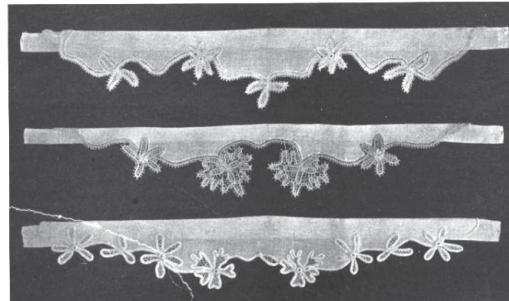
PROTECTION COLLARS IN POINT LACE
Point lace is used for these collars. The upper one is made with cream braid and white thread. The lower one is of white braid with cream thread. These little protection collars make most attractive and useful Easter gifts, and may be made of heavier braid and thread if preferred.



HANDKERCHIEF IN MODERN POINT
This pretty handkerchief in modern point is one of a set of four intended for an Easter table. Each handkerchief has a different border.



LACE FLOWER FOR THE HAIR
This flower of Duchesse lace is stiffened with wire to suit the style of coiffure. It may be made in cream, or white and gold.



SHIRT-WAIST COLLARS OF LINEN AND LACE
These three protection collars are made of substantial materials that will stand frequent laundering. The upper one is made of heavy white linen and cream-colored cord braid, the centre one of pink linen with white loop braid, and the lower one of blue linen with white tape braid.