

METHOD OF MAKING A LENO STRIPE IN TAPESTRY
COURTESY OF THE AMERICAN MUSEUM OF NATURAL HISTORY

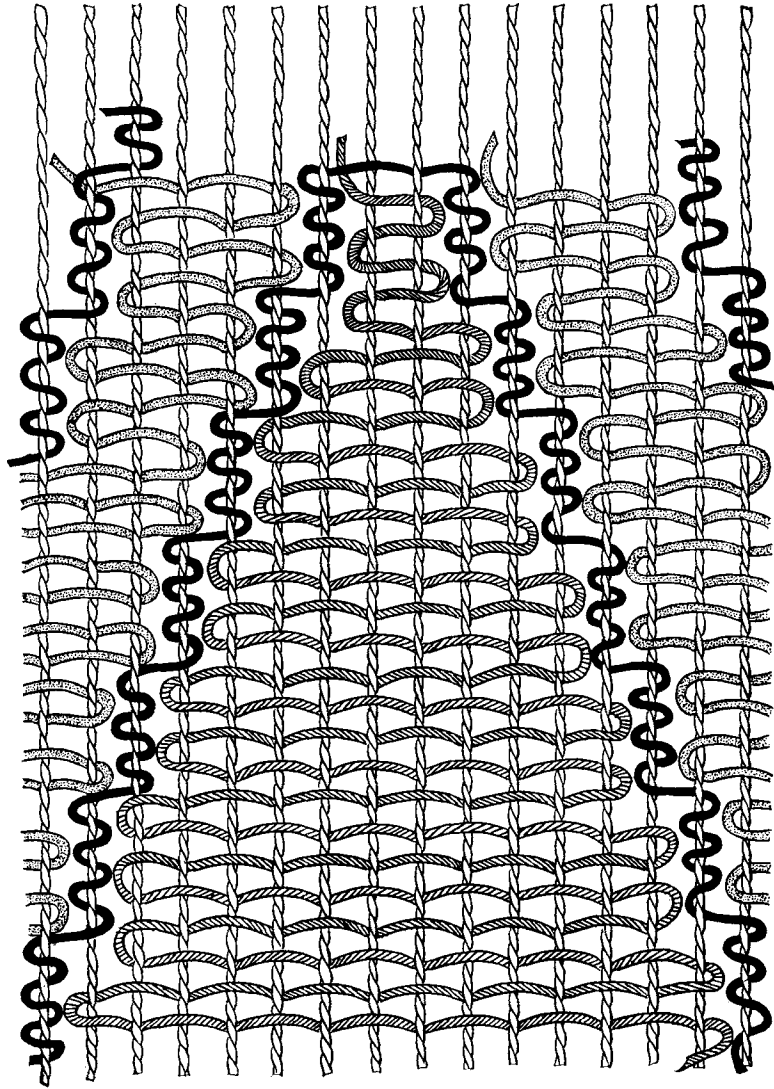


PORTION OF A TAPESTRY BELT

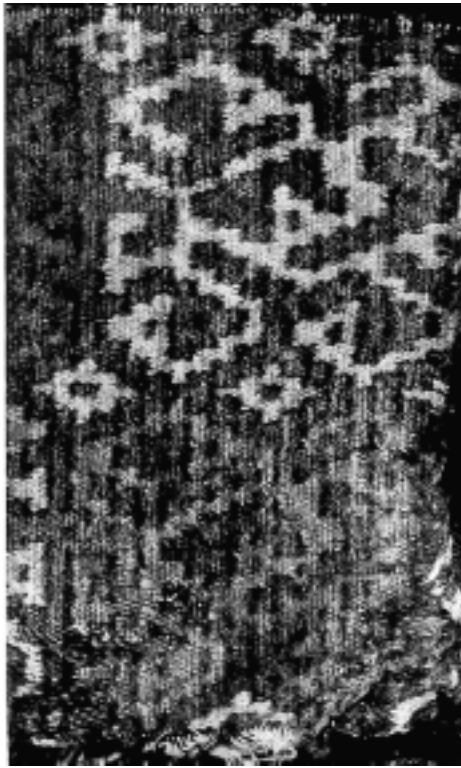
DIAGRAMS OF PERUVIAN WEAVES

THE Club is indebted to the American Museum of Natural History and to Mr. M. D. C. Crawford for the courtesy extended in permitting the reproduction of the accompanying plates from Mr. Crawford's article on Peruvian Textiles published in the Anthropological Papers of the Museum (Vol. XII, Part IV, 1916).

These diagrams will be of value to those of our members who weave, as the interlocking weft, the method of making the Leno stripe, and that of outlining motives by wrapping the warp threads with an additional color suggest interesting possibilities.



METHOD OF OUTLINING THE FIGURES WITH BLACK WEFT
WRAPPED AROUND THE WARP



TAPESTRY FROM NAZCA IN WHICH
ALL WEFTS INTERLOCK

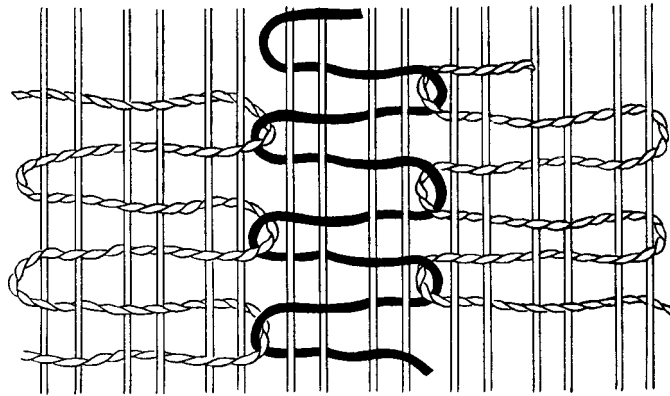


DIAGRAM SHOWING INTERLOCKING WEFT