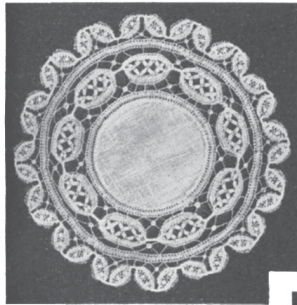


FOUR SPECIAL PAGES
WITH THE NEWEST IDEAS IN SUMMER NEEDLEWORK

NOVEL DESIGNS IN HONITON LACE

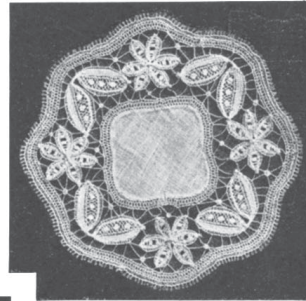
By *Minerva Powers*

THE linen centres of doilies and handkerchiefs are carefully basted close to the edge of the braid, trimmed and folded back, then buttonholed together. When finished



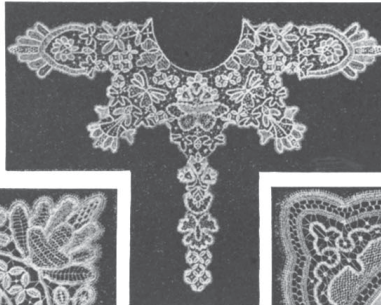
A ROUND TUMBLER DOILY

A FIRM foundation is necessary, that the outlines of the design may be preserved when the stitches are made. The design should be traced on the dull side of the linen, as it takes the ink better, but baste the braid on the opposite side. In basting, follow the convex curves, never the concave, keeping the braid perfectly smooth on the outer curve. Baste in very short stitches, that the braid may not draw away from the design. After the design is basted, draw down all inner or concave curves by whipping the braid over in fine stitches. Cut the braid as little as possible. To avoid this the braid may be turned back and run double if the distance is not too great.



A CARAFE DOILY

THE art of Honiton lace-making lies within the reach of any woman possessed of patience, neatness and a moderate degree of skill with her needle. Neatness is an essential requisite, for, be the work ever so well



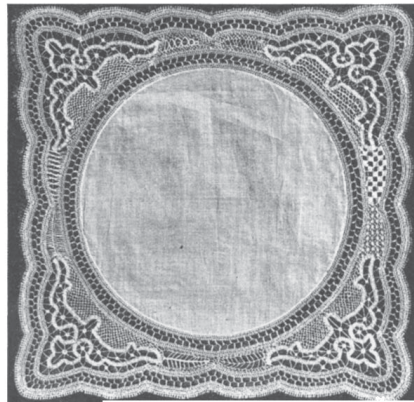
COLLAR

they should be trimmed closely and very carefully. Before removing from the pattern press the design with a warm iron. After removal lay a wet cloth over the finished lace and press until dry.



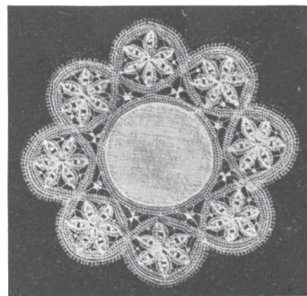
HONITON LACE HANDKERCHIEF

WHEN cutting is necessary the end of the braid must be turned back and buttonholed to that already basted. The upper or exposed side of the work should always be the



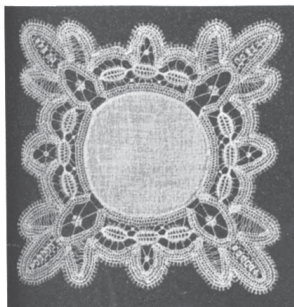
A LACE HANDKERCHIEF

done, the lack of it renders it absolutely valueless. Nothing could possibly be more unsightly than lace which is not carefully made. First of all, the foundation pattern



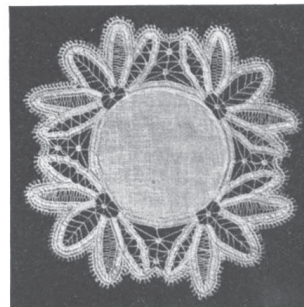
A CARAFE DOILY

FOR the large collar which is designed for a blouse waist, Honiton tape No. 783 was used, and thread Nos. 1000 and 1500. The tiny rings in the butterflies are made



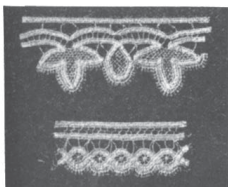
SQUARE TUMBLER DOILY

wrong side, and every effort should be made to have the wrong side as neat as the right. The pattern is then ready for the stitches, which may be arranged according to taste.

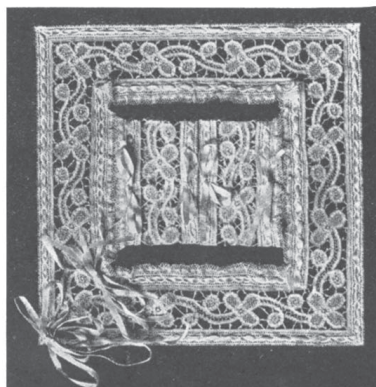


A FINGER-BOWL DOILY

must be of a firm material—something that will stand much handling and crumpling. The tracing linen used

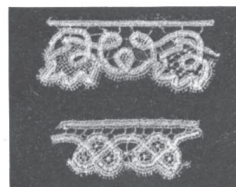


EDGING DESIGNS IN HONITON



A NIGHTDRESS SET

over a stiletto point. All the straight lines of the design are either of twisted threads or buttonhole bars.



LACE EDGINGS IN HONITON

by architects seems best adapted for this purpose. A fine piece of linen trimmed with either of the edging designs will make a pretty handkerchief.

The nightdress set consists of yoke and cuffs with ribbon run in. Fine Honiton tape and thread No. 1000 are used. No. 500 is used for the bars.