

vents the loss of tannins and copperas, the color being also precipitated in a loose state on the surface of the cotton; it should, however, be thoroughly washed out before the cotton enters the dye, otherwise this will be wasted by precipitation. Fig. 2 shows an

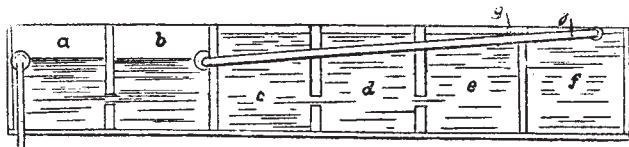


Fig 2

economical arrangement for the logwood baths; divisions *c*, *d* and *e* are all connected by holes in the partitions and are fed with a strong solution of dye, *g* is a hole near the top of partition in *e* and partially spent dye overflows through this into *f*. When the level of dye in *f* rises to the pipe *j*, it flows down this and back to the first two divisions, *a* and *b*. By these means, the cotton passes through the weaker dye solutions first, and these baths are replenished from *c*, *d*, *e* and *f* as the successive baths grow weaker. C. J. Curtis in The Dyer and Calico Printer.

**NOVELTIES FROM ABROAD.**  
**Cheviot Dressgood.**

*Warp:* 2816 ends.  
*Weave:* See Diagram Fig. 1; Repeat 44 warp threads and 8 picks; 12-harness fancy draw.  
*Reed:* 14¼ @ 3 ends; 65½ inches wide.  
*Dress:* 1 end 2/40's worsted black } 10 times  
1 " " " dk. & lt. gray }  
1 " 2/52's " black & red }  
1 " 2/40's " dark & light gray }  
1 " 2/40's " black } 10 times  
1 " " " dk. & lt. gray }  
1 " 2/45's " black & green }  
1 " 2/40's " dark & light gray }

44 ends in repeat of pattern.  
*Filling:* 45 picks per inch; arranged thus:  
1 pick 2/40's worsted black  
1 " " " dark & light gray  
—  
2 picks in repeat of pattern.  
*Finish:* Full about 11% in length; cheviot finish; 52 inches wide.

**Worsted Suiting.**

*Warp:* 4425 ends.  
*Weave:* See Diagram Fig. 3; Repeat 59 warp threads and 8 picks; 8 or 16-harness fancy draw.  
*Reed:* 15½ { 13 dents @ 4 ends  
1 dent @ 5 "  
1 " @ 2 " (of 4 ply),  
70 inches wide.  
*Dress:* 56 ends 2/52's worsted, dark gray mix  
1 end 2/70's worsted, copper  
2 ends 4/52's worsted, dark gray mix  
—  
59 ends in repeat of pattern.  
*Filling:* 60 picks per inch; arranged thus:  
1 pick 2/40's worsted, gold and green twist  
1 " 2/40's worsted, olive  
—  
2 picks in repeat of pattern.  
*Finish:* Worsted finish, 56 inches wide.

**Fancy Cassimere. (CHEVIOT SUITING.)**

*Warp:* 2042 ends, all 2 ply 5½ run woolen cheviot yarn.  
*Weave:* See Diagram Fig. 2; Repeat 120 warp threads and 4 picks; 8-harness fancy draw.  
*Reed:* 10¼ @ 3 ends; 66½ inches wide.  
*Dress:* 1 end white } 5 times  
1 " slate }  
1 " white } 5 times  
1 " black }  
1 " light gray }  
1 " black }  
1 " white } 5 times  
1 " black }  
1 " white } 3 times  
1 " light gray }  
1 " white } 11 times  
1 " black }

60 ends, repeat of pattern, or 2 repeats of it to one repeat of weave.

*Filling:* 33 picks per inch, all 2 ply 5½ run woolen cheviot yarn, arranged thus:  
2 picks black  
1 pick gray and white twist } 39 times  
1 " black }

80 picks in repeat of pattern.

*Finish:* Cheviot finish, scour well, clip on shear, press, decatize, finished width 56 inches.

**Woolen Cheviot Suiting.**  
(SPUN SILK EFFECT.)

*Warp:* 2600 ends; all woolen yarn: 2 ply 6 run, cheviot; all silk: 40's Spun Silk.  
*Weave:* See Diagram Fig. 5; Repeat 60 warp threads and 4 picks; 8-harness fancy draw.  
*Reed:* 9½ @ 4 ends, 68½ inches wide.  
*Dress:* 2 ends 40/2's Spun Silk, white  
2 ends 2/6 run white } 3 times  
2 " " " gray mix }  
2 ends 40/2's Spun Silk, white  
1 end 2/6 run white  
3 ends " " gray mix } twice  
3 " " " white }  
3 " " " gray mix }  
1 end " " white }  
1 " " " black } twice  
1 " " " white }  
1 " " " black }  
3 ends 40/2's Spun Silk, white  
1 end 2/6 run black } 3 times  
1 " " " white }  
3 ends " " gray mix } twice  
3 " " " white }  
1 end " " gray mix }

60 ends, repeat of pattern.

*Filling:* 52 picks per inch, all 5 run, woolen cheviot yarn, black.  
*Finish:* Cheviot finish, scour well, clip on shear, press, decatize; 56 inches wide.

**Worsted Trousering.**

*Warp:* 4556 ends; all 2/40's worsted.  
*Weave:* See Diagram Fig. 4; Repeat 136 warp threads and 4 picks; 8, 12 or 16-harness fancy draw.

Reed: 14 $\frac{1}{4}$  { 6 dents @ 5 ends  
1 dent @ 4 ends  
7 dents, containing 34 ends; 66 inches wide.

Dress: 5 ends black  
1 end light gray } 3 times  
1 " dark gray }  
2 ends black }  
6 ends black }  
1 end light gray } 2 times  
1 " dark gray }  
2 ends black }  
1 end light gray }  
1 " dark gray }  
1 " black }

34 ends in repeat of pattern.

Filling: 95 picks per inch, all 2/40's worsted, black.

Finish: Worsted finish, 56 inches wide.

**Fancy Dressgood. (PIECE DYED.)**  
Granite-Stripe Effect.

Warp: 4128 ends.

Weave: See Diagram Fig. 6; Repeat 12 warp threads and 12 picks; 12-harness straight draw.

Reed: 21 @ 4 ends, 49 $\frac{1}{2}$  inches wide.

Dress: 12 ends 2/80's worsted in the grey, twisted with white cotton.  
12 " 2/78's worsted in the grey.

24 ends in repeat of pattern.

Filling: 85 picks per inch, single 52's worsted in the grey.

Finish: Scour well, singe, dye reseda green or any other fashionable color; 44 inches wide.

**Fancy Cassimere. (MELTON SUITING.)**

Warp: 3044 ends.

Weave: See Diagram Fig. 7; Repeat 4 warp threads and 4 picks; 8-harness straight draw.

Reed: 11 @ 4 ends per dent; 69 inches wide.

Dress: 2 ends 5 run white  
2 " 2/40's worsted, black and white twist  
4 " 4 $\frac{1}{2}$  run black

8 ends in repeat of pattern.

Filling: 46 picks per inch, arranged thus:  
2 picks 4 $\frac{1}{2}$  run black  
1 pick 2/36's worsted, black and white twist

3 picks in repeat of pattern.

Finish: Melton finish; scour well, full slightly, clip on shear, press, decatize; finished width 56 inches.

**Homespun Dressgood.**

Warp: 2480 ends.

Weave: See Diagram Fig. 8; Repeat 8 warp threads and 8 picks; 8-harness straight draw.

Reed: 10 $\frac{1}{2}$  @ 4 ends; 59 inches wide.

Dress: 3 ends 2/28's worsted blue mix  
1 end 2/62's " " "

4 ends in repeat of pattern.

Filling: 30 picks per inch, all 2/28's worsted, blue-yellow mix.

Finish: Cheviot finish, scour well, clip on shear; 52 inches wide.

**Fancy Cassimere. (CHEVIOT SUITING.)**

Warp: 1836 ends.

Weave: See Diagram Fig. 7; Repeat 4 warp threads and 4 picks; 8-harness straight draw.

Reed: 9 @ 3 ends per dent; 68 inches wide.

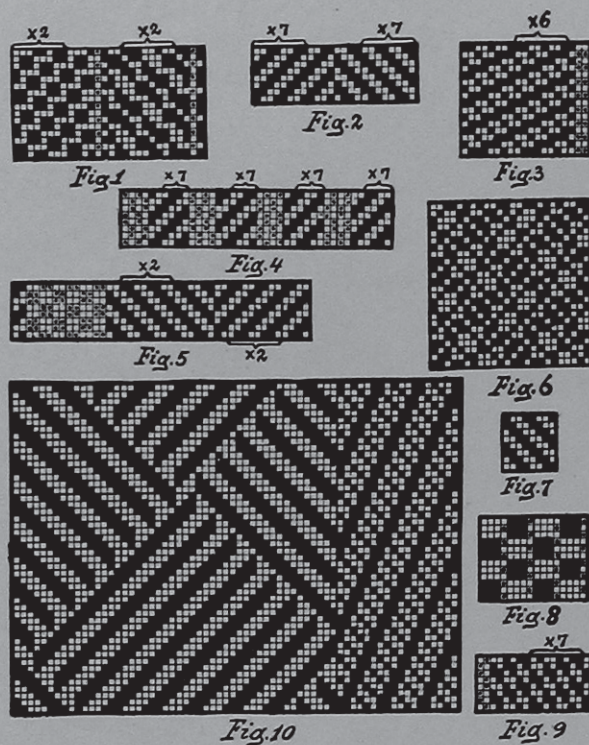
Dress: 1 end 4 run black  
1 " 2/16's worsted black and white

2 ends in repeat of pattern.

Filling: 30 picks per inch, arranged thus:  
1 pick 3 $\frac{1}{2}$  run, red brown  
1 " 2/16's worsted, yellow and green  
1 " 3 $\frac{1}{2}$  run, red brown  
1 " 2/16's worsted, white and blue

4 picks in repeat of pattern.

Finish: Cheviot finish; scour well, clip on shear, press, decatize, 56 inches finished width.



**Worsted Suiting. (HAIRLINE EFFECT.)**

Warp: 3960 ends, all 2/48's worsted.

Weave: See Diagram Fig. 9; Repeat 66 warp threads and 4 picks; 8-harness fancy draw.

Reed: 15 @ 4 ends per dent; 66 inches wide.

Dress: 4 ends black  
2 " gray mix } 15 times  
2 " black }  
2 " gray mix }

66 ends in repeat of pattern.

Filling: 70 picks per inch, arranged thus:  
1 pick 2/48's worsted black and slate twist  
1 " " " black

2 picks in repeat of pattern.

Finish: Worsted finish, 56 inches wide.

**Cloaking. (MELTON.)**

Warp: 3000 ends, all 2/28's worsted, black.

Weave: See Diagram Fig. 10; Repeat 66 warp

threads and 48 picks; 24-harness fancy draw.

*Recd:* 13 @ 3 ends per dent, 77 inches wide.

*Filling:* 45 picks per inch; all 1/16's worsted, dark gray mix.

*Finish:* Full 12% in length, worsted melton finish, 56 inches wide.

**DIRECTORY OF TRADE MARKS RELATING TO THE TEXTILE INDUSTRY.**

Registered December, 1910.

1. Stockings.—O'Callaghan & Fedden, New York City.

2, 3, and 4. Wool, Worsted, Silk, Mohair, Cotton, Plain and Union Piece Goods.—George J. Geer, New York City.

**900** **PATRICIA** **INDITA** **PRISCILLA**  
1 2 3 4

*Baby Beauty's*  
5

**BARBOUR'S**  
6

*Violet*  
7



8



10



12

**DEXTER**  
9

**RYMASTER**  
11

**MANDARIN**  
18

**LINAIRE**  
13

**Electric**  
14

**SECURITY**  
15



**DIANA**  
17

*Revere Mills*  
19

**PERFEKA**  
20



16



21

**ECLIPSE**  
22



24

**Pluvette**  
26

**RUMWORTH**  
23

**Voiliron**  
25

**W. B.**  
27

**QUINCESS**  
28

*Revere Snow*  
30

**Carnatton**  
32

**IVANHOE**  
29

**Welt-**  
31

*maisonline*  
33 34

**SUPERBA**  
35

**LYNFLEX**  
36

**PATRIOT**  
37

5. Infants' Clothing, etc.—Mary Pauline Offutt, Milton, Mass.

6. Linen Thread.—The Barbour Bros. Co., Paterson, N. J.

7. Knit Underwear.—Carson, Pirie, Scott & Co., Chicago, Ill.

8. Silk Goods in the Piece.—The Valentine & Bentley Silk Co., Newton, N. J., and New York City.

9. Rainproof Coats, etc.—Wallace, Scott & Co., Ltd., Glasgow, Scotland.

10. Lace, Shawls, Ribbon, Elastic Webbing, Underwear, etc.—Ward-Truitt Co., Atlanta, Ga.

11. Overalls, Work Shirts, Coats and Trousers.—Harris-Lipsitz Co., Dallas, Tex., and New York City.

12. Wool and Cotton Piece Goods.—Pacific Mills, Lawrence and Boston, Mass.

13. Wearing Apparel, Handkerchiefs and Curtains.—Burch Bailey & Co., New York City.

14. Women's and Children's Wearing Apparel.—Barmon Bros., Buffalo, N. Y.

15 and 24. Hosiery.—Central Knitting Co., St. Louis, Mo.

16. Petticoats.—Rice-Stix Dry Goods Co., St. Louis, Mo.

17. Bleached Cotton Piece Goods.—Carson, Pirie, Scott & Co., Chicago, Ill.

18. Silk, Cotton, Mercerized, and Machine Sewing Threads.—Gudebrod Bros. Co., New York City.

19. Knitted Underwear.—Brown Durrell Co., Boston, Mass.

20. Tulles.—Gros, Million, & Cie, Lyon, France.

21. Men's and Boys' Suits and Overcoats.—Sheahan, Kohn & Co., Chicago, Ill.

22. Loom-Shuttles.—Woonsocket Shuttle Co., Woonsocket, R. I.

23. Shirtings.—Thomas A. Harris, New York City.

25. Woolen Dress Goods.—Strawbridge & Clothier, Philadelphia.

26. Waterproofed and Spot-Proofed Silks.—Rogers & Thompson, West New York, N. J., and New York City.

27. Trousers.—Samuel Weber & Co., Providence, R. I.

28. Ladies', Misses' and Children's Wearing Apparel.—Alfred Day Richey, Chicago, Ill.

29. Drapery Fabrics.—Carson, Pirie, Scott & Co., Chicago, Ill.

30. Shirt-Waists and Dresses.—French Tea Gown Co., New York City.

31. Silk Umbrella-Covers.—Otto Müller & Co., Georlitz, Germany.

32. Underskirts.—Bellas Hess & Co., New York City.

33. Cotton Piece Goods.—The Chas. A. Maish Co., Cincinnati, O.

34. Laces.—Alb. & E. Henkels, Bridgeport, Conn., and Langerfeld, Germany.

35. Hosiery and Reefers.—H. C. Cohn & Co., Rochester, N. Y.

36. Cotton, Silk, and Wool Piece Goods.—Baltimore Bargain House, Baltimore, Md.

37. Cotton Piece Goods.—Grinnell Willis & Co., New York City.

Leeds produces from the finest worsteds for men's wear to the cheaper qualities, rain-proofed cloth, khaki, tweeds, beavers, serges, mantle cloth, blankets, rugs, carpets; in fact, about everything in the line of woollens and worsteds; the chief staple being heavy woollens and shoddy fabrics.