

**VILLA, STEARNS COMPANY**  
**AMERICAN WOOLEN BUILDING**  
 Telephone 6174 Gramercy 221 Fourth Avenue, New York  
**RAW AND THROWN SILK**  
**KNITTING SILKS, HOSIERY SILKS**  
**SILK ON SPOOLS, CONES, QUILLS, BEAMS**  
**DYED SILK FOR ALL PURPOSES**  
 Philadelphia Representative:—George B. Pfingst, 519 Bourse Building

**RIBBONS, TRIMMINGS, EDGINGS, ETC.**

(Continued from September issue)

**Connected Weaves.**

Two totally different weaves are in this case combined in a new combination weave, forming either stripes or checks.

In designing these weaves always try and arrange a clear break where the two weaves join, *i. e.*, place risers of one weave opposite sinkers of the other weave and vice versa, whenever possible. Weaves Figs. 87, 88 and 89 explain subject.

Weave Fig. 87 shows how to connect the plain weave (taffeta) with the four harness unevensided twill, filling effect.

Weave Fig. 88 shows the connecting of the plain weave (taffeta) with double plain (double cloth), and

Weave Fig. 89 shows squares of five threads and five picks of 5-leaf satin warp effect, to exchange warp and filling ways with similar size squares of 5-leaf satin filling effect.

**Figured Rib Weaves.**

The same are the checkerboard combinations of warp and filling effect rib weaves, imparting to the face of the fabric a well broken up granite effect.

Weave Fig. 90 explains the subject, showing checkerboards of 4 warp-threads and 4 picks of the 2 up 2 down rib weave, warp effect, to exchange alternately with similar size checkerboards of the same rib weave filling effect.

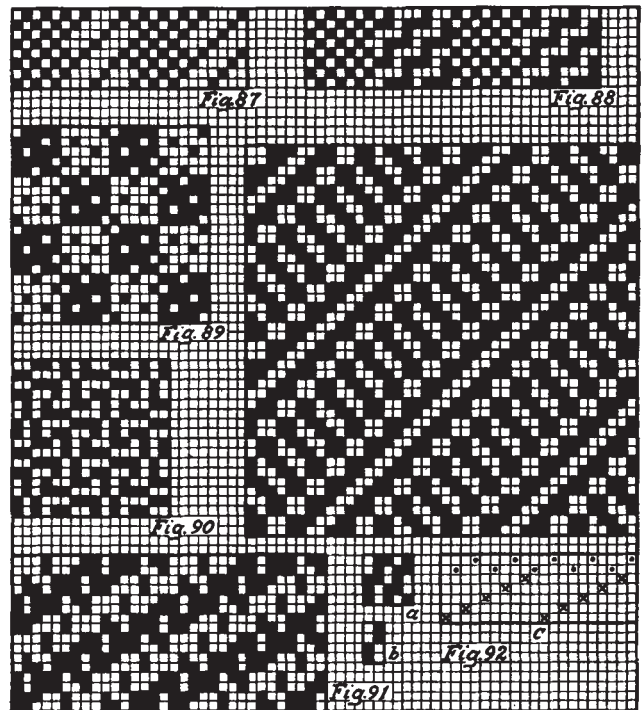
**Intersected Weaves.**

Two or more weaves may be in this way used in the formation of a new weave. We may in this way intersect either the warp-threads of the foundation weaves, or its picks, the first mentioned arrangement being the one generally used. Weave Figs. 91 and 92 are given to explain the subject.

Weave Fig. 91 shows us a fancy twill obtained by combining, *i. e.*, drafting alternately (1: 1) warp-threads from the 4 up 4 down 8-harness regular twill with those of the 2 up 2 down, 2 by 4 rib weave.

Repeat of the resulting fancy twill weave, 16 warp-threads and 8 picks.

Weave Fig. 92 shows the result of intersecting (1: 1) the warp-threads of the 5-harness corkscrew (see diagram *a*) with those of the 2 by 4 rib weave



(*b*). Diagram *c* as given below the new weave, shows the plan for drafting, *cross* type standing for the warp-threads drafted from one weave (the 5-harness corkscrew) and *dot* type standing for the warp-threads drafted from the other weave (the 2 by 4 rib weave). Repeat of the new weave obtained is 20 warp-threads and 20 picks.

For dress trimmings moires, taffetas, plain failles and stripes, are those most in vogue.

**'PHONE 1754** **Prescott & Waywell**  
**WINDING, WARPING AND COPPING**  
**Also Warps Prepared for Printing**  
**432-434-436 GRAHAM AVE. :: :: PATERSON, N. J.**