

NEW IDEAS FOR WORSTED DRESS GOODS.

Gabardine Dress Goods.
(*Scotch Stripe Effect.*)

Weave: See Fig. 1; Repeat 11 warp-threads and 22 picks.

Draw: 11-harness; Straight.

Warp: 5760 Ends.

Reed: 20 with 5 ends per dent; 57½ inches wide.

Dress: 15 Sections, with one pattern to one section.

ARRANGEMENT OF WARP:

86 ends 2/60's worsted,	navy blue
4 " " "	, canary yellow
86 " " "	, navy blue
30 " " "	, black
72 " " "	, green
4 " " "	, scarlet
72 " " "	, green
30 " " "	, black.

384 ends, repeat of pattern.

Filling: 75 picks per inch, all dark navy blue.

Finish: Scour well, clear face on shear; 52 inches.

Fancy, Corded Dress Goods.
(*Roman Stripe Effect.*)

Weave: See Fig. 2; Repeat 10 warp-threads and 4 picks.

Draw: 10-harness, Straight.

Warp: 5940 ends.

Reed: 21 with 5 ends per dent; 56½ inches wide.

Dress: 18 Sections, with one pattern to one section.

ARRANGEMENT OF WARP:

10 ends 2/60's worsted,	black
70 " " "	, navy blue
10 " " "	, yellow
20 " " "	, black
10 " " "	, yellow
70 " " "	, navy blue
10 " " "	, black
50 " " "	, dark green
10 " " "	, black
10 " " "	, red
10 " " "	, black
50 " " "	, dark green

330 ends, repeat of pattern.

Filling: 70 picks per inch, all single 36's worsted cheviot, navy blue.

Finish: Scour well, clear face on shear; 52 inches.

Figured, Corded Dress Goods.
(*Indistinct Blue Stripe Effect.*)

Weave: See Fig. 3; Repeat 10 warp-threads and 12 picks.

Draw: 10-harness; Straight.

Warp: 6000 ends.

Reed: 21 with 5 ends per dent; 57½ inches wide.

Dress: 15 Sections with 5 patterns (= 400 ends).

ARRANGEMENT OF WARP:

1 end 2/60's worsted	A	} × 3	} × 6
2 ends " "	B		
1 end " "	A		
1 end " "	A	} × 3	
2 ends " "	B		
2 ends 2/70's worsted	C	} × 3	
2 ends 2/60's worsted	B		
1 end " "	A		

80 ends, repeat of pattern.

Filling: 94 picks per inch, arranged thus:

1 pick B
1 " D

2 picks in repeat of pattern.

DESCRIPTION OF YARN USED:

A = Fashionable shade, one color.

B = Fashionable shades of light and dark colors or mixes.

C = Peacock blue; the color producing the indistinct stripe effect.

D = Single 36's worsted; fashionable shade of brown.

Finish: Scour well, clear on shear, 52 inches finished.



Fig. 1

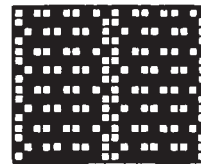


Fig. 2

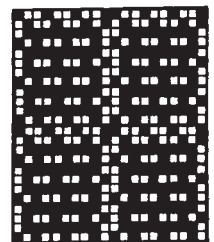


Fig. 3

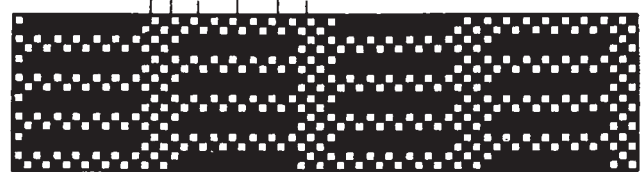


Fig. 4

Piece Dyed Bedfordcord.

Weave: See Fig. 4; Repeat 32 warp-threads and 4 picks.

Draw: 10-harness; Fancy.

Warp: 5200 ends, 2/68's worsted, in the grey.

Reed: 28½ with 2, 3, 4, 4 and 3 ends per dent, as indicated by means of lines on top of weave; 57½ inches wide in reed.

Filling: 94 picks per inch, all 36's single worsted, in the grey.

Finish: Scour well, singe, piece dye bright fashionable gray, clear on shear; 52 inches finished width.

To Render Cotton Goods Less Inflammable.

By treatment with an alkaline aluminate, followed by drying and subsequent moist treatment with carbon dioxide, cotton becomes less inflammable, the effect remaining after repeated washing with soap.

For example, flannelette may be impregnated with sodium aluminate 30° Tw., squeezed and dried. It is then aged in an atmosphere containing 50 per cent CO₂ at 80° C. with sufficient steam to ensure the cloth being slightly damp on emerging after half an hour's treatment.

To obtain the best results it is essential that the amount of moisture present during the ageing with CO₂ should not be so large as to disturb the condition established in the substance by the drying of the aluminate.

Salts of other metals the hydroxides of which are capable of acting as acids may be used, while as a weak acid gas for ageing purposes SO₂ may alternatively be employed.