

# Posselt's Textile Journal

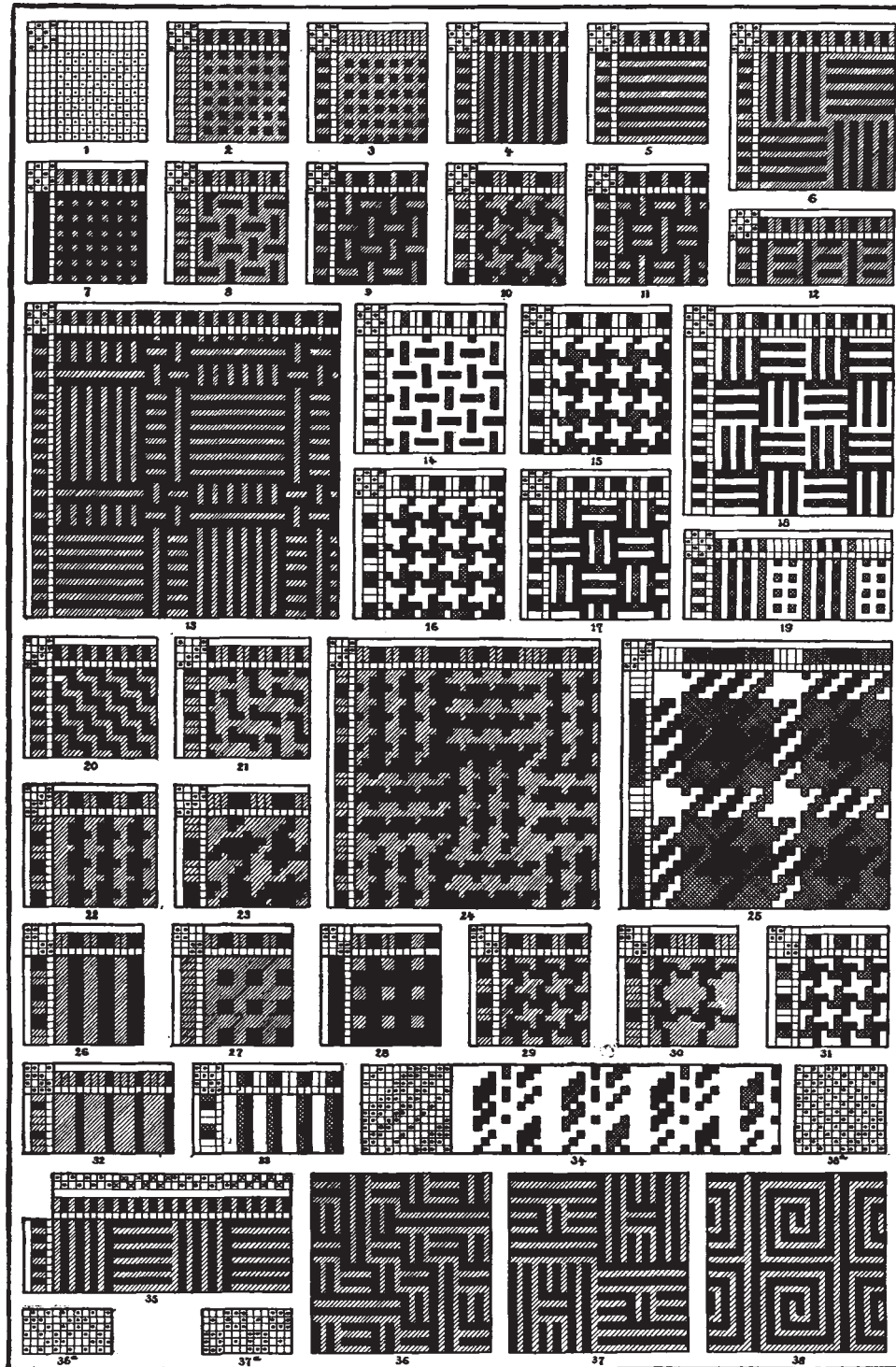
Vol. XXVI.

June, 1920.

No. 6

## "COLOR EFFECTS."

Rules and Illustrations showing how to make up any color effect for any kind of Textile fabric.



Weave. Arrangement of Warp. Arrangement of filling. Effect

Fig. 1, shows weave placed in effect section with small dots. Rule:—Warp shows where there are Risers; filling where there are Sinkers. Figs. 2 to 13—plain weave with 2 colors; Figs. 14 to 19—plain weave with 3 colors, Figs. 20 to 24—four-harness even-sided twill with 2 colors, and Fig. 25 the same weave with 3 colors. Figs. 26 to 30—four harness basket with 2 colors, and Fig. 31 the same weave with 3 colors. Fig. 32—four-harness broken twill with 2 colors, and Fig. 33 the same weave with 3 colors. Fig. 34—twill stripe (warp 3 lt., 3 dk., 1 lt., 1 m., 1 lt. 3 dk., 3 lt., 3 m., 1 lt., 1 dk., 1 lt., 3 m.) Figs. 35 to 37—warp and filling 1 end light, 1 end dark, plain weave reversed according to motives. Fig. 38a.—fancy weave, Fig. 38 effect produced by arranging this weave with warp and filling 1 end light, 1 end dark.

Designed and copyrighted by E. A. Posselt, 216 North 21st St., Phila., Expert in Textile Designing and Manufacturing, also Publisher of the leading works on Textile Industries. Write for circulars.