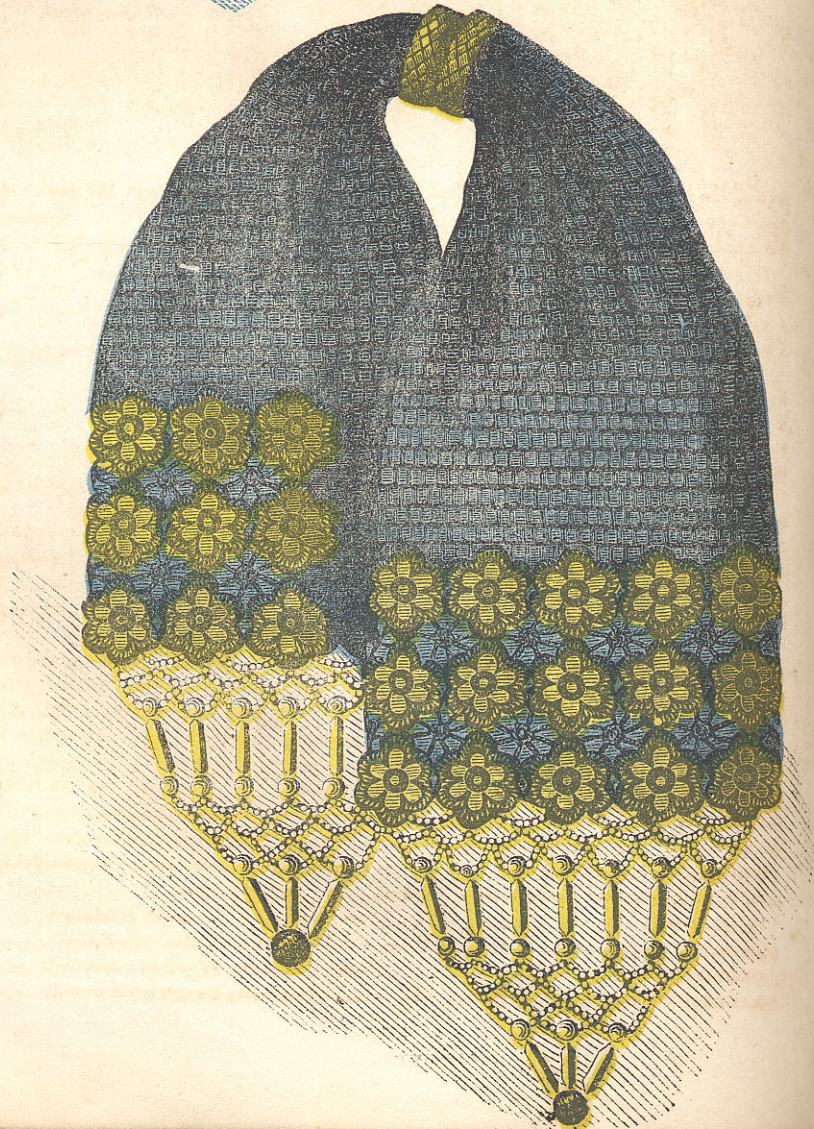
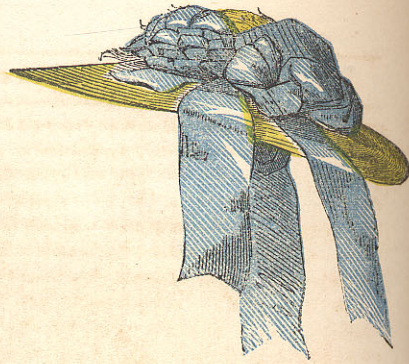
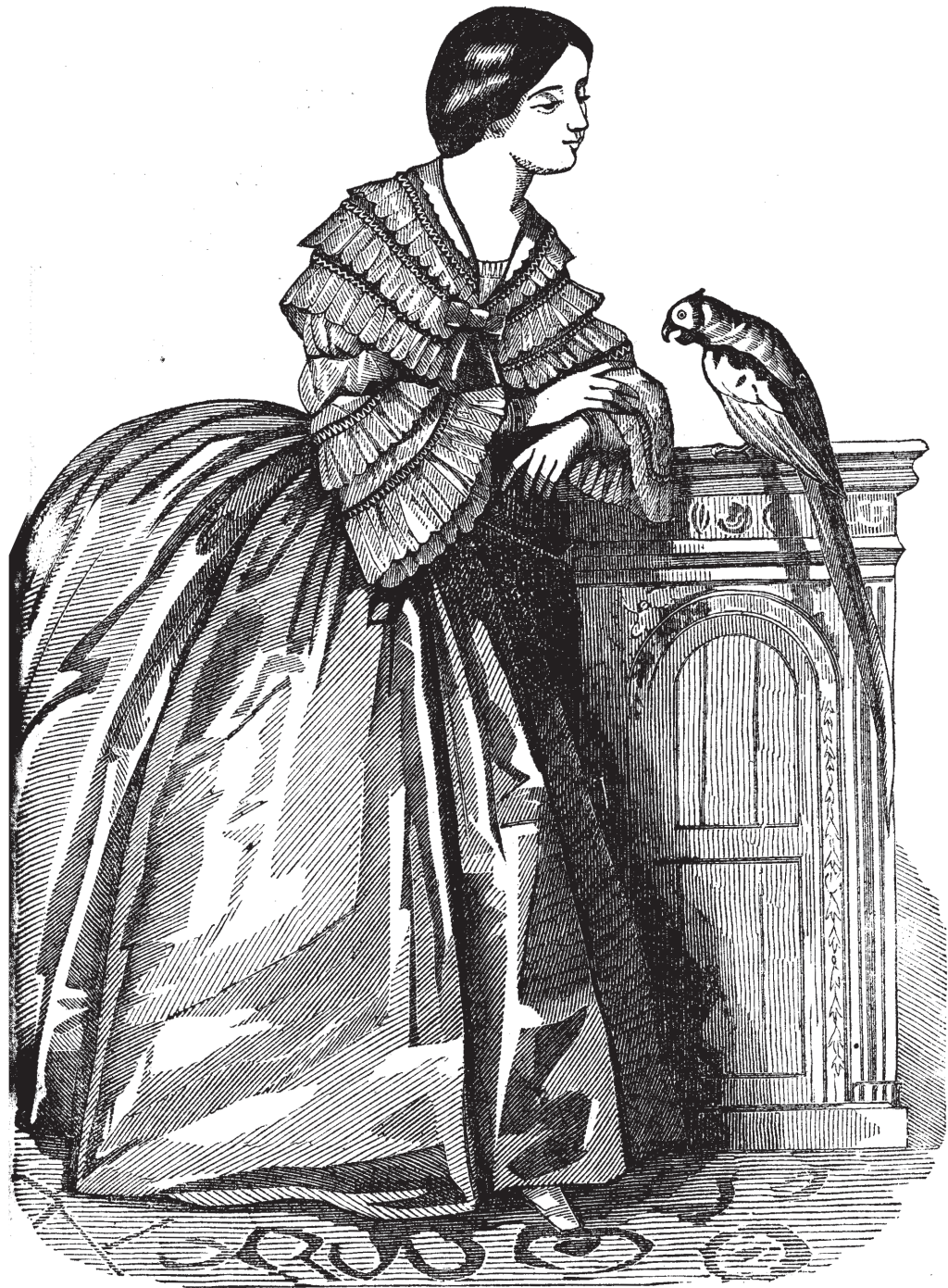


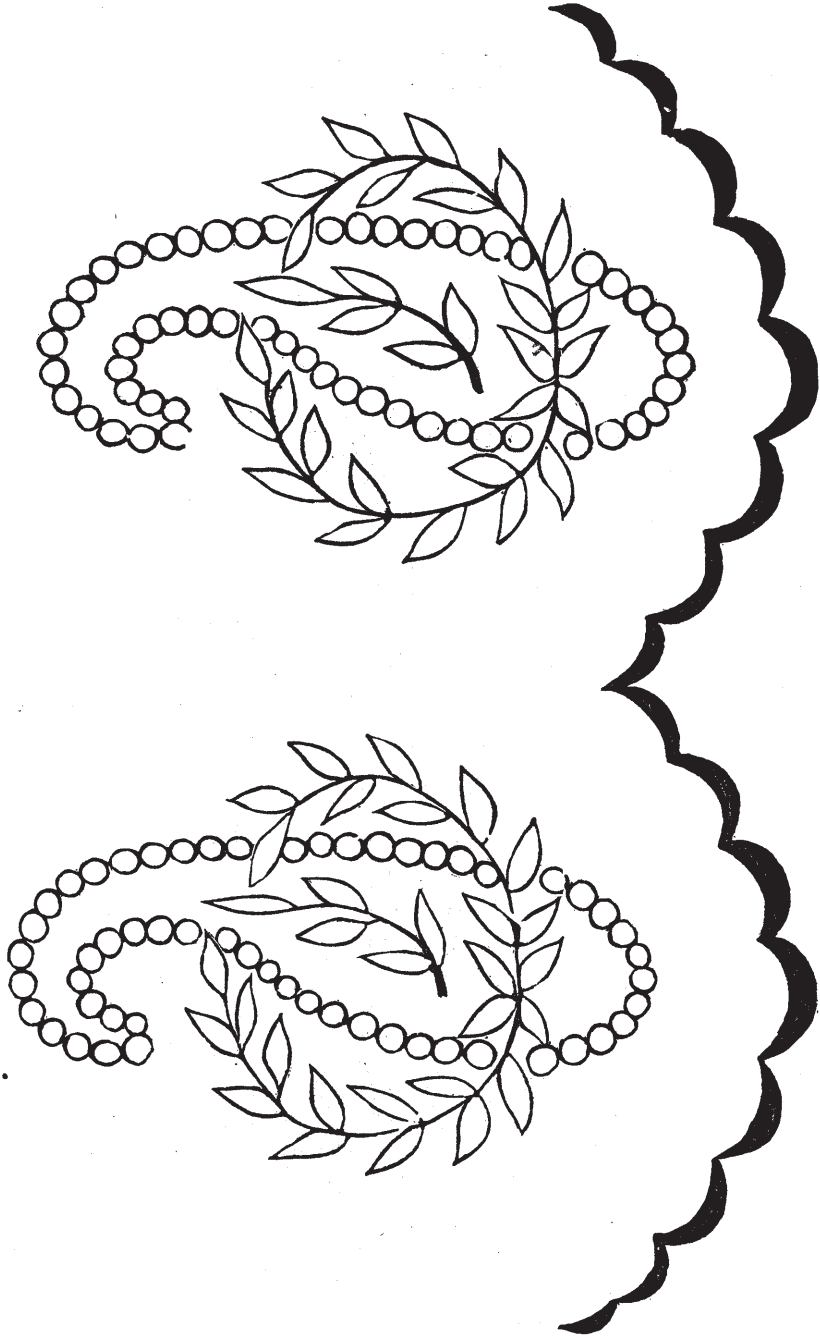


LES MODES PARISIENNES

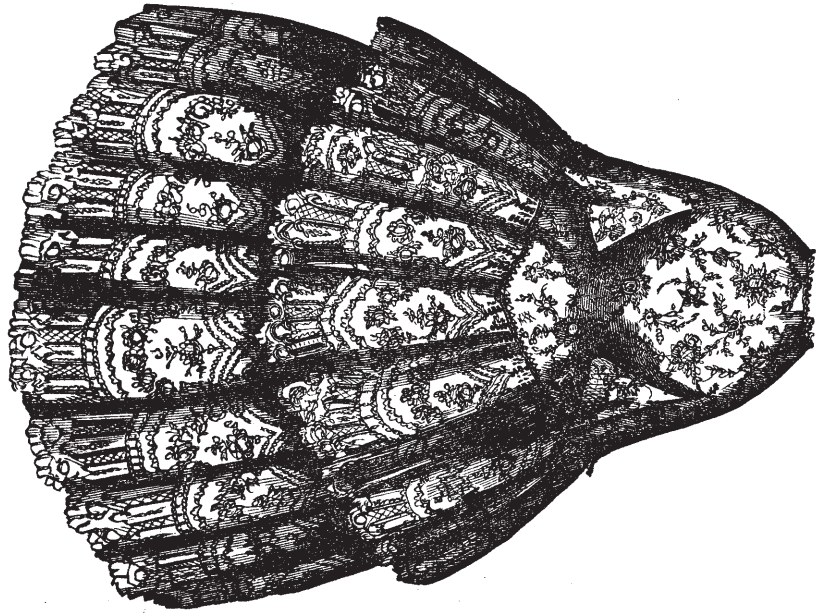




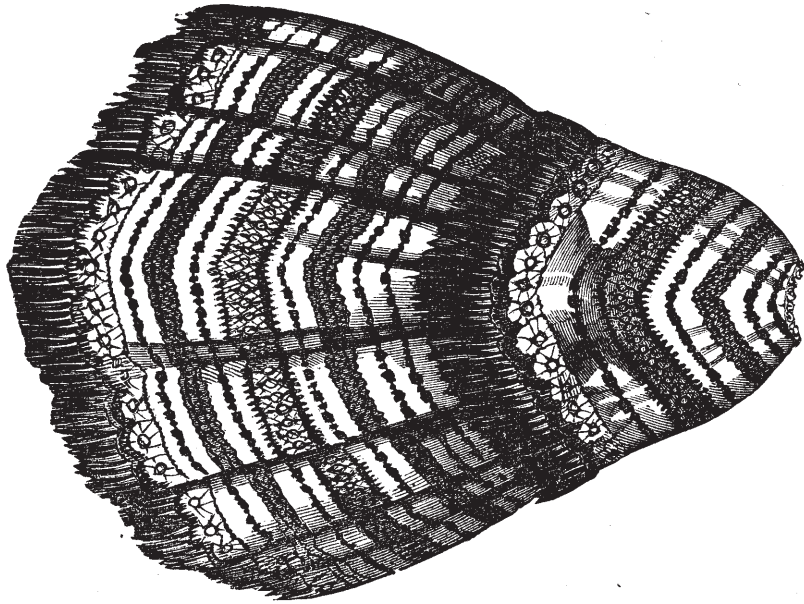
COSTUME FOR WATERING-PLACE.

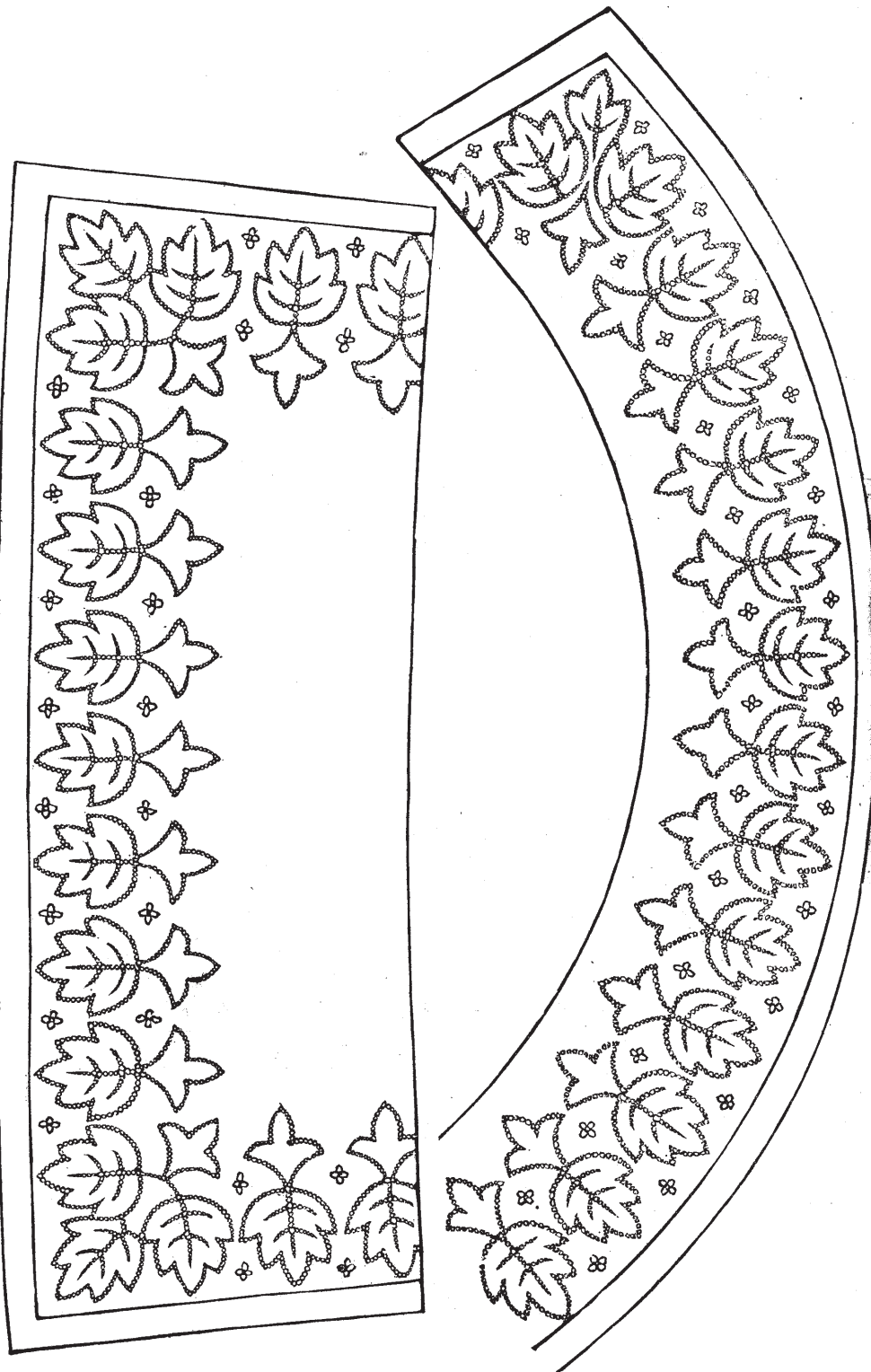


BOTTOM OF PETTICOAT.

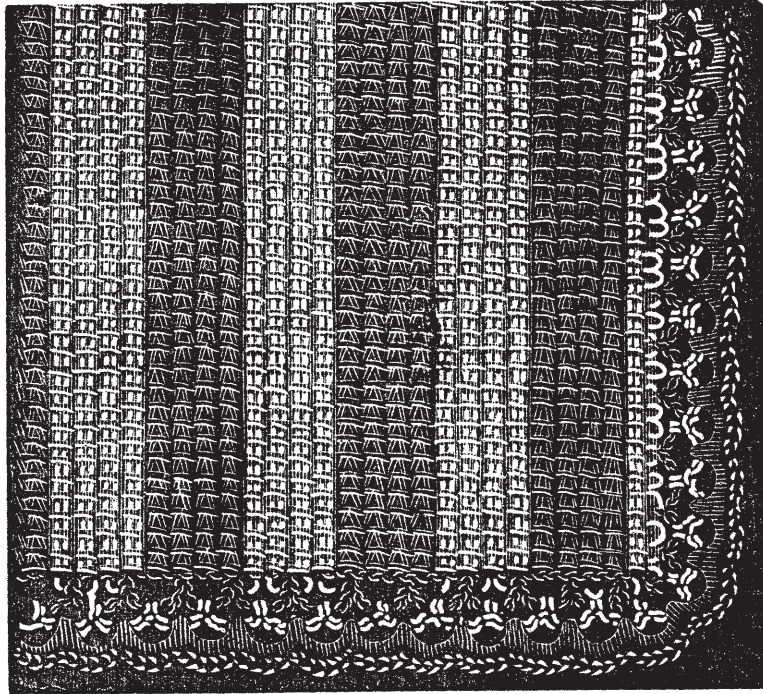


LACE MANTILLAS FOR SUMMER WEAR.

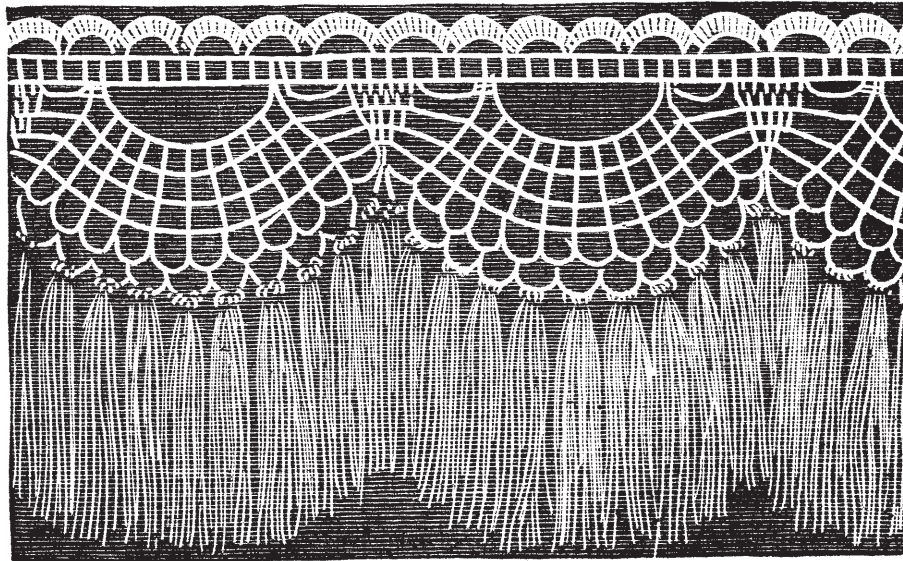




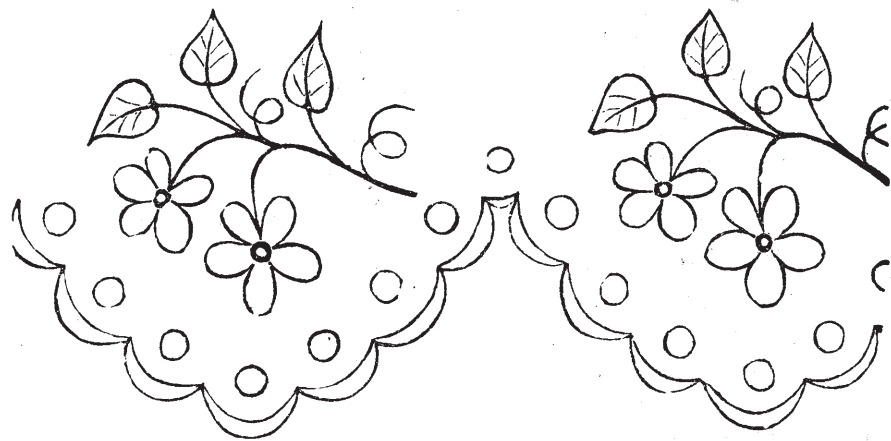
COLLAR AND CUFF.



BABY'S BASSINET COVER.



ESCALLOP SHELL FRINGE.



PATTERN OF SKIRT.



CHILDREN'S FASHIONS.