

RUSSIAN WOOL.—A project of great importance with reference to the export of Russian wool, is at present occupying the Russian Ministry of the Imperial Domains. As the dirty condition of the wool, the want of care in shearing, and other circumstances, have recently discredited Russian wool very seriously in foreign markets, wools of good quality will be specially encouraged by the Government.

RUSSIAN TRADE IN PERSIA.—According to intelligence that has reached Vienna from St. Petersburg, a commercial company enjoying the patronage of the Russian Government has been formed, with the object of establishing at Teheran and throughout Persia commercial depots and agencies for the furtherance of Russian trade in Persia. At the depôts patterns and samples will be kept of the goods likely to find a sale in Persia. A representative of the company, M. Kornoff, has left for Persia, to make arrangements in Teheran and the chief towns for putting the schemes into execution. Of course the object of all this is to enter into serious competition with English trade, and, if possible, monopolise the trade of Persia for Russia.

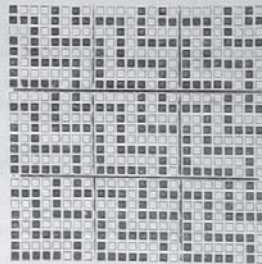
In the next session of Parliament a bill will be introduced to amend the Merchandise Marks Act, 1887. Clause No. 3 runs as follows:—All goods manufactured in Great Britain and Ireland shall be plainly and distinctly marked with the name of the manufacturer and the name of the town in which such goods have been manufactured.

Designing.

NEW DESIGNS IN COTTON GOODS.

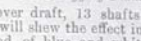
Orders for new spring dress goods are quite up to the average, small checks and stripes being chiefly in demand in shades of shrimp, fawn, drab, rose, and a few tones of green. Fancy shirtings in novel designs for home and abroad are being enquired about, the home make to be of good materials. We give two designs which will suit manufacturers of these goods.

COTTON SHIRTING.



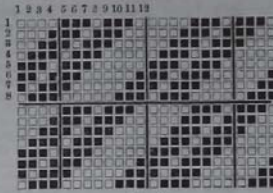
No. 1.

No. 1 Pegging Plan.



Straight over draft, 13 shafts 13 to round. The design will show the effect in cloth, warped end and end of blue and white; brown and white, or any colour and white, checked the same way; but for the convenience of manufacturers who may not have drop boxes on each side, the warp can be two in a heald and two in a shed, a selvage end acting as a catcher on the opposite from the shuttle boxes. A good cloth can be made from 20's, two in a heald, in an 80 reed 16's weft, two in a shed white bleached 60 picks. Of course the two in a shed would make 20 to the round. A broken effect could be obtained by checking as follows: 2 in a shed blue, 2 white, 2 blue, 2 white, 2 blue, 2 white, 2 blue, 2 white, 2 blue, 4 white. Many varieties can be obtained by altering the pegging plan to any other tie within the limits of 13 shafts.

FANCY DRESS CHECK IN COTTON.



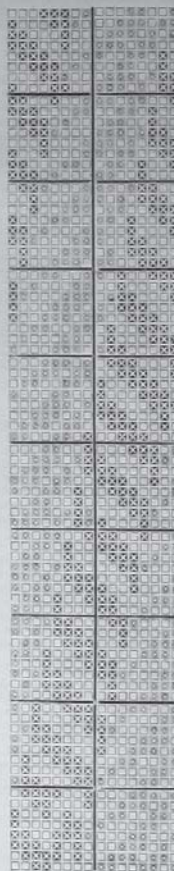
No. 2.

Straight over draft, 12 shafts 8 to round is the pegging plan, warped 5 slate, 2 black, 5 slate, 12 of white; checking the same. Any other colours as fancy may dictate, can be used with white. 80 reed, two in a dent, 24's warp, 24's weft, 80 picks to inch. Makers of dress goods must be guided by their own judgment as to materials and quantity used.

NEW DESIGNS IN WOOLLEN AND WORSTED.

WOOLLEN CLOTH.

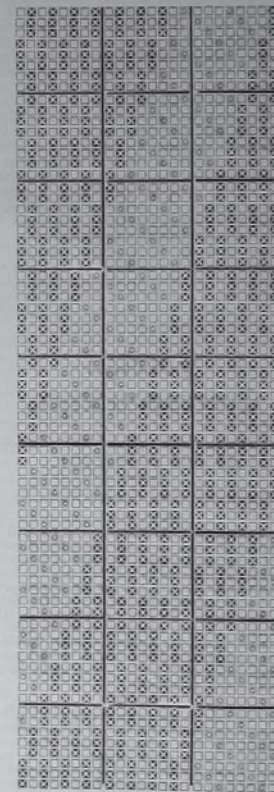
Those unacquainted with the textile trades have little idea of the immense amount of labour and talent employed in the production of new designs and effects; nay, further, few persons



DESIGN 38.

intimately acquainted with the textile trades realize this. Improvements in machinery, diversities of fashion, and competition, are each in their own way calling into requisition all the skill and patience of the designer. And yet those best able to judge tell us that the productions of the looms of to-day are insignificant when compared with the loom products of by-gone ages.

This may be so, and probably is so in some cases; the tendency of the times inclines even the best textile design of the present day towards mediocrity, and the lower sorts towards the "cheap and nasty." Each active influence mentioned above promotes this tendency, and probably the only way of counteracting it is to improve the artistic culture of all, rich and poor, young and old, to the very best of our ability. There is, however, one great redeeming feature noticeable in all this, viz., that certain classes of material, not many years ago unworkable, can now, with modern appliances, be spun and woven into by no means despicable cloths; and further, cloths are now figured and new effects produced in various ways which modern experience has suggested, where previously such a thing would not have been thought of or attempted. A designer must now not only depend upon the aptitude which he displays for putting



DESIGN 39.

down designs on paper, but also upon the readiness and facility with which such designs can be woven. It is thus we get a constant tendency to obtain the maximum figure produced with a minimum figuring capacity.

Design 38 is a typical example of this, and is selected (as were 39, 30, and 31 in a previous

number of this journal) from the excellent collection of designs produced in the Textile Department of the Yorkshire College. When we consider the effect produced in each one of these designs without drafting, and then remember the still further enlargement which may be accomplished by drafting, an idea may be formed of the extent to which figured effects may be produced with even a limited number of healds. *Design 38* should be woven in the following sett:—

Warp.
All 10sk. woollen.
8's reed 4's.

Weft.
10sk woollen.
32 picks per inch.

The remarks that were made on the colouring of *Designs 29, 30, and 31* are equally applicable to this design, though colour is perhaps more

difficult to apply to figured woollens of this kind than to worsteds. Mixture warp with a solid colour for the weft would also give an excellent result, or to take advantage of the effect of colour, and weave and warp one thread of black, one thread of grey, and one thread of white, and checking on the same system might form a serviceable pattern, particularly if the design be modified and more of the 6-end twill element introduced.

DRESS FABRICS.

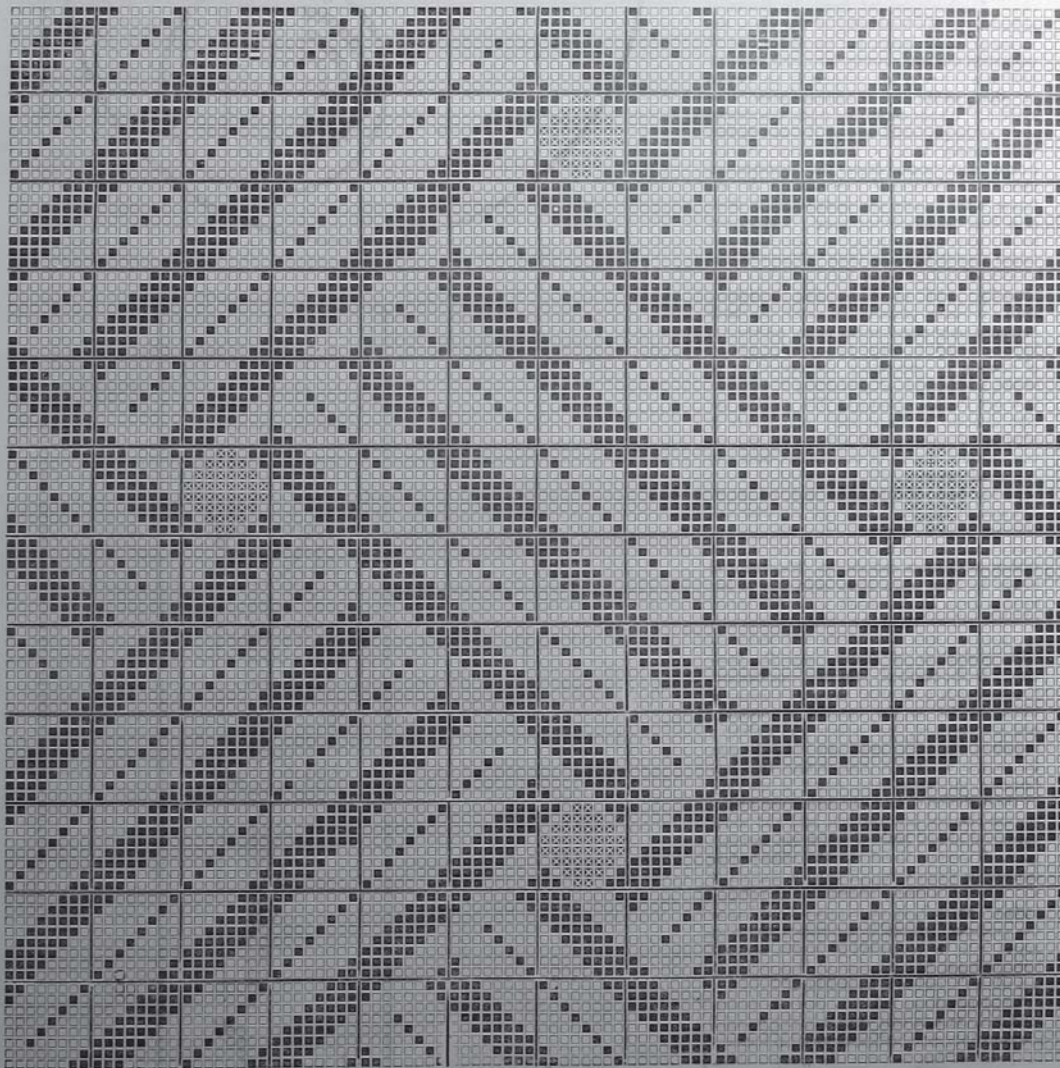
For indoor wear neat black or dark-coloured goods are always in demand. *Design 39* is furnished for such goods, and is an exceedingly effective method of forming a neat twill effect. The following is a suitable sett:—

Warp.
2/120's black worsted.
150 ends per inch.

Weft.

All 60's black worsted.
100 picks per inch.

Design 40 may be utilized in many ways. Woven with fine yarns and in a fine sett it will give an effective dress piece either in worsted, cotton or silk yarns, or it might be utilized as a figured ground for a fancy waistcoat pattern, coloured silk being introduced in spot form where the design is developed in 2/2 type, or a spray of leaves developed in bright silk might be introduced in the centre of each square. Again, this suggests the arrangement of floral figures in like manner, and no doubt some exceedingly useful patterns might be produced by such modification. The design as given here repeats on 64 threads and 64 picks. Next week we intend commencing a series of designs illustrating the arrangement of figures suitable for textile fabrics.



DESIGN 40.