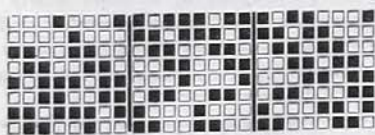


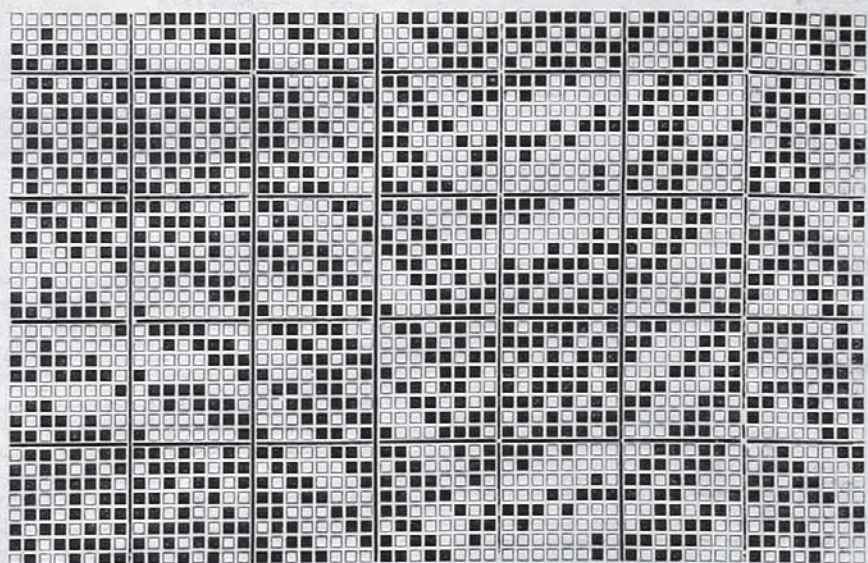
FIGURE 7a.

COTTON SHIRTINGS.

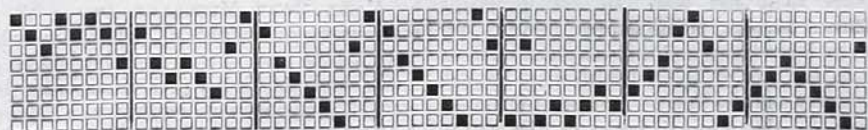
No. 1 is on 8 shafts, 56 ends draft, and 24 to round. Reed 80, two in a dent 21's twist with 60 picks per inch of 14's weft; warp mid brown, blue, in any depth of tone or tint; weft all white, soft spun; warp may be white or any very light shade, and weft dark browns, blues, or amber of a deep tone. If a certain weight per yard is required, it will be found by the rule that the diameters of threads vary as the square roots of their counts; thus a 36's thread to that of a 16's is not as 16 : 36, but as square root of 16's || 4 is to square root of 36=6 or as 4 to 6. It may be a guide to give with each design the materials or details of a cloth which it may suit; but some designs will suit many cloths, and No. 1 is not an exception.



No. 1 PEGGING PLAN.



No. 1.



No. 1 DRAFT.