

6. HOW TO PUT THE DECISIONS ARRIVED AT INTO OPERATION.

Shall decisions be made with regard to the carrying out of the rules to be agreed upon and for supervising their operations? Shall continual conferences of representatives of the Governments participating in this one respect be held, and what task shall be assigned them?

It will be seen from the above that the high-sounding proposals of the Emperor have been so far emasculated as to leave little beyond a series of academic propositions, which would suit very well the programme of a middle class quality of debating club. Our criticisms offered on the first appearance of the Imperial rescript are fully justified. It will be remembered that we stated it to be merely an effusion prompted by the near approach of the German elections, and its object to be to detach the working classes from the Social Democrats. In this it has egregiously failed, but, as it cannot be withdrawn immediately, its functions have been limited to the discussion of the above proposals, which will be about as harmless and possess as much value as those of the monks of old, who used to hotly debate the question of how many angels could dance upon the point of a needle and many other similar absurdities. A foreign journal, with which we agree, points out that, as no representatives of the artisan classes will be present at the Conference, it will only be a meeting of diplomatists and professional economists, and will only serve to furnish these gentlemen with an opportunity for complimenting the German Emperor, and for enjoying the hospitality of the German Court and capital.

Designing.

NEW DESIGNS.

DRESS FABRICS.

Design 52 is given as an example of a type of figure likely to be much in vogue for some time to come. Briefly, it consists of a check with a floral figure developed within; thus each figure is completely surrounded and cut off from the neighbouring figures. The design in question might be materially improved in many ways. Graceful form should be applied in a graceful manner; thus in most cases the best effect will be obtained by allowing the figure to break into the symmetrical form employed, whether square circle, etc., for edging in the figure as the method employed in Design 52, always gives the idea of extreme limitation in application, and this is what should be avoided as much as possible; thus, repetition, though a necessity, may be so clothed with skilful application, and the evidence of thorough mastery in the adoption and use of forms, that an effect rather pleasing than otherwise is the result. As intimated, the square is not the only form that may be used for this class of effect; circles, triangles, etc., will furnish useful figures for this purpose, only extreme care and skill are requisite, and both weave and

design should be applied with the distinct idea of reducing to the requisite extent the squares, circles, or whatever is used.

Design 53 may be employed either as a cotton, silk, or cotton warp and silk or lustre warp dress fabric. If used for cotton or silk, the figures and check should be developed with both warp and weft. Thus the check itself may consist principally of warp flush, and the floral effect of weft flush, with the exception of the central ball spray, which should be of warp. As a cotton warp and lustre weft both the check and floral effect should be developed with weft, and the plain ground be introduced elsewhere.

Designs 53, 54, and 55 are suggestions for use in forming the check, or whatever form is adopted for designs of the class just mentioned. These examples will doubtless suggest many more, but great care must be exercised to soften down all lines to the requisite degree, though care must be taken not to do this to too great an extent, or all the characteristic features of the design will be lost. Endeavours should rather be made to render the check itself of so interesting a structure as to call attention rather to the figures employed than to the fact that it is a check, and only a check.

LOONGEE AND DHOOTIE.

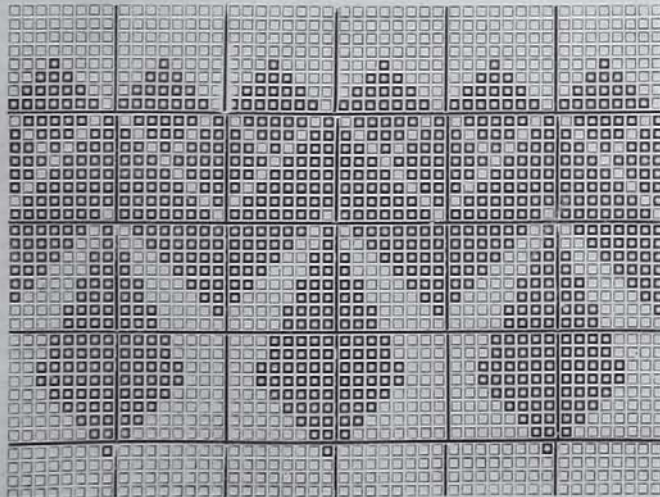
Loongee and Dhotie design, from Salem, Madras. Two pieces woven together with a tab between to permit of their being readily separated; the longer portion is worn round the body, the shorter one over the shoulders. Length of longer portion, 5 yards 9 inches; length of shorter portion, 3 yards. Total length, 8 yards 9 inches; width, 1 yard 9 inches; weight, 1 lb. 11 ounces. Borders one inch and a half each, with Kutar edge. All the ground of these borders, with the exception of the green, is a deep red cotton, the only silk used being white in imitation of silver, in the middle or centre figures of border. The cross borders at each end are of coloured stripes, red cotton, and yellow silk; one three inches, the other three-quarters of an inch, each checked 3 yellow 3 red; the centre of the cloth unbleached, *no size*. The design is varied according to the district by the introduction of other colours, although little or no departure takes place from the following favourites—white first, then red, yellow, green, blue, purple, sometimes, but rarely, black. Nearly all the dark tones are relieved by embroidery, gold being used whenever possible.

The figures are principally of the diamond form, simply placed in different positions, or broken up by wavy lines and dots; but always having a beautiful effect and harmony of colour.

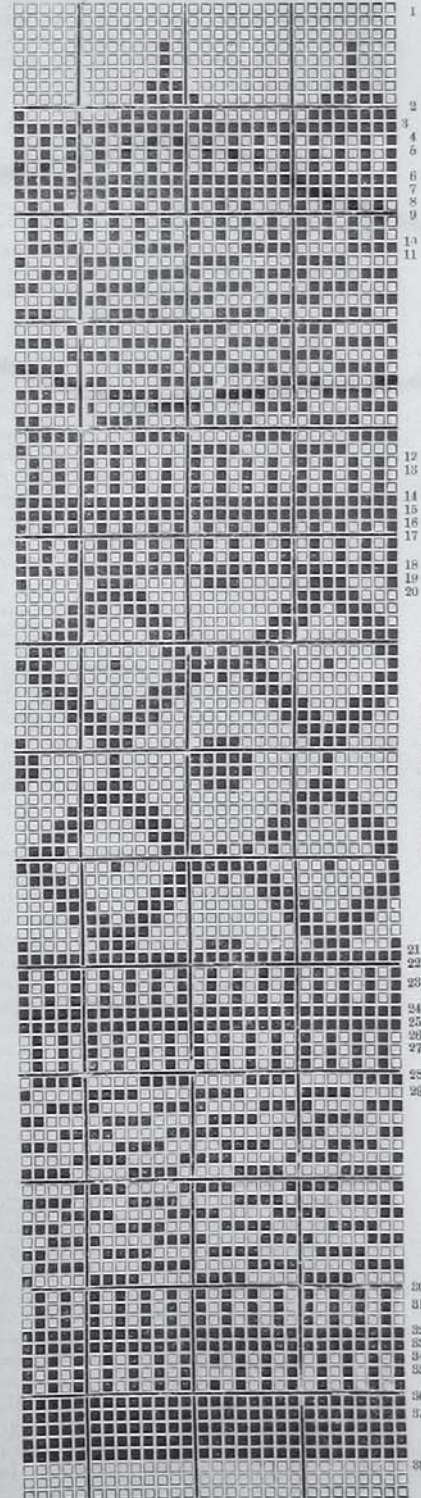
Below we give particulars of the colouring:—

- From 1 to 2 inclusive—Kutar edge. Dark type: red.
- 3—4. Red.
- 5—6. Red and yellow.
- 7—8. Red.
- 9—10. Red and yellow.
- 11—12. Light type: green. Dark type: yellowish green.
- 13—14. Red and yellow.
- 15—16. Red.

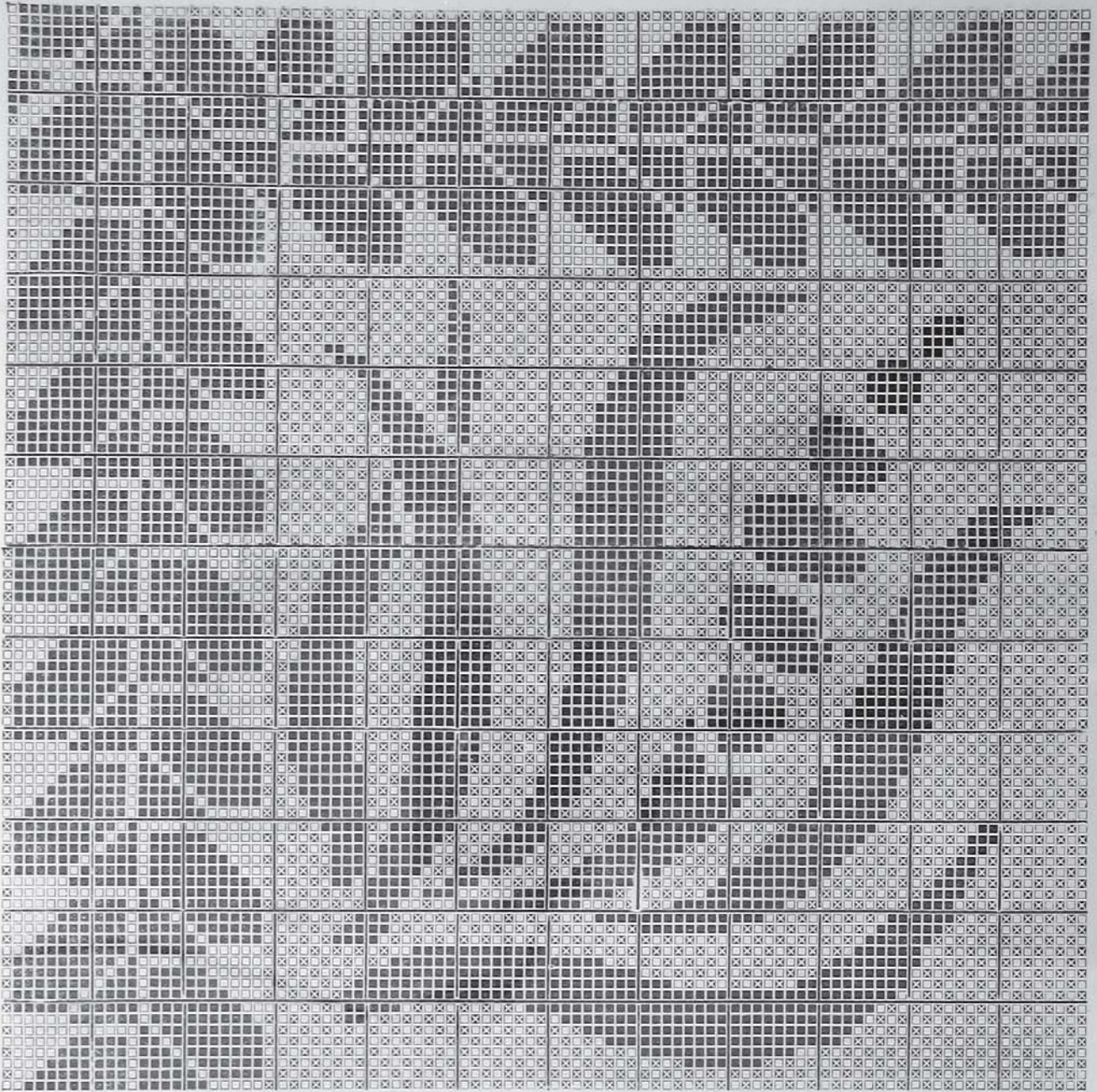
- 17—18. Red and yellow.
- 19. Red.
- 20—21. Light type: white silk. Dark type: Turkey red.
- 22. Red.
- 23—24. Red and yellow.
- 25—26. Red.
- 27—28. Red and yellow.
- 29—30. Light type: green. Dark type: yellowish green.
- 31—32. Red and yellow.
- 33—34. Red.
- 35—36. Red and yellow.
- 37—38. Red.



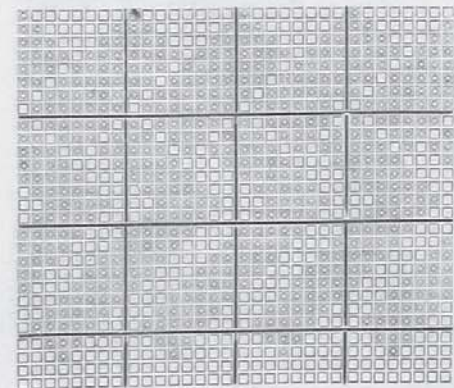
DESIGN 54.



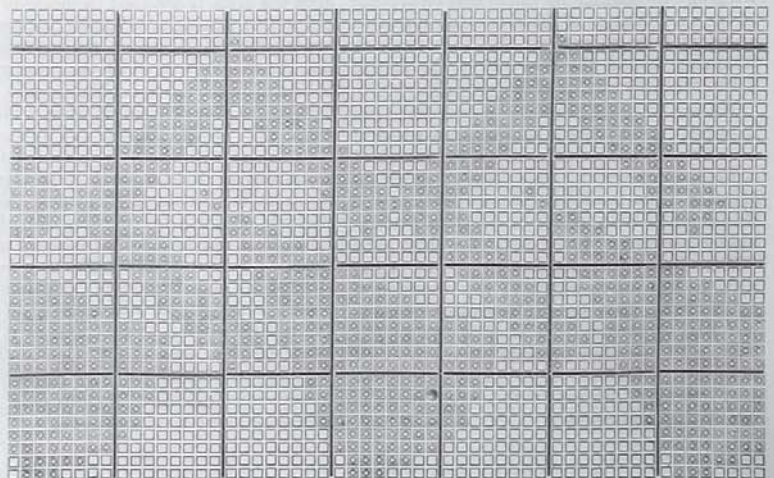
LOONGEE AND DHOOTIE.



DESIGN 52.



DESIGN 53.



DESIGN 55.