

CARPET EXHIBITION AT VIENNA.—Reference has been made several times in *The Textile Mercury* to the Oriental carpet exhibition which will shortly be held in Vienna. The Austrian Trade Museum is preparing in connection therewith an elaborate work on Eastern carpets, to be issued in parts within the next three years. It will contain over a hundred coloured plates, and the descriptive letterpress will be written by the greatest living authorities on the subject. The cost of the work to subscribers will be about twelve pounds. The principal carpets to be shown at this year's Exhibition, as well as various other important specimens that will not be seen here, will be described and reproduced among the coloured plates. A similar publication is projected at South Kensington in reference to the principal carpets in England, India, and the British Colonies. But publications give at best but a faint reflection of the reality, and it is clear that for those who take an interest in ancient or modern carpets the forthcoming Vienna Exhibition, which will remain open until the middle of June, will present an opportunity of seeing a collection of gems in carpet weaving and design such as is not likely to occur again for many years to come.

Designing.

NEW DESIGNS.

FIGURED MANTLE CLOTH.

Design 28 is a species of figure which lends itself to various forms of development, consisting of bold, large surface effects. Structural modifications will yield the best results, though as developed here a good effect will be produced with the following plan:—

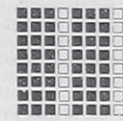
<p><i>Warp.</i></p> <p>All 2 30's black worsted. 14's reed 4's.</p>	<p><i>Weft.</i></p> <p>1 pick 15's black worsted (for ground), 1 pick 60's black or slate silk (for figure). 56 picks of ground per inch.</p>
---	---

The figure, to be developed in silk, is developed in cross type. If a brighter effect than

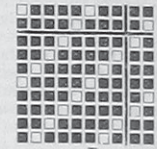
the above is required the warp and weft may vary in colour, preferably approaching complementaries, while the silk also may be brightened. It will, however, be found that a slight variation in the coloured yarns produces a marked variation in the cloth.

Probably the best result will be obtained as a matelasse made to the following particulars:—

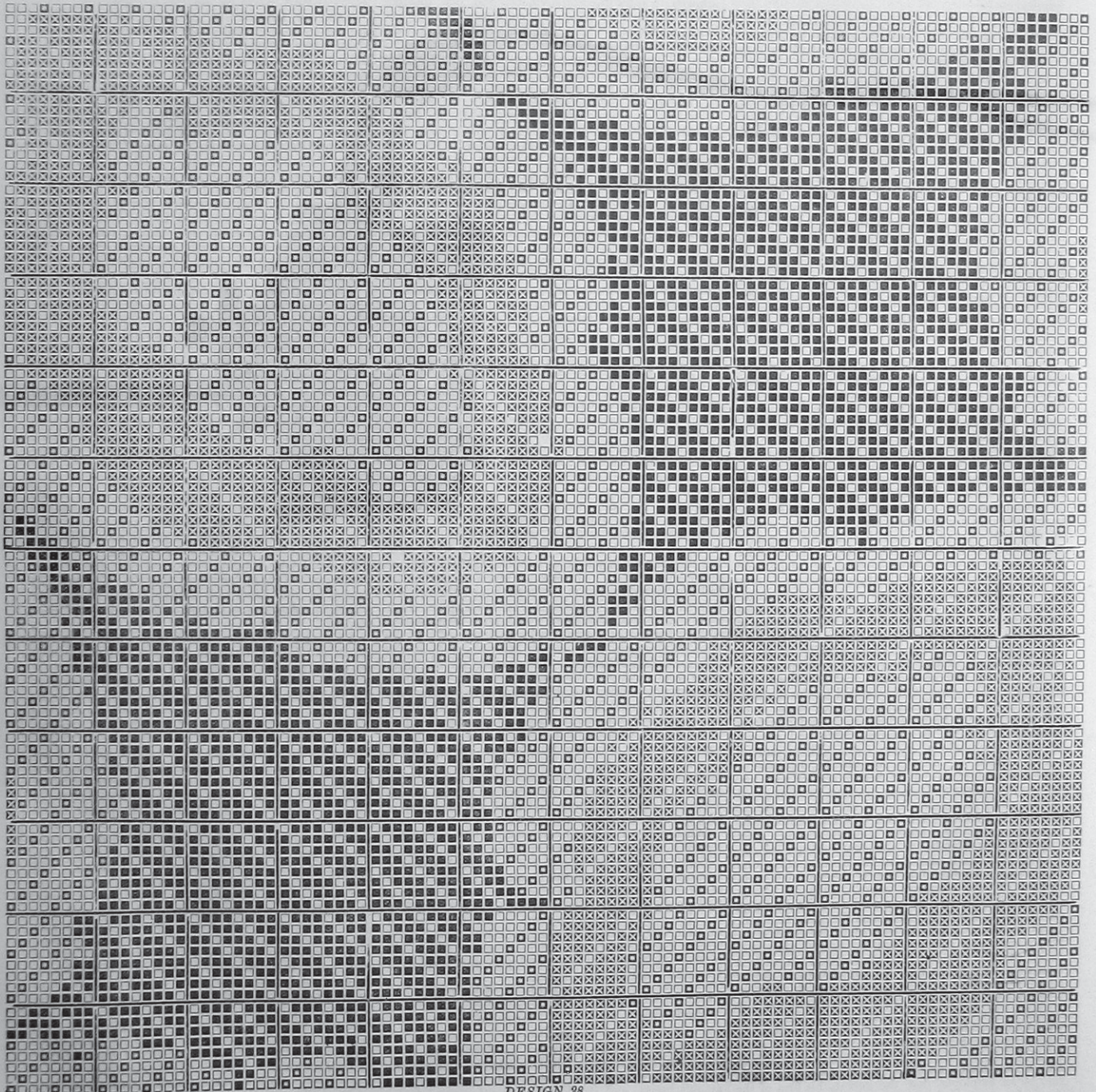
<p><i>Warp.</i></p> <p>All 2/40's red or black cotton. 18's reed 2's.</p>	<p><i>Weft.</i></p> <p>1 pick 20 sk. woollen (interweaving plain), 1 pick 10's mohair (for figure). 36 picks of ground per inch.</p>
---	--



A



B.



DESIGN 28.

Under these circumstances the figure in cross type might be developed as far as possible in solid flush, the ground as *Plan A*, and the figure developed in solid type as *Plan B*. The maximum flush allowed should be about eight.

We need scarcely add that if this design be developed for a larger machine a much more efficient rendering of the detail, upon which much depends, will materially increase its value.

NEW DESIGN FOR DRESS GOODS, ETC.

We are now nearing the season when no small perplexity is experienced in the choice of suitable materials for dress goods: there is such a bewildering number of shades and tints that a decision is almost impossible. Brown is likely to become a fashionable colour, although it is rather trying to most complexions, but to compensate for this it can be worn in many varieties of shade; it blends charmingly with maize, marigold, soft pinky shades, palest blue, and other colours, and lends itself to quite a marvellous number of combinations, which are at once beautiful and useful. The new pink almost verges upon the old-fashioned magenta; a little of it goes a long way and requires to be most judiciously mixed with other shades. Royal blue is coming into favour, and deep purple has made its reappearance. Among newer shades are a beautiful violet, a very pale stone colour, a brilliant turquoise, an exquisitely delicate grey, and lemon of a pure, clear tint. The new greens approach blue tints as near as possible. Bright Spanish yellow is combined with black in many of the leading costumes.

We give this week a novel and unique design for dress goods, vestings, etc.: 60 end draft, 20 shafts, 20 to the round. An equal number of warp ends will be seen by the draft to be on each shaft—a very desirable advantage in drawing the warp through the healds, especially in intricate drafts. A very close-set reed will be necessary to give this design full effect; we suggest a 30 reed, four in a dent, with 30's twist for warp, and 48 picks per inch of 16's weft. These particulars would make a good vesting cloth. For a dress fabric the reed may be a 20, four in a dent, with 20's twist for warp, and 60 picks per inch of 20's weft. Of course these particulars, in both instances, are simply given as a sort of guide, which may be varied according to fancy or circumstances: for instance, linen, worsted, or tow wefts may be used in place of cotton; or the warp may be all spun silk and weft cotton, which would produce

a very charming effect; warp pattern one of brown, one of white throughout, or what is called end and end; weft, one shuttle black; variations in warp may be—lilac and white, end and end; weft, dark brown; warp, violet and light slate, end and end; weft, dark brown; warp, pink and light slate, end and end; weft, dark brown; warp, light green and light white, end and end; weft, black; warp, lemon and light cream, end and end; weft, black; warp, turquoise and light cream, end and end; weft, black. The design will readily lend itself to any combination of colour and material. We believe it will be found a useful addition to the cotton or silk fabrics which will shortly claim the attention of the public.

COLOURED FANCIES.

Coloured fancies: 64 ends per inch of 32's single twist for the ground, unbleached, 32's two-fold yarns for the stripe, 64 picks per inch of 32's single cop weft. Warp pattern: 60 grey unbleached on plain shafts marked 1, 2, 3, 4, then 4 dark blue two-fold on 5, 6 shafts; 12 grey unbleached on 1, 2, 3, 4 shafts; 4 bleached white two-fold on 5, 6 shafts; 12 grey unbleached on 1, 2, 3, 4 shafts; 4 bleached white two-fold on 5, 6 shafts; 12 grey unbleached on 1, 2, 3, 4 shafts; 4 bright, clear red two-fold on 5, 6 shafts; weft all grey unbleached cop. The two-fold yarns must be on a second beam, as will be seen by the pegging plan, which we have numbered in draft and tread. The double yarns are all on the 5th and 6th shafts; the ground or unbleached single yarn is on 1, 2, 3, 4. With this explanation we are better enabled to save space and at the same time give a few more warp patterns, all being two in a dent throughout the reed.

80 unbleached grey,	4 bleached white two-fold.
12 "	" 4 red "
12 "	" 4 dark blue "
12 "	" 4 red "
12 "	" 4 dark blue "
12 "	" 4 bleach white "
Weft all grey cop. Another example:—	
40 unbleached grey,	4 deep purple two-fold.
10 "	" 4 bleached white two-fold.
10 "	" 4 " " "
10 "	" 4 deep purple "
10 "	" 4 dark yellow "

Many sizes of stripes can easily be formed and different colour combinations introduced with advantage. We have given those most likely to take, either for the home or export trade. They can be made by ordinary looms and in a very economical way.

ZEPHYR LAWNS.

Zephyr Lawns, quite plain, will be in demand if we are to have any summer this year. The make will be 60 ends per inch of 30's twist for warp, 60 picks per inch of 30's weft, soft spun. Warp, all sky, cardinal, every shade of brown, navy, and black, with white weft in every case. Whatever shade the ground may be, a careful finish of these goods will be necessary to make them pleasing to the eye.

STRIPES.

A variety in stripes is enquired about: 72 ends per inch, 30's twist, 72 picks per inch, 30's weft, plain weave. Warp patterns:

- 1st. 60 rose pink, 60 light blue; weft, all white, 32 inches in cloth.
- 2nd. 60 light blue, 60 white,
- 3rd. 60 white, 60 shrimp,
- 4th. 36 white, 36 blue,
- 5th. 36 shrimp, 36 blue,
- 6th. 36 shrimp, 36 cream,
- 7th. 36 navy blue, 36 sky,
- 8th. 36 deep purple, 36 faint lemon,
- 9th. 36 cardinal, 36 cream,
- 10th. 36 seal brown, 36 cream,

Weft, all white.

And many other combinations in broken patterns and colours too numerous to mention. The yarns must be very even and of good quality throughout.

PLAIN AND FANCY MUSLINS.

A revival is evident of the old-fashioned muslins, for which patterns are in active preparation. We give a few in plain weaves, and hope to submit next week a number in checks and stripes, plain, satin, twilled, figured, etc. These we now give are plain.

1st pattern.—Unbleached checks; warp and weft all grey; 52 ends per inch, one and two in a dent, of 24's twist; 52 picks per inch of 24's weft. A coarser quality, 18's warp and weft. Warp pattern: 4 one in dent unbleached grey, 4 unbleached grey 2 in a heald, one heald per dent. Weft pattern: 4 single picks, 2 in one shed, with outer selvage end acting as a catcher, and 2 in the reverse shed, making 8 picks in all of grey unbleached cop weft. (We give the pegging plan for this pattern, which will be a guide for all that follows.)

2nd pattern.—2 two in a heald; unbleached grey; one heald per dent; 2 one in a dent; 2 two in a heald; one heald per dent; 8 single, one in a dent. Weft pattern the same.

3rd pattern.—28 two in a heald, one heald per dent; 10 single, one in a dent.

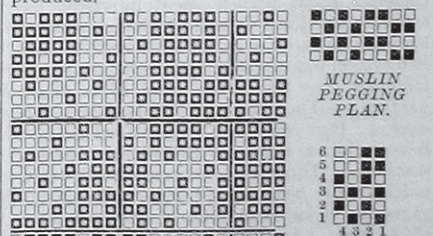
4th pattern.—2 two in a heald, 1 single; 16 two in a heald, 8 single; 8 two in a heald, 8 single. Weft same.

5th pattern.—16 two in a heald, 8 single; 16 two in a heald, 24 single. Weft same.

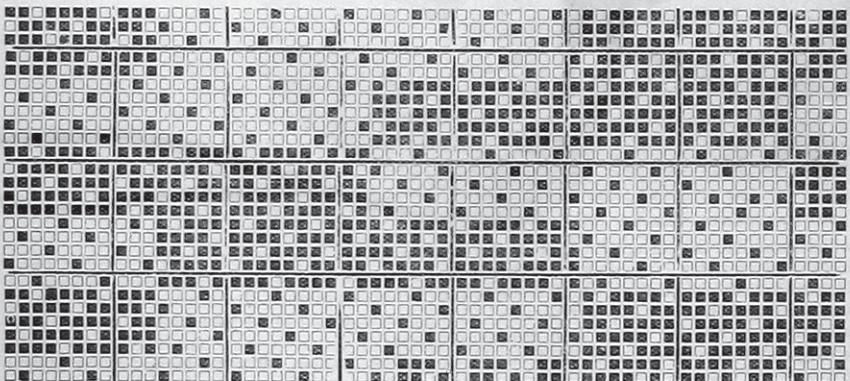
6th pattern.—30 two in a heald, 14 single; 4 two in a heald, 4 single; 4 two in a heald, 14 single. Weft same.

7th pattern.—18 two in a heald, 12 single; 2 two in a heald, one dent empty; 2 two in a heald, 12 single; 20 two in a heald, 8 single; 2 two in a heald, 8 single; 2 two in a heald, 8 single.

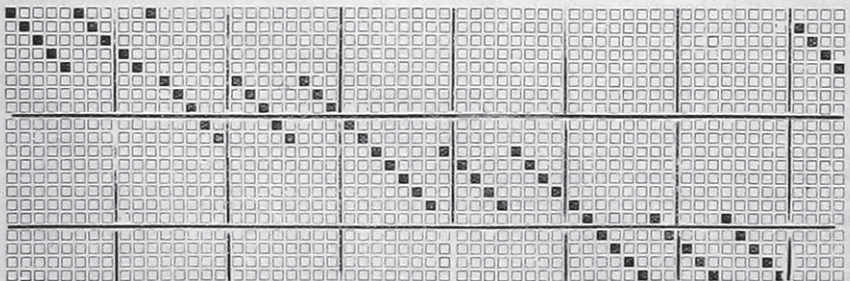
The whole of these patterns are unbleached yarns both warp and weft, the two in a heald one dent, the single one in a dent. A very careful bleaching will be of importance, and good evenly-spun yarns are necessary to give clear light tints if piece-dyed. We have indicated the line of patterns that will be in request, but any amount of variations can be produced.



COLOURED FANCIES PEGGING PLAN. COTTON DRESS GOODS.



NEW DESIGN FOR DRESS GOODS.



DRAFT FOR NEW DESIGN DRESS GOODS.