

Only Four Harnesses

BY JOHN H. CLAYTON

IN writing this article on some few of the smaller pieces of hand weaving, I have tried to keep in mind the fact that the majority of the weavers are doing their best to keep alive the traditional art and craft of our forbears, who were not equipped for the elaborate pieces of weaving put out by the professional weavers.

Our ancestors created a new art that was, and still is, peculiar to the American Colonial people, and it is fitting that we should revive and carry on that inspiring work that they endowed with life.

Only four harnesses — four are not very many, and yet, how many weavers can use four harnesses to their fullest extent? In addition to the four-harness overshot of colonial days, we have the plain diagonal, crêpe, crackle, basket, her-ringbone, diamond, diaper, rib, and all of the various combination weaves made by using two or more of the above in the same draft.

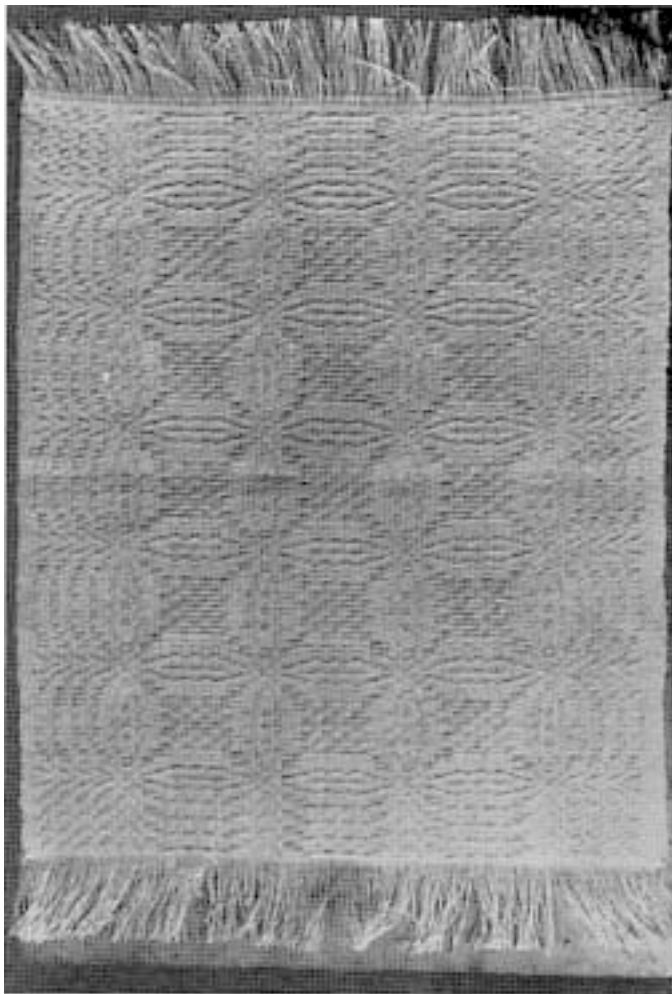
Only four harnesses — four are not very many, and are

we glad, when we set up our looms, that we do not have to follow a draft for ten, twelve or more harnesses, the intense concentration, the hours of time to produce a piece of weaving that is elaborate almost to the point of boredom.

Some of the following patterns may be familiar to many of you, as they are mostly of the old-time colonial patterns, but I sincerely hope that you may gain an inspiration from them, or from the technique employed, that will repay your reading of this.

Weavers must keep in mind the fact that the true beauty of their pieces cannot be fully brought out unless they use only the finest yarns that can be secured, and in fast and beautiful shades, as the most beautiful pattern written will look drab and ugly if not produced in the right type of yarn for that purpose, or a cheap yarn made to sell at a price, and not for its own beauty.

As our first piece, we will take the Orange Peel, shown in the accompanying picture and draft.



Orange Peel

Orange Peel. Draft and instructions. Draw in as shown on the accompanying draft, reading:

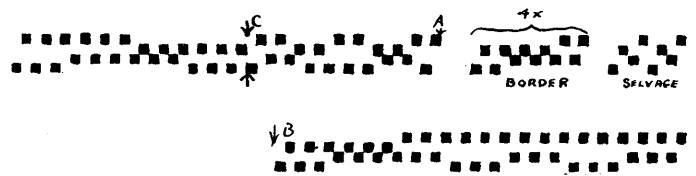
Selvage	8
Border, 4x	48
Pattern, A to B, 3x	258
Pattern, A to C	20
Border, 4x reversed	48
Selvage	8

Total of 390 warp ends sleyed 30 to the inch is 13 inches wide.

Orange Peel
 Tabby 1-2, 3-4
 31—2x }
 41—2x } 4x, border
 42—2x }

 32 A
 31
 41
 42
 32
 42
 41
 31
 32 C
 42—3x
 41—3x
 31—3x } 3x
 32—3x }
 31—3x
 41—3x
 42—3x B

Weave border four times as written, then from A to B as many times as you require for the length, then put in from A to C, then border reversed.



ORANGE PEEL

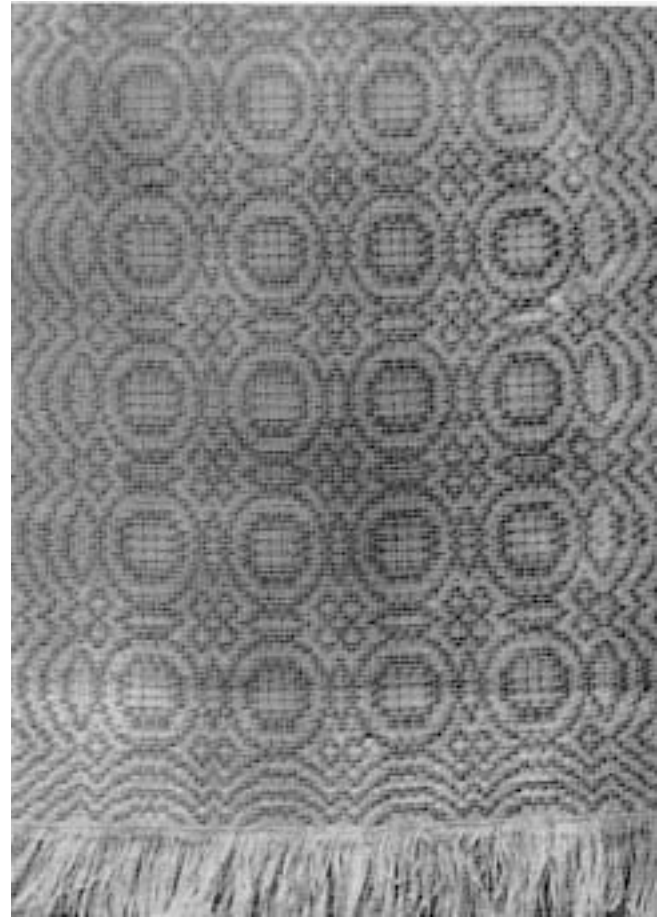
On the piece shown in the illustration, the warp was 20/3 white cotton, the tabby was 20/2 white cotton, and the filler or pattern thread was Bernat's linen floss, natural shade. This piece made a beautiful and very rich-looking place mat for the table. The warp was sleyed 30 threads to the inch, which gave a finished width of 12 inches, but it may be widened to 16 inches by merely adding one more repeat of the pattern from A to B, and one more repeat of the border on each side.

This piece has also been used woven in Bernat's Perle No. 10 white, sleyed at 24 to the inch with linen floss in color for the pattern yarn.

The piece labeled "Hope" was one of our first attempts at designing a pattern, and was so named because we had high hope that we should have a measure of success in our venture. We have been well rewarded by our efforts.

This was woven with Bernat's 24/3 natural Egyptian warp, sleyed at 30 to the inch, and using the same yarn for tabby. The pattern thread is Bernat's Vittora Strand, in the golden yellow shade, and is a very effective piece when used as a runner for an end or library table, and is also very good used as place mats for a table, with a runner in the 16-inch width.

We have woven the "Hope" pattern in so many different combinations of yarn, that it is hard to know which were the most attractive, but, judging from the orders received, the above combination was the most sought after. For the more formal room or setting, this is very rich and dignified when woven in Perle No. 20 Natural warp and Perleen 1009 or 1042 for the pattern.



Hope

Hope. Draw in as draft:

Selvage	8
Border, 4x	56
Pattern, A to B, 4x	312
Pattern, B to C	3
Border reversed	56
Selvage	8

Total of 443 warp ends sleyed 36 is 12¾ inches wide.

Hope

Tabby 1-3, 2-4

12—2x	} 6x, Border
14—2x	
34—2x	
23—2x	

12—2x	} A
14—2x	
34—3x	
14—2x	

12—2x Weave border as indicated,
 23—2x then pattern from A to B as
 34—3x many times as necessary for
 14—3x length, then add from A back-
 12—3x wards to start.
 14—1x
 12—3x
 14—1x
 12—3x
 14—3x
 34—3x
 23—2x
 12—2x
 14—2x
 34—3x B

The pieces labeled "Diamond," "Maltese Cross," "Church Windows," are all rather well-known patterns, the "Maltese Cross" being copied from an old issue of the HANDICRAFTER which was "borrowed" by some weaver, and is not yet returned, therefore I regret that I cannot name the author of this very charming little pattern. The "Diamond" figures vary largely in all of the old colonial patterns, and the "Church Windows" is also an old classic.

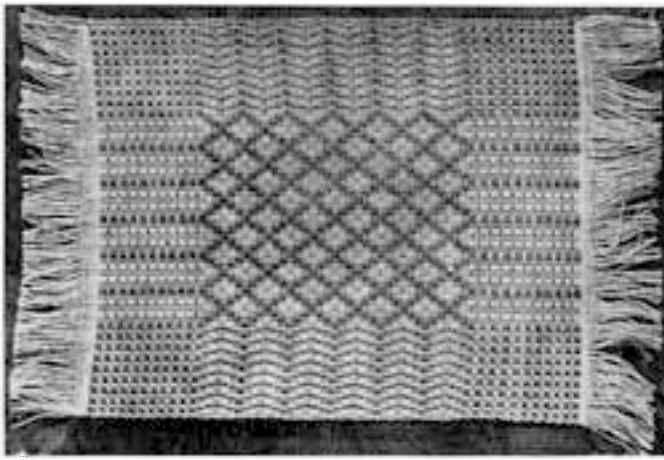
All of these were woven in 20/3 white cotton with 20/2 for the binder, but some of you may get a suggestion from the pattern yarn used.

On the illustration of the "Maltese Cross" I used Vittora Strand, shade 22; on the "Diamond" I used Perleen, shade 1004; and on the "Church Windows," Weaving Special wool in shades 16 and 799.

These have also been made using 20/2 cotton in colors and winding two or sometimes three colors on a bobbin at one time, such as 25 and 34 together, 20 and 39 together, etc., also using two strands of contrasting color of Weaving Special wool wound on the same bobbin. Of the last, an especially good sellers has been shades 16 and 799.

These three pieces are all so nearly the same number of ends, that they are frequently put on a warp all at the same time, the required pieces woven, then the warp is drawn





Diamond

Diamond. Draw in as draft:

Selvage.....	8
Border, 6x.....	36
Pattern, 5x.....	100
A to C.....	3
Border reversed.....	36
Selvage.....	8

Total of 211 warp ends sleyed 30 to the inch is 7 inches wide.

Diamond

34—3x }
12—1x } Border 8x

34—3x Weave the border as written,
14—3x then the pattern as many times
12—3x as necessary, then the border
23—3x reversed.
12—3x
14—3x
34—3x



Maltese Cross

Maltese Cross. Draw in as draft:

Border, 11x.....	44
Pattern, A to B, 2x.....	84
Pattern, A to C.....	37
Border reversed.....	44

Total of 209 warp ends sleyed 30 is 7 inches wide.

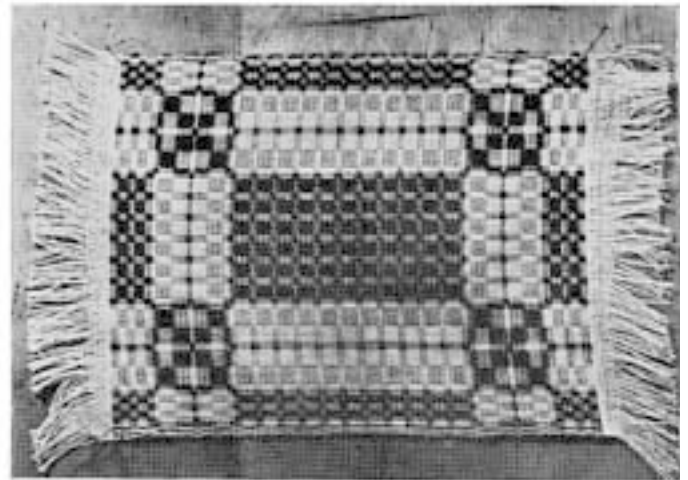


Maltese Cross
Tabby 1-3, 2-4

14
34
23
21

14—1x
34—2x
23—2x
12—2x
14—2x
34—2x
14—1x
12—1x
23—1x
34—1x
23—1x
12—1x
14—1x
43—2x
14—2x
12—2x
23—2x
34—2x
14—1x

Weave border as written and as deep as required, then weave pattern and repeat, then reverse border.



Church Windows

Church Windows. Draw in as draft:

Selvage.....	4
From 1 to 66.....	66
From 67 to 78, 6x.....	72
From 66 back to 1.....	66
Selvage.....	4

Total of 215 ends sleyed 30 is 7 1/4 inches wide.

Church Windows

34—3x }
14—4x } 2x
34—3x

23—2x A
12—6x
23—6x
34—2x
23—6x
12—6x
23—2x C

Weave border, then A to B, then from C back to A.

34—2x B
14—6x



into one of the other patterns, thus saving quite a fair amount of warping.

The Rings and Flowers pattern shown is a very great favorite in some parts of the South, and in others it seems almost unknown, which seems rather strange, considering the utility of this design. We have used this same pattern in our studio for pillows, table scarfs, bedspreads, dress material, draperies, luncheon sets and several other uses that do not come to mind at present, so that you will readily understand why we call it a very versatile pattern.

Used with a Homespun filling over a 16/3 warp at 30 to the inch, this is very good for pillows and runners, while used with a 20/2 mercerized warp, natural, with a Perleen or Vittora Strand filler it makes an unusually attractive luncheon set or a dainty scarf for milady's dressing table. If a 24/3 natural warp is used at 30 to the inch, and a Fabri or Weaving Special filling, this will make a nice spring or fall dress.

Using a silk warp such as Bernat's Spun Silk, with Art silk as the filling, we have a piece that will harmonize in texture

Rings and Flowers. Draw in as draft:

Selvage.....	8
Border.....	42
Pattern, A to B, 4x.....	456
Pattern, A to C.....	63
Border reversed.....	42
Selvage.....	8

Total of 619 warp ends sleyed 30 gives a width of 20¾ inches.

<i>Rings and Flowers</i>	
23 } 3x	} Border
12 }	
14—2x	
34—2x	
23 } 3x	
12 }	
34—2x	
23 } 8x	
12 }	
14—2x	
34—2x	} Weave border as written, then weave pattern from start to end as many times as required, then weave in 14—2x; 34—2x. Put in border reversed.
23 } 3x	
12 }	
34—4x	
14—4x	
34—2x	
14—4x	
34—4x	
23 } 3x	
12 }	
34—2x	
14—2x	
23 } 3x	
12 }	
14—4x	
34—4x	
14—2x	
34—4x	
14—4x	
23 } 3x	
12 }	

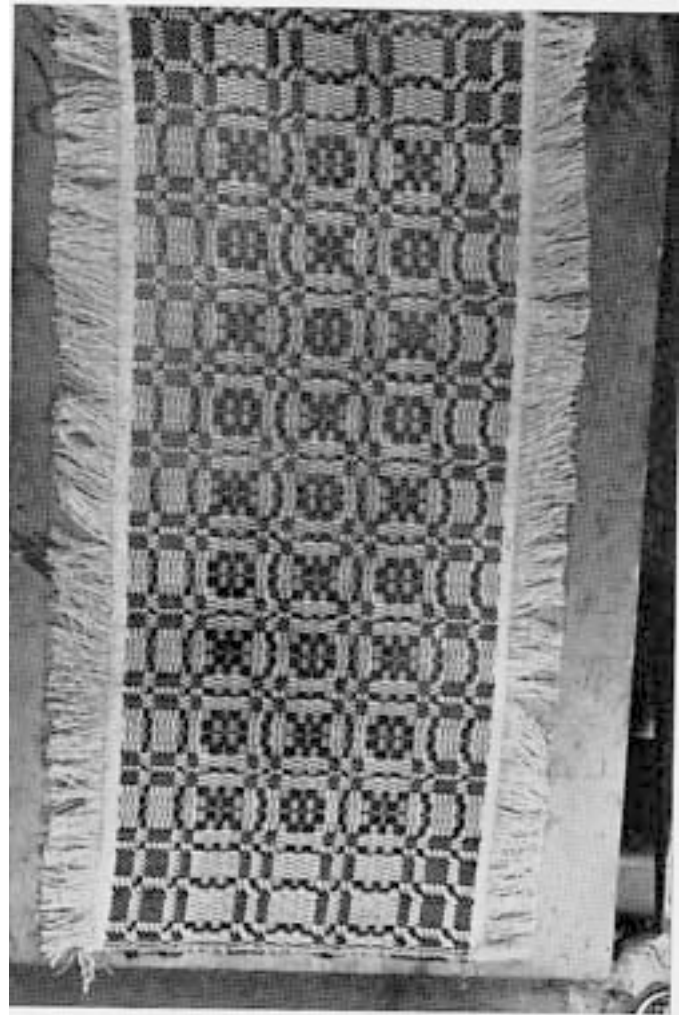
with a room that is filled with silk or satin, and where the colonial homespun would look out of place.

Pillows are always in demand, both large and small, heavy and light, and any of the above patterns can be used for a pillow in any of the yarn combinations, depending on the place in which it is to be used; and I also show one other pattern that has been used for a pillow. This particular one was woven on 16/4 white cotton at 24 to the inch, Bernat's Homespun for the filling yarn in 722 shade, which gave me a heavy yet handsome pillow for the living room.

For the baby sacque shown in the accompanying illustration, we wove the material 42 inches wide, plain tabby weave, from Bernat's Germantown in baby blue and baby pink or white. After washing and pressing, the goods was cut to the required shape and the edges crocheted, the pompons attached, and the result was a piece of infant's wear that any mother can well be proud of.

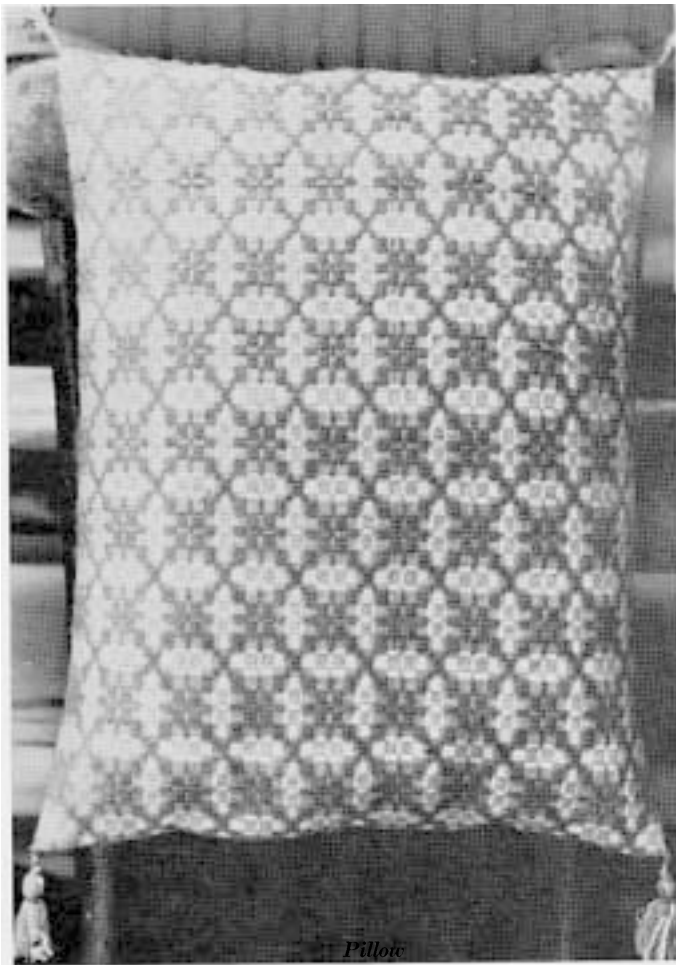
TREADLING INSTRUCTIONS

Since many weavers have their own method of tying up a loom, I am giving these instructions written for the Structo



Rings and Flowers



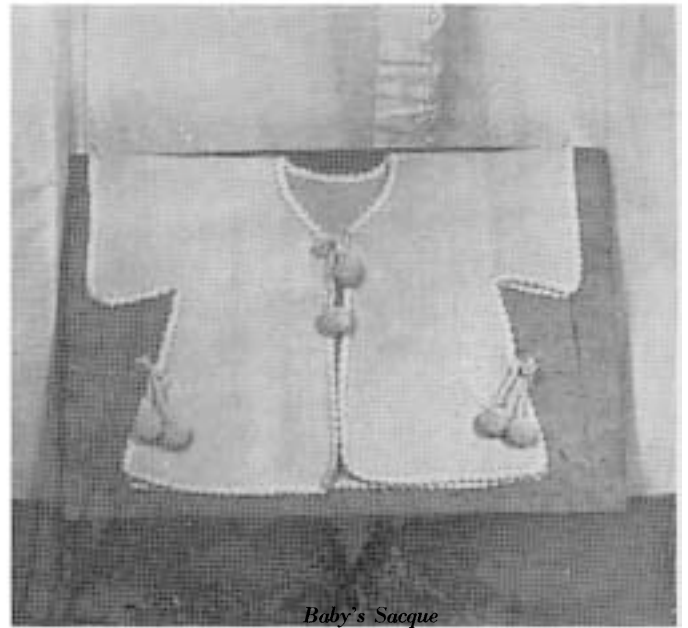
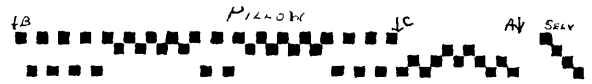


Pillow

Pillow:

Selvage.....	4
Pattern, A to B, 11x.....	506
Pattern, A to C.....	11
Selvage.....	4

Total of 525 warp ends sleyed 24 gives a width of 22 inches.
On the pillow pattern, weave as drawn in.



Baby's Sacque

Baby sacque and blankets, weave as drawn in.

or similar looms, so please keep in mind that the numbers signify that the harnesses are to be lifted.