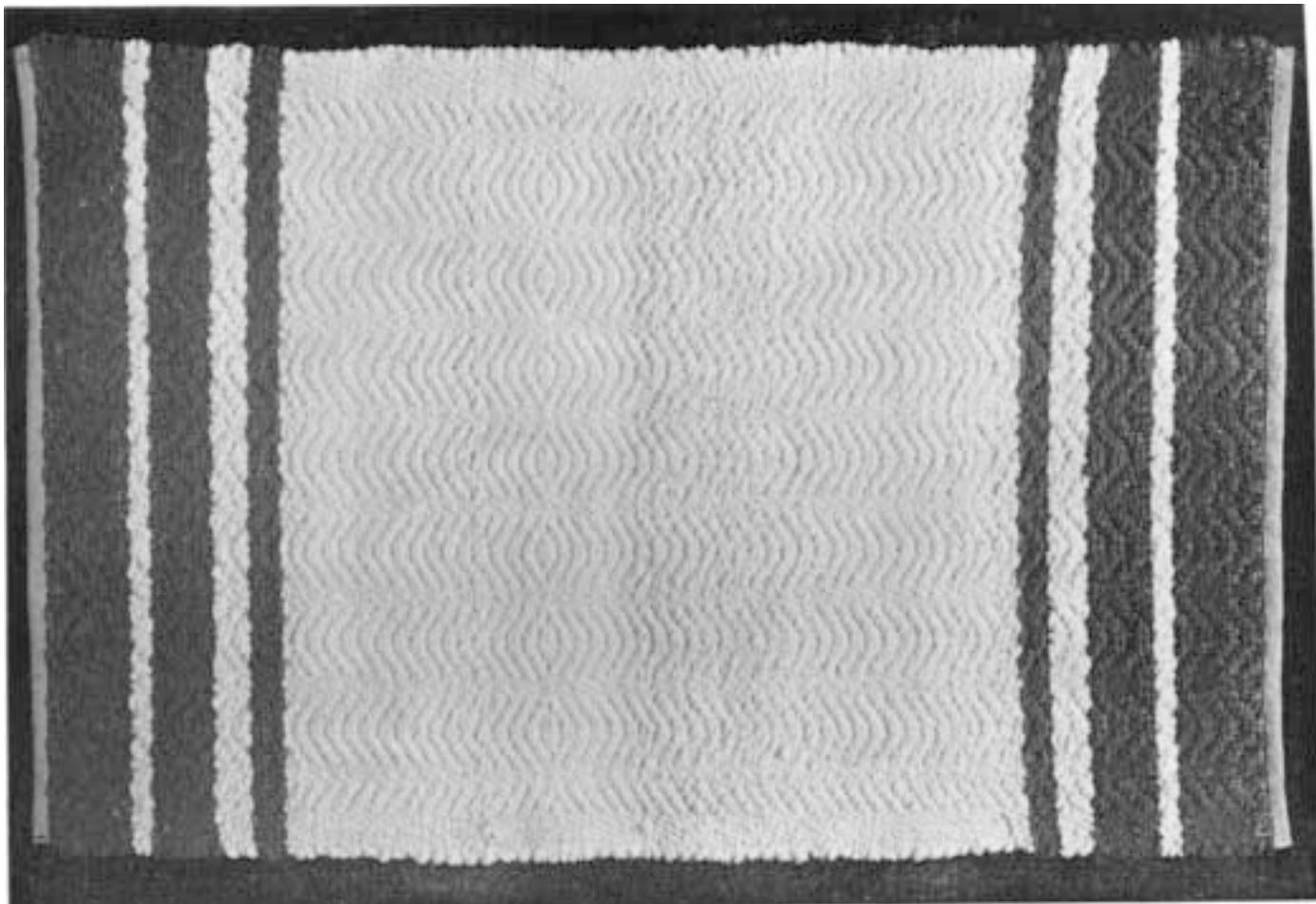


# SUMMER ADVENTURES IN WEAVING

by KATE VAN CLEVE



In the summer of 1939 a group of people from different parts of the country gathered at the Studio in Brookline, to do some intensive weaving.

One of the interesting projects was the making of material for a skirt, jacket and coat to go together. The material illustrated (No. 1) was woven by Miss Josephine Besaw of Cleveland, Ohio, and was used for a short coat. The warp was sport yarn in light and dark blue, four threads of each alternating. The weft was imported Scotch shetland with flecks of color (notice the spots of light in the print).

## DIRECTIONS FOR JACKET

### Materials.

Warp:—1 lb. light blue homespun 594  
1 lb. dark blue homespun 597

Weft:— $\frac{3}{4}$  lb. light blue imported Scotch shetland  
 $\frac{3}{4}$  lb. dark blue imported Scotch shetland

### Warp.

5 yard warp chain of 448 threads (for 30 inch width)  
4 threads light blue and 4 threads of dark blue alternating.

15 dent reed.

Weaving:—Plain weave.

4 threads of light blue and 4 threads of dark blue alternating.

## DIRECTIONS FOR SKIRT

Materials—Either the light or dark blue may be used.

Warp:— $\frac{1}{2}$  lb. homespun

Weft:—1 lb. imported Scotch shetland

### Warp.

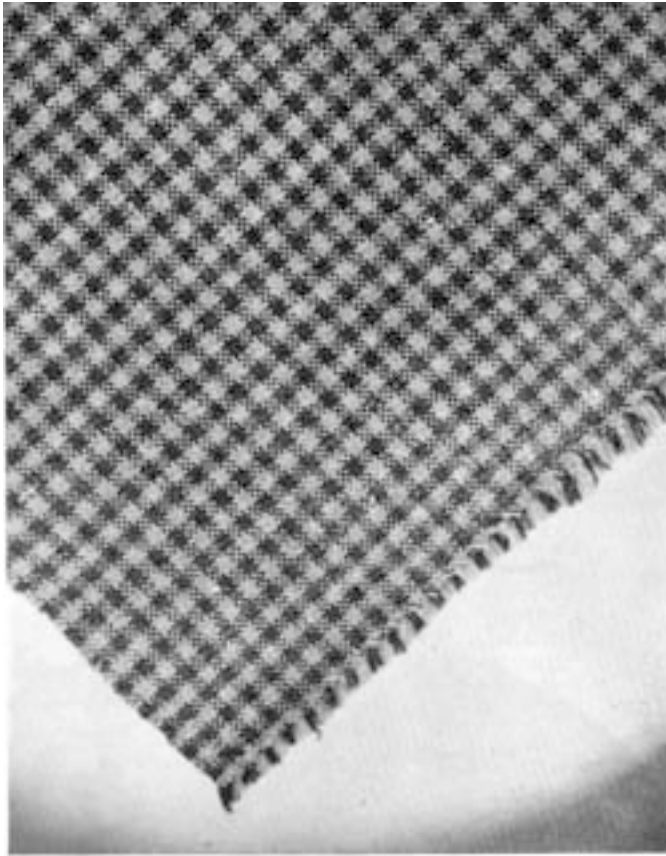
4 yard warp chain of 448 threads (for 30 inch width)  
15 dent reed.

Weaving:—Plain weave.

## DIRECTIONS FOR COAT

In order to make a practical as well as a most attractive Travel Outfit for the trips we all look forward to, a coat is needed. There will probably be enough pieces from these materials for hat and handbag.

This coat may be light or dark, to match the skirt. The weft will be all one color.



**Materials.**

Warp:—1½ lb. light blue homespun  
 1½ lb. dark blue homespun

Weft:—2 lb. imported Scotch shetland

Warp:—7 yard warp chain of 448 threads (for 30 inch width)

8 Threads light blue.

8 threads alternating—dark blue, light blue, dark blue, light blue, dark blue, light blue, dark blue, light blue.

8 Threads dark blue.

8 Threads alternating—light blue, dark blue, light blue, dark blue, light blue, dark blue, light blue, dark blue.

14 Repeats of the above.

Weaving:—Plain weave with either the light or dark blue shetland.

A skirt was woven by Mrs. Edson E. Bridges of Omaha, Neb. which seems well worth describing here.

The warp was of white and grey alternating threads of sport yarn and a grey Scotch shetland with flecks of color for weft.

A twill threading was used with a 20 dent reed.

The short jacket to go with this skirt could be made of white, grey and black warp as follows:—

8 threads white, 8 threads black, 8 threads white and 8 threads grey (5 yards of 600 threads).

Weft:—White, black and grey Scotch shetland.

Weaving:—Treadle for twill, 1-2, 2-3, 3-4, 4-1.

Using grey, black, grey and white forming small squares of 8 threads each.

**CHENILLE RUG (ILLUSTRATED)**

The third most popular project in 1939 was a rug woven of heavy chenille in a shell pattern. The rug illustrated had soft rose borders and white center.

For this shell effect use any small pattern threading such as the honeysuckle. Treadle 1-2, 2-3, 3-4, 4-1 without a binder. Change and reverse 3-4, 2-3, 1-2, 1-4 either in the middle of the rug or two thirds of the way thru the center. To obtain a similar effect use 3 or 4 strands of Bernats regular cotton chenille wound together on your shuttle.