

TEXTURE VARIATIONS – TREADLE MANIPULATION

By MARGUERITE P. DAVISON

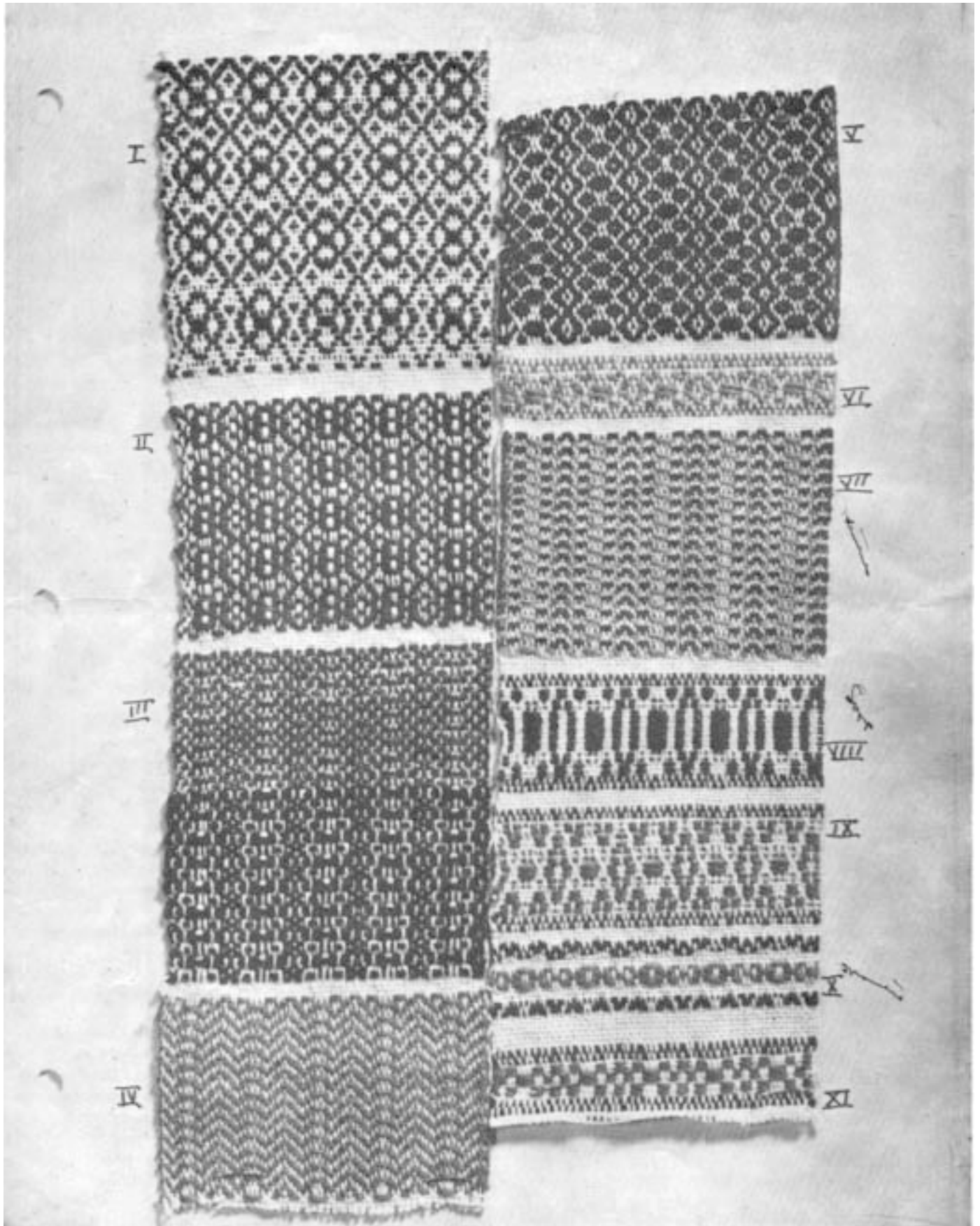


Plate I-a

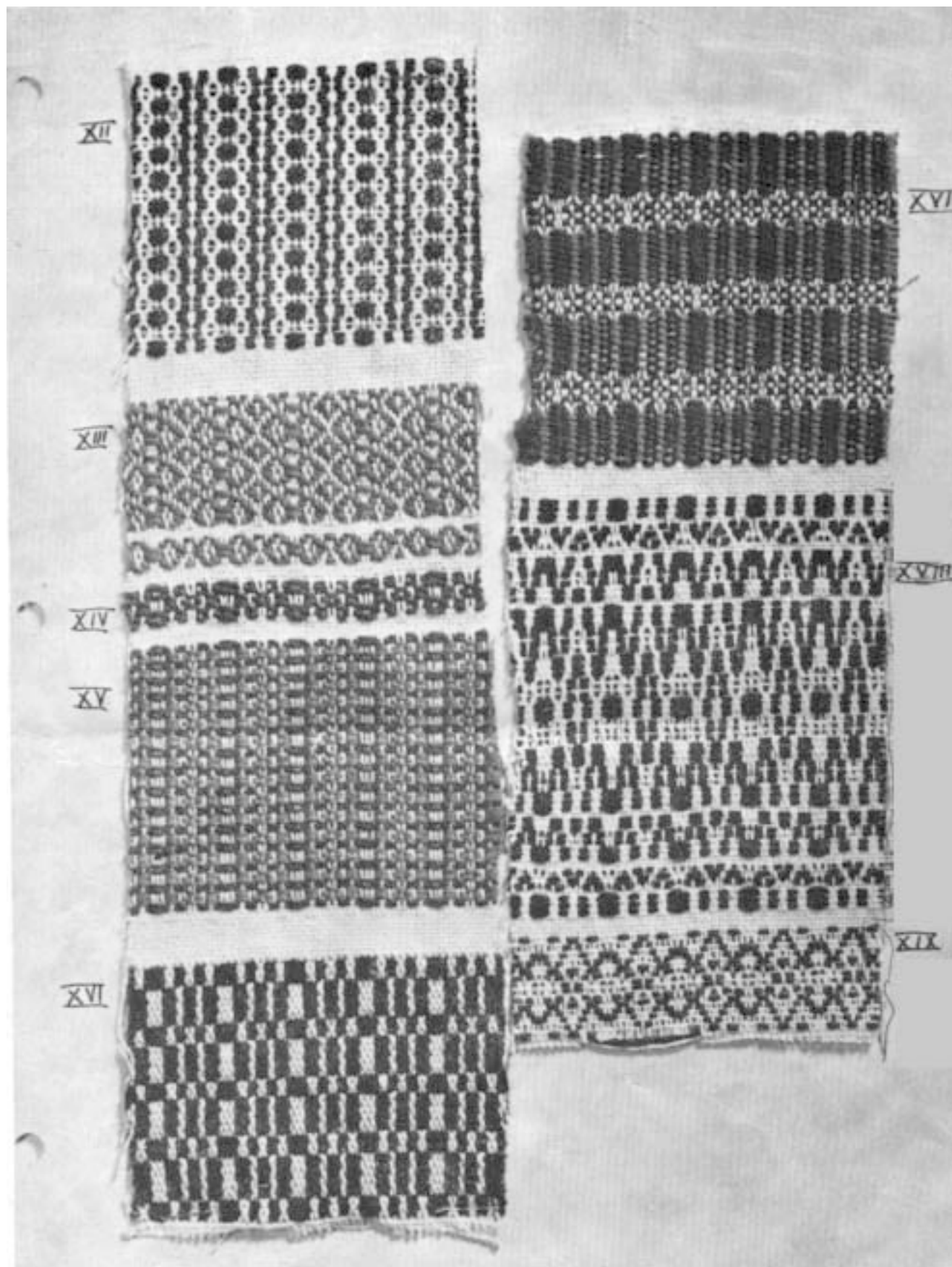


Plate I-b

WEAVER'S FANCY. (CONTINUED)

THREADING.	← REPEAT →				HARNES COMBINATIONS.													
						x	x			x			x	x			x	x
						x			x	x			x			x	x	
						x	x	x					x	x			x	x
						x	x	x					x	x			x	x
	18																	
	TREADLINGS.				TABBY I				XVIII				USE TABBY					
	XII				REPEAT				2				2					
	USE TABBY				1				1				3					
	XIII				REPEAT				1				3					
	NO TABBY				1				1				3					
	REPEAT				1				1				3					
	XIV				REPEAT				1				3					
	NO TABBY				1				1				3					
	REPEAT				1				1				3					
	XV				REPEAT				1				3					
	NO TABBY				1				1				3					
	XVI				REPEAT				3				6					
	USE TABBY				1				1				2					
	XVII				REPEAT				0				1					
	NO TABBY				EIGHT TIMES				0				1					
	O - LIGHT				0				0				1					
	Δ - DARK				0				0				1					
	REPEAT				0				0				1					

Numerous changes may be made in these designs by threading the warp in a variety of colors or textures to bring out stripes or blocks in the pattern. The Finnish Diamond also gives many border designs and is generally a very useful part of any weaver's repertoire, if it is not already there.

The variety of uses to which these small patterns may be put instantly suggests itself to the weaver; the same variety may be obtained from some old favorite by applying the treadlings shown here. In The Weaver's Fancy and Finnish Diamond the usual six combinations of a four-harness loom tie-up are used with the exception of the honey-comb treadling. In the Swiss Twill Design other tie-ups are utilized. Anna Henriksson gave the I and II treadlings in her book. They were intended to be used for upholstery. No. XI of the same sampler is honey-comb with a twill between figures instead of two plain weaving threads usually used. No. IX of that sampler becomes more interesting when developed in three colors. Numbers VII, VIII and X have almost as much depth as honey-comb.

Mr. Crooks very kindly gave permission to use his ingenious little Weaver's Fancy. The variations given in this sampler are only suggestions of the many more that are possible to be woven. It rivals Rose Path in versatility. The illustrated No. XV was woven in two colors and gives the appearance of embroidery.

Plate I-b

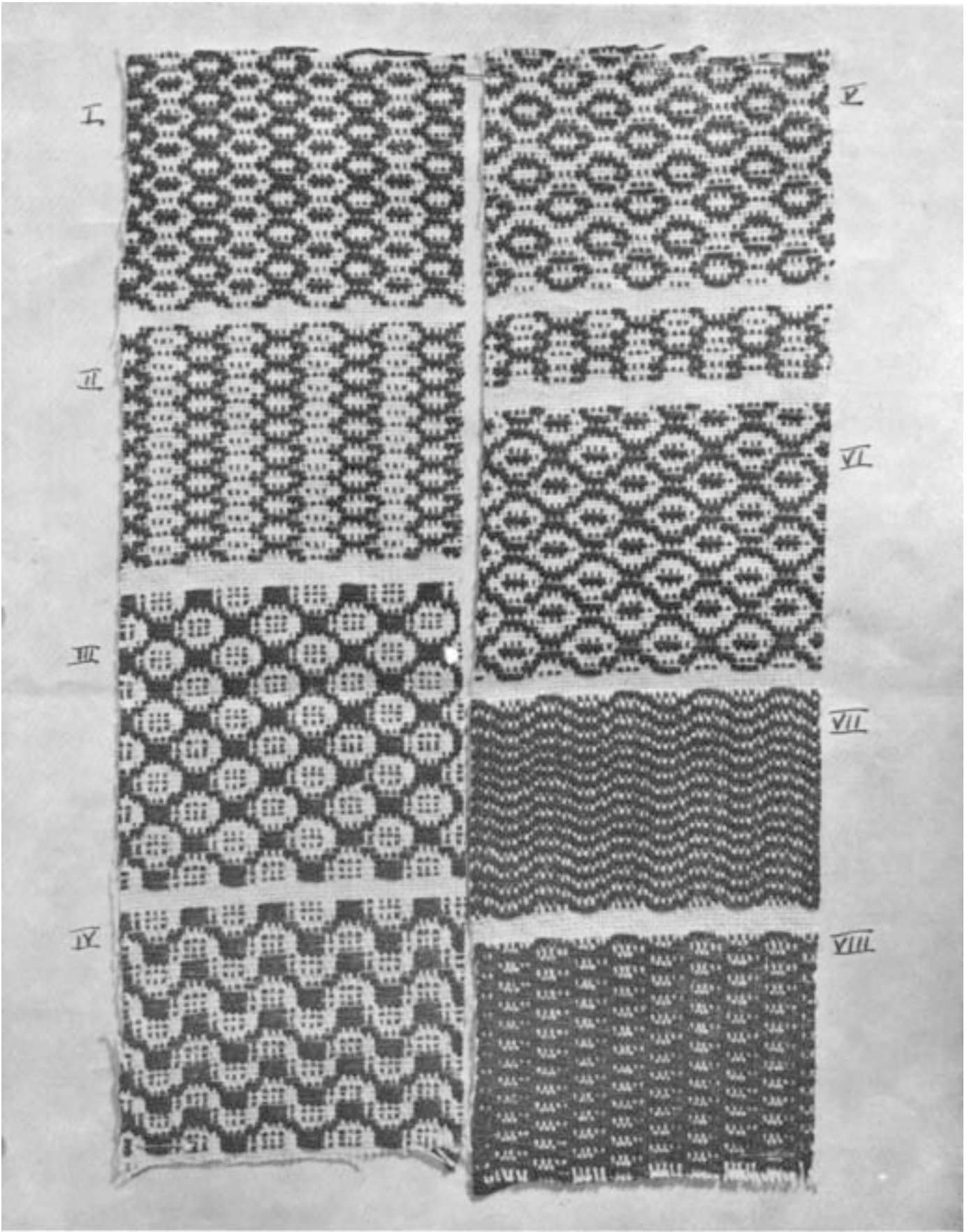


Plate II-a

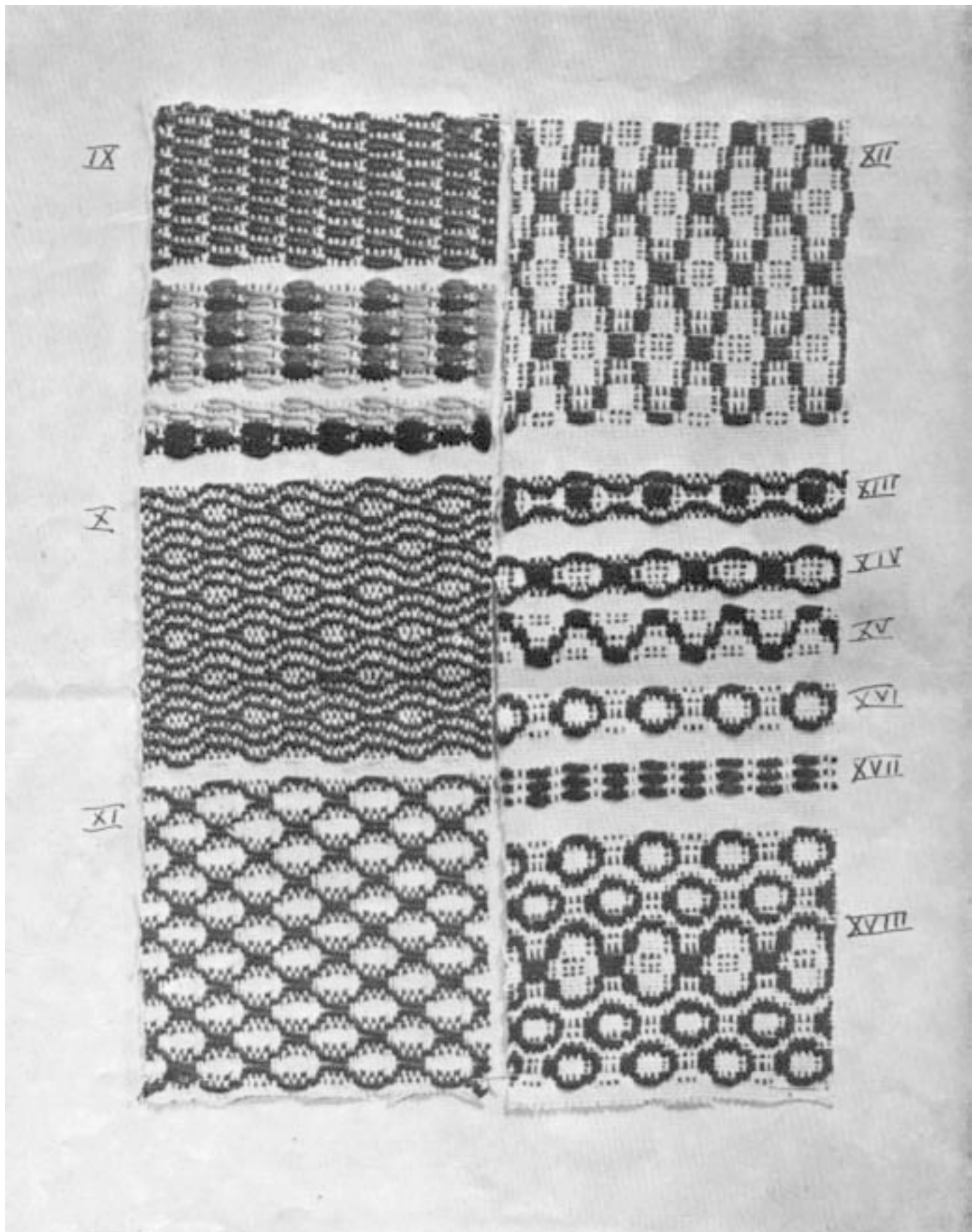


Plate II-b

A FINNISH DIAMOND. CONTINUED.

THREADING.	← REPEAT →	HARNESSES COMBINATIONS													
		x	x			x				x	x			x	
		x				x	x			x				x	x
		x	x	x	x					x	x	x			
		x	x	x						x	x	x			
	24													4	4
	TABBY	1												4	4
	IV NO TABBY													4	4
	REPEAT													4	
	X NO TABBY														3
	REPEAT														
	XIV NO TABBY														
	USE TABBY													4	
	NO TABBY														
	REPEAT														
	XV USE TABBY													2	2
	REPEAT														
	XVI USE TABBY		y					x						3	
	REPEAT														
	XVII NO TABBY		x	x											
	REPEAT														
	XVIII USE TABBY													3	
	REPEAT														
	REPEAT													3	

Plate II-b

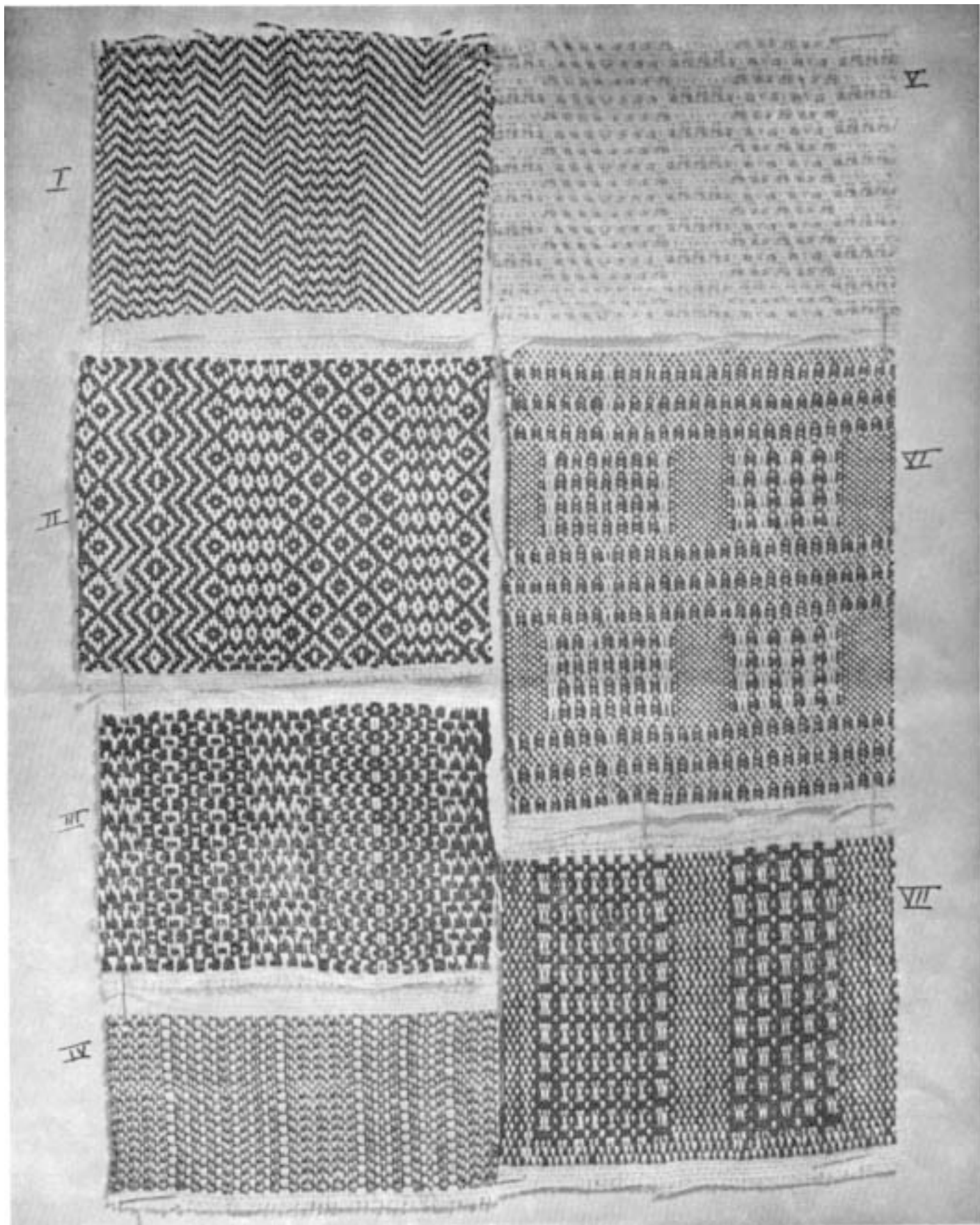


Plate III

PLATE III

SWISS TWILL DESIGN.

HELEN SCHUBINGER.

