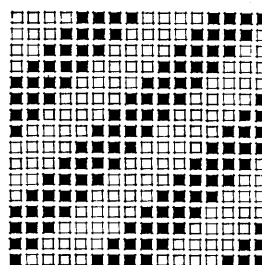

 NOVELTIES FROM FOREIGN SOURCES.

 Woolen Cheviot Suiting.



Complete Weave.

Repeat 8×8 .

Warp:—2,240 ends, 8 or 16 harness straight draw, all 4 run woolen yarn.

Reed:— $8 \times 4 = 70$ inches wide.

Dress:—

12 ends, gray.
2 ends, black.
1 end, crimson.
1 end, black.

16 ends repeat of dressing.

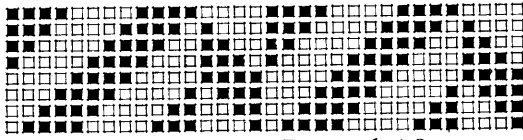
Filling:—32 picks per inch, all 4 run woolen yarn, arranged thus:

12 picks, black.
2 picks, gray.
1 pick, blue.
1 pick, gray.

16 picks repeat of pattern.

Finish:—Woolen cheviot finish; scour well, clip on shear; 56 inches finished width.

Worsted Trousering.



Complete Weave. Repeat 16 X 8.

Warp:—3,328 ends, 16 harness straight draw, all 2/20's worsted yarn.

Reed:—13 X 4 = 64 inches wide.

Dress:—

- 4 ends, black.
- 4 ends, dark blue.
- 4 ends, black.
- 1 end, coffee brown.
- 2 ends, dark blue.
- 1 end, coffee brown.

16 ends repeat of dressing.

Filling:—50 picks per inch, all 2/20's black worsted.

Finish:—Worsted finish; 56 inches finished width.

Woolen Cheviot Suiting.



Complete Weave.

Repeat 4 X 4.

Warp:—1,740 ends, all 2 ply, 6 run twist, 8 harness straight draw.

Reed:—13½ X 2 = 64 inches wide.

Dress:—

- 3 ends, dark green..... = 3 ends
- 1 end, medium gray..... } X 11 = 22 ends
- 1 end, black.....
- 1 end, medium gray..... = 1 end
- 3 ends, black..... = 3 ends
- 1 end, medium gray..... } X 11 = 22 ends
- 1 end, black.....
- 1 end, medium gray..... = 1 end

Repeat of pattern: 52 ends

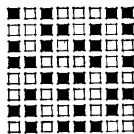
Filling:—28 picks per inch, arranged thus:

- 3 picks, 2 ply, 6 run black and green twist.
- 63 picks, 2 ply, 6 run all black twist.

66 picks in repeat of pattern.

Finish:—Woolen cheviot finish; scour well, clip on shear; 56 inches wide.

Worsted Suiting.



Complete Weave.

Repeat 8 X 8.

Warp:—4,680 ends, all 2/48's worsted, 16-harness, straight draw.

Reed:—18½ X 4 = 64 inches wide.

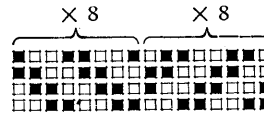
Dress:—

- 1 end, white
- 3 ends, black.
- 4 ends repeat of pattern.

Filling:—70 picks per inch, all 2/48's worsted, black.

Finish:—Worsted finish; 56 inches wide.

Fancy Woolen Cheviot Trousering.



Complete Weave.

Repeat 128 X 4.

Warp:—2,272 ends, 16-harness fancy draw.

Reed:—9 X 4 = 63 inches wide.

Dress:—

- 1 end, 3¼ run black..... } X 10 = 20 ends
- 1 end, 2/6½ run white..... = 1 end
- 1 end, 2/6½ run blue..... = 1 end
- 1 end, 2/6½ run white..... = 1 end
- 1 end, 3¼ run black..... = 1 end
- 1 end, 2/6½ run white..... = 1 end
- 1 end, 2/6½ run yellow..... = 1 end
- 1 end, 2/6½ run white..... = 1 end
- 1 end, 3¼ run black..... = 1 end
- 1 end, 2/6½ run white..... = 1 end
- 1 end, 2/6½ run blue..... = 1 end
- 1 end, 2/6½ run white..... } X 11 = 22 ends
- 1 end, 3¼ run black..... = 1 end
- 1 end, 2/6½ run white..... = 1 end
- 1 end, 2/6½ run red..... = 1 end
- 1 end, 2/6½ run white..... } X 3 = 6 ends
- 1 end, 3¼ run black..... = 1 end
- 1 end, 2/6½ run white..... = 1 end
- 1 end, 2/6½ run red..... = 1 end
- 1 end, 2/6½ run white..... = 1 end
- 1 end, 3¼ run black..... = 1 end
- 1 end, 2/6½ run white..... = 1 end

Repeat of pattern: 64 ends

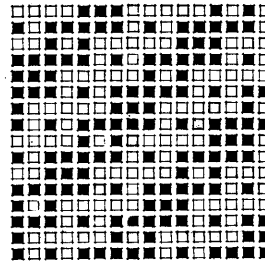
Filling:—40 picks per inch, arranged thus:

- 1 pick, 2/6½ run black and white twist.
- 1 pick, 3¼ run black.

2 picks in repeat of pattern.

Finish:—Woolen cheviot finish; scour well, clip on shear, 56 inches wide.

Worsted Cheviot Suiting.



Complete Weave.

Repeat 16 X 16.

Warp:—5,800 ends.

Reed:—15 X 6 = 64½ inches wide in loom.

Dress:—

- 2 ends, 2/40's cheviot, black, twisted with 2/80's mercerized cotton, white..... = 2 ends.
- 6 ends, 2/40's cheviot worsted, black..... = 6 ends.
- 2 ends, 2/40's cheviot, black, twisted with 2/80's mercerized cotton, white..... = 2 ends.
- 34 ends, 2/40's cheviot worsted, black..... = 34 ends.
- 2 ends, 2/52's worsted, black and blue twist..... = 2 ends.
- 6 ends, 2/40's cheviot worsted, black..... = 6 ends.
- 2 ends, 2/52's worsted, black and green twist..... = 2 ends.
- 34 ends, 2/40's cheviot worsted, black..... = 34 ends.

Repeat of pattern: 88 ends.

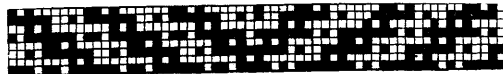
Filling:—100 picks per inch, arranged thus:—

- 2 picks, 2/52's worsted, black and blue twist.
- 110 picks, single 20's cheviot, black.

112 picks, repeat of pattern.

Finish:—Cheviot worsted finish.

Fancy Woolen Overcoating.



Complete Weave. Repeat 60 × 8.

Warp:—5,250 ends, 10 harness fancy draw.

Reed:—15 × 5 = 70 inches wide.

Dress:—

- | | | |
|--|---|-----------------|
| 1 end, 4 run black and 64's worsted, white twist | } | × 4 = 20 ends |
| 1 end, 2/52's worsted, black and white twist | | |
| 1 end, 4 run white and 64's worsted, white twist | } | × 8 = 40 ends |
| 2 ends, 4 run black | | |
| 1 end, 4 run black and 64's worsted, white twist | } | × 2 = 10 ends |
| 1 end, 4 run black | | |
| 2 ends, 4 run black | } | × 22 = 110 ends |
| 1 end, 4 run black and 64's worsted, white twist | | |
| 1 end, 4 run black | | |
| 1 end, 4 run black | | |
| 1 end, 4 run black and 64's worsted, white twist | | |
| 1 end, 4 run black | | |
| 2 ends, 4 run black | | |

Repeat of pattern: 180 ends

Filling:—63 picks per inch, arranged thus:—

- | | | |
|---|---|------------------|
| 1 pick, 4 run black | } | × 4 = 16 picks |
| 1 pick, 2/52's worsted, black and white twist | | |
| 2 picks, 4 run black | } | × 28 = 112 picks |
| 40 picks, 4 run black | | |
| 1 pick, 4 run black | | |
| 1 pick, 2/52's worsted, black and white twist | | |
| 2 picks, 4 run black | | |

Repeat of pattern: 168 picks

Finish:—Scour well, full slightly, clip on shear; 56 inches finished width.

Woolen Cheviot Suiting.



Complete Weave.

Repeat 4 × 4.

Warp:—1,875 ends.

Reed:—15 × 2 = 62 1/2 inches wide in loom.

Dress:—

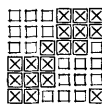
- | | |
|---|-----------|
| 3 ends, 2/16's worsted cheviot, black and white twist | = 3 ends. |
| 1 end, 2/16's worsted cheviot, black twist | = 1 end. |
| 1 end, 2/16's worsted cheviot, brown and yellow twist | = 1 end. |
| 1 end, 2/16's worsted cheviot, blue twist | = 1 end. |
| 1 end, 2/16's worsted cheviot, brown and yellow twist | = 1 end. |
| 1 end, 2/16's worsted cheviot, black twist | = 1 end. |
| 1 end, 2/16's worsted cheviot, black and white twist | = 1 end. |
| 1 end, 2/16's worsted cheviot, black twist | = 1 end. |
| 1 end, 2/16's worsted cheviot, white and green twist | = 1 end. |
| 1 end, 2/16's worsted cheviot, black twist | = 1 end. |
| 1 end, 2/16's worsted cheviot, brown and yellow twist | = 1 end. |
| 1 end, 2/16's worsted cheviot, black twist | = 1 end. |
| 1 end, 2/16's worsted cheviot, black and white twist | = 1 end. |
| 1 end, 2/16's worsted cheviot, black twist | = 1 end. |
| 1 end, 2/16's worsted cheviot, white and green twist | = 1 end. |
| 1 end, 2/16's worsted cheviot, black | = 1 end. |
| 1 end, 2/16's worsted cheviot, black and white twist | = 1 end. |
| 1 end, 2/16's worsted cheviot, black | = 1 end. |
| 1 end, 2/16's worsted cheviot, white and green twist | = 1 end. |
| 1 end, 2/16's worsted cheviot, blue twist | = 1 end. |

Repeat of pattern: 32 ends.

Filling:—37 picks per inch, 3 1/2 run woolen yarn, dark blue.

Finish:—Worsted finish, scour well, shear clear, 56 inches wide.

Fancy Cassimere.



Complete Weave.

Repeat 6 × 6.

Warp:—2,430 ends.

Reed:—12 1/2 × 3 = 65 inches wide in loom.

Dress:—

- | | |
|---------------------------------|-----------|
| 1 end, 2-ply 6-run, blue twist | = 1 end. |
| 2 ends, 3-run, olive | = 2 ends. |
| 1 end, 2-ply 6-run, gray twist | = 1 end. |
| 2 ends, 3-run, olive | = 2 ends. |
| 1 end, 2-ply 6-run, white twist | = 1 end. |
| 2 ends, 3-run, olive | = 2 ends. |
| 1 end, 2-ply 6-run, gray twist | = 1 end. |
| 2 ends, 3-run, olive | = 2 ends. |
| 1 end, 2-ply 6-run, white twist | = 1 end. |
| 2 ends, 3-run, olive | = 2 ends. |
| 1 end, 2-ply 6-run, gray twist | = 1 end. |
| 2 ends, 3-run, olive | = 2 ends. |
| 1 end, 3-run, brown | = 1 end. |
| 2 ends, 3-run, olive | = 2 ends. |
| 1 end, 2-ply 6-run, gray twist | = 1 end. |
| 2 ends, 3-run, olive | = 2 ends. |
| 1 end, 2-ply 6-run, white twist | = 1 end. |
| 2 ends, 3-run, olive | = 2 ends. |
| 1 end, 2-ply 6-run, gray twist | = 1 end. |
| 2 ends, 3-run, olive | = 2 ends. |
| 1 end, 2-ply 6-run, white twist | = 1 end. |
| 2 ends, 3-run, olive | = 2 ends. |
| 1 end, 2-ply 6-run, gray twist | = 1 end. |
| 2 ends, 3-run, olive | = 2 ends. |

Repeat of pattern: 72 ends.

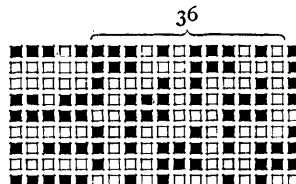
Filling:—42 picks per inch, arranged thus:—

- | | |
|--|------------|
| 1 pick, 2-ply 6-run twist, blue | = 1 pick. |
| 2 picks, 3-run, black | = 2 picks. |
| 1 pick, 2-ply 6-run, black and pearl twist | = 1 pick. |
| 2 picks, 3-run, black | = 2 picks. |

Repeat of pattern: 96 picks.

Finish:—Cheviot finish, scour well, shear clear, 56 inches wide.

Worsted Trousering.



Complete Weave.

Repeat 42 × 9.

Warp:—7,672 ends.

Reed:—20 { 1 dent @ 5 = 5 ends }
 { 5 dents @ 6 = 30 ends } = 64 inches wide.
 { 1 dent @ 7 = 7 ends }

Dress:—

- | | |
|---|------------|
| 5 ends, 2/64's worsted, black | = 5 ends. |
| 1 end, 2/64's worsted, black, twisted with 2/80's cotton, white | = 1 end. |
| 1 end, 2/64's worsted, black and white twist | = 1 end. |
| 16 ends, 2/64's worsted, black | = 16 ends. |
| 2 ends, 2/64's worsted, black and blue-green twist | = 2 ends. |
| 15 ends, 2/64's worsted, black | = 15 ends. |
| 1 end, 2/64's worsted, black and white twist | = 1 end. |
| 1 end, 2/64's worsted, black, twisted with 2/80's cotton, white | = 1 end. |

Repeat of pattern: 42 ends

Filling:—87 picks per inch, arranged thus:—

- | |
|---------------------------------|
| 2 picks, 2/64's worsted, black. |
| 1 pick, 3/4 run woolen yarn. |
| 3 picks, repeat of pattern. |

Finish:—Worsted finish, scour well, shear clear, 56 inches wide.