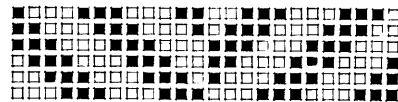


NOVELTIES FROM FOREIGN SOURCES.

Worsted Melton Suiting.



Complete Weave. Repeat 24 X 6.

Warp :—4,400 ends, 12 harness fancy draw.

Reed :—11 X 6 = 66½ inches wide.

Dress :—

1 end, 2/40's worsted, white.
 1 end, 2/40's worsted, red and white twist.
 1 end, 2/40's worsted, black and white twist.
 3 ends, 2/36's worsted, black.

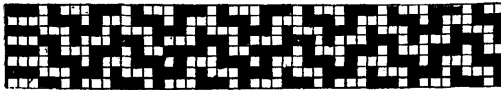
- 1 end, 2/40's worsted, black and white twist.
- 1 end, 2/36's worsted, black.
- 1 end, 2 fold, 2/72's worsted, dark red.
- 1 end, 2/36's worsted, black.
- 1 end, 2/40's worsted, black and white twist.
- 1 end, 2/36's worsted, black.
- 1 end, 2 fold, 2/72's worsted, dark red.
- 1 end, 2/36's worsted, black.
- 1 end, 2/40's worsted, white.
- 3 ends, 2/36's worsted, black.

18 ends in repeat of pattern.

Filling:—64 picks per inch, all 2/36's worsted, black.

Finish:—Melton finish; scour well, full, shear clear; 56 inches wide.

Worsted Trousering.



Complete Weave. Repeat 47 X 4.

Warp:—5,640 ends, 11-harness fancy draw.

Reed:—14½ { 1 dent @ 5 ends } 65 inches wide.
 { 7 dents @ 6 ends }

Dress:—

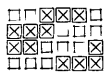
- 3 ends, 2/40's worsted, black = 3 ends
- 2 ends, 2/64's worsted, pearl and drab..... = 2 ends
- 2 ends, 2/40's worsted, black.....
- 2 ends, 2/40's worsted, drab..... } X 3 = 12 ends
- 10 ends, 2/40's worsted, black..... = 10 ends
- 2 ends, 2/64's worsted, pearl and drab..... = 2 ends
- 2 ends, 2/40's worsted, black.....
- 2 ends, 2/40's worsted, drab..... } X 3 = 12 ends
- 6 ends, 2/40's worsted, black..... = 6 ends

Repeat of pattern: 47 ends

Filling:—62 picks per inch, all 2/36's worsted, plain black.

Finish:—Worsted finish; scour well and shear clear; 56 inches wide.

Worsted Suiting.



Complete Weave.

Repeat 6 X 4.

Warp:—3,812 ends.

Reed:—20 X 3 = 63½ inches wide in loom.

Dress:—

- 2 ends, A } X 2 = 6 ends, }
- 1 end, B }
- 2 ends, A } X 3 = 18 ends, } X 3 = 72 ends.
- 1 end, B }
- 2 ends, C }
- 1 end, B }
- 2 ends, A } X 3 = 9 ends.
- 1 end, B }
- 2 ends, D = 2 ends.
- 1 end, B = 1 end.
- 2 ends, A = 2 ends.
- 1 end, B = 1 end.
- 2 ends, C = 2 ends.
- 1 end, B = 1 end.
- 2 ends, A = 2 ends.
- 1 end, B = 1 end.
- 2 ends, E = 2 ends.
- 1 end, B = 1 end.

Repeat of pattern: 96 ends.

Filling:—42 picks per inch, arranged thus:—

- 1 pick, A, 2-fold } X 2 = 4 picks }
- 1 pick, B }
- 1 pick, A, 2-fold } X 3 = 12 picks }
- 1 pick, B }
- 1 pick, C } X 5 = 80 picks.
- 1 pick, B }
- 1 pick, A, 2-fold } X 3 = 6 picks.
- 1 pick, B }

- 1 pick, D, 2-fold = 1 pick.
- 1 pick, B = 1 pick.
- 1 pick, A, 2-fold = 1 pick.
- 1 pick, B = 1 pick.
- 1 pick, C, 2-fold = 1 pick.
- 1 pick, B = 1 pick.
- 1 pick, A = 1 pick.
- 1 pick, B = 1 pick.
- 1 pick, E, 2-fold = 1 pick.
- 1 pick, B = 1 pick.

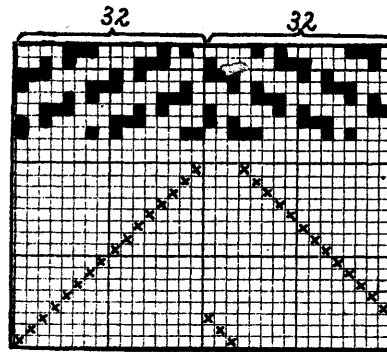
Repeat of pattern: 96 picks.

Description of Yarn:—

- A = 2/50's worsted, black and white twist, twisted over with 2/50's worsted, slate.
- B = 2/22's worsted, black.
- C = 2/30's worsted, gray.
- D = 2/52's worsted, black and blue-green twist.
- E = 2/52's worsted, black and orange twist.

Finish:—Worsted finish, scour well, shear clear, 56 inches wide.

Worsted Suiting.



Complete Weave. Repeat 64 X 8.

Warp:—7,014 ends, 16 harness straight draw.

Reed:—13½ X 8 = 65 inches wide in loom.

Dress:—

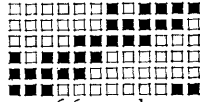
- 4 ends, 2/36's worsted, black = 4
- 1 end, 36's worsted, black and 40's } X 2 = 4 } X 6 = 48 ends.
- 1 end, 2/36's worsted, black and gray } X 2 = 4 } X 6 = 48 ends.
- 2 ends, 2/52's worsted, black and red twist = 2 ends.
- 2 ends, 2/36's worsted, black = 2 ends.
- 1 end, 36's worsted, black and 40's } X 2 = 4 } X 5 = 40 ends.
- 1 end, 2/36's worsted, black and gray } X 2 = 4 } X 5 = 40 ends.
- 4 ends, 2/36's worsted, black = 4
- 1 end, 36's worsted, black and 40's } X 2 = 4 } X 2 = 4 ends.
- 1 end, 2/36's worsted, black and gray twist } X 2 = 4 } X 2 = 4 ends.
- 2 ends, 2/36's worsted, black } X 12 = 48 ends.
- 1 end, 36's worsted, black and 40's } X 12 = 48 ends.
- 1 end, 2/36's worsted, black and gray twist } X 12 = 48 ends.
- 2 ends, 2/52's worsted, black and blue twist = 2 ends.
- 1 end, 36's worsted, black and 40's } X 11 = 44 ends.
- 1 end, 2/36's worsted, black and gray twist } X 11 = 44 ends.
- 2 ends, 2/36's worsted, black } X 11 = 44 ends.
- 1 end, 36's worsted, black and 40's worsted pearl } X 11 = 44 ends.
- 1 end, 36's worsted, black and 40's worsted pearl } X 11 = 44 ends.
- 1 end, 2/36's worsted, black and gray twist = 1 end.
- 1 end, 2/36's worsted, black and gray twist = 1 end.

Repeat of pattern: 192 ends.

Filling:—57 picks per inch, all plain 2/36's worsted black.

Finish:—Worsted finish, scour well, shear clear, 56 inches wide.

Worsted Suiting.



Complete Weave.
Repeat 12 X 6.

Warp:—6,670 ends.
Reed:—17 X 6 = 66 inches wide in loom.
Dress:—

- 2 ends, 2/52's worsted, black, twisted with 2/80's cotton, slate = 2 ends.
- 2 ends, 2/45's worsted, black and blue twist = 2 ends.
- 2 ends, 2/32's worsted, green = 2 ends.
- 6 ends, 2/32's worsted, black = 6 ends.
- 2 ends, 2/52's worsted, black, twisted with 2/80's cotton, slate = 2 ends.
- 2 ends, 2/45's worsted, black and blue-green twist = 2 ends.
- 8 ends, 2/32's worsted, black = 8 ends.
- 2 ends, 2/52's worsted, black, twisted with 2/80's cotton, slate = 2 ends.
- 2 ends, 2/45's worsted, black and blue twist = 2 ends.
- 2 ends, 2/32's worsted, violet = 2 ends.
- 6 ends, 2/32's worsted, black = 6 ends.
- 2 ends, 2/52's worsted, black, twisted with 2/80's cotton, slate = 6 ends.
- 2 ends, 2/45's worsted, black and blue-green twist = 2 ends.
- 8 ends, 2/32's worsted, black = 8 ends.
- 2 ends, 2/52's worsted, black, twisted with 2/80's cotton, slate = 2 ends.
- 2 ends, 2/45's worsted, black and blue twist = 2 ends.
- 8 ends, 2/32's worsted, black = 8 ends.
- 2 ends, 2/52's worsted, black, twisted with 2/80's cotton, slate = 2 ends.
- 2 ends, 2/45's worsted, black and blue-green twist = 2 ends.
- 8 ends, 2/32's worsted, black = 8 ends.

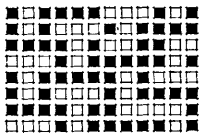
Repeat of pattern: 240 ends.

- Filling:*—57 picks per inch, arranged thus:—
- 4 picks, 2/32's worsted, black = 4 picks.
 - 1 pick, 2/52's worsted, black, twisted with 2/80's cotton, slate = 1 pick.
 - 1 pick, 2/45's worsted, black and blue-green twist ... = 1 pick.
 - 1 pick, 2/32's worsted, green = 1 pick.
 - 3 picks, 2/32's worsted, black = 3 picks.
 - 1 pick, 2/52's worsted, black, twisted with 2/80's cotton, slate = 1 pick.
 - 1 pick, 2/45's worsted, black and blue-green twist ... = 1 pick.
 - 4 picks, 2/32's worsted, black = 4 picks.
 - 1 pick, 2/52's worsted, black, twisted with 2/80's cotton, slate = 1 pick.
 - 1 pick, 2/45's worsted, black and blue-green twist ... = 1 pick.
 - 1 pick, 2/32's worsted, violet = 1 pick.
 - 3 picks, 2/32's worsted, black = 3 picks.
 - 1 pick, 2/52's worsted, black, twisted with 2/80's cotton, slate = 1 pick.
 - 1 pick, 2/45's worsted, black and blue-green twist ... = 1 pick.
 - 4 picks, 2/32's worsted, black = 4 picks.
 - 1 pick, 2/52's worsted, black, twisted with 2/80's cotton, slate = 1 pick.
 - 1 pick, 2/45's worsted, black and blue-green twist ... = 1 pick.

Repeat of pattern: 138 picks.

Finish:—Worsted finish, scour well, shear clear, 50 inches wide.

Fancy Worsted Trousering.



Complete Weave.
Repeat 12 X 8.

Warp:—5,120 ends, 12-harness straight draw, all 2/36's worsted.
Reed:—20 X 4 = 64 inches wide.
Dress:—

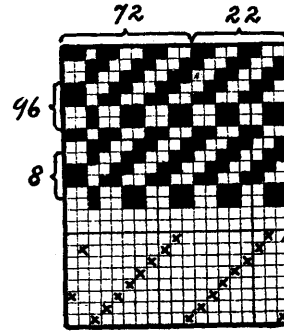
- 2 ends, blue gray.
 - 2 ends, white.
 - 2 ends, blue gray.
 - 6 ends, black.
- 12 ends, repeat of dressing.

Filling:—72 picks per inch, all 2/36's worsted, arranged thus:

- 1 pick, blue gray.
 - 1 pick, black.
 - 1 pick, white.
 - 1 pick, black.
- 4 picks, repeat of pattern.

Finish:—Worsted finish, 56 inches wide.

Melton Suitings.



Complete Weave. Repeat 94 X 110.

Warp:—2,550 ends, 8 harness fancy draw.

- Reed:*—
- 1 dent @ 2 ends = 2 ends
 - 3 dents @ 3 ends = 9 ends
 - 1 dent @ 2 ends = 2 ends
 - 27 dents @ 3 ends = 81 ends
- 32 dents to 94 ends = 67 inches wide in loom.

- Dress:*—
- 2 ends, 2/24's worsted, black and green, twisted with 5 run woolen yarn, black = 2 ends.
 - 9 ends, 2-ply 6 run, woolen yarn, dark blue = 9 ends.
 - 2 ends, 2/24's worsted, black and green, twisted with 5 run woolen yarn, black = 2 ends.
 - 13 ends, 2-ply 6 run, woolen yarn, dark blue = 13 ends.
 - 1 end, single 32's worsted, black, twisted with 2/80's cotton, white = 1 end.
 - 1 end, 2-ply 6 run, woolen yarn, dark blue = 1 end.
 - 1 end, single 32's worsted, black, twisted with 2/80's cotton, white (2 fold) = 1 end.
 - 45 ends, 2-ply 6 run, woolen yarn, dark blue = 45 ends.
 - 1 end, single 32's worsted, black, twisted with 2/80's cotton, white = 1 end.
 - 1 end, 2-ply 6 run, woolen yarn, dark blue = 1 end.
 - 1 end, single 32's worsted, black, twisted with 2/80's cotton, white (2 fold) = 1 end.
 - 2 ends, 2-ply 6 run, woolen yarn, dark blue = 2 ends.
 - 1 end, 2/52's worsted, black and red twist (2 fold) ... = 1 end.
 - 3 ends, 2-ply 6 run, woolen yarn, dark blue = 3 ends.
 - 1 end, 2/52's worsted, black and red twist (2 fold) ... = 1 end.
 - 10 ends, 2-ply 6 run, woolen yarn, dark blue = 10 ends.

Repeat of pattern: 94 ends.

- Filling:*—45 picks per inch, arranged thus:—
- 2 picks, 2/24's worsted, black and green, twisted with 5 run woolen yarn, black = 2 picks.
 - 9 picks, 2-ply 6 run, woolen yarn, dark blue = 9 picks.
 - 2 picks, 2/24's worsted, black and green, twisted with 5 run woolen yarn, black = 2 picks.
 - 82 picks, 2-ply 6 run, woolen yarn, dark blue = 82 picks.
 - 1 pick, 2/52's worsted, black and red twist (2 fold) ... = 1 pick.
 - 3 picks, 2-ply 6 run, woolen yarn, dark blue = 3 picks.
 - 1 pick, 2/52's worsted, black and red twist (2 fold) ... = 1 pick.
 - 10 picks, 2-ply 6 run, woolen yarn, dark blue = 10 picks.

Repeat of pattern: 110 picks.

Finish:—Melton finish, scour, full slightly, clip on shear, press, steam, press and sponge, 56 inches wide.

Woolen Cheviot Trousering.



Complete Weave.

Repeat 4 X 4.

Warp:—2,048 ends, 8 harness straight draw.

Reed:—16 X 2 = 64 inches wide in loom.

Dress:—

- 1 end, 2 ply, 6 run black. = 1 end
- 2 ends, 2 fold, 2/40's worsted, black and white twist. = 2 ends
- 1 end, 2 ply, 6 run black. = 1 end
- 1 end, 2 ply, 6 run white. } X 3 = 9 ends
- 2 ends, 2 ply, 6 run black. }
- 1 end, 2 ply, 6 run white. = 1 end

Repeat of pattern: 14 ends

Filling:—35 picks per inch arranged thus:—

- 1 pick, 2 ply, 6 run light grey.
- 3 picks, 2 ply, 4 run black.

4 picks in repeat of pattern.

Finish:—Woolen cheviot finish; full slightly, shear clear on face; 56 inches finished width.

Worsted Cheviot Trousering.



Complete Weave. Repeat 24 X 4.

Warp:—2,200 ends, 8 or 12 harness fancy draw.

Reed:—8½ X 4 = 64¾ inches wide in loom.

Dress:—

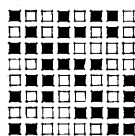
- 1 end, 2/40's worsted, black and white twist.
- 1 end, 2/24's worsted, black.
- 1 end, 2/24's worsted, black and dark red twist.
- 1 end, 2/24's worsted, black.
- 1 end, 2/24's worsted, black and dark red twist.
- 1 end, 2/24's worsted, black.
- 1 end, 2/40's worsted, black and white twist.
- 1 end, 2/24's worsted, black.
- 1 end, 2/24's worsted, black and dark red twist.
- 1 end, 2/24's worsted, black.

10 ends in repeat of pattern.

Filling:—35 picks per inch, all 2/24's black worsted.

Finish:—Cheviot finish; scour well and full slightly, clip on shear; 56 inches wide.

Woolen Cheviot Suiting.



Complete Weave.

Repeat 8 X 8.

Warp:—2,500 ends, 8-harness straight draw.

Reed:—9½ X 4 = 66 inches wide.

Dress:—

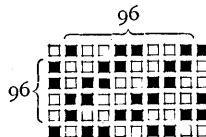
- 3 ends, 2 ply, 5½ run black.
- 1 end, 2 fold, 5 run black and 6 run white twist.
- 3 ends, 2 ply, 5½ run black.
- 1 end, 2 ply, 5½ run white.

8 ends in repeat of pattern.

Filling:—42 picks per inch, all 3 run black.

Finish:—Woolen cheviot finish, full slightly, shear clear on face; 56 inches wide.

Worsted Melton Piece Dye.



Complete Weave.

Repeat 98 X 98.

Warp:—3,570 ends.

- Reed:—15 { 7 dents @ 4 = 28 ends
- { 14 dents @ 3 = 42 ends } = 65 inches wide.
- { 7 dents @ 4 = 28 ends

28 dents to 98 ends

Dress:—

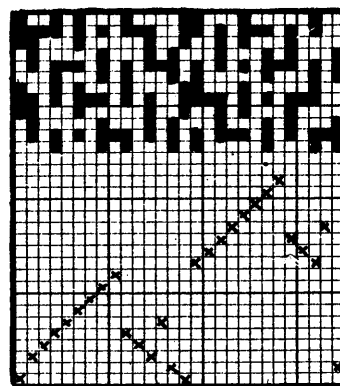
- 25 ends, 2/18's worsted, in the gray. = 25 ends.
- 1 end, 2/40's worsted, in the gray } X 16 = 48 ends.
- 1 end, 2/10's worsted, in the gray }
- 1 end, 2/40's worsted, in the gray } = 25 ends.
- 25 ends, 2/18's worsted, in the gray.

Repeat of pattern: 98 ends.

Filling:—50 picks per inch, same arrangement as to counts of yarns used in warp.

Finish:—Worsted finish, scour, full, dye, scour again, clip on shear, press, steam, press and sponge, 56 inches wide.

Worsted Trousering.



Complete Weave.

Repeat 180 X 8.

Warp:—9,620 ends, 12 harness fancy draw.

- Reed:—26 X { 25 dents @ 6 ends. = 150 ends.
- { 1 dent @ 3 } X 3. = 27 ends.
- { 1 dent @ 6 } X 3. = 3 ends.
- { 1 dent @ 3. = 3 ends.

32 dents to 180 ends.

Dress:—

- 1 end, 2/52's worsted, black. } X 16 = 48 ends.
- 1 end, 2/52's worsted, dark blue mix. }
- 1 end, 2/52's worsted, black. }
- 1 end, 2/52's worsted, black twisted over with } X 2 = 6 ends.
- single 60's cotton, white. }
- 1 end, 2/52's worsted, dark blue mix. }
- 1 end, 2/52's worsted, black and pearl twist. }
- 1 end, 2/52's worsted, black. } X 16 = 48 ends.
- 1 end, 2/52's worsted, dark blue mix. }
- 1 end, 2/52's worsted, black. }
- 1 end, 2/52's worsted, black and pearl } X 2 = 24 ends.
- twist. = 1 end
- 1 end, 2/52's worsted, dark blue mix. = 1 end
- 1 end, 2/52's worsted, black and pearl } X 2 = 24 ends.
- twist. = 1 end
- 1 end, 2/52's worsted, black. }
- 1 end, 2/52's worsted, dark blue } X 3 = 9 ends
- mix. }
- 1 end, 2/52's worsted, black. }
- 1 end, 2/52's worsted, black and pearl twist. = 1 end.
- 1 end, 2/52's worsted, dark blue mix. = 1 end.