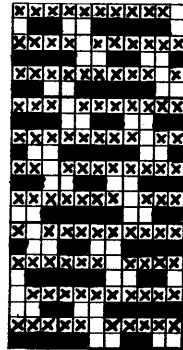


NOVELTIES FROM FOREIGN SOURCES.

Piece Dye Worsted Coating.



*Complete Weave.* Repeat 11 X 22.

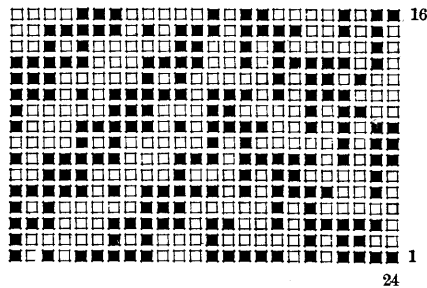
*Warp*—5280 ends, 2/48's worsted, gray, 11 or 22 harness straight draw.

*Reed*—20 X 4=66 inches wide in loom.

*Filling*—120 picks per inch, single 18's worsted gray.

*Finish*—Clear face finish, nap back, 56 inches wide.

Worsted Melton Suiting.



*Complete Weave.* Repeat 24 X 16.

*Warp*—6048 ends, 24 harness straight draw, all 2/48's worsted yarn.

*Reed*—14 X 6=72 inches wide.

*Dress*—

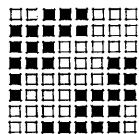
- 2 ends, black and white twist,
- 2 ends, blue,
- 18 ends, black and medium gray twist,
- 2 ends, black and white twist.

24 ends repeat of dressing.

*Filling*—95 picks per inch, all 2/48's worsted, black.

*Finish*—Worsted melton finish; scour well, full and clip on shear; 56 inches finished width.

Worsted Suiting.



*Complete Weave.*

Repeat 8 X 8.

*Warp*—5575 ends, 16 harness straight draw.

*Reed*—21 1/2 X 4=64 3/4 inches wide in loom.

**Dress—**

2 ends, 2/56's worsted black and white twisted over with single 56's worsted, black.....= 2 ends  
 4 ends, 2/40's worsted, black.....= 4 ends  
 4 ends, 2/40's worsted, black and gray.....= 4 ends  
 6 ends, 2/40 worsted, black.....= 6 ends

Repeat of pattern: 16 ends

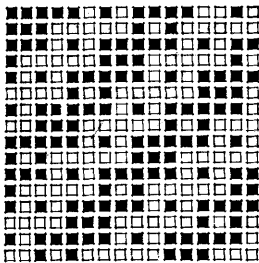
**Filling—**85 picks per inch, arranged thus :

2 picks, 2/56's worsted, black and white, twisted over with single 56's worsted, black.....= 2 picks  
 4 picks, 5 run woolen yarn, black.....= 4 picks  
 4 picks, 2/40's worsted, black and gray.....= 4 picks  
 6 picks, 5 run woolen yarn, black.....= 6 picks

Repeat of pattern: 16 picks

**Finish:**—Worsted finish, 56 inches wide.

**Worsted Suiting.**



*Complete Weave.*

Repeat 16X16.

**Warp—**7565 ends, 16 harness straight draw.

**Reed—**14½ X 8=65 inches wide in loom.

**Dress—**

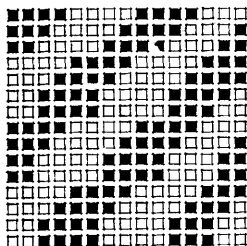
1 end, 2/52's worsted, black, twisted over with silk white.....= 1 end  
 1 end, 2/52's worsted, black and white, twisted over with single 52's worsted, black.....= 1 end  
 6 ends, 2/52's worsted, dark gray.....= 6 ends  
 1 end, 2/52's worsted, black, twisted over with silk white.....= 1 end  
 1 end, 2/52's worsted, black and white, twisted over with single 52's worsted, black.....= 1 end  
 2 ends, 2/52's worsted, black and gray..... } X 16= 64 ends  
 2 ends, 2/52's worsted, dark gray..... }  
 2 ends, 2/52's worsted, black and gray..... } X 2=8  
 2 ends, 2/52's worsted, black and gray..... } X 2=8 } X 3=128 ends  
 2 ends, 2/52's worsted, dark gray..... }  
 2 ends, 2/52's worsted, black and gray..... } X 13 .....= 52 ends  
 2 ends, 2/52's worsted, dark gray..... }  
 2 ends, 2/52's worsted, black and gray..... = 2 ends

256 ends

**Filling—**Same arrangement, colors and counts of yarn as used in warp.

**Finish—**Worsted finish, 56 inches wide.

**Worsted Diagonal Suiting.**



*Complete Weave.*

Repeat 15 X 15.

**Warp—**4610 ends.

**Reed—**18 X 4=64 inches wide in loom.

**Dress—**

2 ends, 2/61's worsted, black, twisted over with white silk,  
 2 ends, 2/24's worsted, black,  
 2 ends, 2/64's worsted, black and blue twist,

2 ends, 2/24's worsted, black,  
 2 ends, 2/64's worsted, black and gray twist,  
 5 ends, 2/24's worsted, black.  
 2 ends, 2/64's worsted, black, twisted over with white silk,  
 2 ends, 2/24's worsted, black,  
 2 ends, 2/64's worsted, redbrown,  
 2 ends, 2/24's worsted, black,  
 2 ends, 2/64's worsted, black and gray twist,  
 5 ends, 2/24's worsted, black.

30 ends, Repeat of pattern.

**Filling:**—70 picks, per inch, same arrangement, color and counts of yarn as used in warp.

**Finish—**Worsted finish, 56 inches wide.

**Worsted Melton.**

*Complete Weave* 7X7.

**Warp—**7200 ends 2/48's worsted, 14 or 21 harness straight draw.

**Reed—**25 X 4=72 inches wide in loom.

**Filling—**100 picks per inch, single 20's worsted.

**Finish—**Full 15 per cent. Melton finish, 56 inches finished width.

**Worsted Serge.**

*Complete Weave.* Repeat 10X10.

**Warp—**2100 ends, 2/12's worsted, 10 harness straight draw.

**Reed—**15 X 2 = 70 inches wide in loom.

**Filling—**30 picks per inch, same yarn as for warp.

**Finish—**Half rough finish, 56 inches finished width.

**Fancy Worsted Trousering.**

*Complete Weave.*

Repeat 40X10.

**Warp—**6520 ends, 20 harness fancy draw.

**Reed—**25 X 4 = 65 inches wide in loom.

**Dress—**

10 ends, 2/36's worsted, dark blue,  
 10 ends, 2/36's worsted, dark brown.  
 —  
 20 ends in repeat of pattern.

**Filling—**90 picks per inch, 2/36's worsted black.

**Finish—**Worsted finish, 56 inches finished width.

