

**The Marquess of Bristol's  
Collection at Ickworth  
Part III.  
By Leonard Willoughby**

THE Capo di Monte china at Ickworth is very quaint and valuable. It consists of a large service and a set of Cupid candlesticks. As is well known, Capo di Monte is described as soft paste,\* the original manufactory being founded in 1736 in the reign of Charles III. It is considered to be of native origin, as the art, which was kept so profound a secret in Dresden, could at that early period have scarcely had time to be introduced here, the character of its productions being also so essentially different. The King himself took great interest in it, and is said to have worked occasionally in the manufactory. The beautiful service and groups in coloured relief are of the second period, 1760; the earliest mark is a *fleur de lys* roughly painted in blue. These marks were considered to denote the ware made in Madrid, but are really Capo di Monte. The groups and services of this ware yet to be seen in Naples were manufactured at Capo di Monte, but

\* See Chaffers, "Marks and Monograms."




GROUP FROM FIREPLACE IN DRAWING-ROOM  
BY CANOVA

are of so common a description that they would not bear the expense of importation. The manufactory was abandoned in 1821. The marks of the second period—1759—are

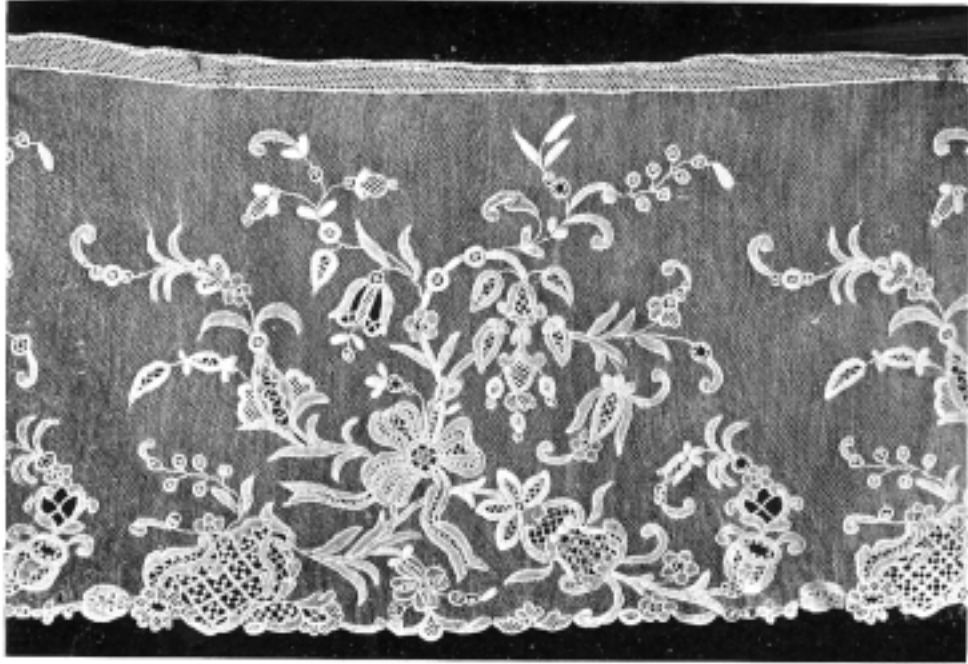


These stand for Naples, graven in red or blue. The 1780 mark is

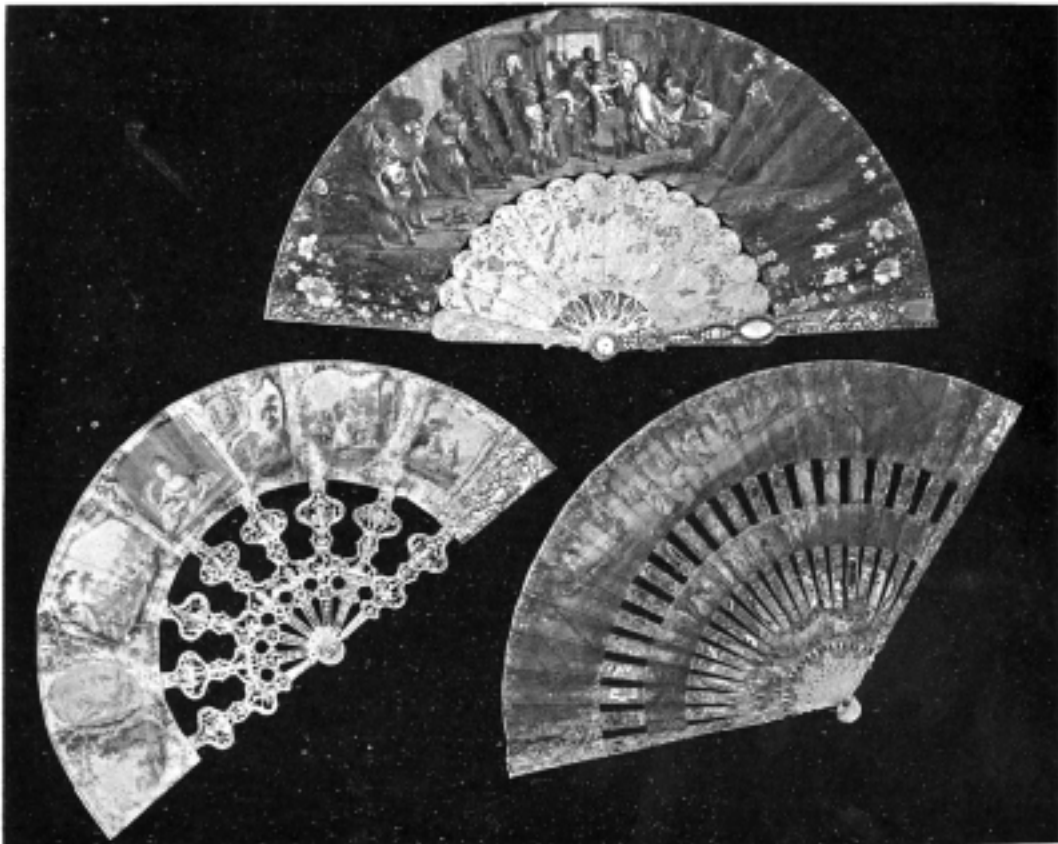
Ferdinand  Rex.

There are 180 pieces of service in the Etruscan style at Windsor, presented by the King of the two Sicilies to George III., 1787. It is of white ground with a red and black border, the subjects painted on the flat surface.

Leaving the centre building and passing eastwards down the curving corridor which connects the wing, the first room reached half way is the smoking-room. Here are several very interesting pictures by Hogarth and Zoffany. One by the former is called a



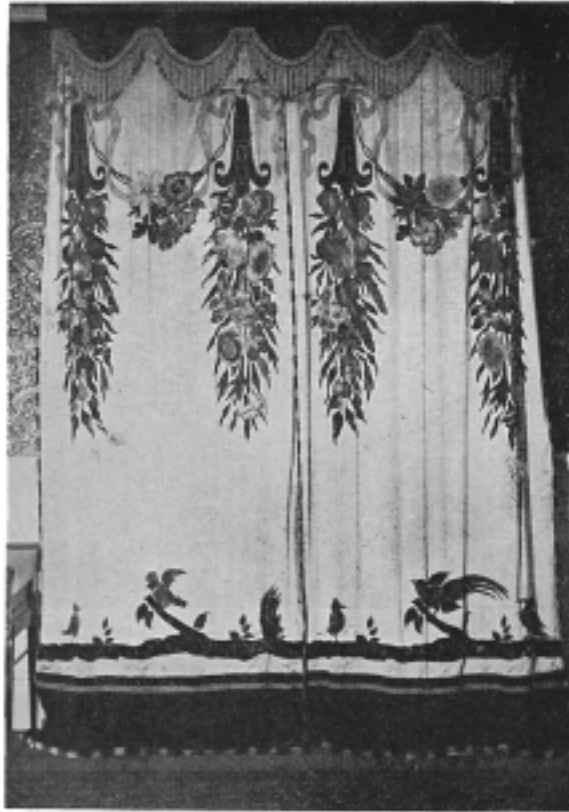
FLOUNCE OF POINT D'ANGLETERRE



THREE FANS FROM THE ICKWORTH COLLECTION

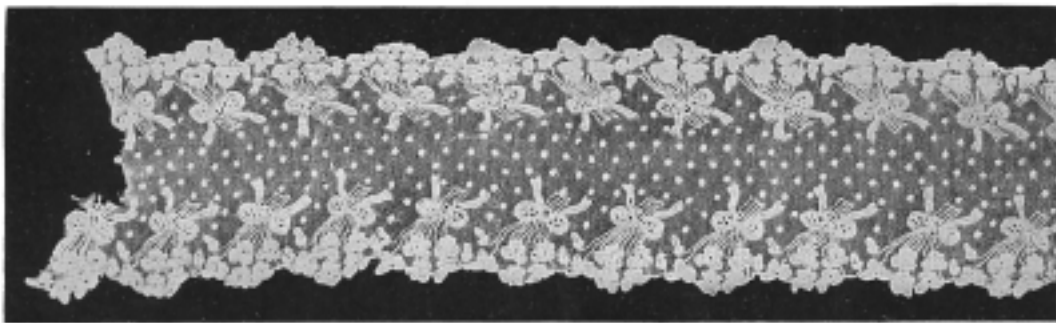
## The Connoisseur

political group, and shows Peter Louis Welman; Stephen Fox, first Lord Ilchester; Henry Fox, first Lord Holland; John Lord Hervey; Charles Duke of Marlborough; and Sir Thomas Winnington, seated in a garden around a table, and examining a plan of a structure. Mr. Welman, in clerical attire, is standing on a chair looking through a telescope, and one of the party is just tilting the chair to fall over. A curious conception altogether, just like Hogarth. The Zoffany is a family group, and consists of Lord and Lady Mulgrave; Mr. and George and Lady Mary Fitzgerald; Frederick Augustus.

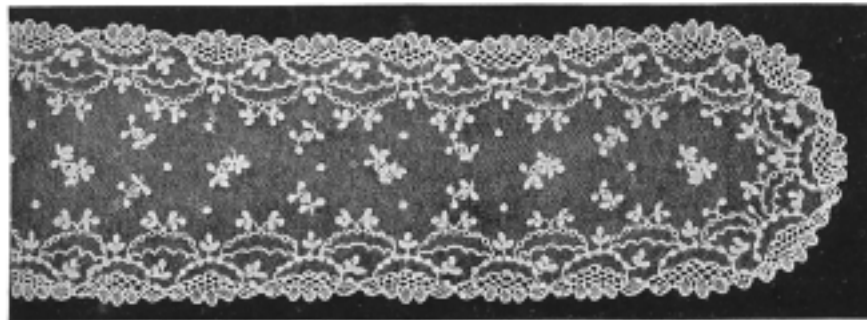


CREWEL WORK ON SATIN BOURRÉ IN NATURAL COLOURS  
BY THE MARCHIONESS OF BRISTOL

third Earl of Bristol; and Mary Lady Hervey. There are several other good pictures here, which space will not permit of mention. Leaving this room and continuing down the corridor, are several good pieces of furniture, notably an incised Chinese commode, with French mounts of very fine work, middle of eighteenth century period. The next room reached is the billiard-room, which forms part of the long corridor in the east wing. Here there are several of Zoffany's works of the sons and daughters of Lord Hervey, the father of the Bishop, and one by Ramsey of Molly Lepel, their



ALENÇON LACE AT ICKWORTH



ALENÇON LACE AT ICKWORTH