

SWEDISH LACE.

BRONSON VERSUS SWEDISH LACE.

It is about time to clear up the mystery of Swedish Lace as compared with Bronson Lace. Are they the same or are they not? Which is better?

As far as the lace part is concerned, they are absolutely the same. I.e. if we cut out a sample of one block of lace and analyse it, we shall get the same result with both. But the drafting is different. Fig.1 shows a draft for the lace in Bronson, and fig.2 a draft for Swedish lace. Both for one block only.

x x x x x x x x x x	o o o o	Fig.1		x x x x x x x x x x	o o o o	Fig.2
------------------------	------------	-------	--	------------------------	------------	-------

But when we have two blocks of lace plus tabby, the fabrics are no more identical. We have a draft for two-block Bronson in fig.3, and a similar draft for Swedish Lace in fig.4.

<table style="width: 100%; border-collapse: collapse;"> <tr> <td style="text-align: center;"> x x x x x x x x x x x x x x x x </td> <td style="border-left: 1px dashed black; padding-left: 5px;"> o o o o o o o o </td> </tr> <tr> <td style="border-left: 1px dashed black; padding-left: 5px;"> m m m m m m m m m m m m m m m m </td> <td style="border-left: 1px dashed black; padding-left: 5px;"> x x </td> </tr> <tr> <td style="border-left: 1px dashed black; padding-left: 5px;"> m m m m m m m m m m m m m m m m </td> <td style="border-left: 1px dashed black; padding-left: 5px;"> x x </td> </tr> <tr> <td style="border-left: 1px dashed black; padding-left: 5px;"> m m m m m m m m m m m m m m m m </td> <td style="border-left: 1px dashed black; padding-left: 5px;"> x x </td> </tr> <tr> <td style="border-left: 1px dashed black; padding-left: 5px;"> m m m m m m m m m m m m m m m m </td> <td style="border-left: 1px dashed black; padding-left: 5px;"> x x </td> </tr> <tr> <td style="border-left: 1px dashed black; padding-left: 5px;"> m m m m m m m m m m m m m m m m </td> <td style="border-left: 1px dashed black; padding-left: 5px;"> x x </td> </tr> <tr> <td style="border-left: 1px dashed black; padding-left: 5px;"> m m m m m m m m m m m m m m m m </td> <td style="border-left: 1px dashed black; padding-left: 5px;"> x x </td> </tr> <tr> <td style="border-left: 1px dashed black; padding-left: 5px;"> m m m m m m m m m m m m m m m m </td> <td style="border-left: 1px dashed black; padding-left: 5px;"> x x </td> </tr> <tr> <td style="border-left: 1px dashed black; padding-left: 5px;"> m m m m m m m m m m m m m m m m </td> <td style="border-left: 1px dashed black; padding-left: 5px;"> x x </td> </tr> <tr> <td style="border-left: 1px dashed black; padding-left: 5px;"> m m m m m m m m m m m m m m m m </td> <td style="border-left: 1px dashed black; padding-left: 5px;"> x x </td> </tr> <tr> <td style="border-left: 1px dashed black; padding-left: 5px;"> m m m m m m m m m m m m m m m m </td> <td style="border-left: 1px dashed black; padding-left: 5px;"> x x </td> </tr> <tr> <td style="border-left: 1px dashed black; padding-left: 5px;"> m m m m m m m m m m m m m m m m </td> <td style="border-left: 1px dashed black; padding-left: 5px;"> x x </td> </tr> <tr> <td style="border-left: 1px dashed black; padding-left: 5px;"> m m m m m m m m m m m m m m m m </td> <td style="border-left: 1px dashed black; padding-left: 5px;"> x x </td> </tr> <tr> <td style="border-left: 1px dashed black; padding-left: 5px;"> m m m m m m m m m m m m m m m m </td> <td style="border-left: 1px dashed black; padding-left: 5px;"> x x </td> </tr> </table>	x x x x x x x x x x x x x x x x	o o o o o o o o	m m m m m m m m m m m m m m m m	x x	m m m m m m m m m m m m m m m m	x x	m m m m m m m m m m m m m m m m	x x	m m m m m m m m m m m m m m m m	x x	m m m m m m m m m m m m m m m m	x x	m m m m m m m m m m m m m m m m	x x	m m m m m m m m m m m m m m m m	x x	m m m m m m m m m m m m m m m m	x x	m m m m m m m m m m m m m m m m	x x	m m m m m m m m m m m m m m m m	x x	m m m m m m m m m m m m m m m m	x x	m m m m m m m m m m m m m m m m	x x	m m m m m m m m m m m m m m m m	x x	<p style="text-align: center;">Fig.3 <u>BRONSON</u></p> <p>- First block of lace</p> <p>- Second block of lace</p> <p>- both blocks combined</p>
x x x x x x x x x x x x x x x x	o o o o o o o o																												
m m m m m m m m m m m m m m m m	x x																												
m m m m m m m m m m m m m m m m	x x																												
m m m m m m m m m m m m m m m m	x x																												
m m m m m m m m m m m m m m m m	x x																												
m m m m m m m m m m m m m m m m	x x																												
m m m m m m m m m m m m m m m m	x x																												
m m m m m m m m m m m m m m m m	x x																												
m m m m m m m m m m m m m m m m	x x																												
m m m m m m m m m m m m m m m m	x x																												
m m m m m m m m m m m m m m m m	x x																												
m m m m m m m m m m m m m m m m	x x																												
m m m m m m m m m m m m m m m m	x x																												
m m m m m m m m m m m m m m m m	x x																												

<table style="width: 100%; border-collapse: collapse;"> <tr> <td style="text-align: center;"> x x x x x x x x x x x x x x </td> <td style="border-left: 1px dashed black; padding-left: 5px;"> o o o o o o o o </td> </tr> <tr> <td style="border-left: 1px dashed black; padding-left: 5px;"> m m m m m m m m m m m m m m m m </td> <td style="border-left: 1px dashed black; padding-left: 5px;"> x x </td> </tr> <tr> <td style="border-left: 1px dashed black; padding-left: 5px;"> m m m m m m m m m m m m m m m m </td> <td style="border-left: 1px dashed black; padding-left: 5px;"> x x </td> </tr> <tr> <td style="border-left: 1px dashed black; padding-left: 5px;"> m m m m m m m m m m m m m m m m </td> <td style="border-left: 1px dashed black; padding-left: 5px;"> x x </td> </tr> <tr> <td style="border-left: 1px dashed black; padding-left: 5px;"> m m m m m m m m m m m m m m m m </td> <td style="border-left: 1px dashed black; padding-left: 5px;"> x x </td> </tr> <tr> <td style="border-left: 1px dashed black; padding-left: 5px;"> m m m m m m m m m m m m m m m m </td> <td style="border-left: 1px dashed black; padding-left: 5px;"> x x </td> </tr> <tr> <td style="border-left: 1px dashed black; padding-left: 5px;"> m m m m m m m m m m m m m m m m </td> <td style="border-left: 1px dashed black; padding-left: 5px;"> x x </td> </tr> <tr> <td style="border-left: 1px dashed black; padding-left: 5px;"> m m m m m m m m m m m m m m m m </td> <td style="border-left: 1px dashed black; padding-left: 5px;"> x x </td> </tr> <tr> <td style="border-left: 1px dashed black; padding-left: 5px;"> m m m m m m m m m m m m m m m m </td> <td style="border-left: 1px dashed black; padding-left: 5px;"> x x </td> </tr> <tr> <td style="border-left: 1px dashed black; padding-left: 5px;"> m m m m m m m m m m m m m m m m </td> <td style="border-left: 1px dashed black; padding-left: 5px;"> x x </td> </tr> <tr> <td style="border-left: 1px dashed black; padding-left: 5px;"> m m m m m m m m m m m m m m m m </td> <td style="border-left: 1px dashed black; padding-left: 5px;"> x x </td> </tr> <tr> <td style="border-left: 1px dashed black; padding-left: 5px;"> m m m m m m m m m m m m m m m m </td> <td style="border-left: 1px dashed black; padding-left: 5px;"> x x </td> </tr> <tr> <td style="border-left: 1px dashed black; padding-left: 5px;"> m m m m m m m m m m m m m m m m </td> <td style="border-left: 1px dashed black; padding-left: 5px;"> x x </td> </tr> <tr> <td style="border-left: 1px dashed black; padding-left: 5px;"> m m m m m m m m m m m m m m m m </td> <td style="border-left: 1px dashed black; padding-left: 5px;"> x x </td> </tr> <tr> <td style="border-left: 1px dashed black; padding-left: 5px;"> m m m m m m m m m m m m m m m m </td> <td style="border-left: 1px dashed black; padding-left: 5px;"> x x </td> </tr> </table>	x x x x x x x x x x x x x x	o o o o o o o o	m m m m m m m m m m m m m m m m	x x	m m m m m m m m m m m m m m m m	x x	m m m m m m m m m m m m m m m m	x x	m m m m m m m m m m m m m m m m	x x	m m m m m m m m m m m m m m m m	x x	m m m m m m m m m m m m m m m m	x x	m m m m m m m m m m m m m m m m	x x	m m m m m m m m m m m m m m m m	x x	m m m m m m m m m m m m m m m m	x x	m m m m m m m m m m m m m m m m	x x	m m m m m m m m m m m m m m m m	x x	m m m m m m m m m m m m m m m m	x x	m m m m m m m m m m m m m m m m	x x	m m m m m m m m m m m m m m m m	x x	<p style="text-align: center;">Fig.4 <u>SWEDISH</u></p> <p>- First block of lace</p> <p>- second block of lace</p> <p>- both blocks combined</p>
x x x x x x x x x x x x x x	o o o o o o o o																														
m m m m m m m m m m m m m m m m	x x																														
m m m m m m m m m m m m m m m m	x x																														
m m m m m m m m m m m m m m m m	x x																														
m m m m m m m m m m m m m m m m	x x																														
m m m m m m m m m m m m m m m m	x x																														
m m m m m m m m m m m m m m m m	x x																														
m m m m m m m m m m m m m m m m	x x																														
m m m m m m m m m m m m m m m m	x x																														
m m m m m m m m m m m m m m m m	x x																														
m m m m m m m m m m m m m m m m	x x																														
m m m m m m m m m m m m m m m m	x x																														
m m m m m m m m m m m m m m m m	x x																														
m m m m m m m m m m m m m m m m	x x																														
m m m m m m m m m m m m m m m m	x x																														

Comparing the two drafts we can deduce that: 1) the tie-up for the Swedish lace is better balanced than the tie-up for Bronson; we have 2 against 3 instead of 1 against 3, and the tabby is 2 against 2. 2) the combined blocks in Swedish do not lie in the same line, when in Bronson they are perfectly aligned. Thus so far Swedish is superior in one way, and Bronson in another.

For the weavers who have counterbalanced looms without a shed regulator Swedish Lace is practically the only lace which can be woven in comfort, and which gives two blocks of pattern. The two blocks combined look bad on the draw-down, but not so bad on a woven piece. For the owners of Jack-type looms Bronson is much better, because of the alignment of blocks.

However when we weave "turned lace", with floats on the same side of the fabric running in two different directions: vertical in one block, and horizontal in the other, then we must change the tie-ups, and the result is different again.

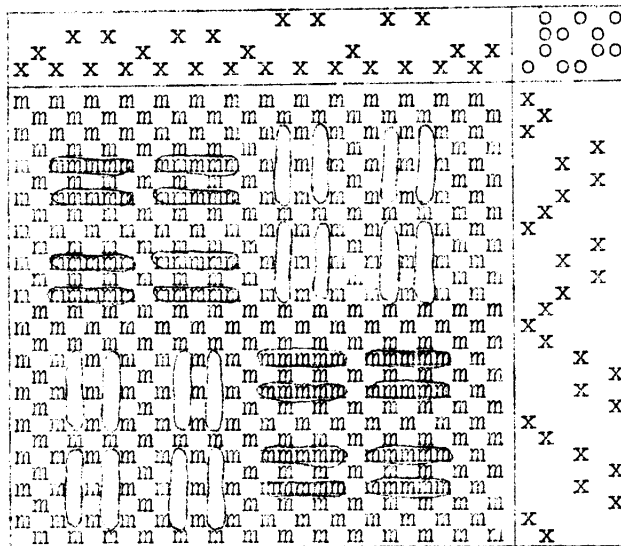


Fig.5 Bronson turned lace.

The vertical floats are not in line with the horizontal ones.

Unbalanced tie-up.

The distance between blocks of lace not the same in the two directions.

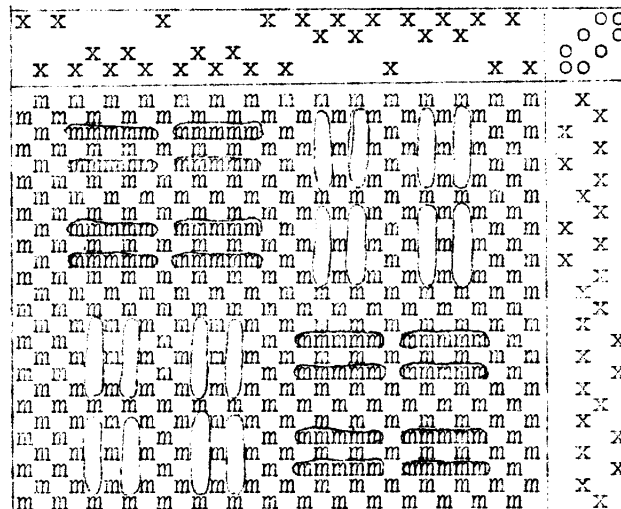


Fig.6 Swedish turned lace.

Floats in warp are in line with floats in weft.

The tie-up is perfectly balanced.

The distance between floats is the same in both directions.

Compare fig.5 (Bronson lace) and fig.6 (Swedish lace).

