

JACQUARD-GEWEBE.

Fig. 1.

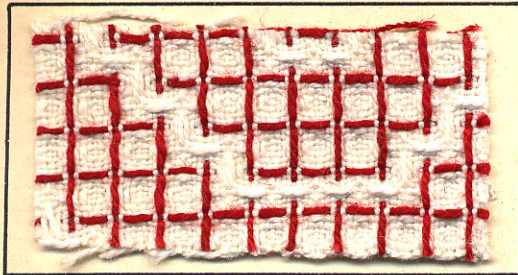


Fig. 2.

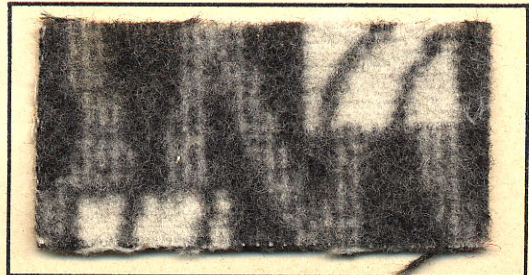


Fig. 3.

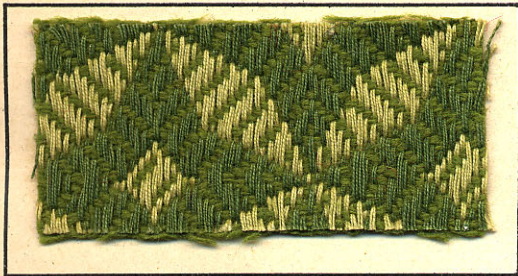


Fig. 4.

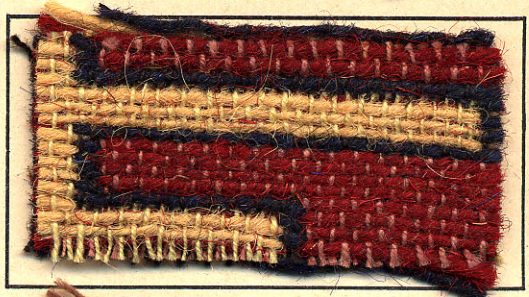


Fig. 5.

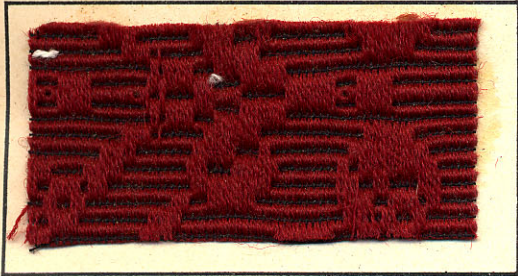


Fig. 6.



Fig. 7.

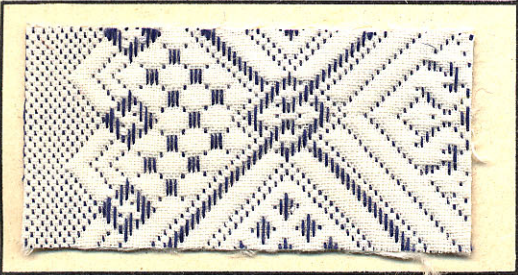


Fig. 8.

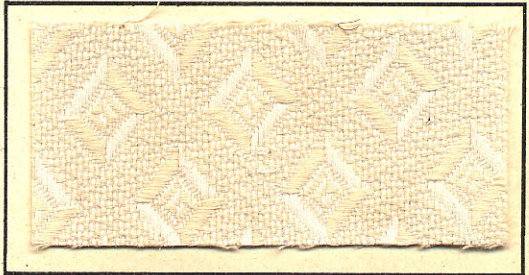


Fig. 9.



Fig. 10.

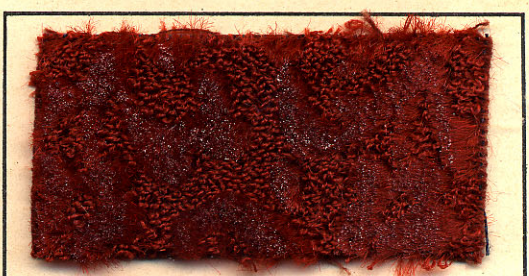


Fig. 11.



Fig. 12.



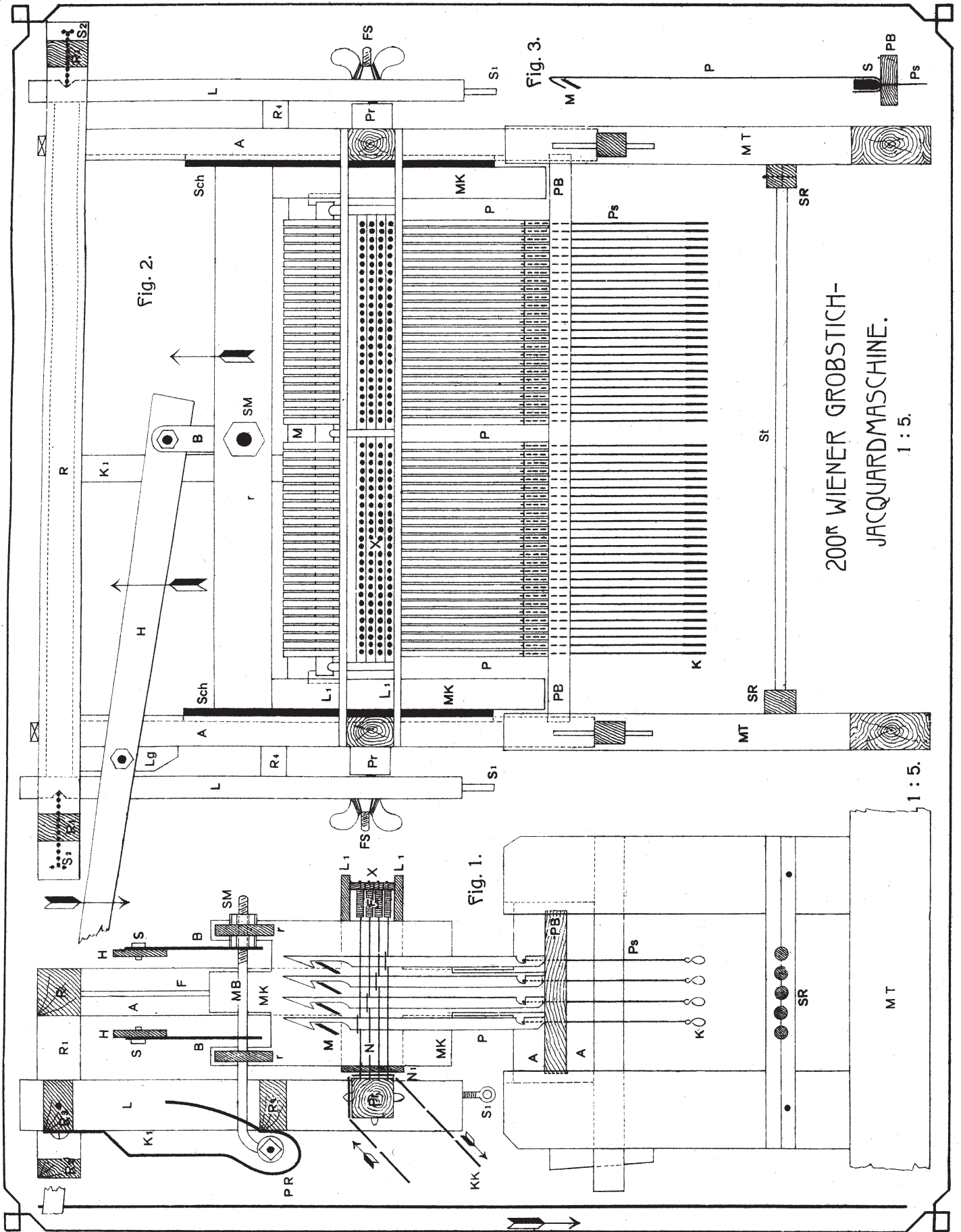


Fig. 2.

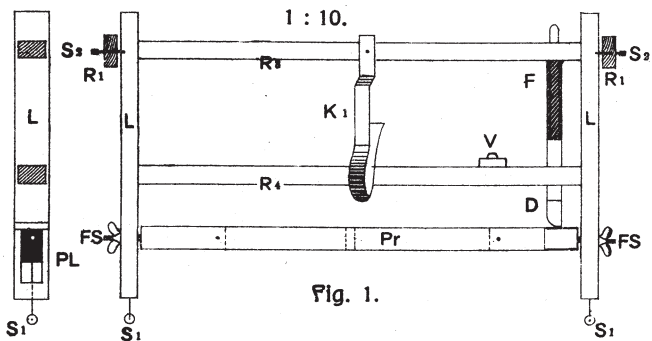
Fig. 1.

Fig. 3.

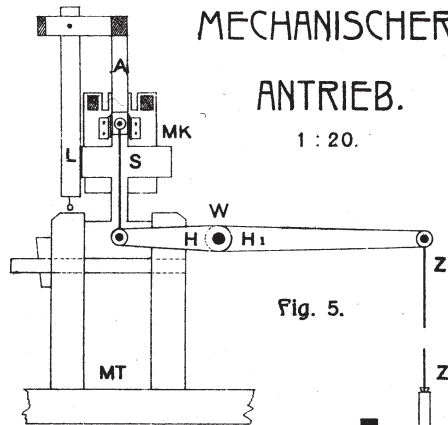
200^r WIENER GROBSTICH-
JACQUARDMASCHINE.
1 : 5.

1 : 5.

PRISMALEDE.

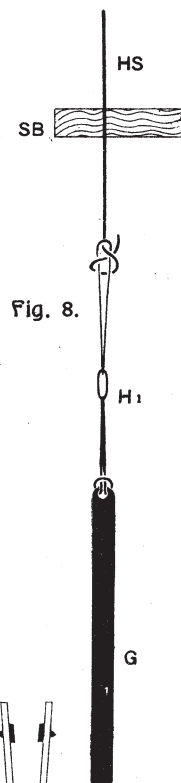
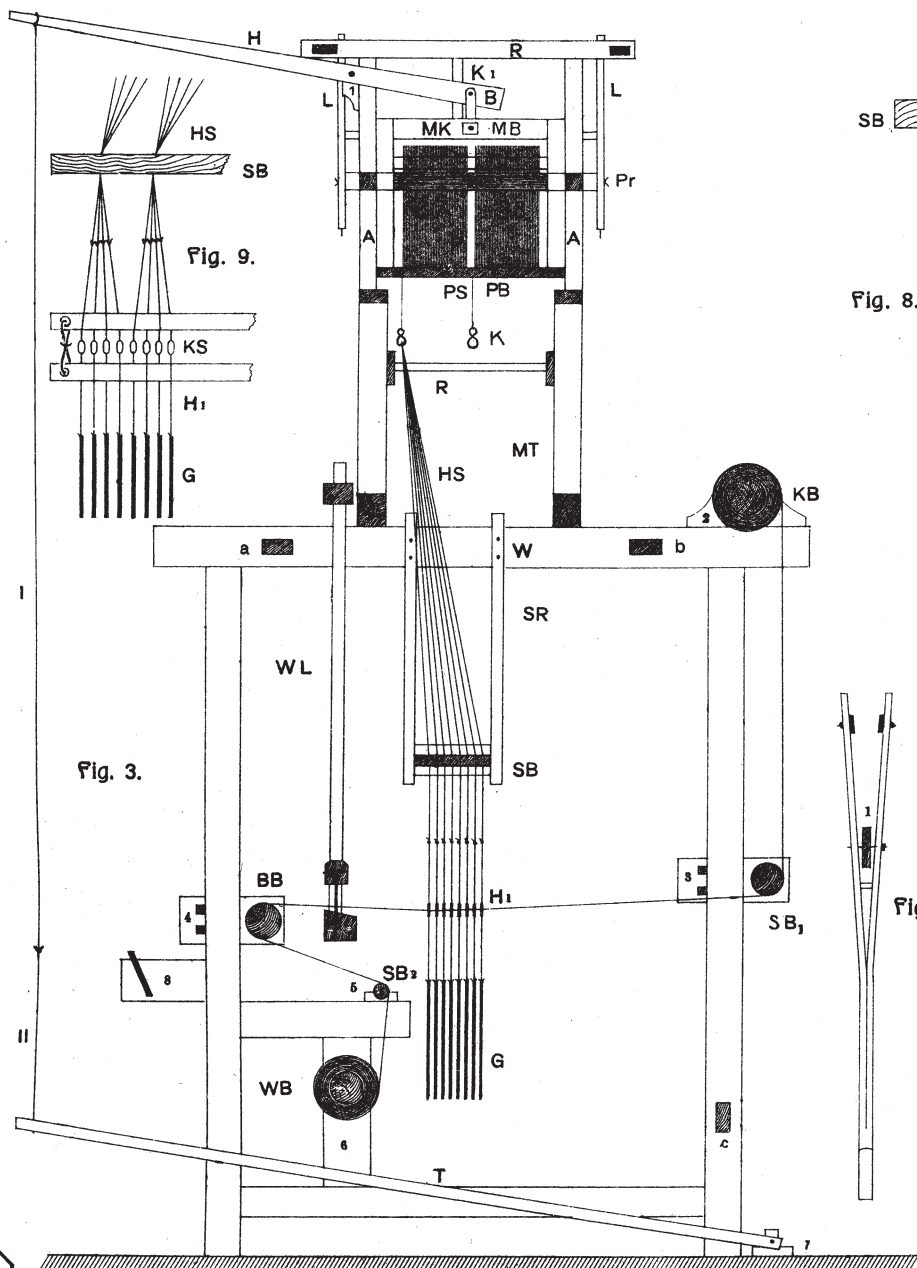


MECHANISCHER ANTRIEB.



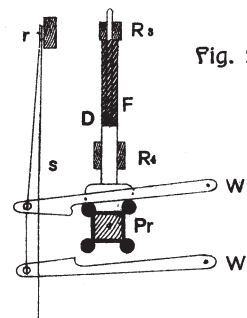
DER JACQUARD-HANDWEBSTUHL.

1 : 20.

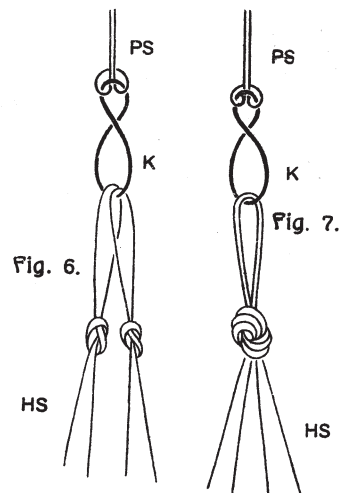
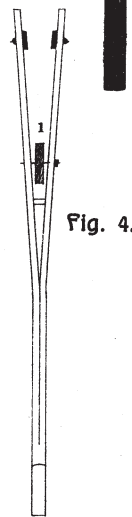


WENDEHAKEN.

1 : 10.



KARABINER U. HEBESCHNÜRE.



GERADE SCHNÜRORDNUNG NACH DEUTSCHEM SYSTEM

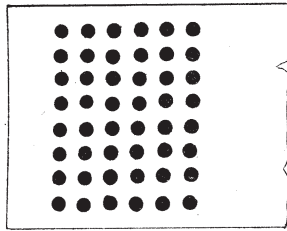


Fig. 3.

GERADE GEBOHRT.

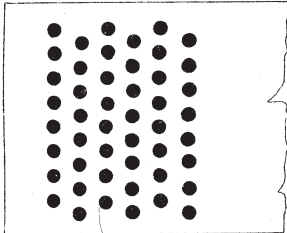


Fig. 4.

VERSETZT GEBOHRT.

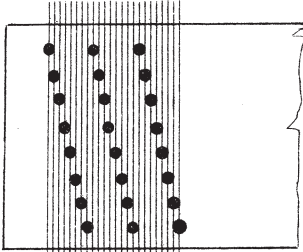


Fig. 5.

SCHRÄG GEBOHRT.

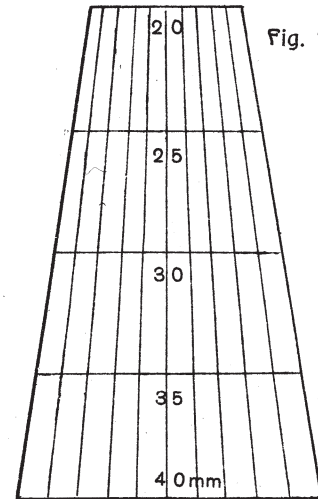
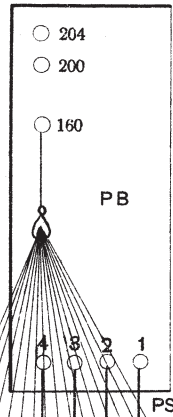


Fig. 7.

SKIZZENEINTEILER.

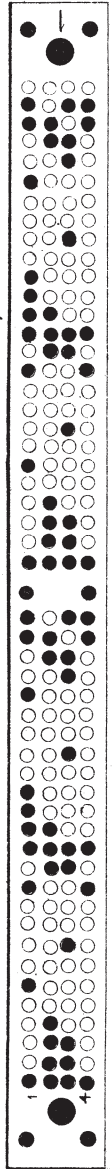


Fig. 6.

KARTE NR 1 DER MUSTERZEICHNUNG FIG. 4, TAFEL XI.

Fig. 1.

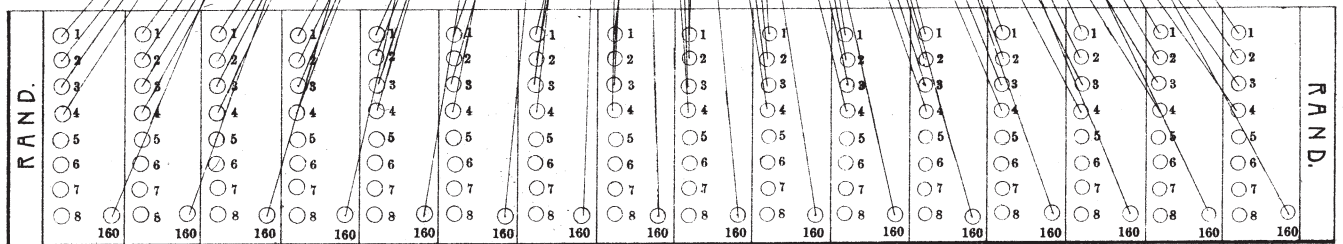
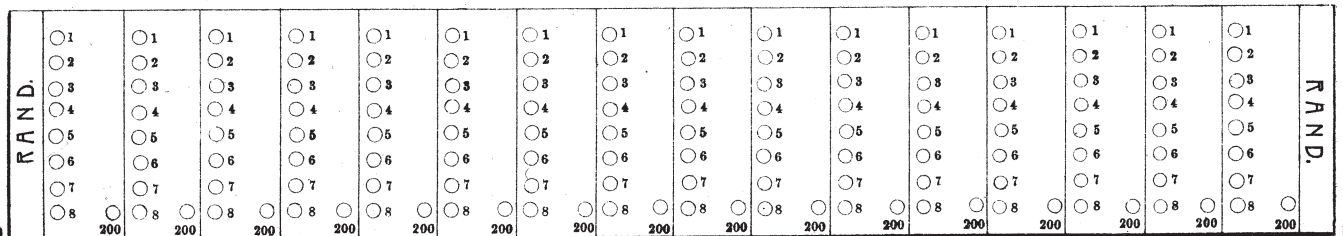
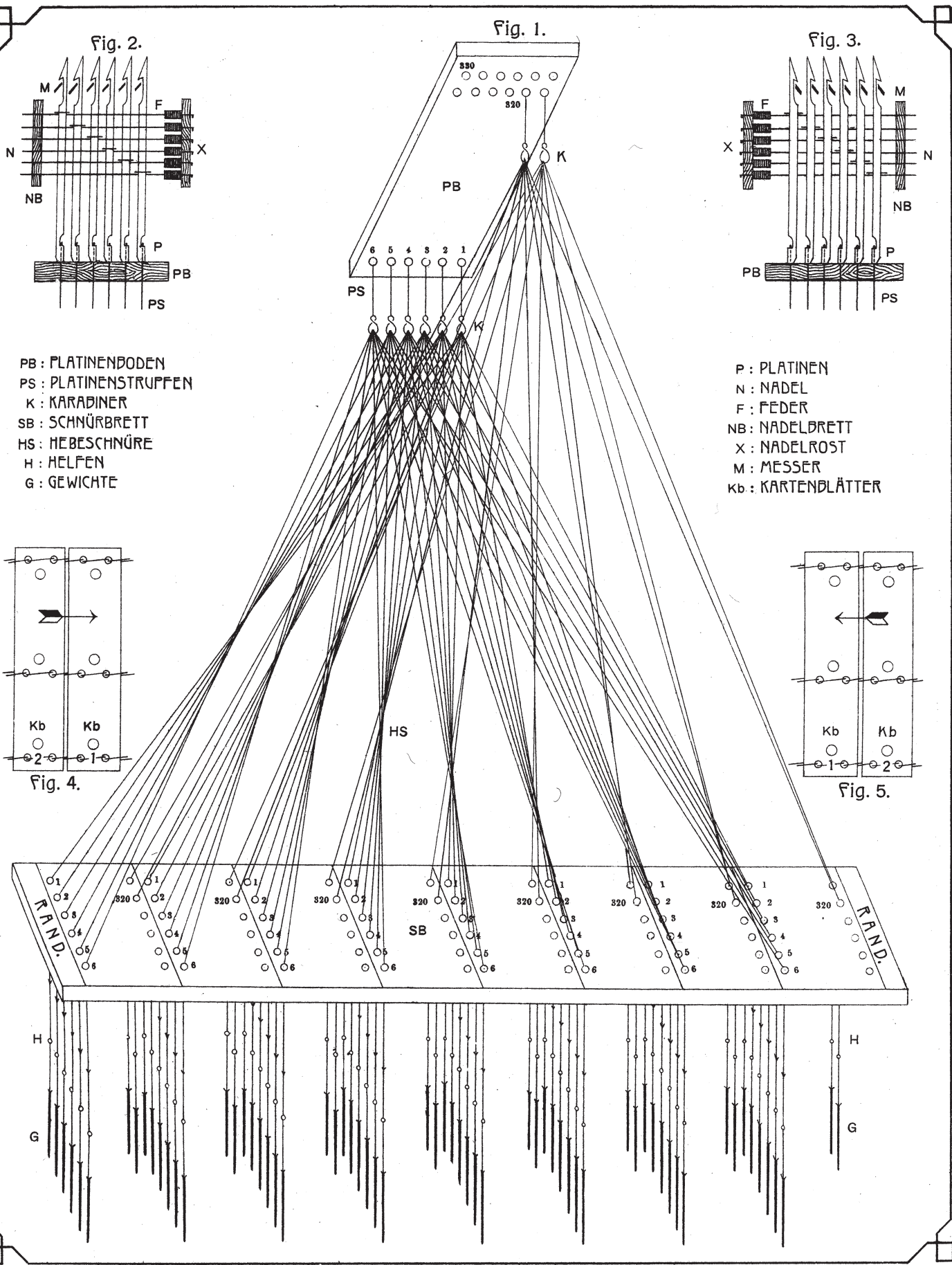


Fig. 2.



GERADE SCHNÜRORDNUNG NACH DEUTSCHEM SYSTEM.



SCHNÜRORDNUNGEN.

GERADE ENGL. SCHNÜRUNG.

PRISMA HINTEN

400R JACQUARDMASCHINE

1600 KETTENFÄDEN

1600 : 400 = 4 RAPPORTE.

NADELROST

Fig. 5.

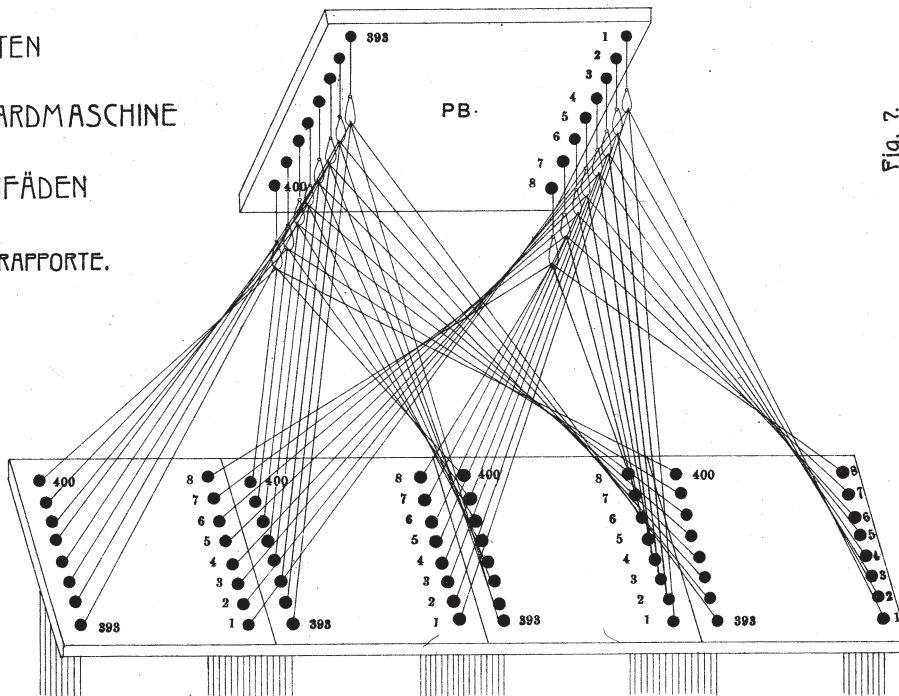
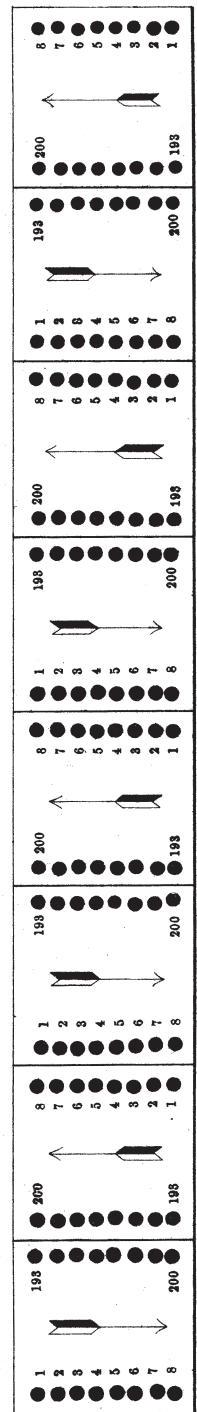


Fig. 7.



GERADE ENGL. SCHNÜRUNG.

PRISMA VORN

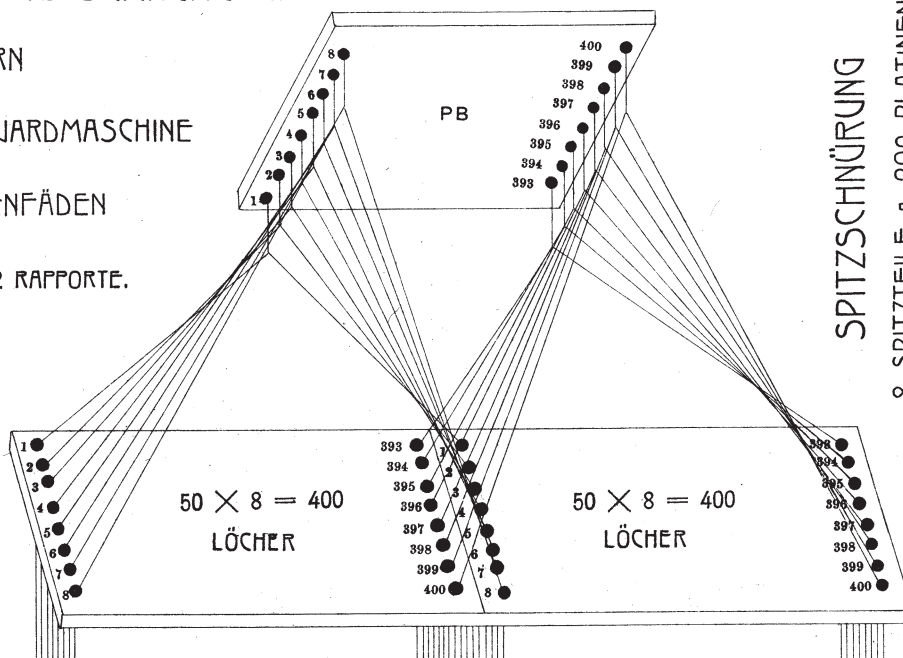
400R JACQUARDMASCHINE

800 KETTENFÄDEN

800 : 400 = 2 RAPPORTE.

NADELBRETT

Fig. 6.



SPITZSCHNÜRUNG
8 SPITZTEILE A 200 PLATINEN.

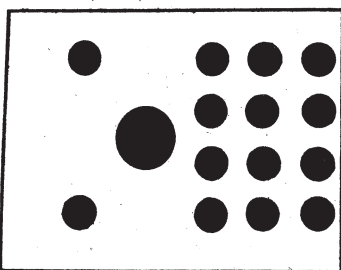


Fig. 1.

KARTENTEILE.

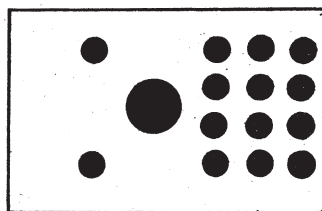


Fig. 2.

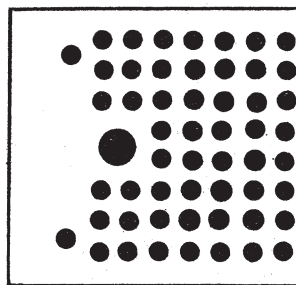


Fig. 3.

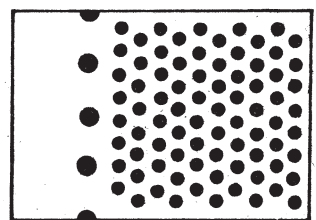


Fig. 4.

DIREKTE JACQUARDMUSTER.

Fig. 1.

50 : 50

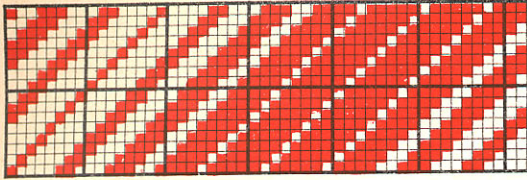


Fig. 2.

50 : 50

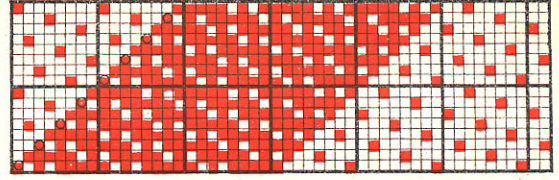
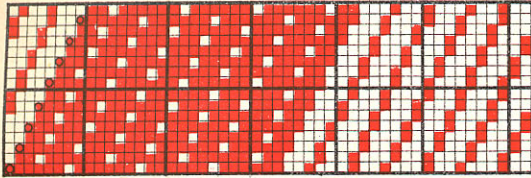


Fig. 3.

50 : 100



4.

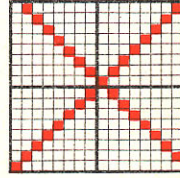


Fig. 8.

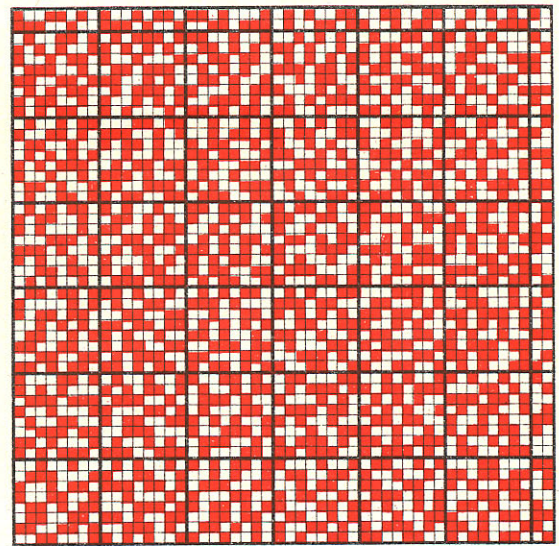
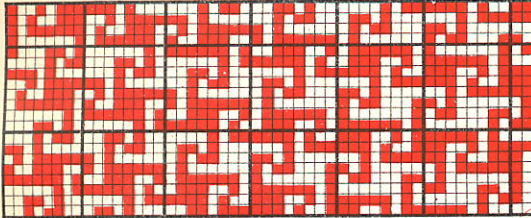


Fig. 7.

50 : 50



5.

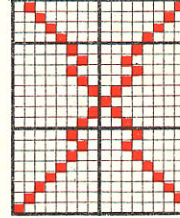


Fig. 6.

Fig. 10.

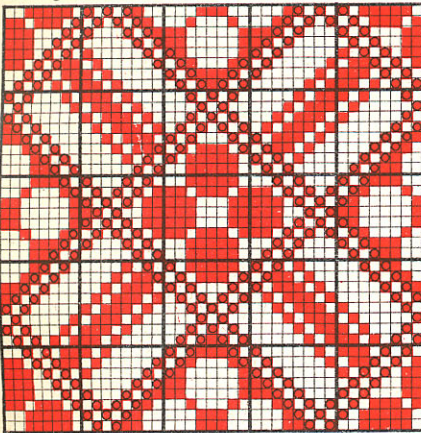
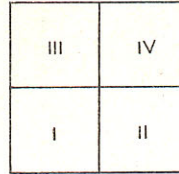


Fig. 12.

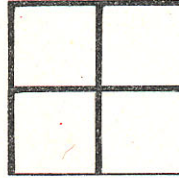
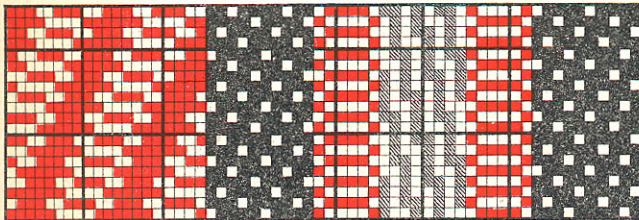


Fig. 9.



160 : 20.

Fig. 15.

6 mal

6 mal

Fig. 19.

Fig. 20.

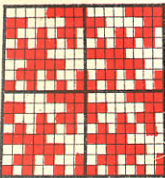


Fig. 14.

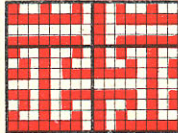


Fig. 16.

Fig. 17.

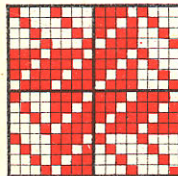
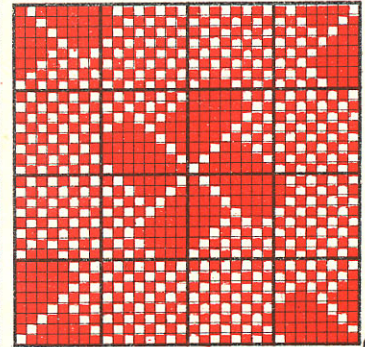
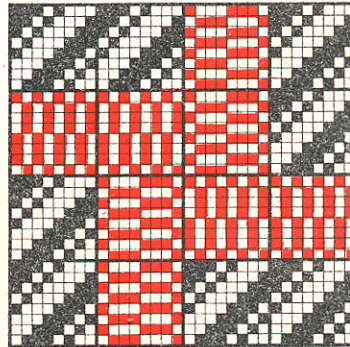
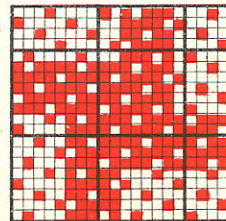
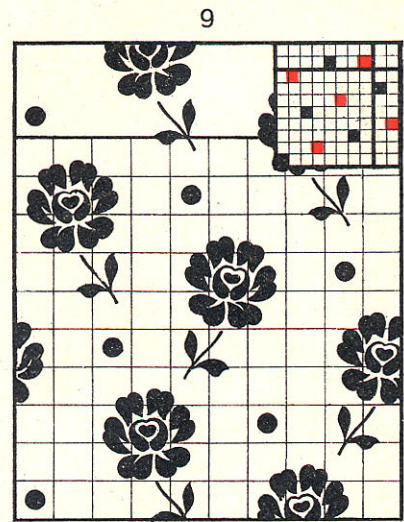
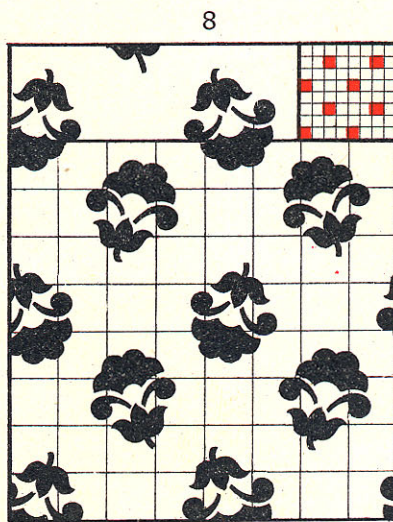
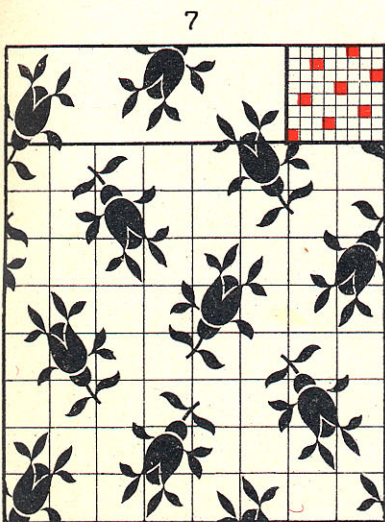
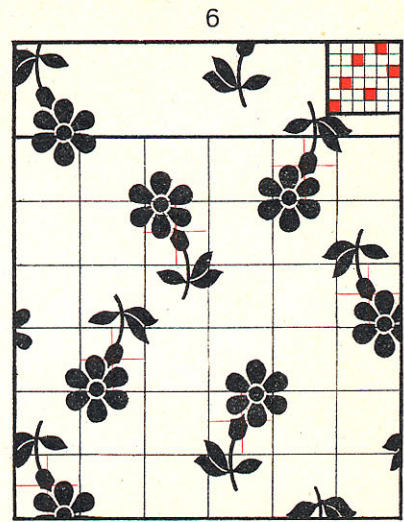
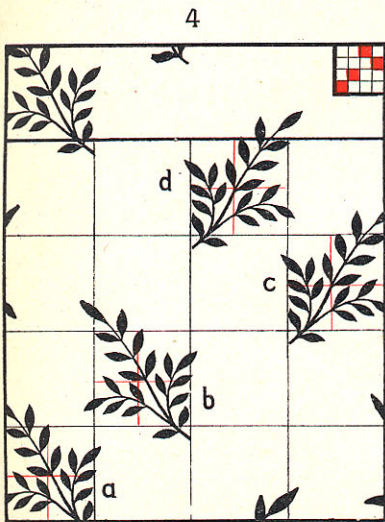
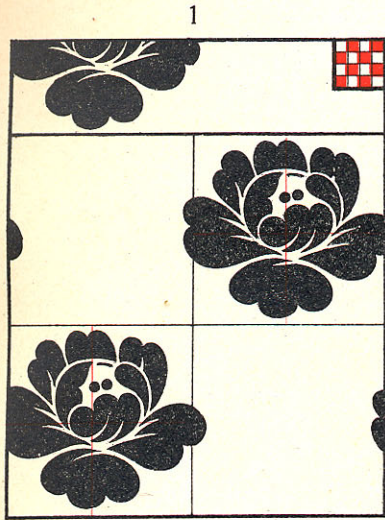


Fig. 18.



ENTWURF-SKIZZE ODER KOMPOSITION.

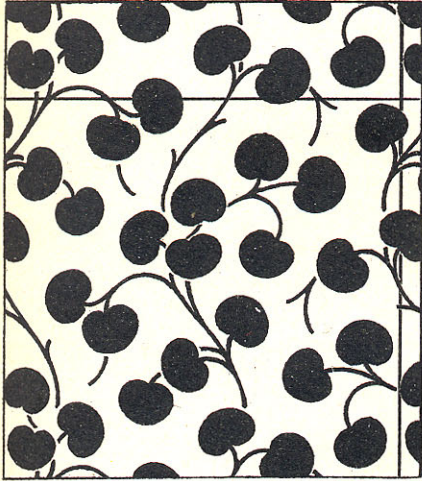
VERSETZTE JACQUARDMUSTER



ENTWURF, SKIZZE ODER KOMPOSITION.

RANKEN-, SPITZ-, REZIPROKE-, STREIFEN- UND ABGEPASSTE MUSTER.

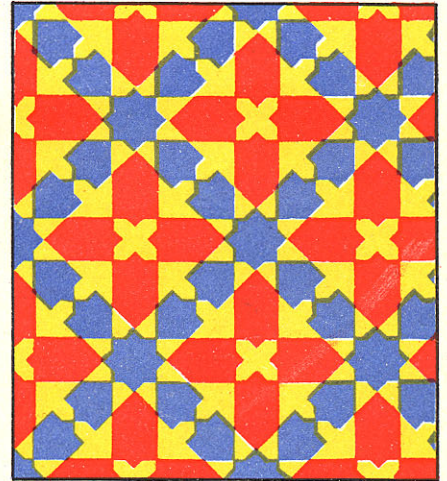
1.



2.



3.



4.



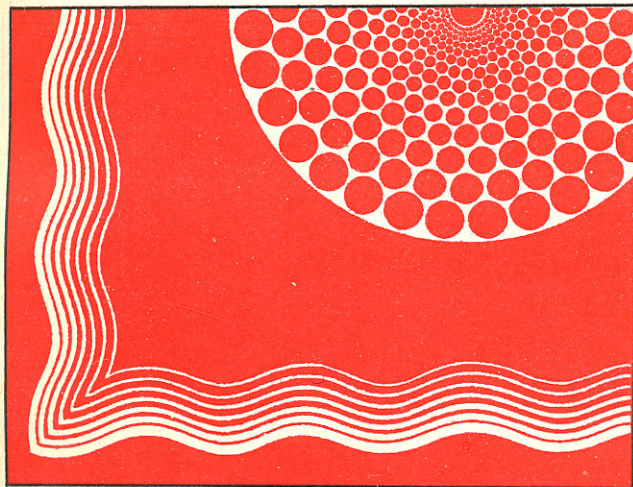
5.



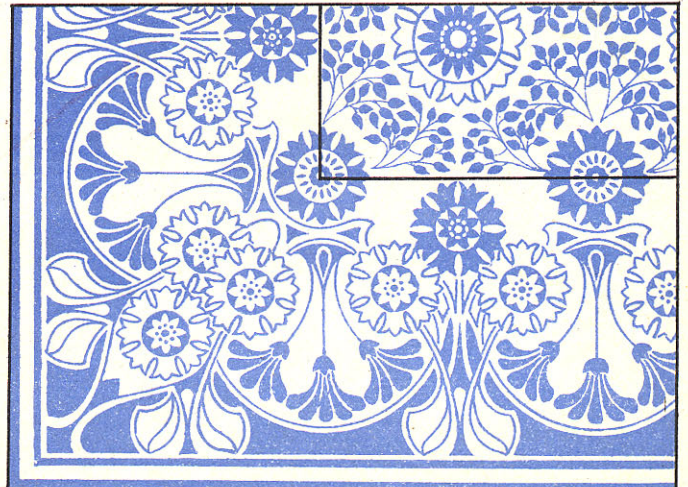
6.



7.



8.



DAS INDIREKTE JACQUARDMUSTER.

DAS MUSTERZEICHNEN
ODER PATRONIEREN.

Fig. 2.

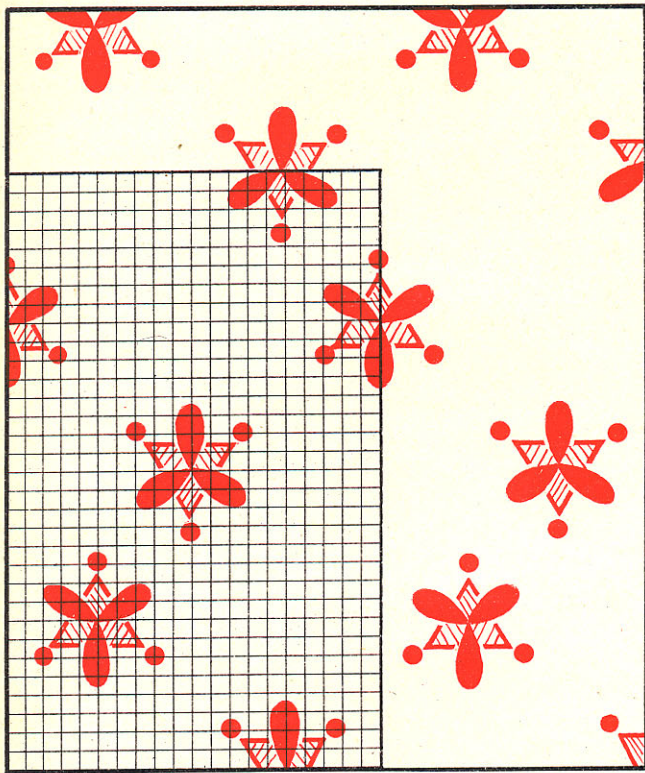


Fig. 4.

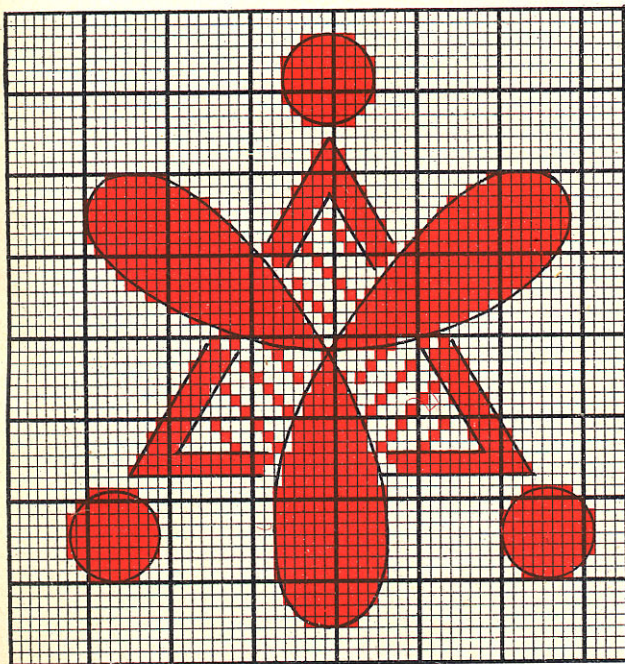


Fig. 1.



Fig. 3.

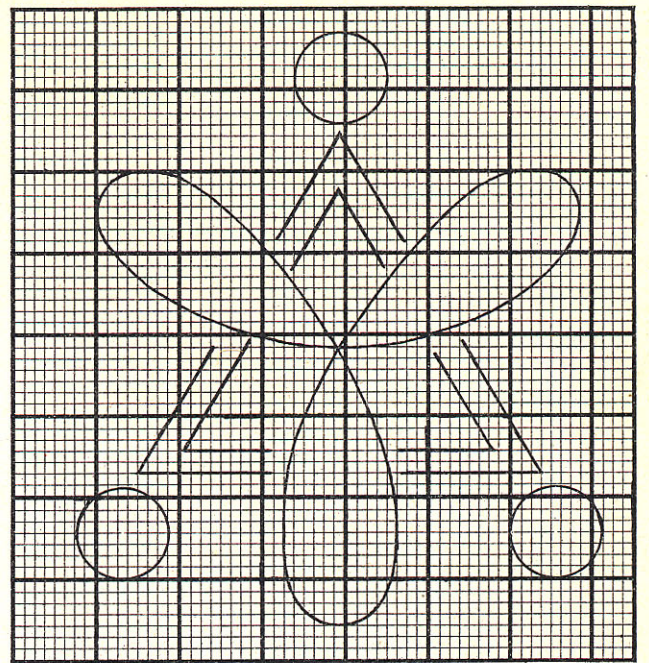


Fig. 5.

