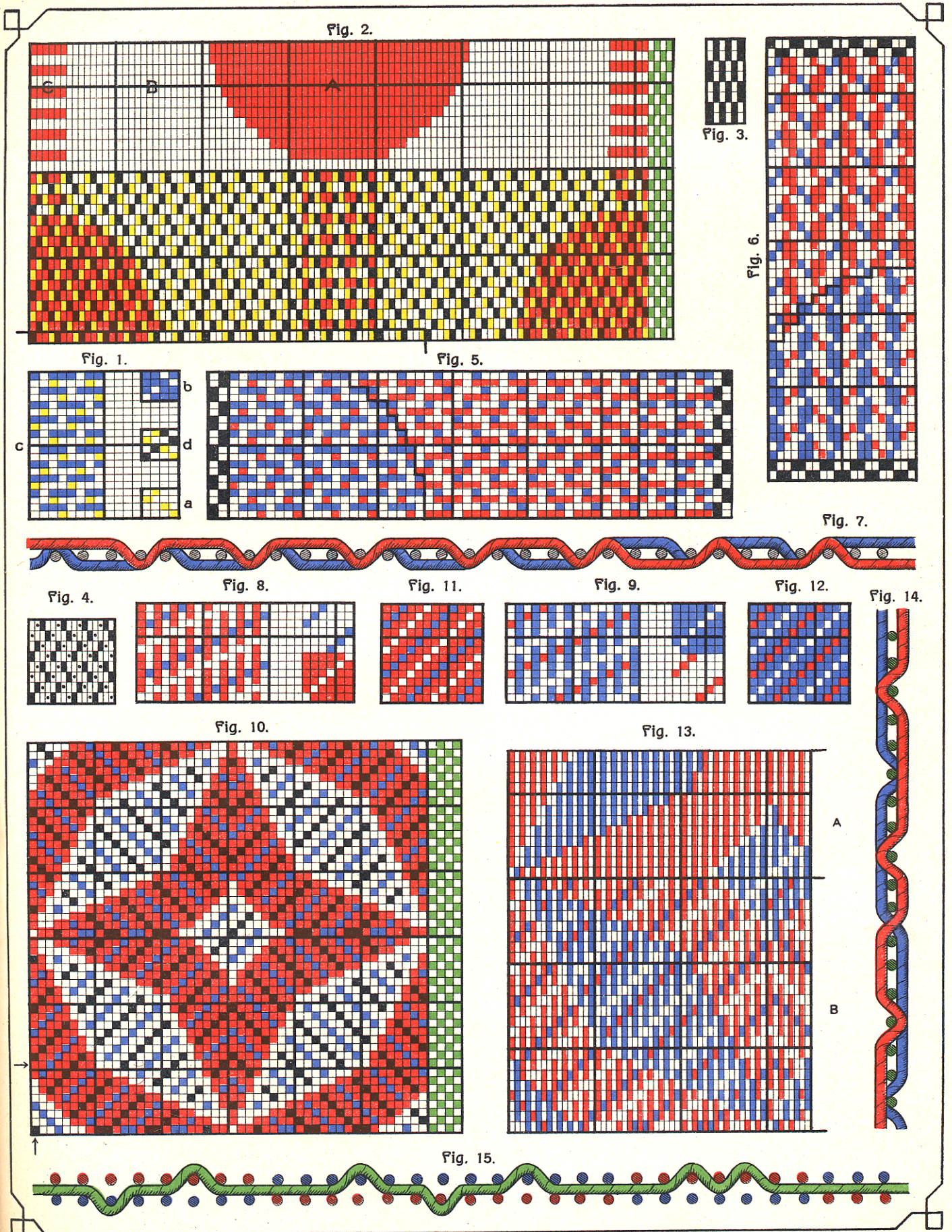


# FIGURIERTE SCHUSS- UND KETTENDOUBLES.

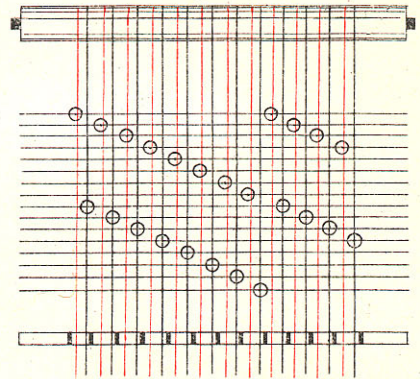


# FIGURIERTES DOPPELGEWEBE.

Fig. 1.



Fig. 9.



800R JACQUARDMASCHINE  
 GEMISCHTE 2TEILIGE SCHNÜRWEISE:  
 KANTE: SPITZ  
 2 SPITZTEILE  
 MITTE: GERADE  
 5 RAPPORTE.

1—224. Pl. I. Teil Bordüre  
 225.—424. Pl. I. „ Mitte  
 425.—648. Pl. II. „ Bordüre  
 649—848. Pl. II. „ Mitte.

Fig. 8.

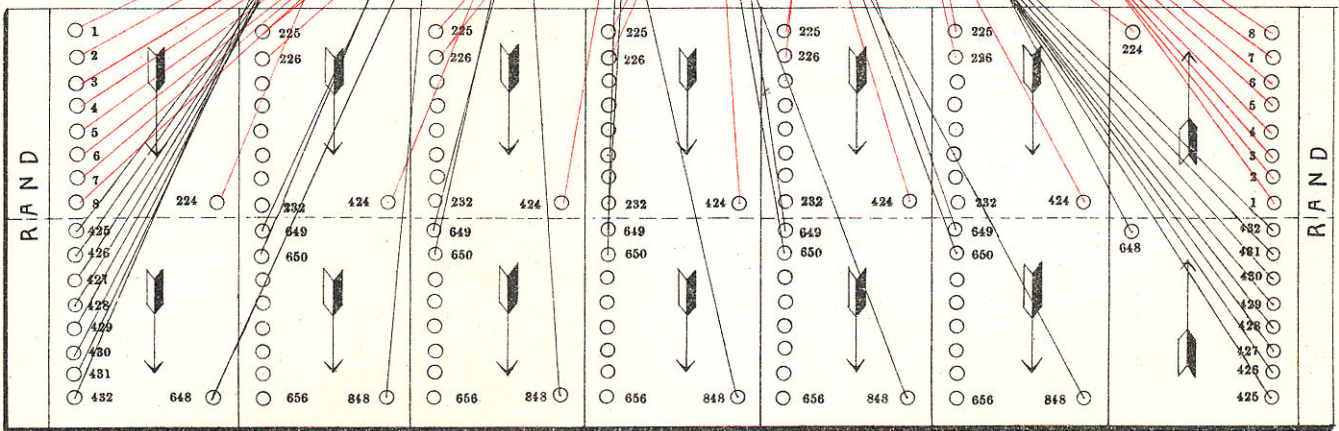


Fig. 2.

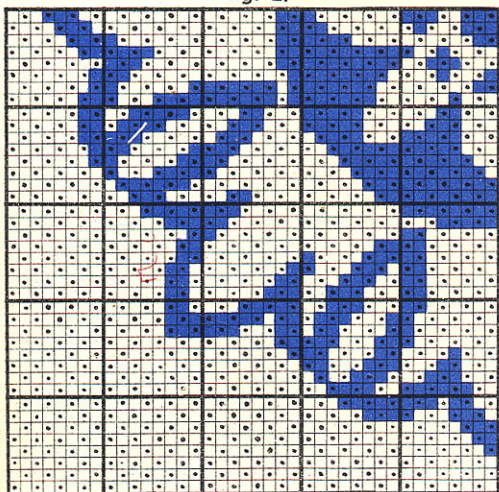


Fig. 10.



Fig. 4.

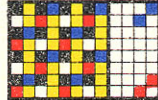


Fig. 6.



Fig. 7.



Fig. 11.



Fig. 5.

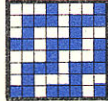


Fig. 3.

