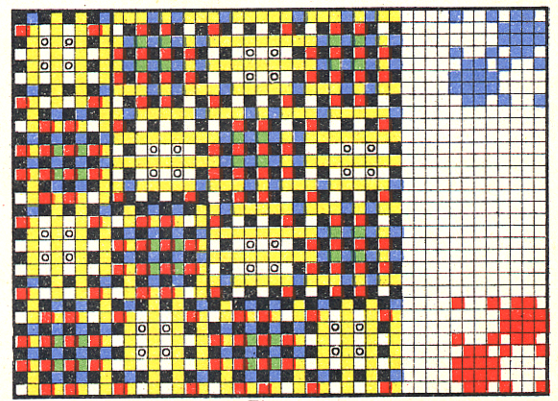
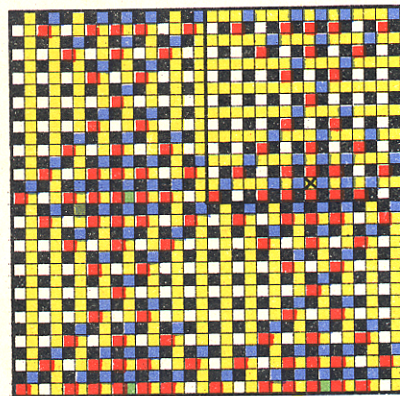
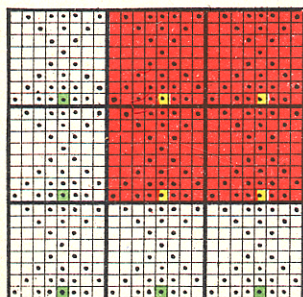
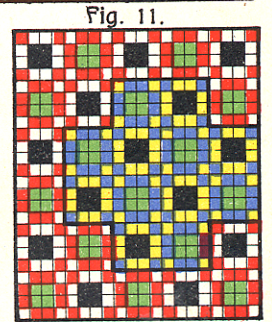
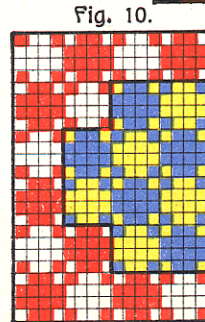
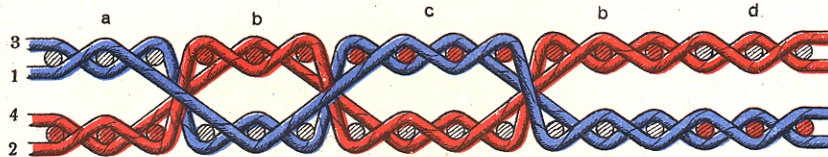
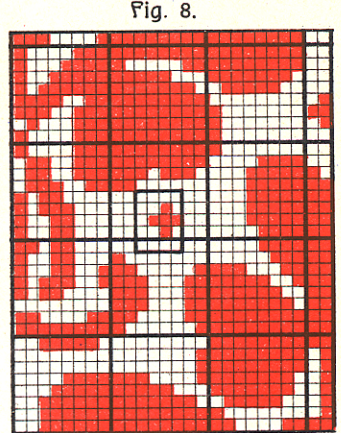
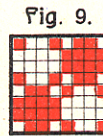
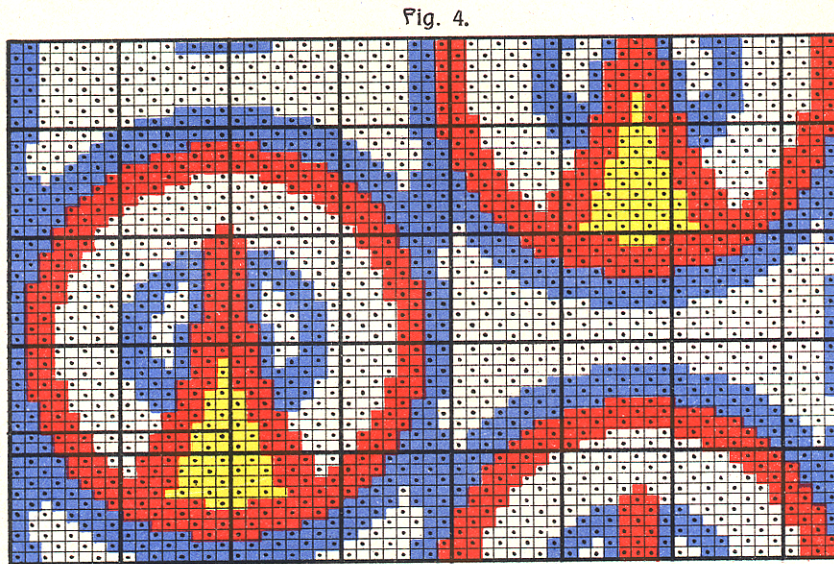
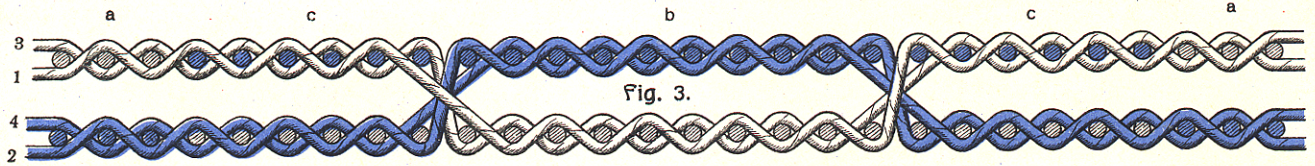
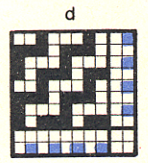
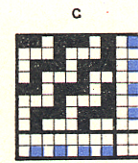
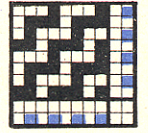
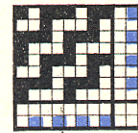
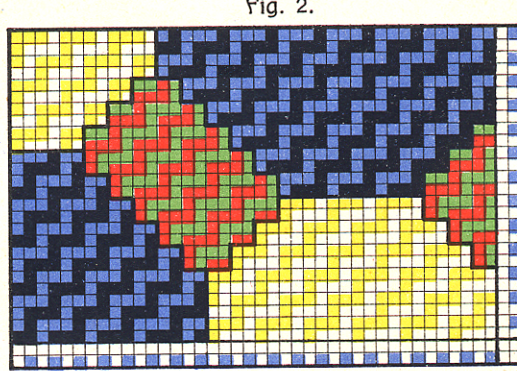
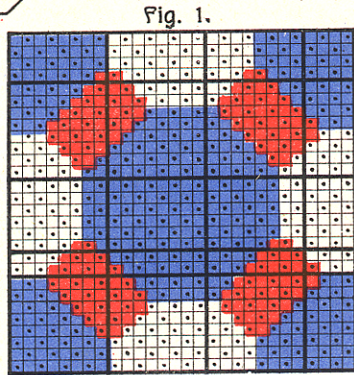


FIGURIERTE DOPPELGEWEBE.



FIGURIERTES DREIFACHES GEWEBE.

600^R JACQUARDMASCHINE.

SCHNÜRORDNUNG:

3TEILIG GERADE.

PLATINENEINTEILUNG:

1.—192. PLATINE I. TEIL

193.—384. „ II. TEIL

385.—576. „ III. TEIL.

Fig. 3.

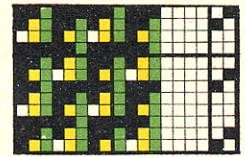
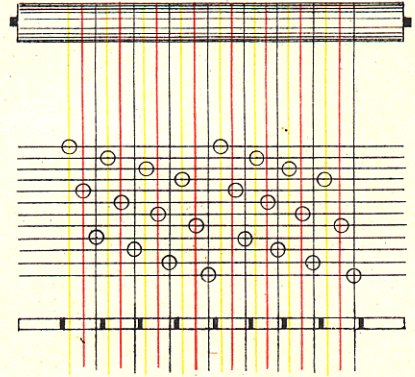


Fig. 5.

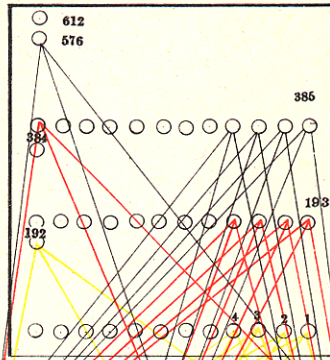


Fig. 2.

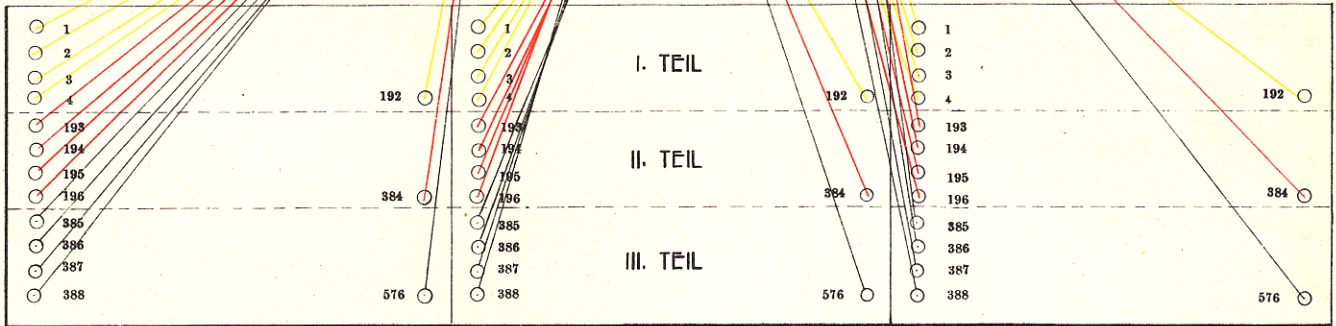
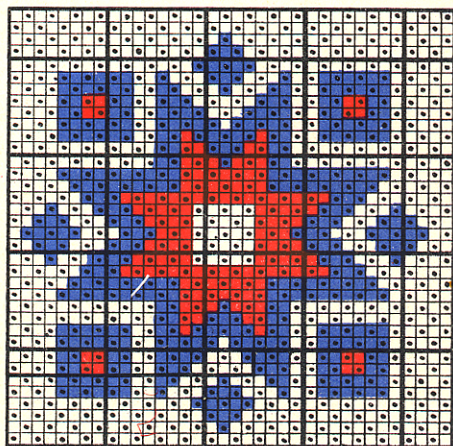
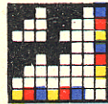


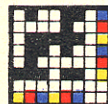
Fig. 1.



6.



7.



8.



Fig. 4.

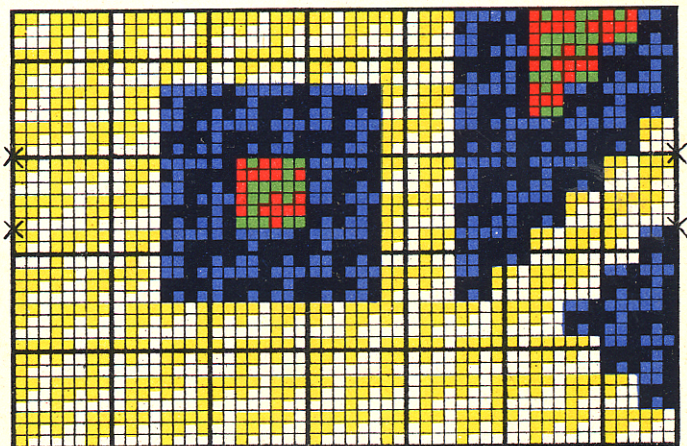


Fig. 9.

