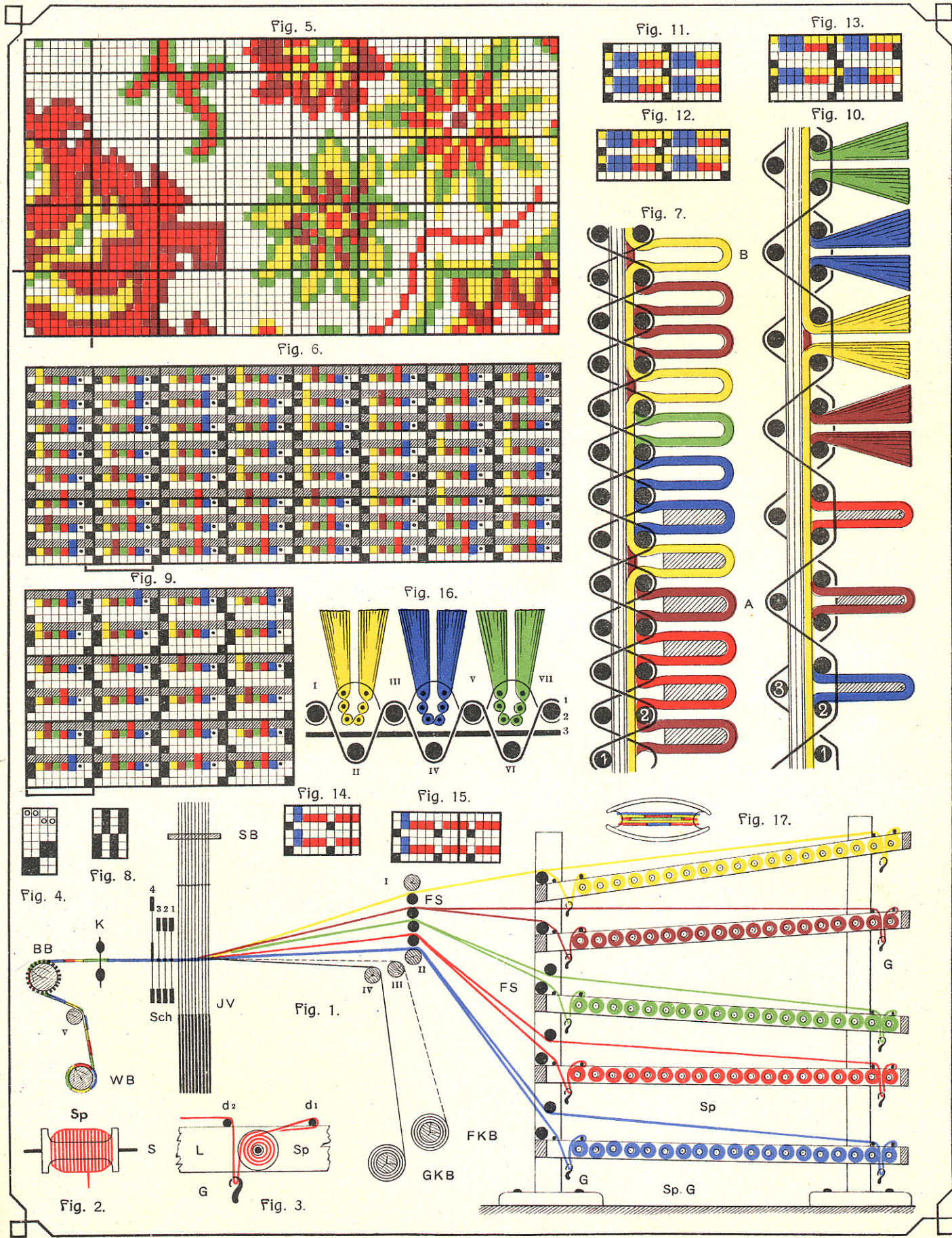


PLÜSCH- UND AXMINSTER-TEPPICHE.



FROTTIER- ODER SCHLINGENSTOFF.

Fig. 7.

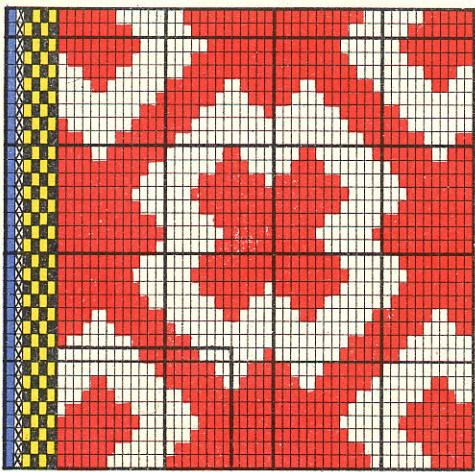


Fig. 8.

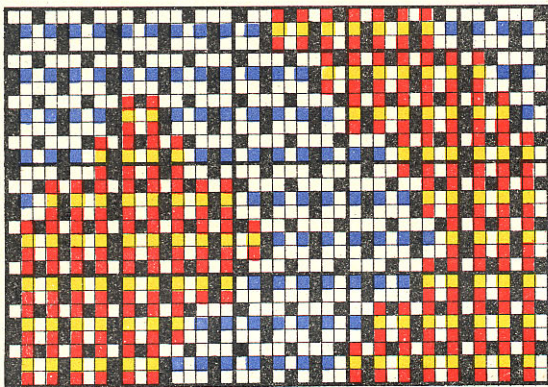


Fig. 12.

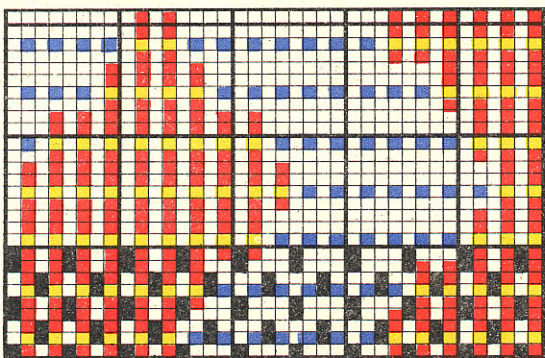
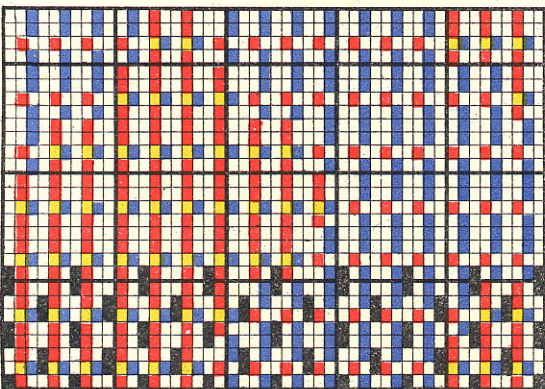


Fig. 14.



6.



11.



10.

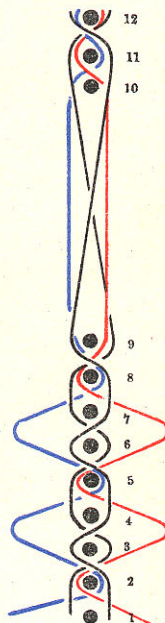


Fig. 1.

Fig. 2.

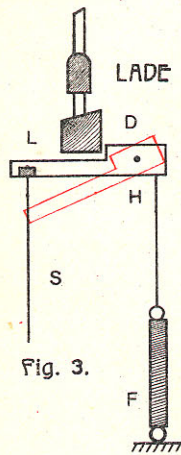
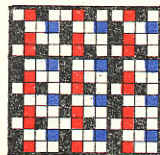


Fig. 3.

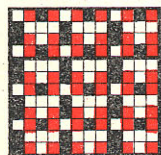


Fig. 4.

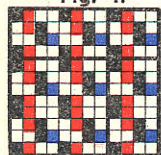


Fig. 5.

Fig. 9.

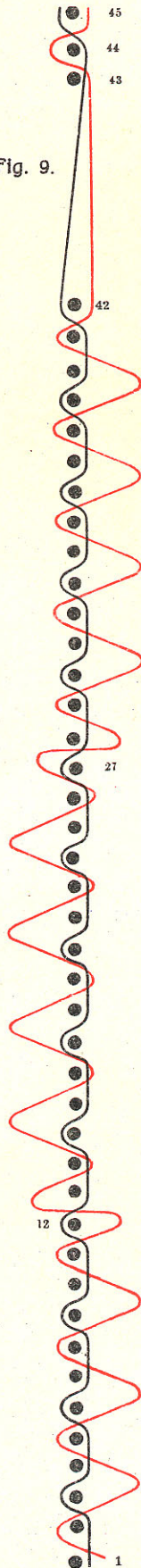


Fig. 13.

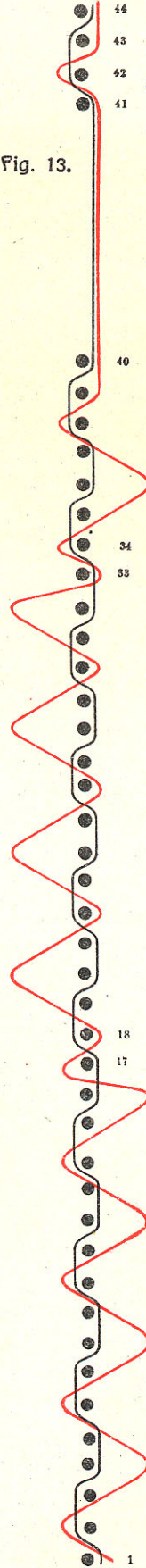
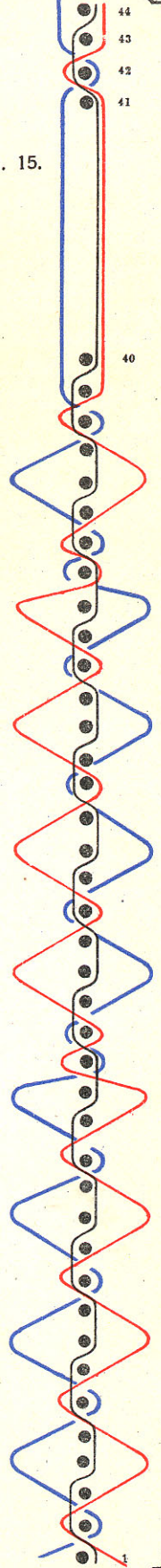


Fig. 15.



DREHER ODER GAZE.

Fig. 1.

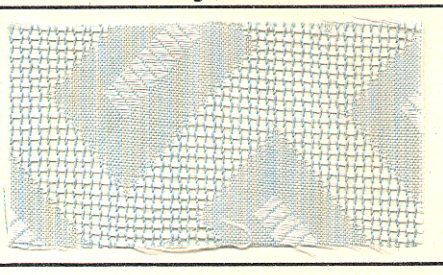


Fig. 5.

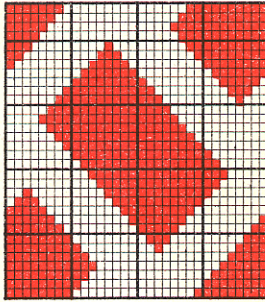


Fig. 6.

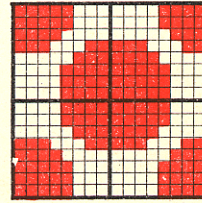


Fig. 7.

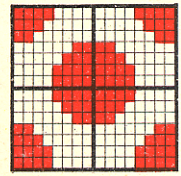


Fig. 3.

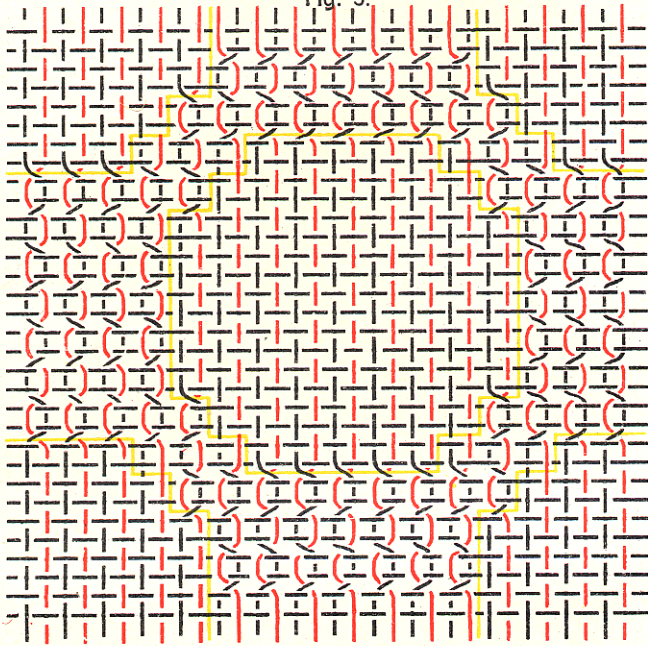


Fig. 4.

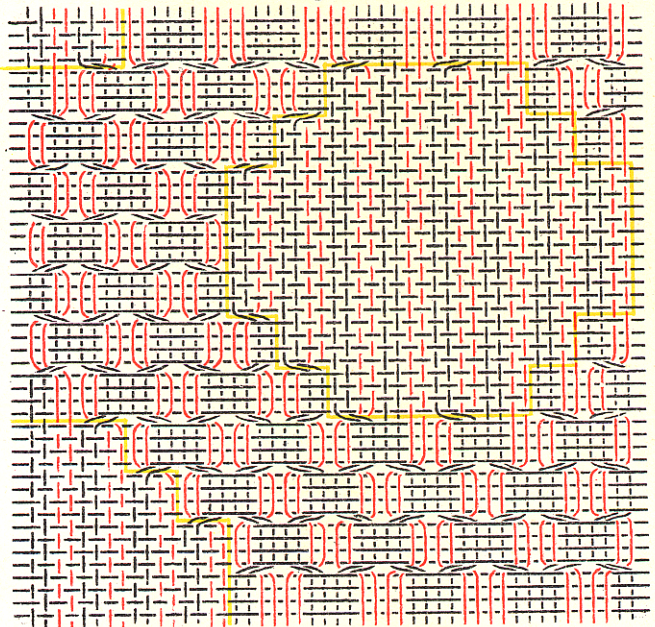


Fig. 2.

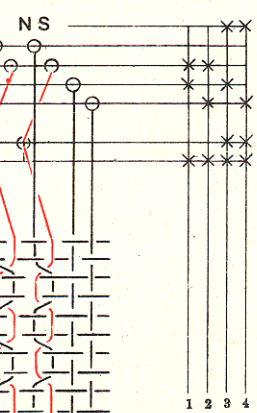


Fig. 8.

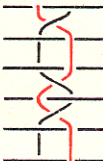


Fig. 9.

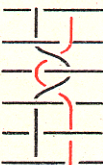


Fig. 10.

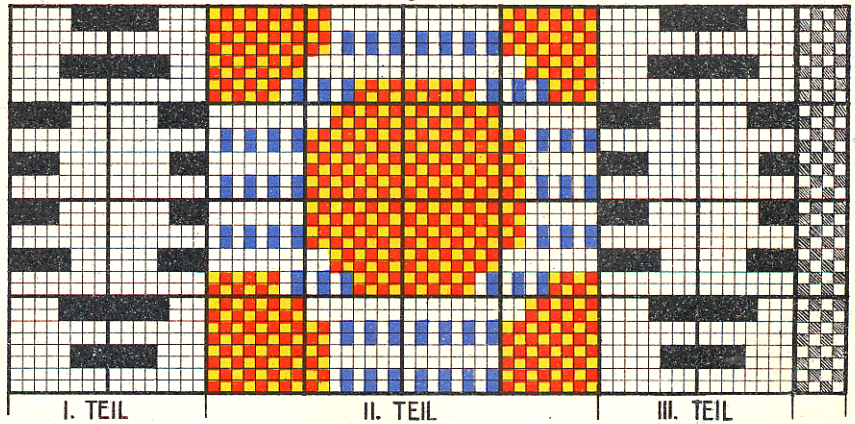
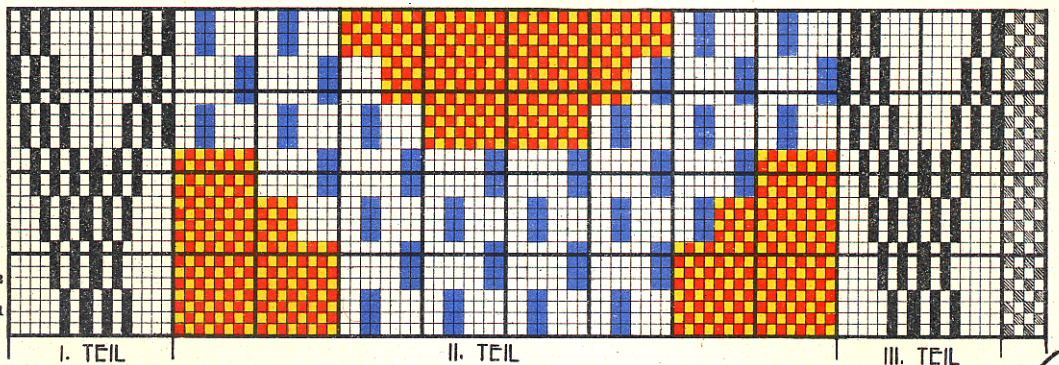
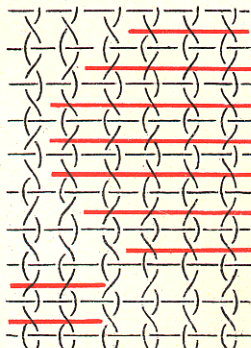


Fig. 12.



DREHER-VORRICHTUNG.

