



ATLAS
D'ARMURES
TEXTILES

PAR

B. PRESSINET 1901
Conservateur h. s. du
Musée des Tissus de
la ville de St Etienne

ARMURES CLASSIQUES



Taffetas



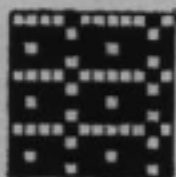
Luisant



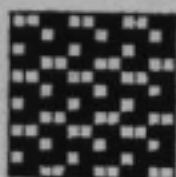
Royale



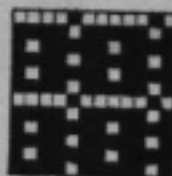
Taffetas avec lisère luisant



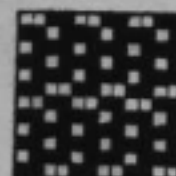
Cannelé avec toile



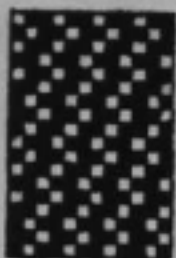
Cannelé avec toile



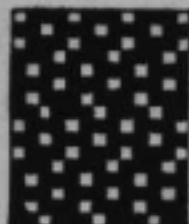
Cannelé avec toile



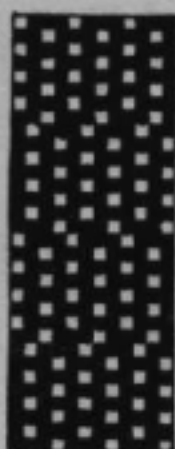
Cannelé avec toile



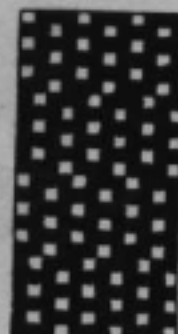
Ottoman
Cannelé sans toile



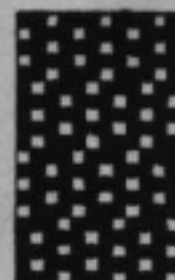
Cannelé sans toile



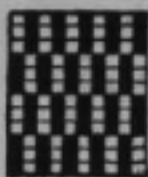
Cannelé sans toile



Cannelé sans toile



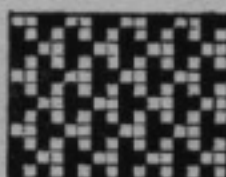
Cannelé



Cannelé simple



Cannelé double face avec toile

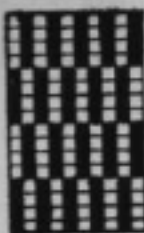


Cannelé double face sans toile

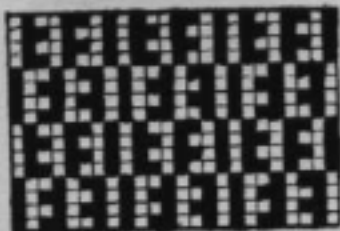


Cannelé (royale)

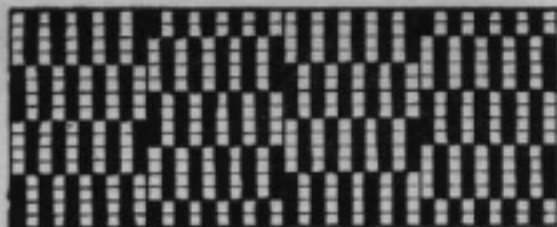
ARMURES CLASSIQUES



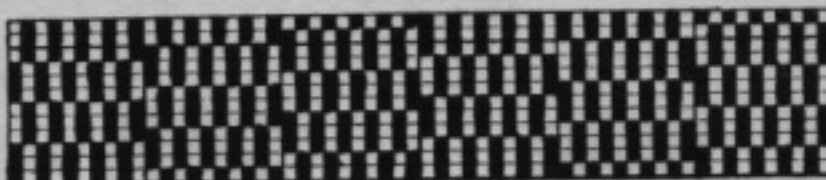
Cassé simple



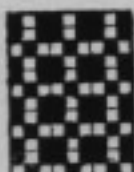
Cassé avec toit



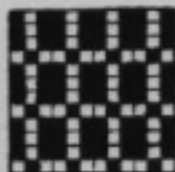
Cassé (royale)



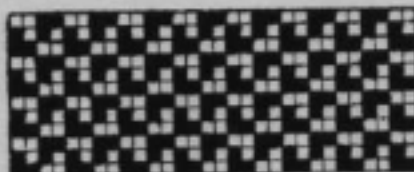
Cassé serge



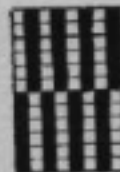
Simulac



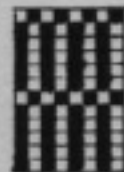
Simulac



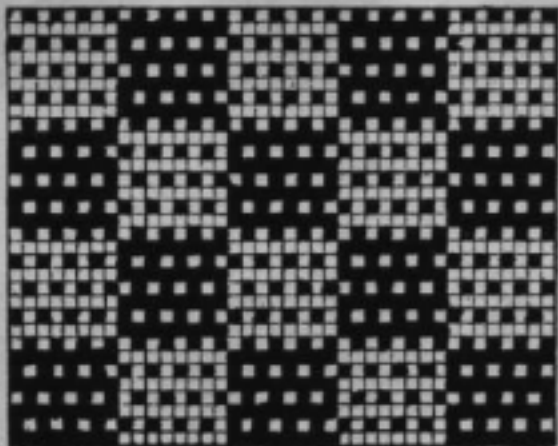
Ottoman sur côté tous les 3 coups



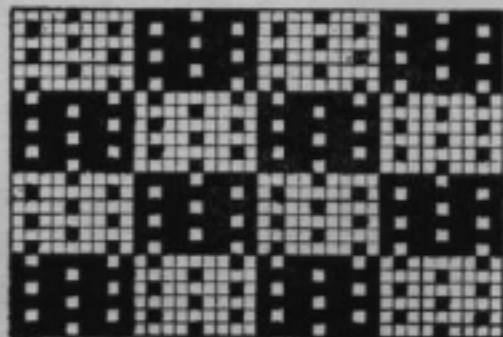
Cassé



Cassé



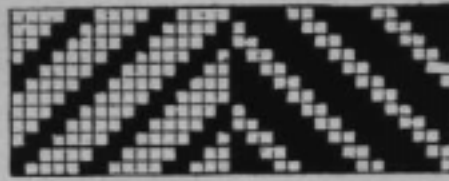
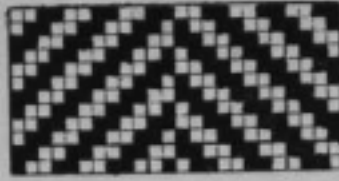
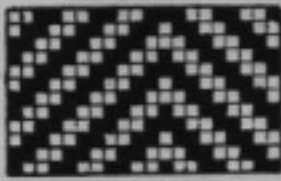
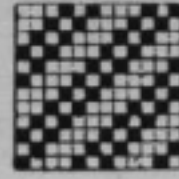
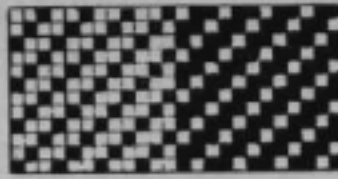
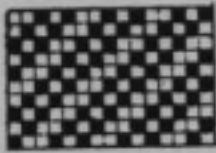
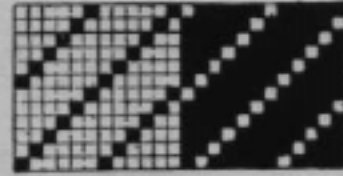
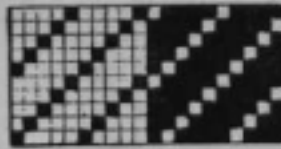
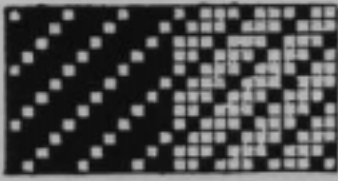
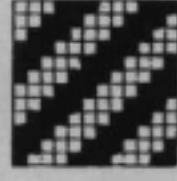
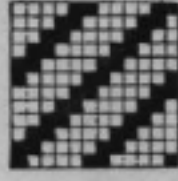
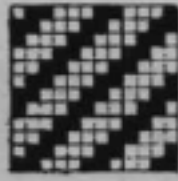
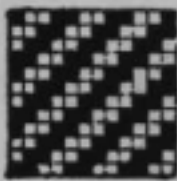
Nette par effet de trame



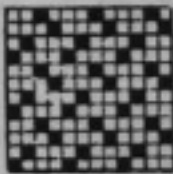
Nette par effet de chaîne

ARMURES CLASSIQUES

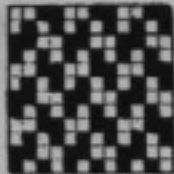
LES SERGÉS



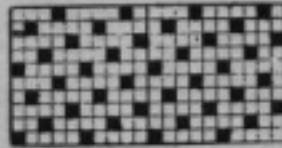
LES SATINS



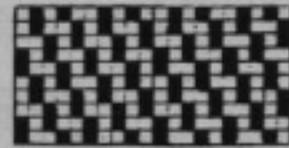
de 4



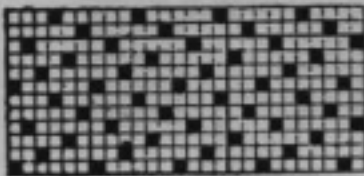
de 4



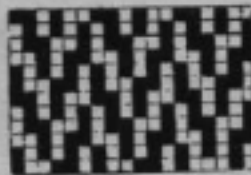
de 5



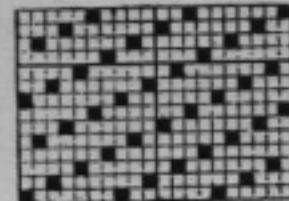
de 5



de 6



Satinette 3/3



de 7

ARMURES CLASSIQUES

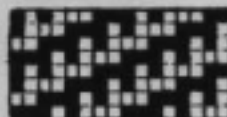
LES DOUBLE-FACE PAR 2 CHAINES



Sergé 2/1



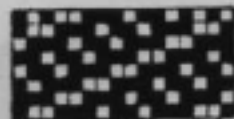
Sergé 2/1



Sergé 3/1



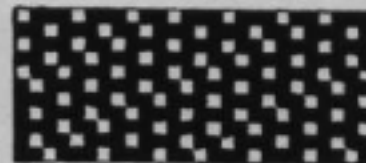
Sergé 3/1



Sergé envers toile



Sergé envers toile



Sergé 2 chaines



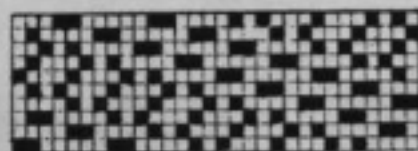
Satin 5 lisses



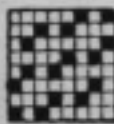
Satin 8 lisses réduit à 8 lisses
s'emploie pour filets ou bandes étroites



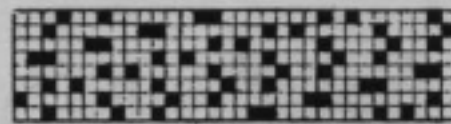
Satin 8 lisses double face ordinaire



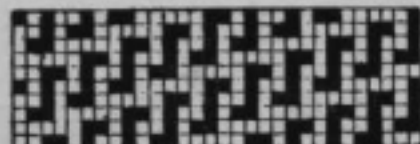
Satin envers faille



Satin à double liage
Veloers au sabre



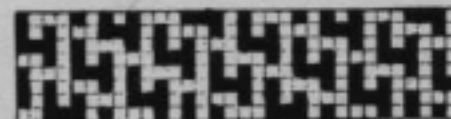
Satin entrelacé



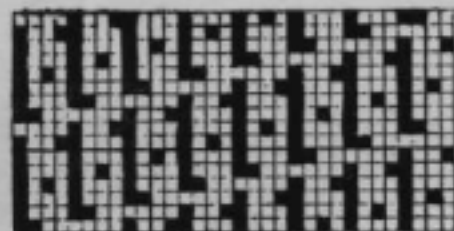
Sergé envers satin



Satinette 4/4



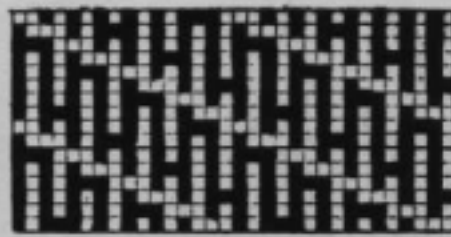
Sergé envers satin



Sergé envers satin



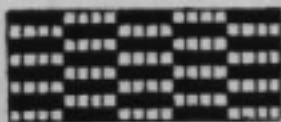
Satinette 8/8
pour filets ou bandes étroites



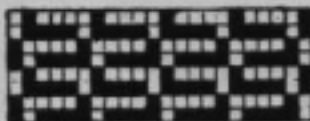
Sergé envers satin

ARMURES CLASSIQUES

LES REPS



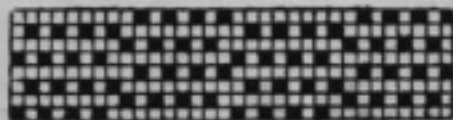
Romale ou bayadère



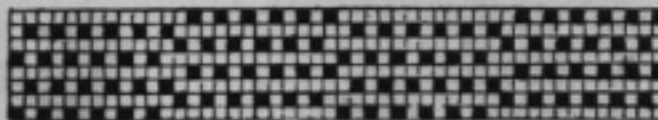
Reps boyeux avec 2 fils de liages



Reps boyeux avec 4 fils de liages



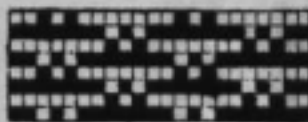
Reps une rayure tous les 8 fils



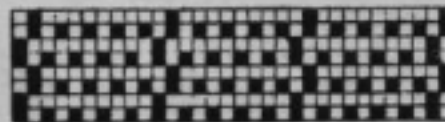
Reps une rayure tous les 12 fils



Reps une rayure tous les 6 fils



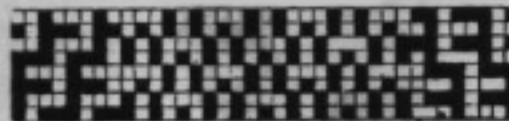
Reps dit Satin des tissus élastiques



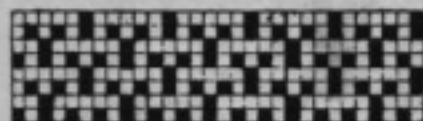
Reps par 10 fils



Reps satin armure de montage avec lisière ronde
2 navettes



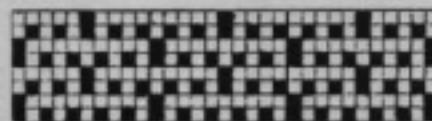
Reps satin armure de montage avec lisière perlée
une navette



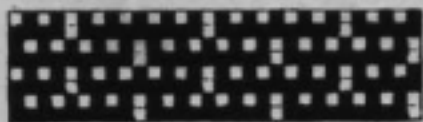
Reps satin armure de montage par 6 fils



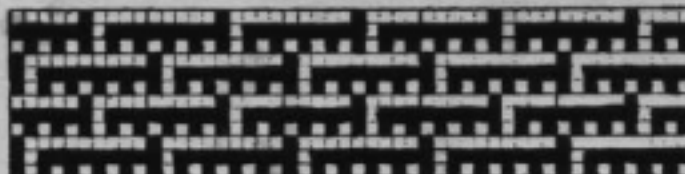
Reps des tissus élastiques



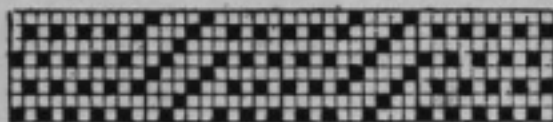
Reps satin armure de montage par 10 fils (simple face)



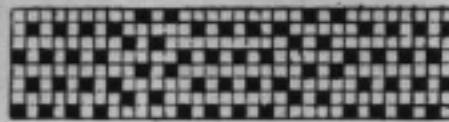
Reps satin armure de montage par 10 fils



Reps satin armure de montage par 10 fils (double face)



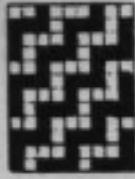
Armure de tissu dit tricotée



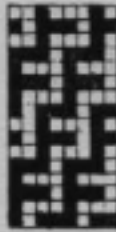
Armure de tissu dit tricotée

ARMURES CLASSIQUES

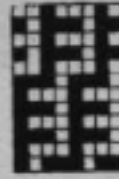
TISSUS TUBULAIRES



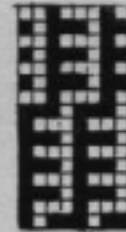
Taffetas



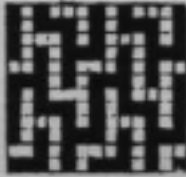
Luisant



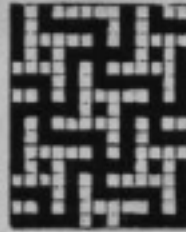
Cannelé 3/3



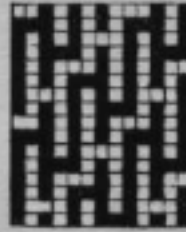
Cannelé 4/4



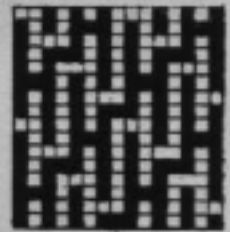
Sergé 2/2



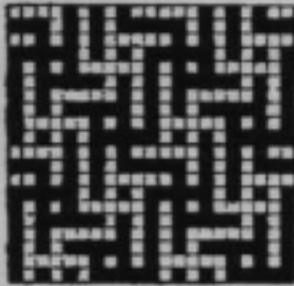
Sergé 2/2



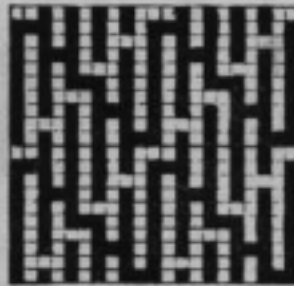
Sergé 3/1



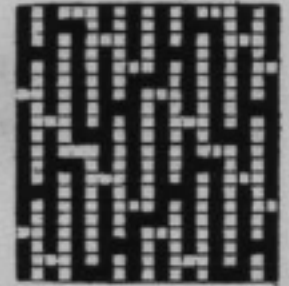
Sergé 3/1



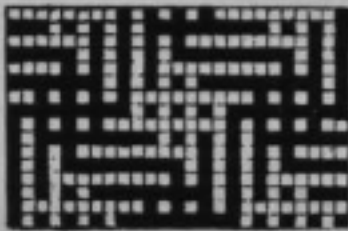
Sergé 3/2



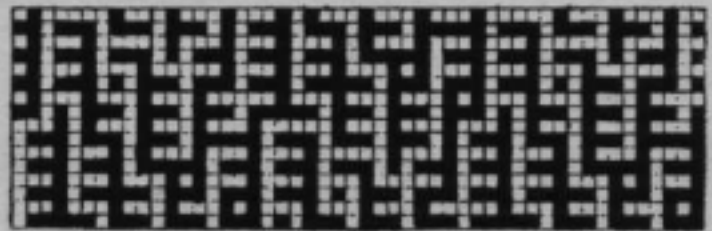
Sergé 4/1



Sergé 4/1



Sergé 4/4



Sergé 4/4 par 2 chaînes



Satin 5 lisses



Satin 8 lisses

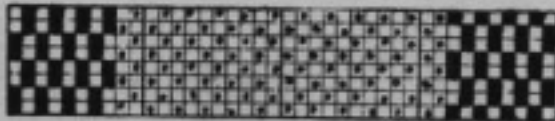


Satin 8 lisses

B. PRESSIET

ARMURES CLASSIQUES

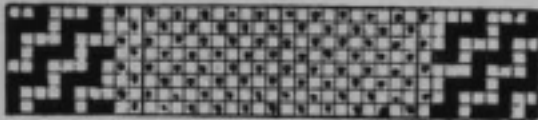
LES LISIÈRES



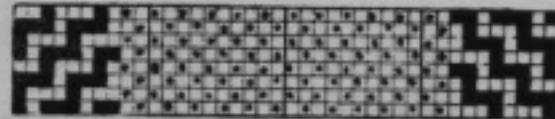
Lisart



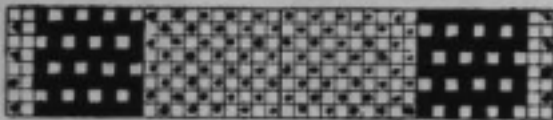
Beyaux



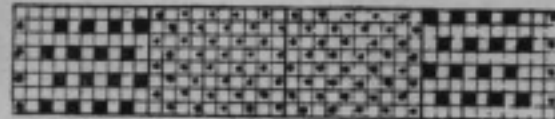
Ronde même pas des deux côtés 4 lisses



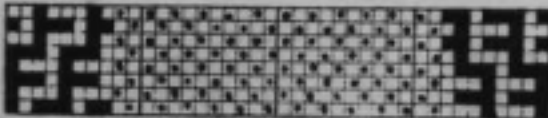
Ronde chassette 6 lisses



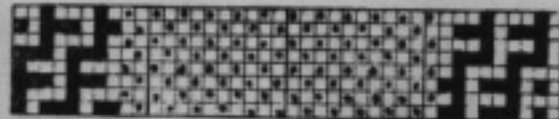
Ronde simple face avec 1 fil d'âme bon côté en-dessus



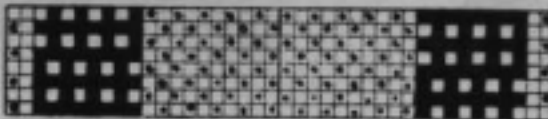
Ronde simple face avec 1 fil d'âme bon côté en-dessous



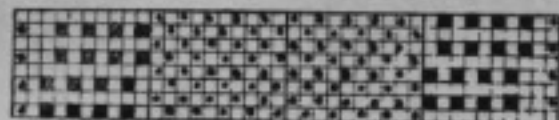
Perlé chassette



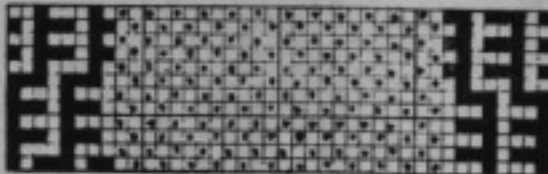
Perlé même pas des deux côtés (bordé biais) 6 lisses



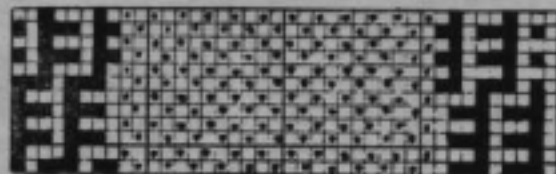
Perlé simple face bon côté dessus



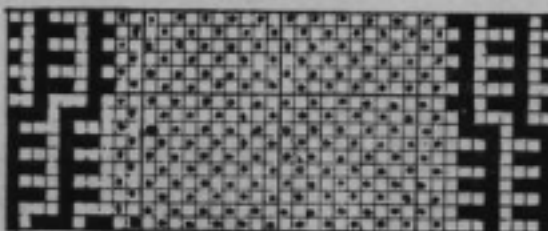
Perlé simple face bon côté dessous



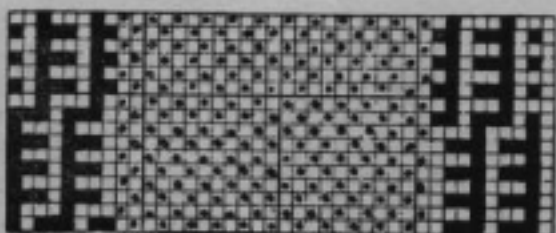
Perlé par 12 coups chassette



Perlé par 12 coups 6 lisses



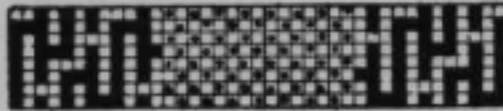
Perlé par 16 coups chassette



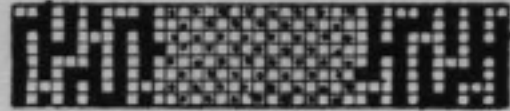
Perlé par 16 coups 6 lisses

ARMURES CLASSIQUES

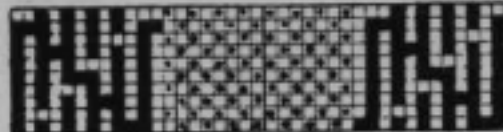
LES LISIÈRES TUBULAIRES



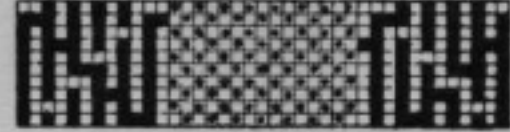
Sergé 2/1 diagonales dans le même sens



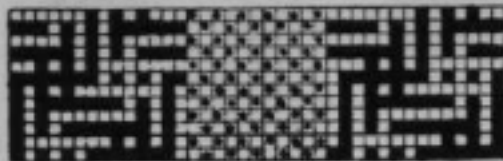
Sergé 2/1 diagonales en sens inverse



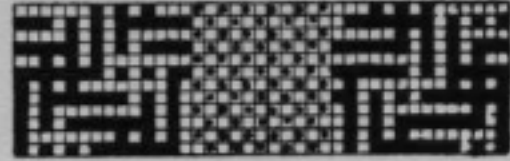
Sergé 4/1 diagonales dans le même sens



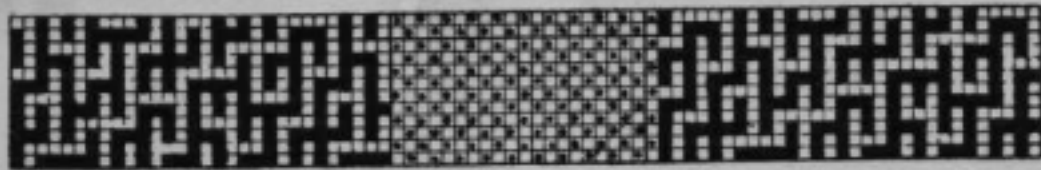
Sergé 4/1 diagonales en sens inverse



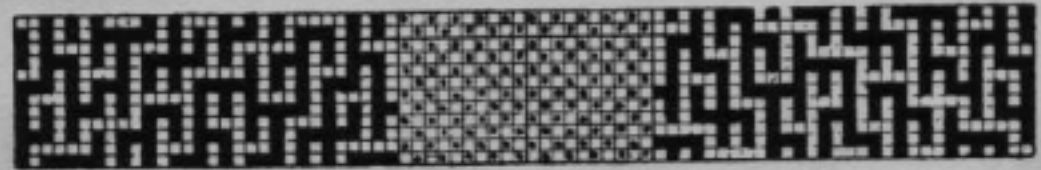
Sergé 3/3 diagonales dans le même sens



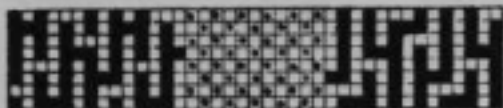
Sergé 3/3 diagonales en sens inverse



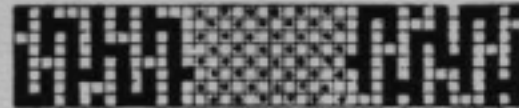
Sergé 3/3 deux couleurs diagonales dans le même sens



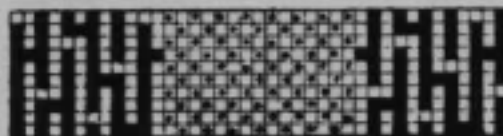
Sergé 3/3 deux couleurs diagonales en sens inverse



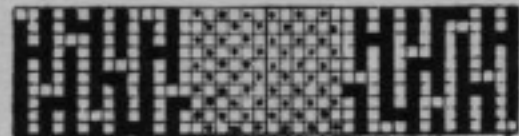
Satin 4 lisses



Satin 4 lisses chassés

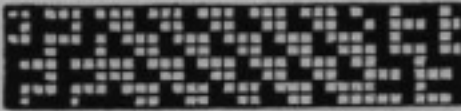


Satin 5 lisses même pas des deux côtés

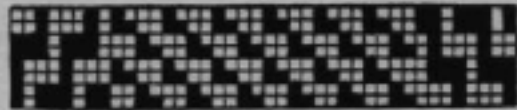


Satin 5 lisses chassés

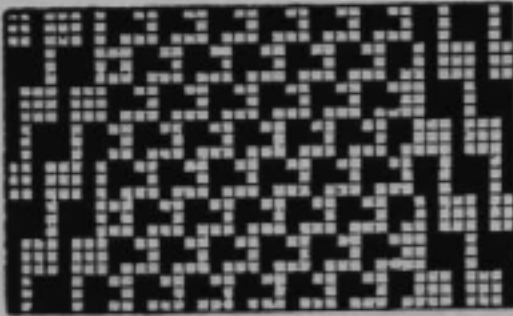
ARMURES CLASSIQUES



Taffetas bicolors par 1 navette



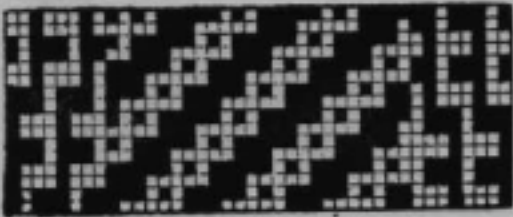
Taffetas bicolors par 2 navettes



Taffetas bicolors par 3 navettes



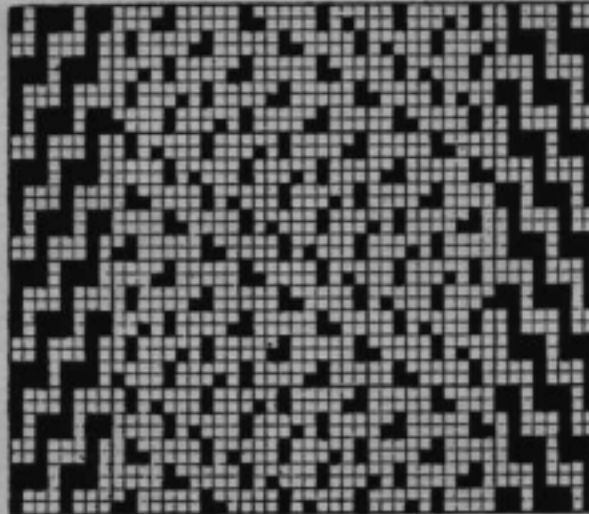
Satin 5 lisses bicolors par 3 navettes



Sergé 2/2 bicolors par 2 navettes

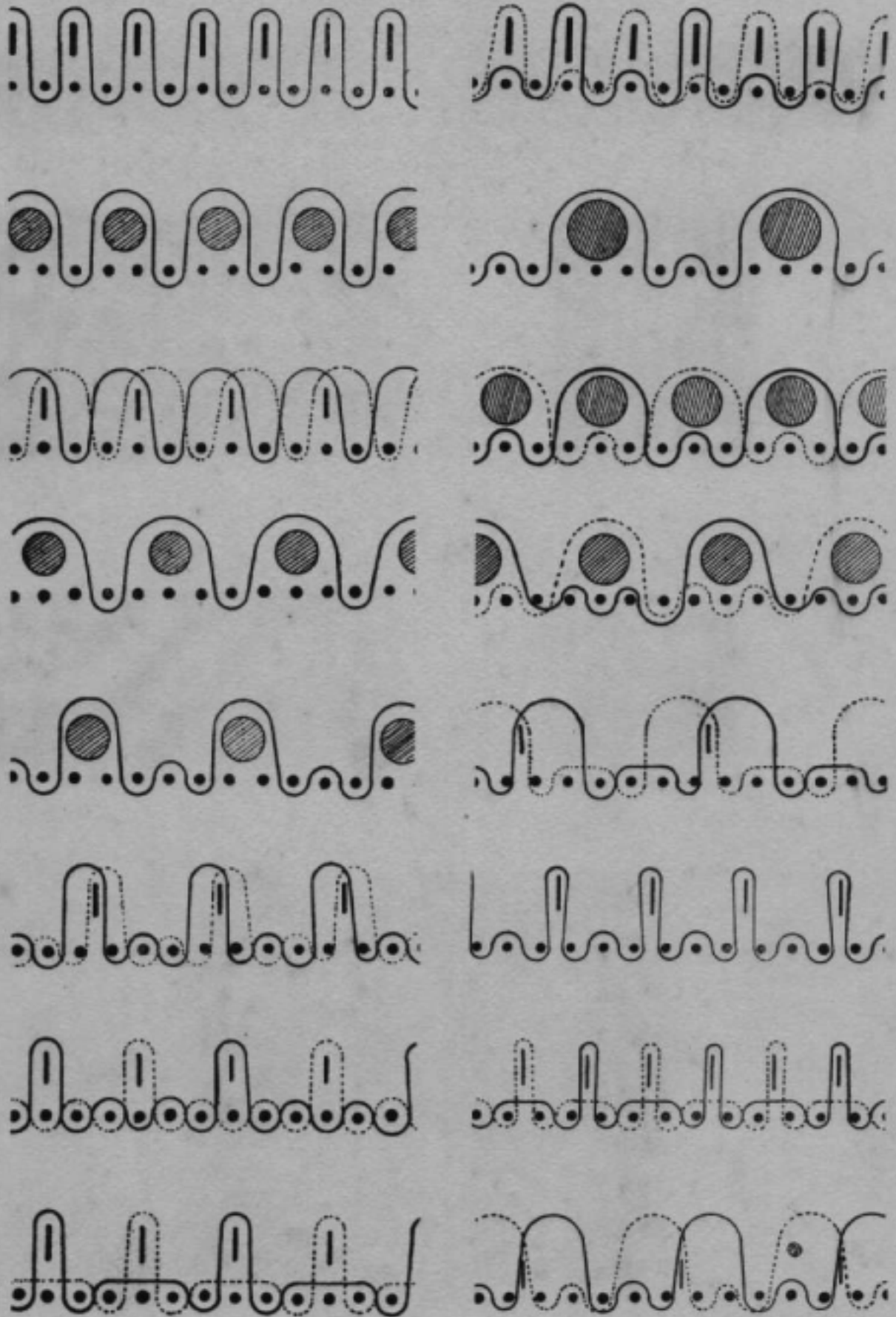


Satin 5 lisses bicolors par 3 navettes



Satin envers toile par 2 navettes

ARMURES DE VELOURS A L'ÉPINGLE ET D'ÉPINGLES BOUCLÉES
TRAVAIL DES FILS DE POIL

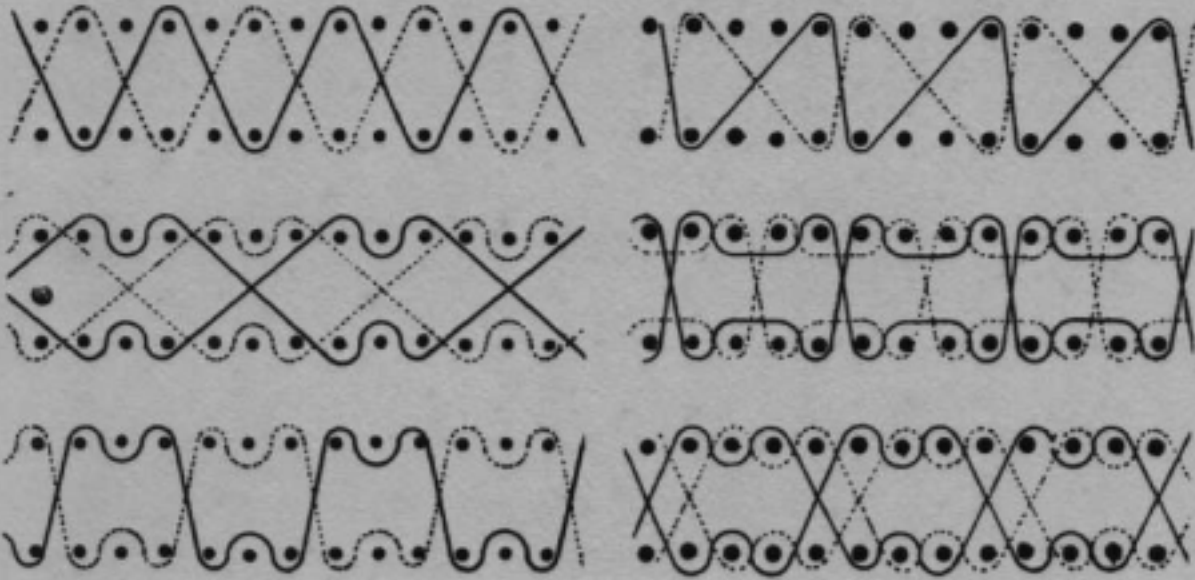


B. PRESSINET

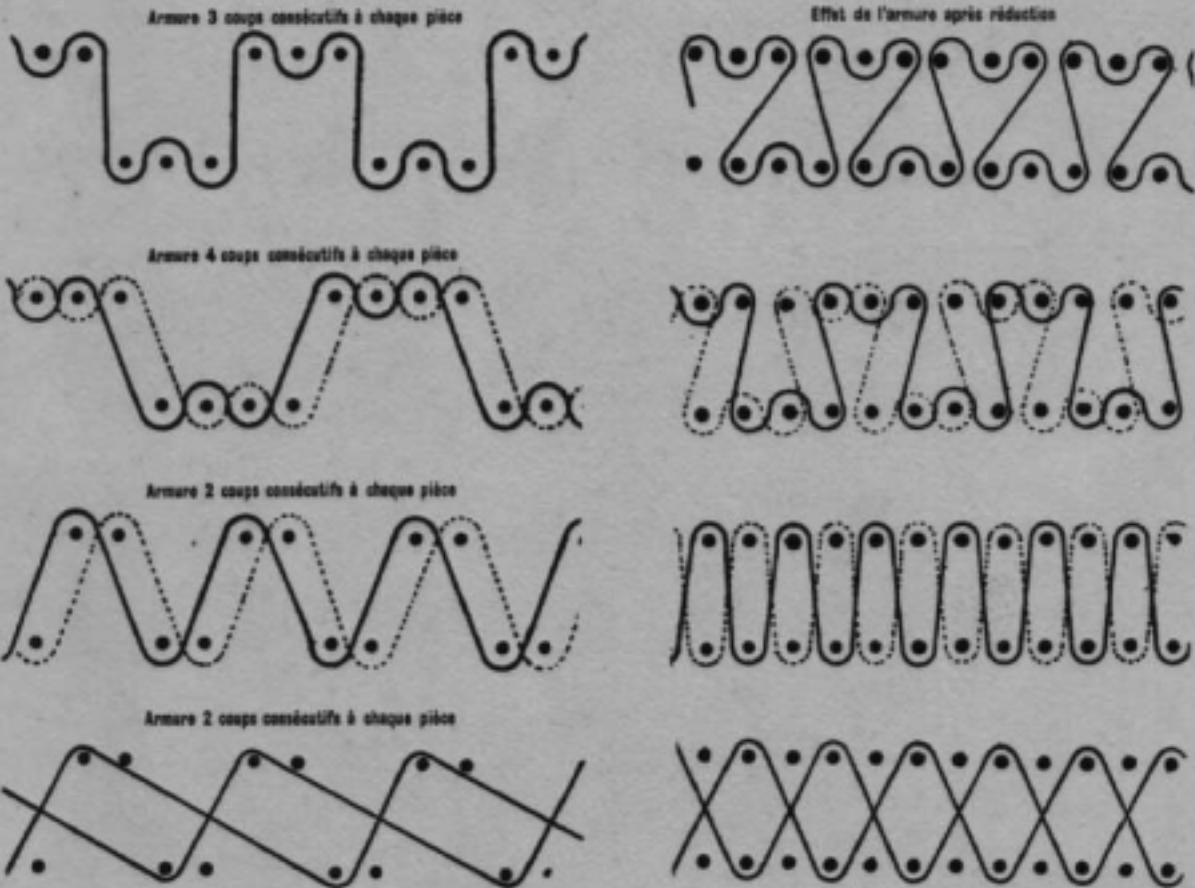
VELOURS DOUBLE PIÈCE

TRAVAIL DES FILS DE POIL

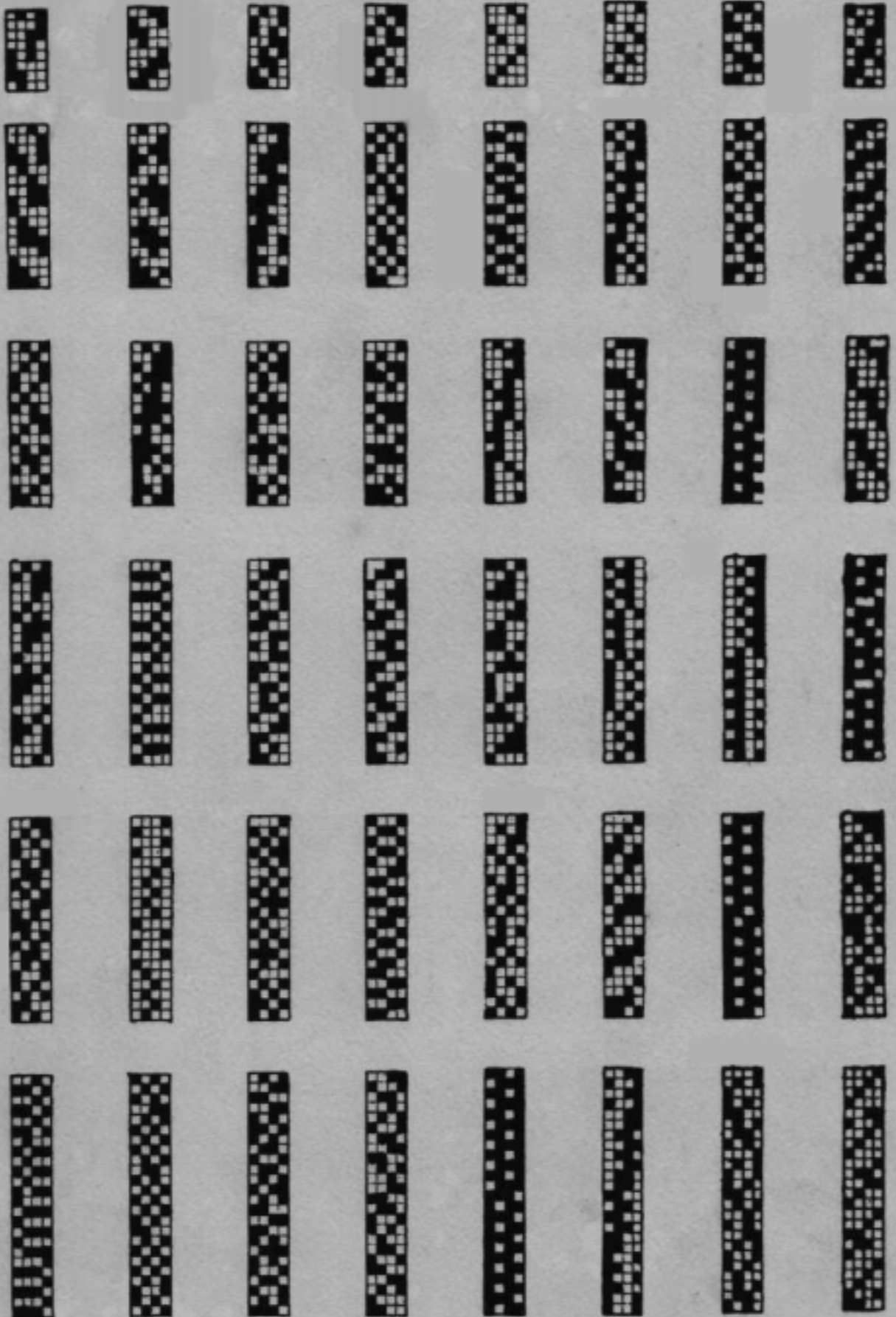
Les 2 navettes passent simultanément

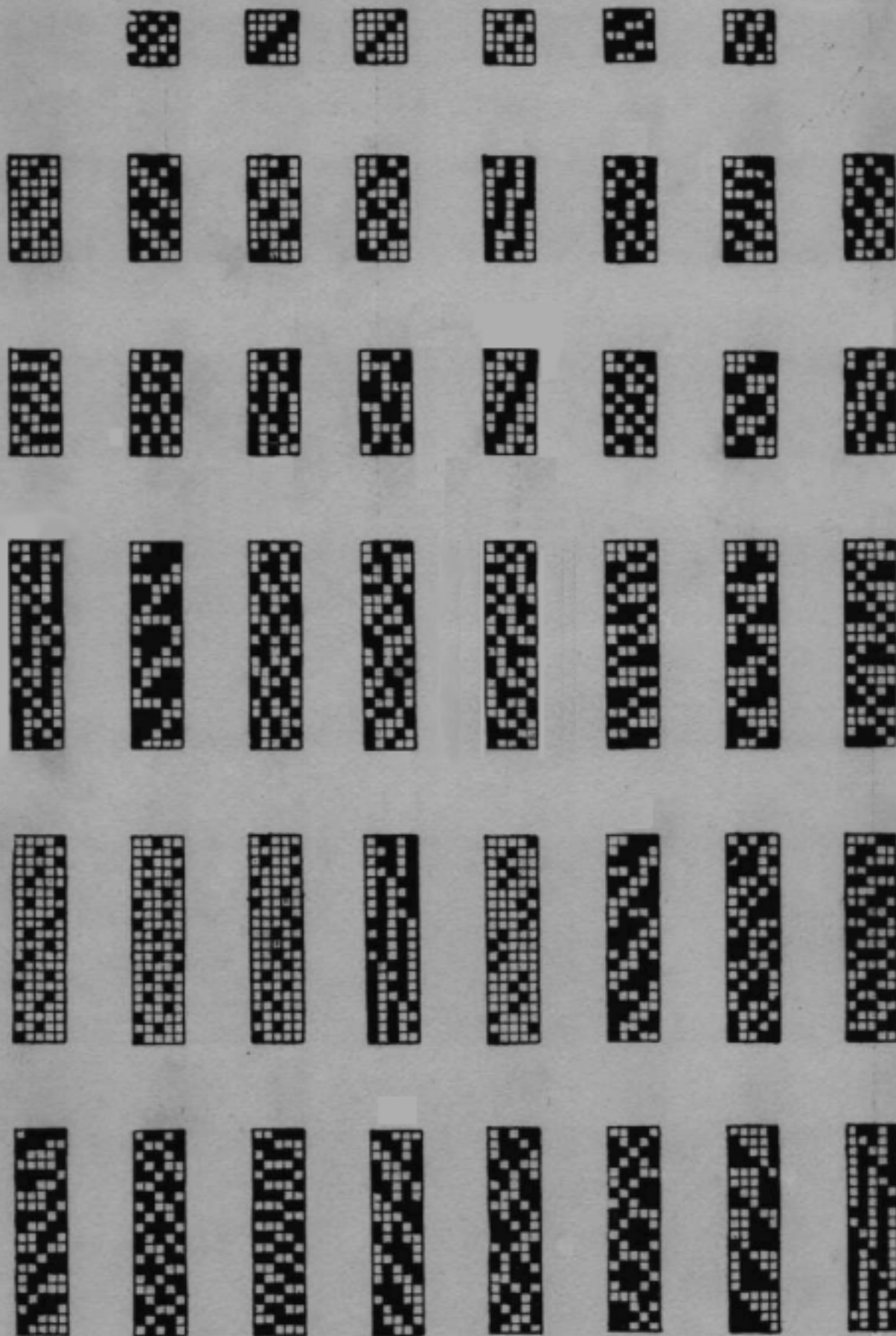


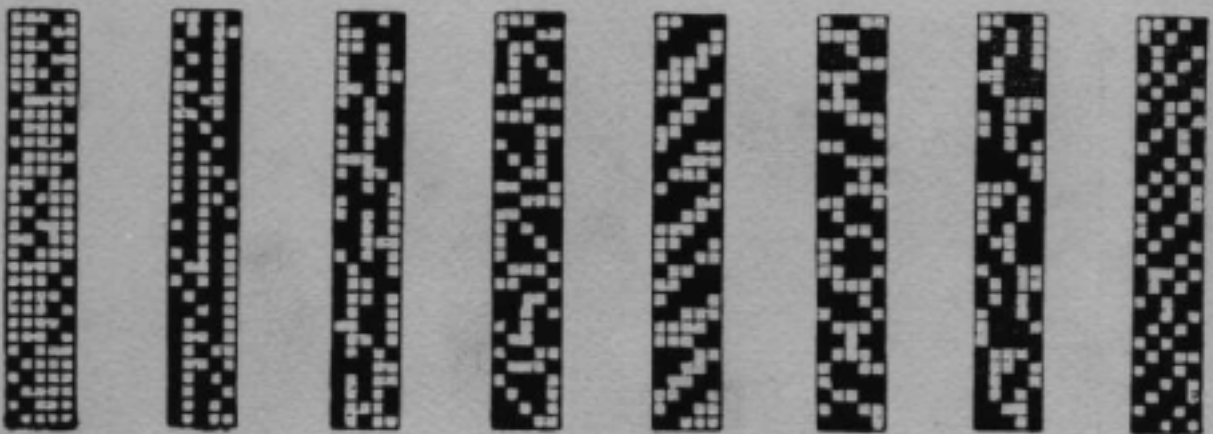
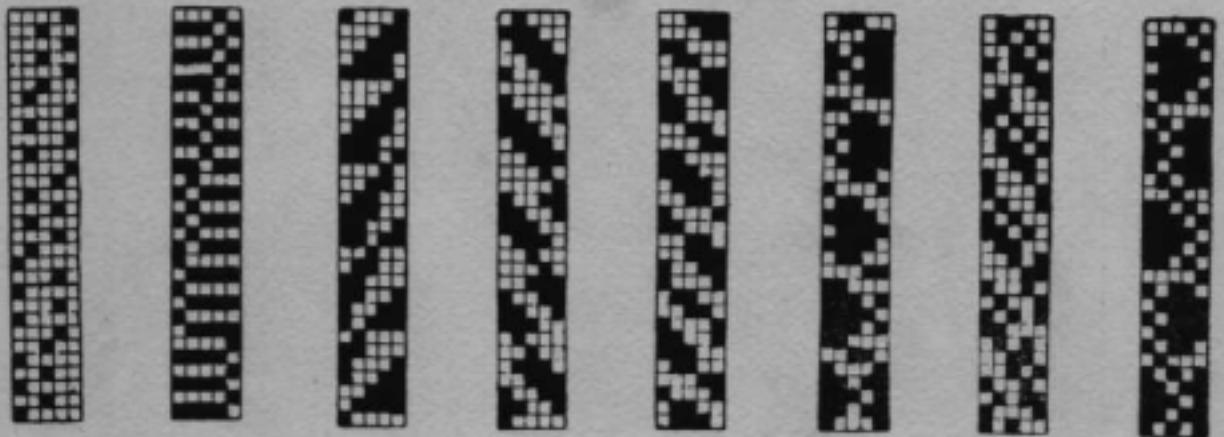
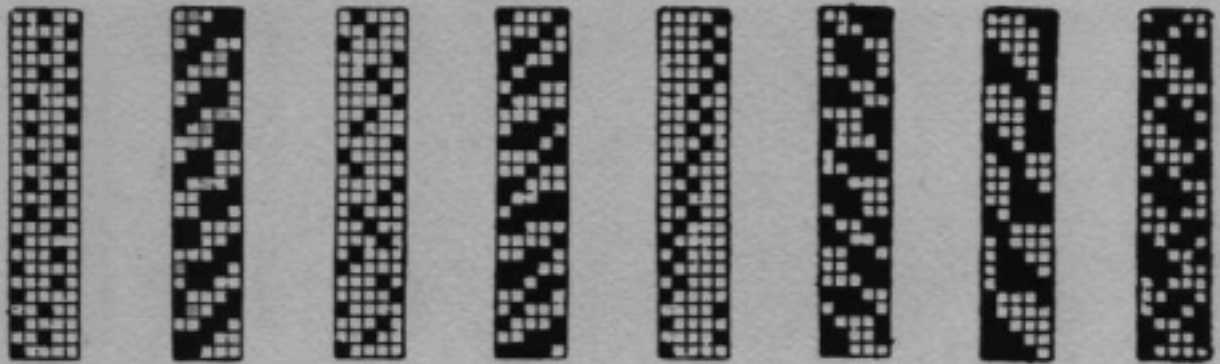
La navette trame alternativement les 2 pièces



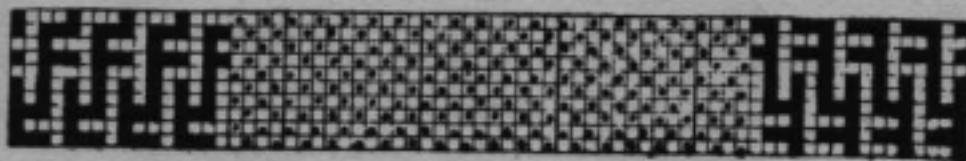
D. PRESSINET

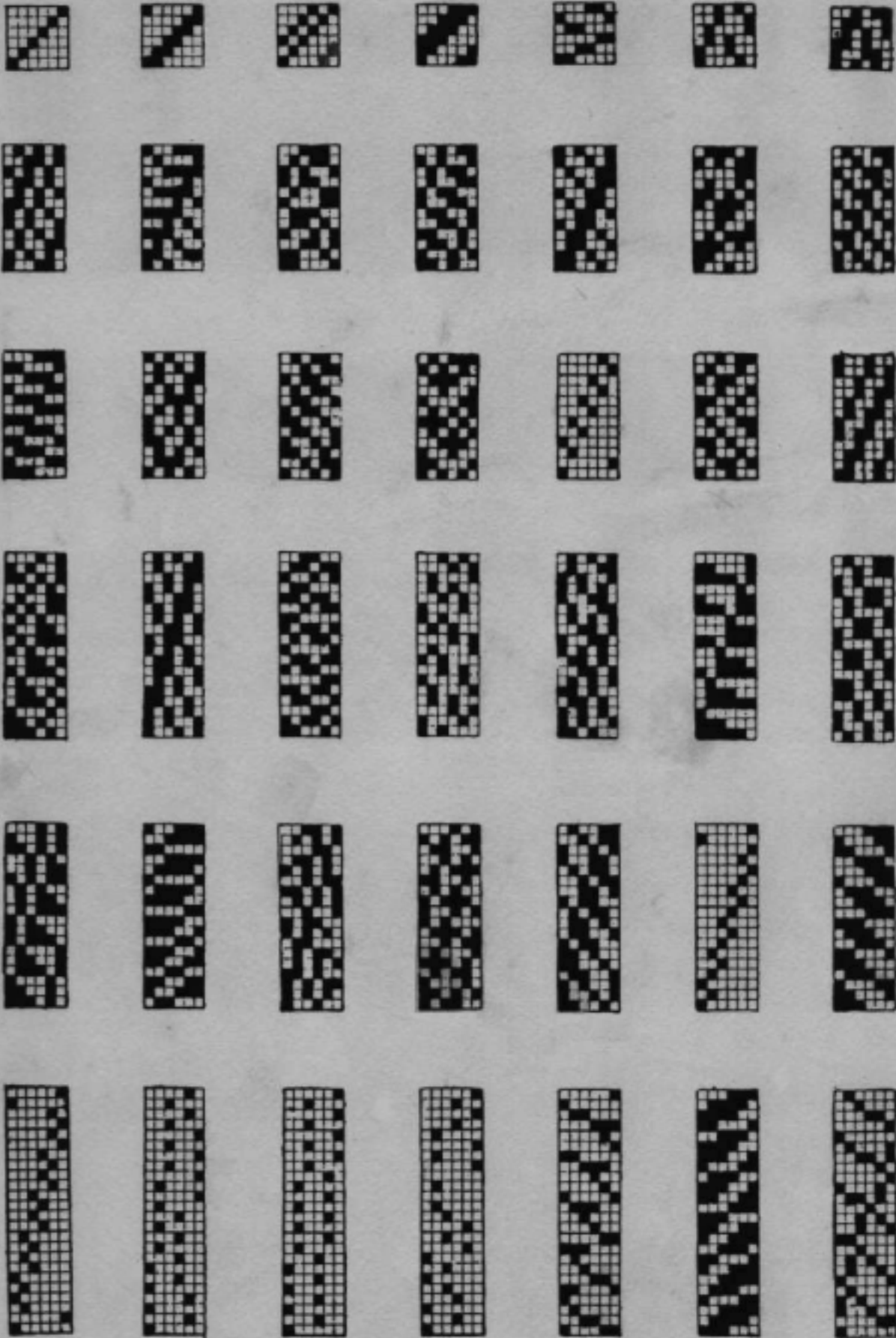






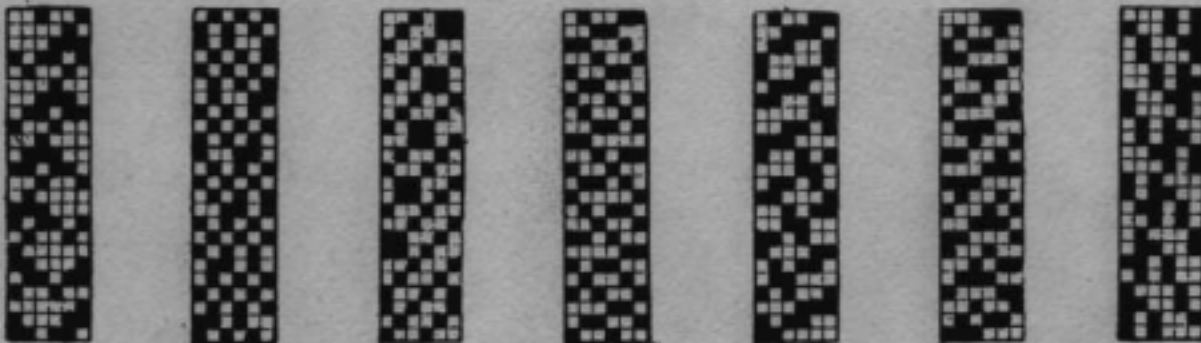
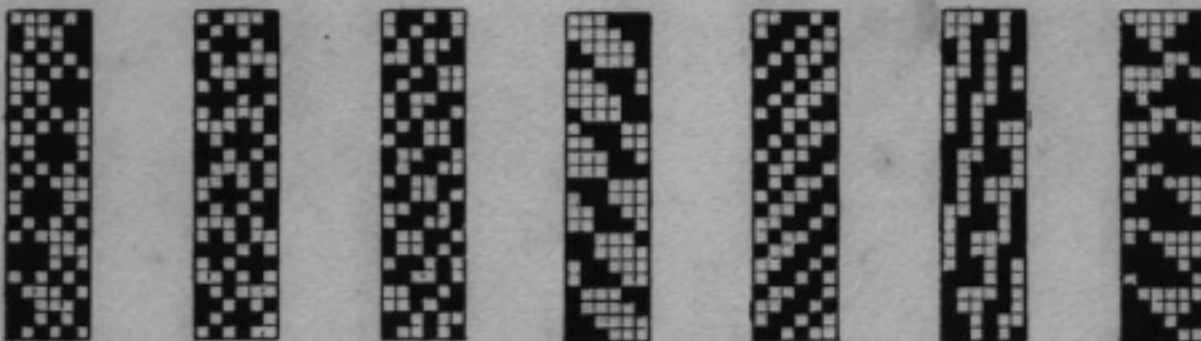
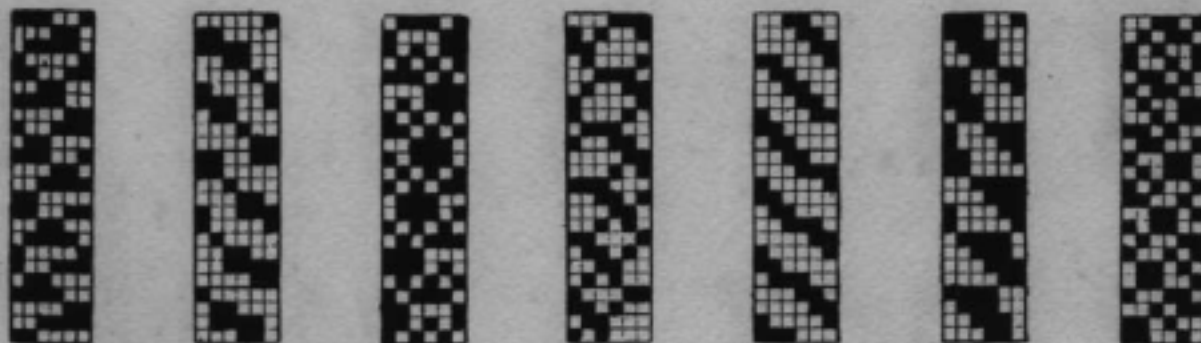
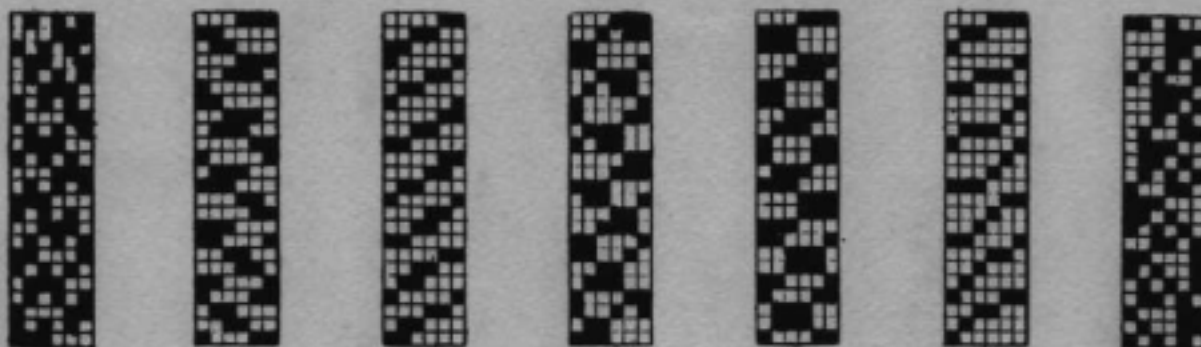
Lisière perlée par 10 coups

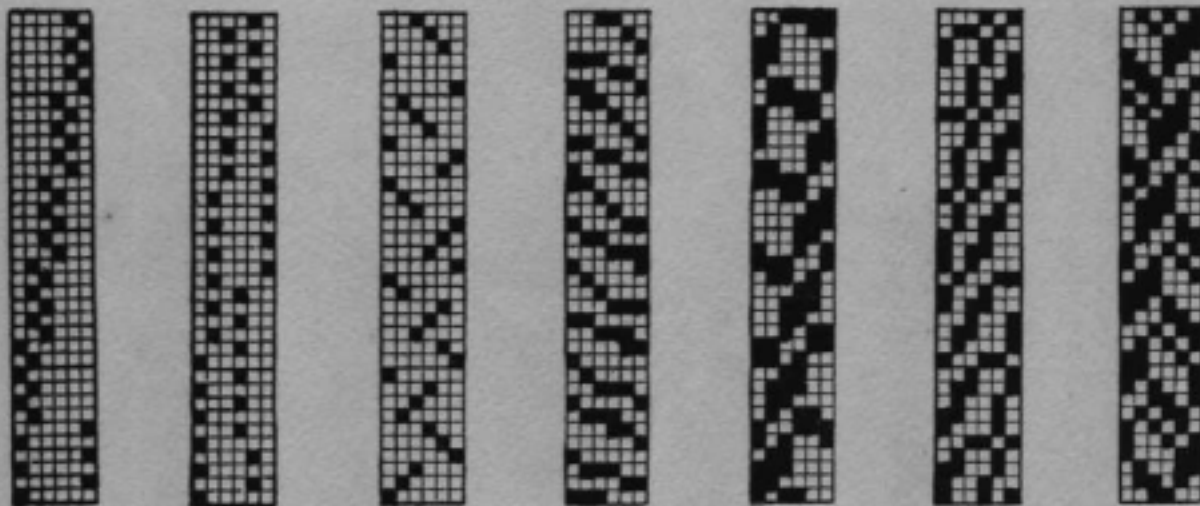
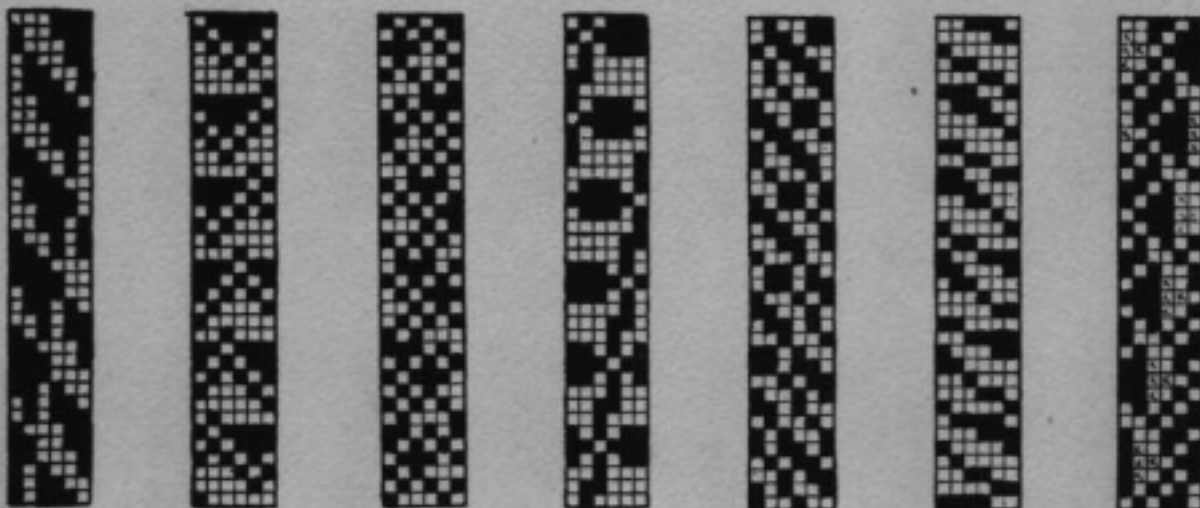
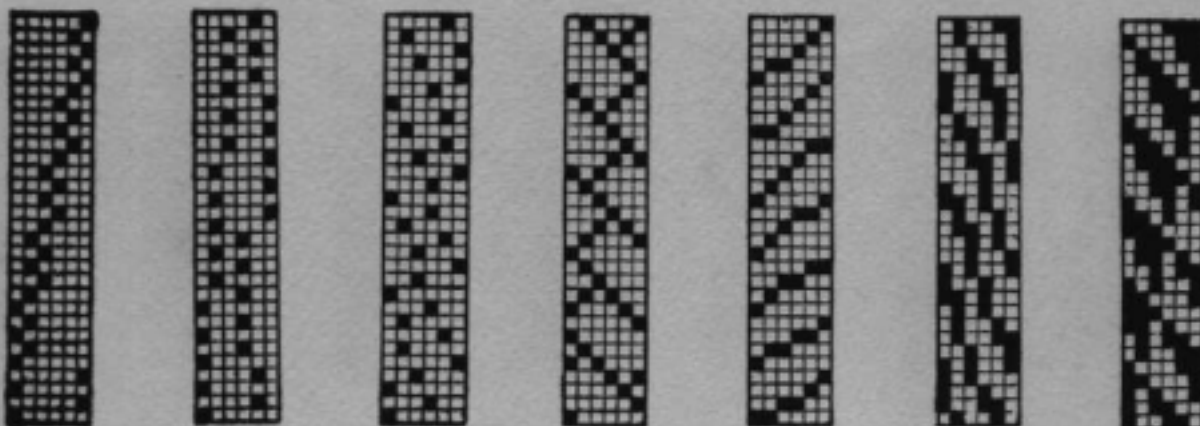


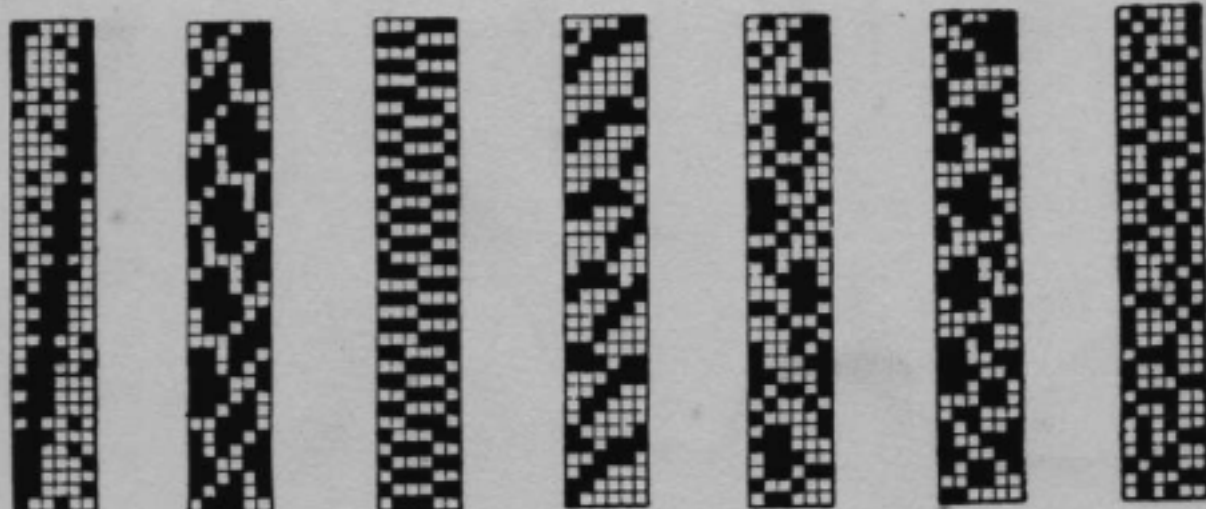
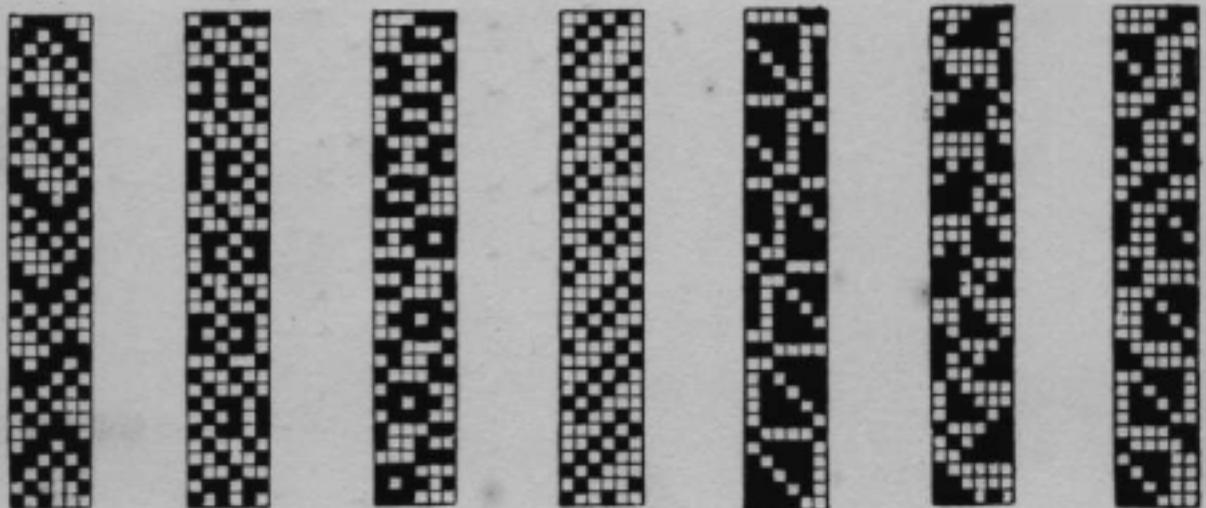
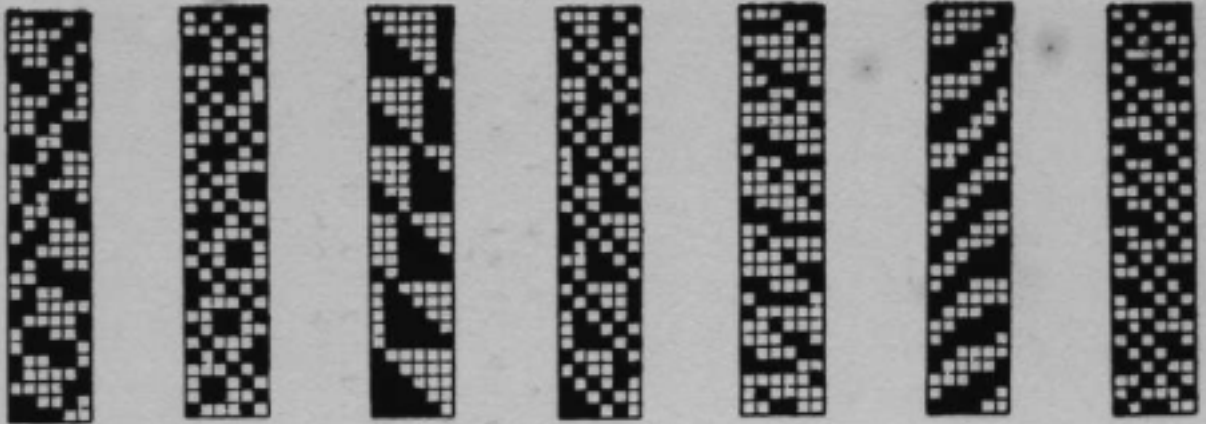


D. PRODHOMET

ARMURES SUR 6 FILS 24 COUPS

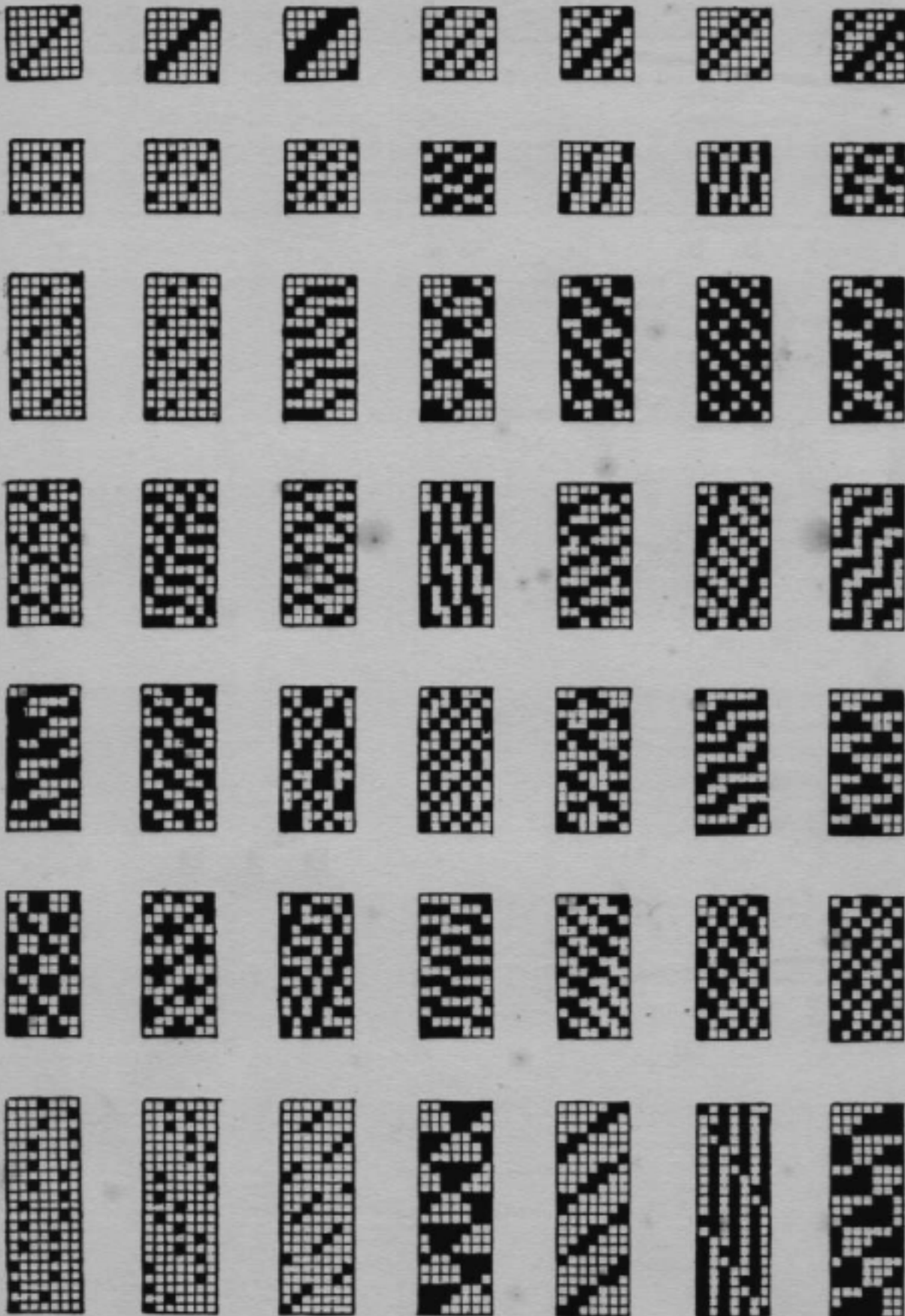




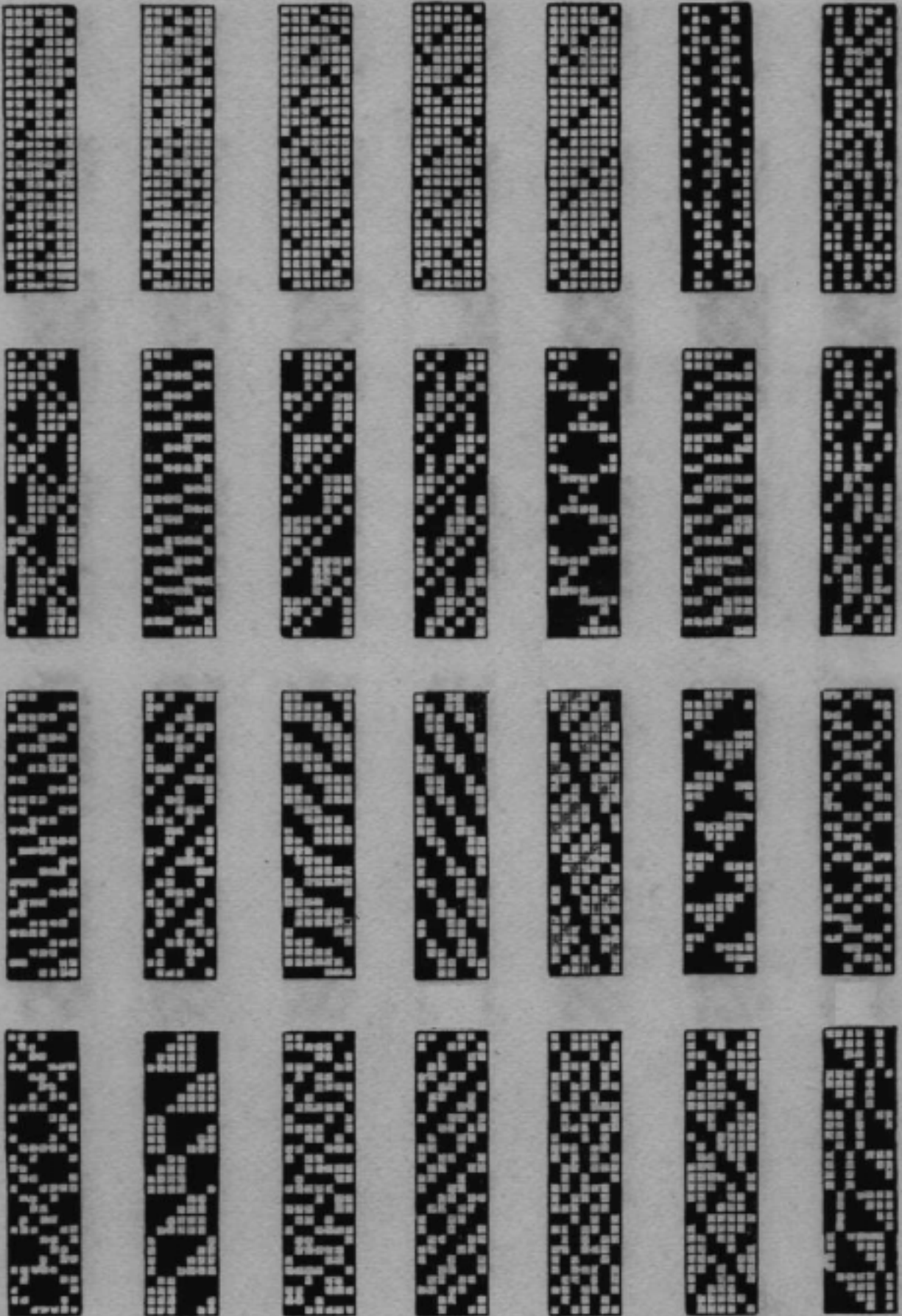


ARMURES CLASSIQUES & FANTAISIE SUR 7 FILS

7-14-21 COUPS

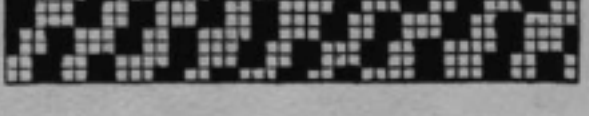
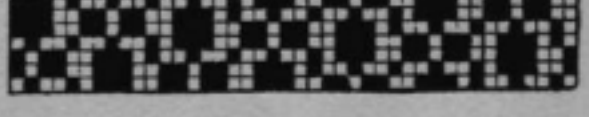
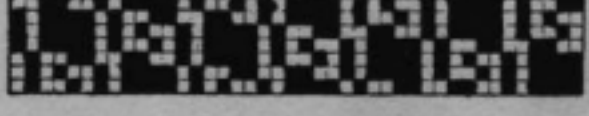
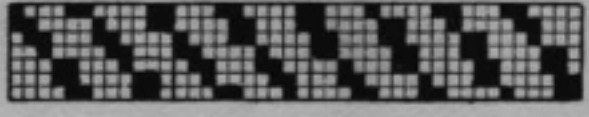
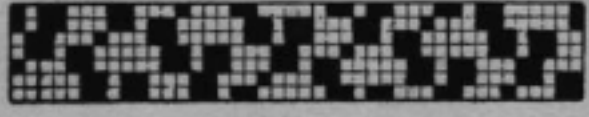
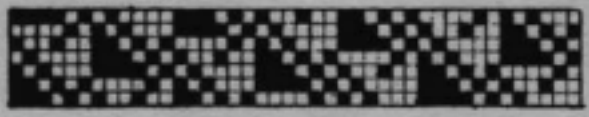


ARMURES SUR 7 FILS 28 COUPS



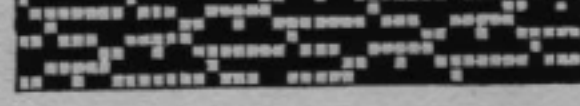
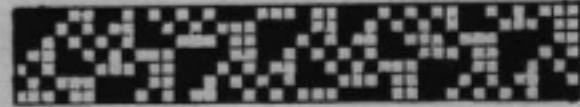
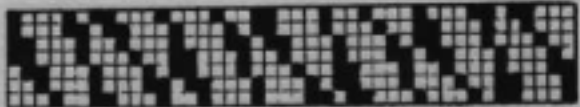
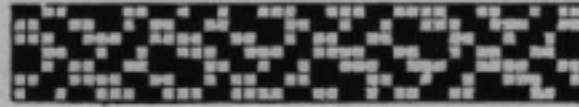
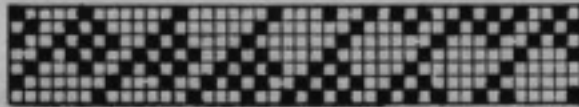
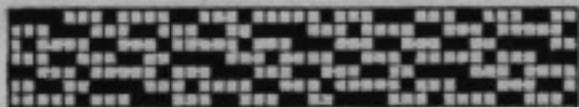
B. PRESSIRET

ARMURES SUR 7 FILS 42 COUPS

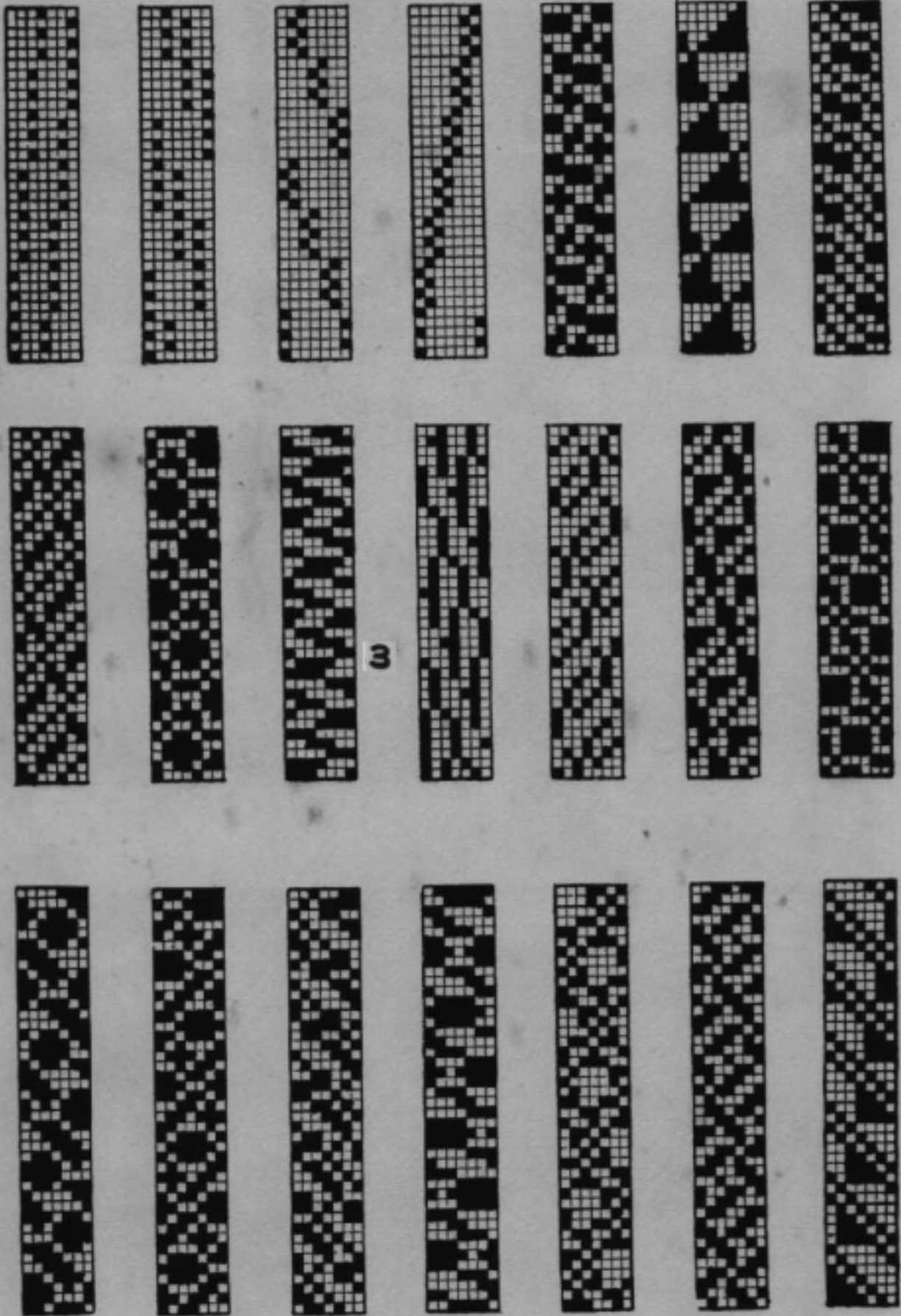


6 PRESSINET

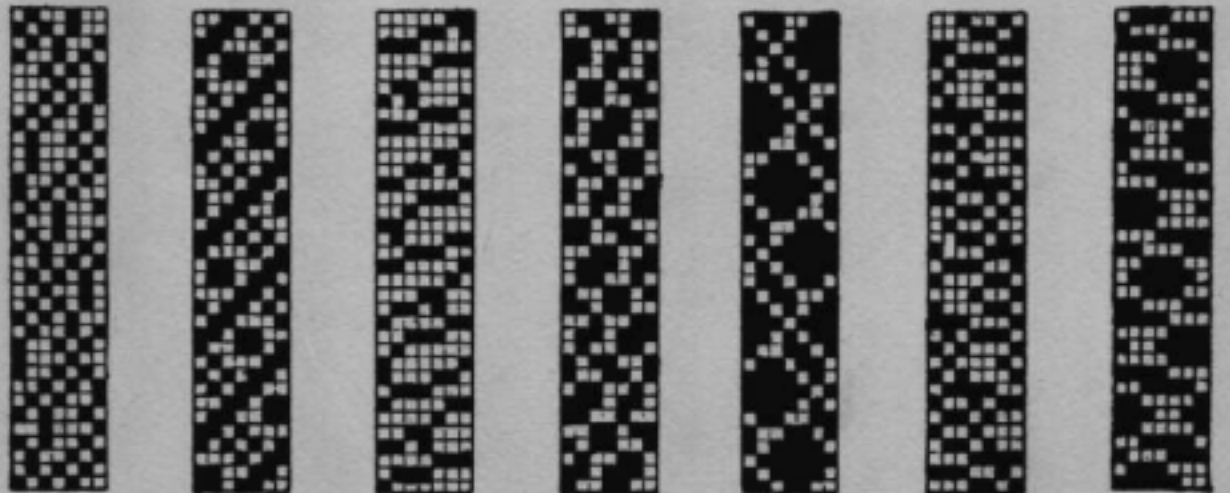
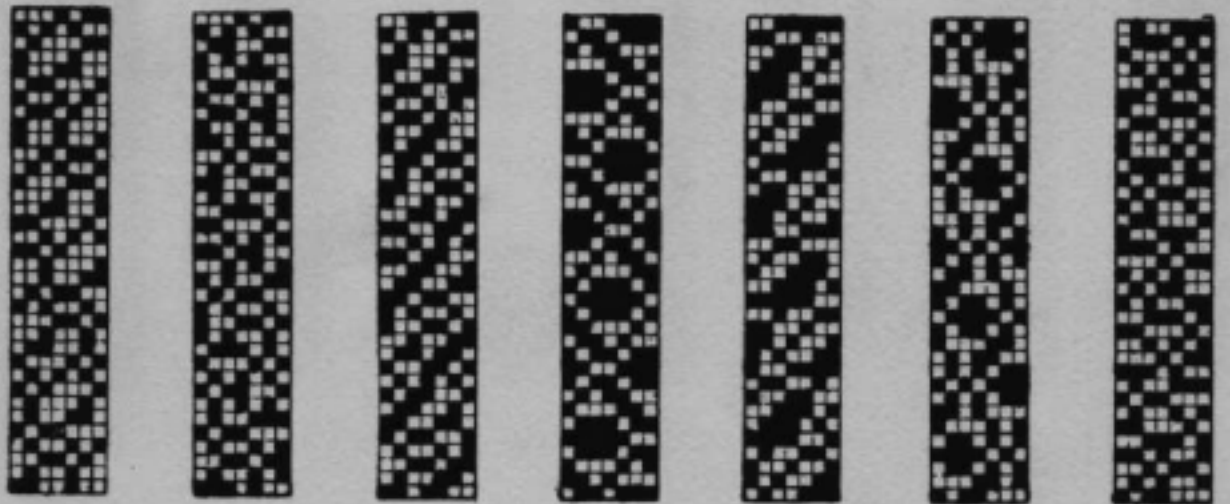
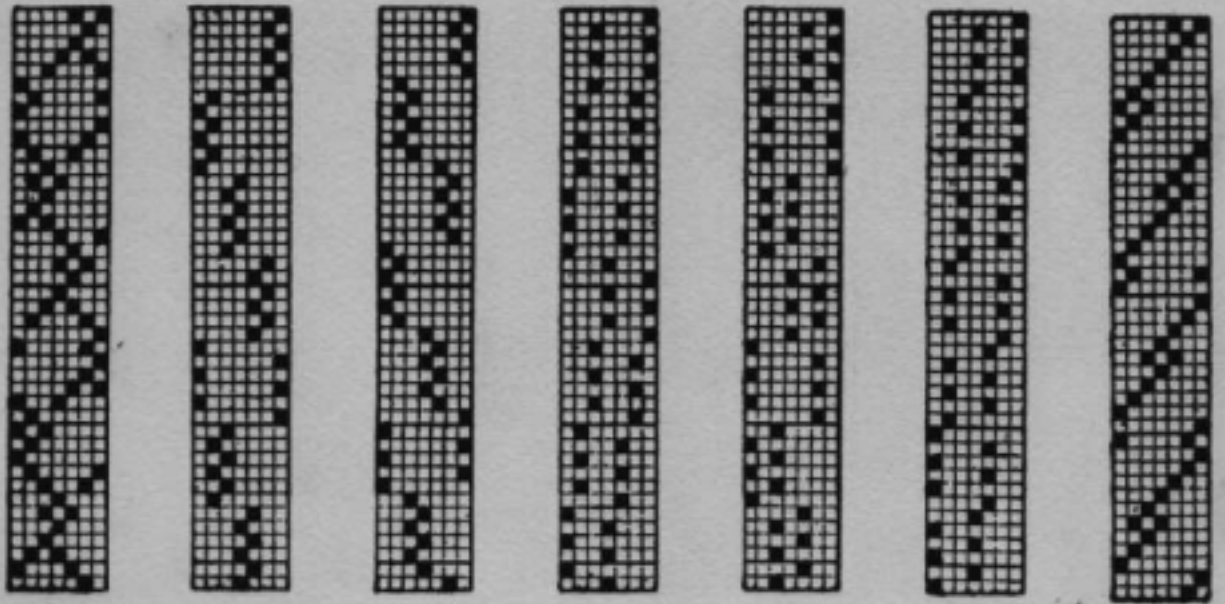
ARMURES SUR 7 FILS 42 COUPS



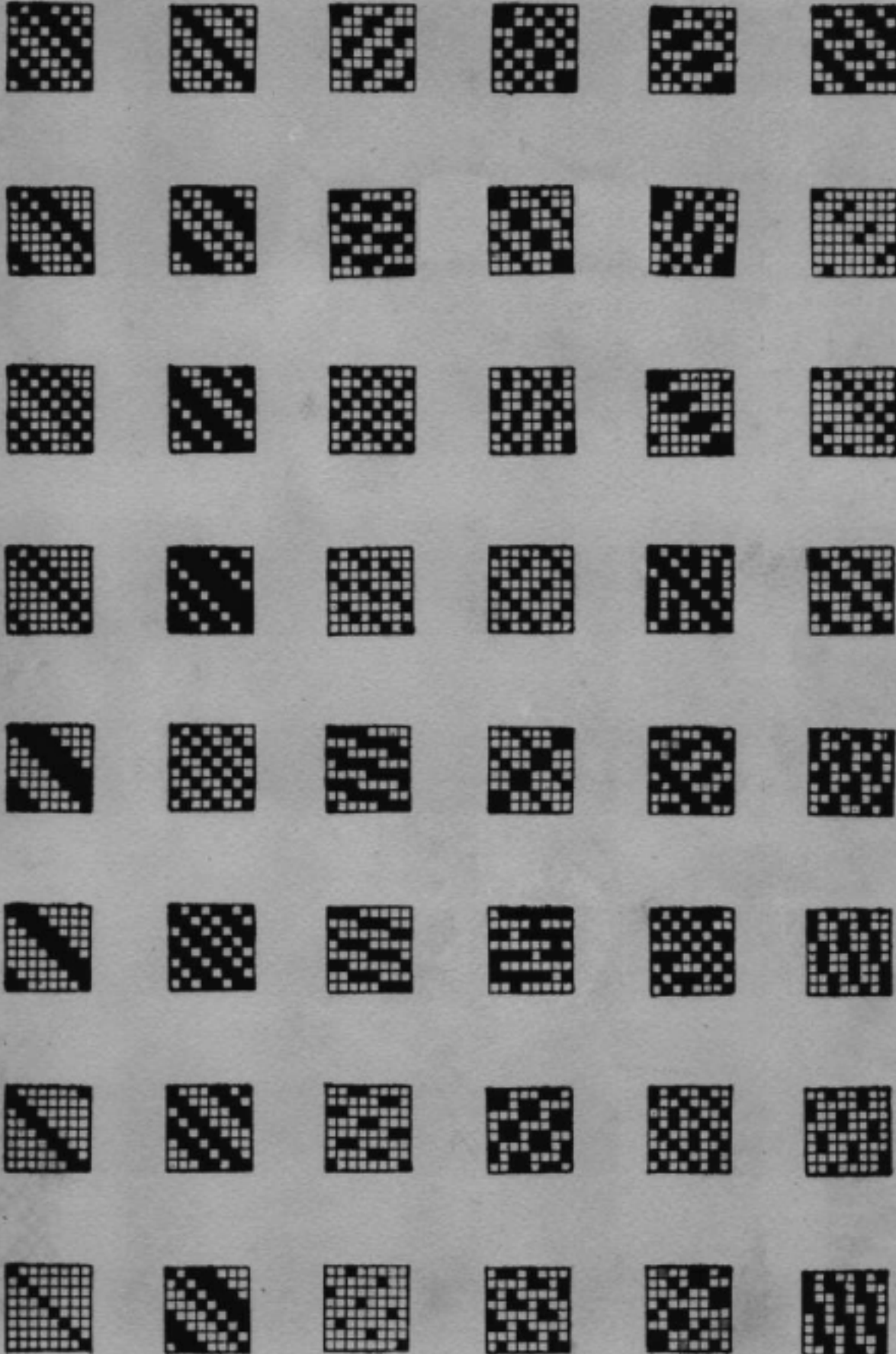
B. PRESSURE



3

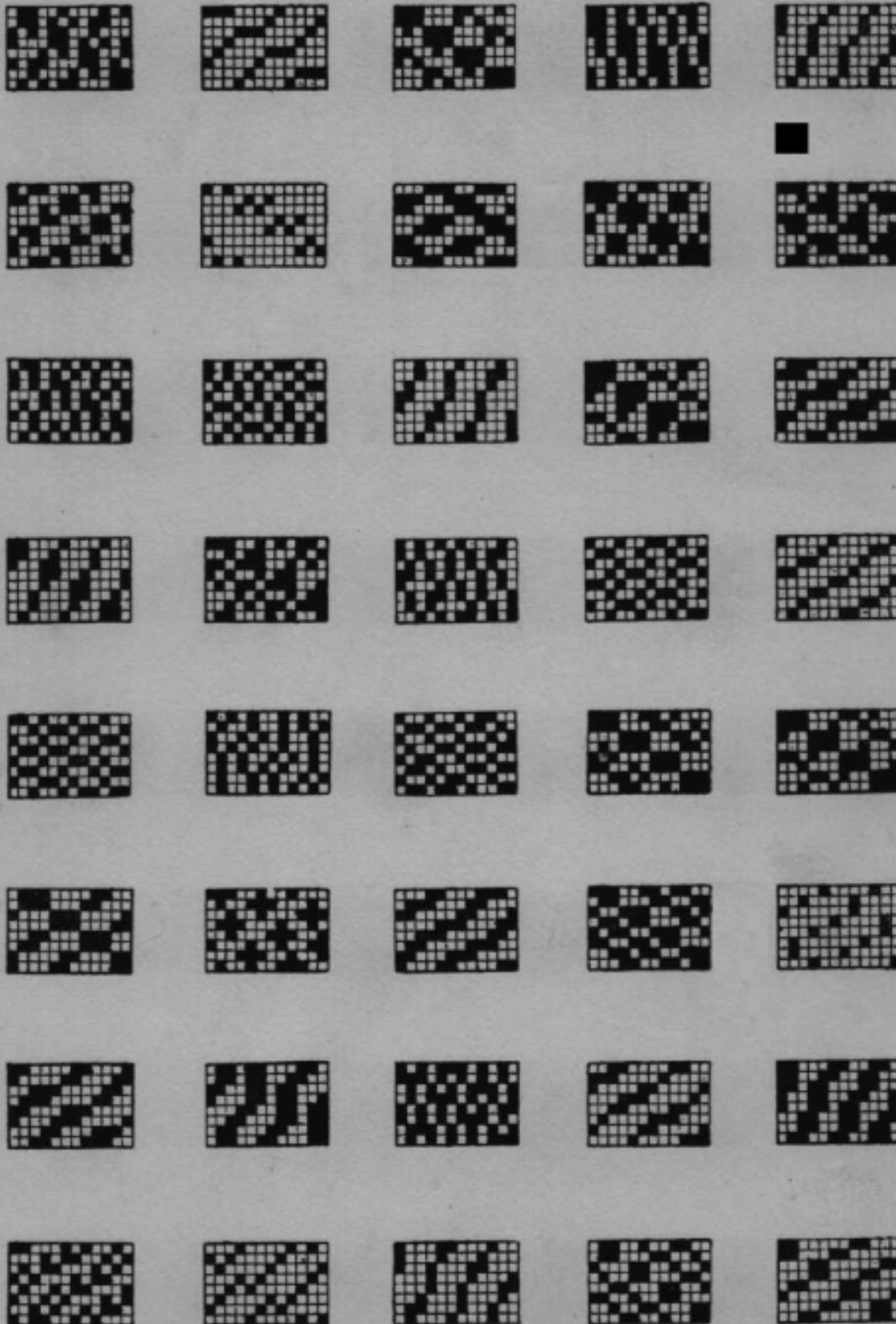


ARMURES CLASSIQUES SUR 8 FILS 8 COUPS



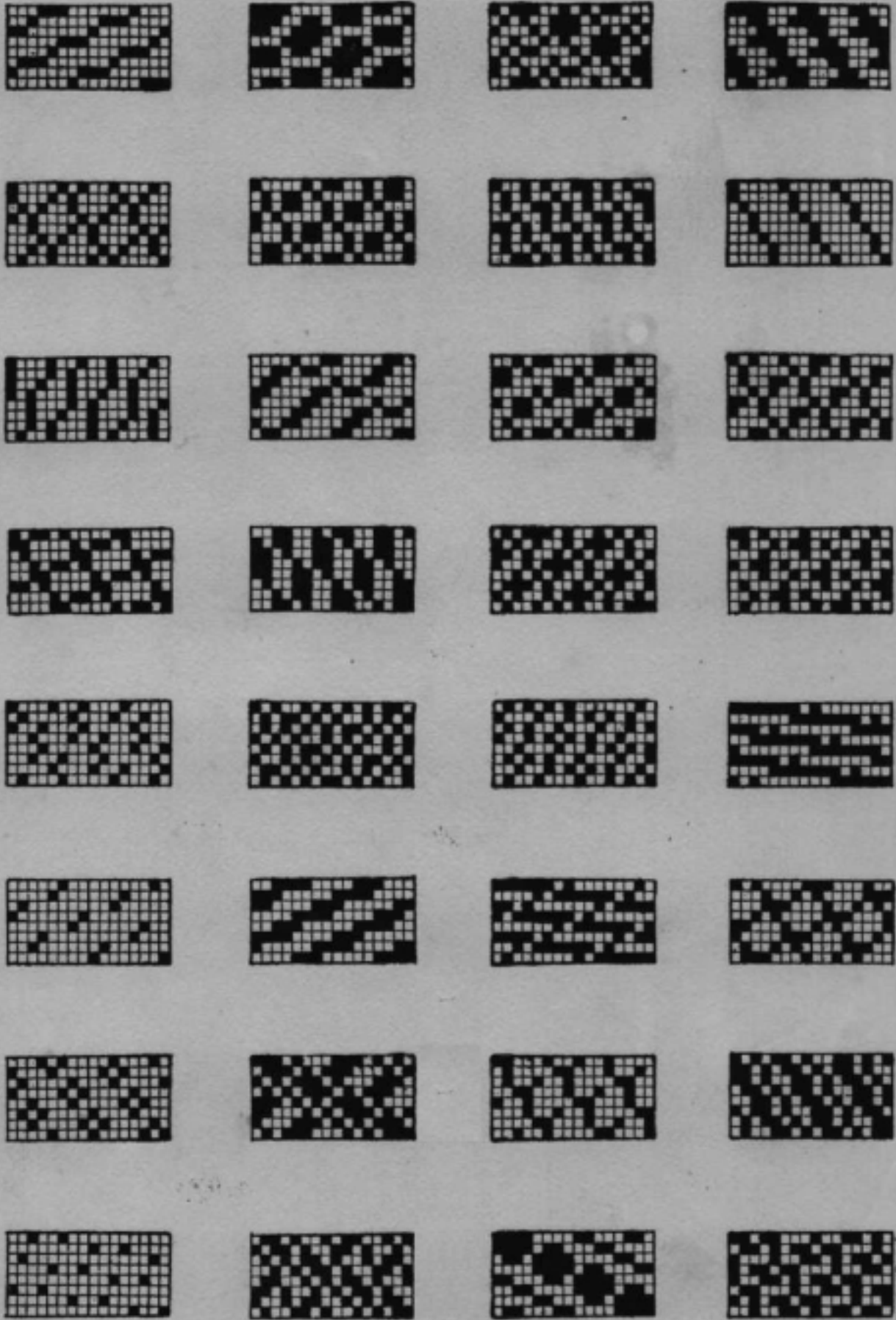
G. FRESSINET

ARMURES SUR 8 FILS 12 COUPS



B. PRESMIET

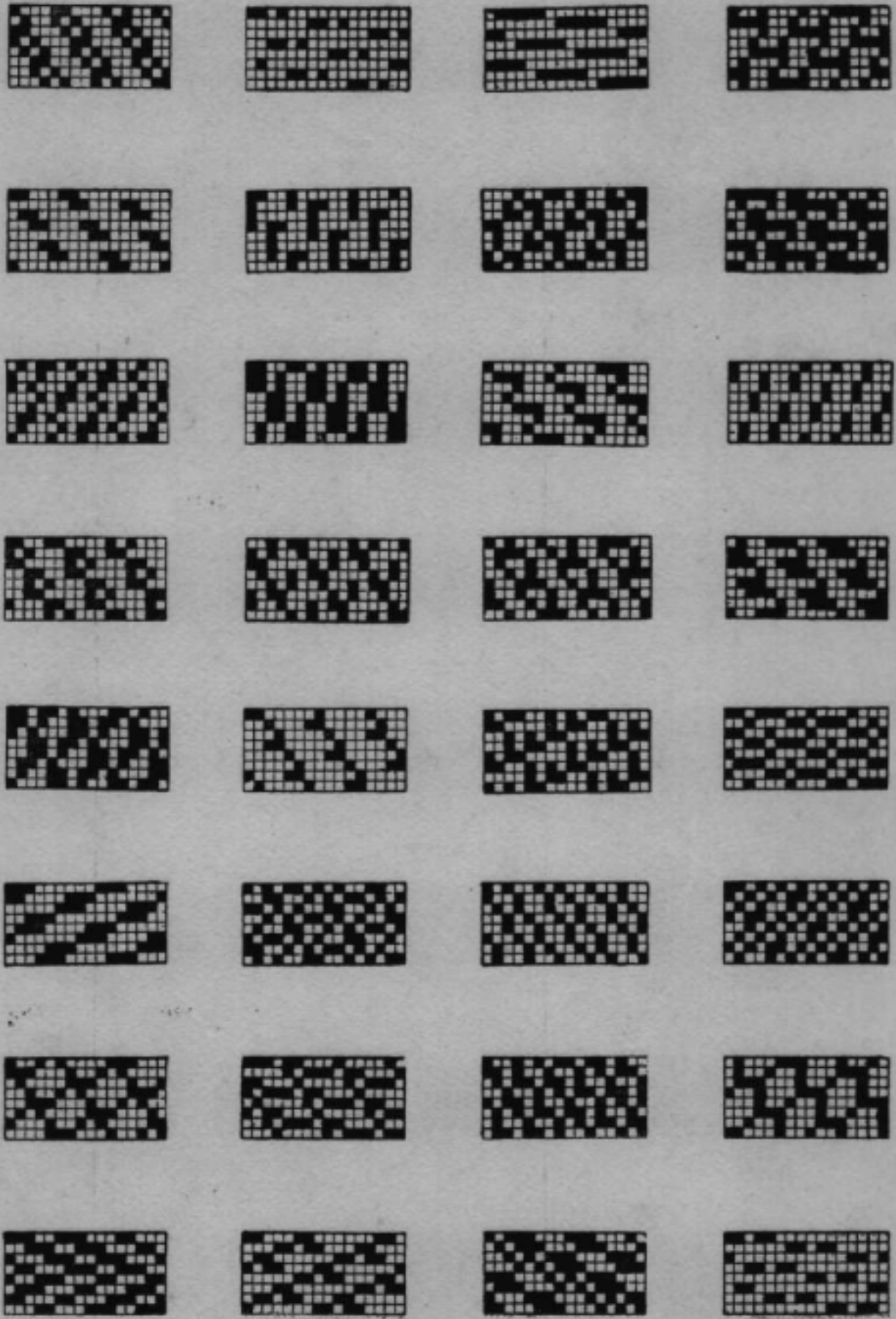
ARMURES SUR 8 FILS 16 COUPS



G. FRESINET

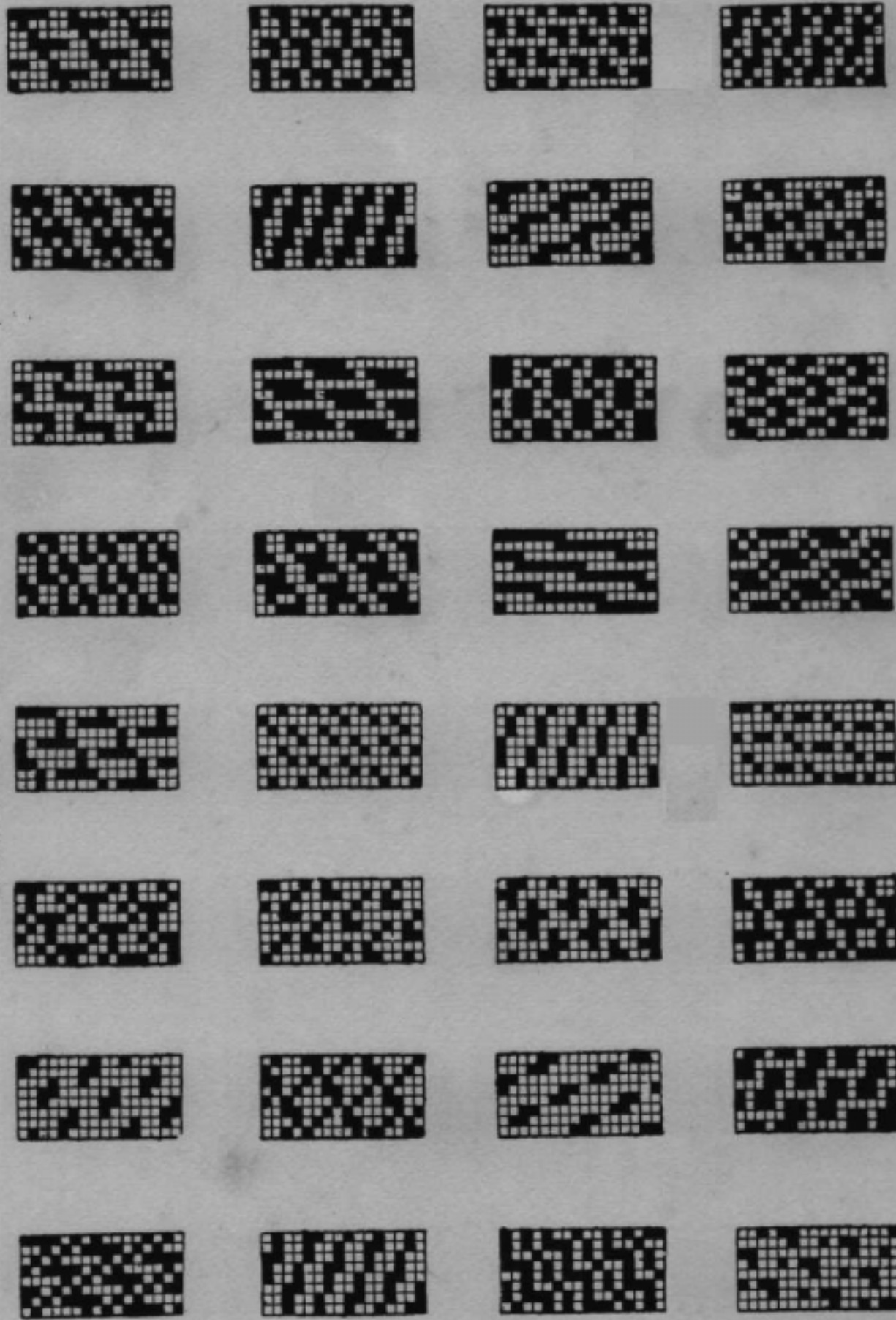
130507

ARMURES SUR 8 FILS 16 COUPS



B. PRESSINET

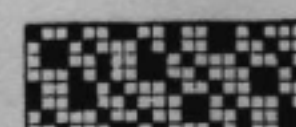
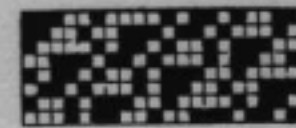
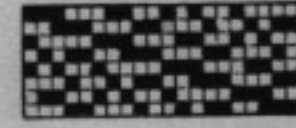
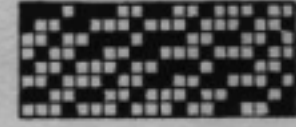
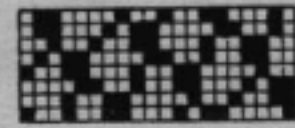
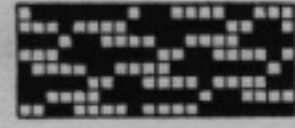
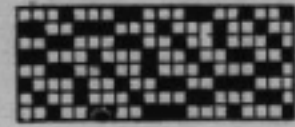
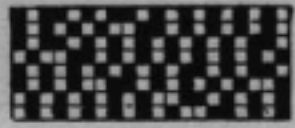
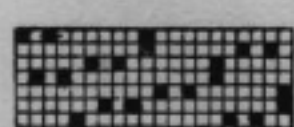
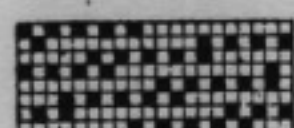
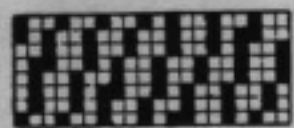
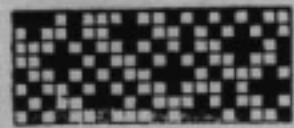
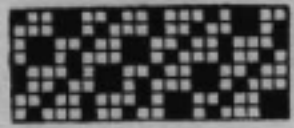
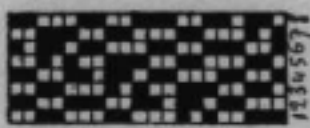
ARMURES SUR 8 FILS 16 COUPS



B. FRESSINET

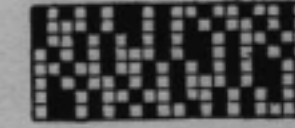
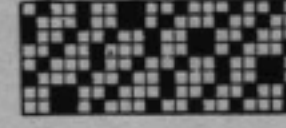
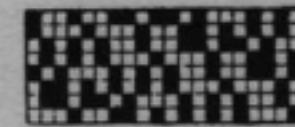
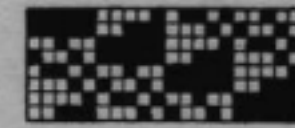
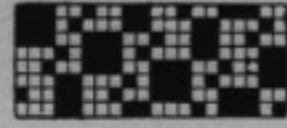
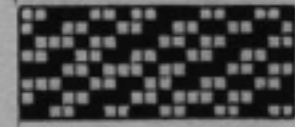
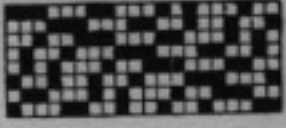
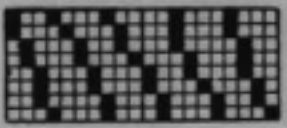
ARMURES SUR 8 FILS 20 COUPS

9.0000



B- PRESSINET

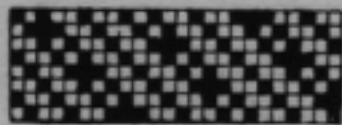
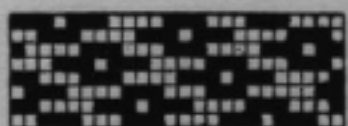
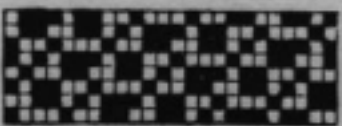
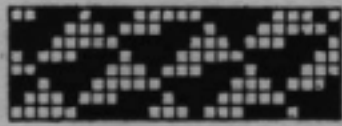
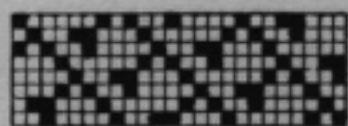
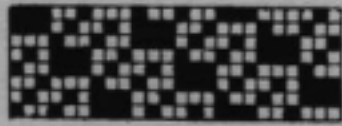
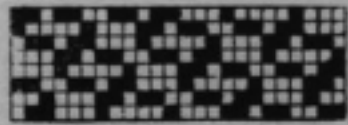
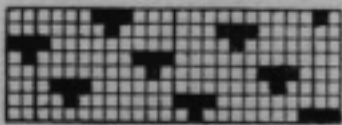
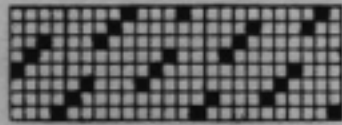
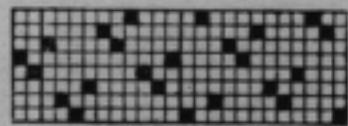
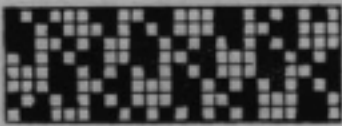
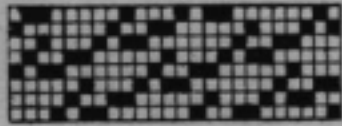
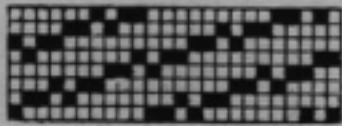
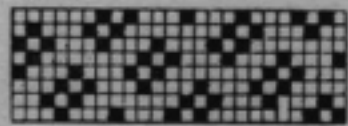
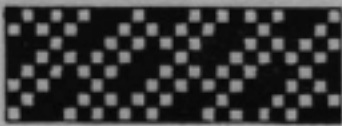
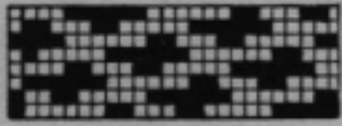
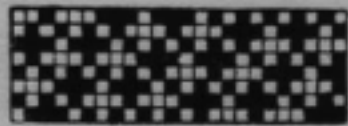
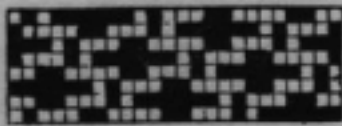
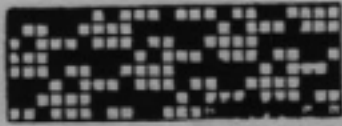
ARMURES SUR 8 FILS 20 COUPS



K. FRESSINET

PLANCHE 31

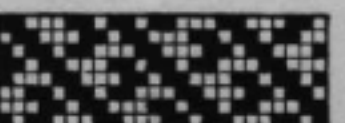
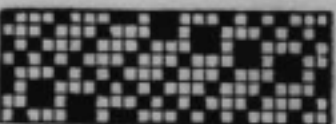
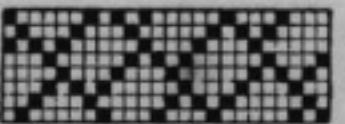
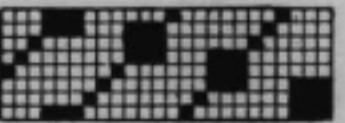
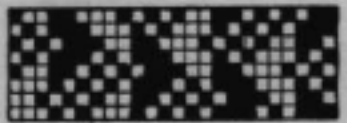
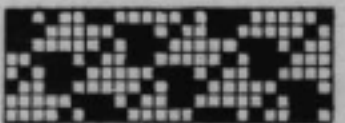
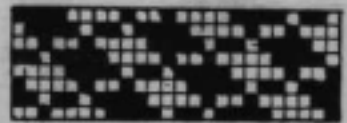
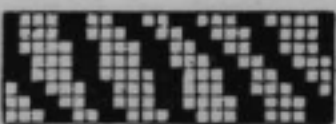
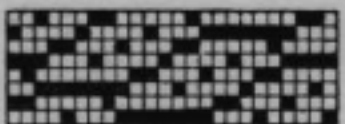
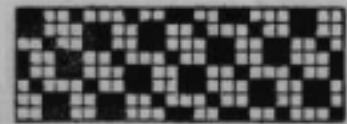
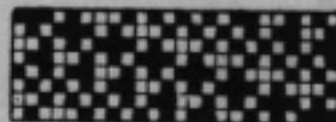
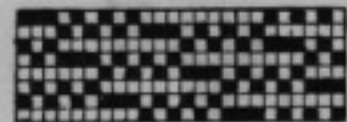
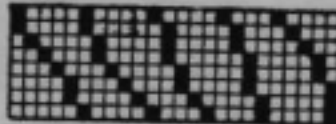
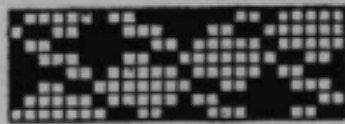
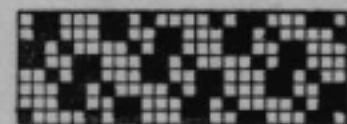
ARMURES SUR 8 FILS 24 COUPS



B. PRESSINET

PLANCHE 33

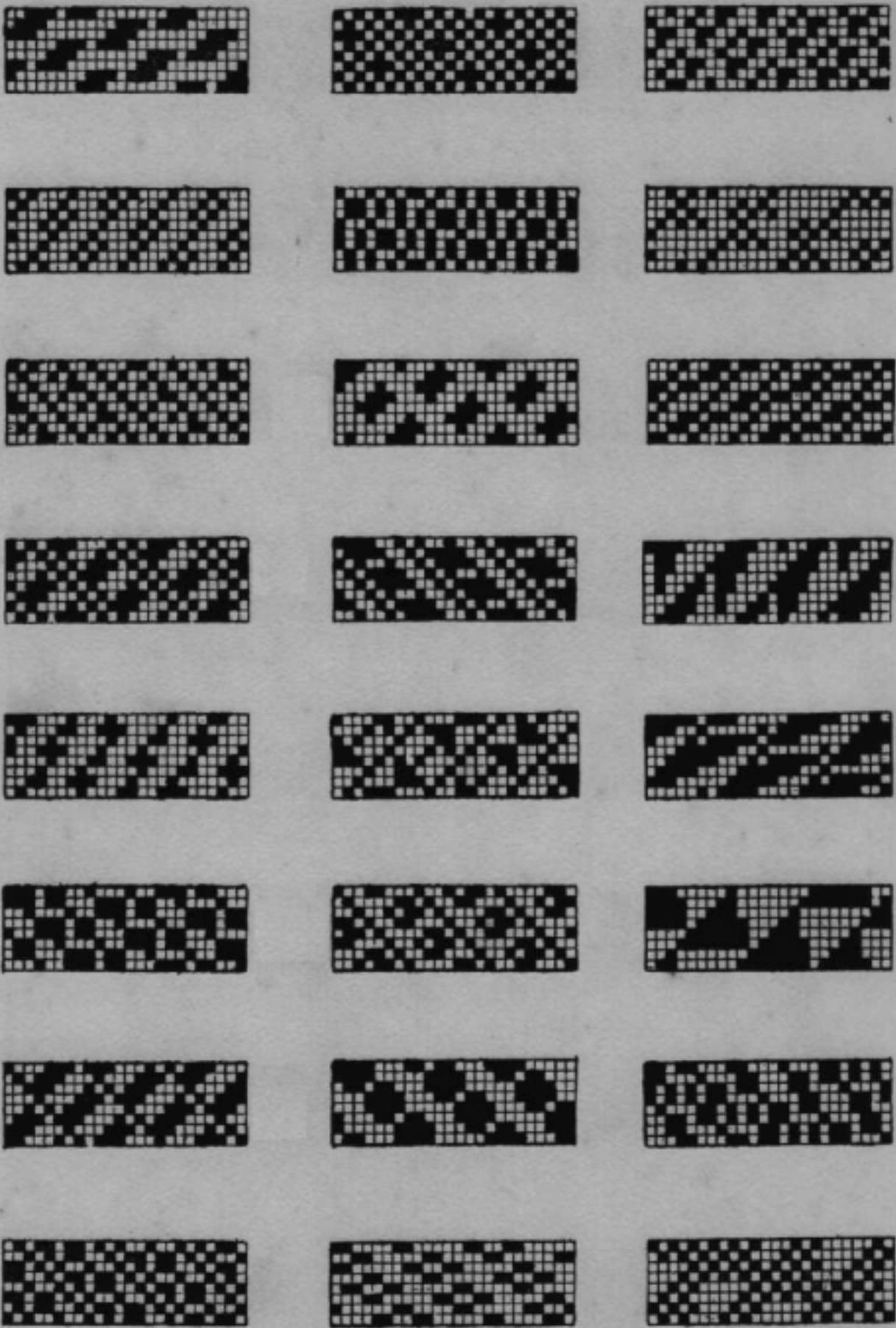
ARMURES SUR 8 FILS 24 COUPS



E. PRESSINET

PLANOHE 34

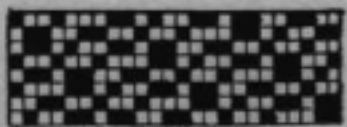
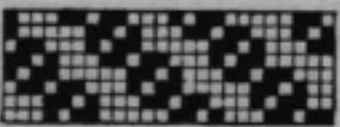
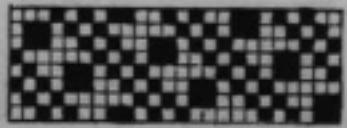
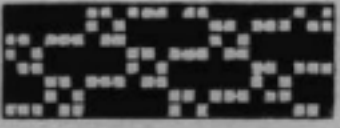
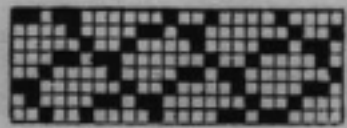
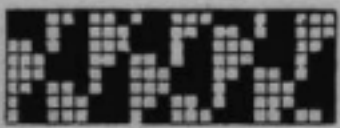
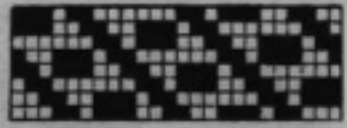
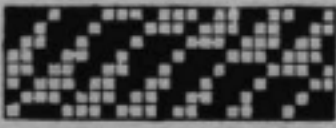
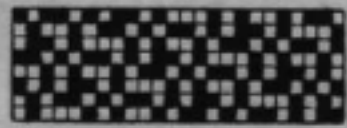
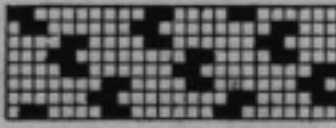
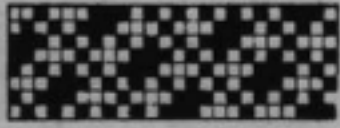
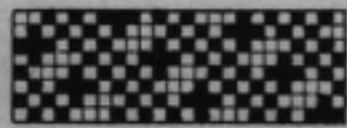
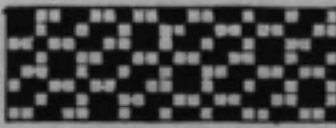
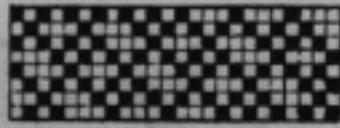
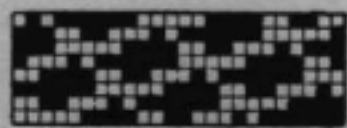
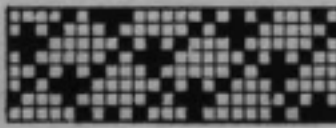
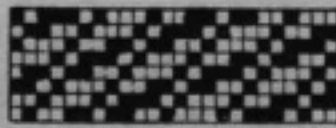
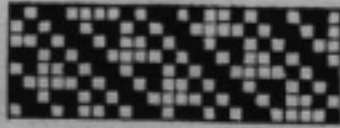
ARMURES SUR 8 FILS 24 COUPS



E. FRESSINET 1

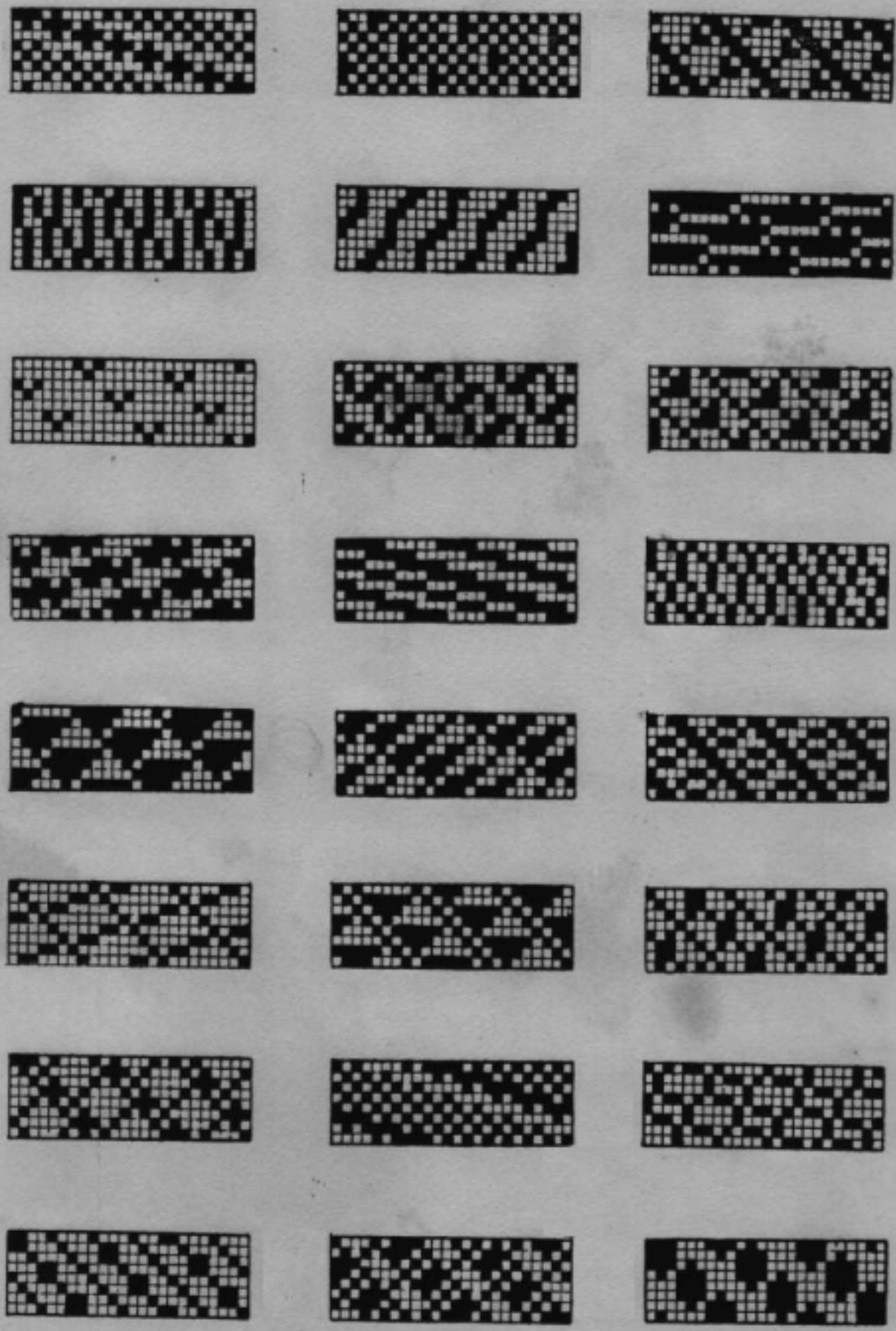
PLANCHE 35

ARMURES SUR 8 FILS 24 COUPS



9, PRESSURET

ARMURES SUR 8 FILS 24 COUPS



A. PRESAINET

PLANCHE 39