

# ATLAS

---

## TISSAGE ANALYSÉ

---

### THÉORIE ET PRATIQUE

PAR

CONSTANT GRIMONPREZ

---

SAINT-QUENTIN

IMPRIMERIE TYPOGRAPHIQUE ET LITHOGRAPHIQUE DU *GLANEUR*

1878

(TOUS DROITS RÉSERVÉS)

# ERRATA (*Figures*)

---

*La mise en carte et le montage qui suivent le Sergé de 3, effet Chaîne (Fig. 17) doivent porter le N.º 18 au lieu du N.º 17.*

---

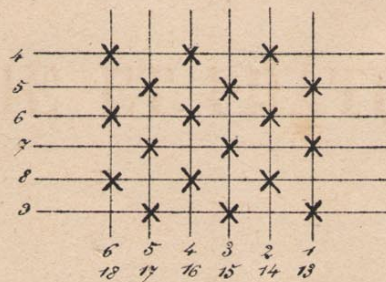
*Figure 73 (Montage) sur les marches*

*1, 2, 3, 4, 5, 6*

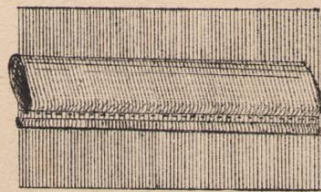
*13, 14, 15 16 17 18*

*Lames 4, 5, 6, 7, 8, 9, faire Toile au lieu de Sergé de 3 Trame*

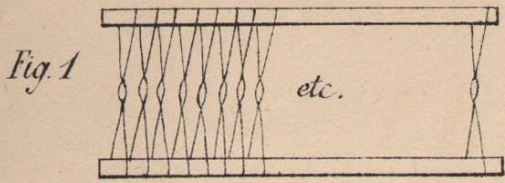
---



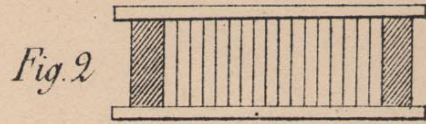
*Dessin 115 — L'étendue à faire le pli doit prendre naissance après le lancé de la duité d'attache. Ce pli tiendra, dès lors une position contraire à celle que représente le dessin.*



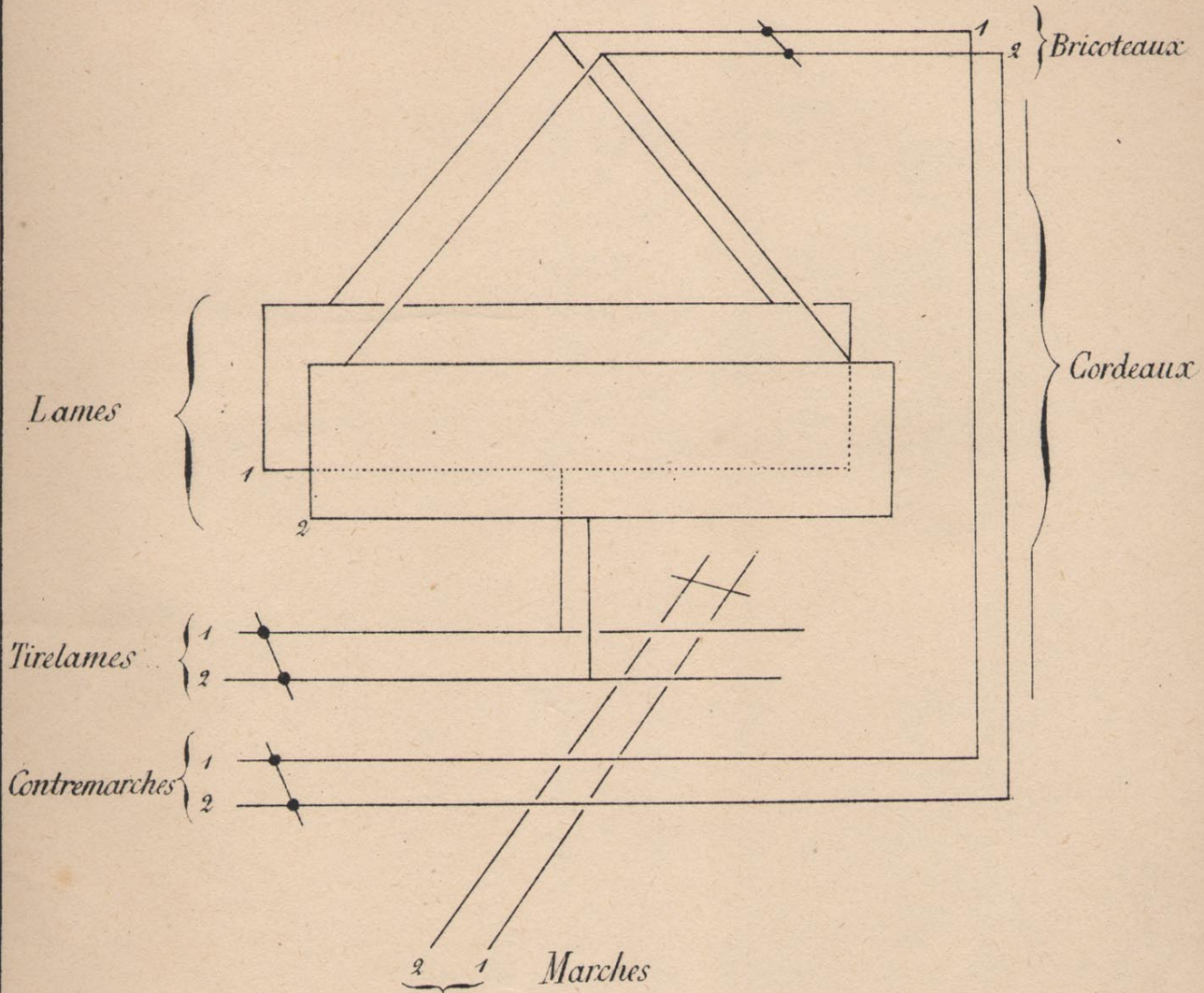
*Lame*



*Peigne*



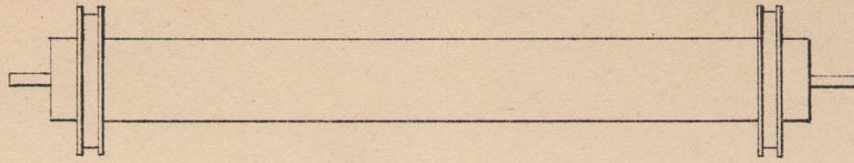
*Harnais*



*Pratique*



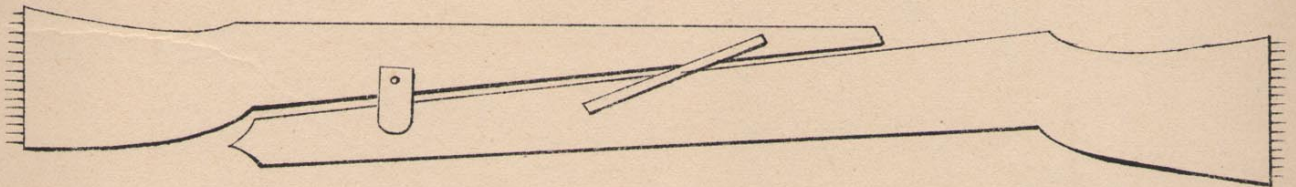
*Ensemble (Fig. 3)*



*Navettes (Fig. 4)*

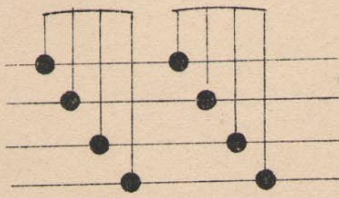


*Temple (Fig. 5)*

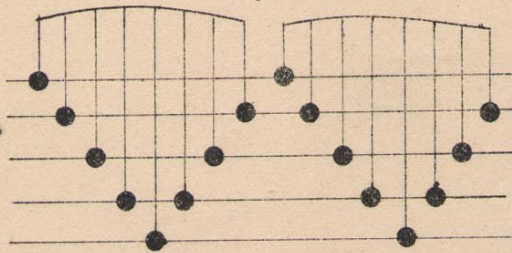


*Remettages*

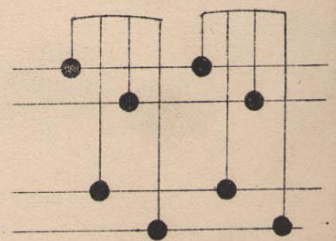
*Fig. 6*



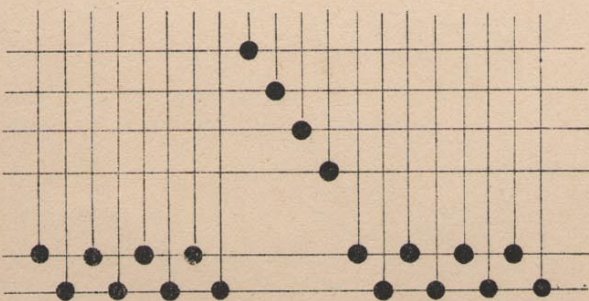
*Fig. 7*



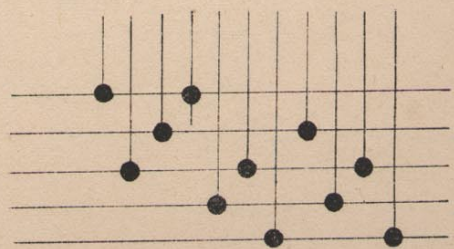
*Fig. 8*

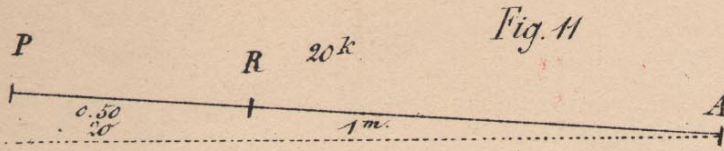


*Fig. 9*



*Fig. 10*





$$20 \times 0.50 = 1000 = \frac{6^k 666 \text{ gr.}}{1^m 50}$$

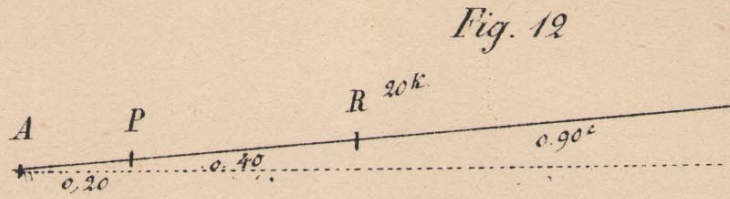


Fig. 12

$$20 \times 0.40 = 800 = \frac{40^k}{0.20}$$

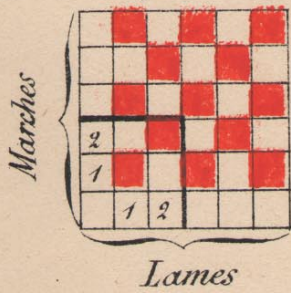
Fig. 13



Fig. 14



Fig. 15



Lames

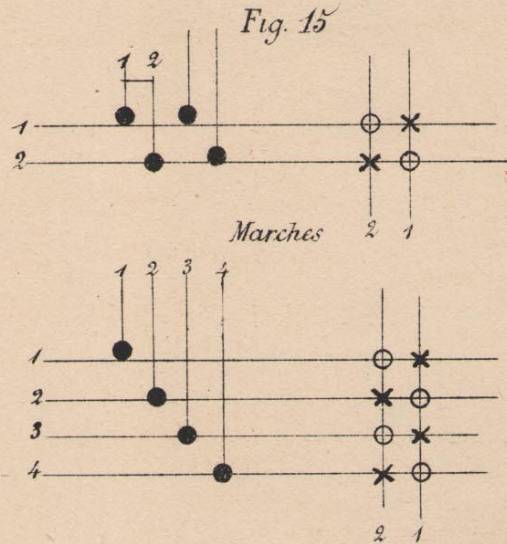
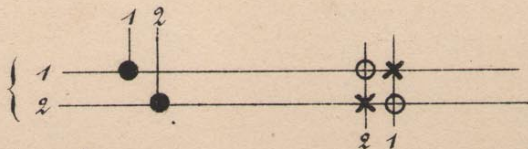


Fig. 15

Fig. 15

Montage pratique (Fig. 15)

Lames



Tirelames, Longs cordons



Contremarches, Courts cordons



Marches

Fig 15<sup>bis</sup>

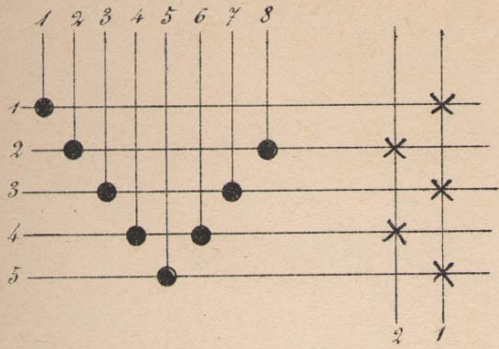


Fig 15<sup>ter</sup>

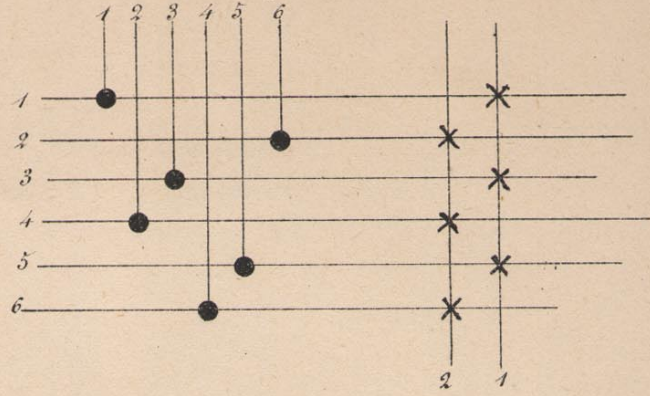


Fig. 16

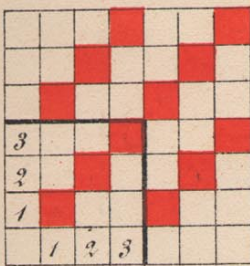
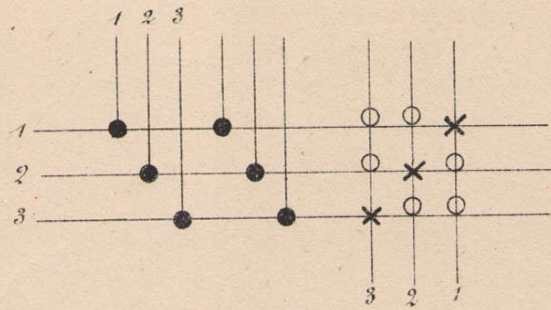
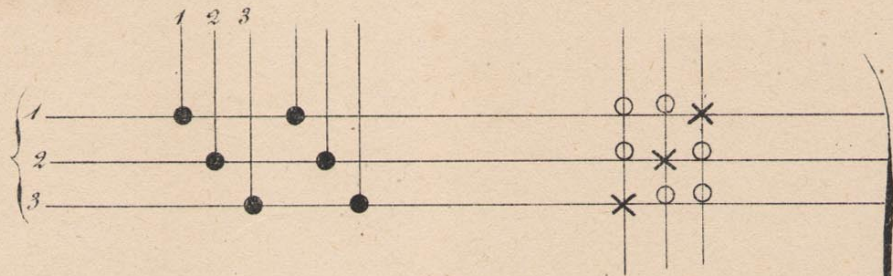


Fig. 16

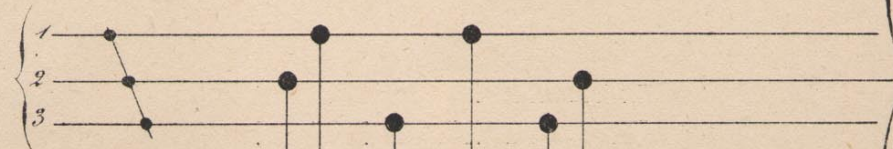


### Montage pratique

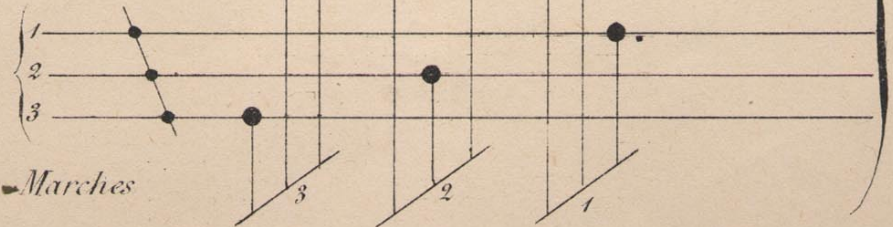
Lames



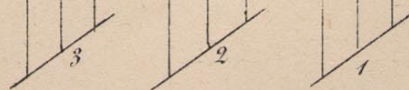
Tirélames.



Contremarches

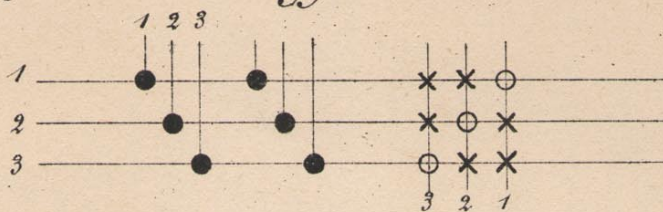


Marches



# Sergé de 3, effet Chaîne

Fig. 17



## Montage pratique

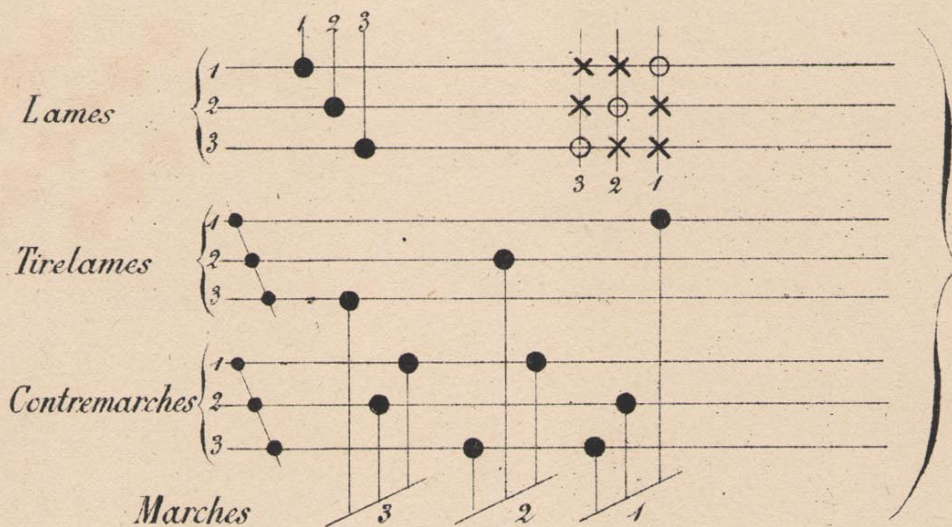


Fig. 17

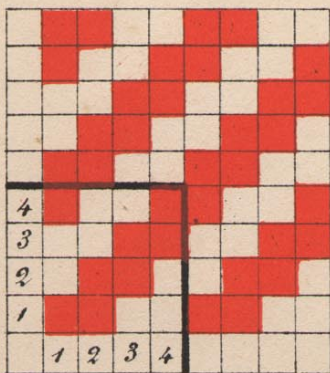
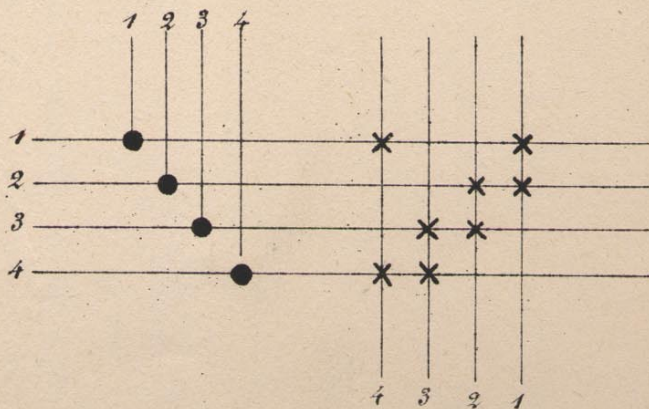
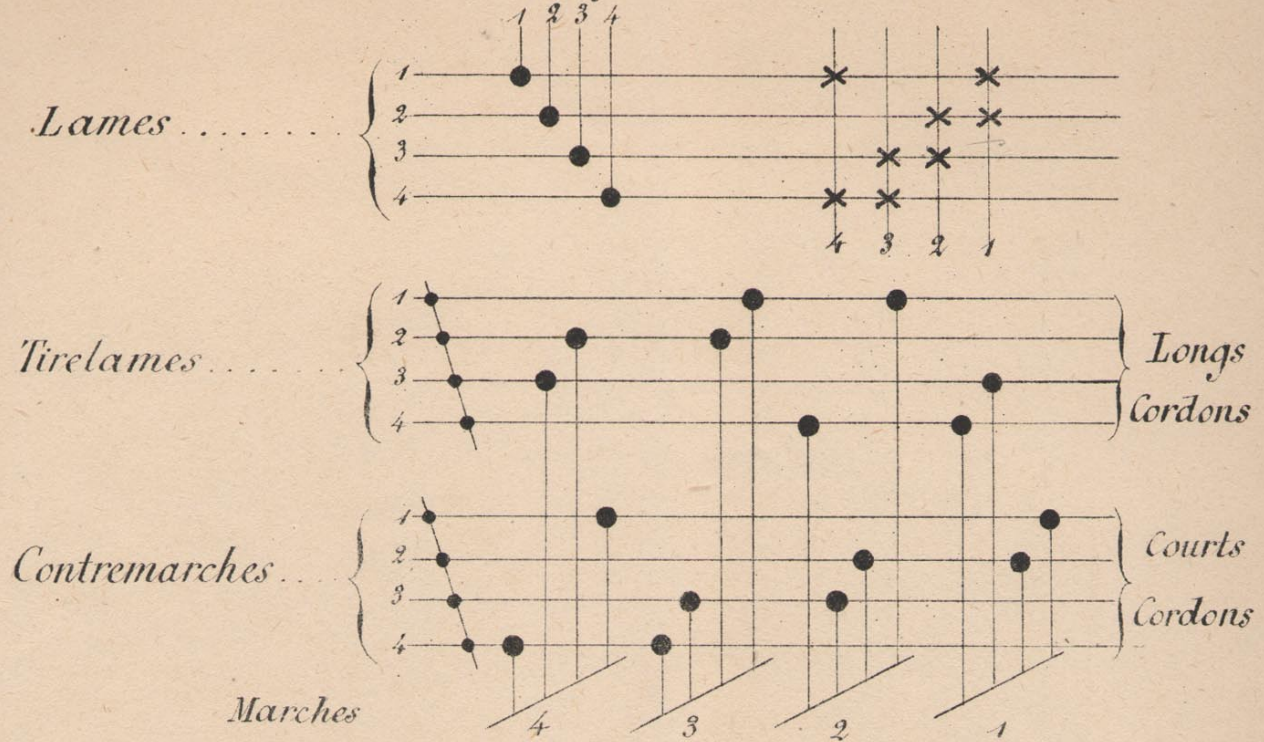


Fig. 17



# Montage pratique

Fig. 18.



# Autre Montage

Fig. 18<sup>bis</sup>

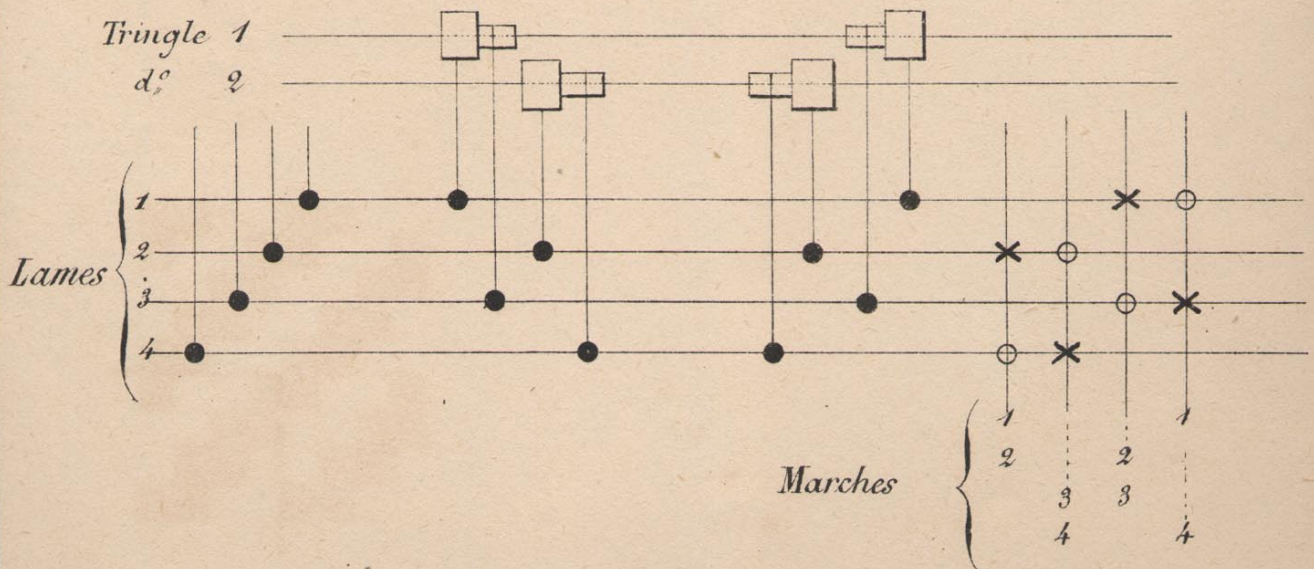
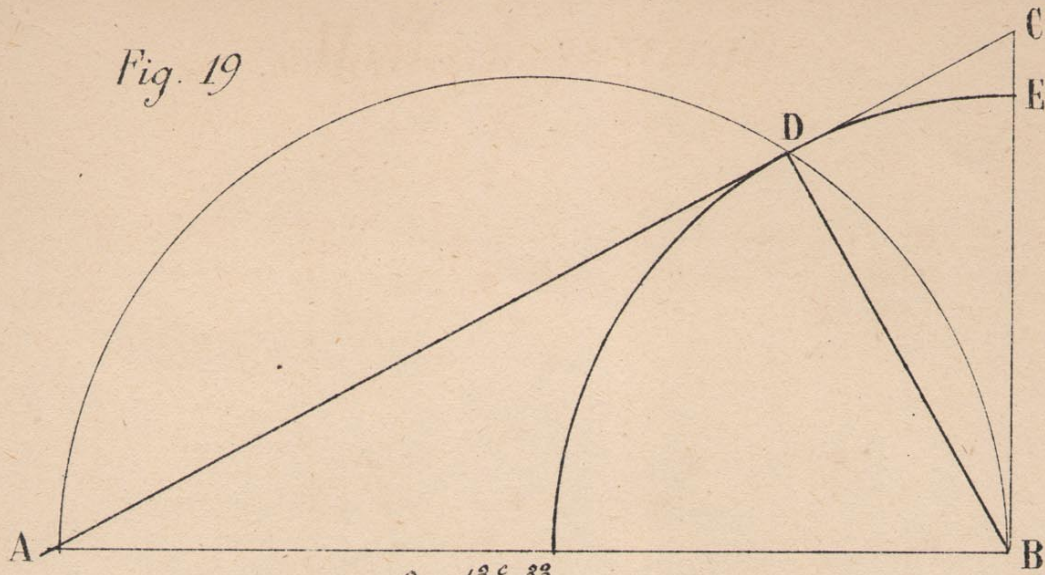


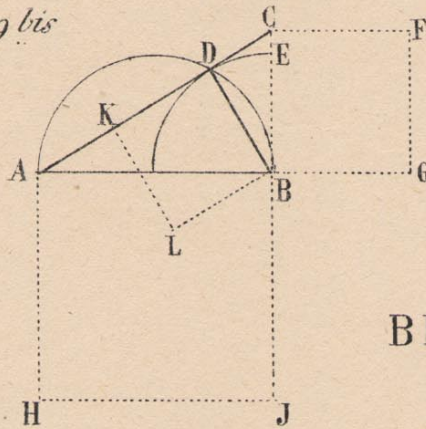


Fig. 19



$0. 13^{\circ} 33$   
*ADB, Inclinaison du Compteur*

Fig. 19 bis



$AB = 0, 13^{\circ} 33$

$DB = 0, 06^{\circ} 66$

$BC = 0, 07 69$

*BDKL, Inclinaison du Compteur*

Fig. 20

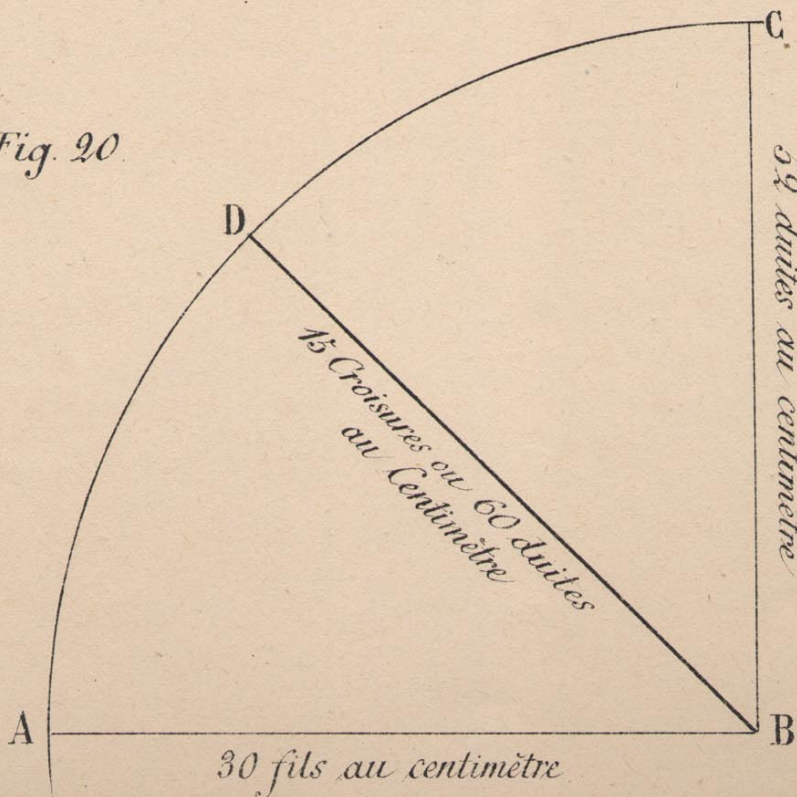


Fig. 21

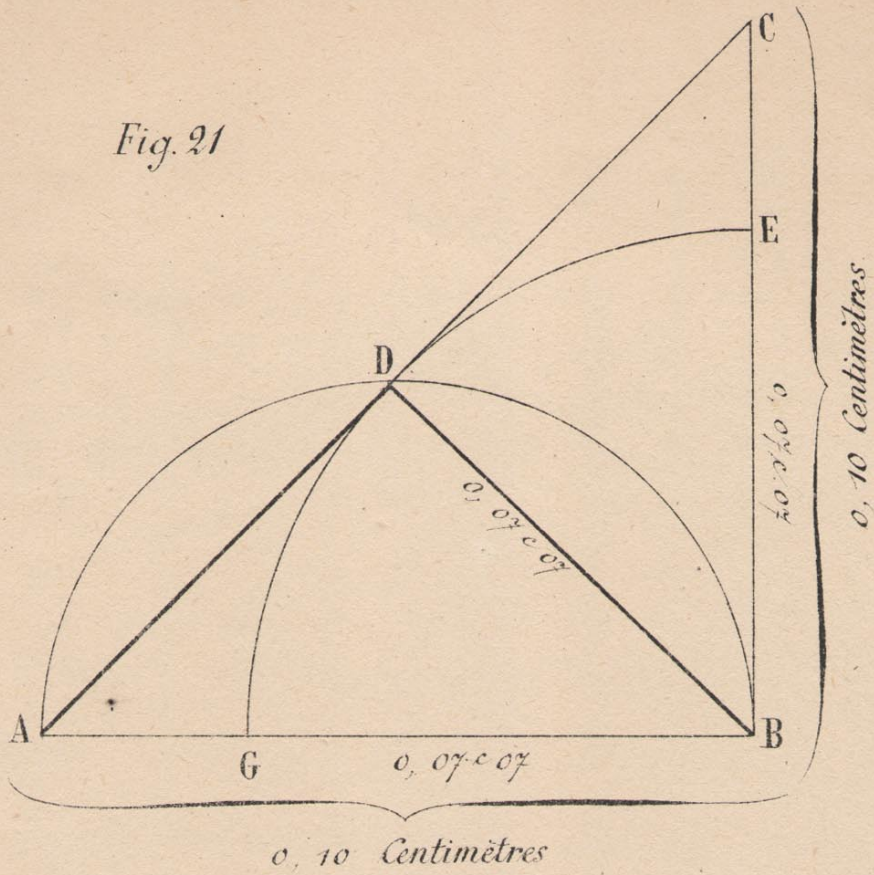


Fig. 22

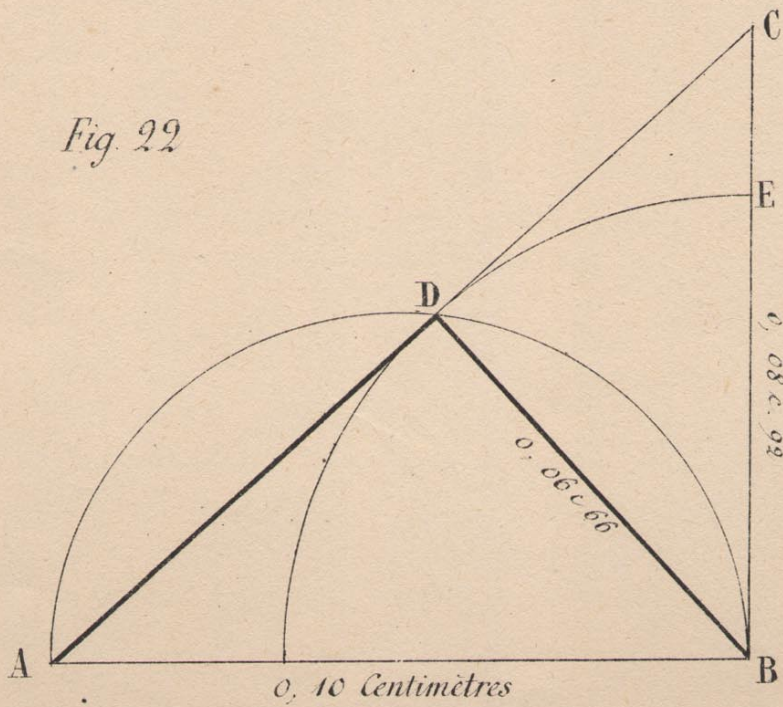


Fig. 23

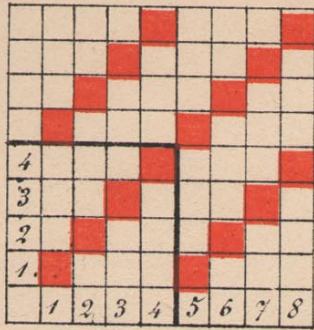
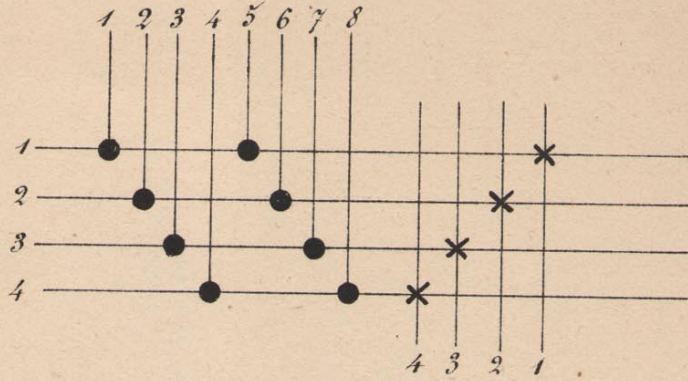
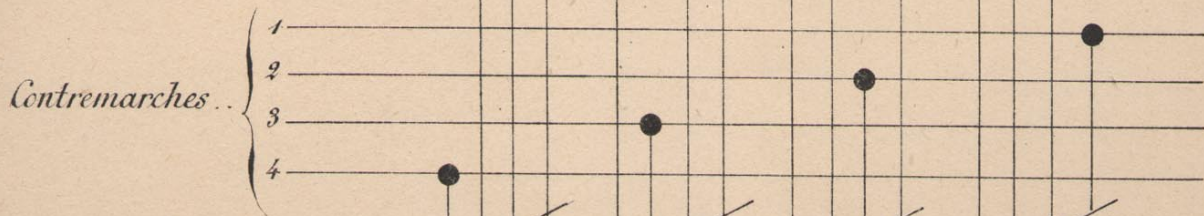
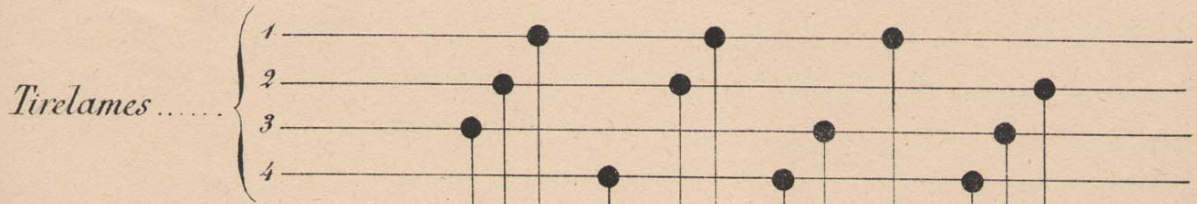
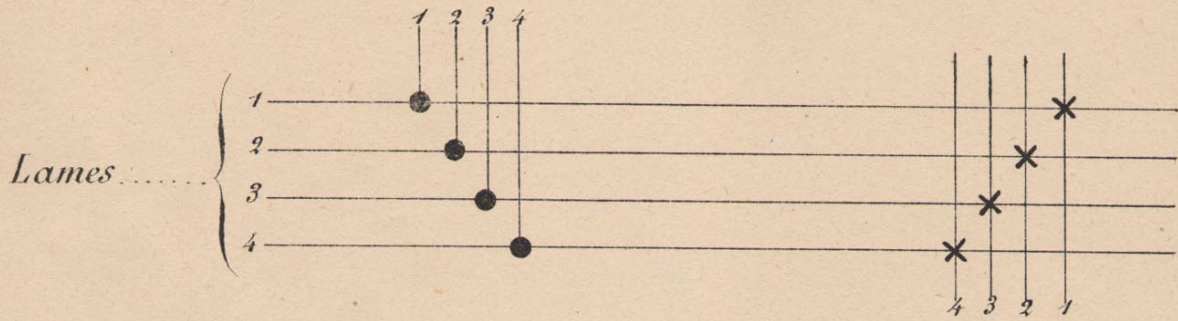


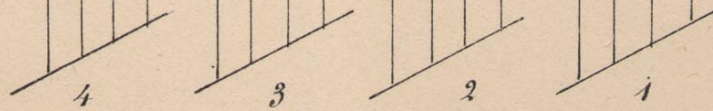
Fig. 23



### Montage pratique



Marches



# Sergé de 4, Effet Chaîne

Fig. 24

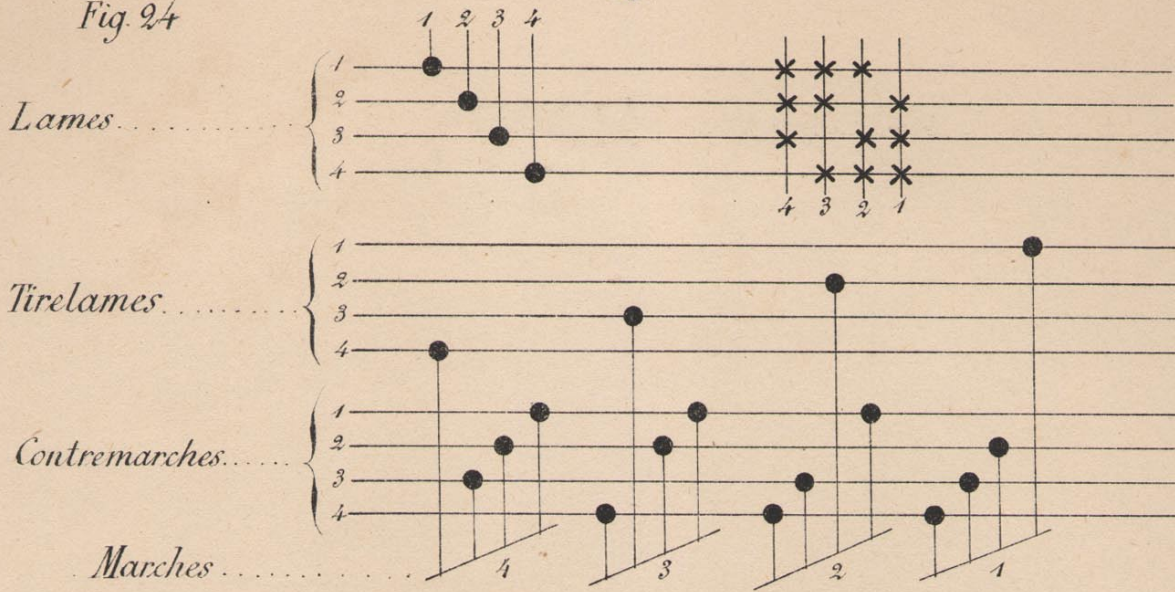


Fig. 25

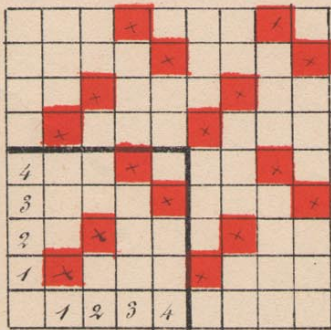
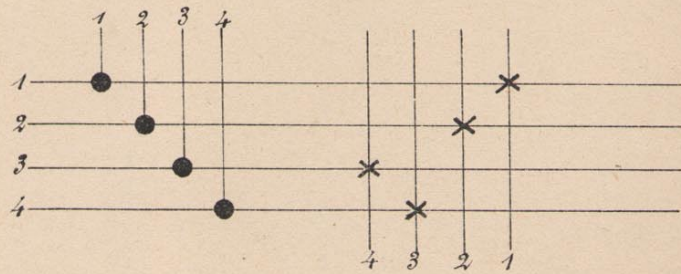
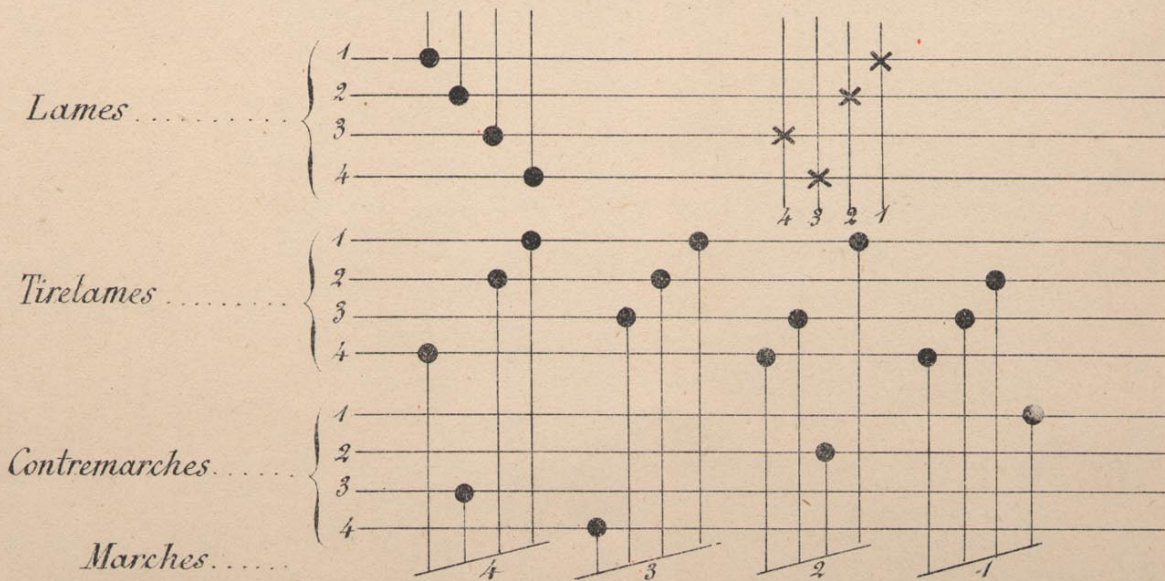


Fig. 25



## Montage pratique



# Autre avec marches-Sergé de 4

Fig. 26

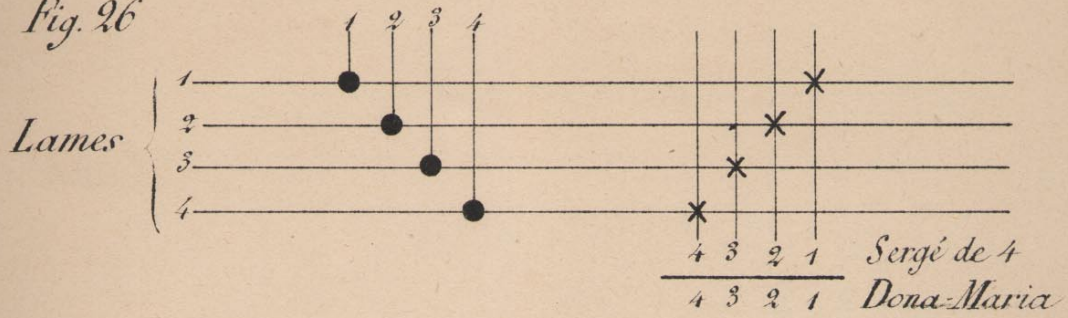


Fig. 27

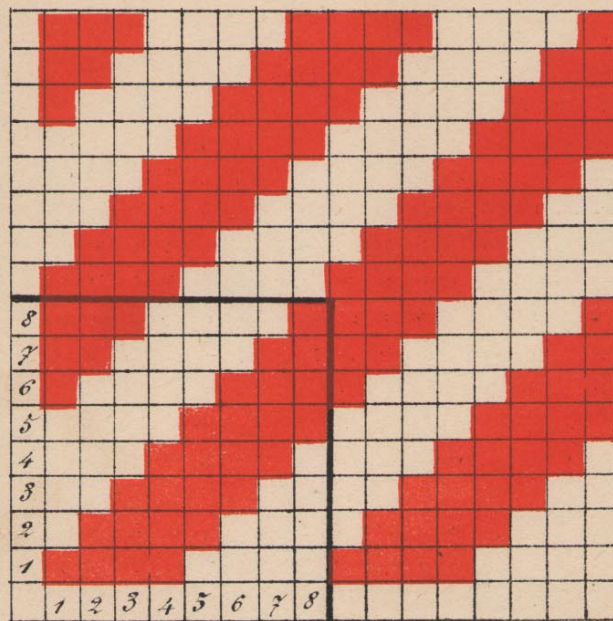
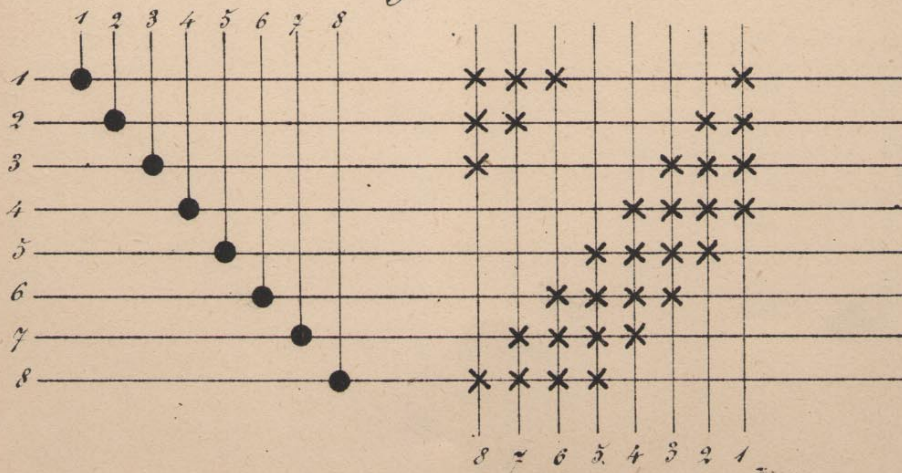


Fig. 27



# Montage pratique

Fig. 27.

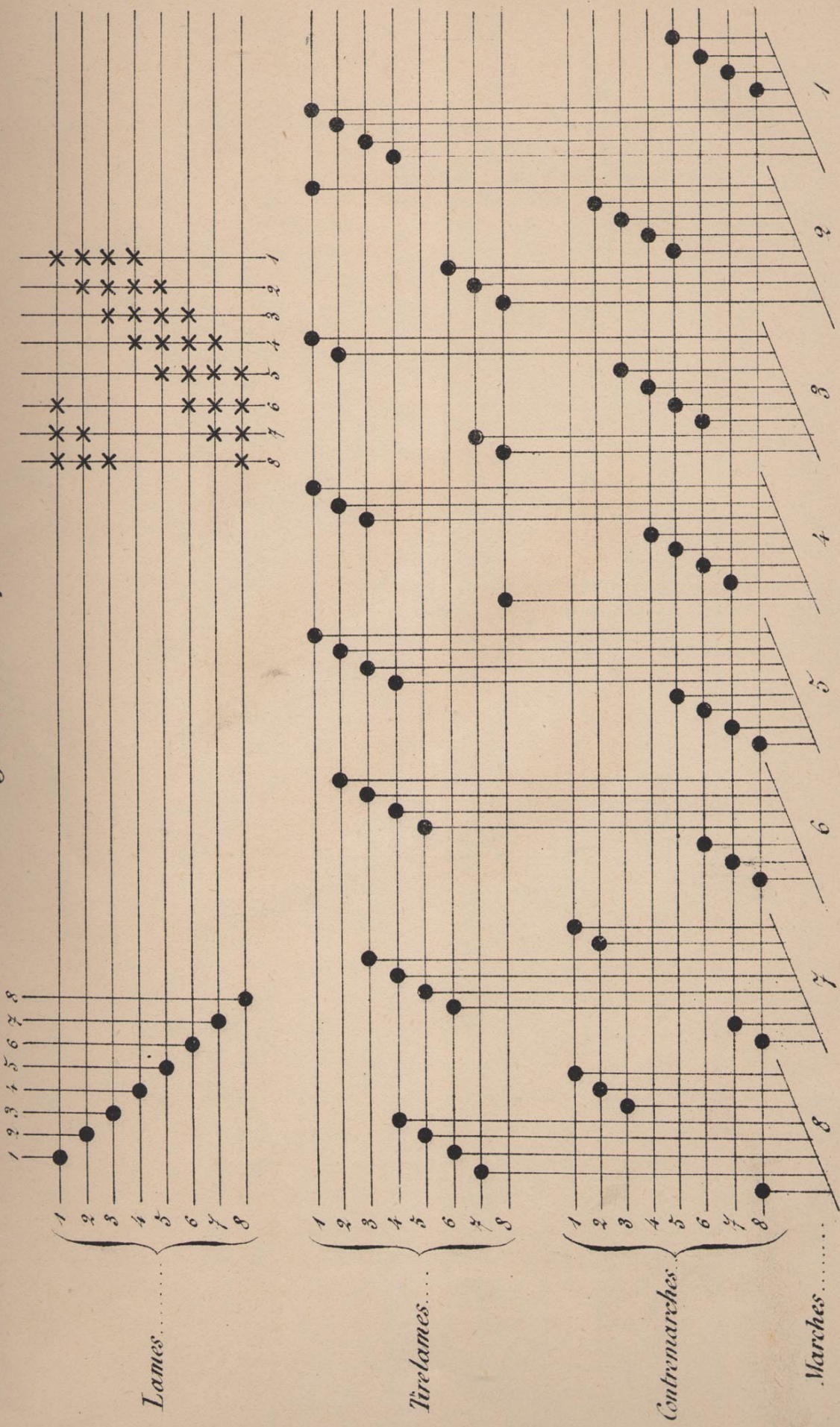


Fig. 27. Pas rond.

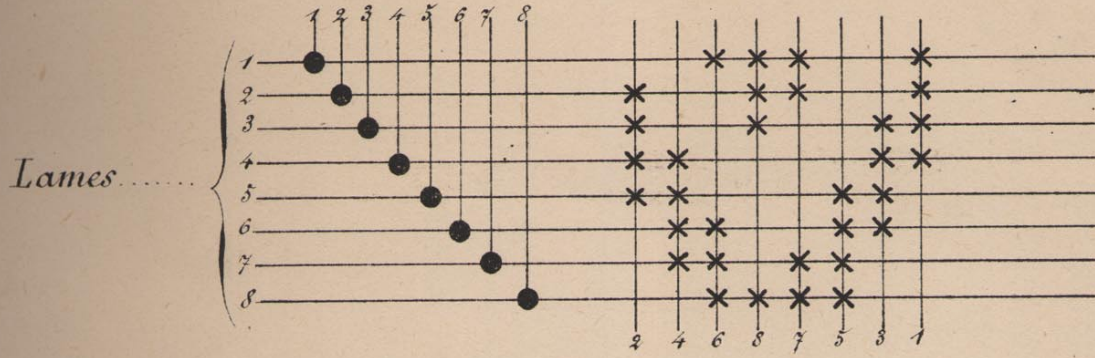


Fig. 28.

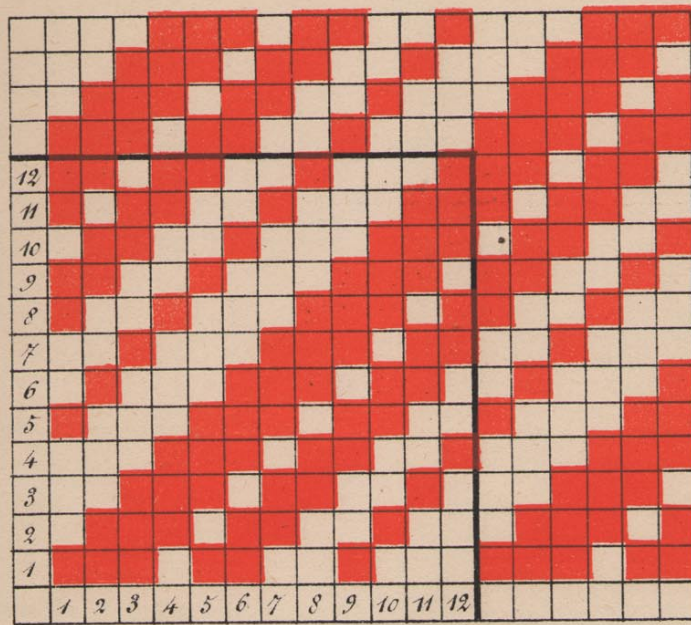
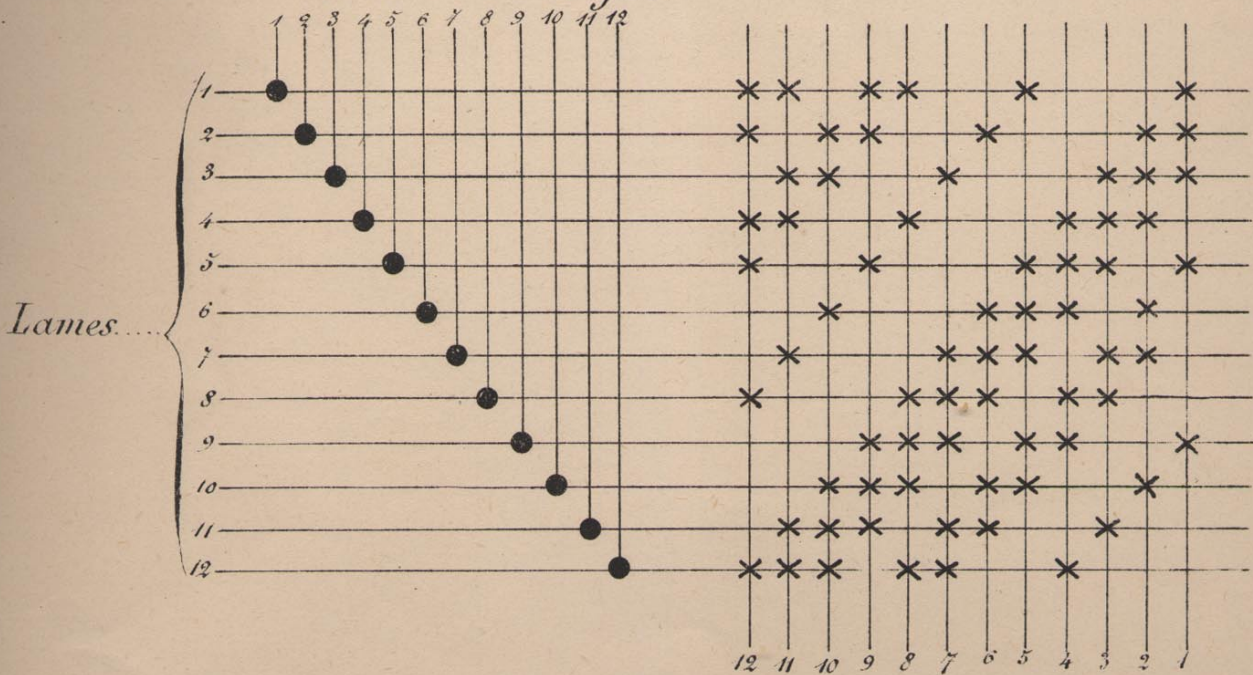


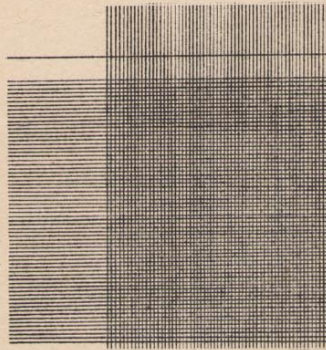
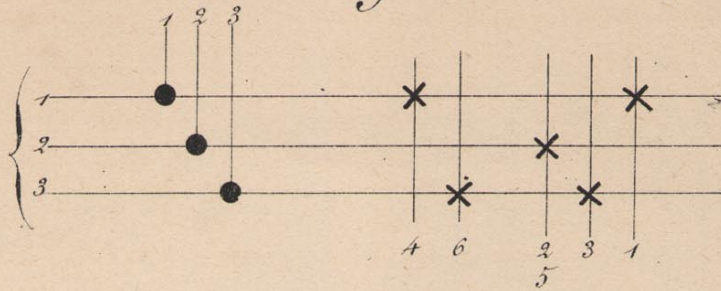
Fig. 28



# Pas rond Sergé de 3

Fig. 28<sup>(2)</sup>

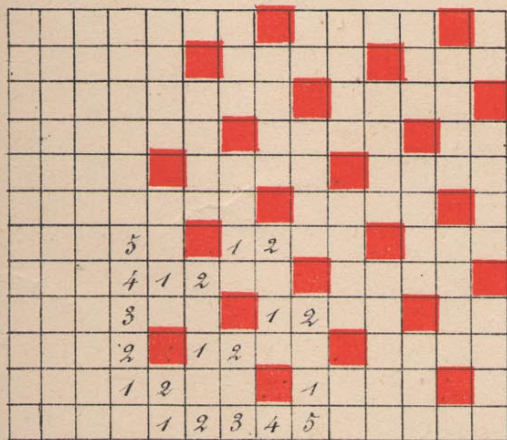
Lames



Duite à décomposer.

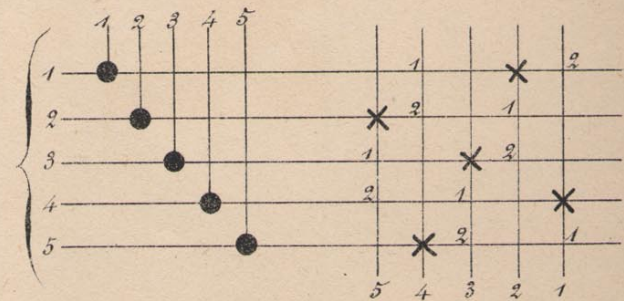
Tissu à décomposer.

Fig. 29



Lames

Fig. 29



## Même - Pas rond - Fig. 29<sup>(2)</sup>

Lames

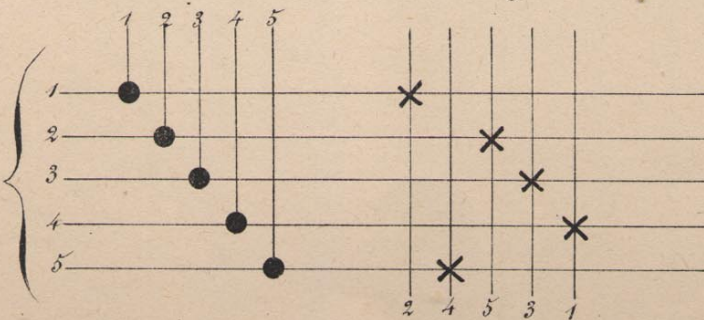




Fig. 29<sup>(3)</sup>

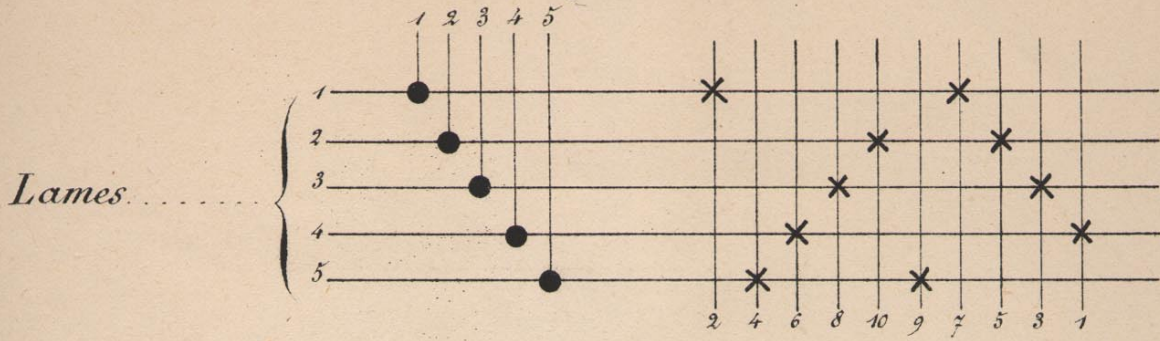


Fig. 29<sup>(4)</sup>

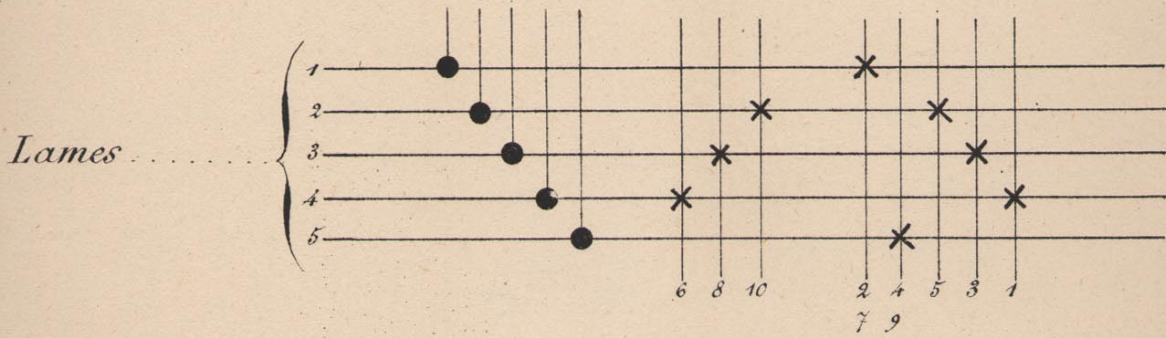


Fig. 30.

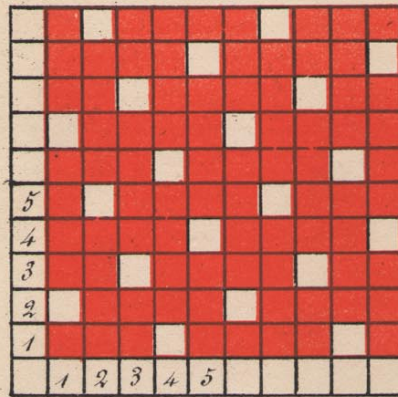


Fig. 30.

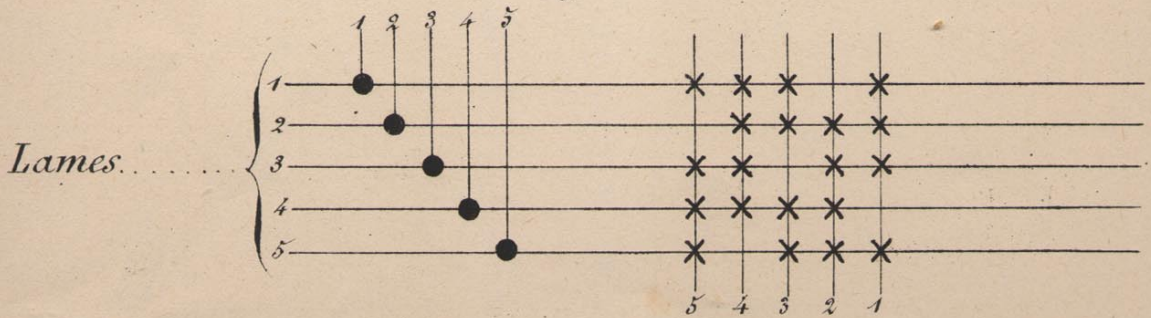


Fig. 31.

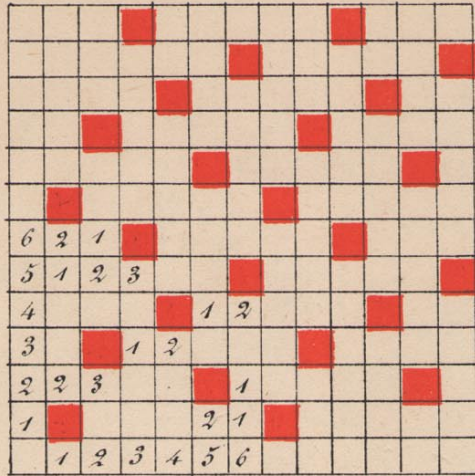


Fig. 31

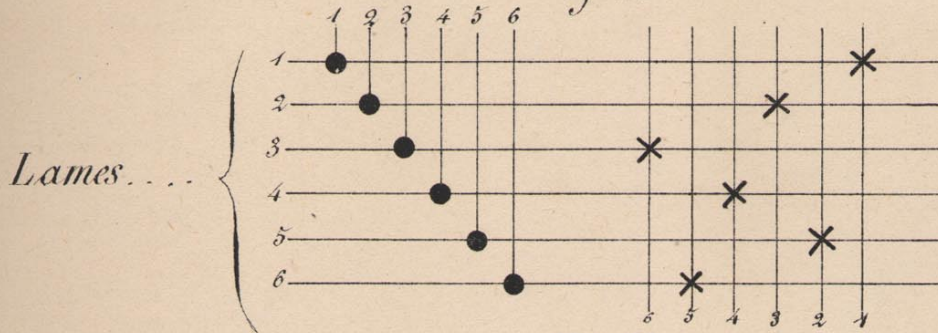


Fig. 32.

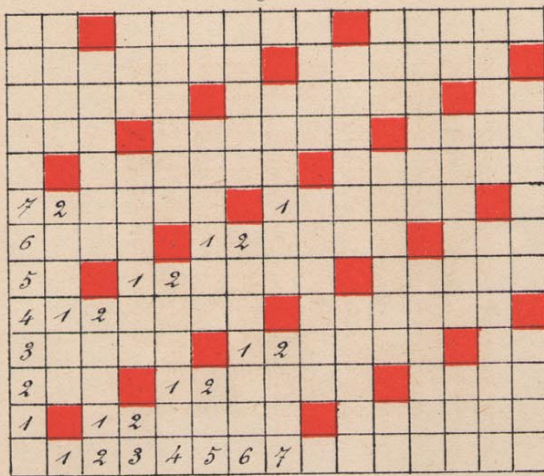


Fig. 32.

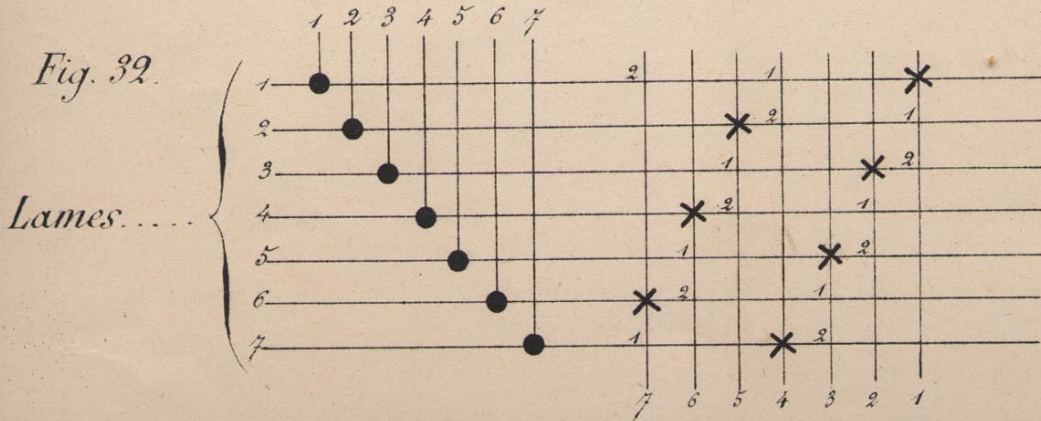


Fig. 33

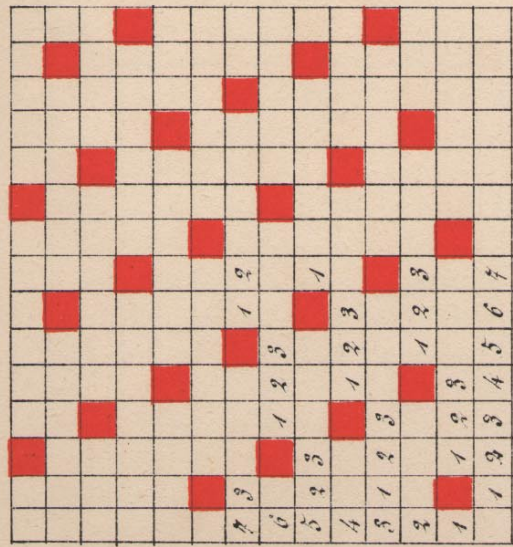


Fig. 33.

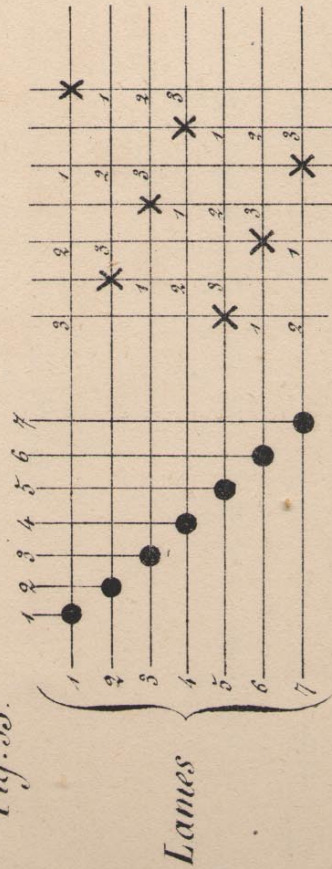


Fig. 34

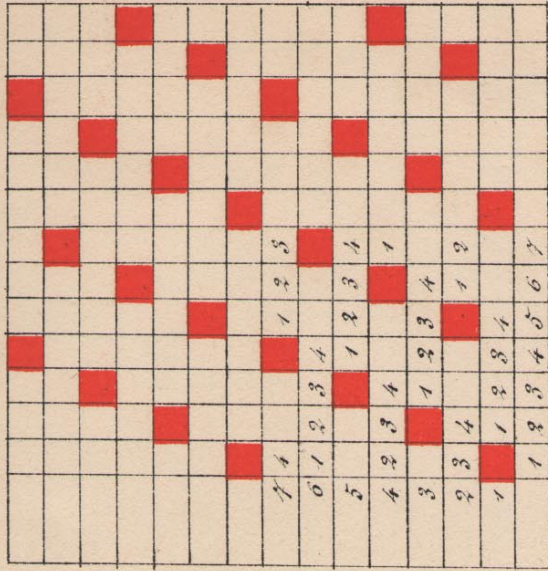


Fig. 34

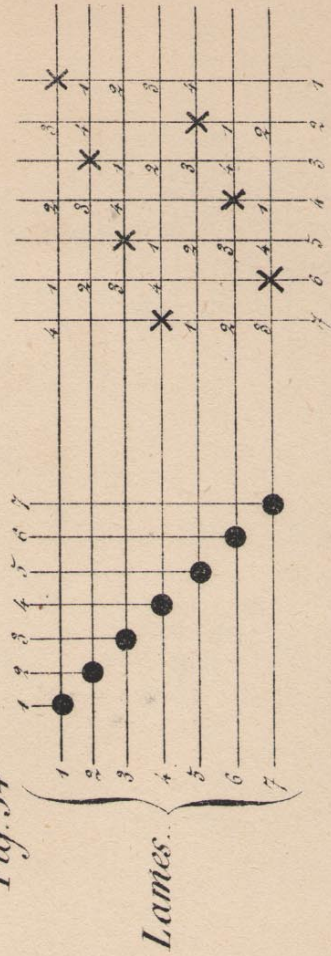




Fig. 38.

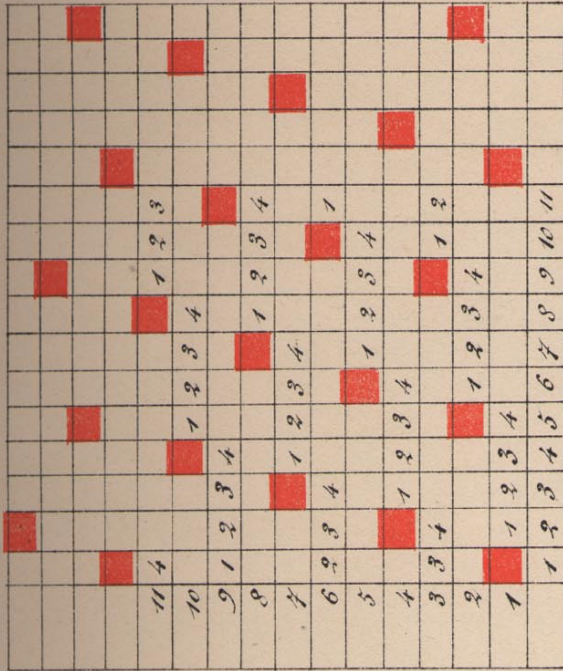


Fig. 37

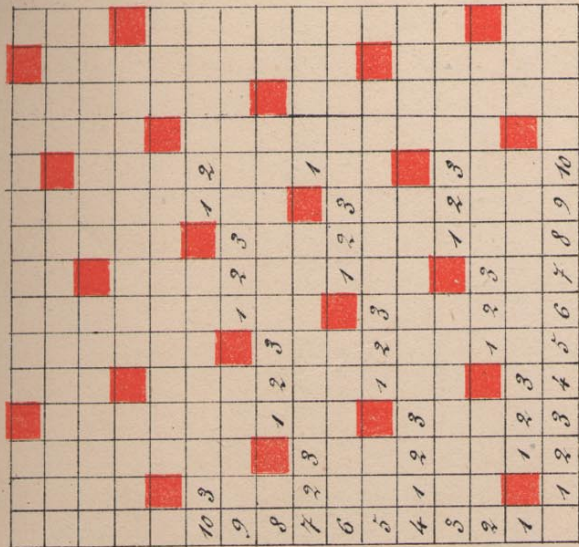


Fig. 38

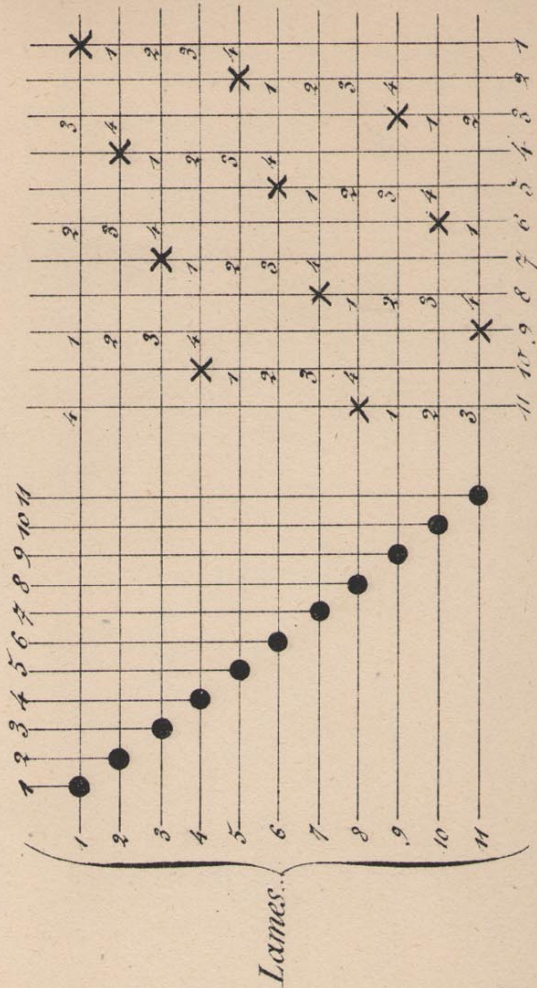


Fig. 37

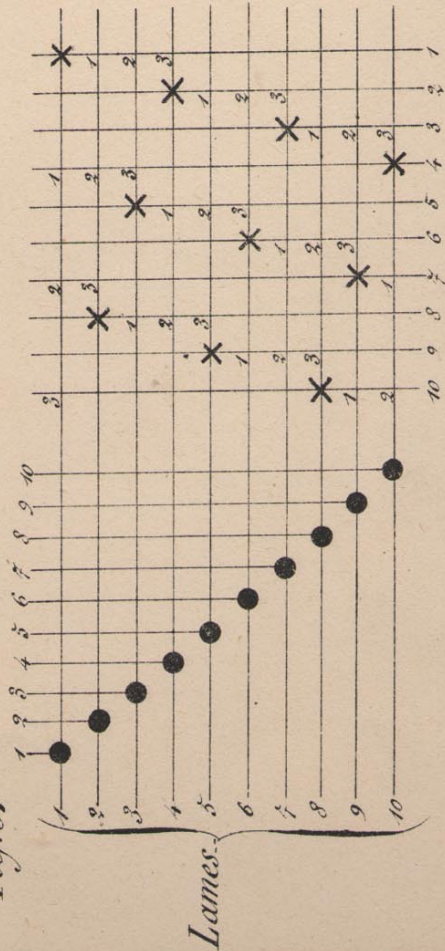






Fig. 41

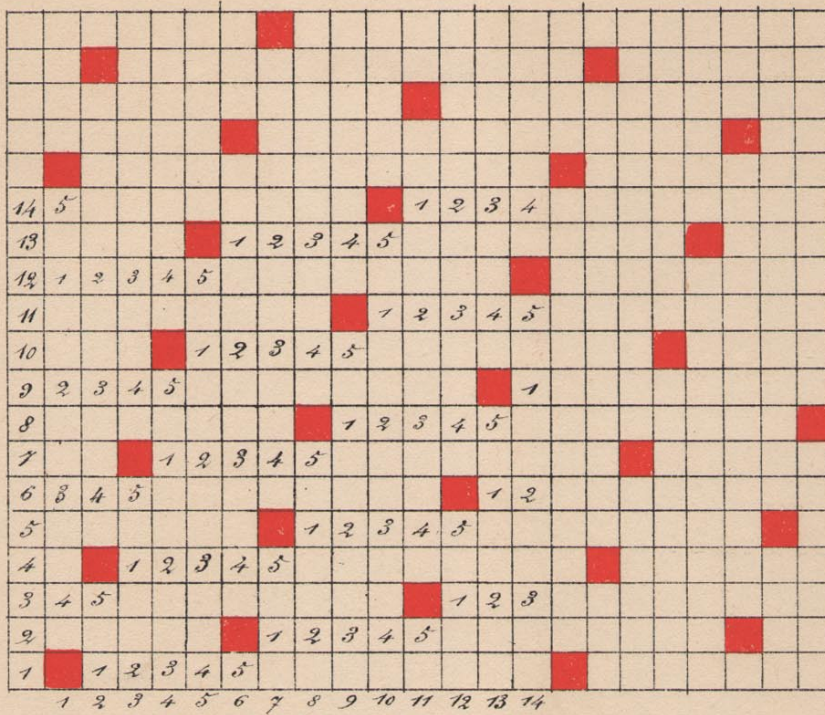


Fig. 41

