

Fig. 43.

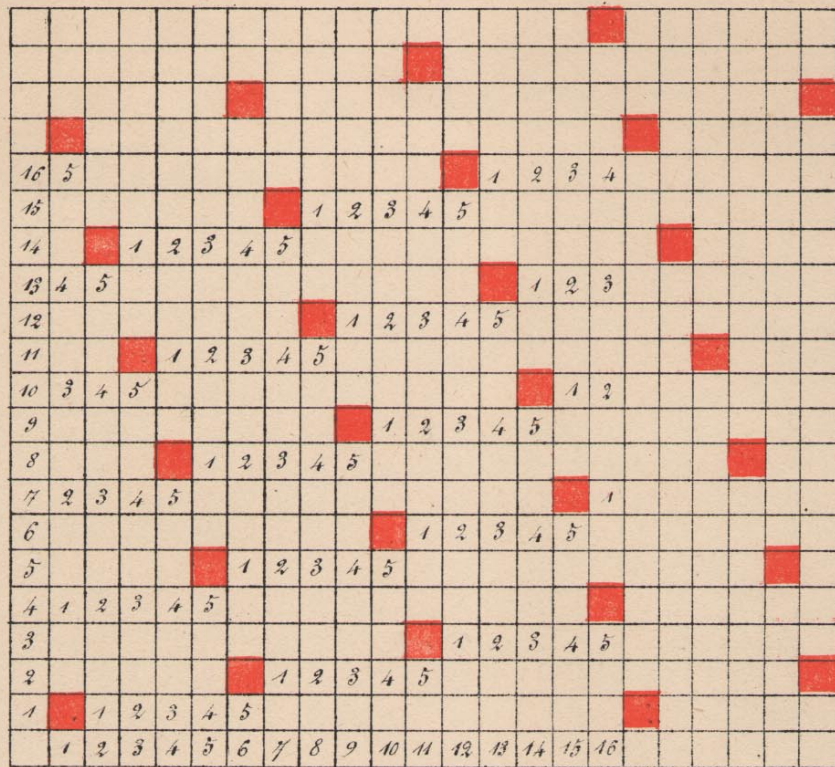


Fig. 43.

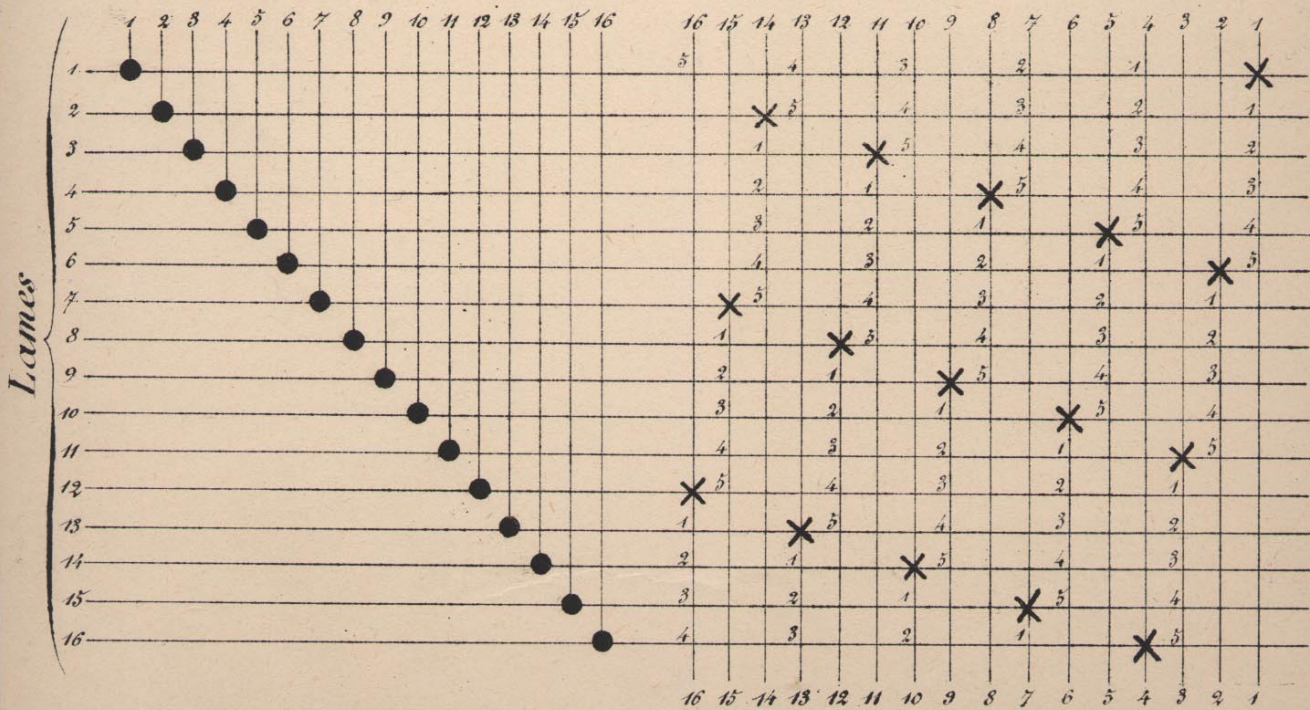


Fig. 44.

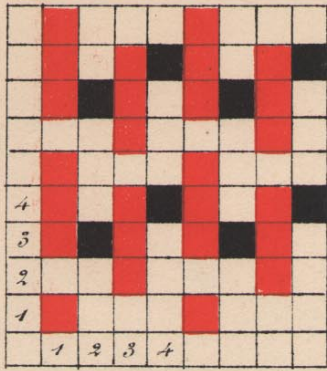


Fig. 45.

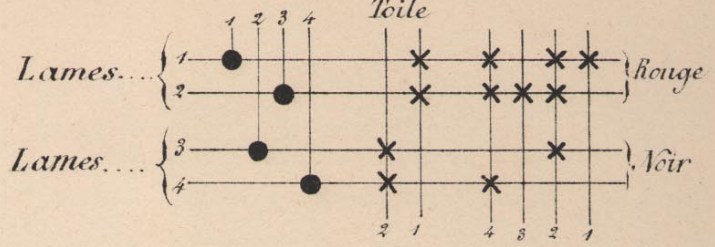


Fig. 44

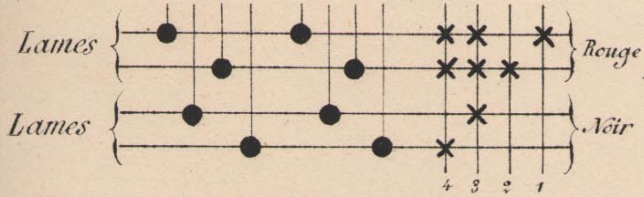


Fig. 46

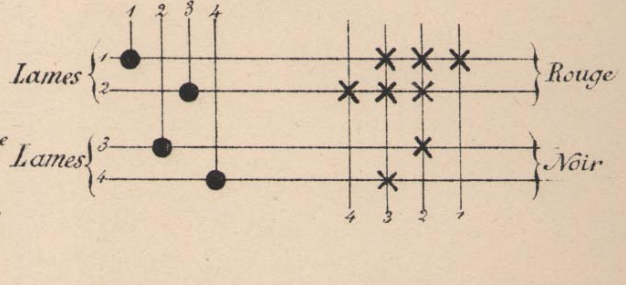


Fig. 47

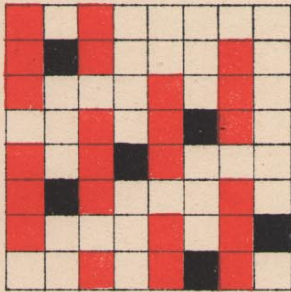


Fig. 48

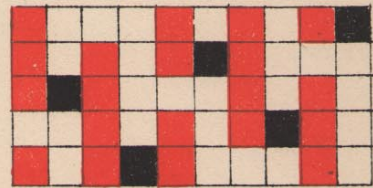


Fig. 47

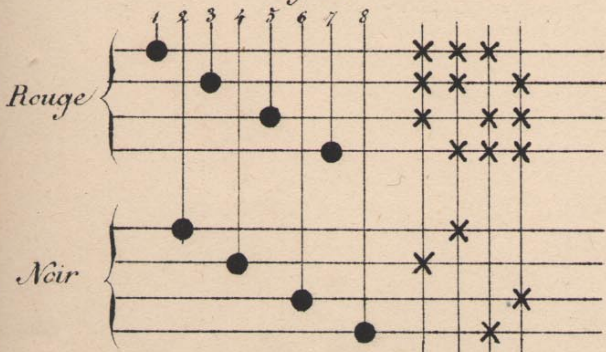


Fig. 48.

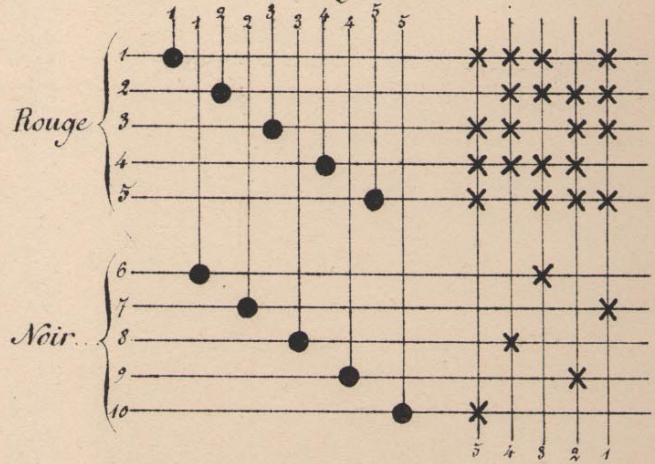


Fig. 49

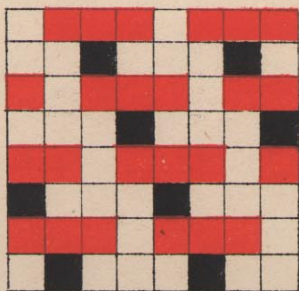


Fig. 49.

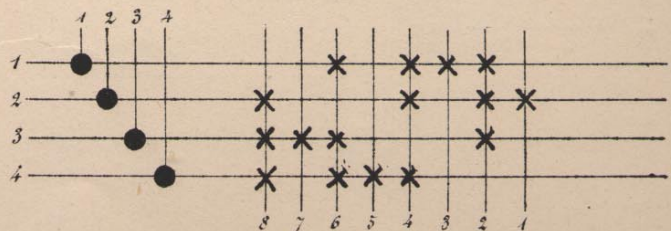


Fig. 50

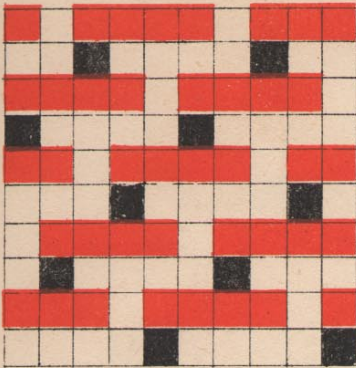


Fig. 50

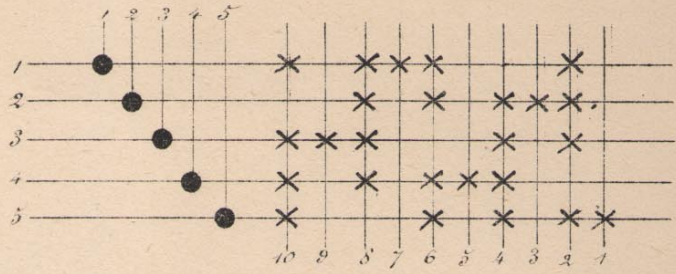


Fig. 51

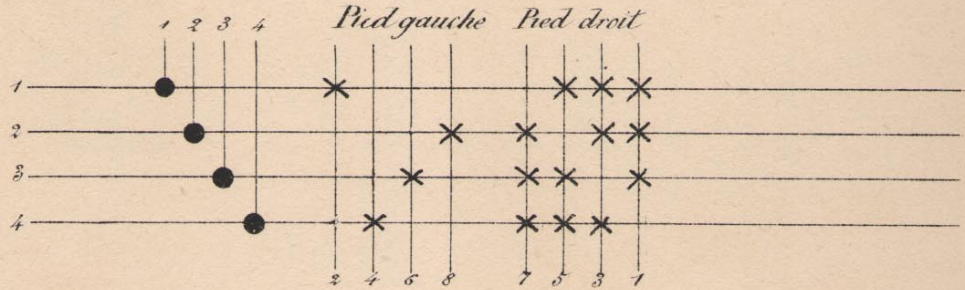


Fig. 52

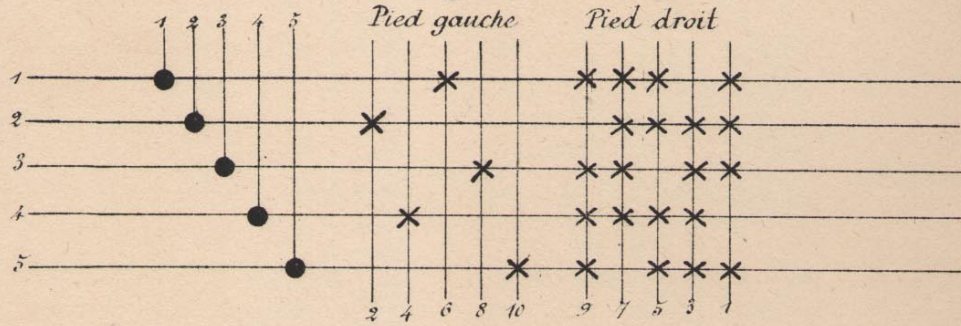


Fig. 53

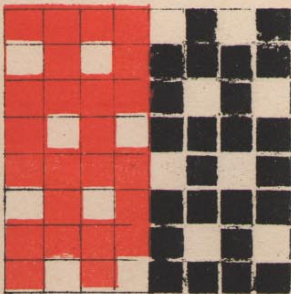


Fig. 53

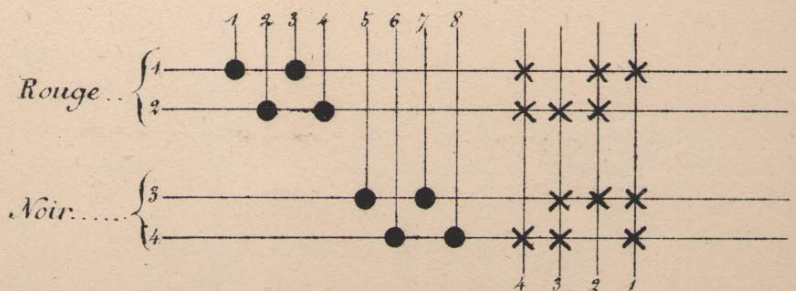


Fig. 54

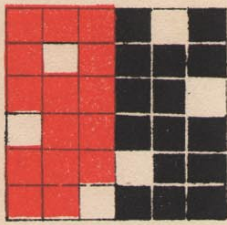


Fig. 54

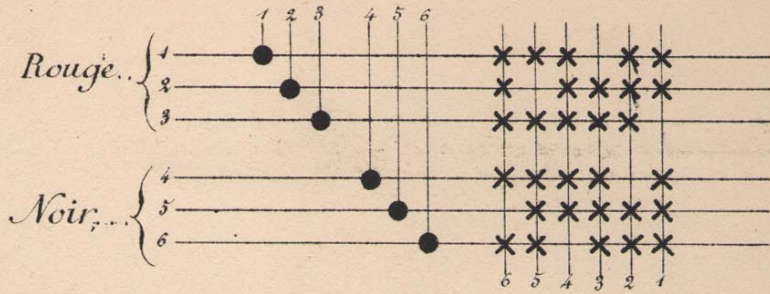


Fig. 55

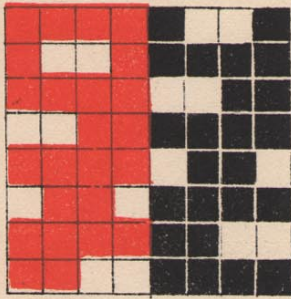


Fig. 55

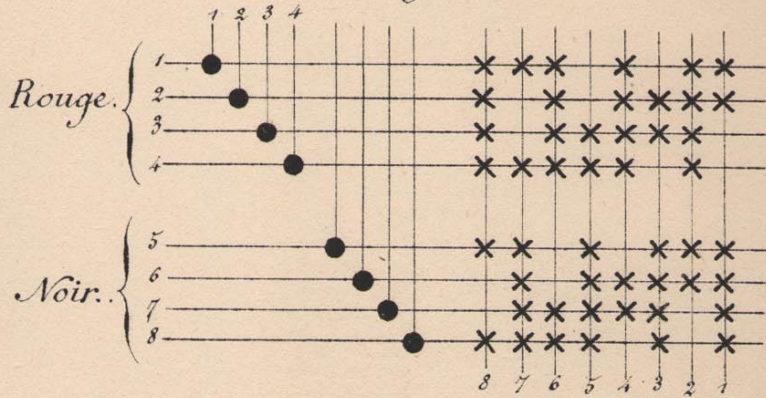


Fig. 56

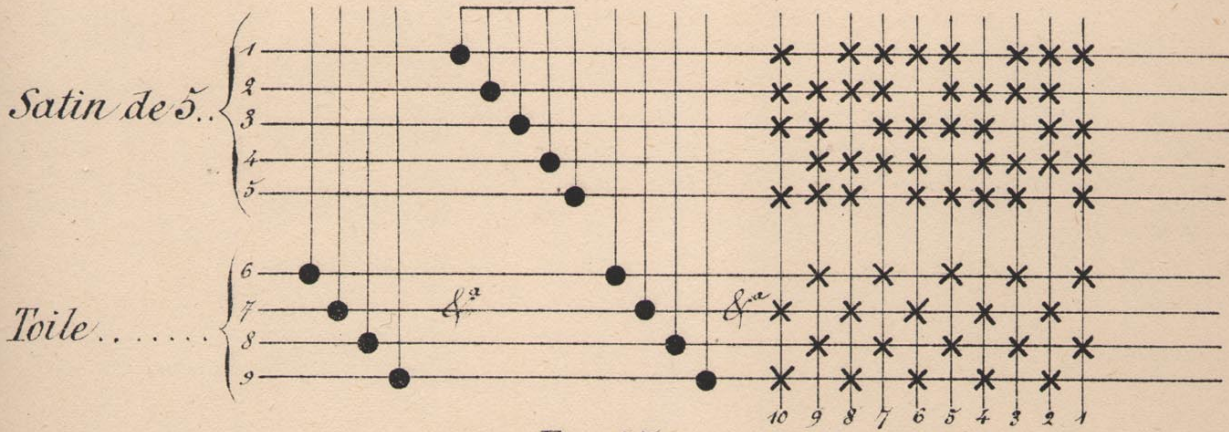


Fig. 57

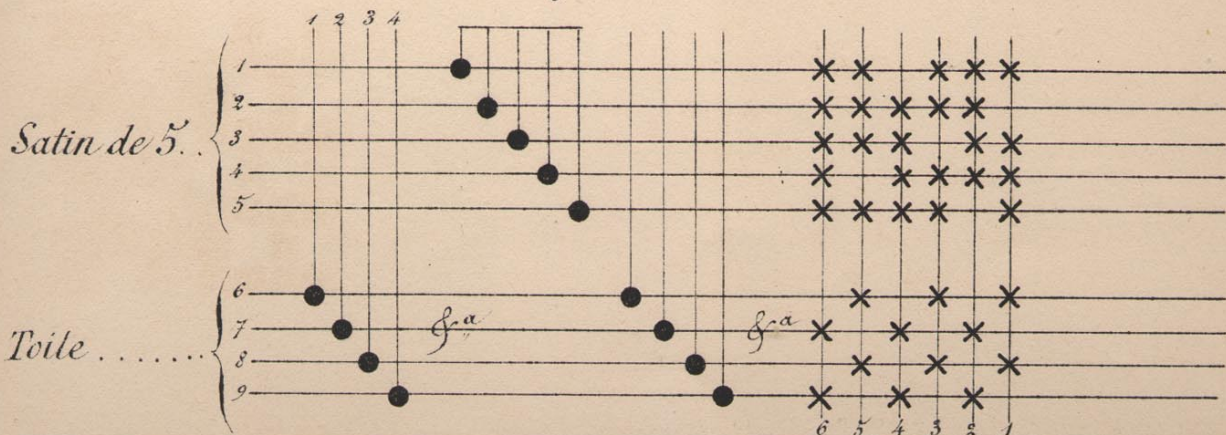


Fig. 58

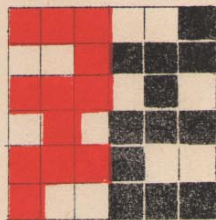


Fig. 59.

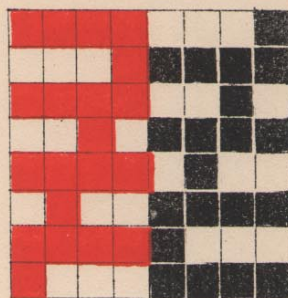


Fig. 58

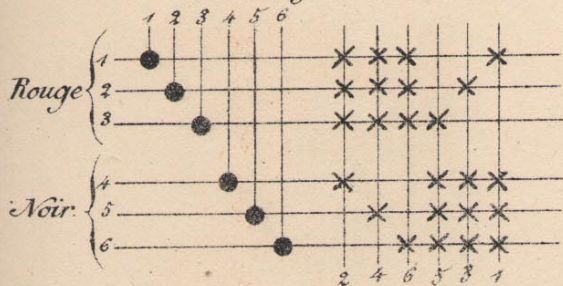


Fig. 59.

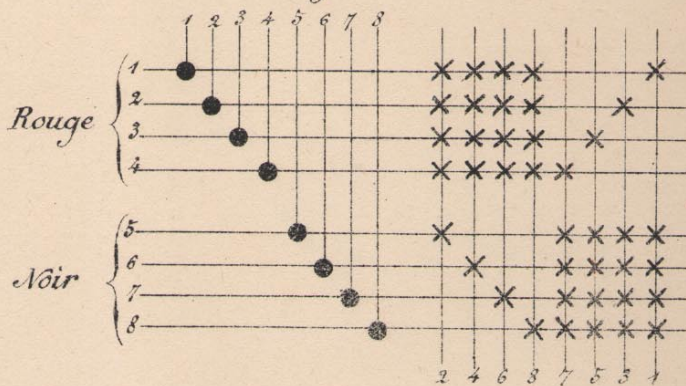


Fig. 60

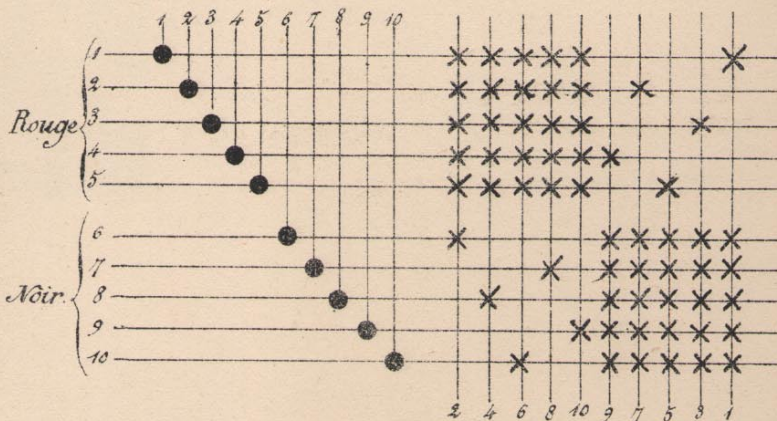
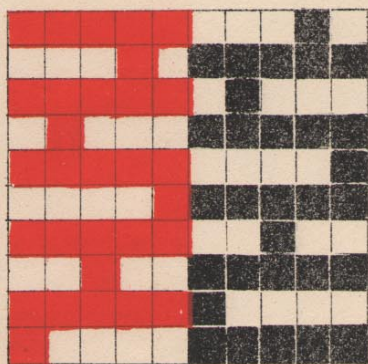


Fig. 61.

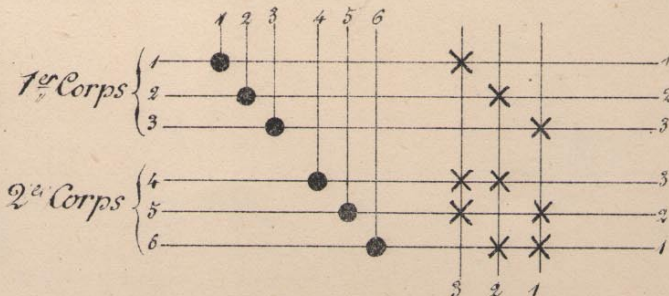
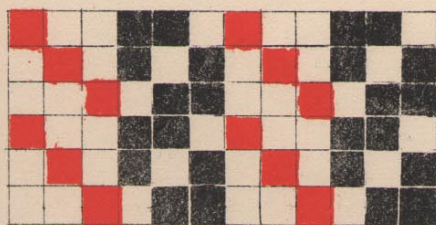


Fig. 62

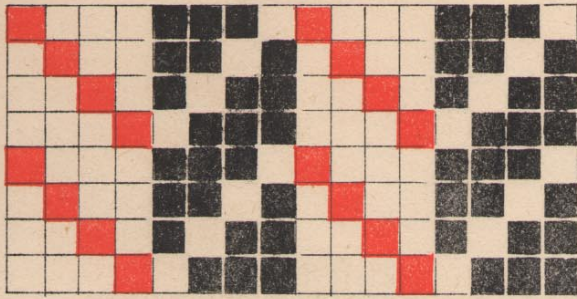


Fig. 62

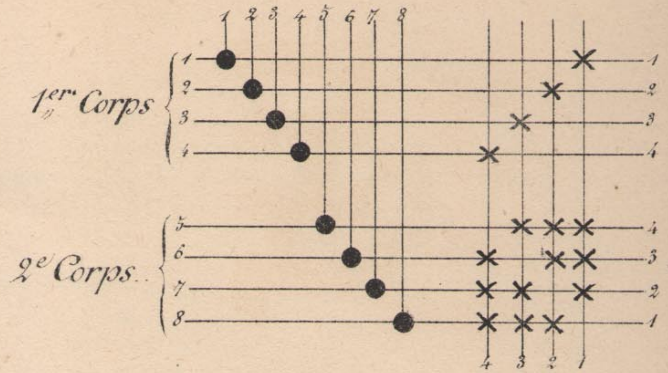
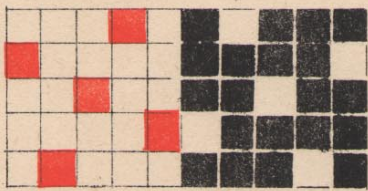


Fig. 63



1^{er} Corps
effet trame

2^e Corps
effet chaîne

Fig. 63

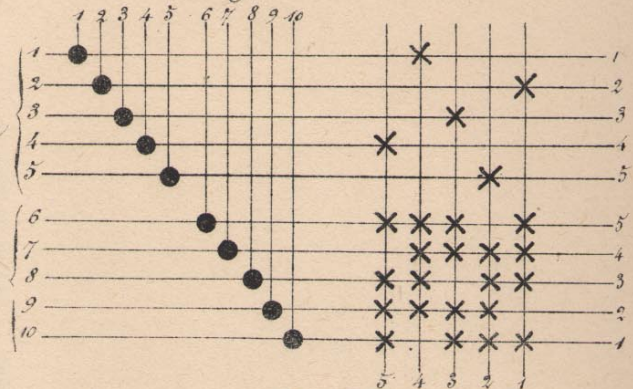


Fig. 64

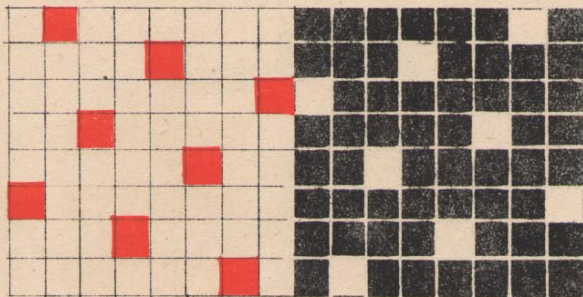


Fig. 65

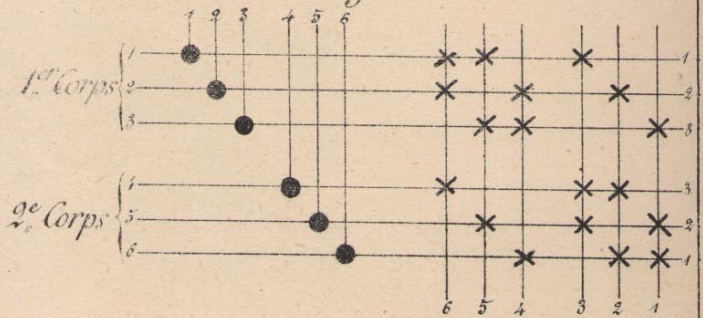


Fig. 64

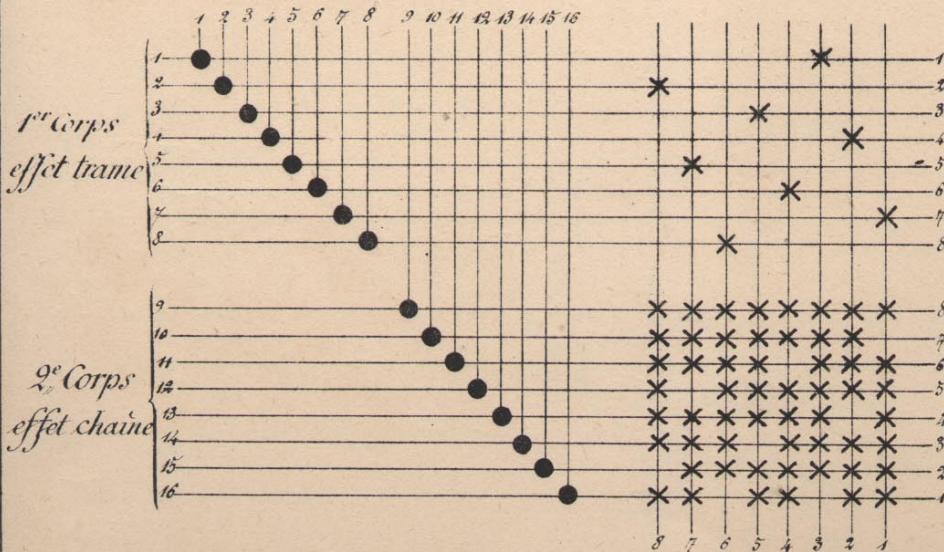


Fig. 65

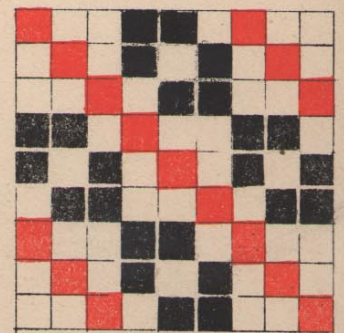


Fig. 66

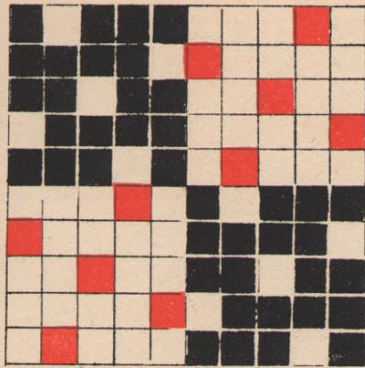


Fig. 66

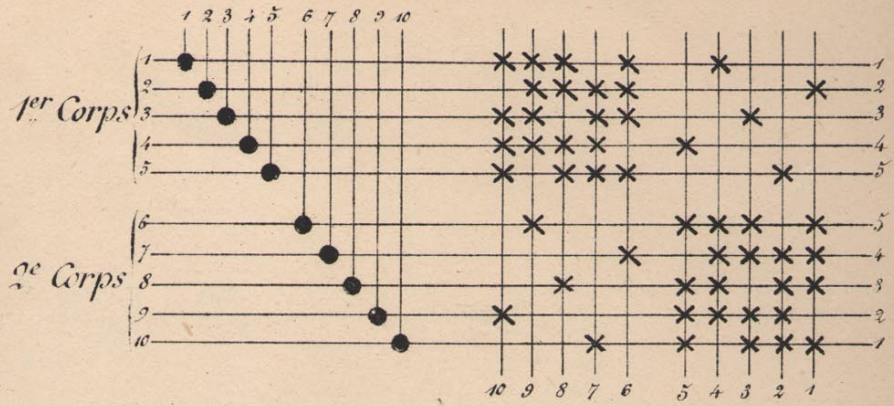


Fig. 67

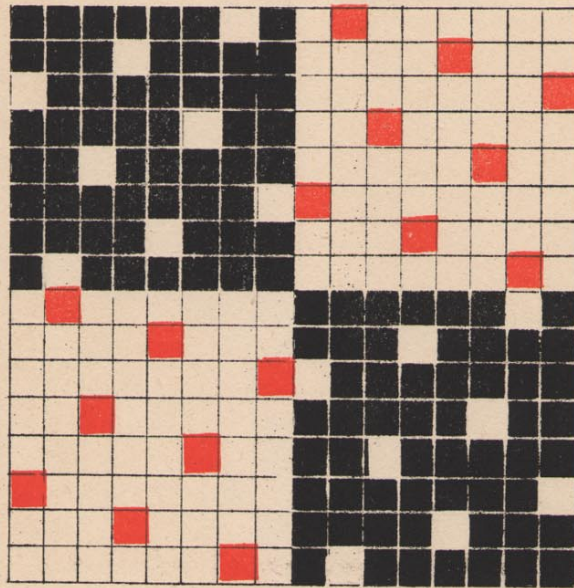


Fig. 67

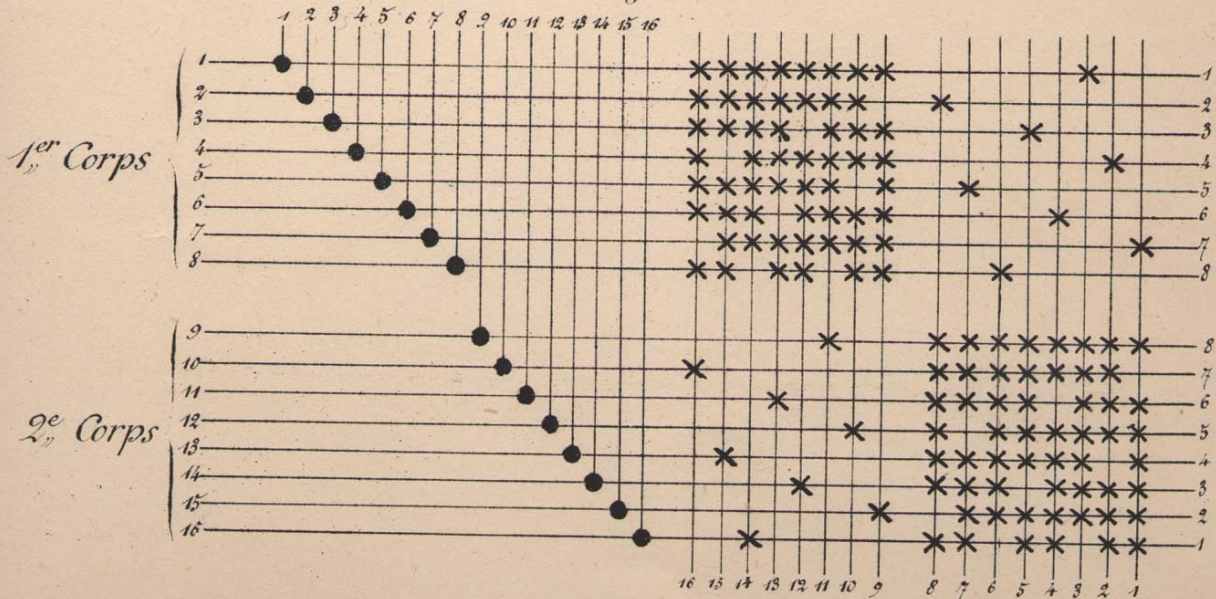


Fig. 68

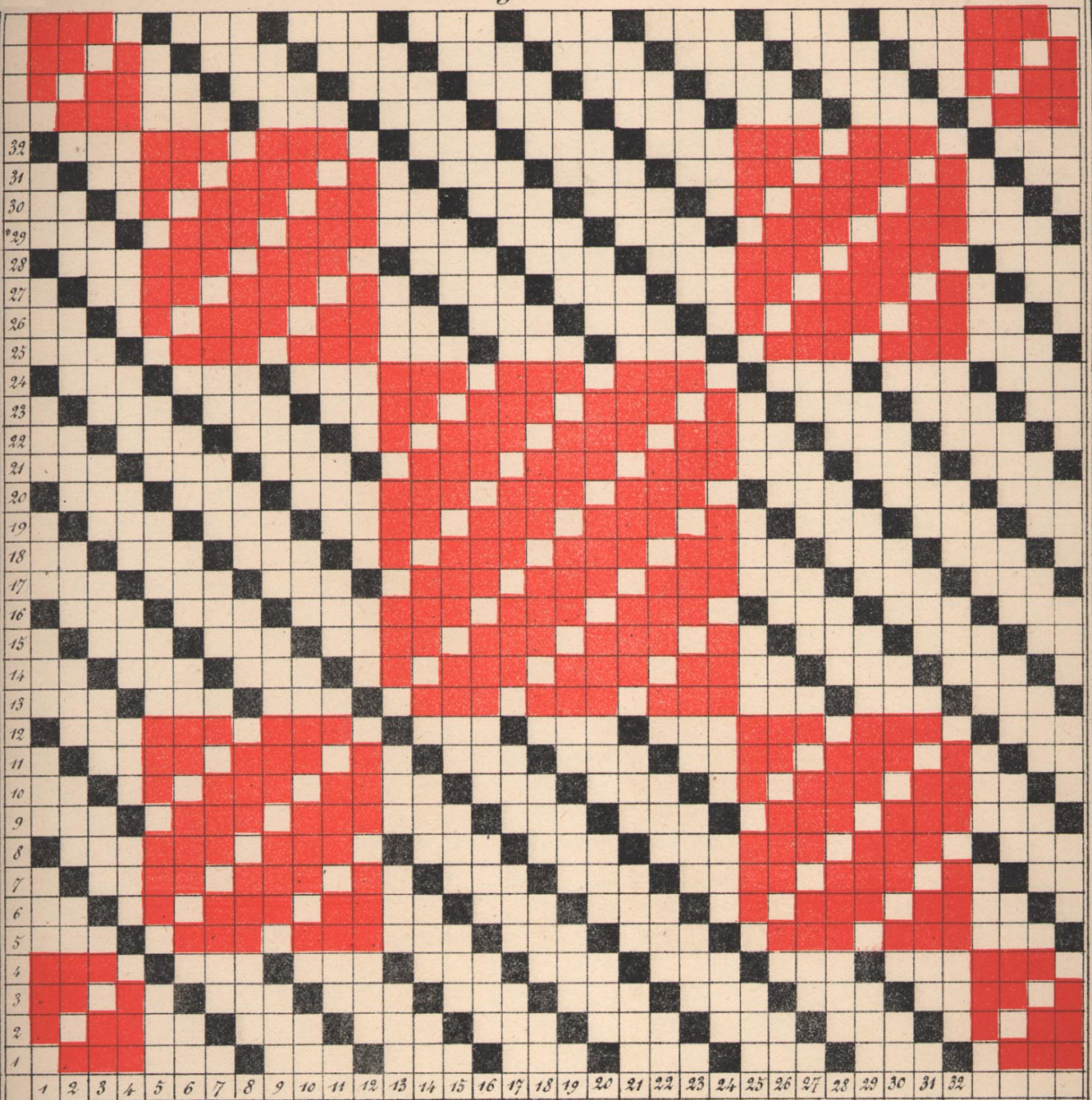


Fig. 69

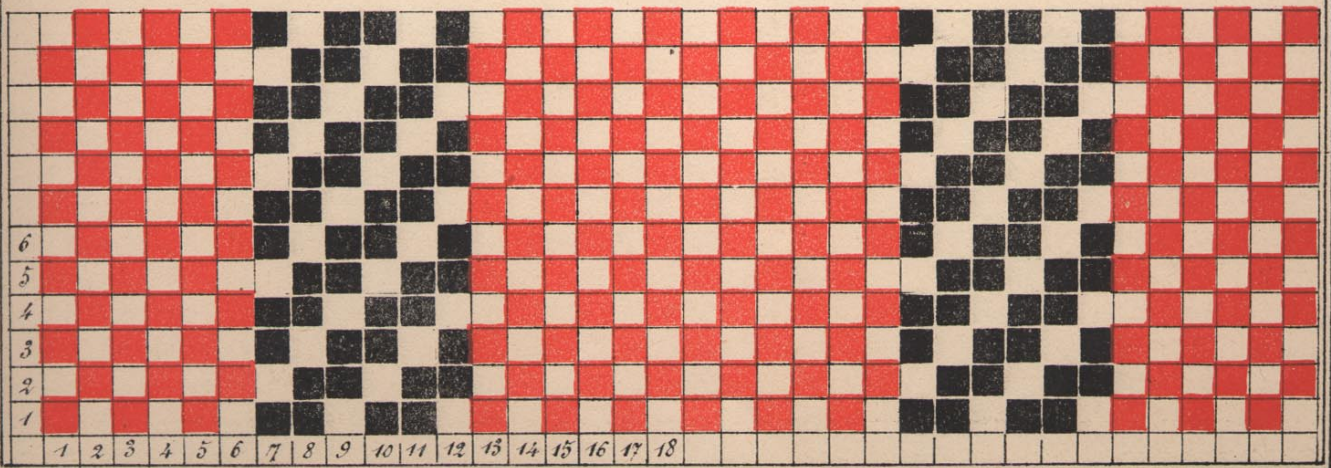


Fig. 68.

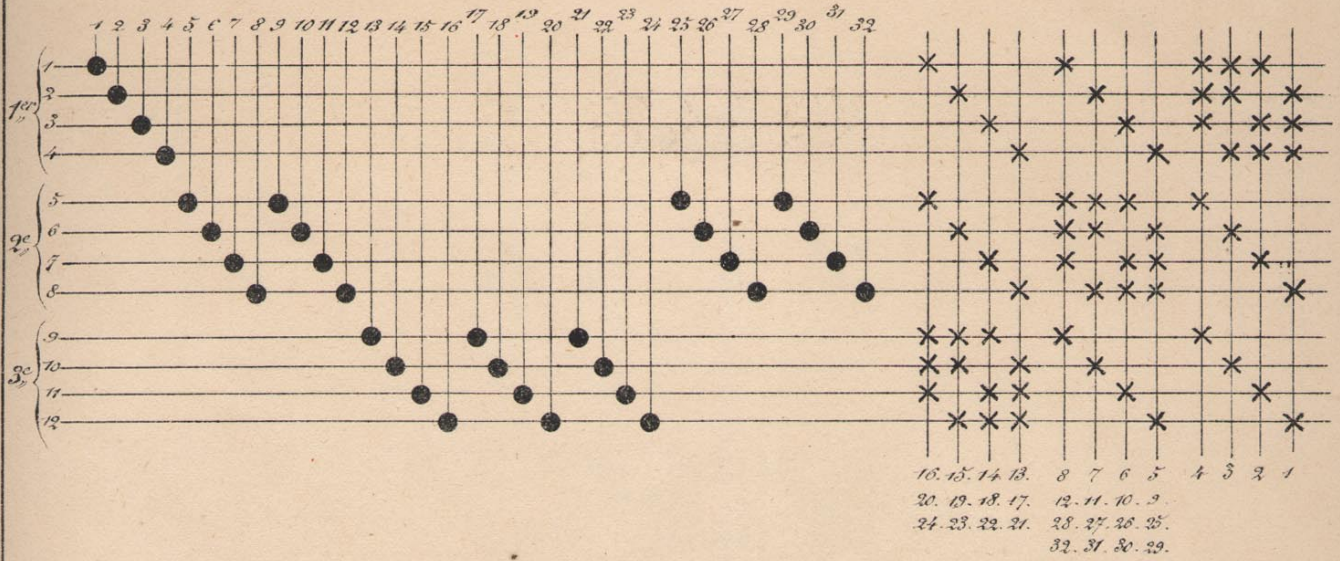


Fig. 69.

*Sergé de 3
effet Chaîne*

*Toile
sur 2 ou 4 lames*

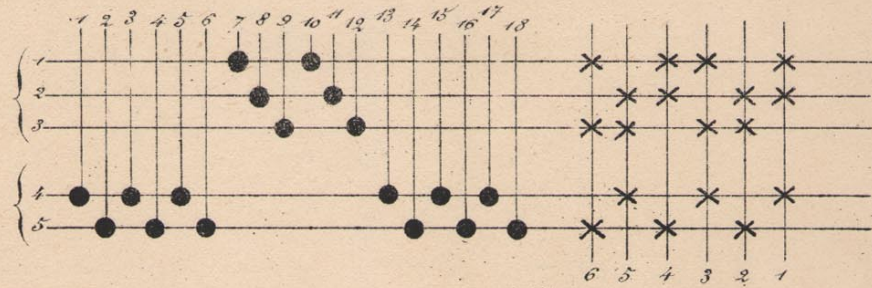


Fig. 70

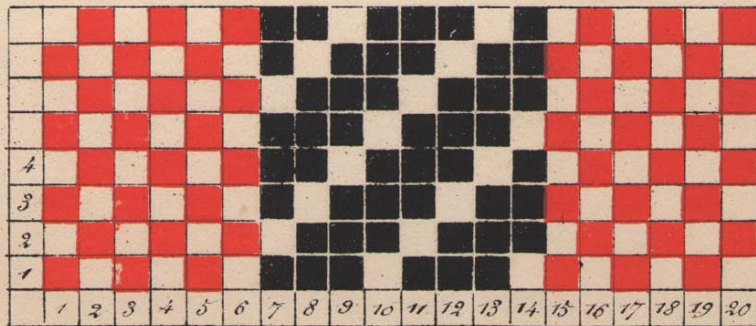


Fig. 70

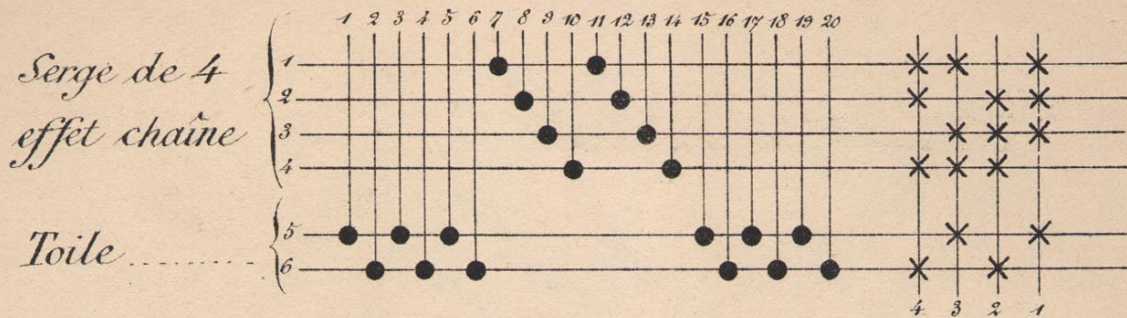


Fig. 71

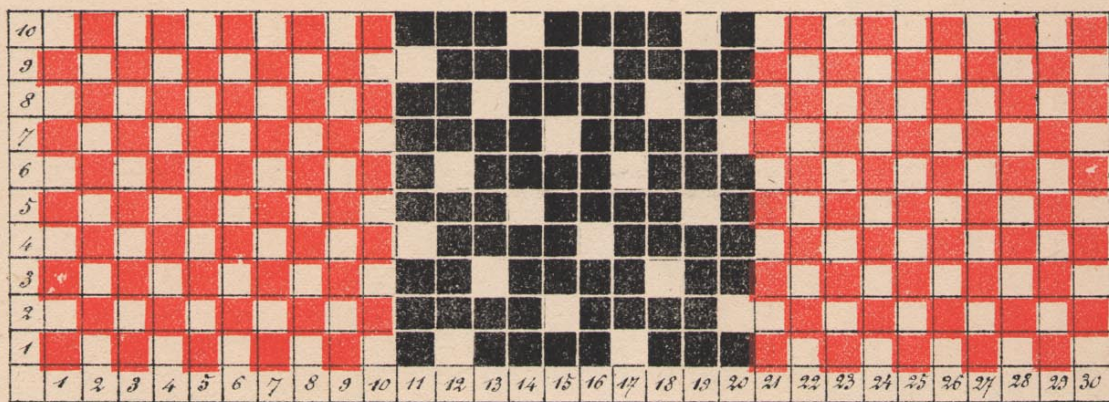


Fig. 71

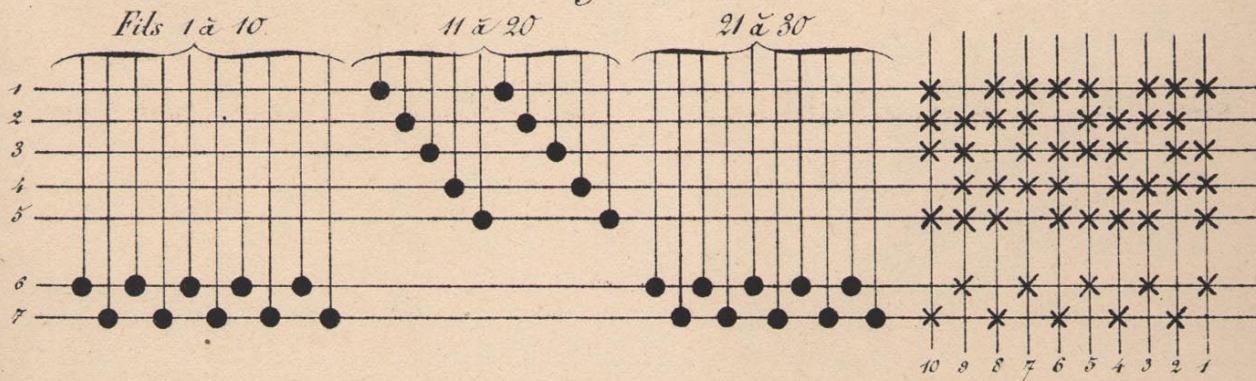


Fig. 72

Autre marcheure - Même Remettage

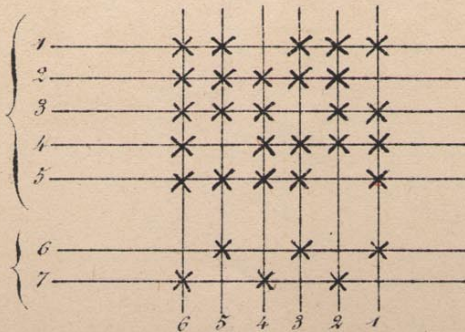


Fig. 73

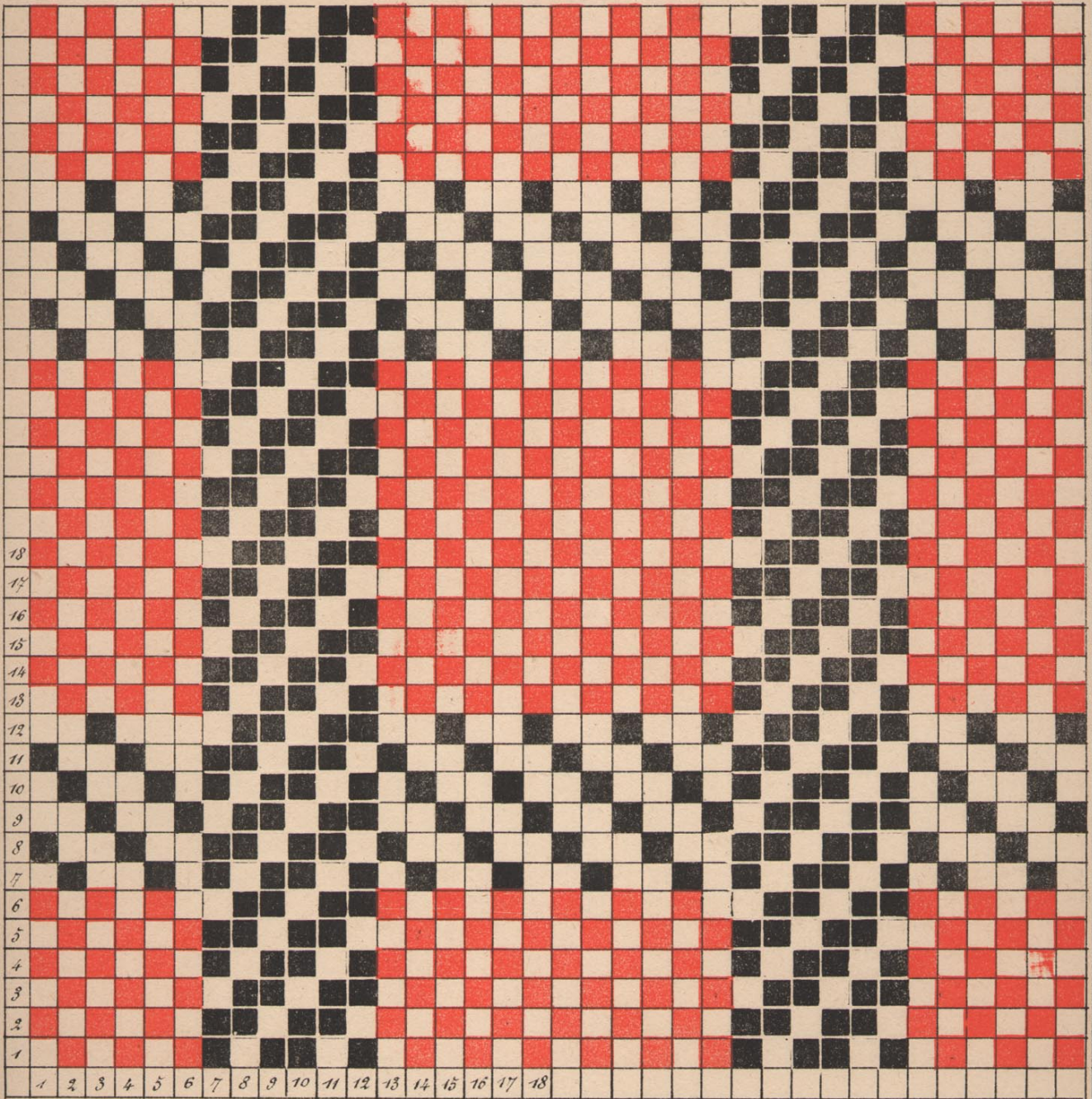


Fig. 73

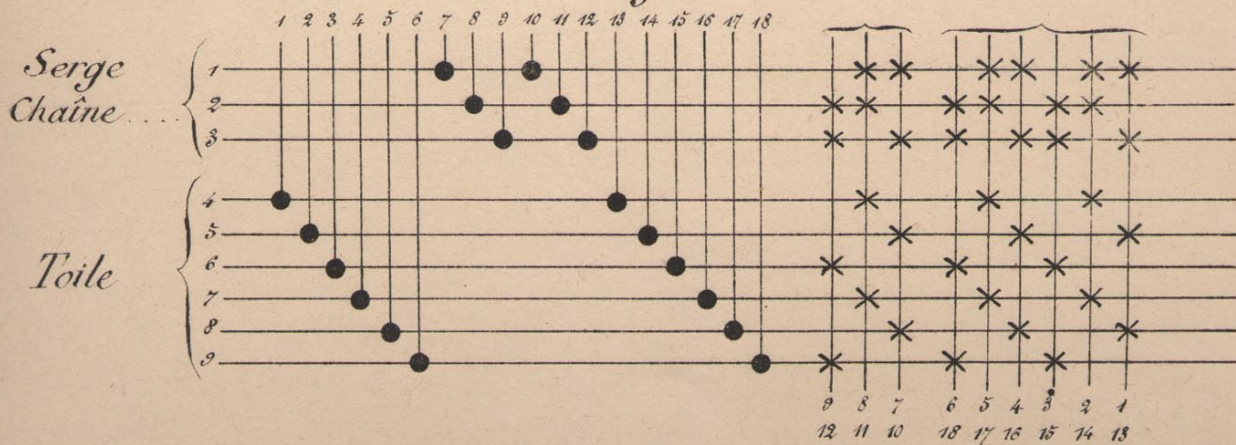


Fig. 74

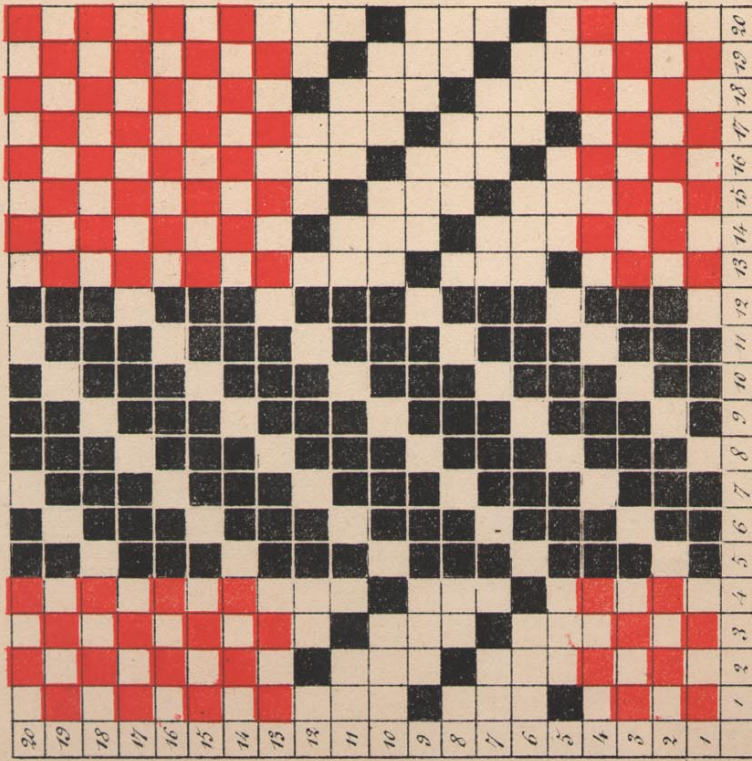


Fig. 74

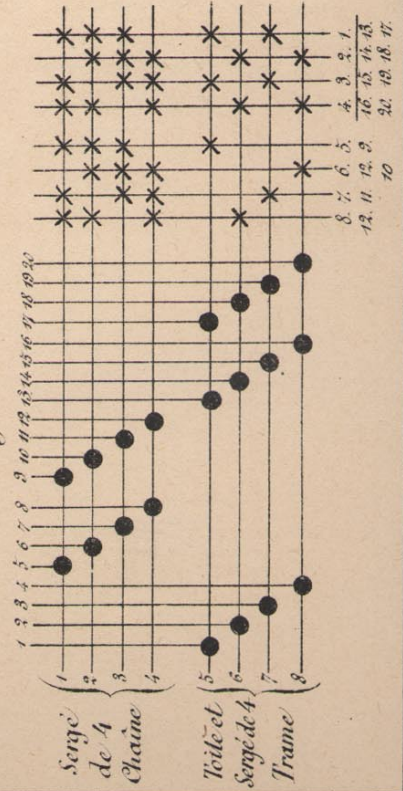


Fig. 75

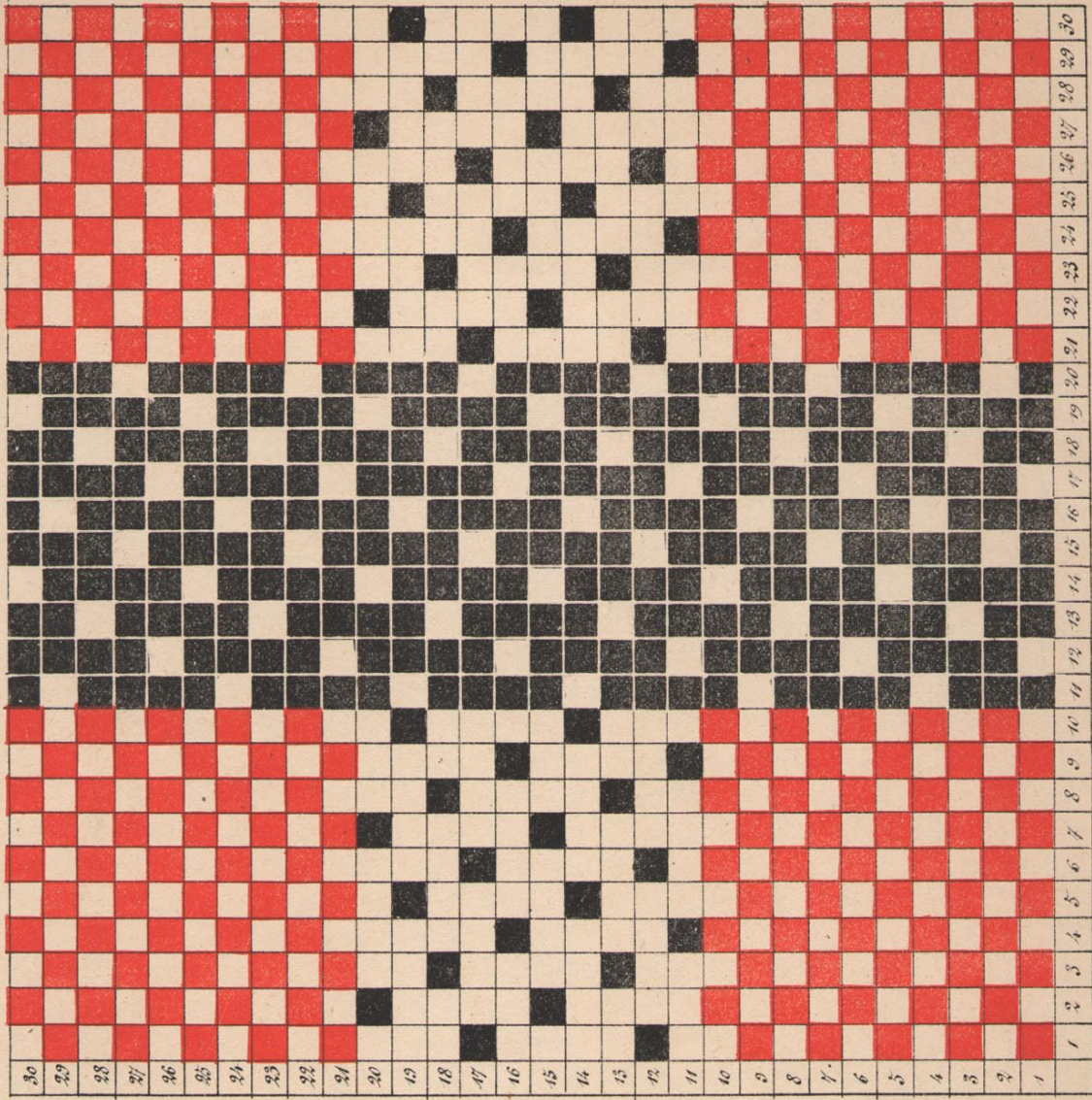


Fig. 75

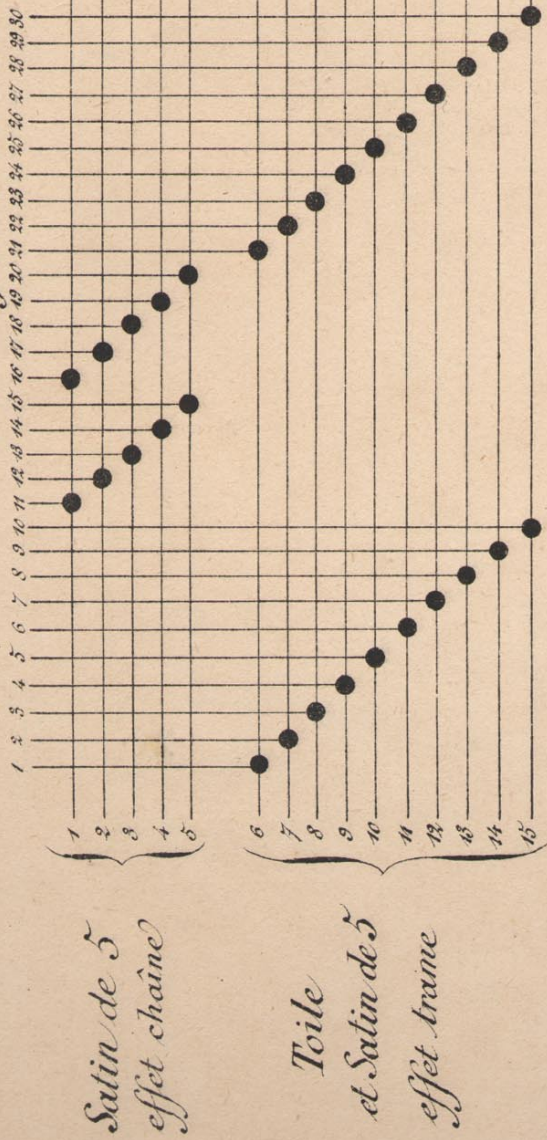
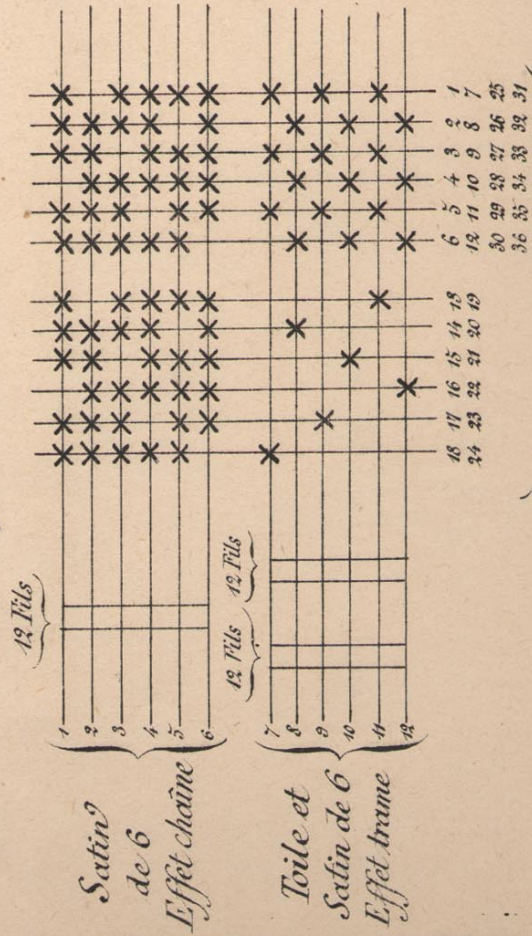
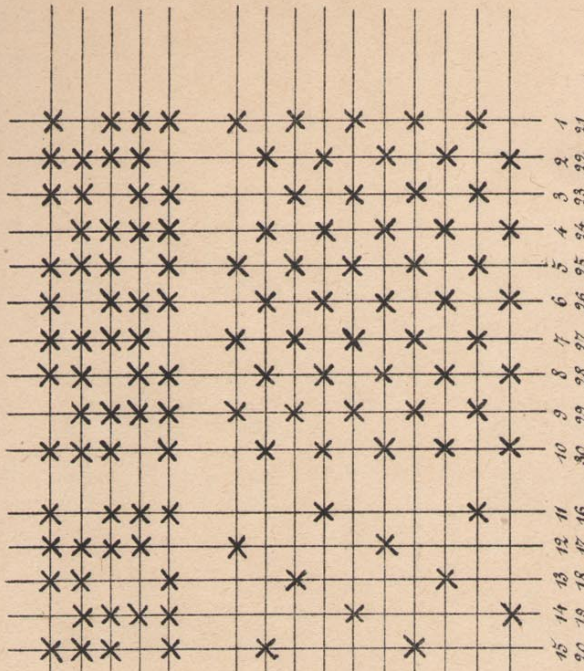


Fig. 76

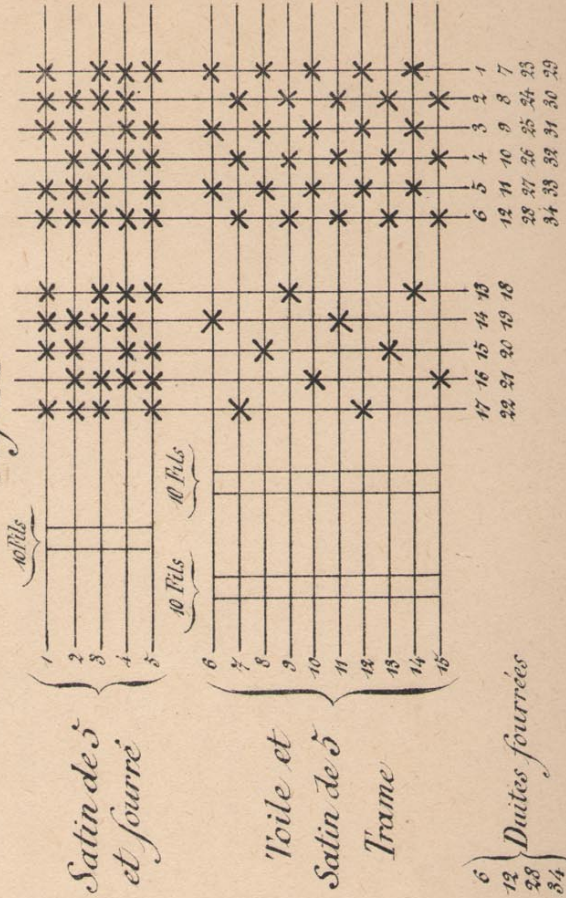


A répéter constamment ces deux marches.



A répéter constamment ces deux marches.

Fig. 77



Duites fourrées

Fig. 78

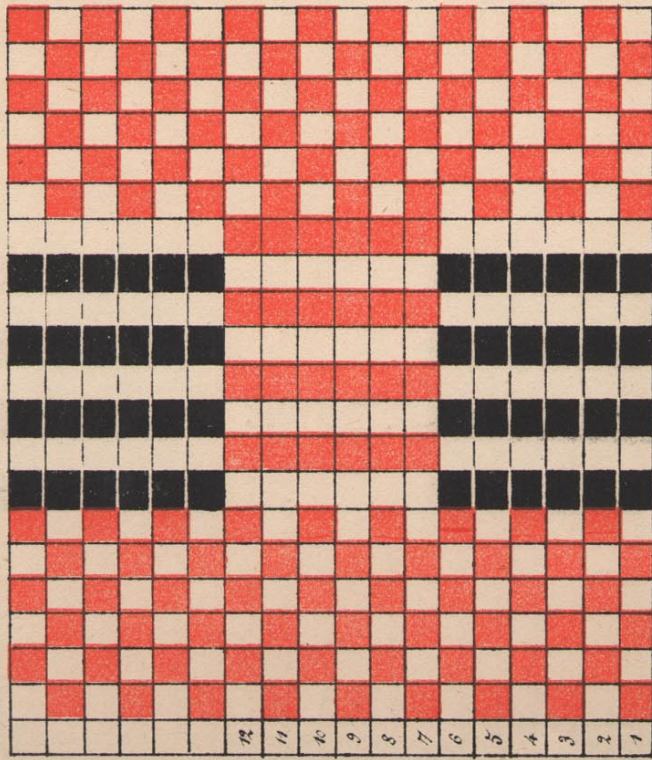


Fig. 79

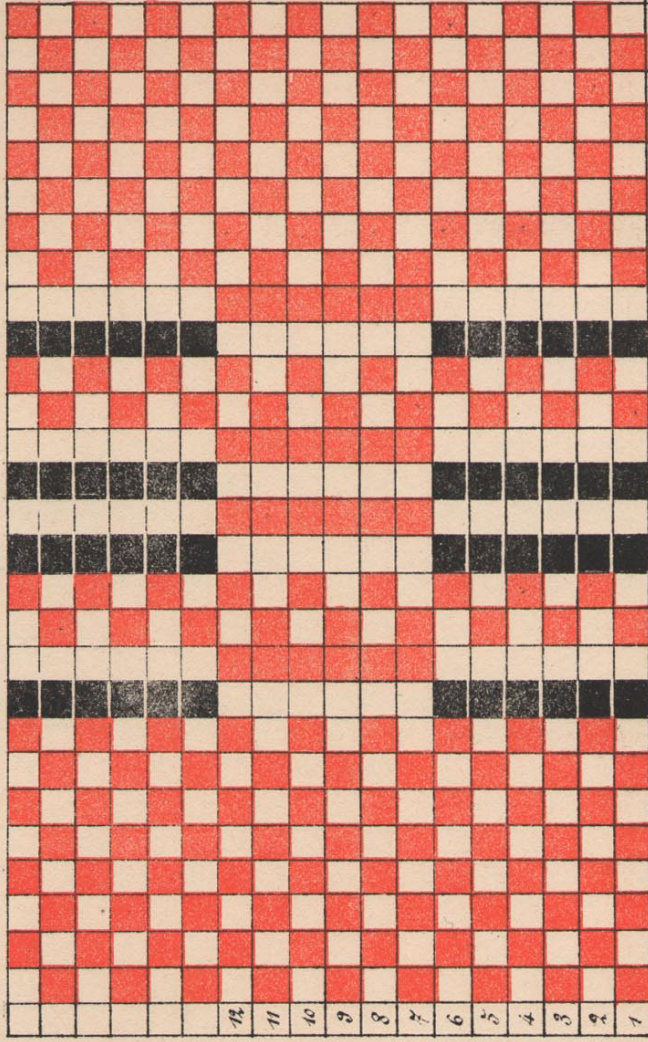


Fig. 78

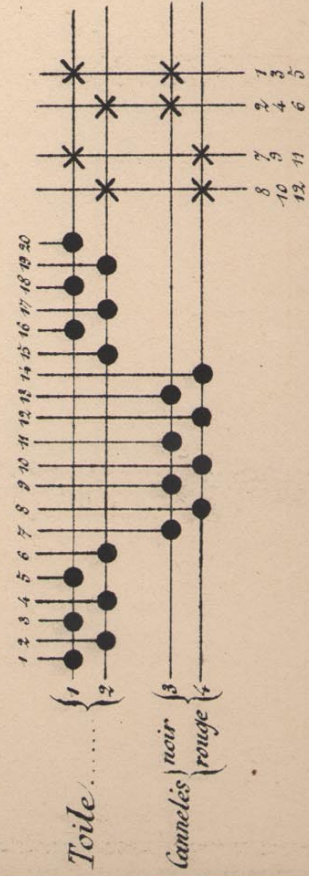


Fig. 79

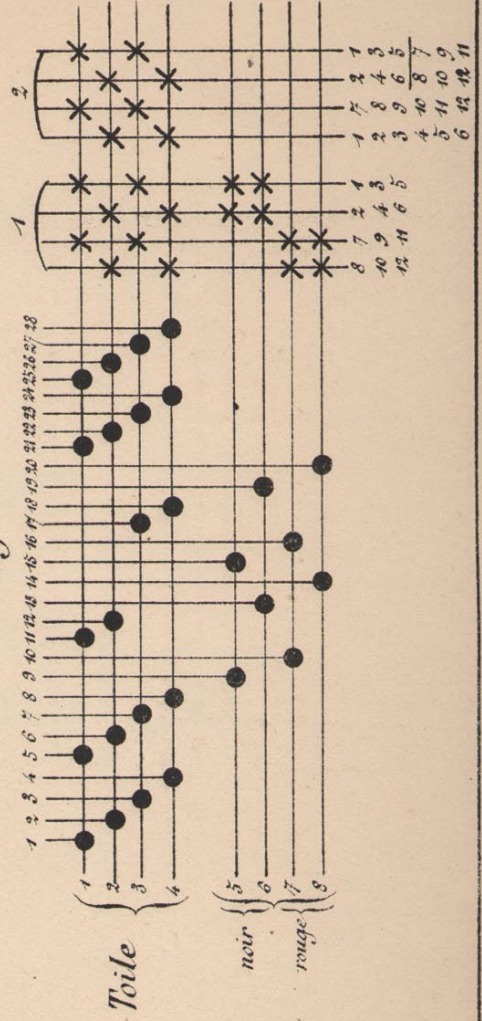


Fig. 81

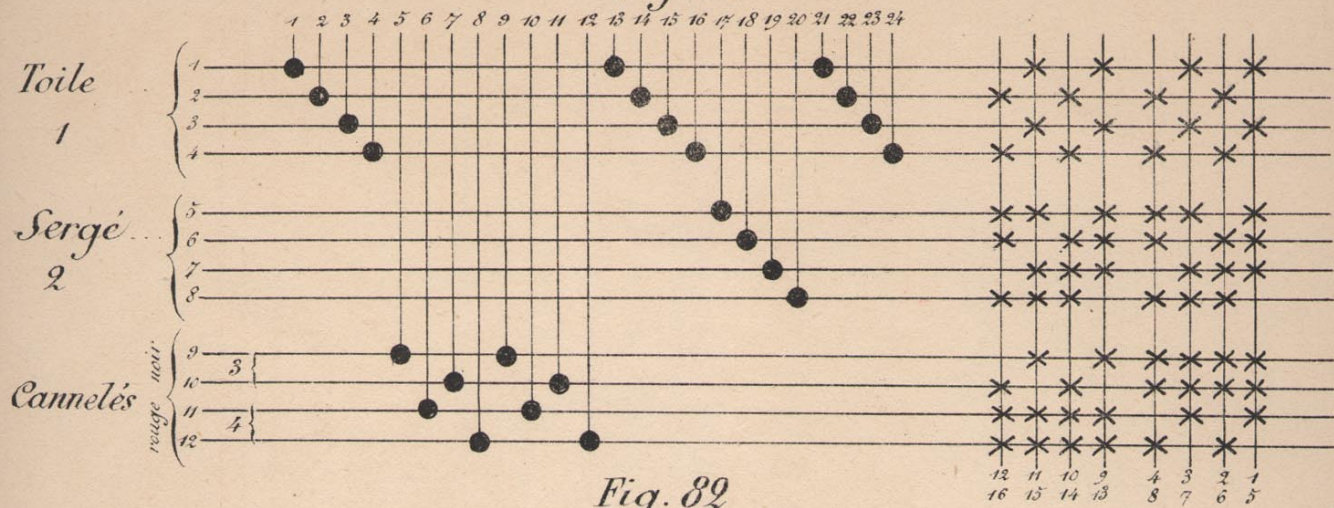


Fig. 82

Disposition servant seulement d'Exercice

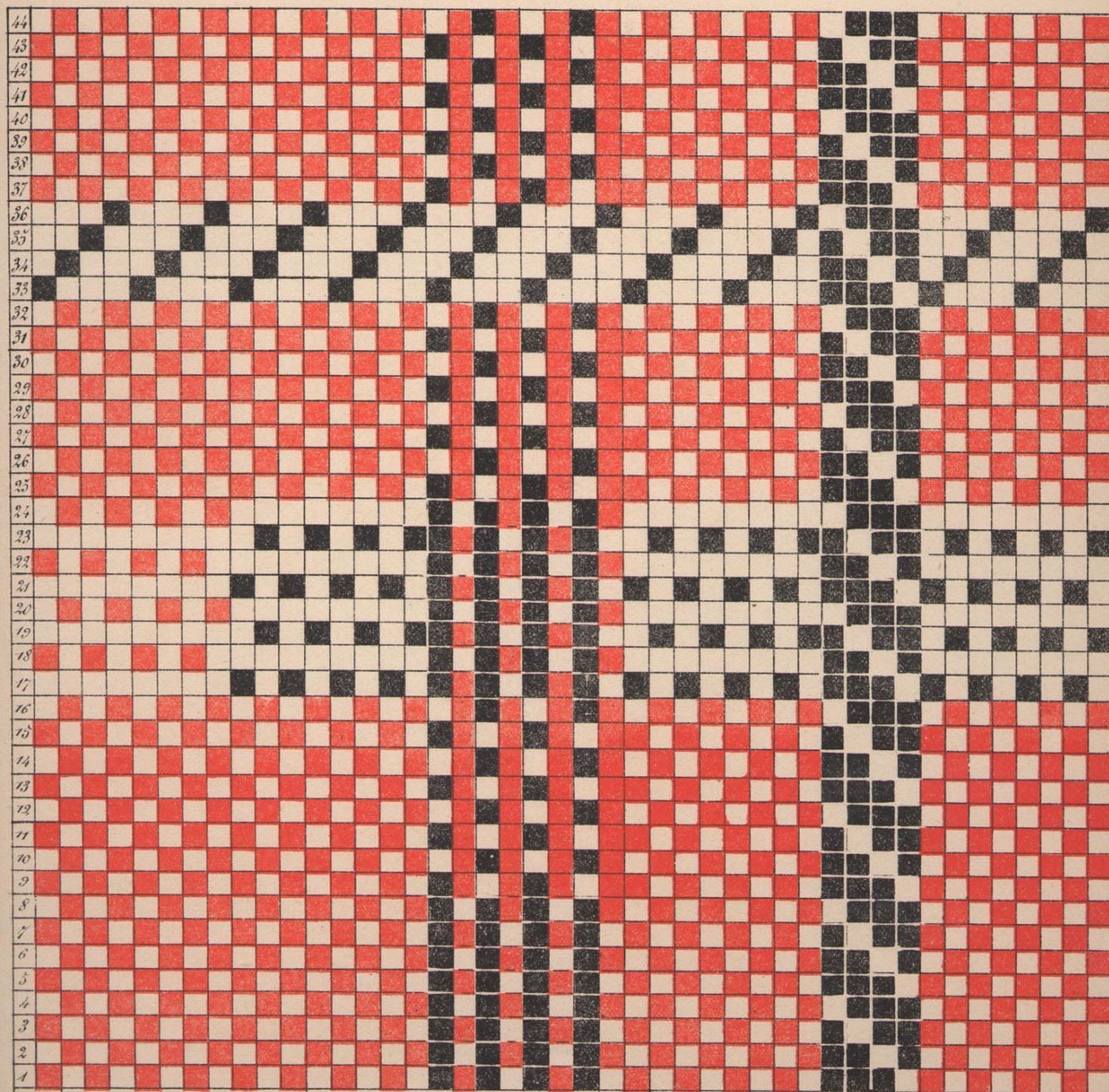


Fig. 82

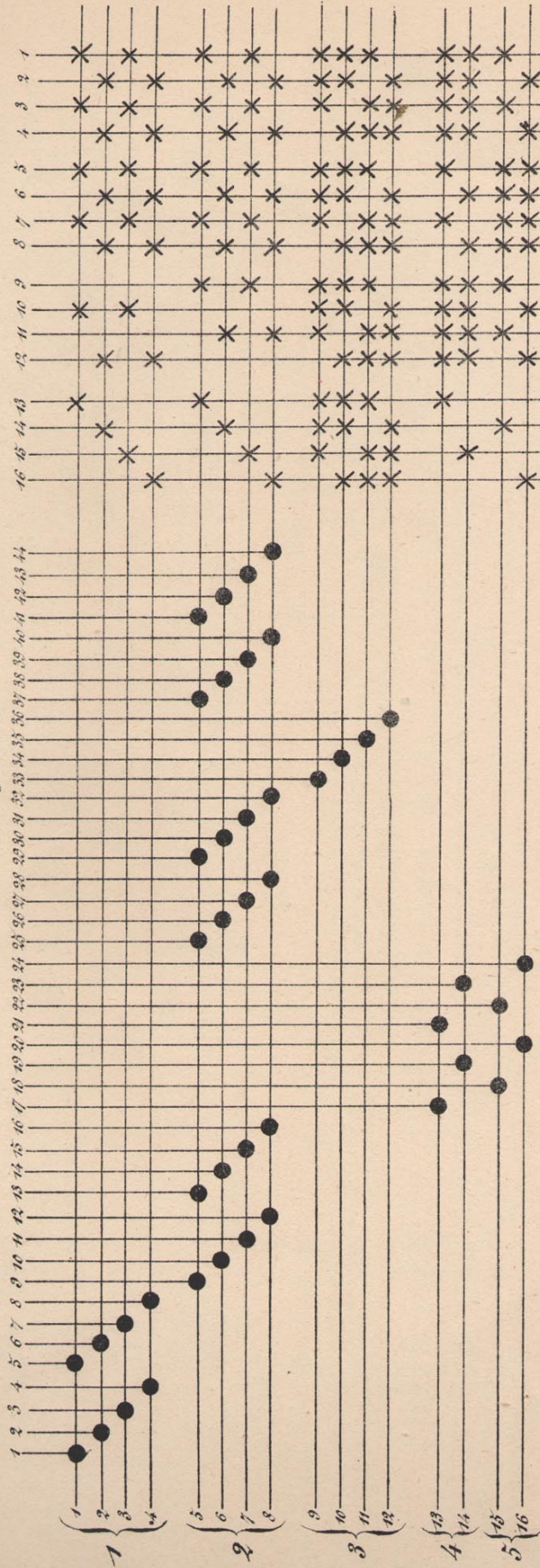


Fig. 83.

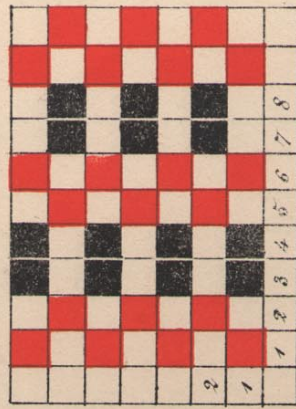


Fig. 83

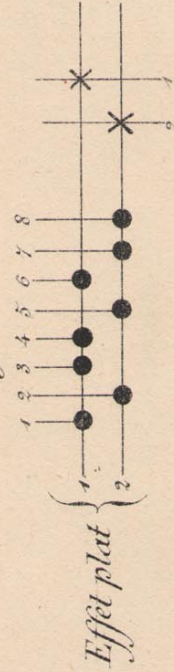


Fig. 84

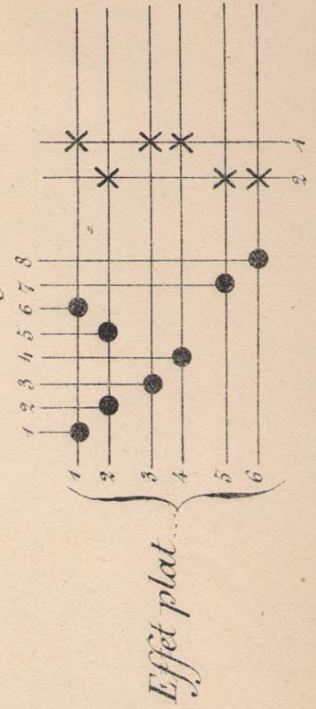


Fig. 85

Effet rond 3 et 4 même lisse ~ 7 et 8 même lisse

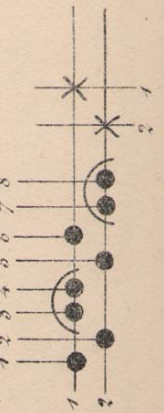


Fig. 86

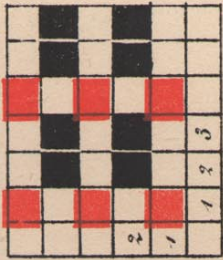


Fig. 86



Fig. 87



Fig. 88



Fig. 92

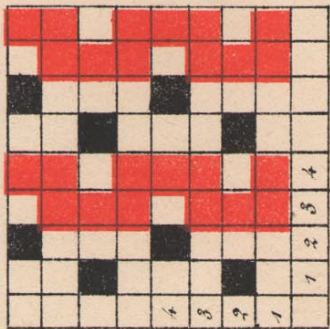


Fig. 92

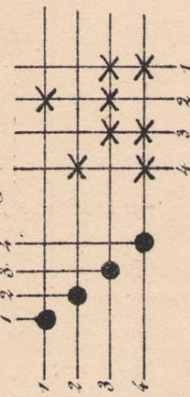


Fig. 91



Fig. 90

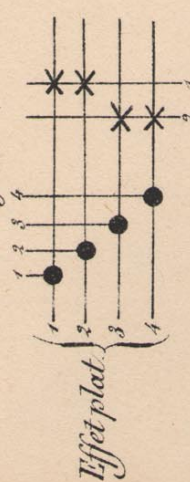


Fig. 89



Fig. 93

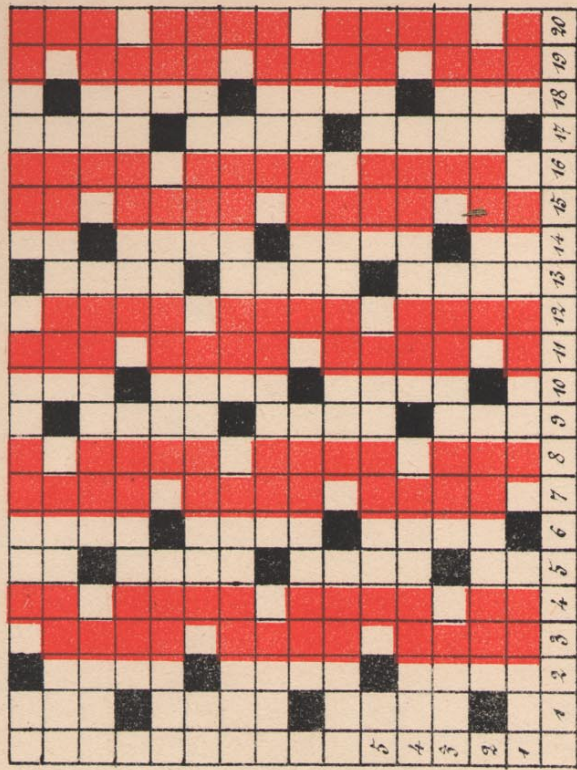


Fig. 93

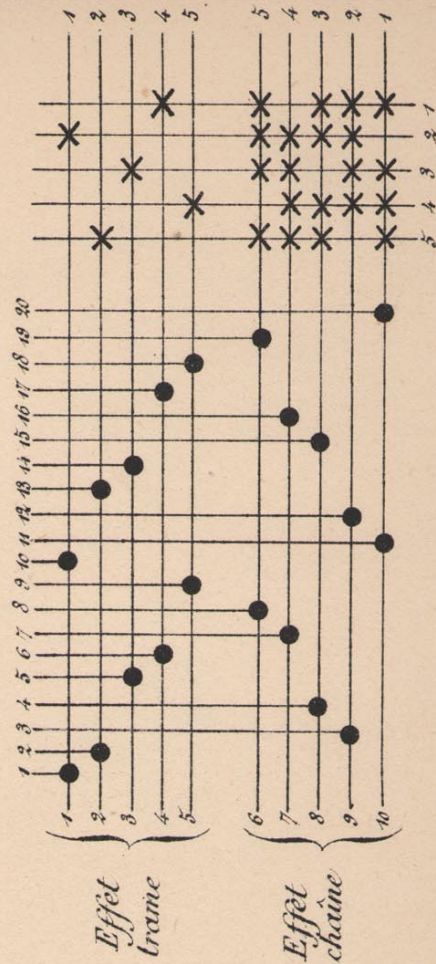


Fig. 89

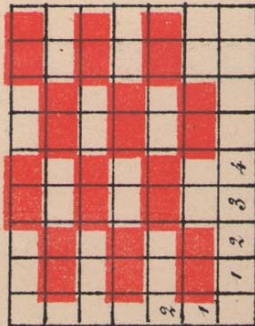


Fig. 94

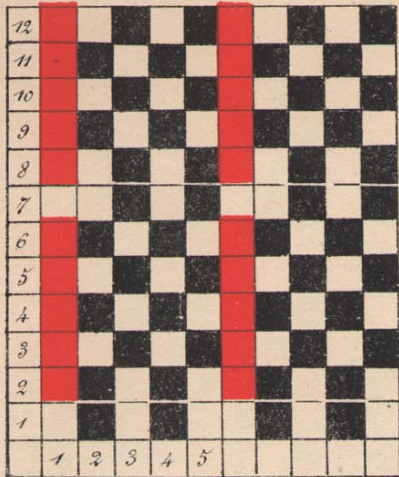


Fig. 94

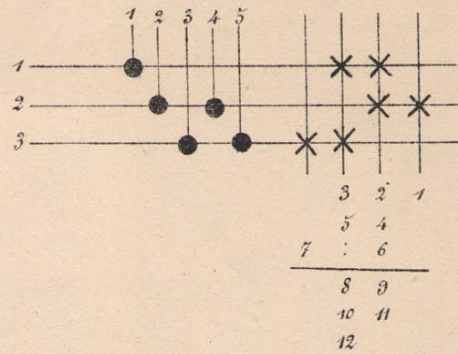


Fig. 95

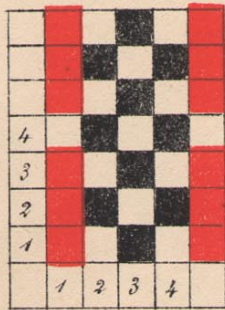


Fig. 95

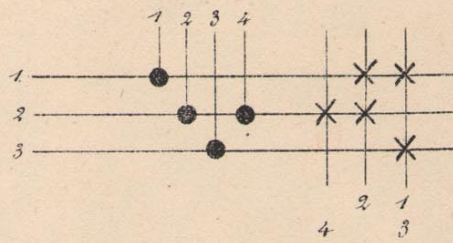


Fig. 96

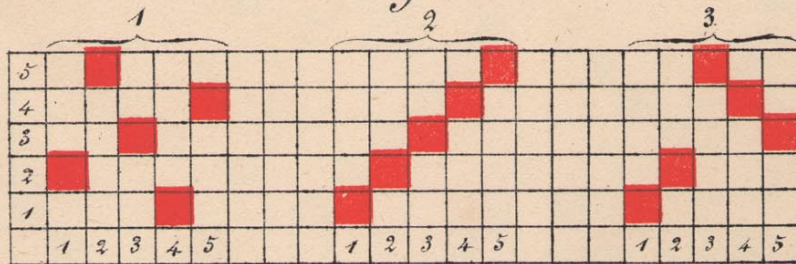


Fig. 96

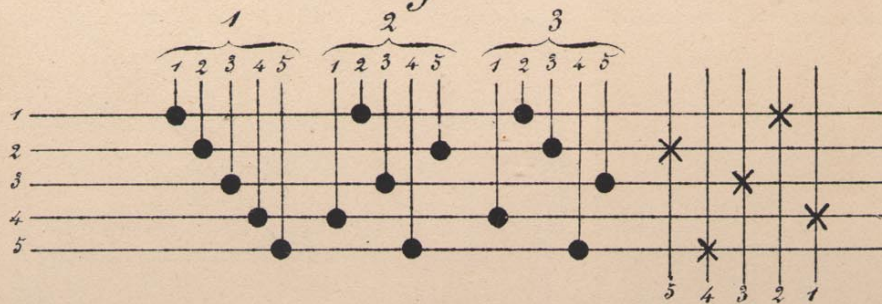


Fig. 97.

Fond.....

Coupure diagonale

Coupure Satin 5

Coupure zigzag

Fond.....

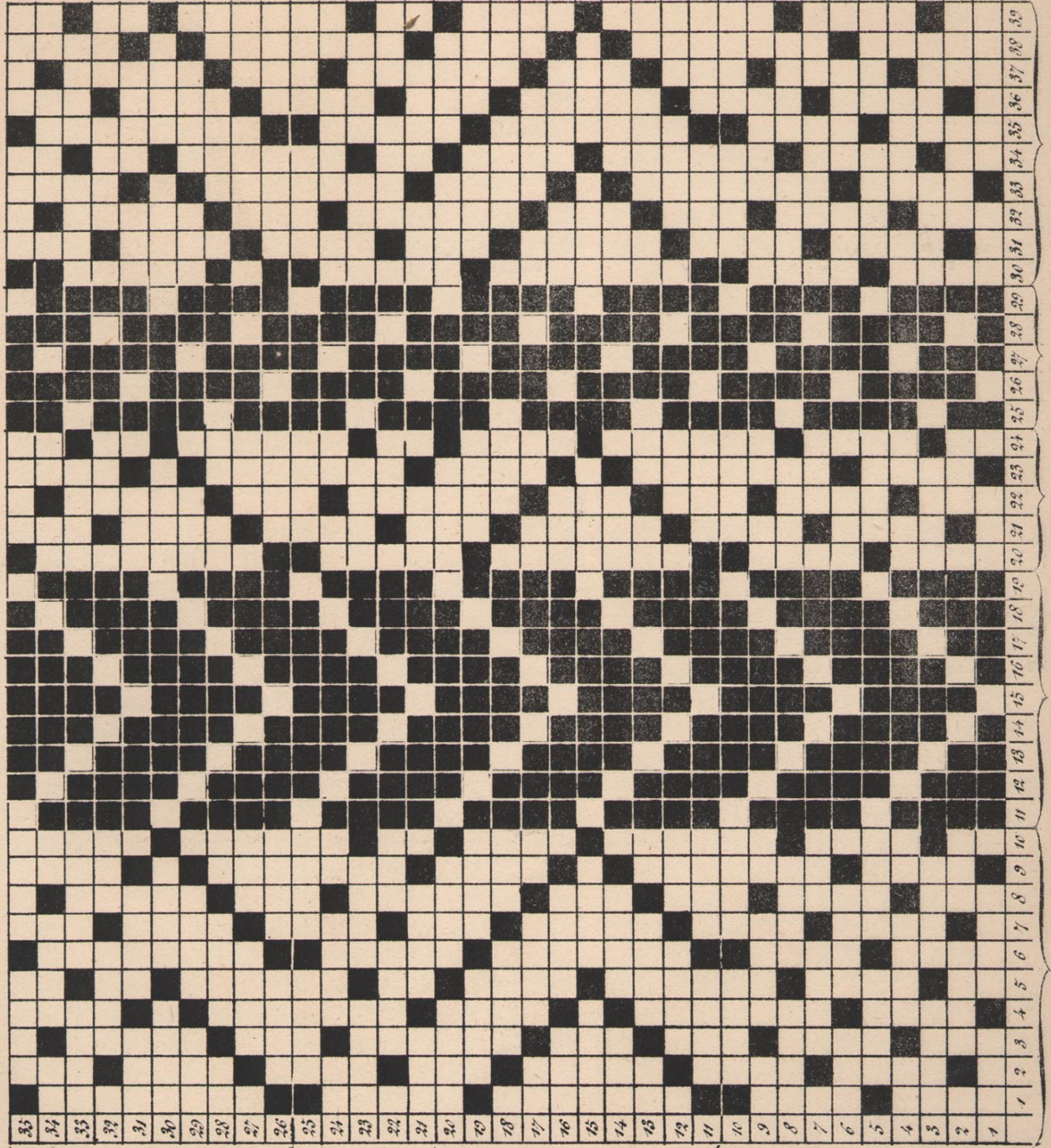


Fig. 97

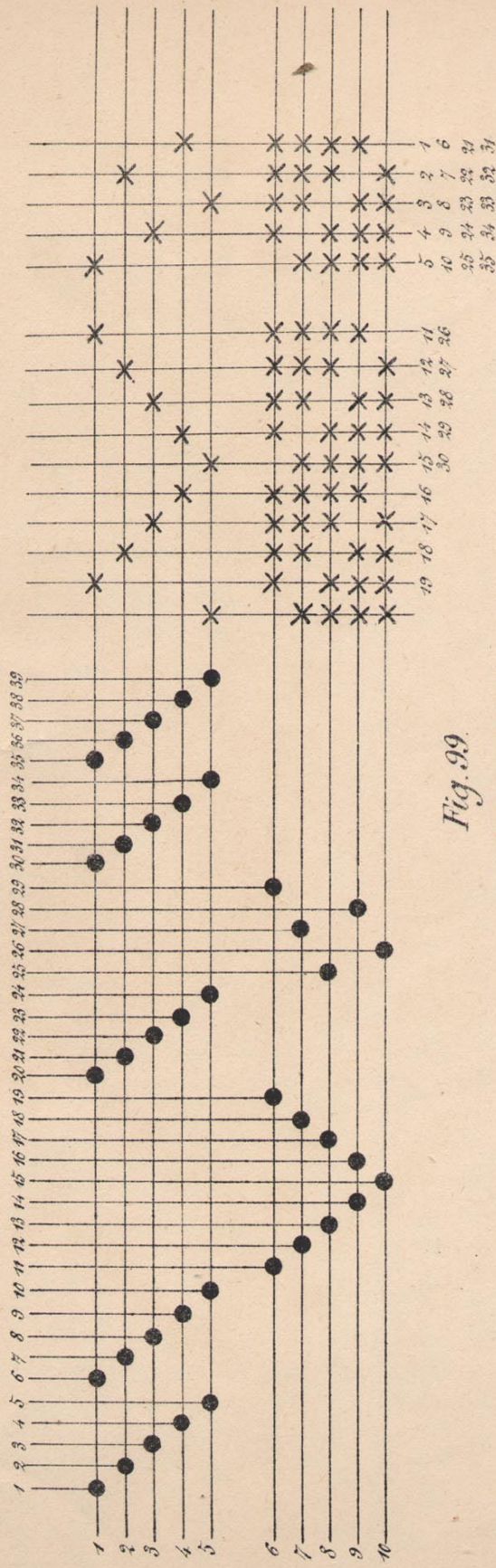


Fig. 98

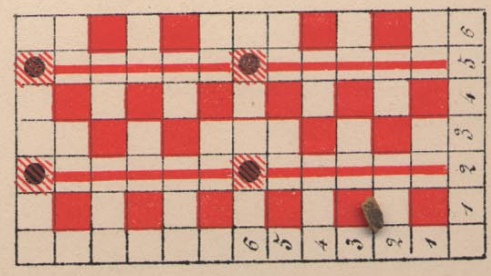


Fig. 98

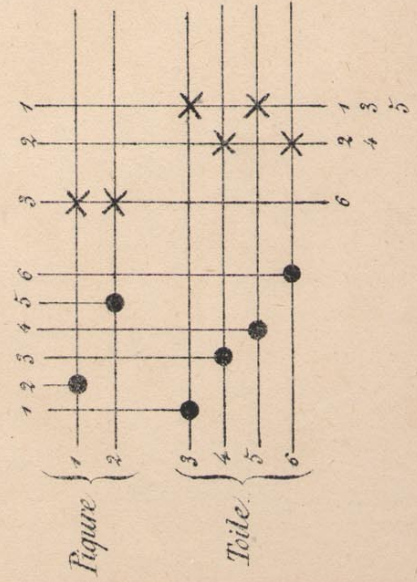


Fig. 99

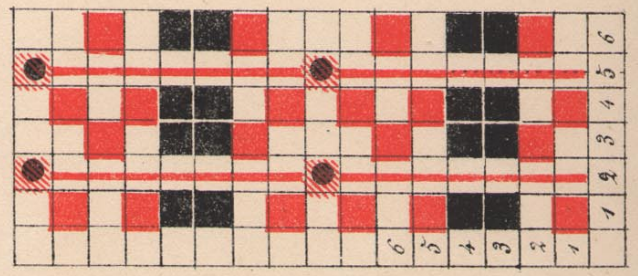


Fig. 99

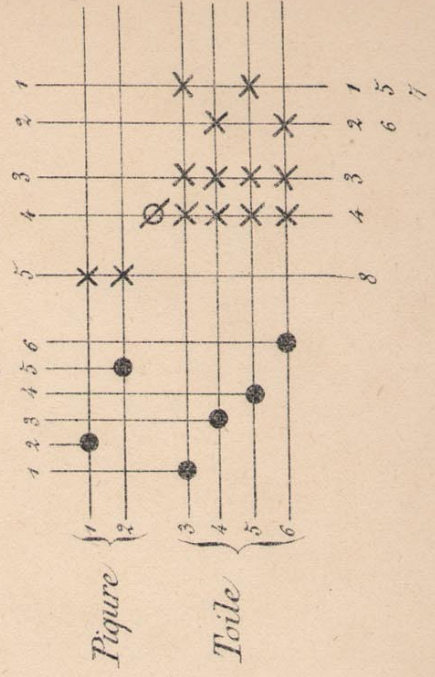


Fig. 100

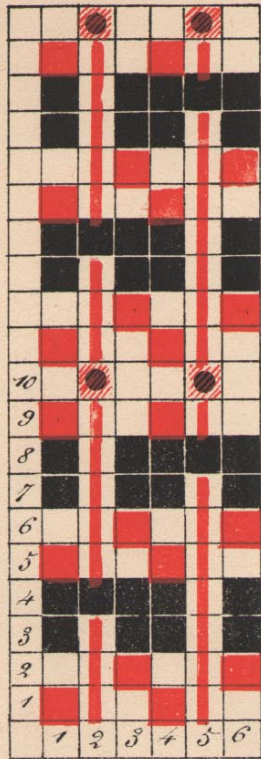


Fig. 100

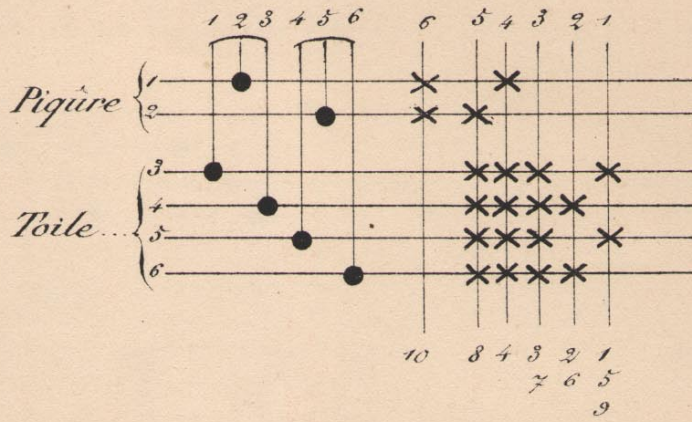


Fig. 101

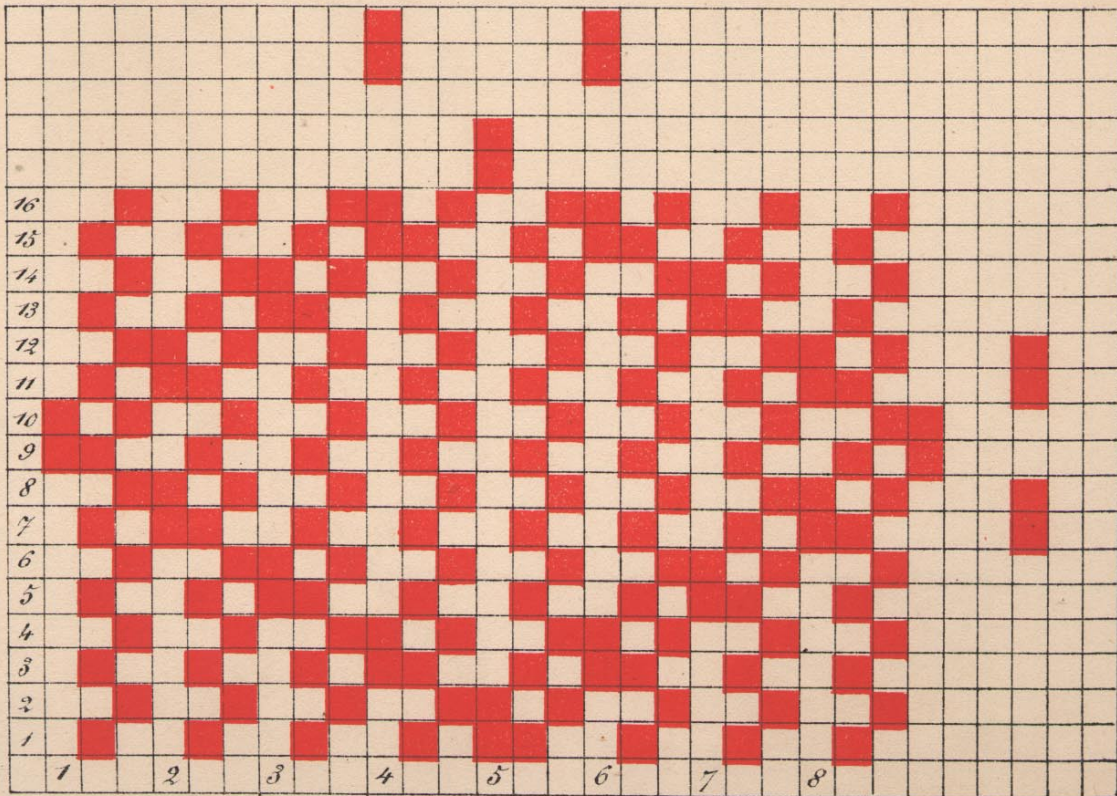


Fig. 101

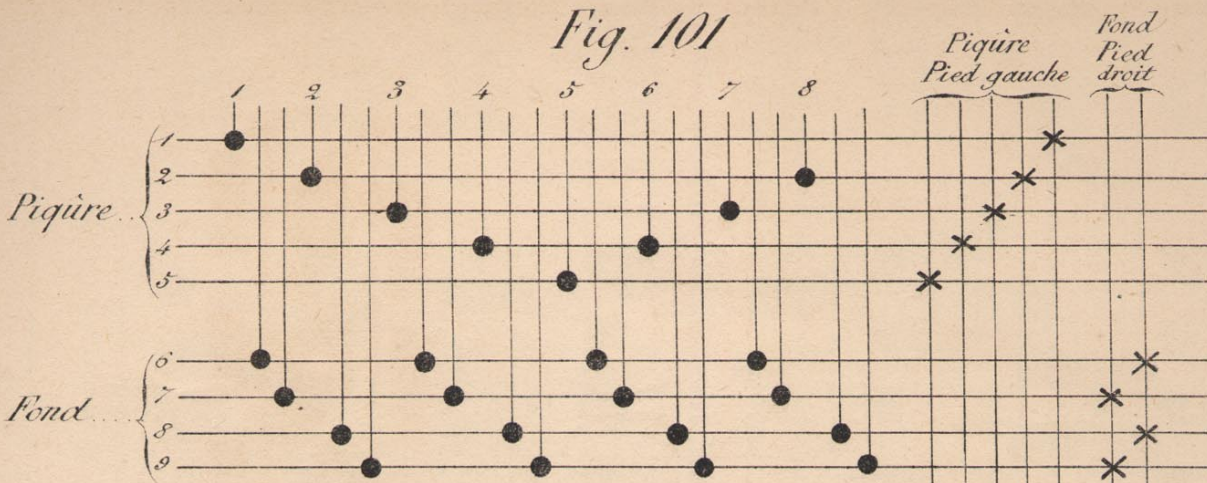


Fig. 102

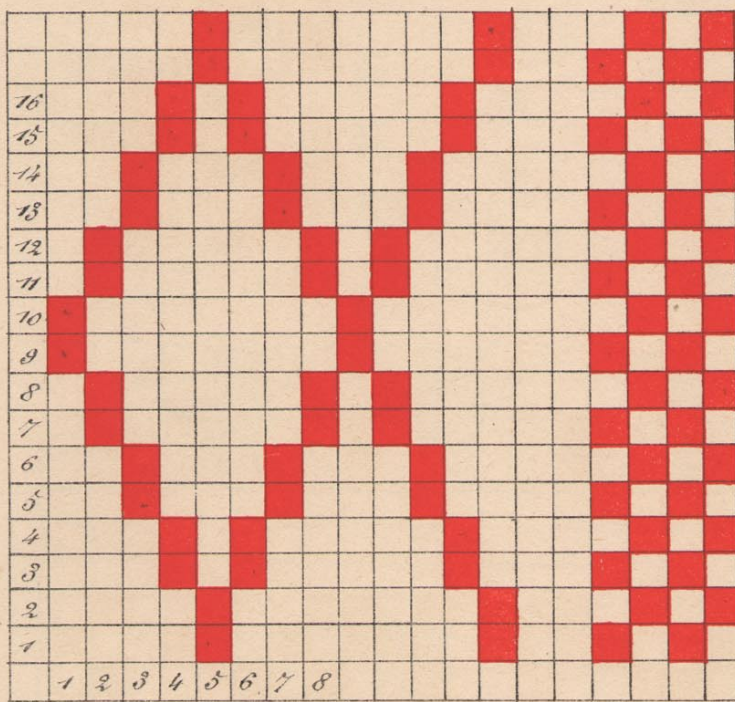
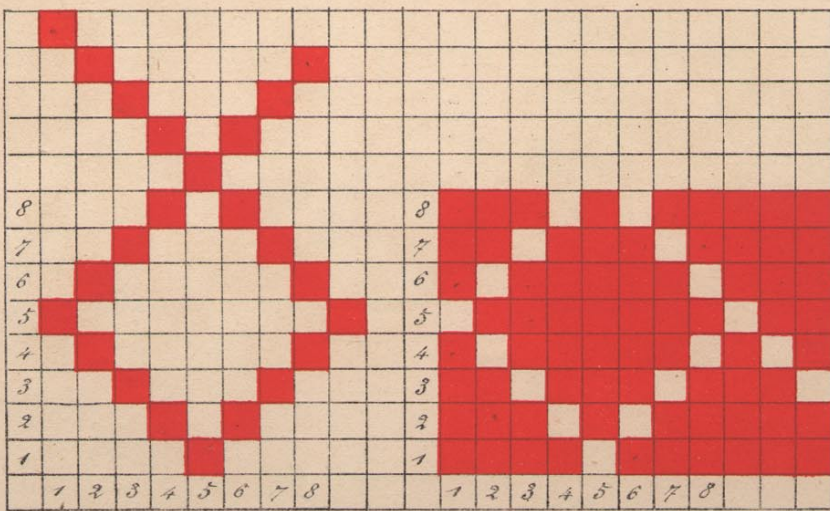


Figure Pied gauche

Fond Pied droit

1 3 5 7 9	2 1
2 4 6 8 10	4 3
15 13 11	6 5
16 14 12	8 7
	10 9
	12 11
	14 13
	16 15

Fig. 103



Jacquard