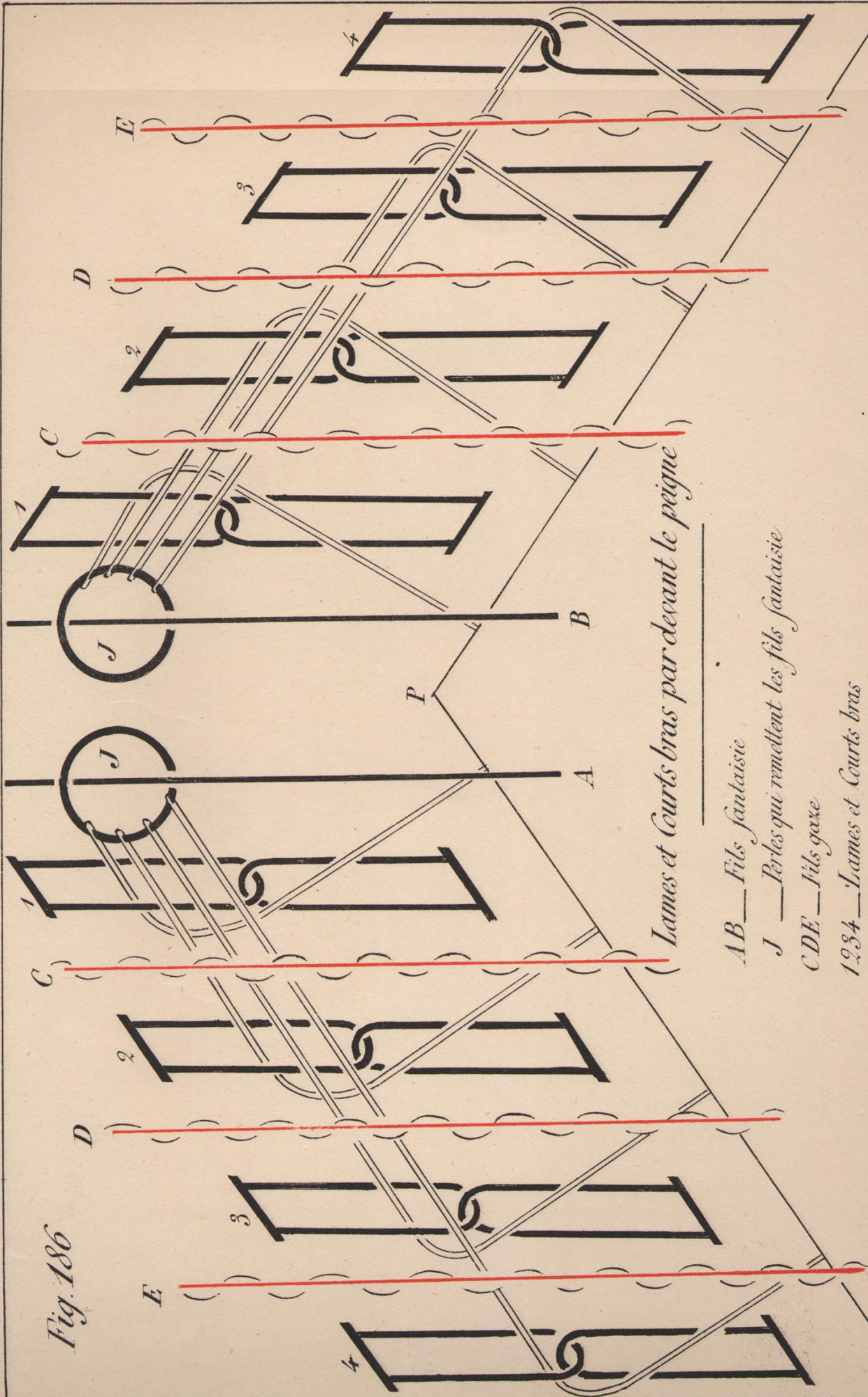


Fig. 186



Lames et Courts bras par devant le peigne

AB — Fils fantaisie

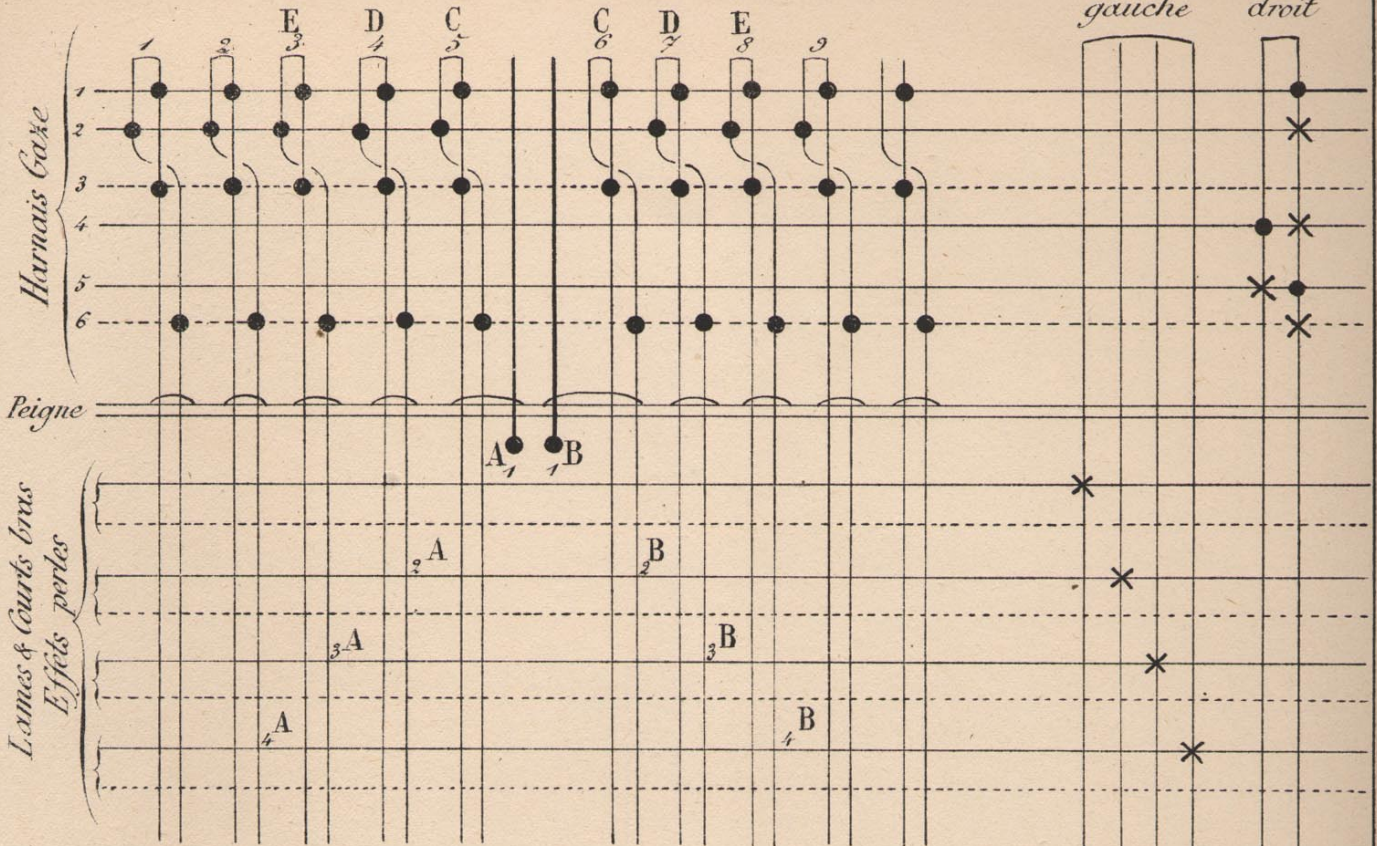
J — Perles qui remettent les fils fantaisie

CDE — Fils gaze

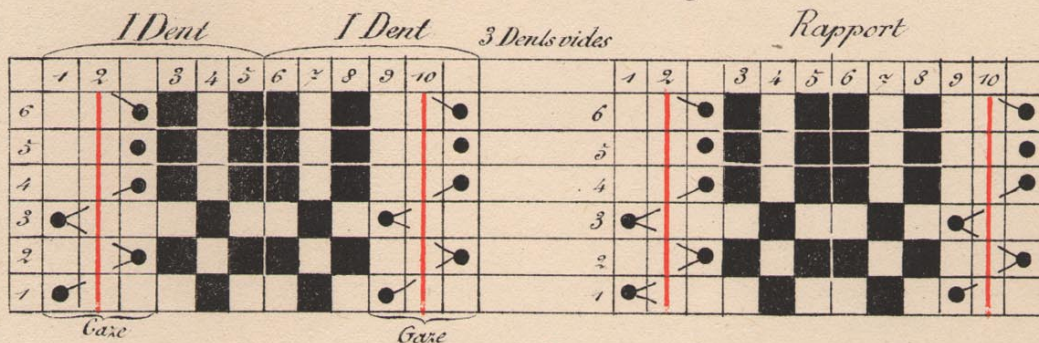
1234 — Lames et Courts bras

Fig. 187

Pied gauche Pied droit

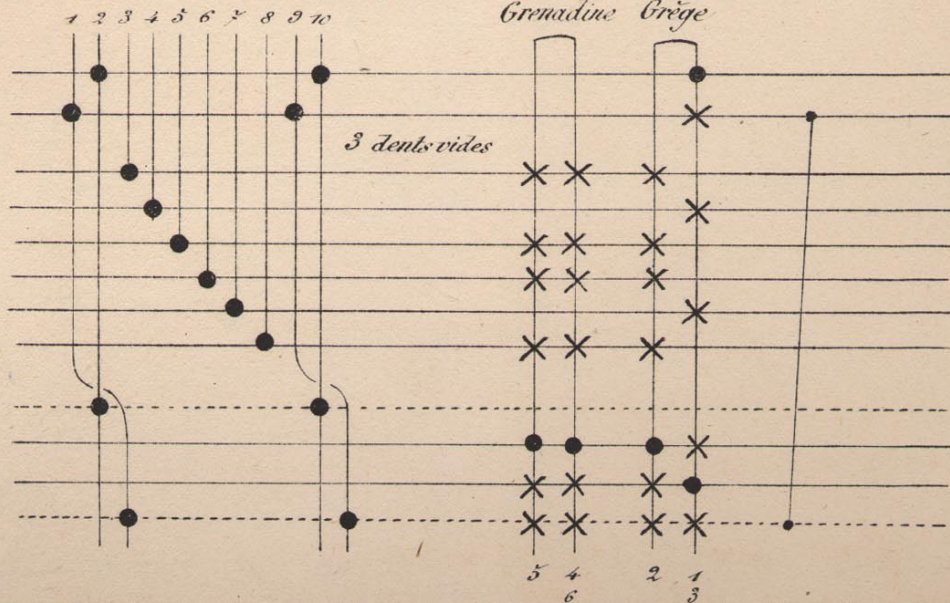


Résille (3 Montages)

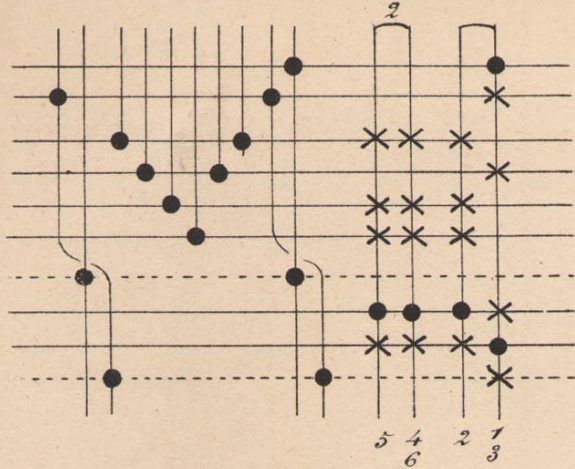


1	4	8	12	2	1
3	6	10	14	4	3
5				6	5
7				8	7
9				10	9
11				12	11
13				14	13
15	20	16		16	15
17	22	18		18	17
19				20	19
21				22	21
23				24	23

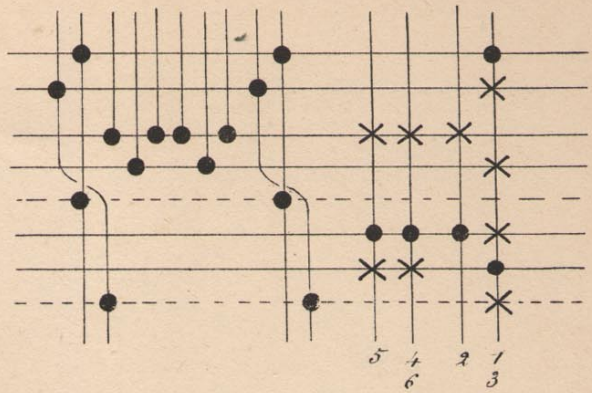
Résille Montage 1



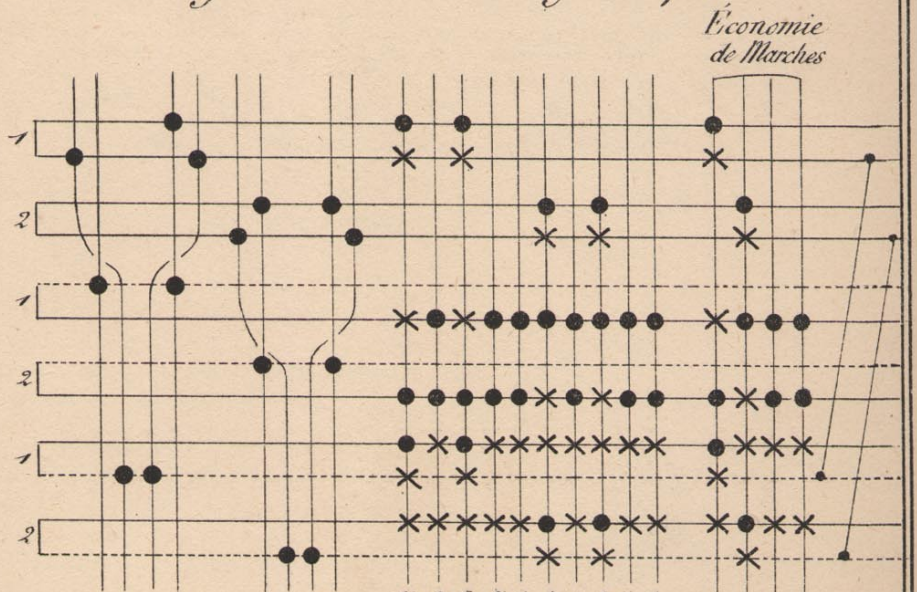
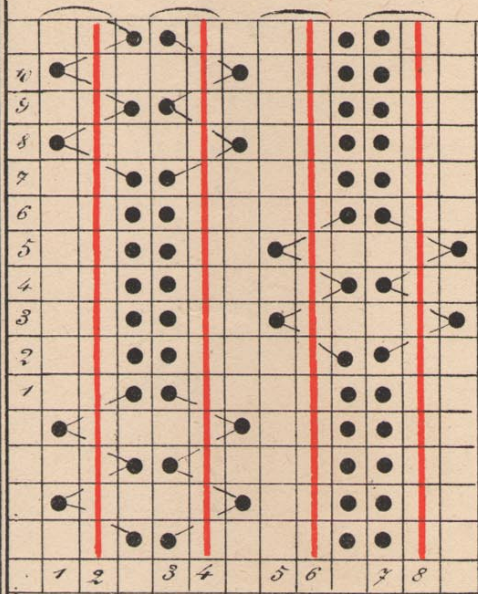
Résille Montage 2



Résille Montage 3

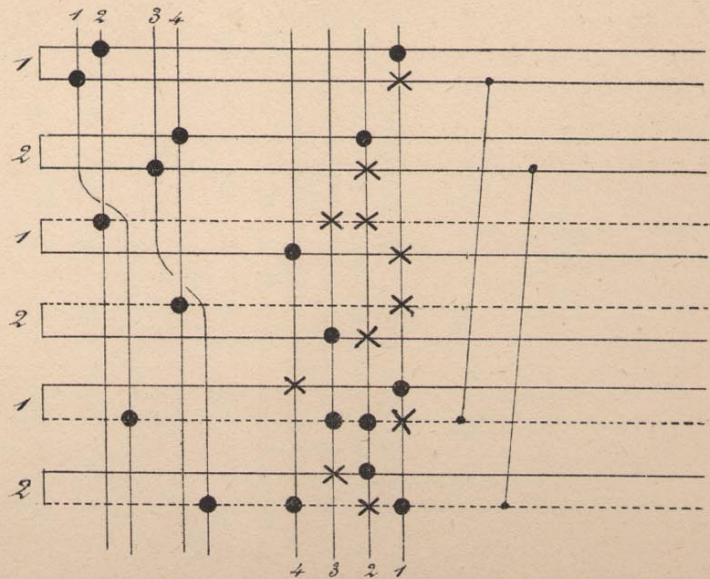
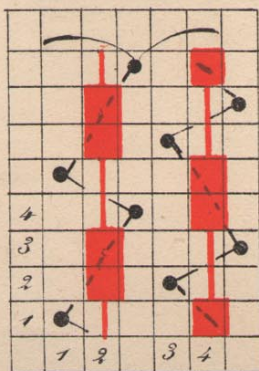


Gaze Chambéry Guipure Montage Gaze Chambéry Guipure



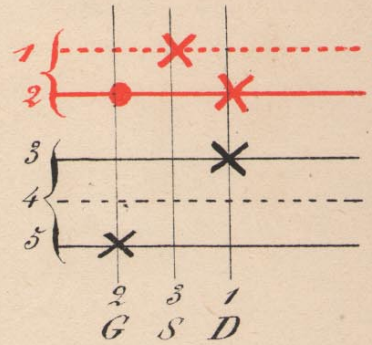
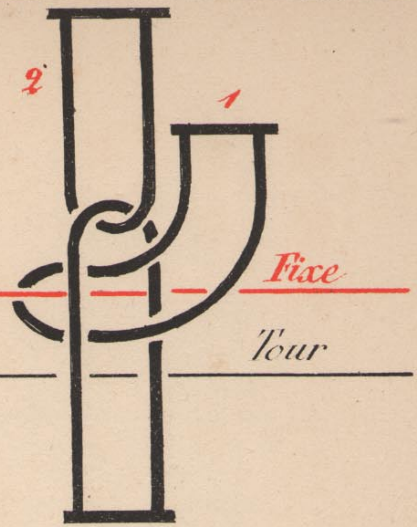
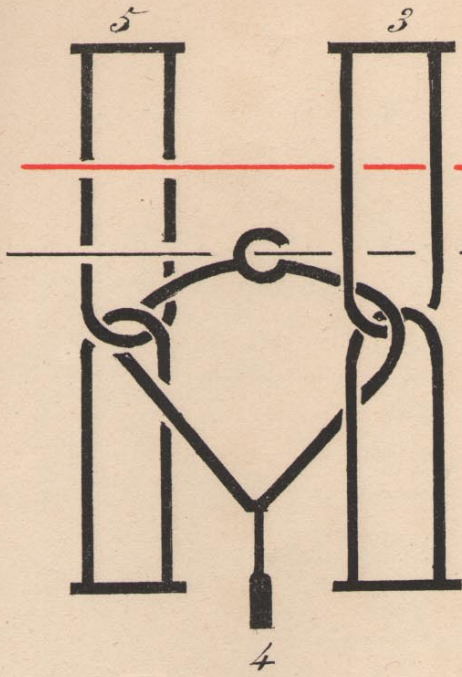
Montage Gaze Imitation Tricot avec grosses Matières Chaîne & Trame

Gaze Imitation Tricot



Gaze sans pas dur

Fig. 188



Gaze sans pas dur

Fig. 189.

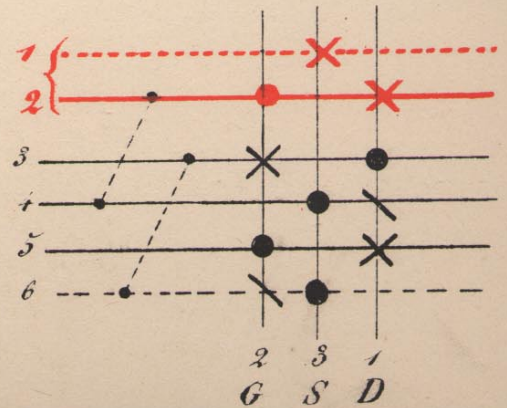
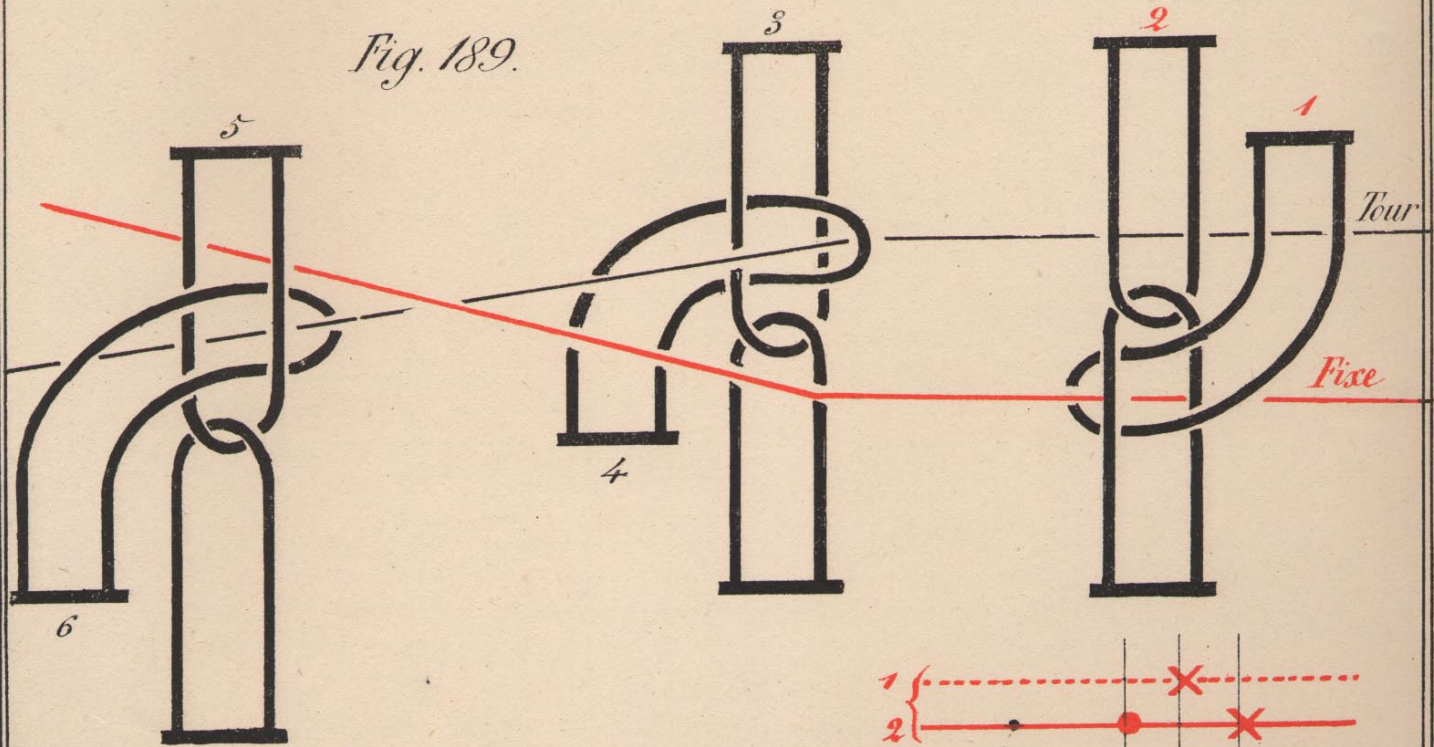
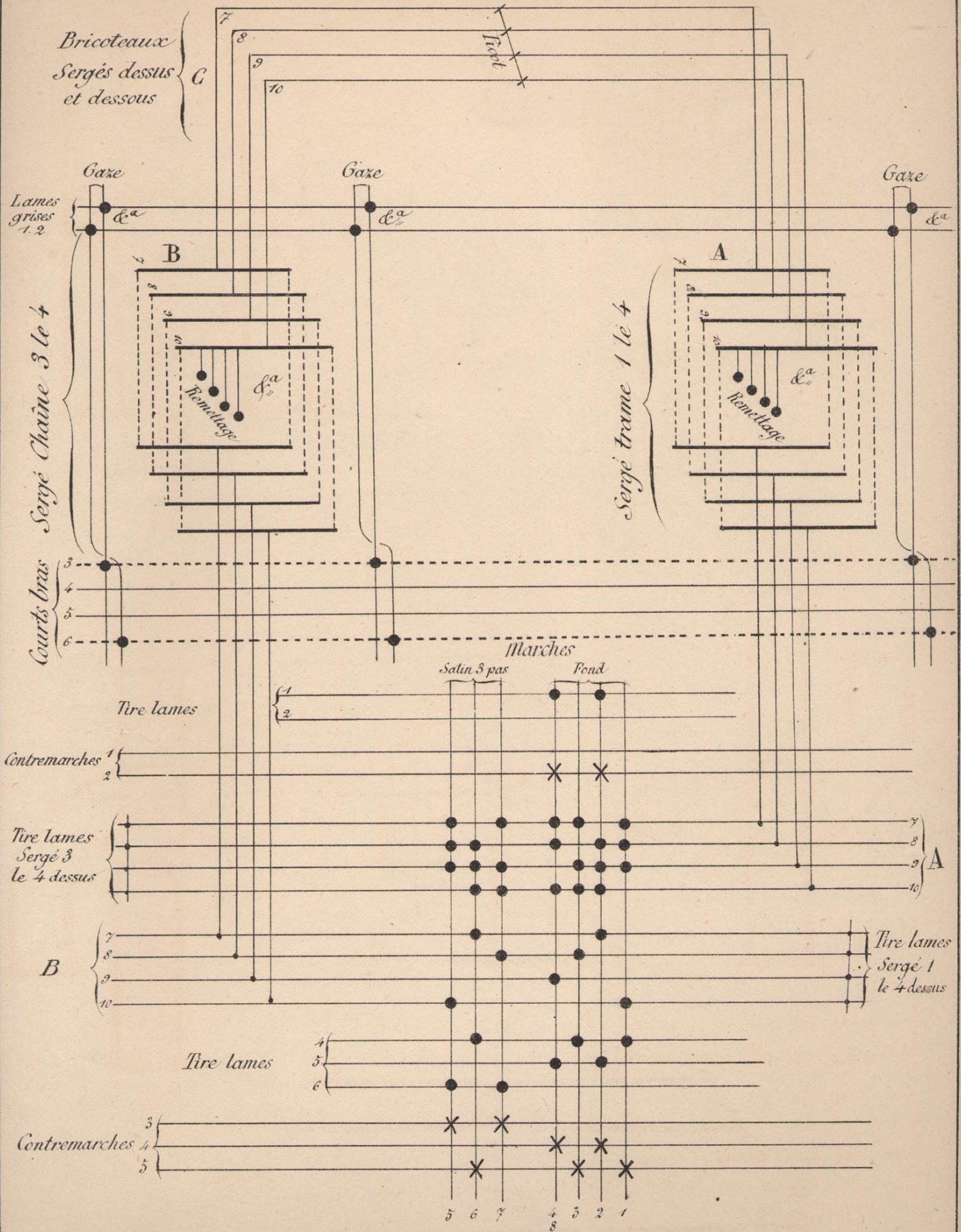


Fig. 190.

Effet Sergé réversible sur fond Gaze
 Quadrillé Satin 3 pas.



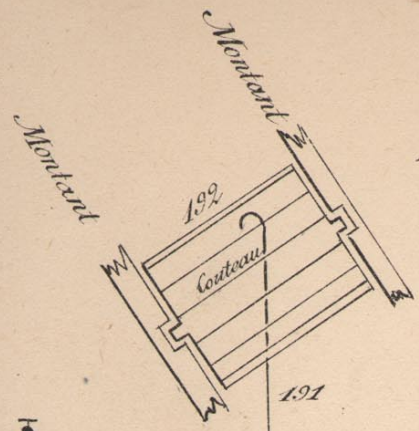
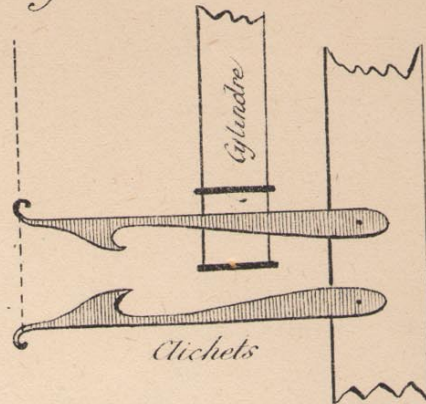


Fig. 193



Planchettes
Aiguille

Aiguilles

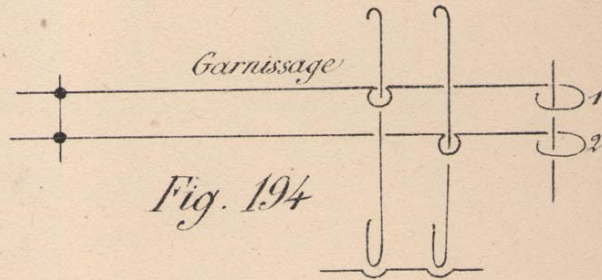
Elastique

Planchette
Collets

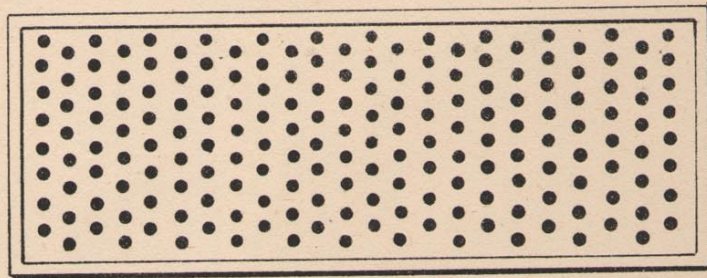
Collet

Mousqueton

Boucle d'Arcades
1^{er} Trou



Planchette Arcades



dermier Trou

Mécanique
Cylindre à droite

Fig. 196



Tisseur x

Mécanique
Cylindre à gauche

Fig. 195



x Tisseur

Fig 197

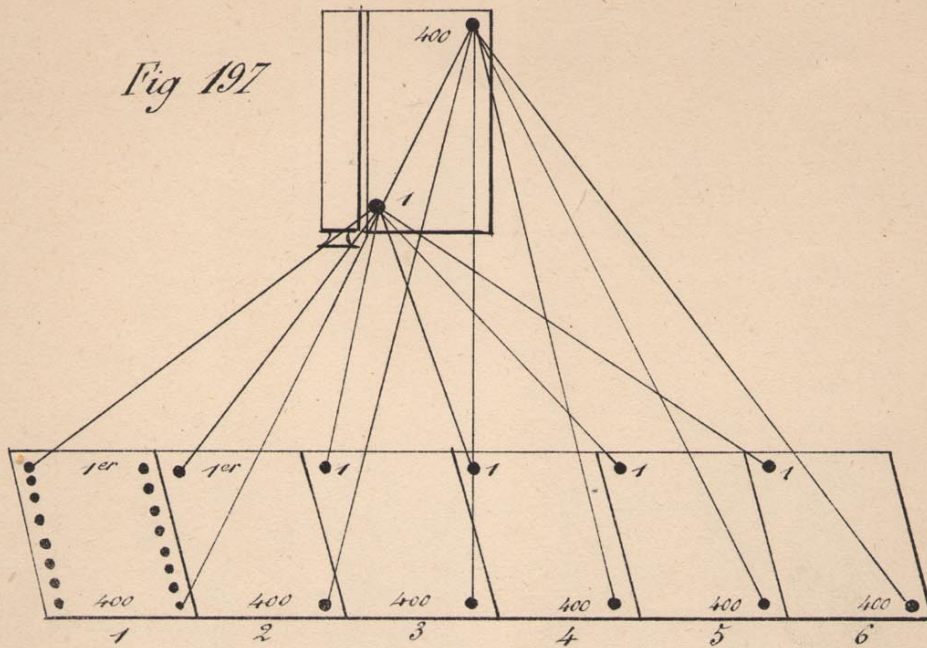


Fig. 198

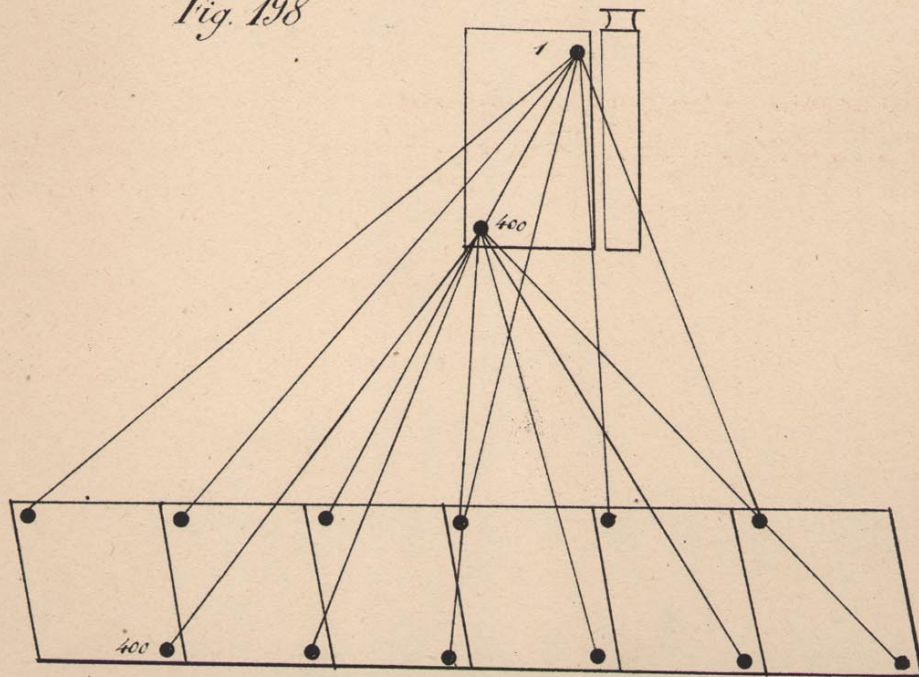


Fig. 199.

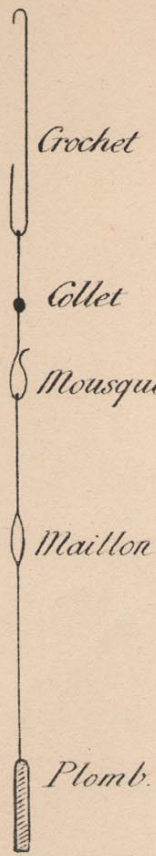


Fig. 200

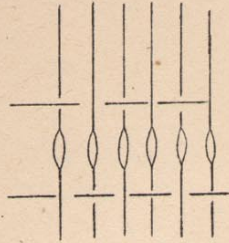


Fig. 201

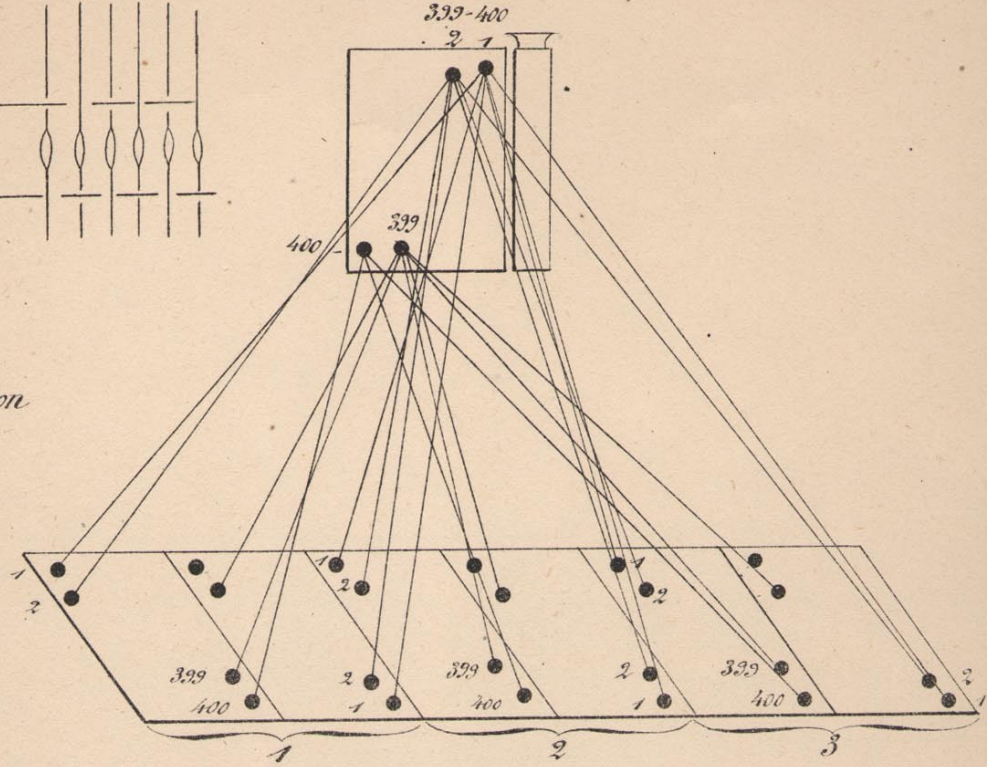
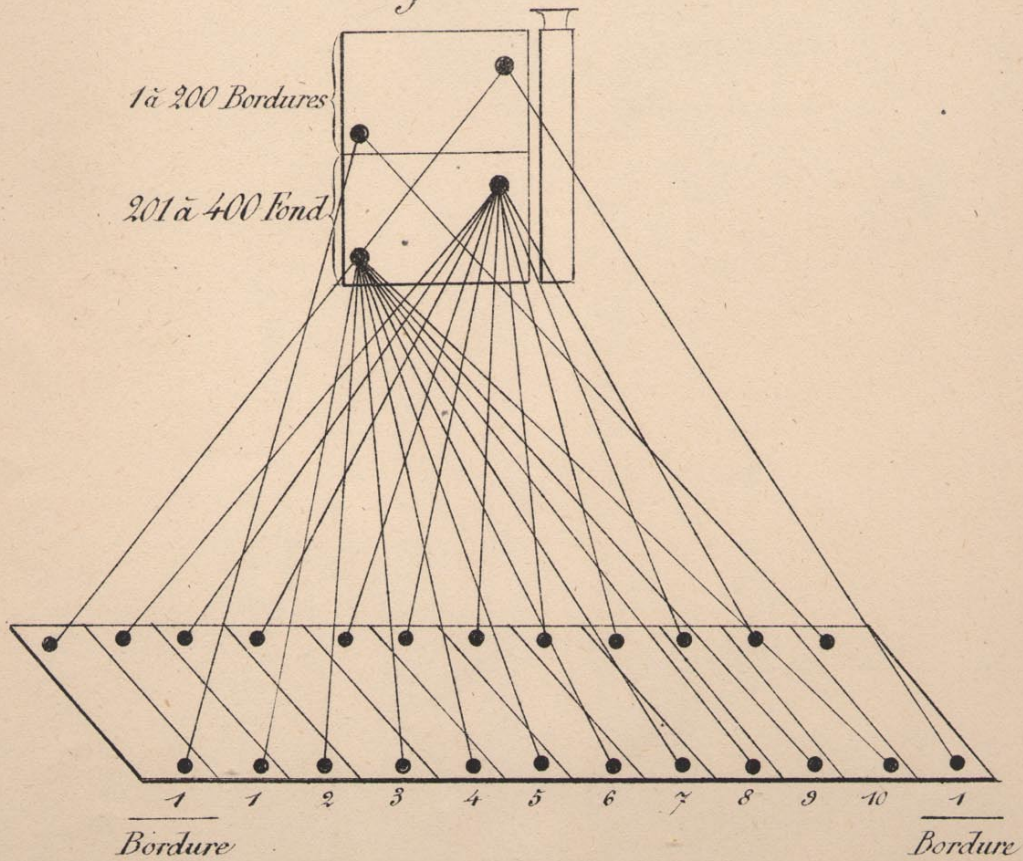


Fig. 202



160 Grochets Bordures
 20 d^e Batard
 200 d^e Fond
 20 d^e Batard

Fig. 203

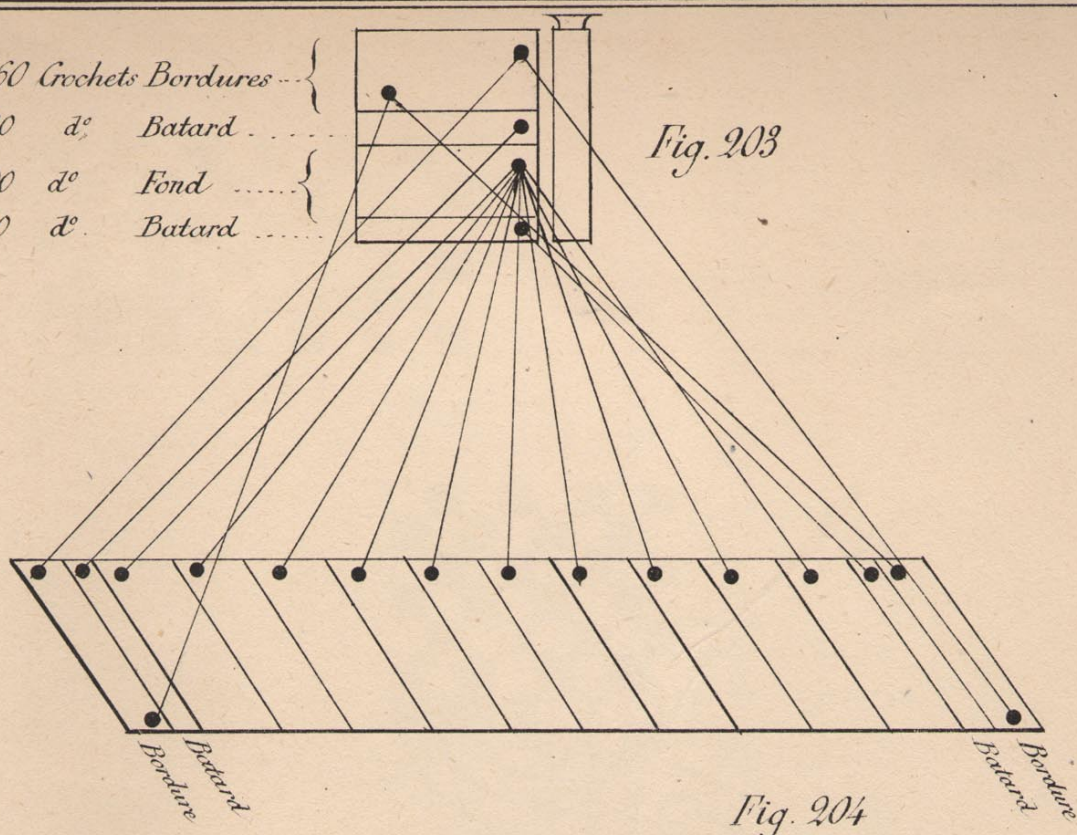


Fig. 204

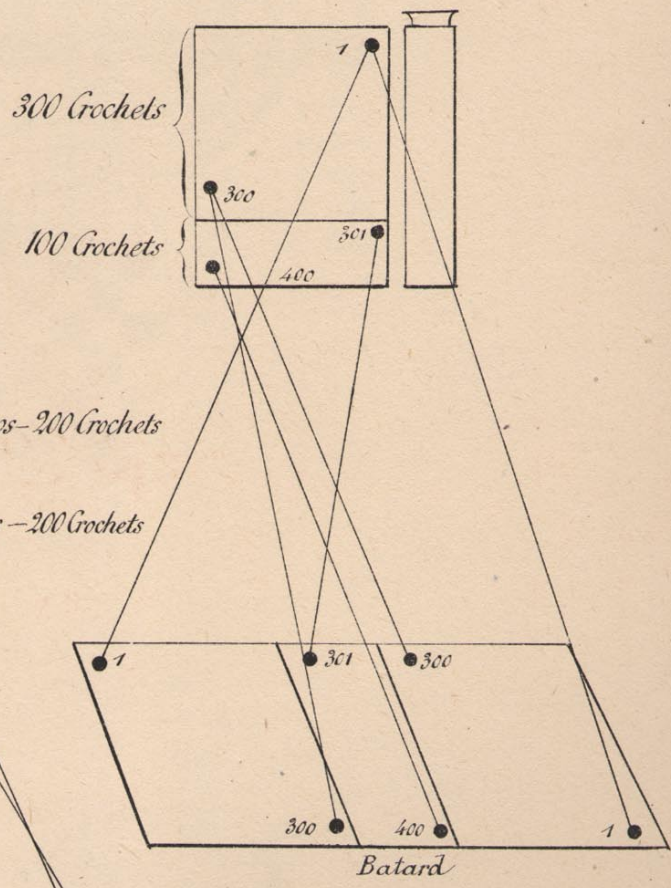


Fig. 205

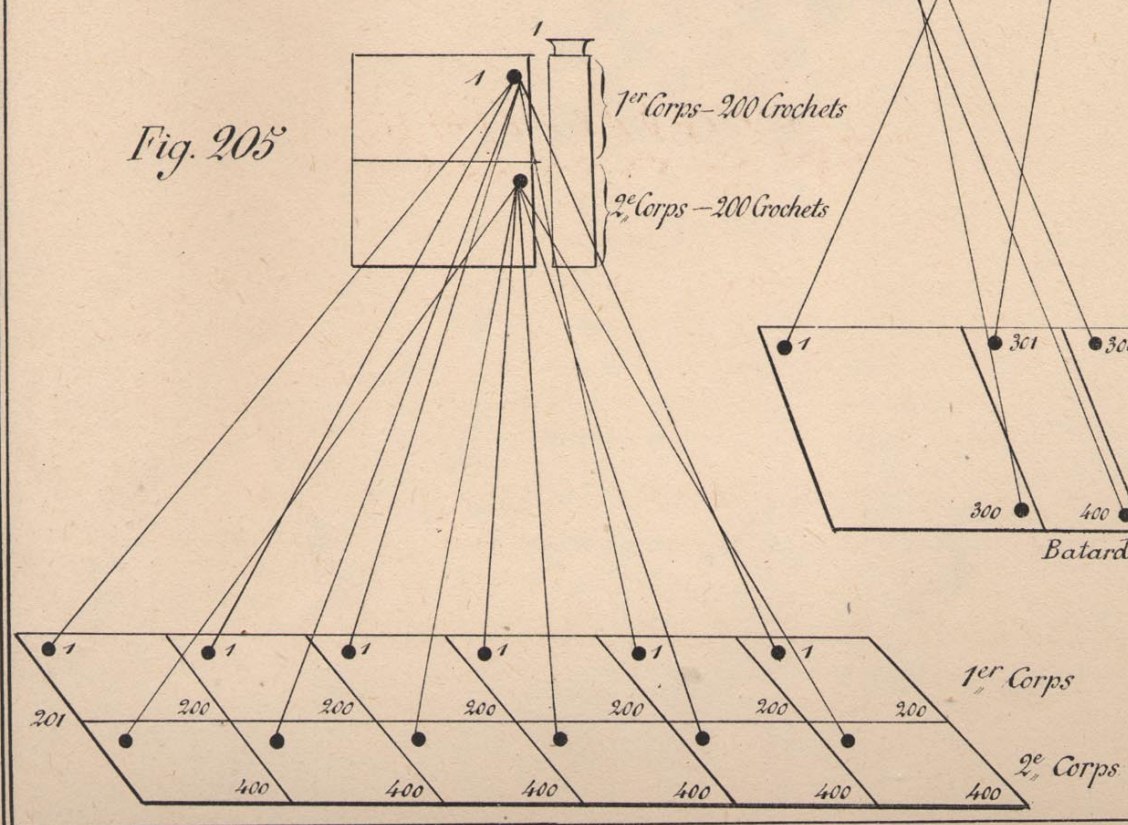


Fig. 206

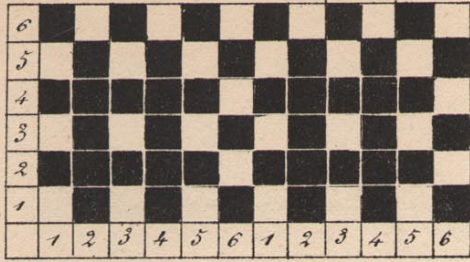


Fig. 206

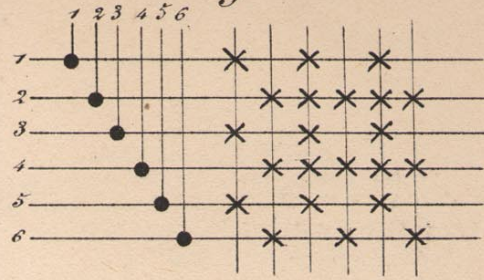


Fig. 207

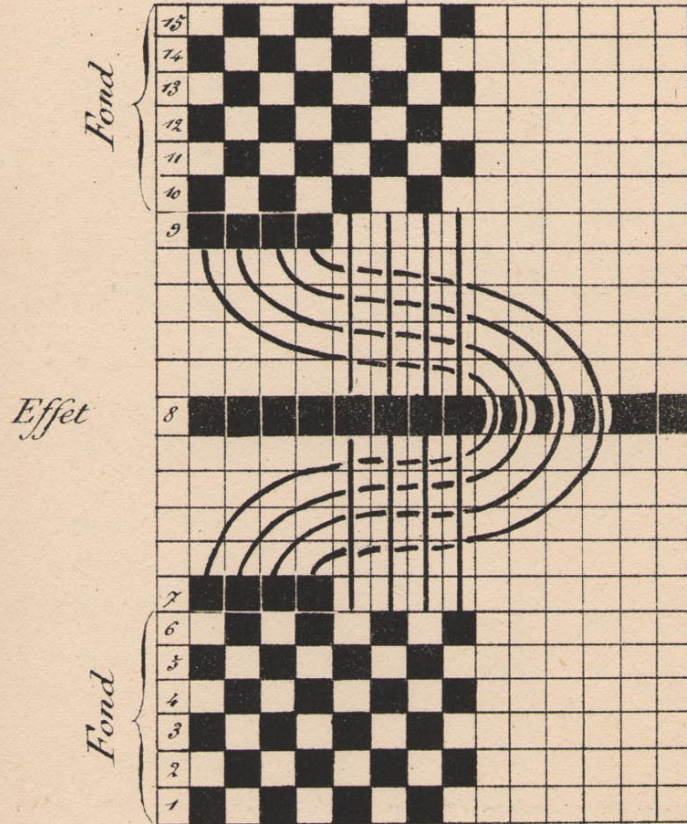


Fig. 207

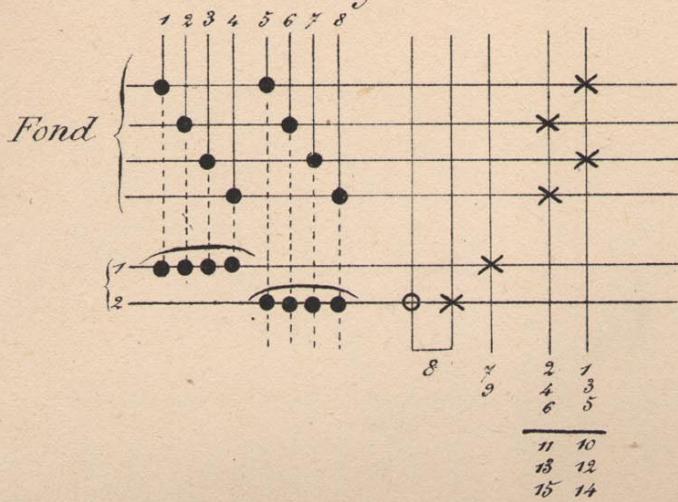


Fig. 208

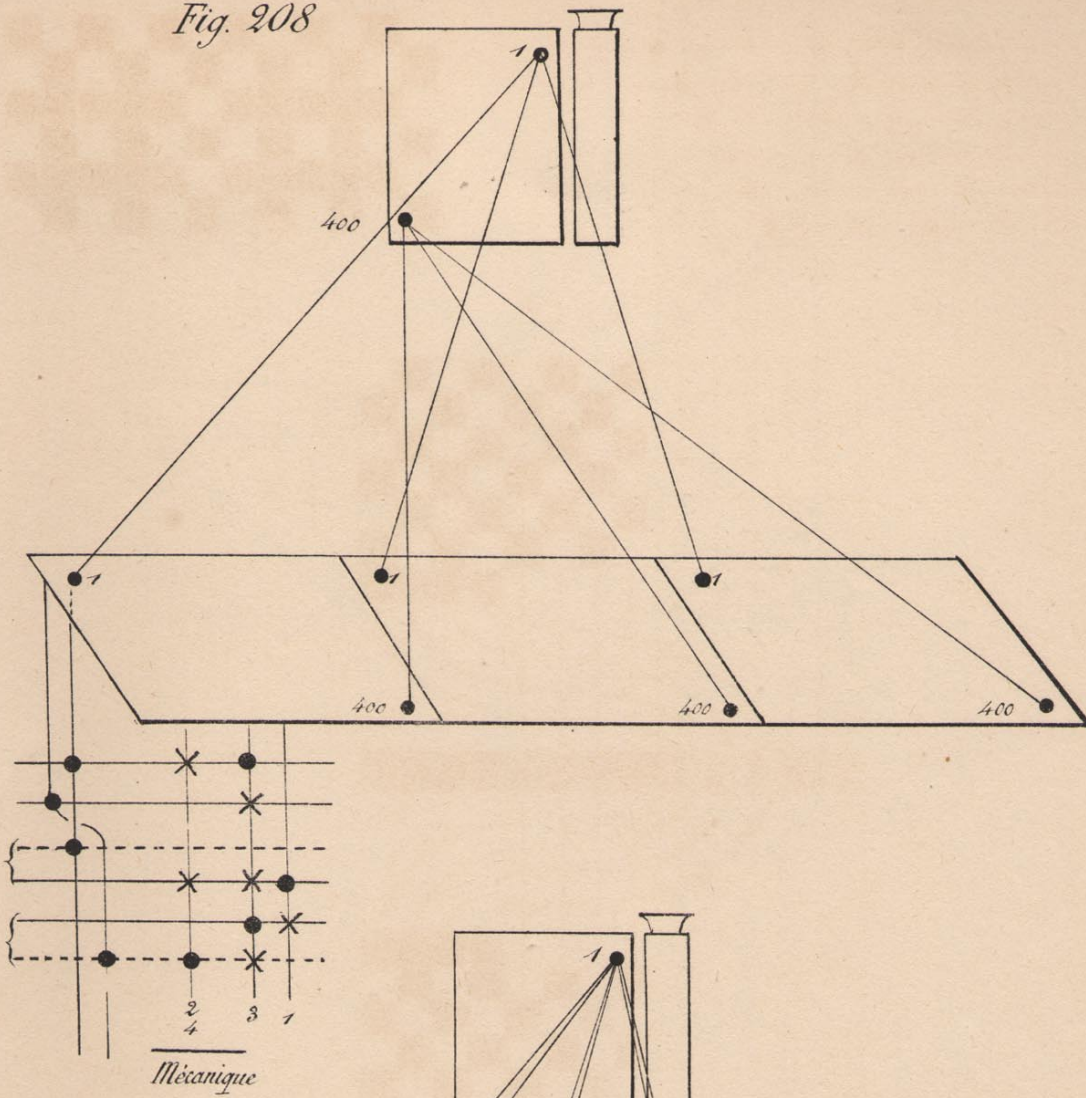


Fig. 209

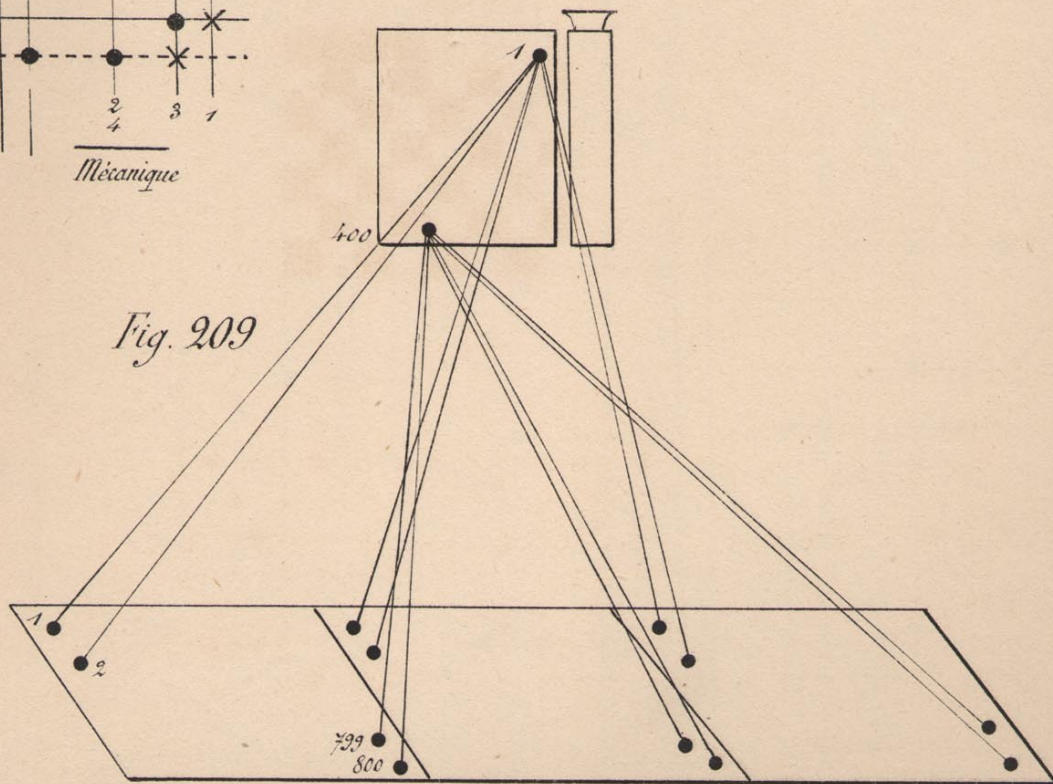
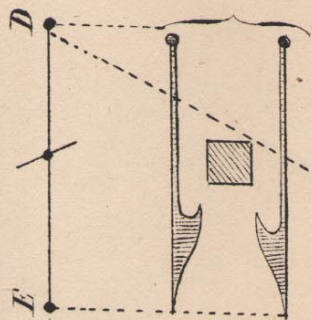
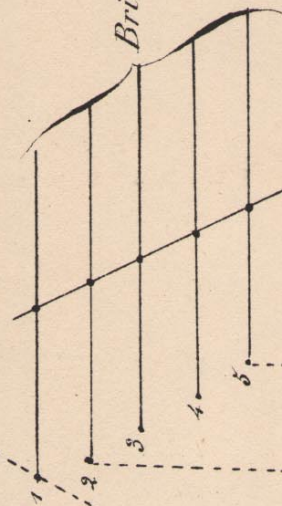


Fig. 209⁽²⁾

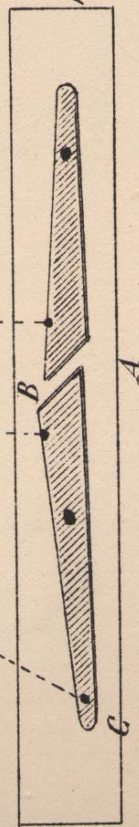
Bascule de Rappel



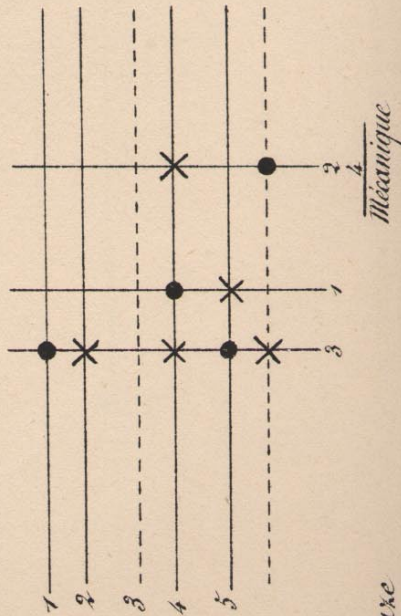
Clichets et Cylindre



Bricoteaux



Mouvement



1. Pas dur
3 Pas de Gaxe

Fig. 210

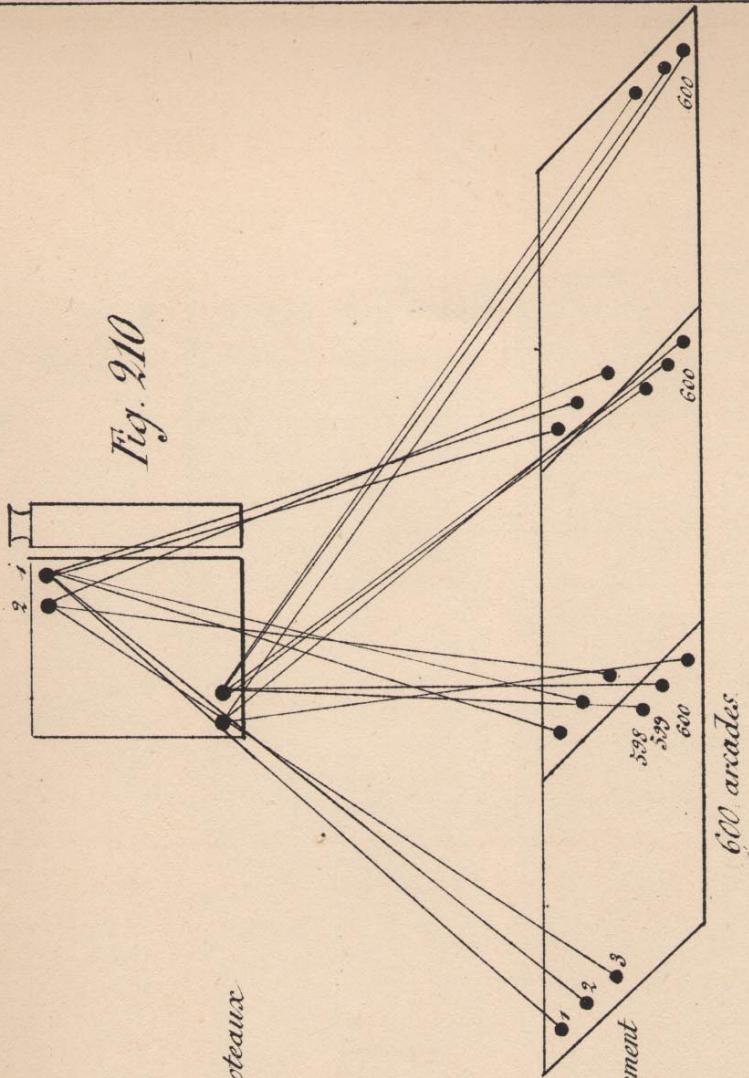


Fig. 211

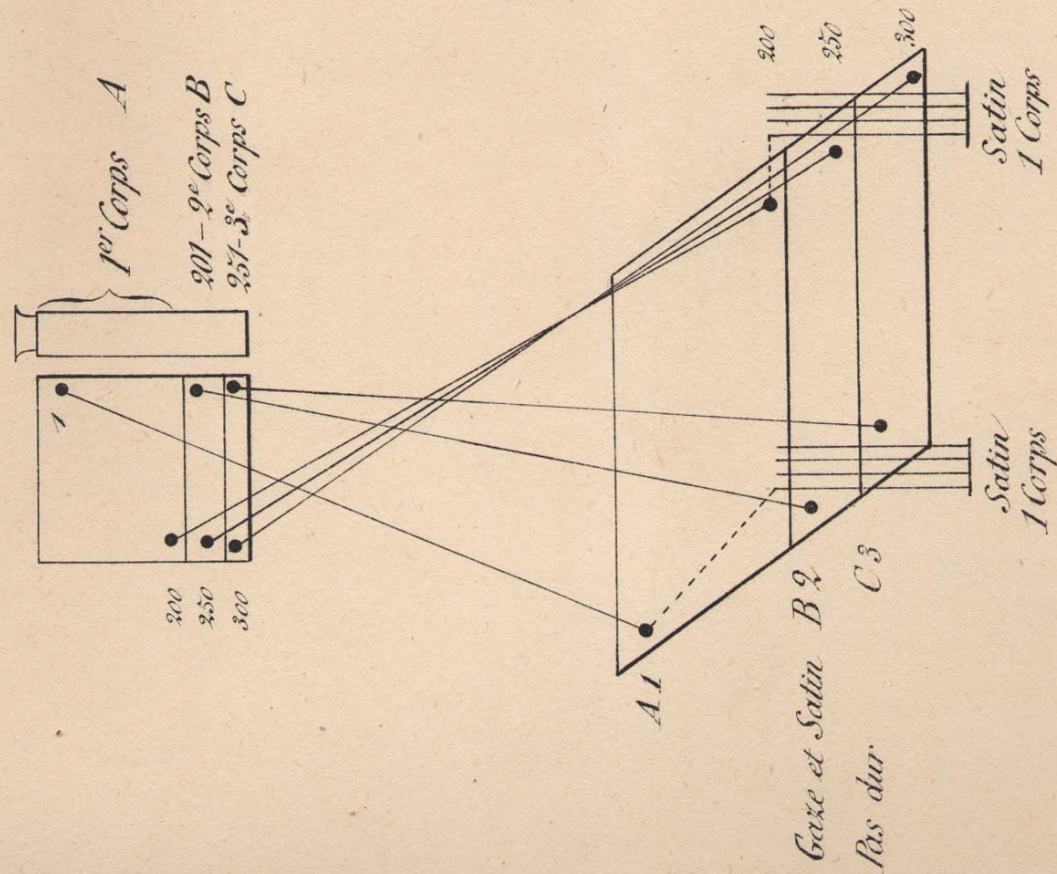


Fig. 211 (2)

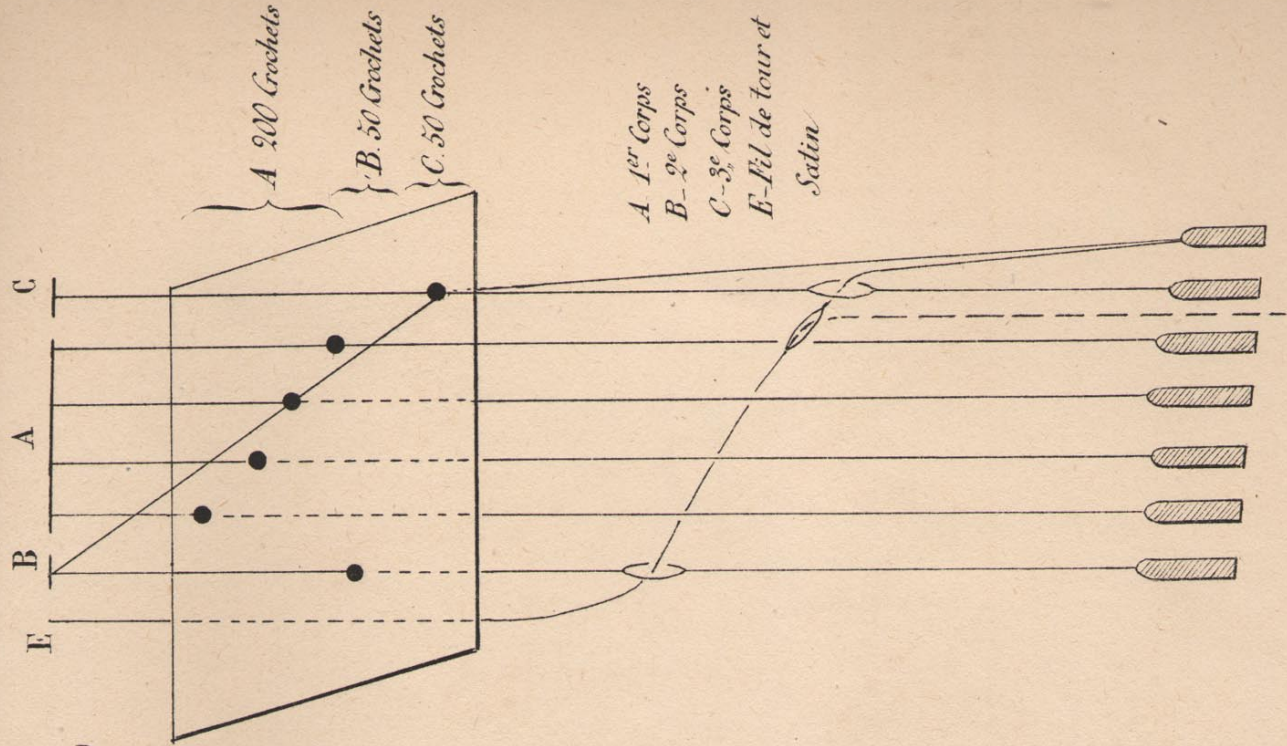


Fig. 212

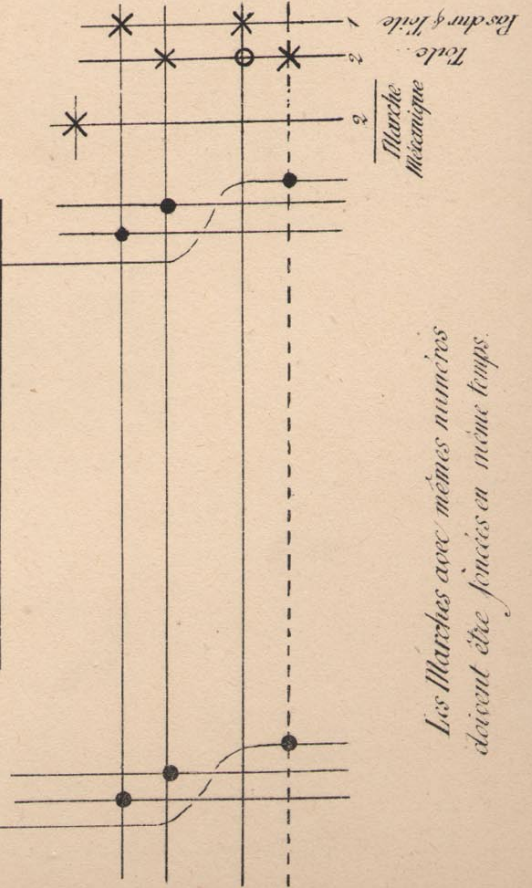
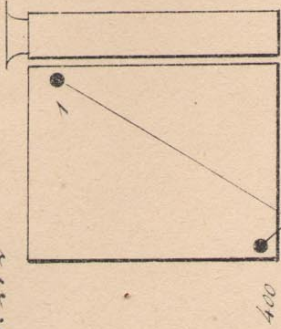
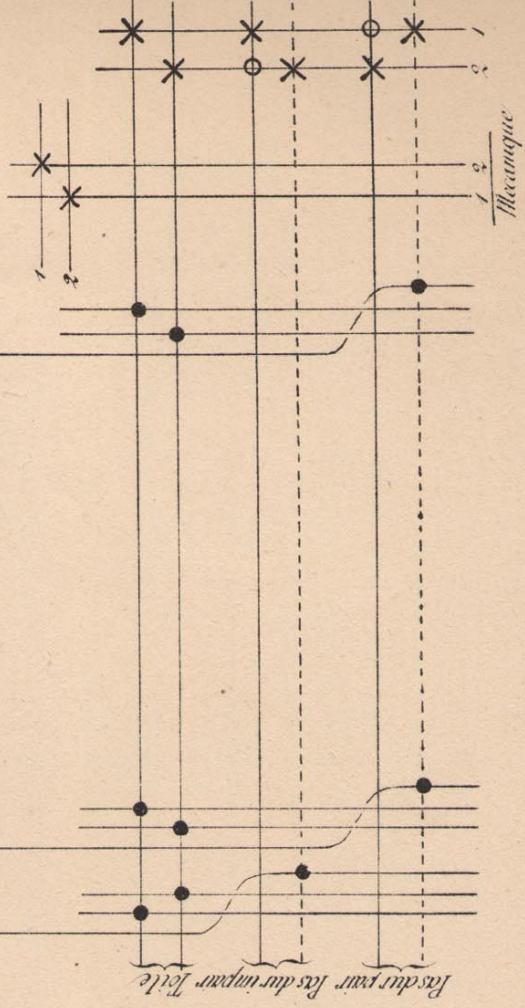
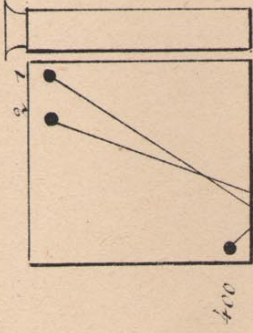


Fig. 213



Les Marches avec mêmes numéros
doivent être jouées en même temps.

Fig. 214

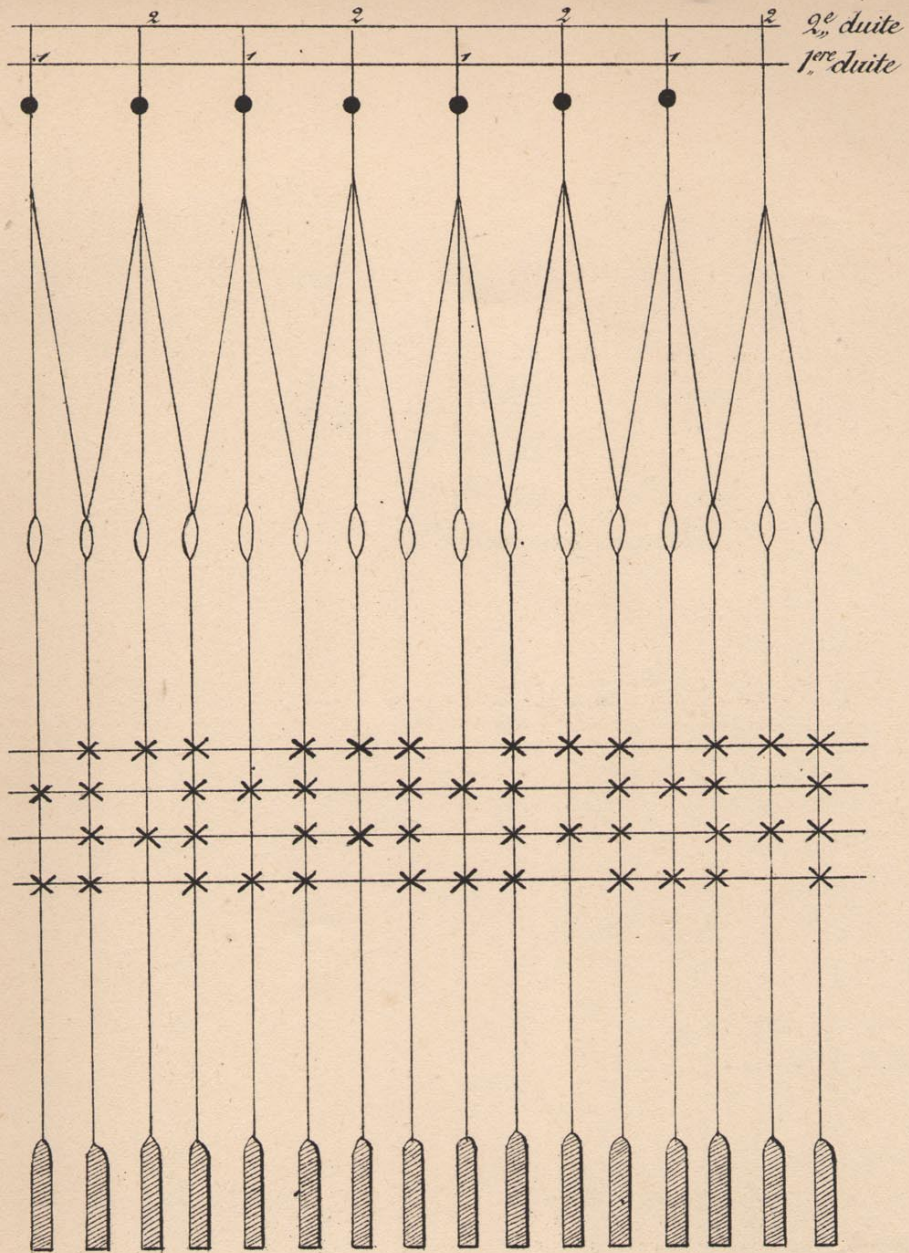


Fig. 214

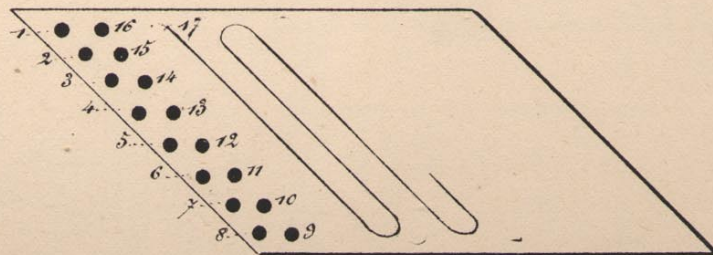
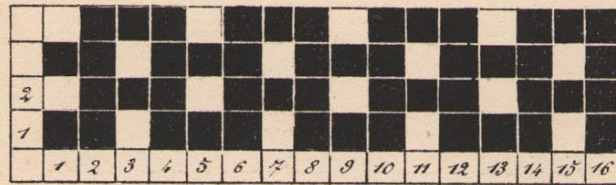


Fig. 215

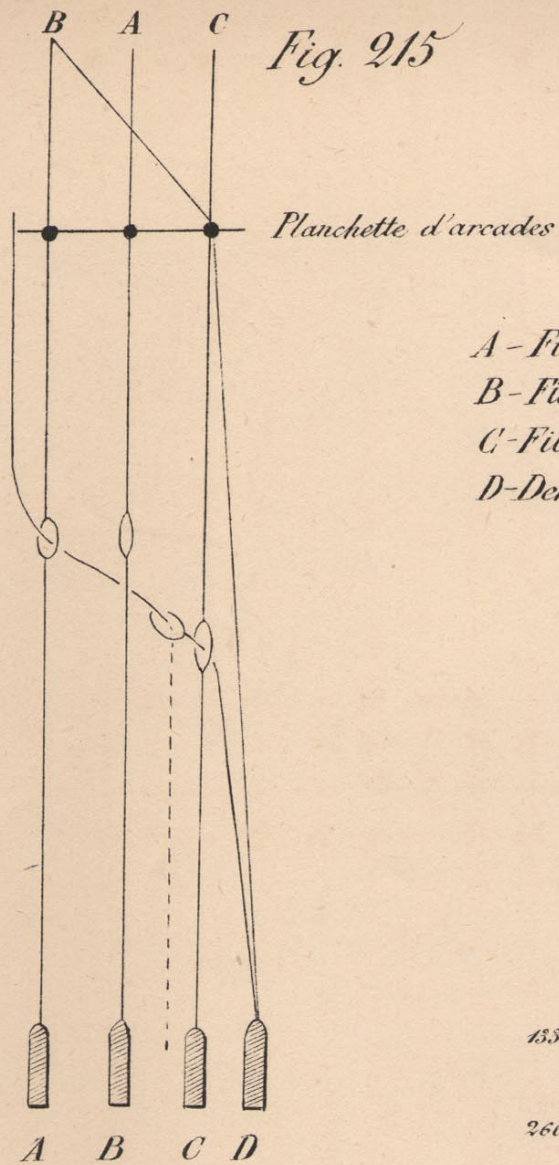


Fig. 216

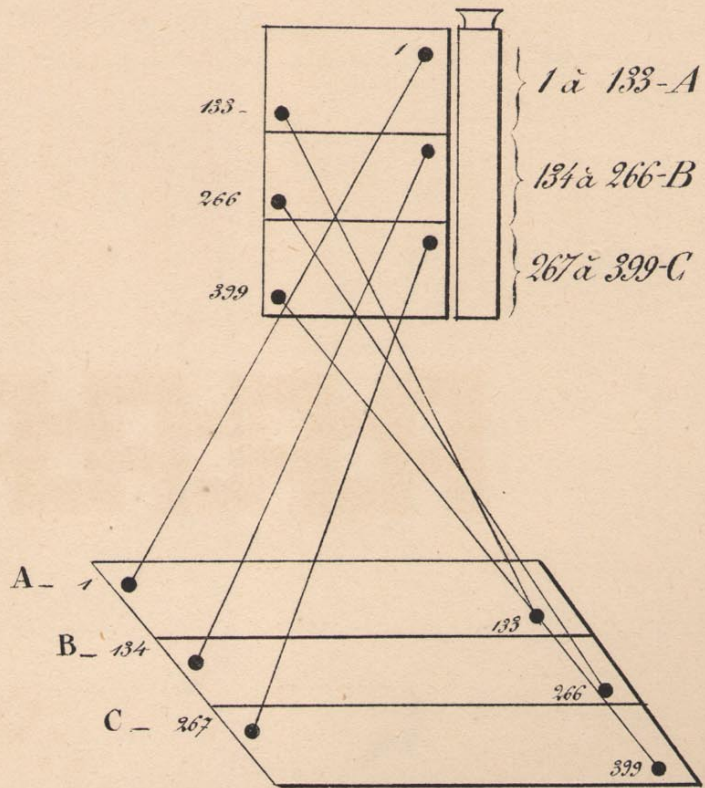


Fig. 217

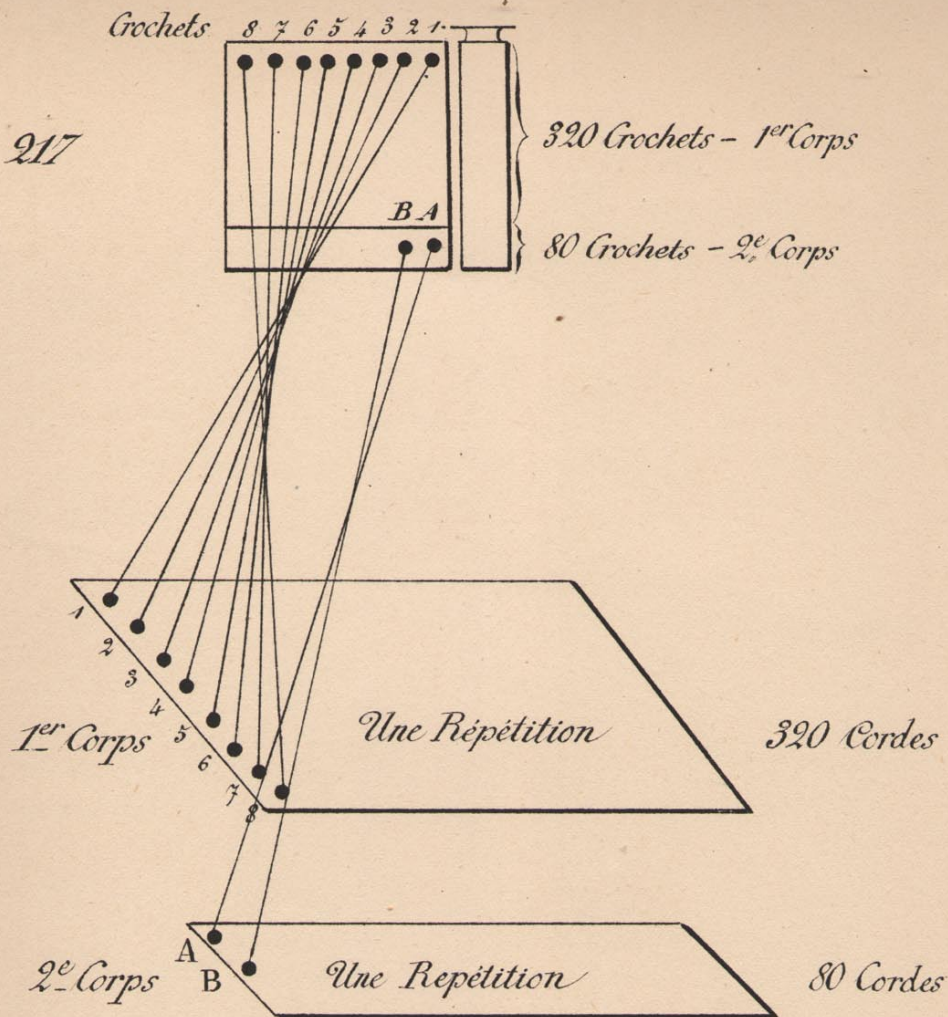


Fig. 218

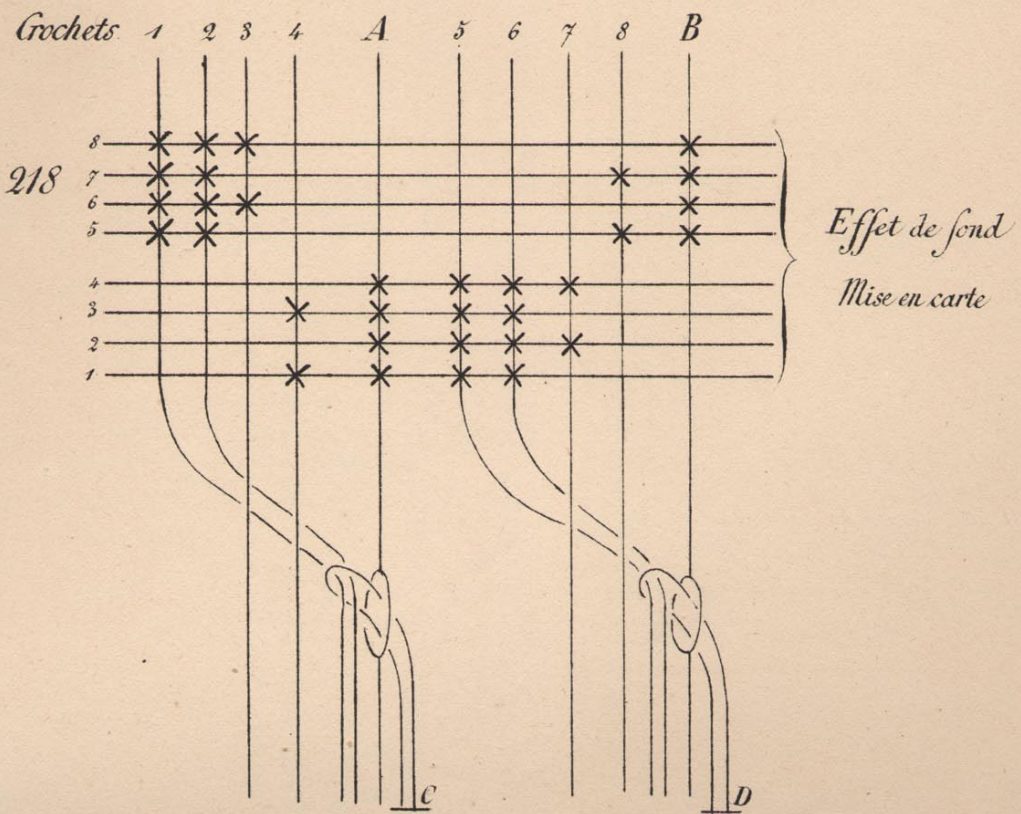
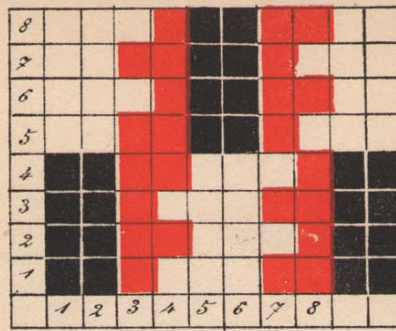
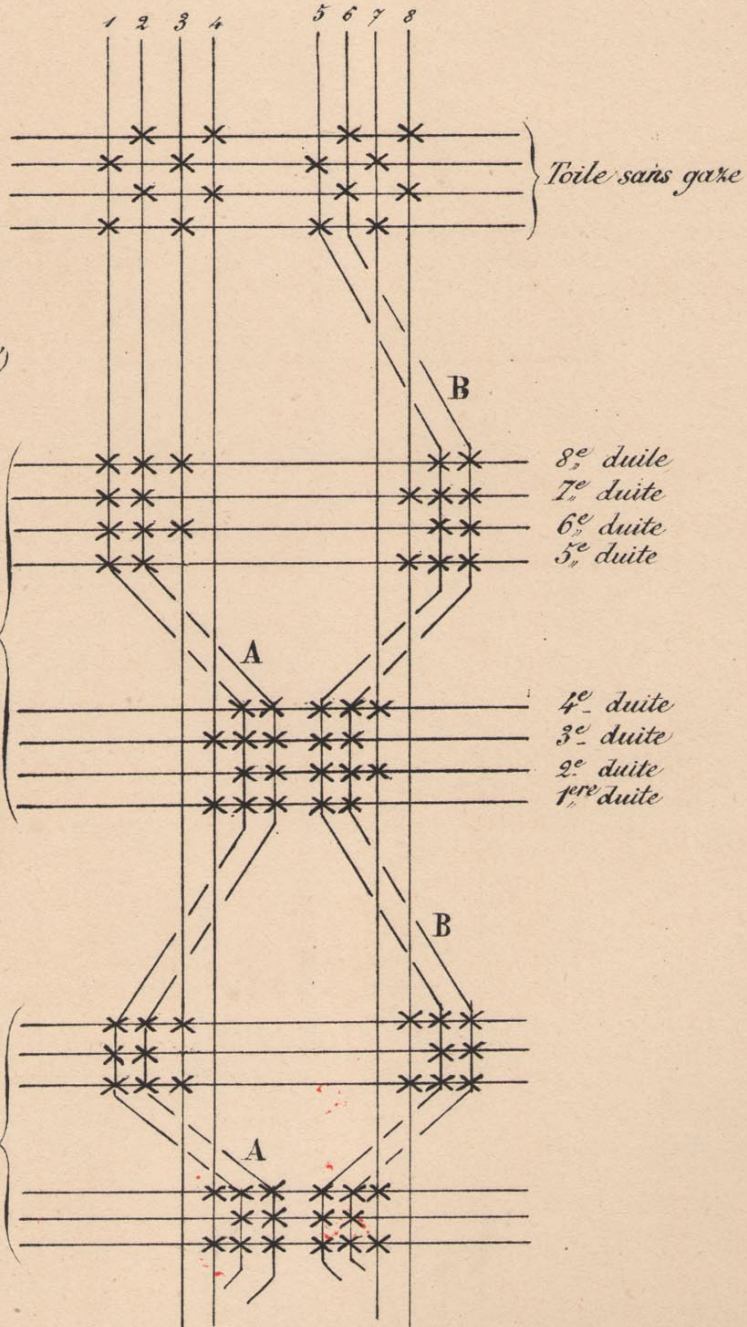


Fig. 219.



Fond, 4 duites
dans le même pas

Fig. 220



Fond par 4 duites
dans le même pas
(Voir l'analyse du trame')

Fond par 4 duites
dans le même pas
(Voir l'analyse du trame')

Fond par 3 duites
dans le même pas

Fig. 221

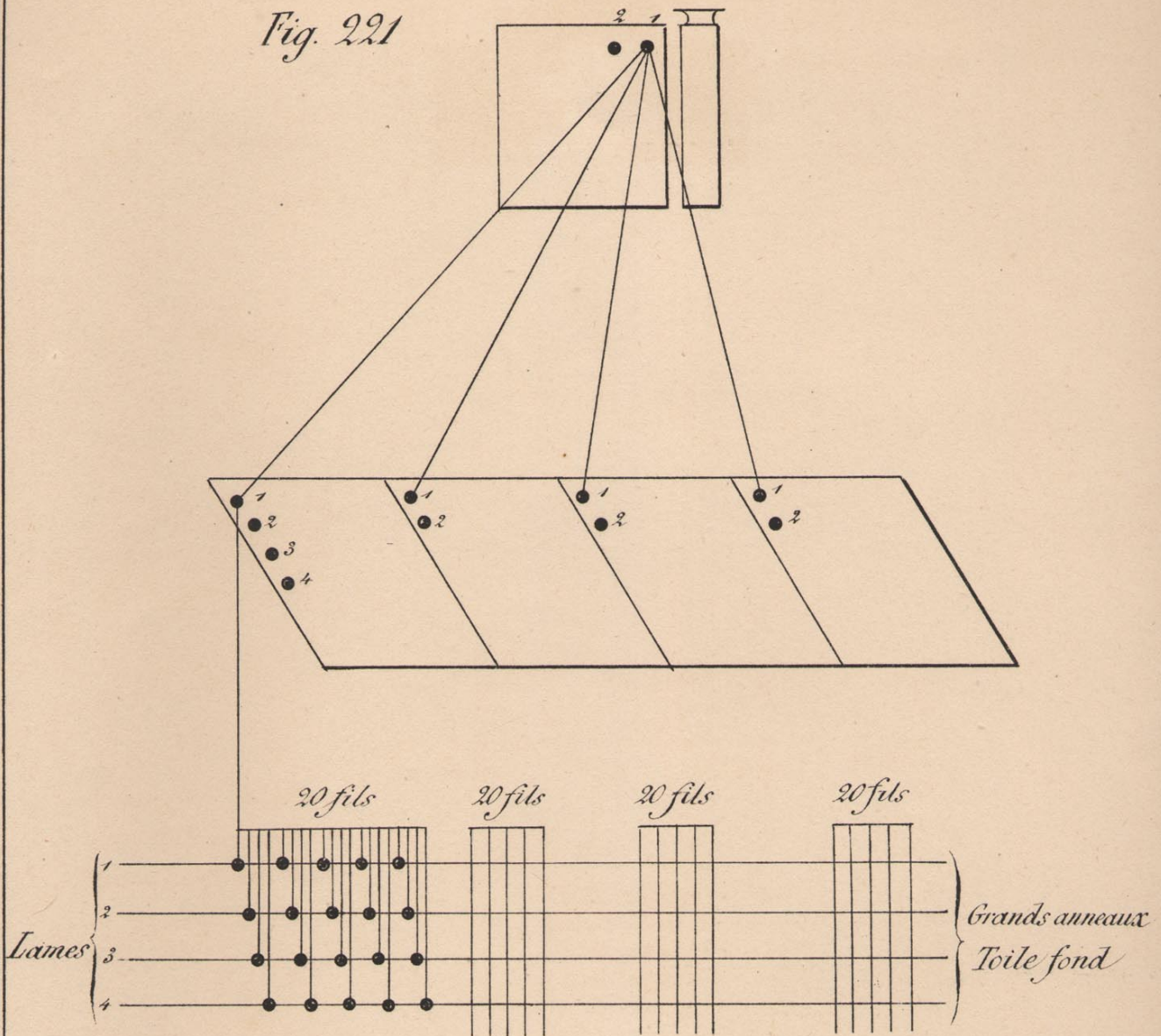


Fig. 222

Boite & Cylindres

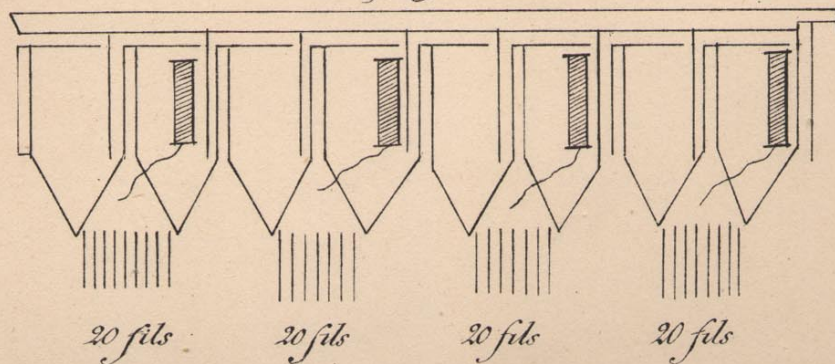
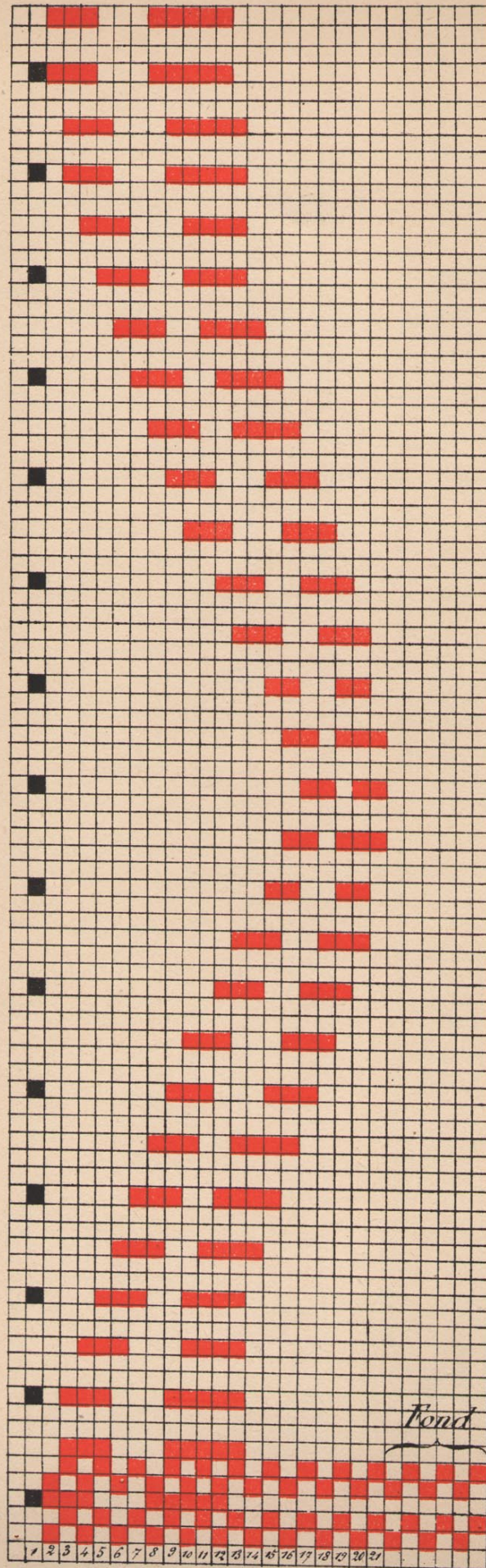


Fig. 223



2
Toile
Toile
1
Toile
Toile

Fond

1 2 3 4 5 6 7 8 9 10 11 12 13 14 15 16 17 18 19 20 21

Fig. 224

