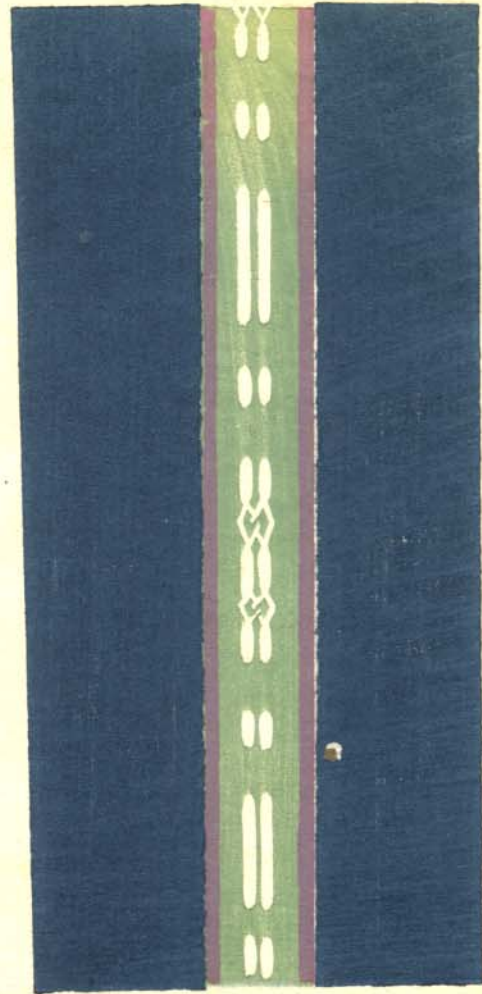
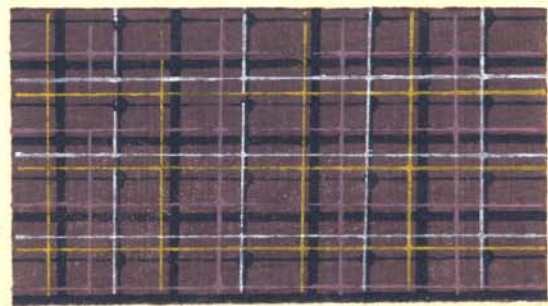




弦 灯 籠



子 格 う た や



蔓 蔭 日



雪の空



子梧子陸



蜀紅異文



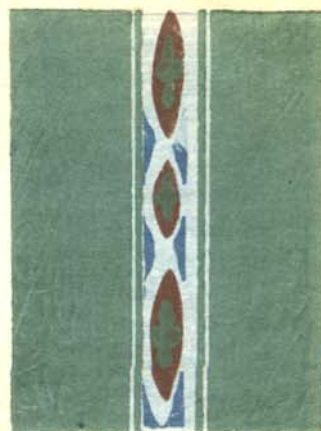
角之屯



前 表



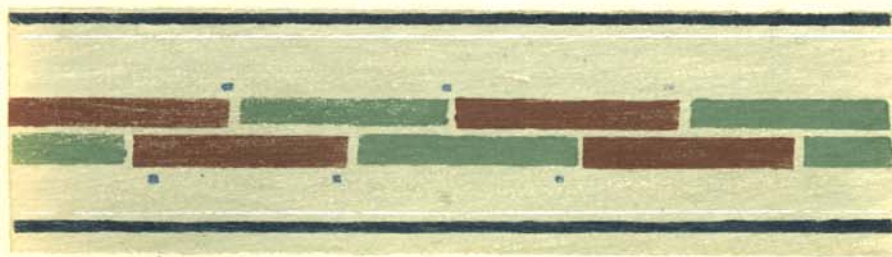
乙 乙



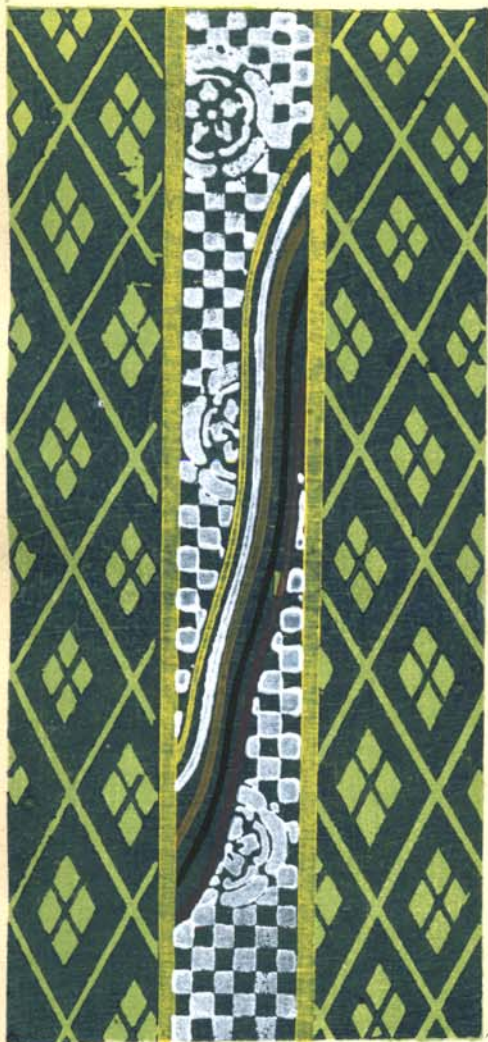
乙 乙 乙 乙



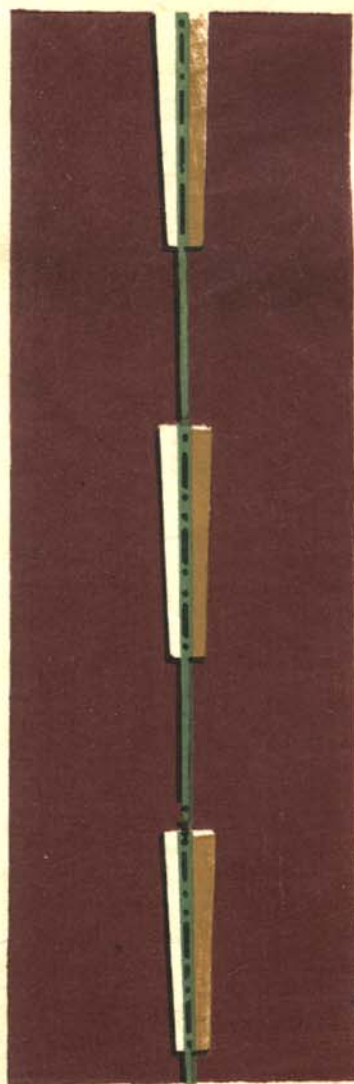
乙 板



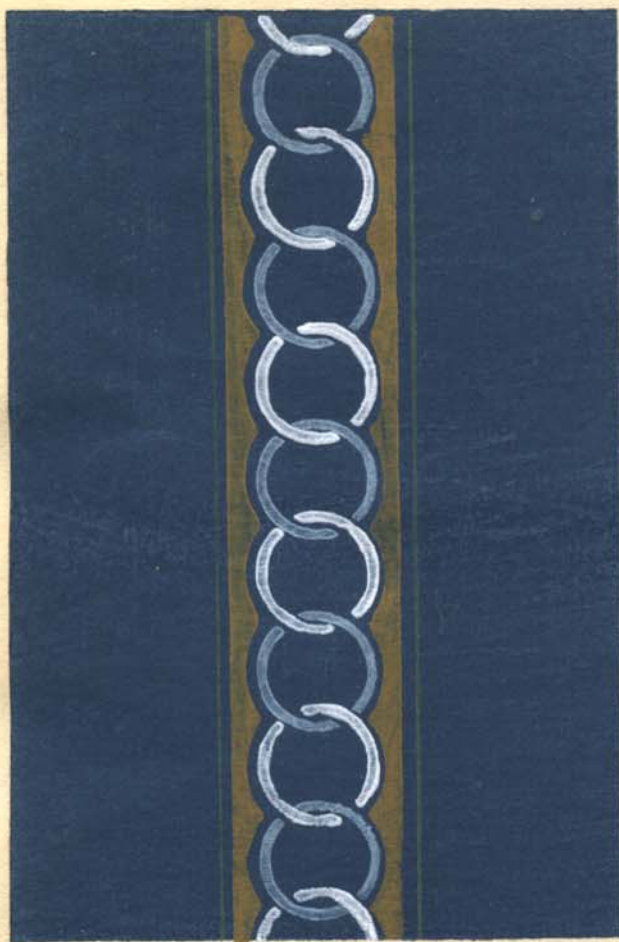
し 去 子 引



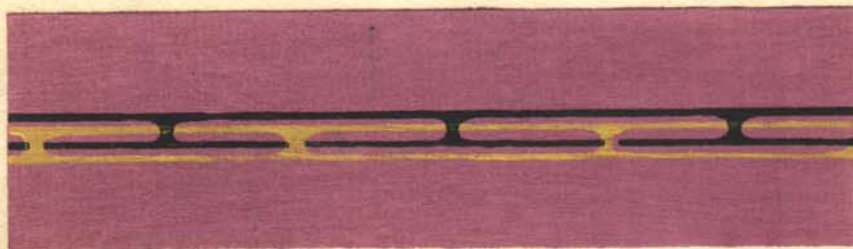
廣 末



ひかち輪



まじろ水





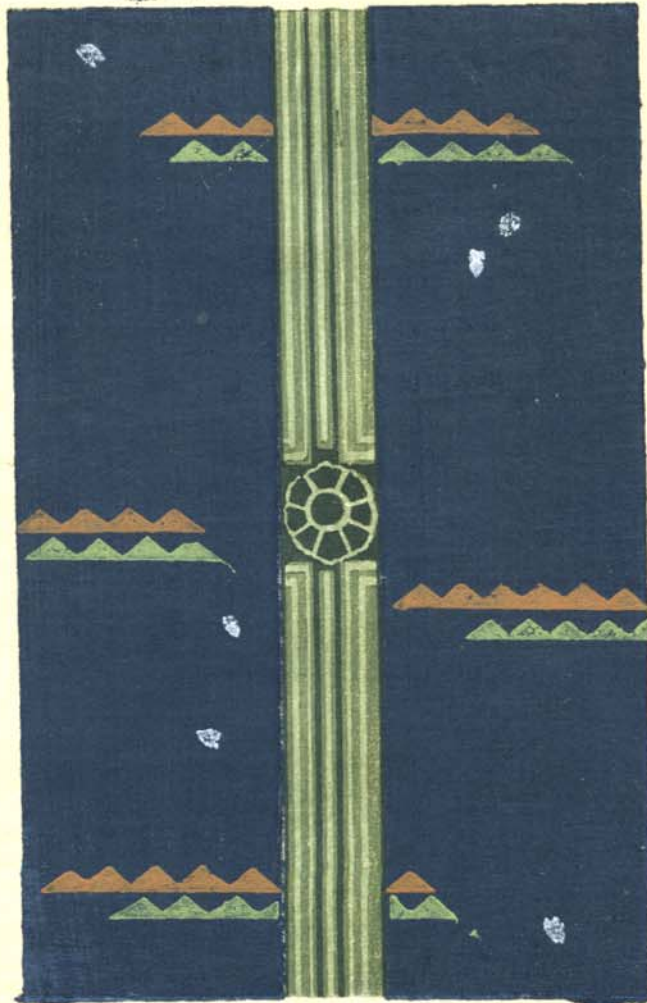
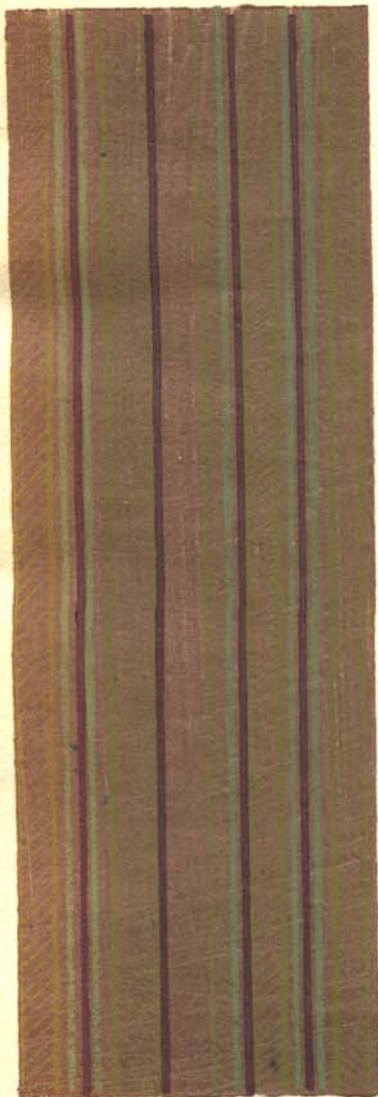
Burns, C.

~



鐘のひあひ

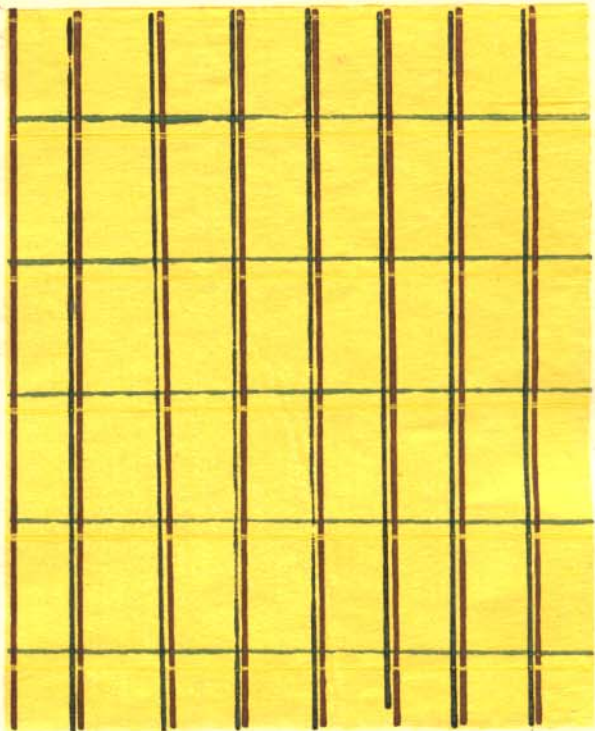
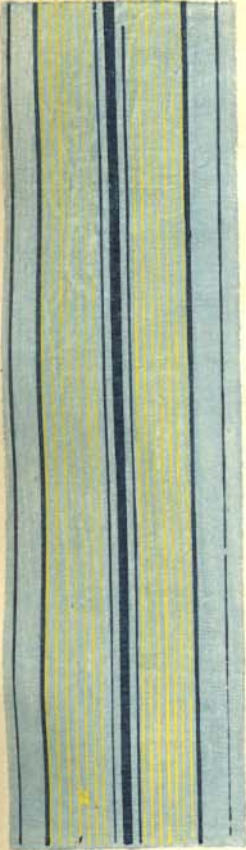
恒橋



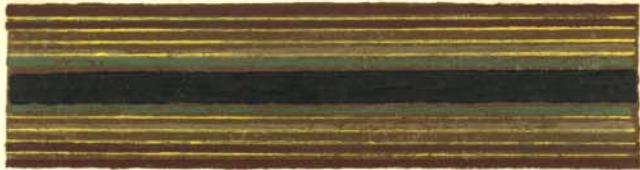
入子柄

東 度

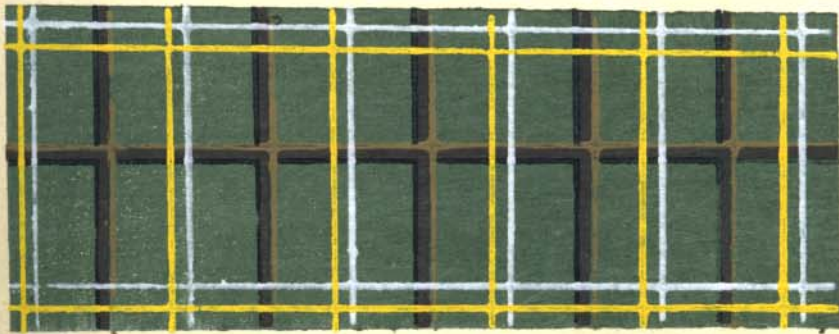
三
四
五
六
七
八
九
十



じ す み



重
ね
糸
交



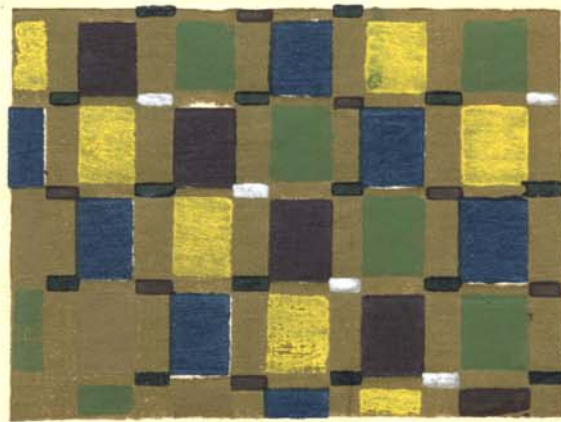
らたや



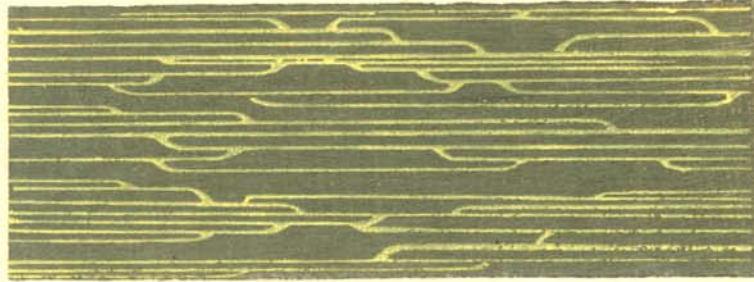
ほとくお



东 廣



文 異 雷



しすくねやき



鏡 や 河

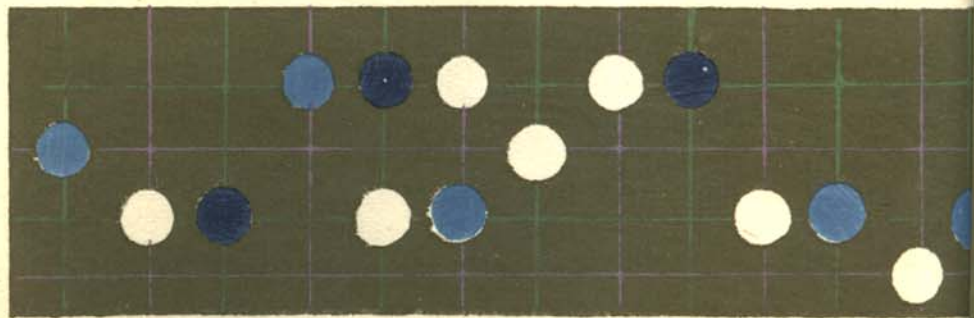


卷 五 七

卷 引 色



引 色 八



若
松

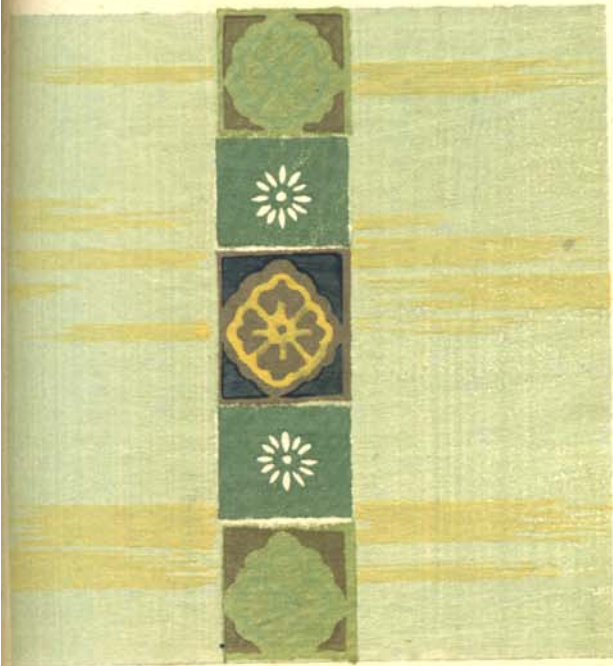


八
雲



世
心
ま
ん

し
ん



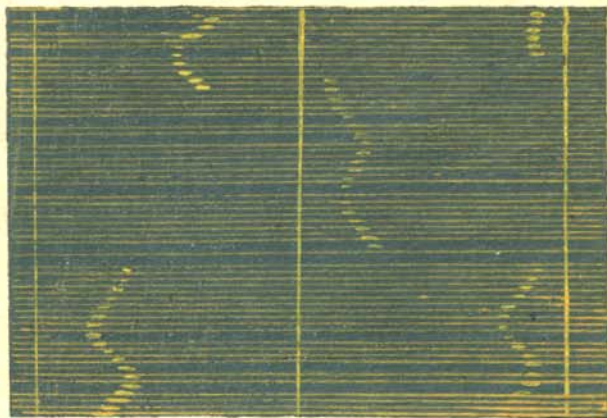
きなつりほ志



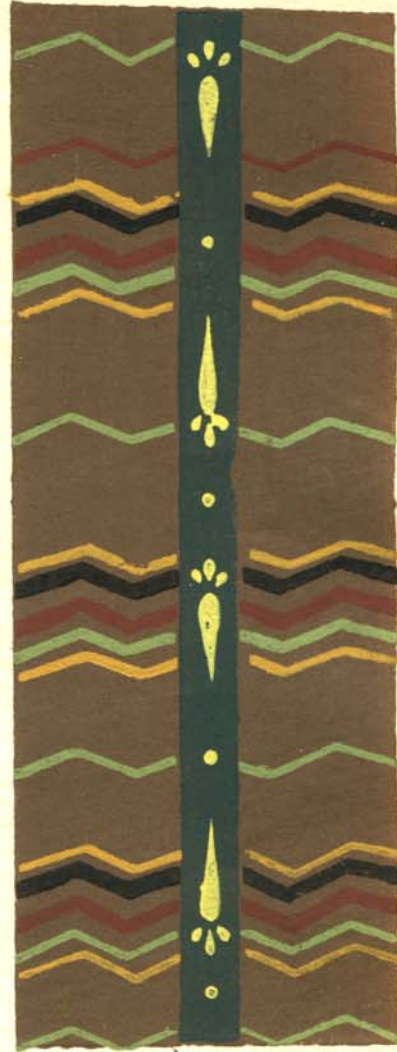
ひらわ早



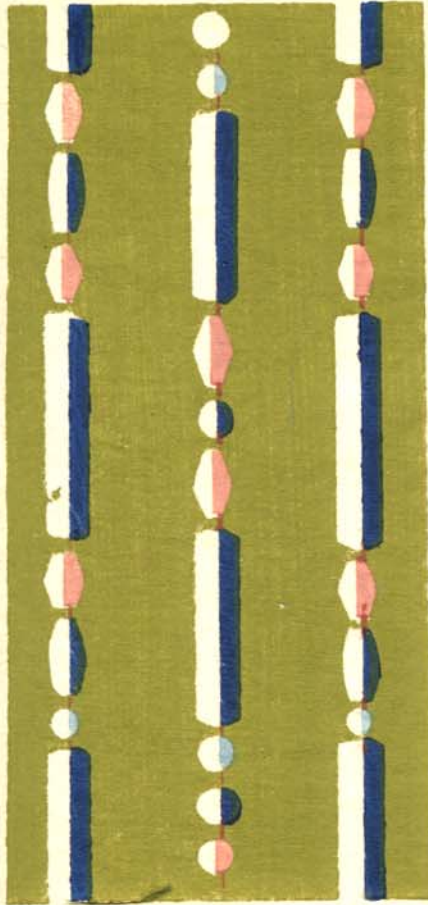
れたす



透子丁



まのま



るつひ



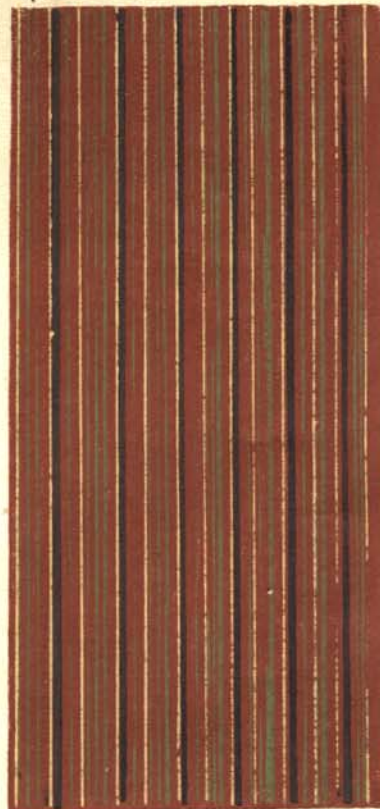
菱 色



卅 系



菱 花



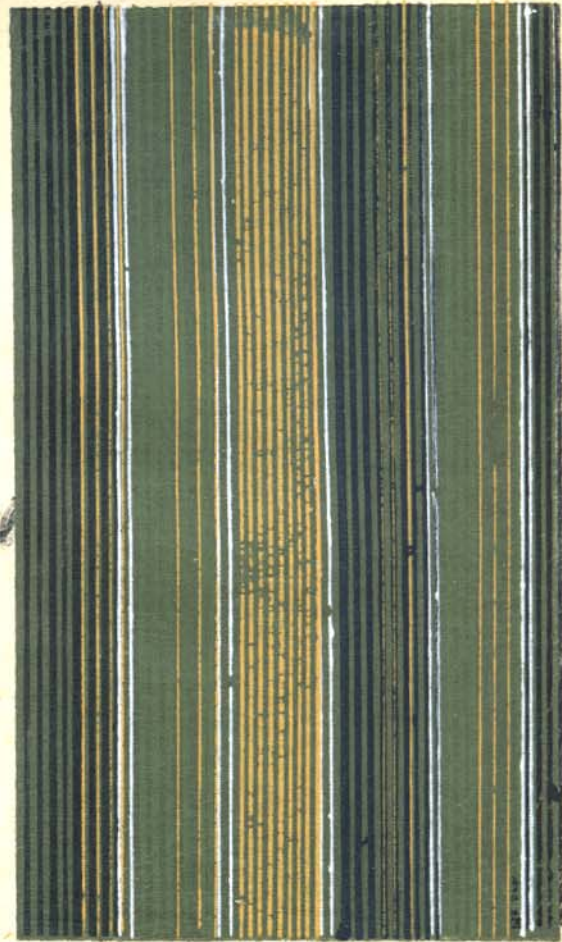
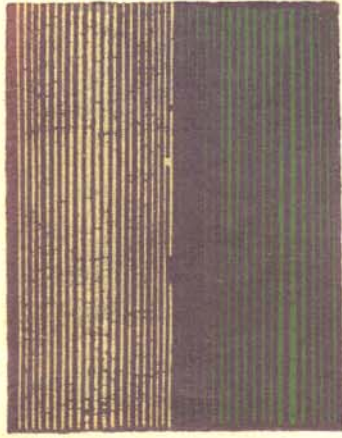
七
ん
と
め



七
ん
と
め
子

紫 若

雨 春



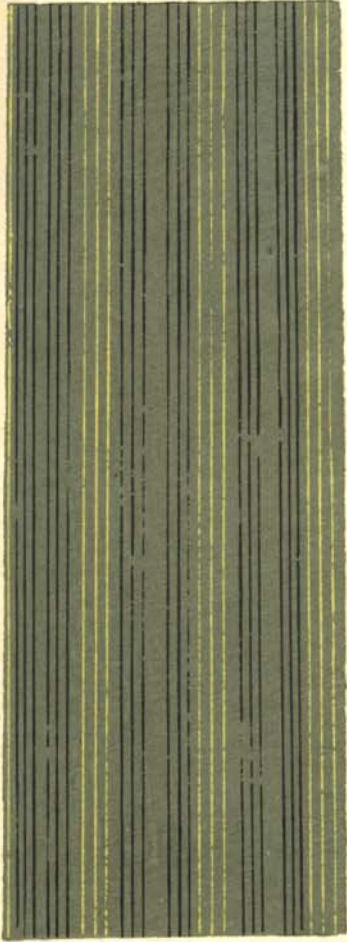
方 子



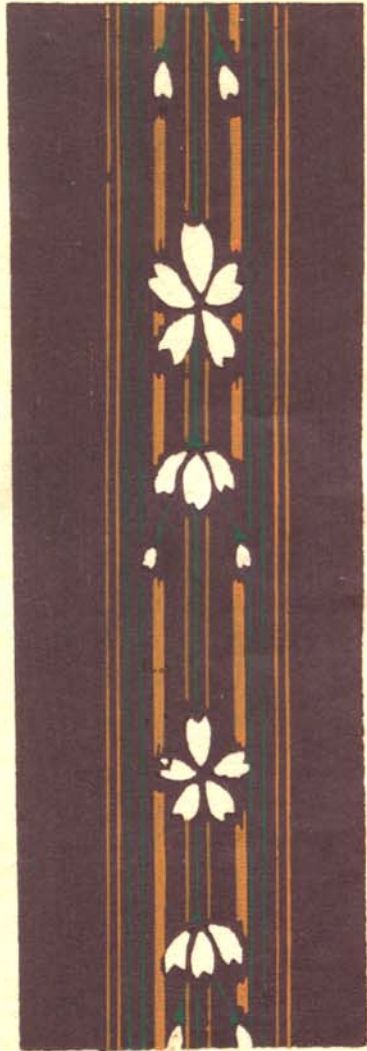
親 子



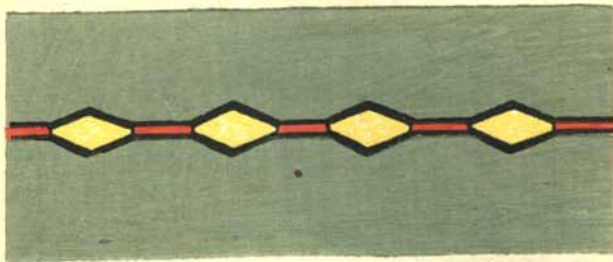
三
線



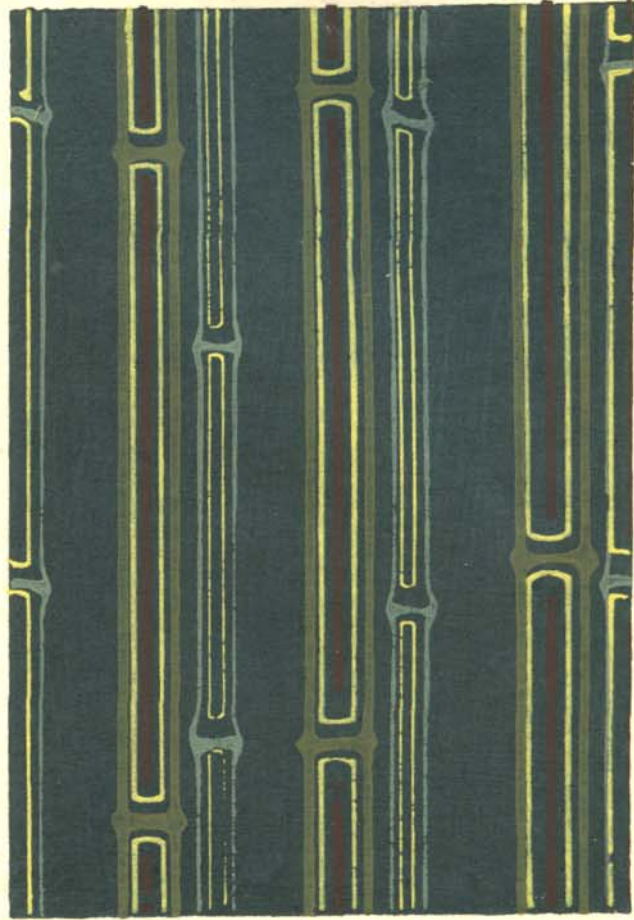
三
線



三
線



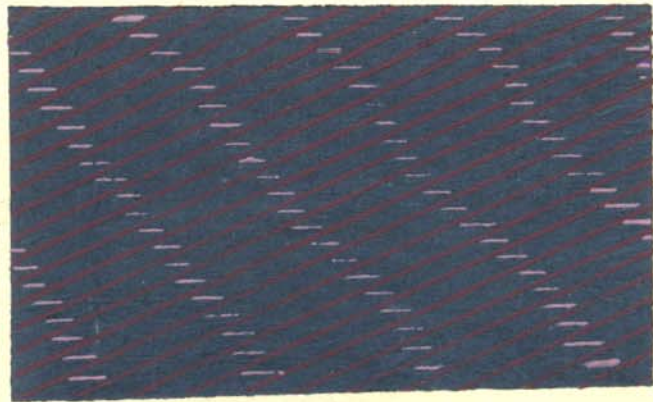
井 割



紅 米 雁



み 子





紫
竹

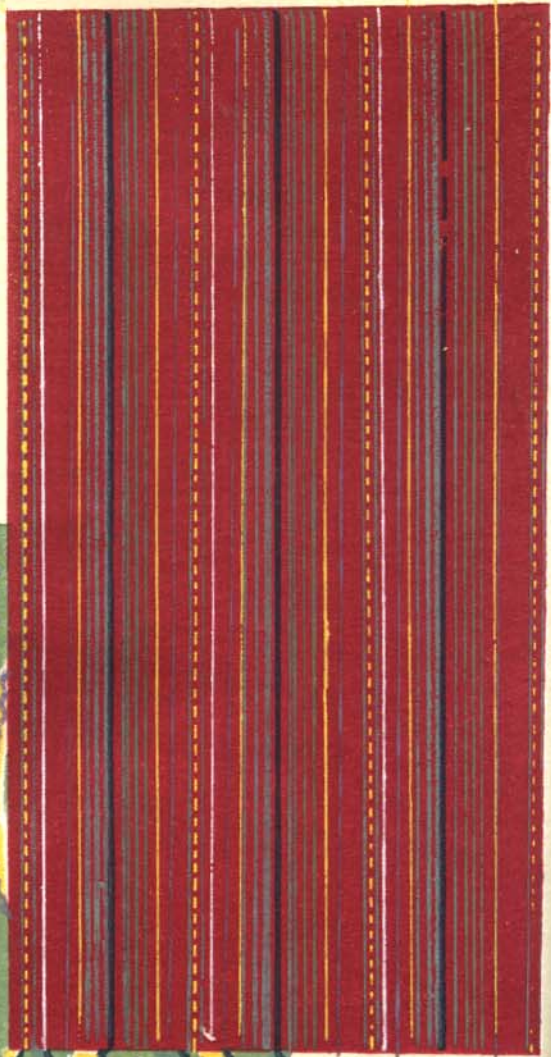
へ か 切



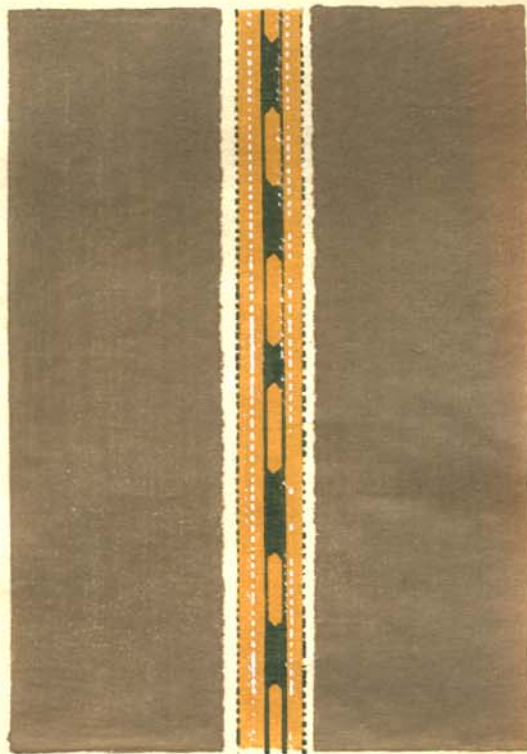
り せ 之



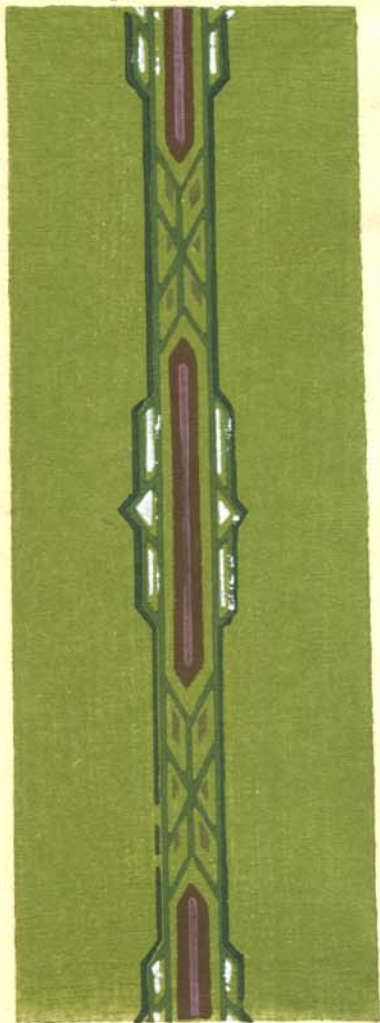
21 ± 8



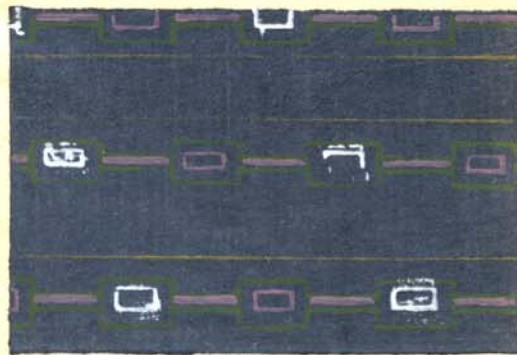
あまのり



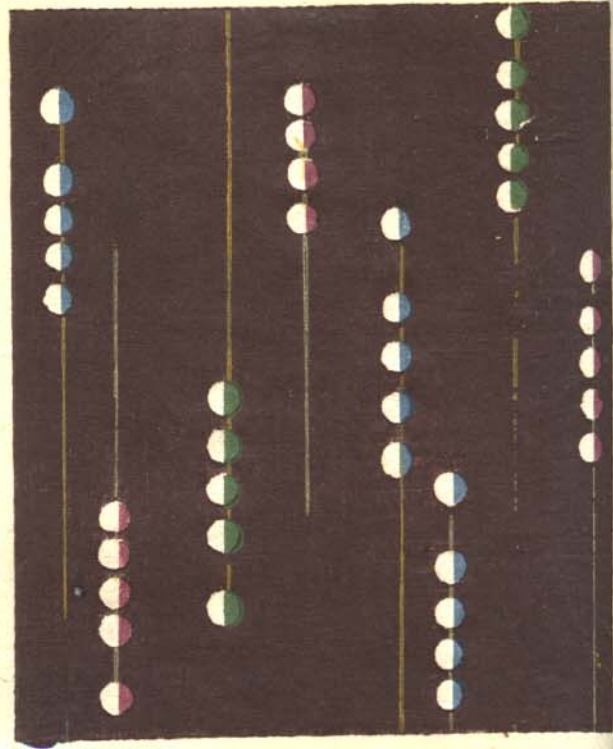
純



あまのり



しらゝ美



らたや竹



名 竹



けかりよ



け
—
よ



け
—
よ

茶
玉



き
あ
つ



榎
柳

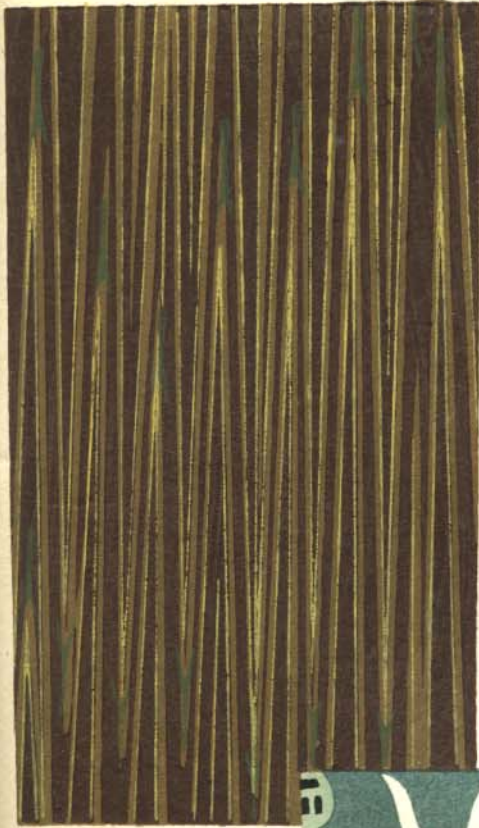


菱
花
の

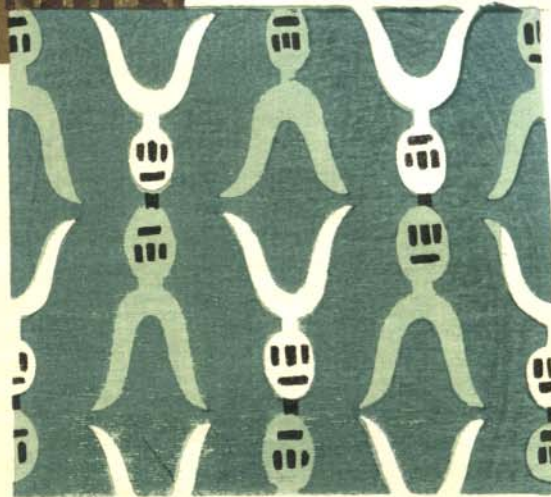
矢 之 根



松 葉



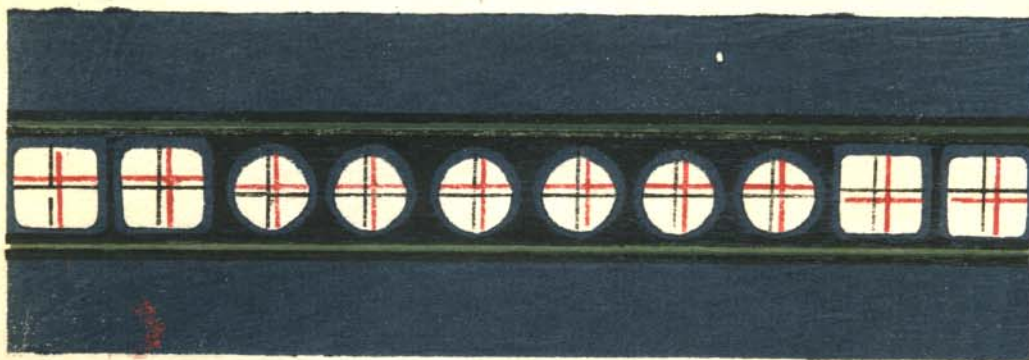
矢 之 根





Handwritten text, possibly a signature or label, written vertically on the right side of the fabric strip.

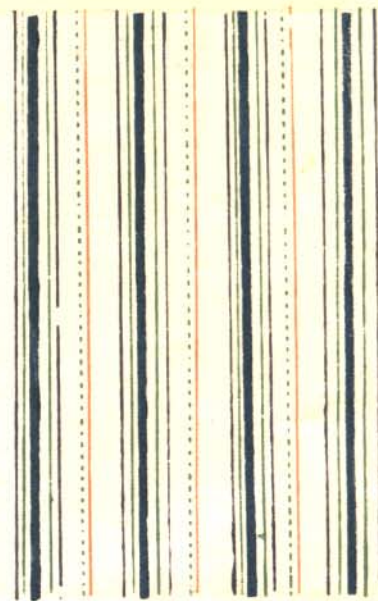
帯之石



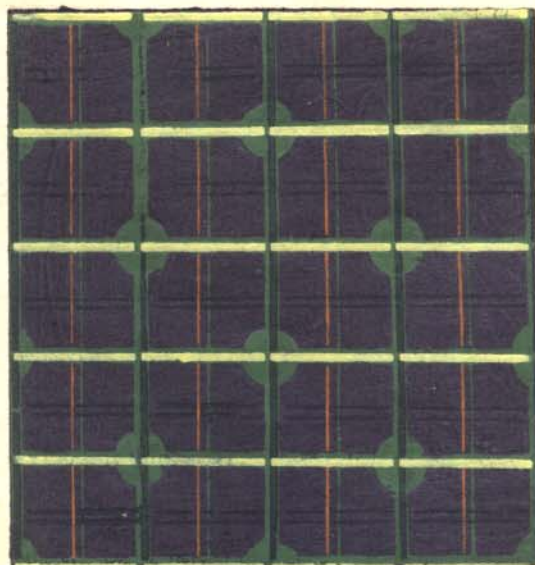
りはさくど



き 縞



ん は お



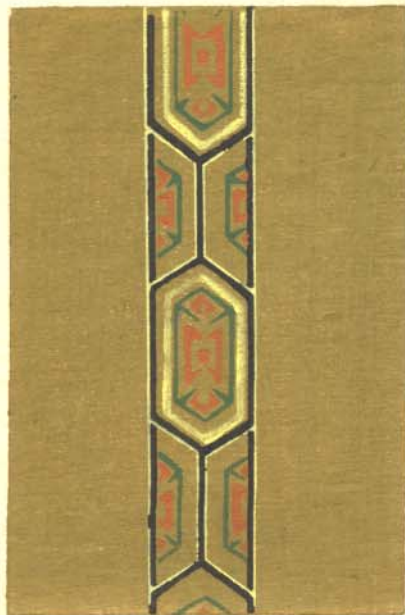
高麗の流



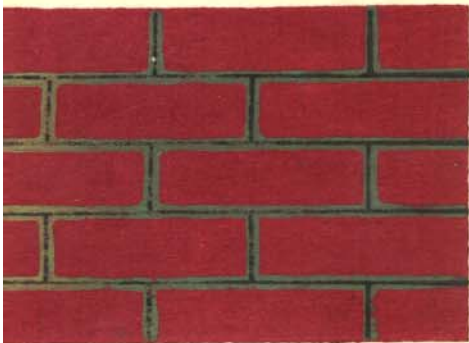
芭菱



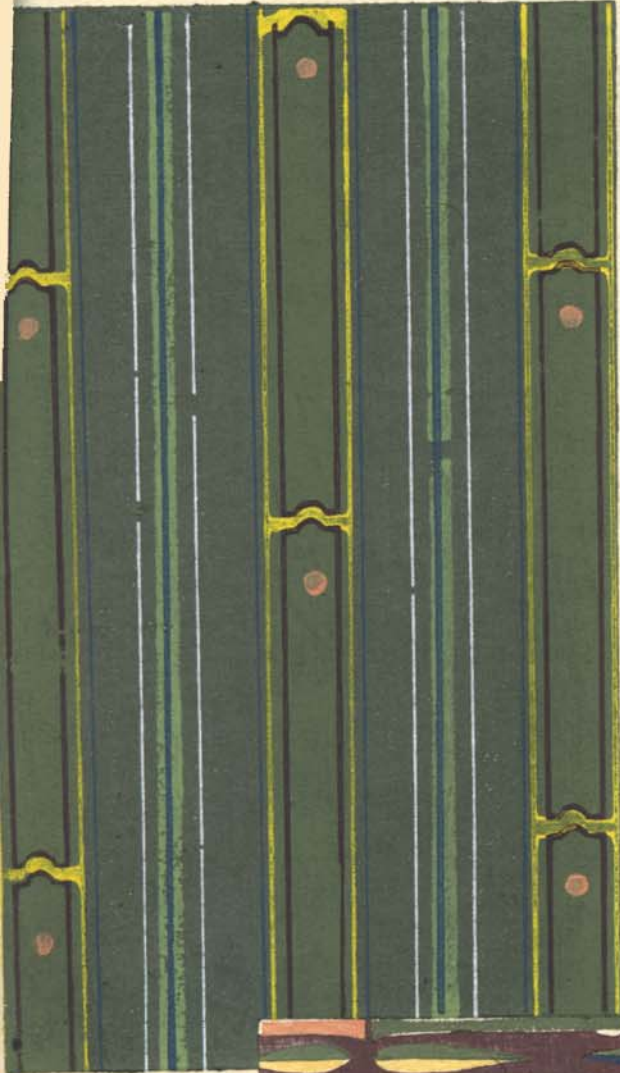
龜甲



斗方瓦



志保つりなま



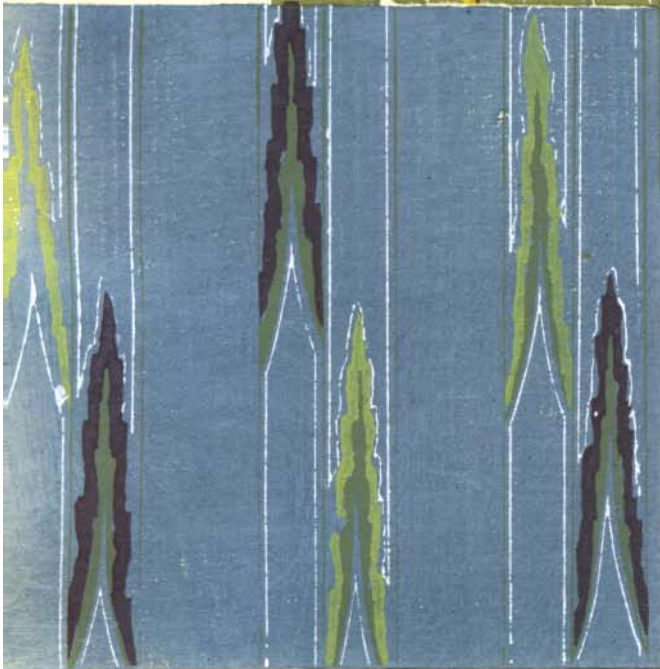
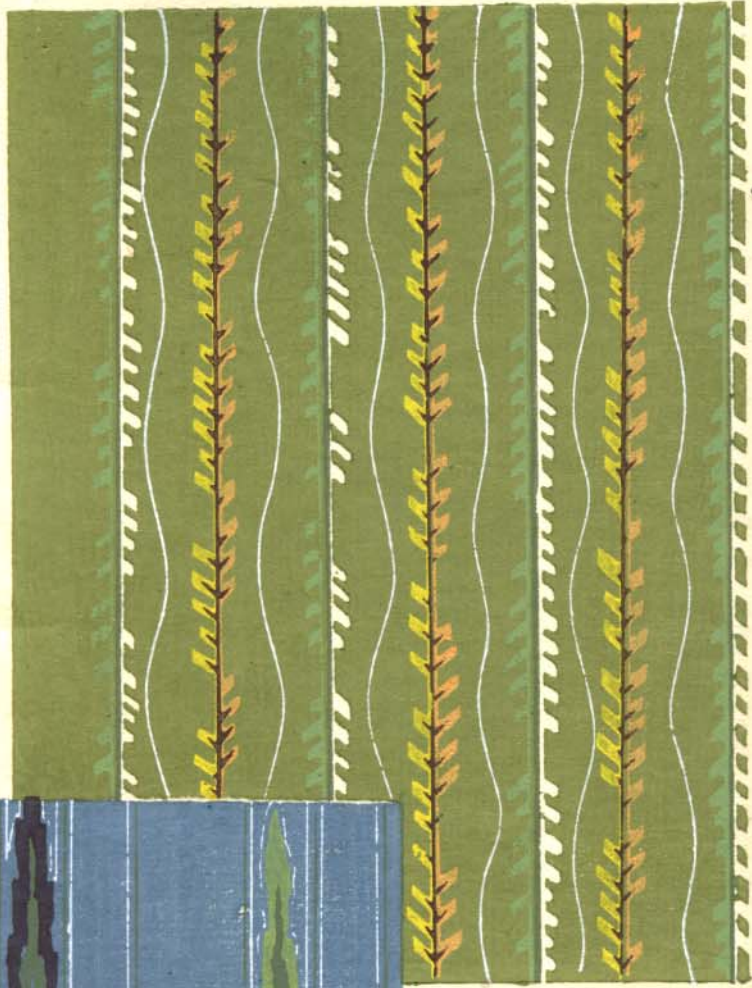
志保つりなま



志保つりなま



杉
子
葉



杉

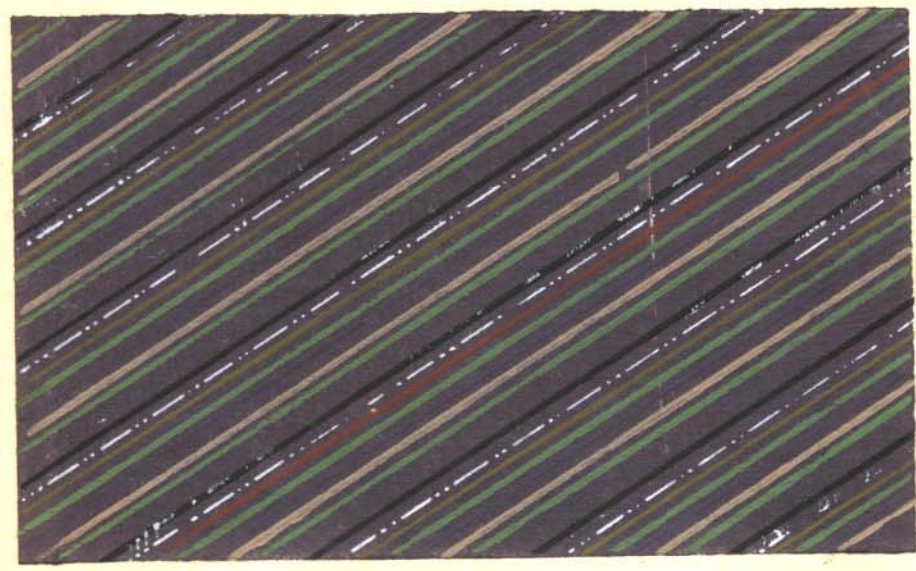
子

葉

う 何



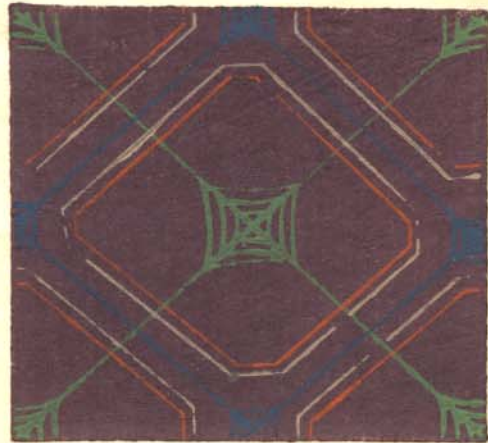
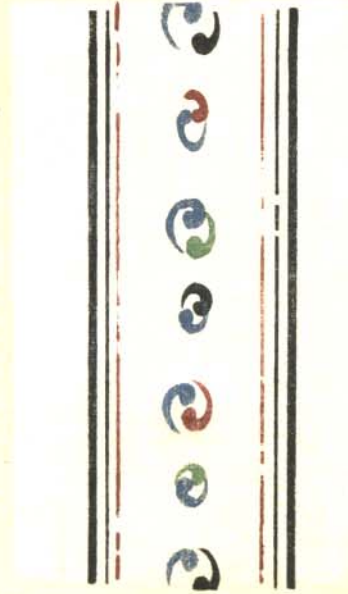
みす子指



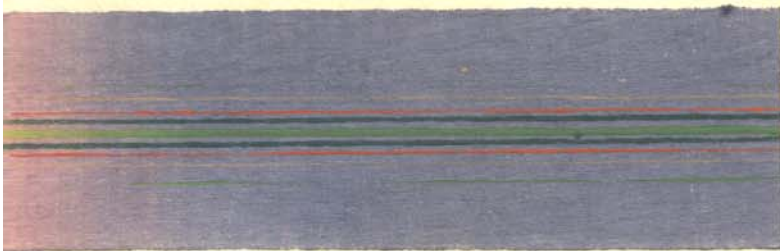
七宝の家



も せ



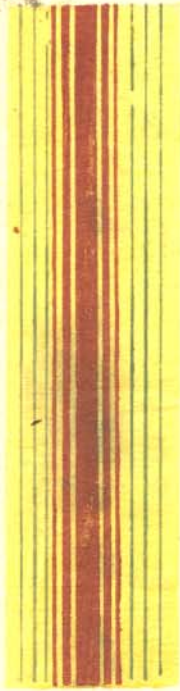
すみ親子



蜀の異紋

梅 峯

木
三
系



松

葉

雨宮浦



池田



春之野





色

平

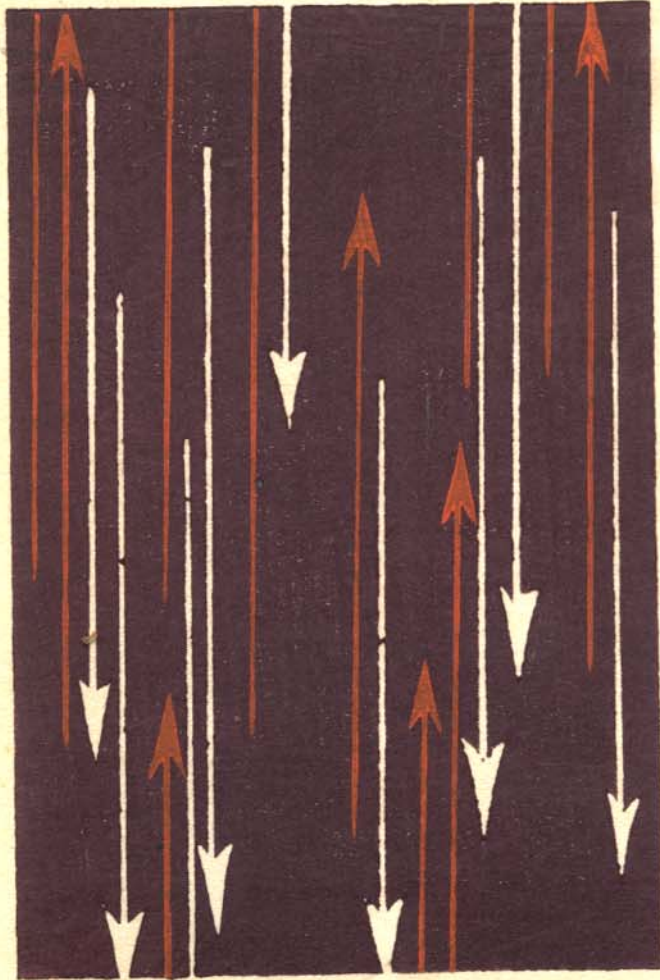
引

糸



源

字



七

子

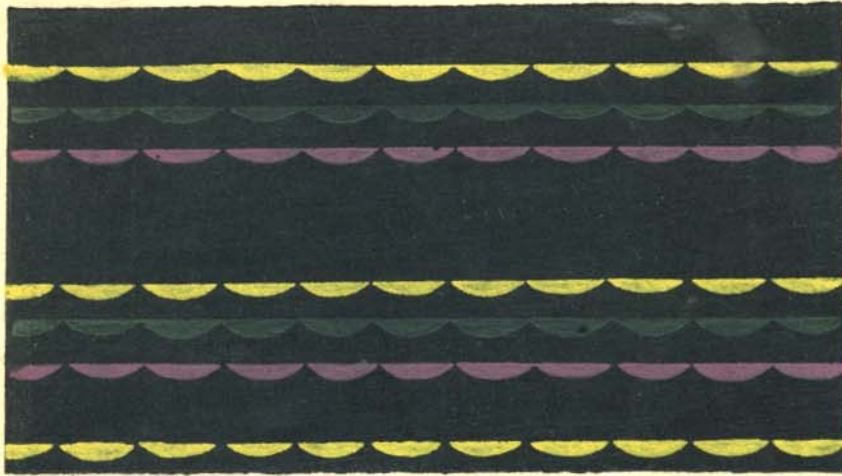
徳

依



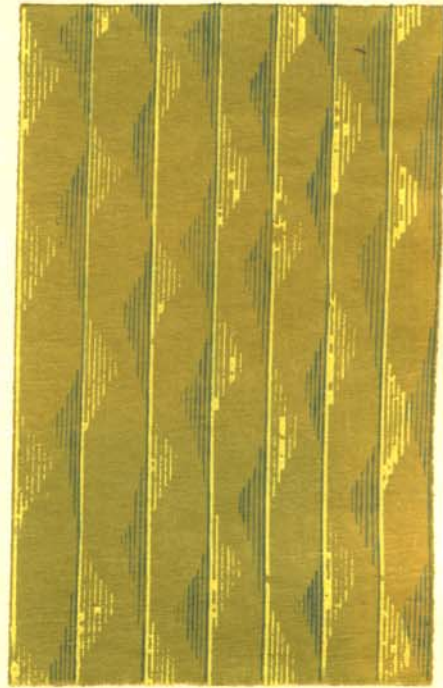
ゆき
の
う
ろ

孔
糸



垂
枝

夕
糸
屯



三五七



三 五



内一紙圖案の書と多く

せよ出ははむとくまゝの縞の紙

集りーものち多様とてを

とれぬとれと木曾乃麻

布のちかおのちあひらぬ

251

志海一磨

上