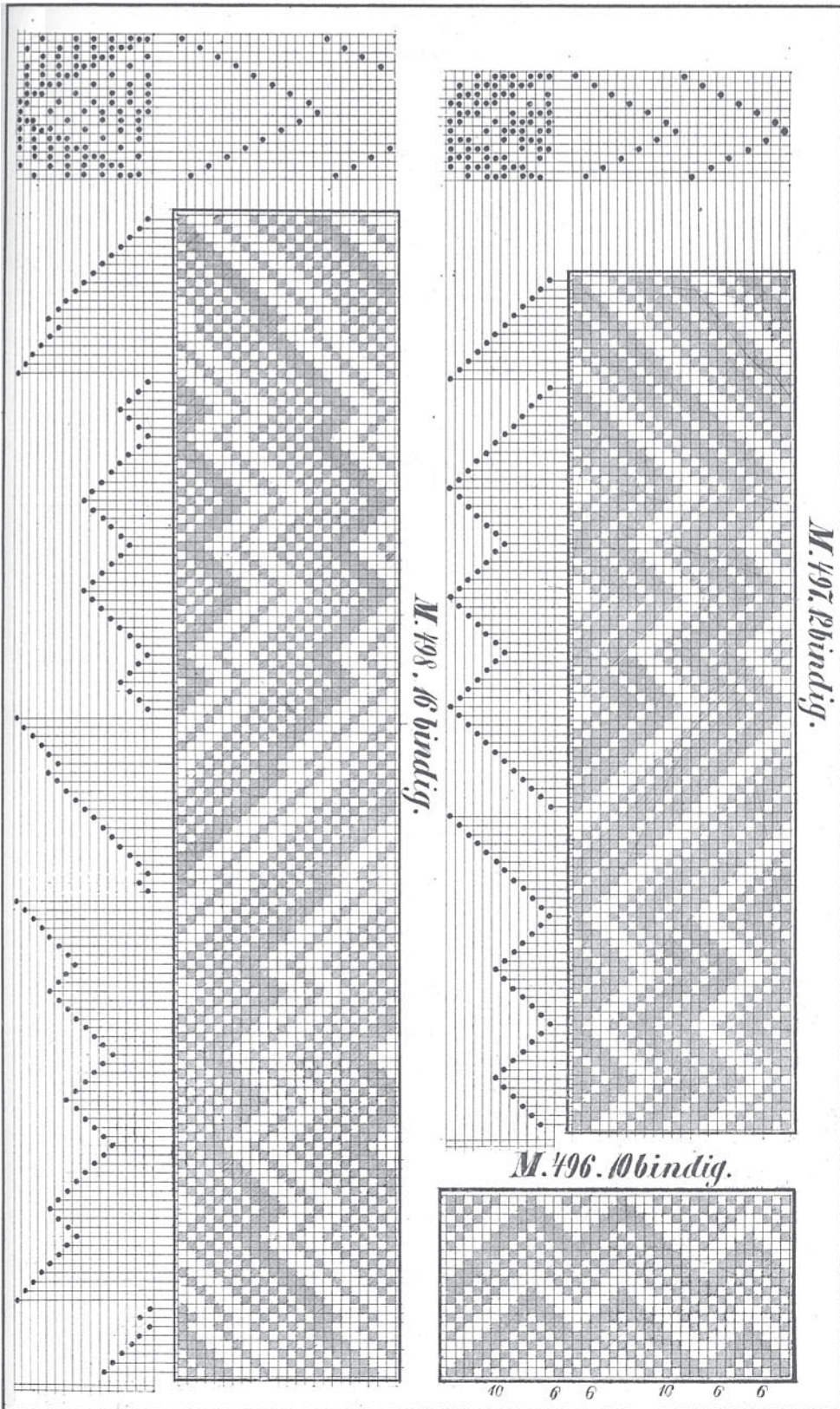


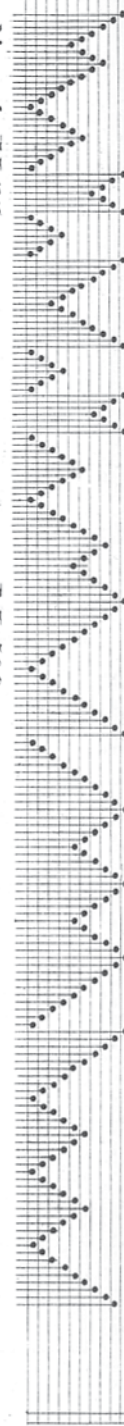
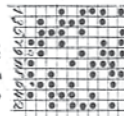
Taf.68.



Taf. 69.

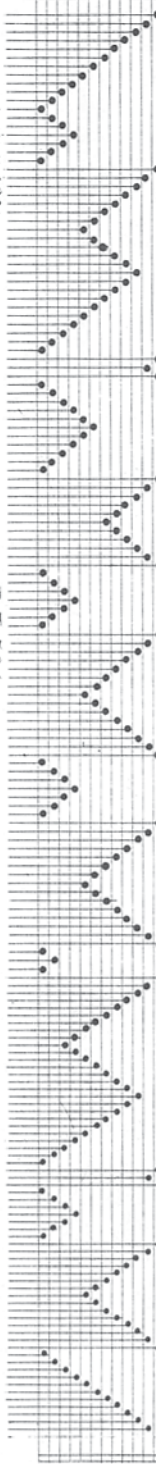
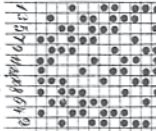
10 bindig wie M. 165.

M. 499.



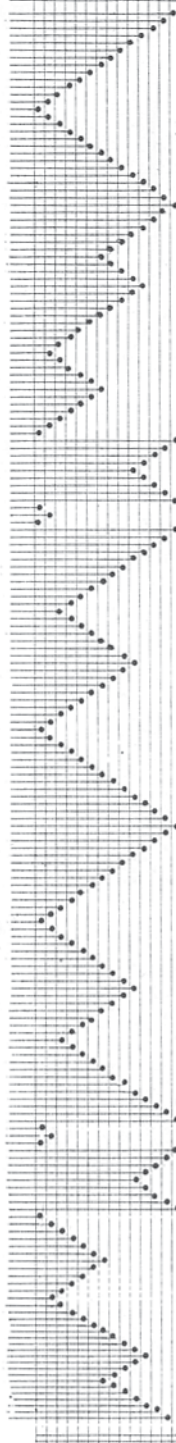
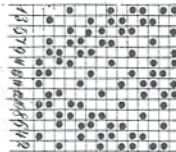
19 bindig wie M. 175.

M. 500.



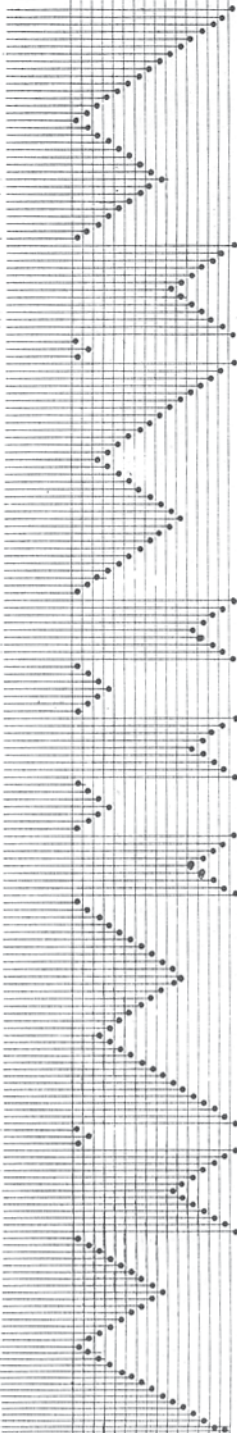
14 bindig wie M. 134.

M. 501.



16 bindig wie M. 186.

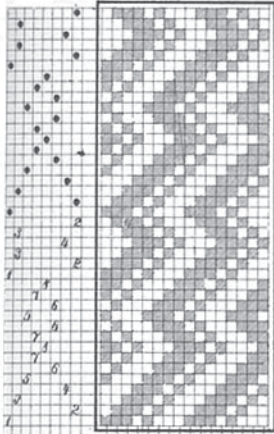
M. 502.



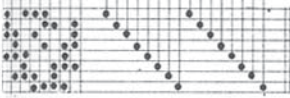
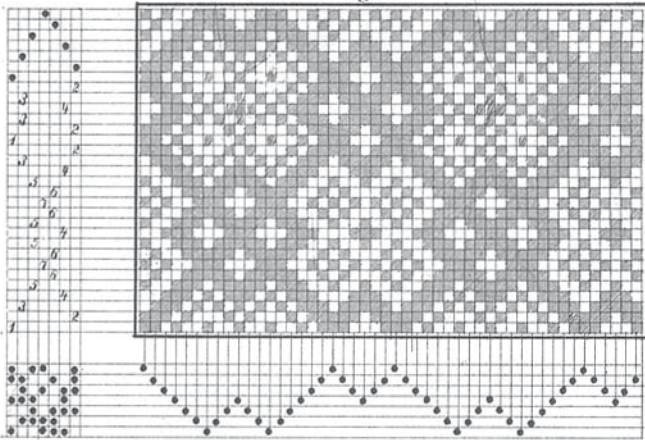


Taf. 70.

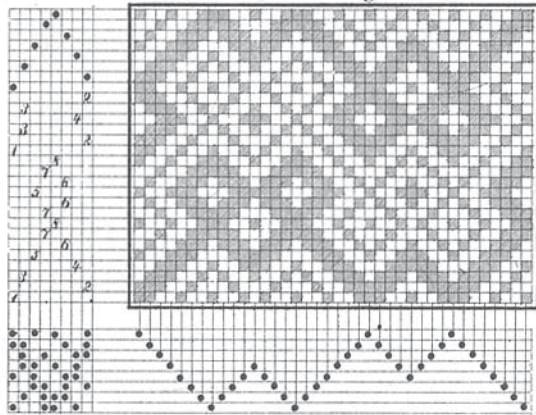
M. 503.  
8 bindig.



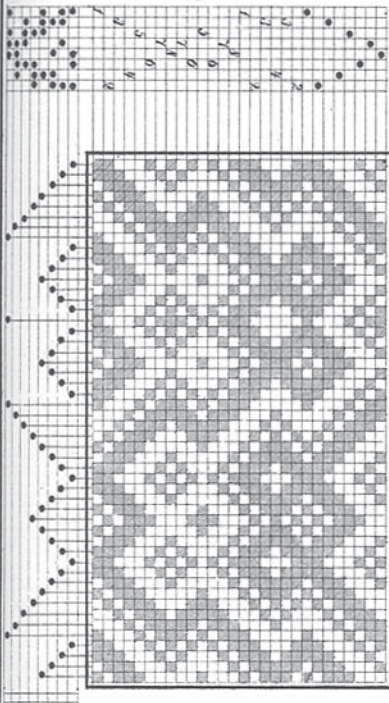
M. 504.  
7 bindig.



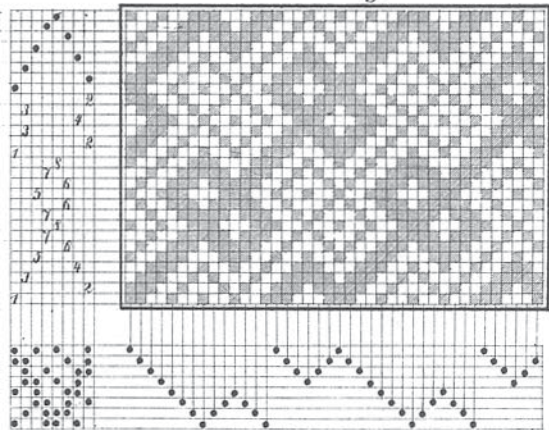
M. 506. 8 bindig.



M. 507.  
8 bindig.

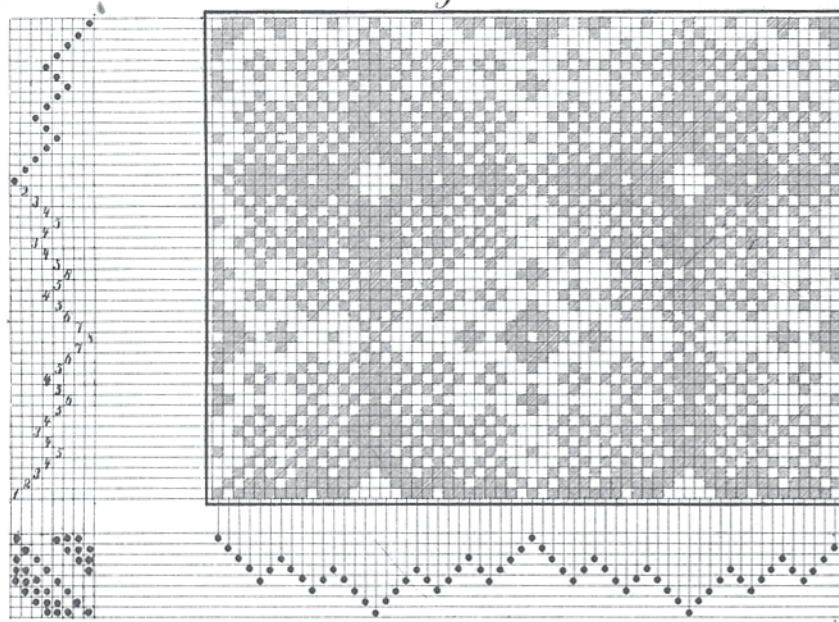


M. 505. 8 bindig.

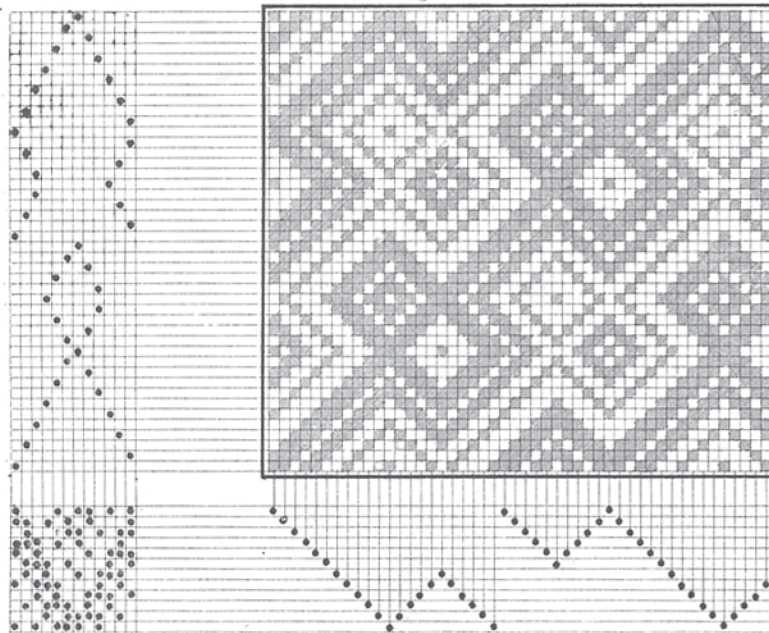


Taf. 71.

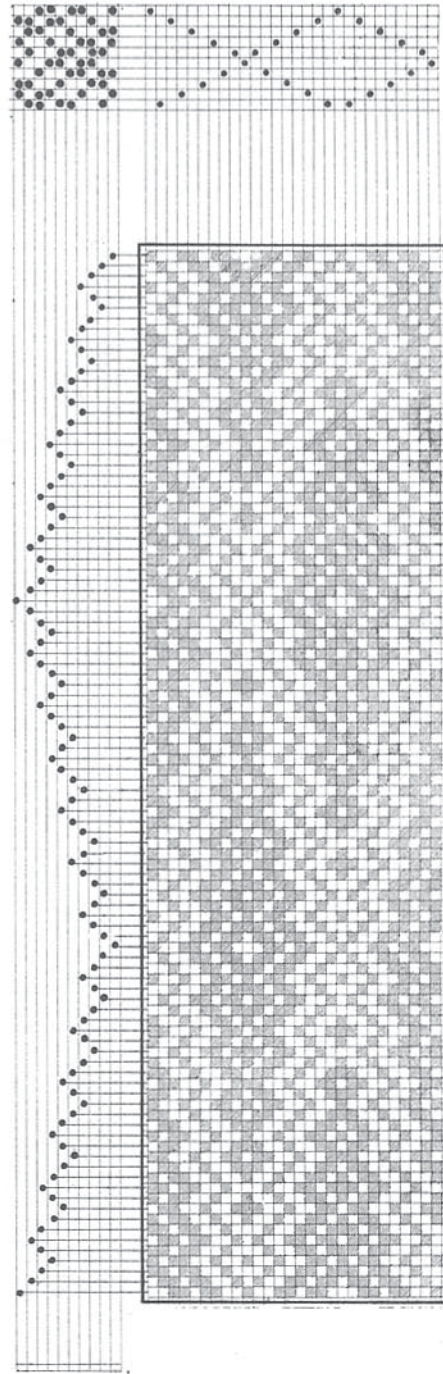
*M. 508.*  
*8 bindig.*



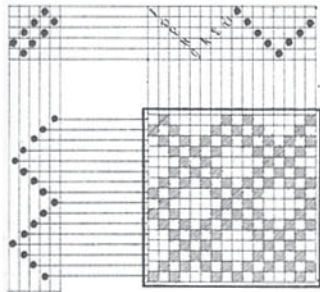
*M. 510.*  
*12 bindig.*



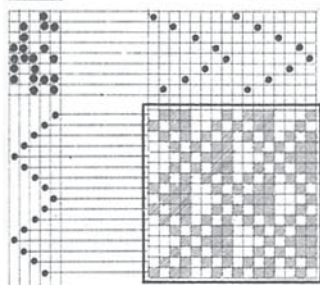




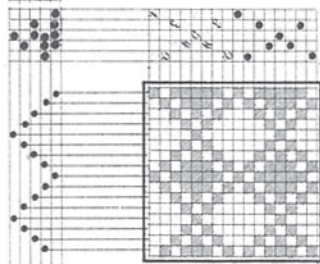
*M. 509. 10 binding*



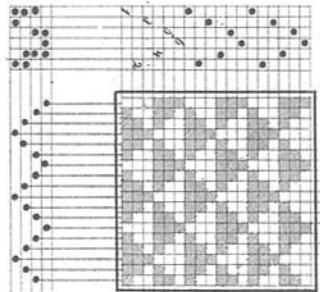
*M. 511.*



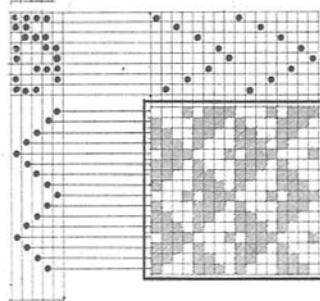
*M. 512.*



*M. 513*



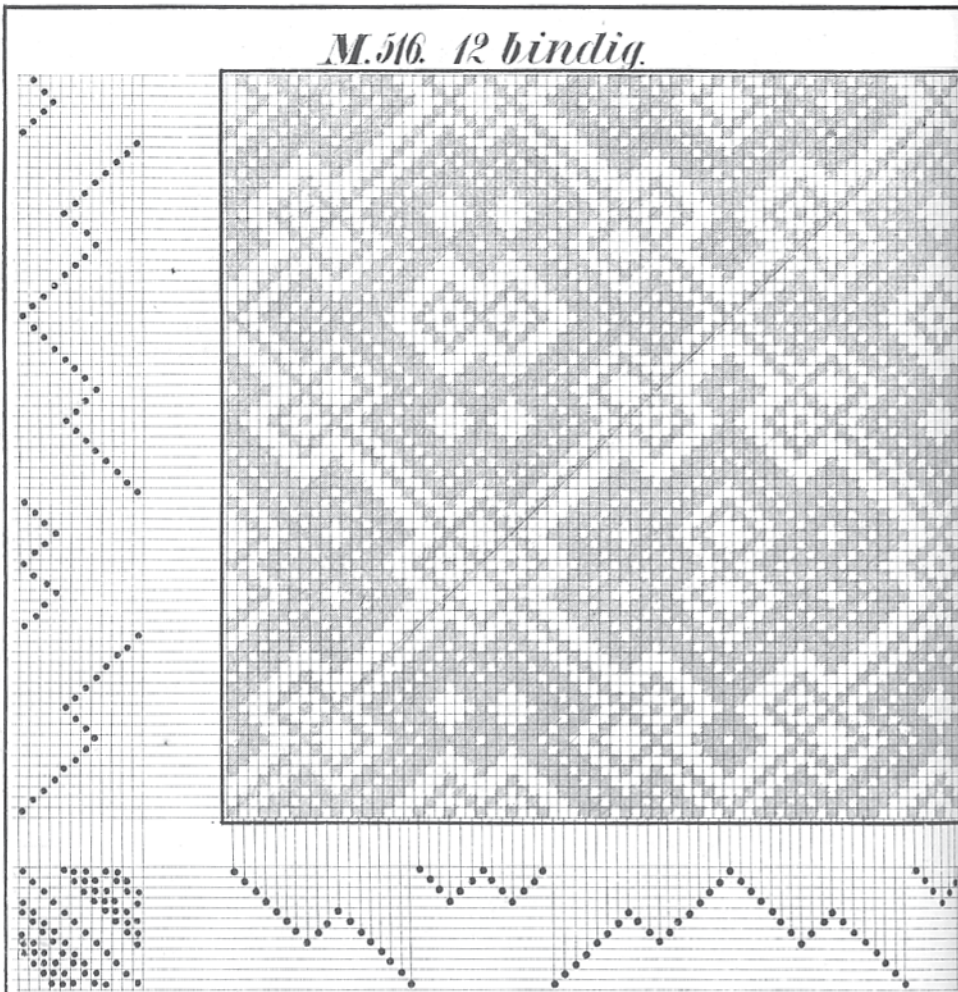
*M. 514.*



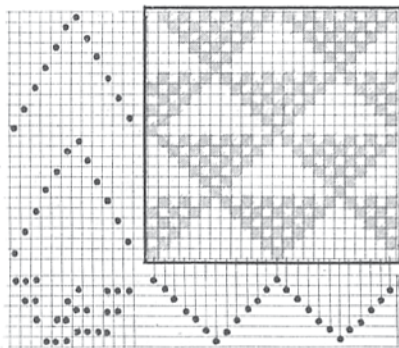
*M. 515.*

Taf. 73.

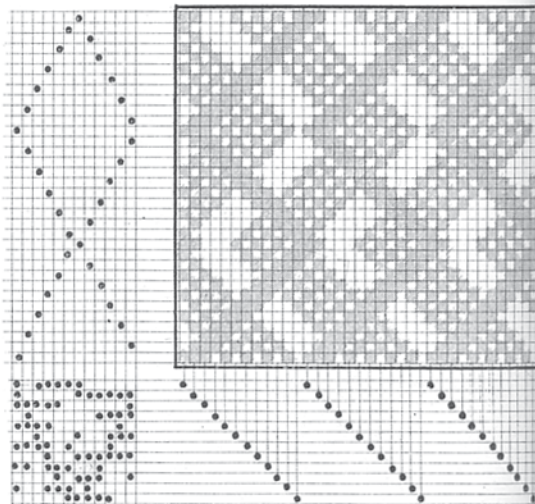
*M. 516. 12 bindig.*



*M. 517.*



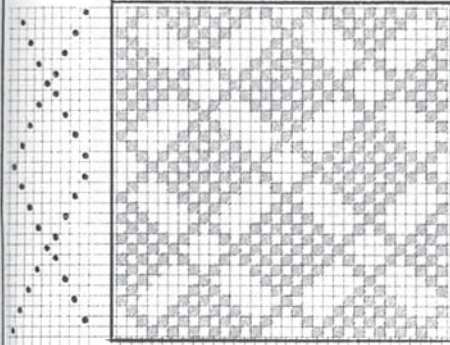
*M. 518.*



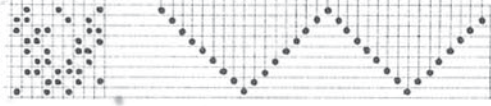
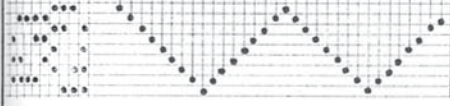
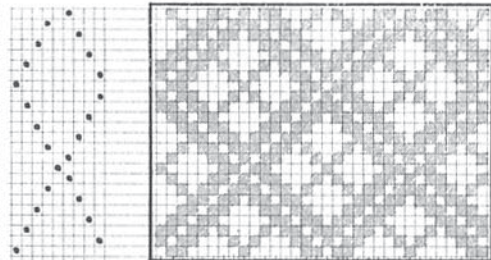


Taf. 74.

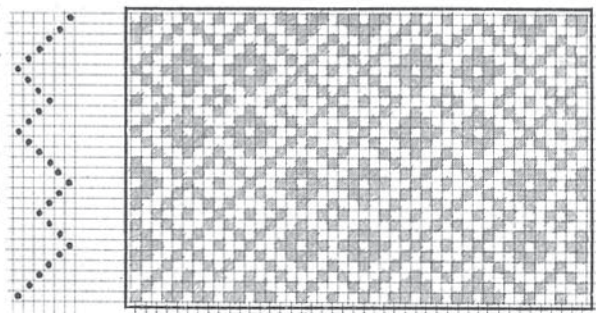
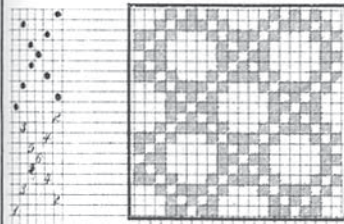
*M. 519.*



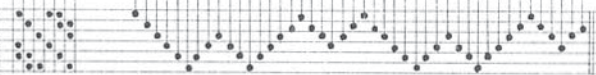
*M. 520.*



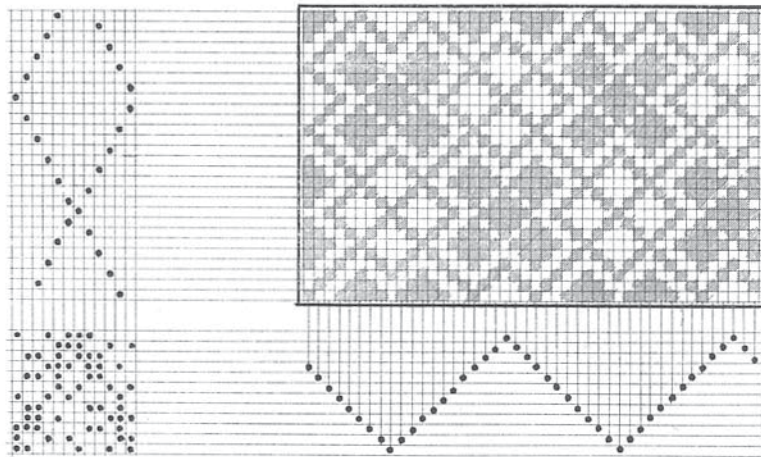
*M. 521.*



*M. 522.*

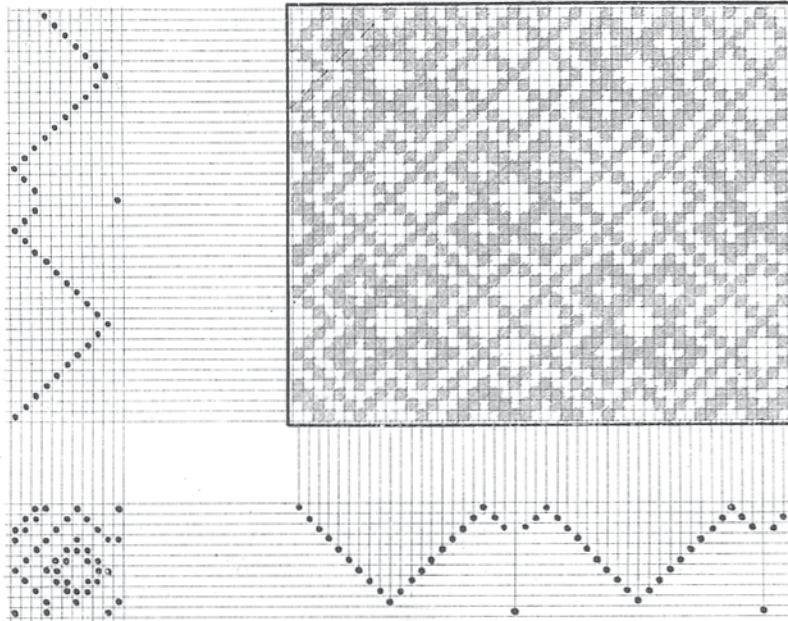


*M. 523.*

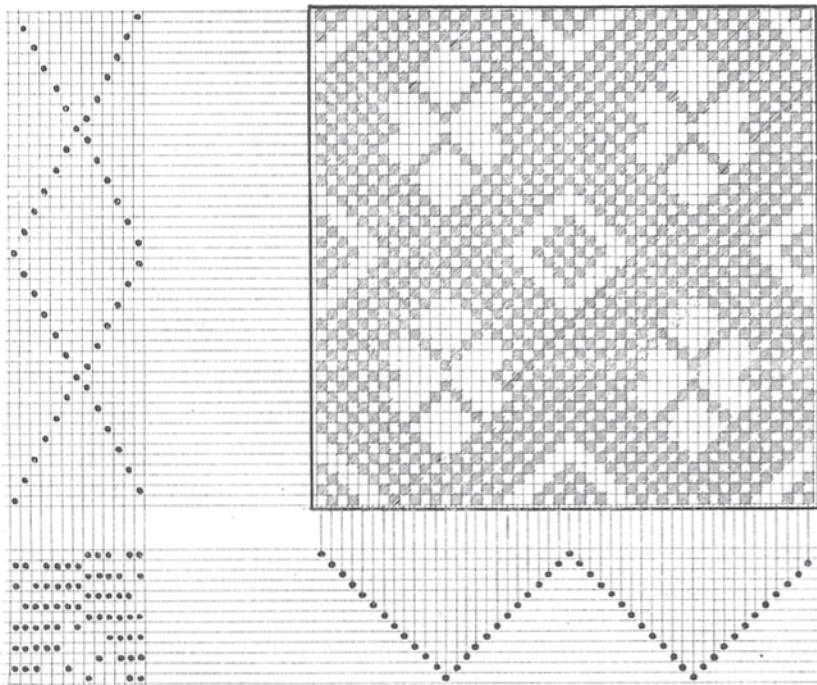


Taf. 13.

*M. 524.*



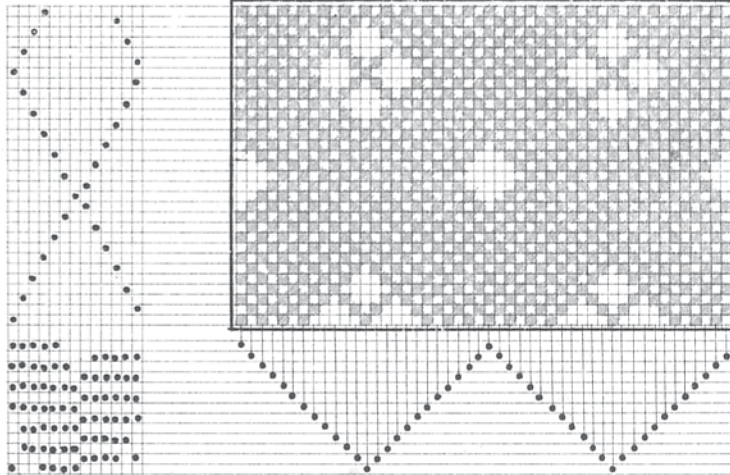
*M. 525.*



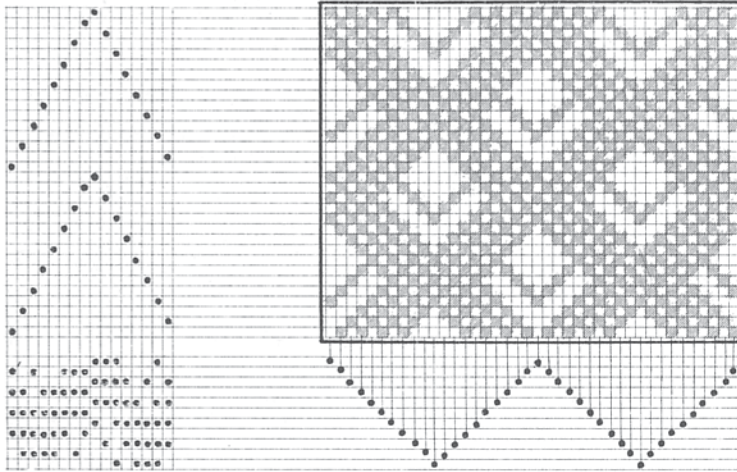


Taf. 76.

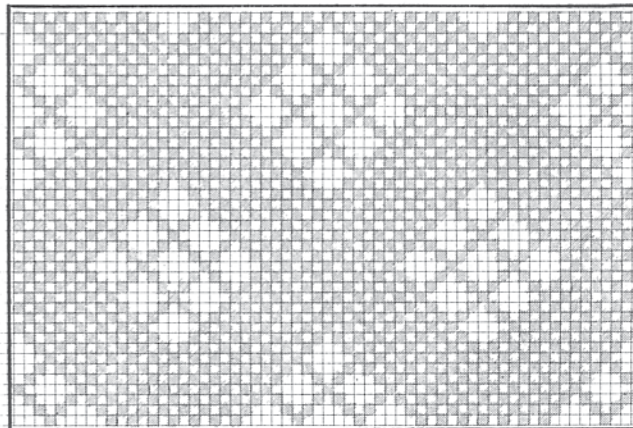
M. 526.



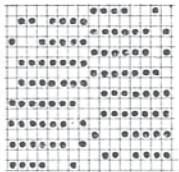
M. 527.



M. 528.



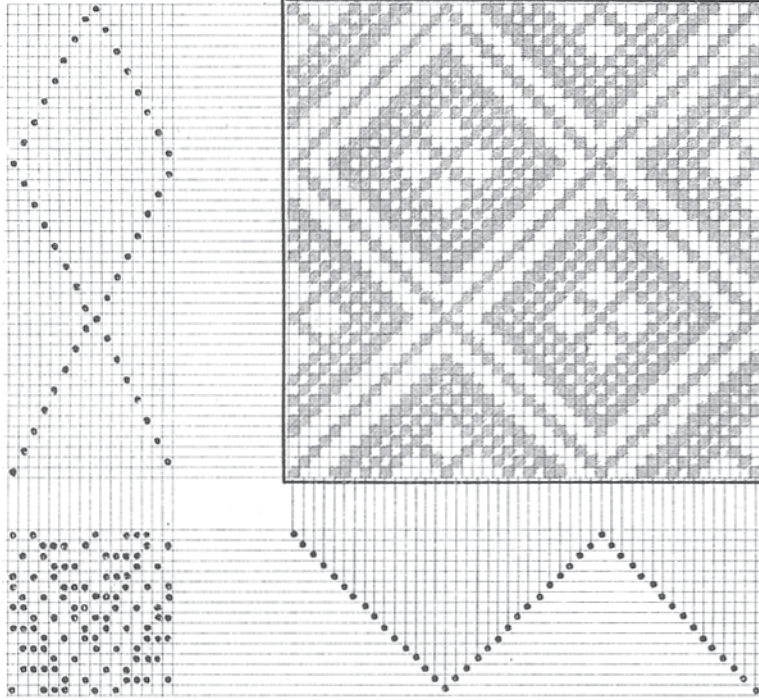
*Schnürring*



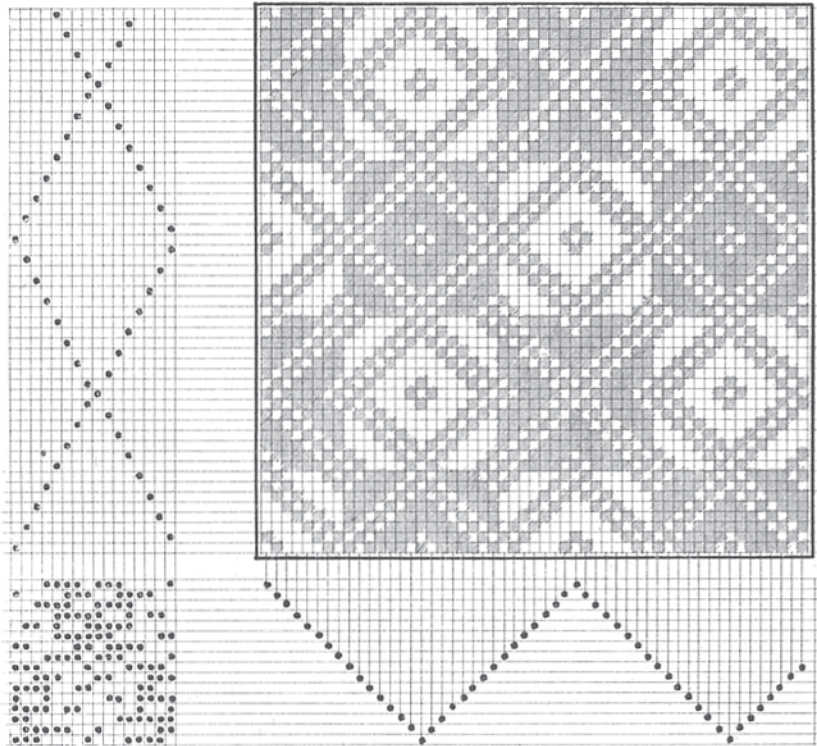
1822/23/24/25/26/27/28/29/30/31/32/33/34/35/36/37/38/39/40/41/42/43/44/45/46/47/48/49/50/51/52/53/54/55/56/57/58/59/60/61/62/63/64/65/66/67/68/69/70/71/72/73/74/75/76/77/78/79/80/81/82/83/84/85/86/87/88/89/90/91/92/93/94/95/96/97/98/99/100

Taf. 77.

*M. 529.*



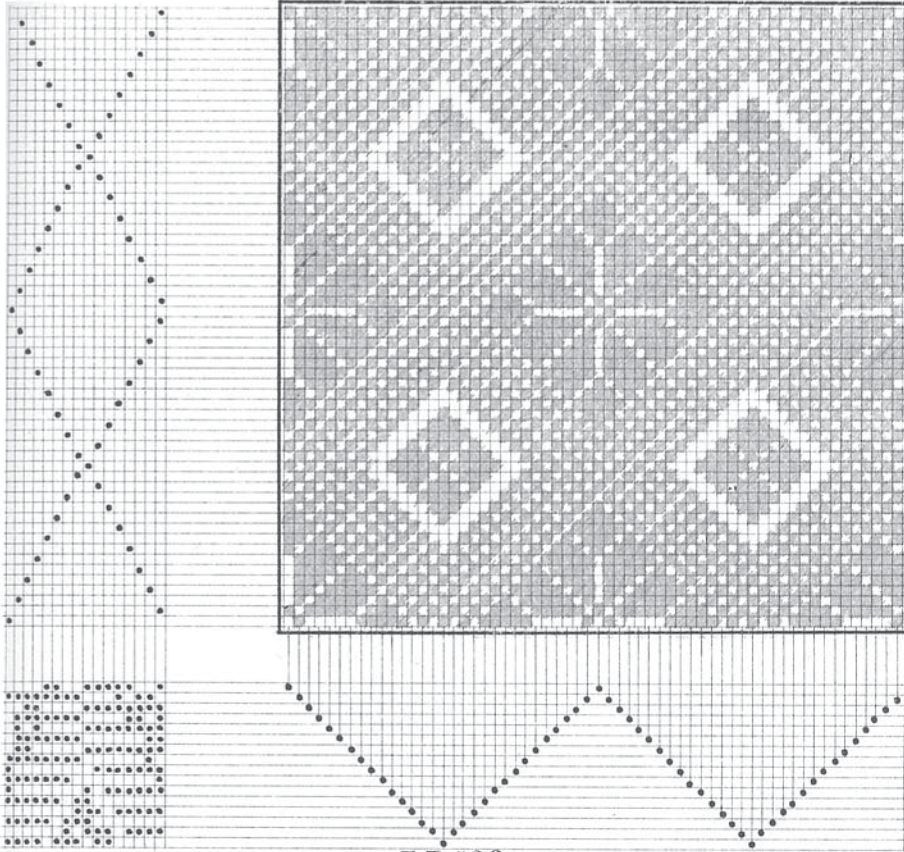
*M. 530.*



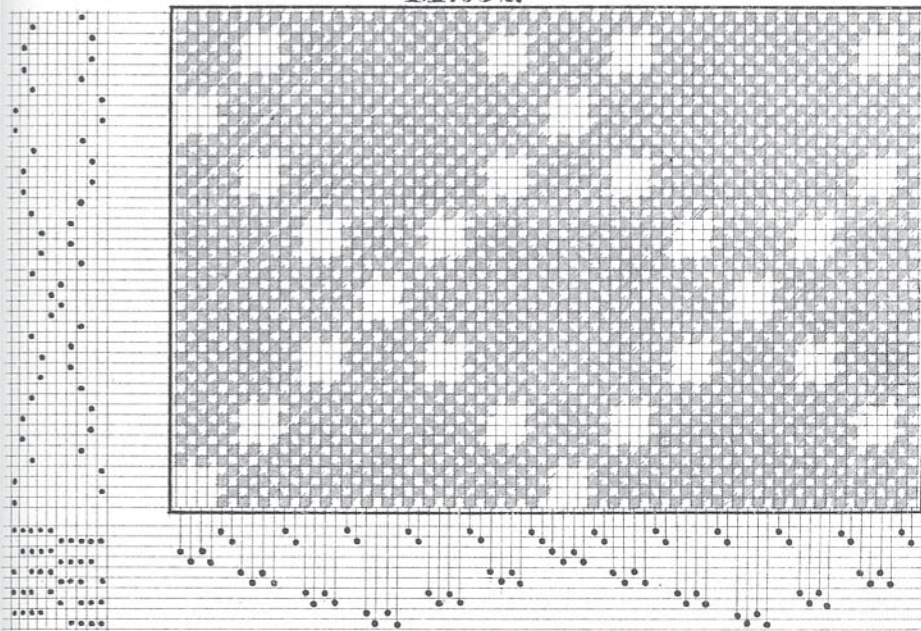


Taf.78.

*M.531.*



*M.532.*

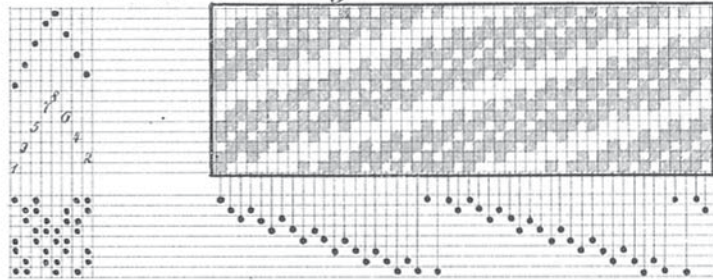




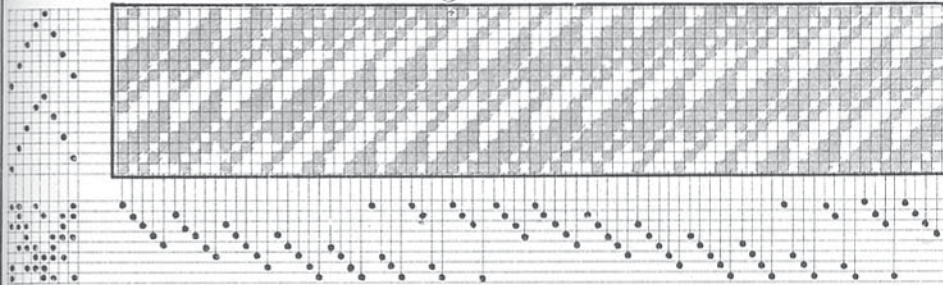


# Taf. 80.

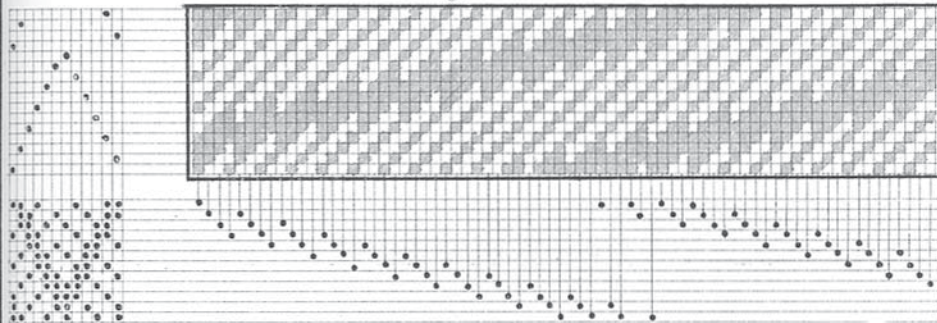
## Musterbilder für rabattierende Einzüge. *M. 536. 8 bindig. 3 u. 3 rabattirt.*



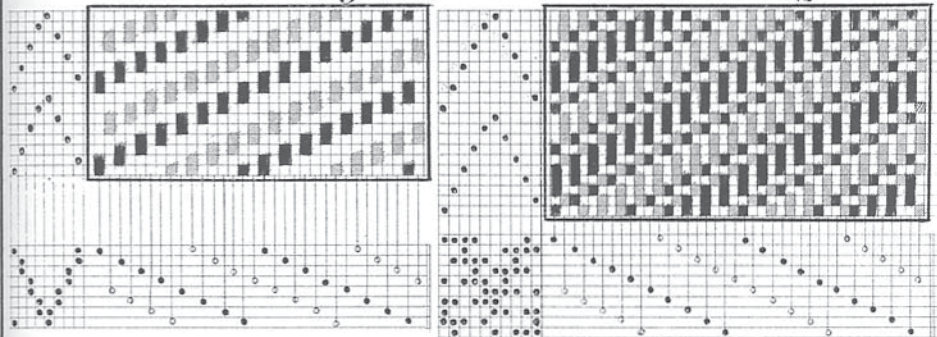
*M. 537. 8 bindig. 5 u. 5 rabattirt.*



*M. 538. 12 bindig. 4 u. 4 rabattirt.*



## Musterbilder für doppelte Einzüge Für Durch- *M. 539. 8 bindig. M. 540. 10 bindig.*



*M. 541. 12 bindig.*

b. für Spitz.

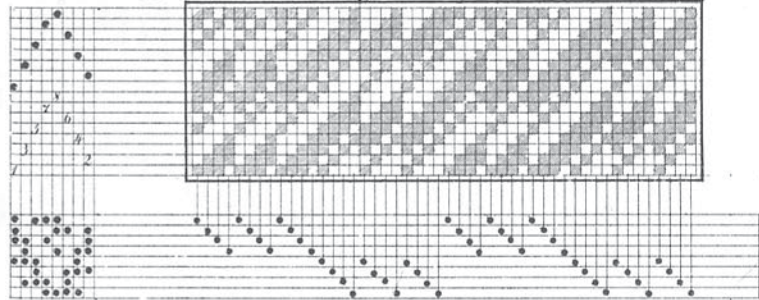
*M. 542. 8 bindig.*

c. für Rabattirend.

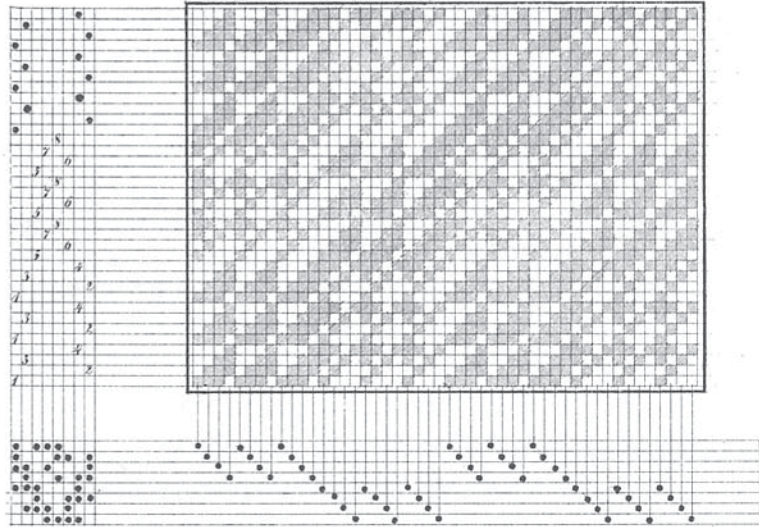
*M. 543. 12 bindig. 3 u. 3.*



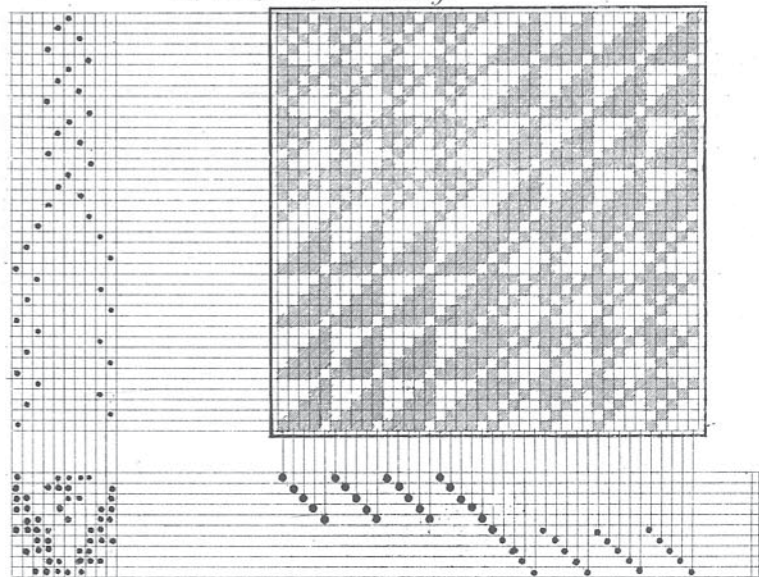
Musterbilder für eine Art theiliger Einzüge  
*M. 544. 8 bindig*



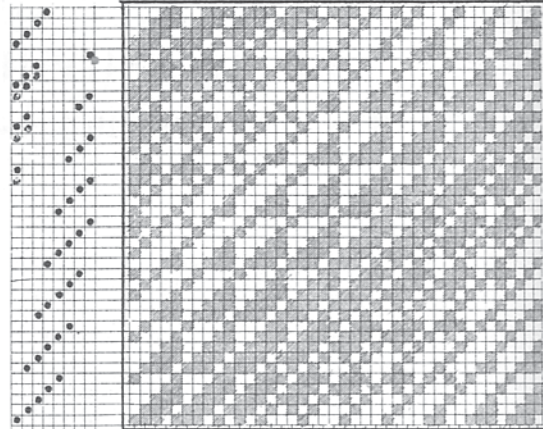
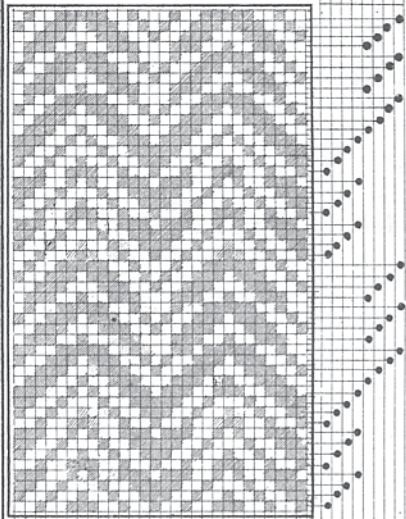
Tretweise wie Reihung.  
*M. 545. 8 bindig*



*M. 546. 10 bindig*

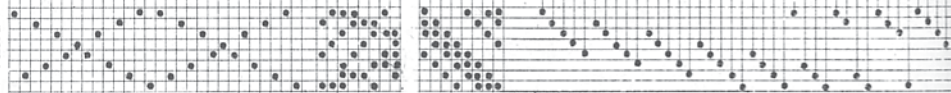


M.  
547.



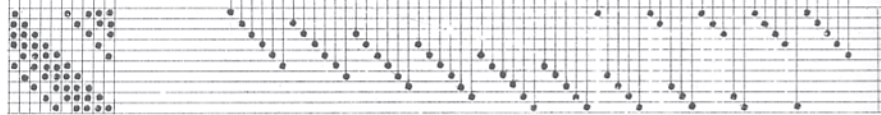
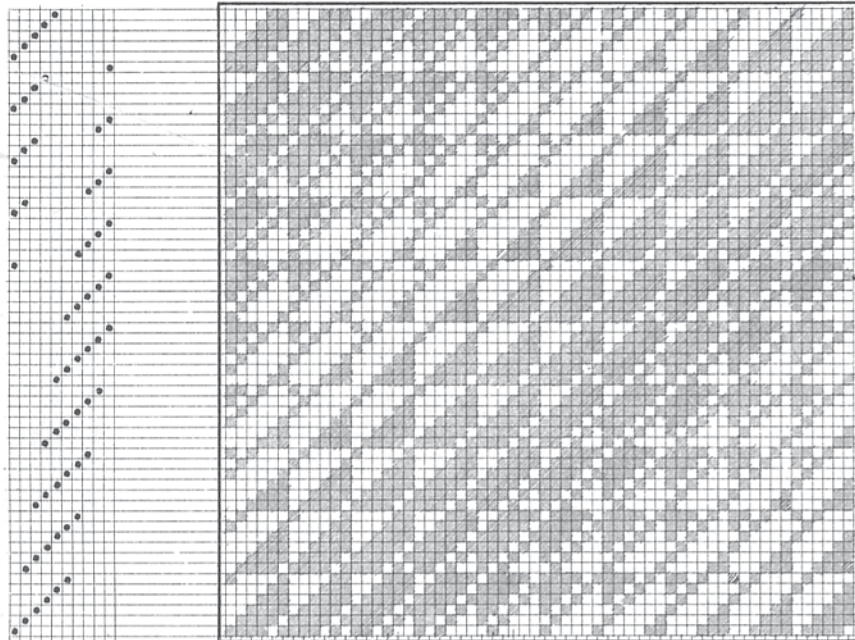
Musterbilder für rabattirende  
Reih- und Tretweise

M.548. 8bindig 5 und 5.



Spitzstichweise

M.549. 10bindig. 6 und 6 rabattirt

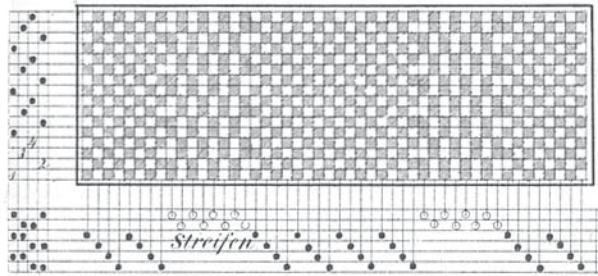




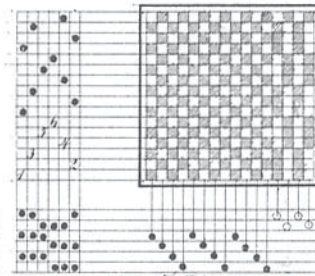
# Die zusammengestellten Bindungen

## A. Langgestreifte Stoffe I. Leinwandgrund mit Cannalèstreifen

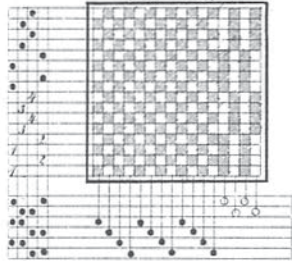
M. 550



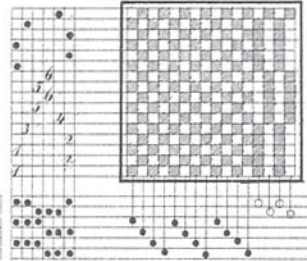
M. 551



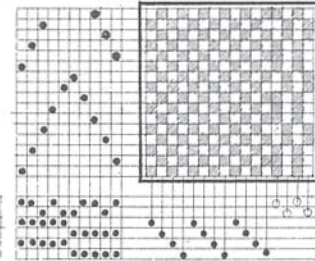
M. 552



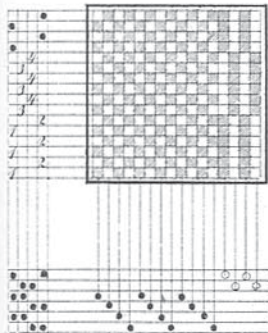
M. 553



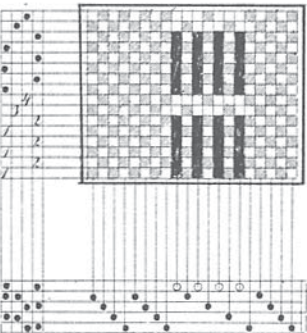
M. 554



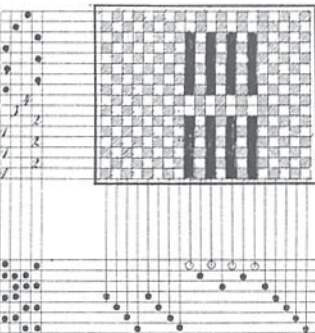
M. 555



M. 556

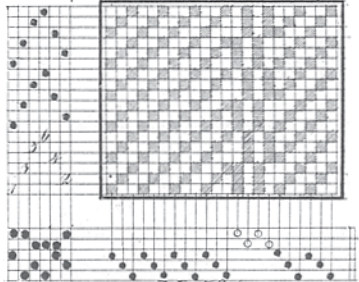


M. 557

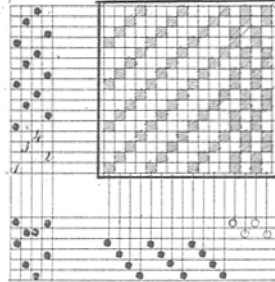


II. Köper-, Atlas- und gemischte Bindungen mit Cannalèstreifen.

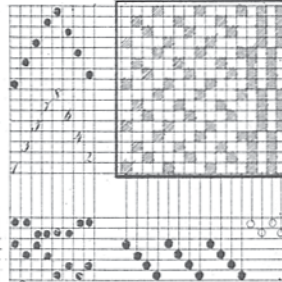
M. 558  
Grund: 3 bind. Köp.



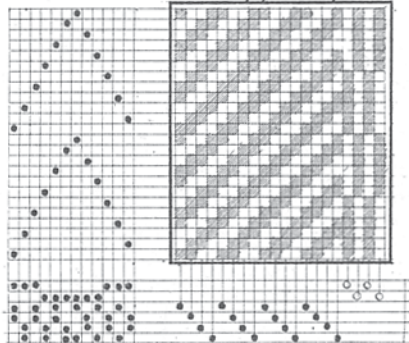
M. 559  
Grund: 4 bind. Köp.



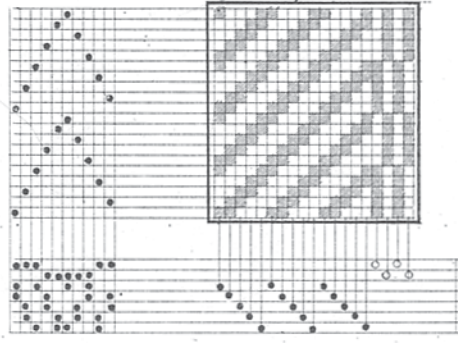
M. 560  
Grund: 4 bind. Atlas.



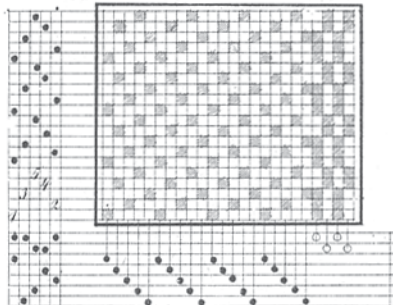
M. 561  
Grund: 4 bind. Doppelköp.



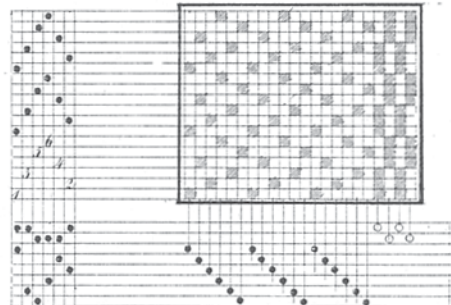
M. 562  
Grund: 5 bindiger Köper.



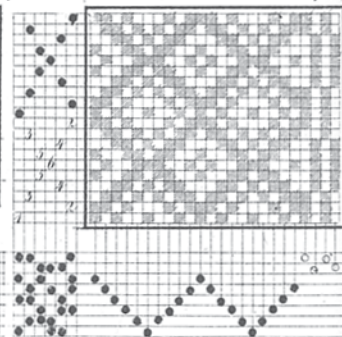
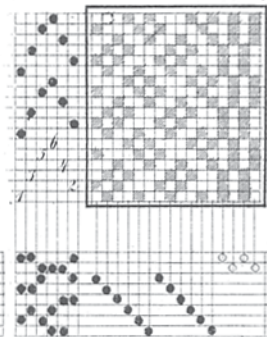
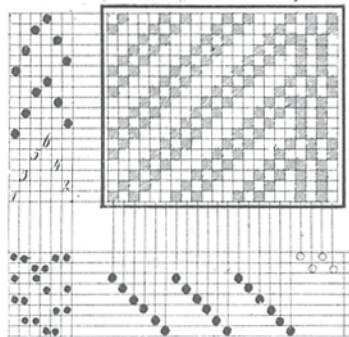
M. 563 Grund: 5 bind. Atlas



M. 564 Grund: 6 bind. Atlas

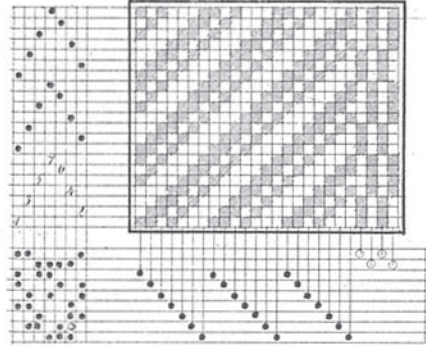


M. 565 Grund: 6 bind. Köp. M. 566 Grund: 6 bind. Dopp. M. 567 Grund: 7 bind. Köp. Spitze

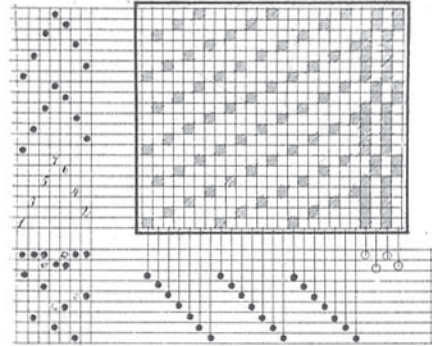




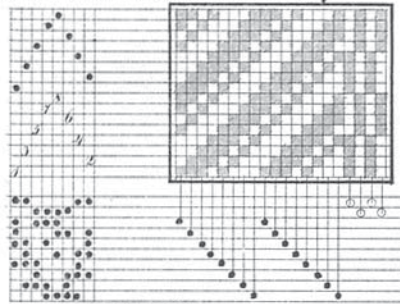
*M. 568. Grund: 7 bind. Köp.*



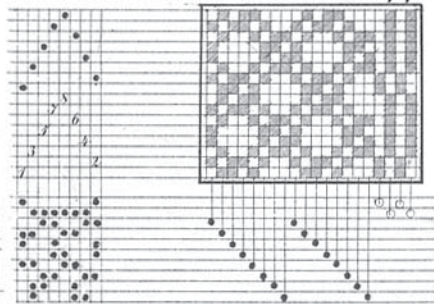
*M. 569. Grund: 7 bind. Atlas.*



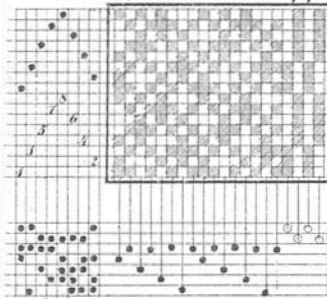
*M. 570. Grund: 8 bind. Köp.*



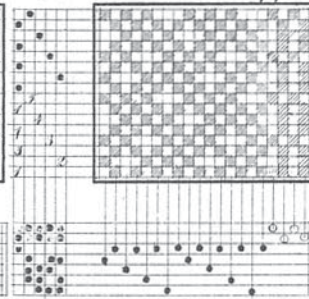
*M. 571. Grund: 8 bind. Krepp.*



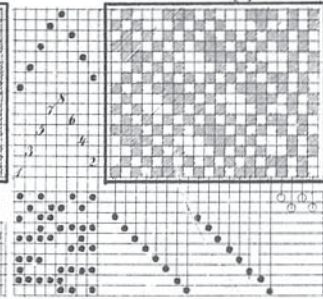
*M. 572  
Grund: 8 bind. Krepp.*



*M. 573  
Grund: 8 bind. Krepp.*

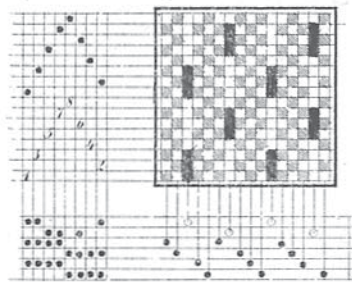


*M. 574  
Grund: 8 bind. Krepp.*

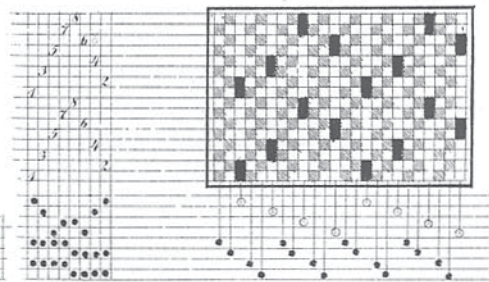


III. Leinwand- und Atlasgrund mit einzelnen Pomedel oder Figurfäden.

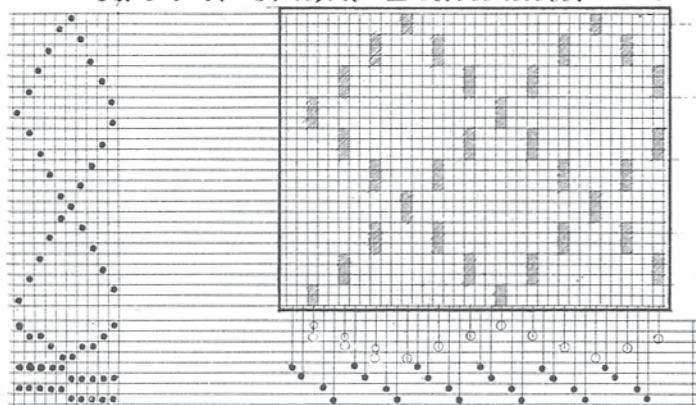
*M. 575. Grund: Leinwand.*



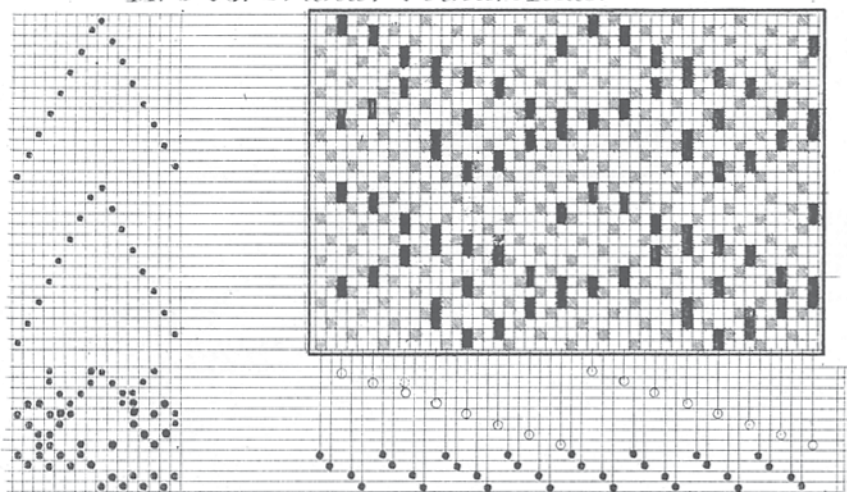
*M. 576. Grund: Leinwand.*



*M. 577. Grund: Leinwand.*

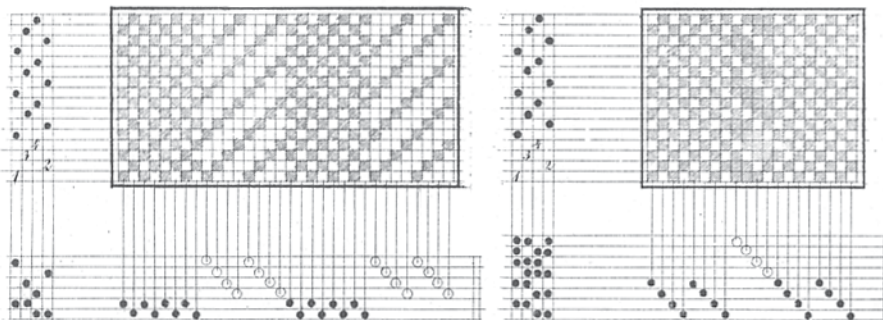


*M. 578. Grund: 4 bind. Atlas.*



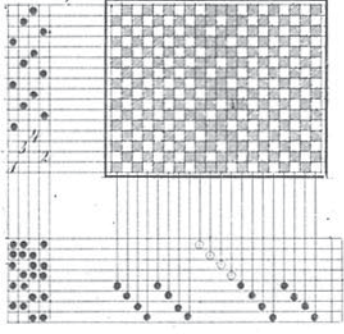
IV. Leinwandgrund mit Körper- oder Atlasstreifen.

*M. 579. Streifen: 4 bind. Köp. M. 580. Streifen: 4 bind. Köp.*

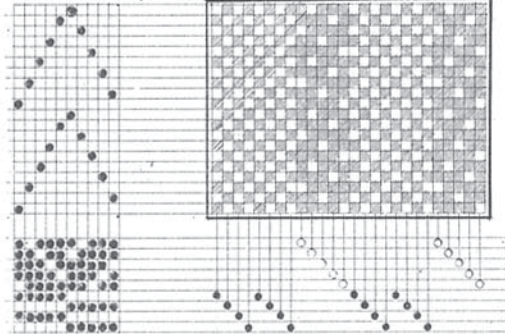




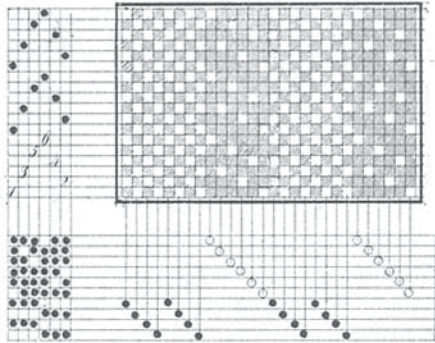
*M. 581*  
*Streifen: 4 bind. Atlas.*



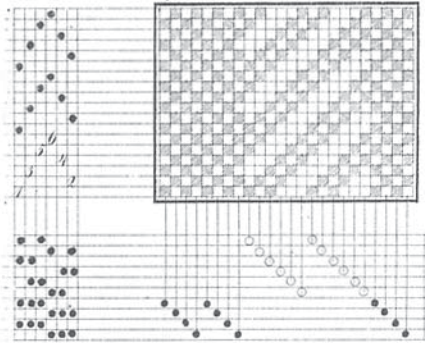
*M. 582*  
*Streifen: 5 bind. Atlas.*



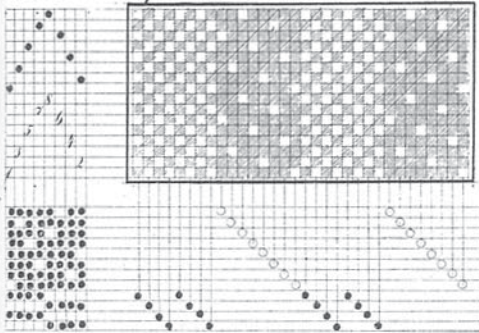
*M. 583. Streifen: 6 bind. Atlas.*



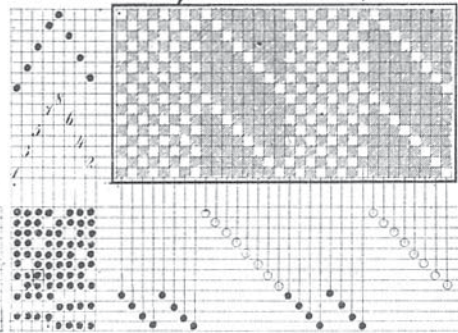
*M. 584. Streifen: 6 bind. fein Körper.*



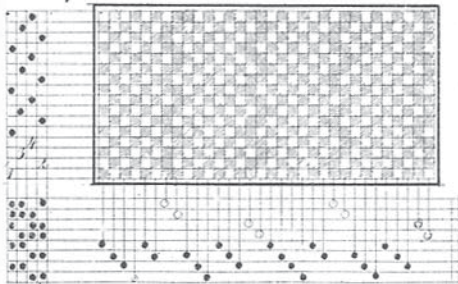
*M. 585. Streifen: 8 bindiger Atlas.*



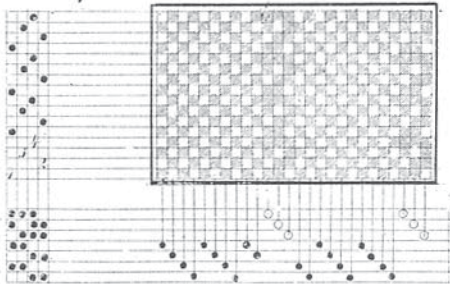
*M. 586. Streifen: 8 bind. Körper.*



*M. 587*  
*Streifen: 2 Faden 4 bind. Atlas.*

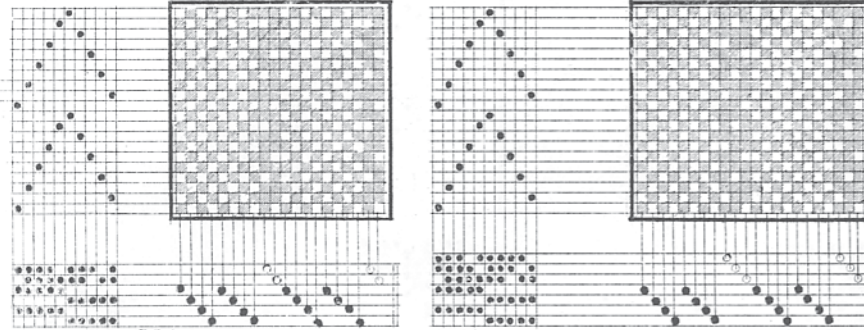


*M. 588*  
*Streifen: 3 Faden 4 bind. Atlas.*

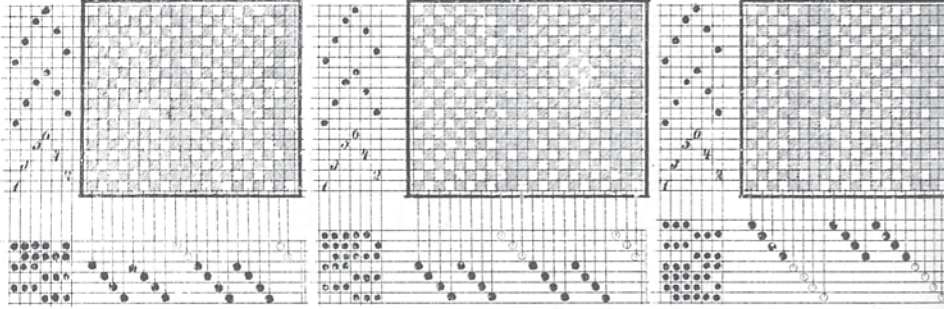


# Taf. 89.

*M. 589.*      *M. 590.*  
*Streifen: 2 Faden 5 bind. Atlas.*      *Streifen: 3 Faden 5 bind. Atlas.*

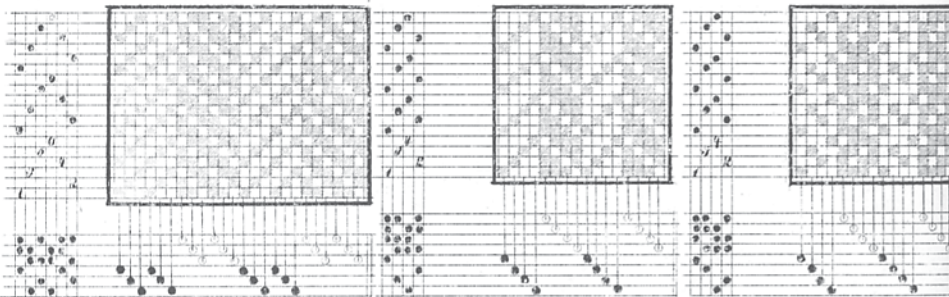


*M. 591.*      *M. 592.*      *M. 593.*  
*Streifen: 2 Faden 6 bind. Atlas.*      *Streifen: 3 Faden 6 bind. Atlas.*      *Streifen: 4 Faden 6 bind. Atlas.*

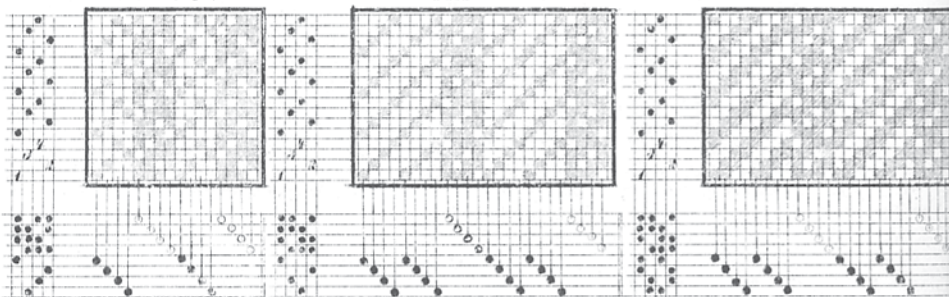


## Körper, = Atlas- und gemischter Grund mit Körper oder Atlasstreifen.

*M. 594.*      *M. 595.*      *M. 596.*



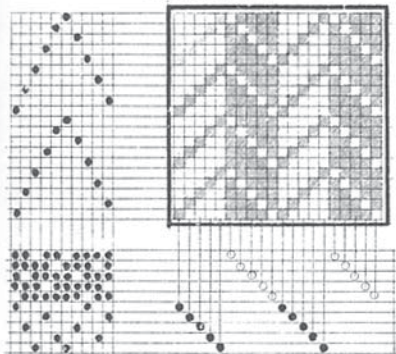
*M. 597.*      *M. 598.*      *M. 599.*



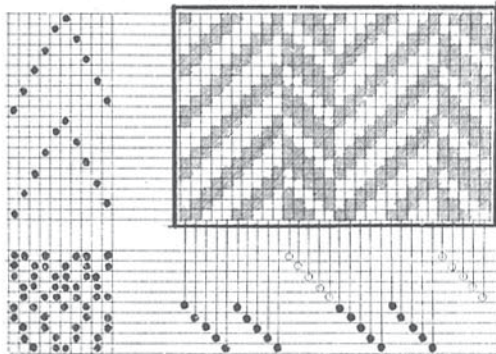


# Taf.90.

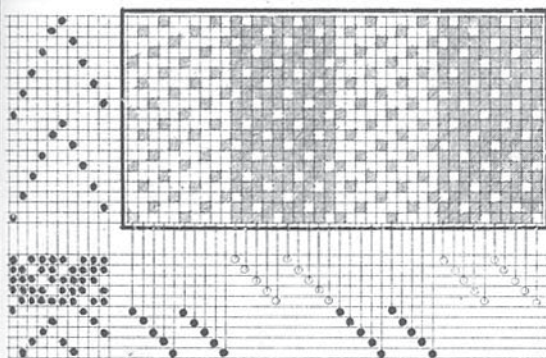
M.600.



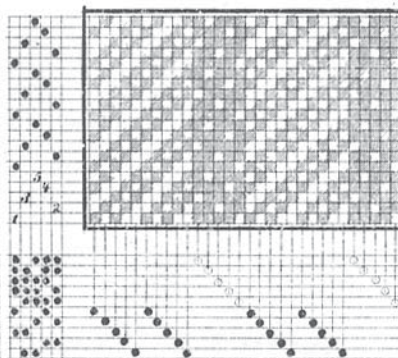
M.601.



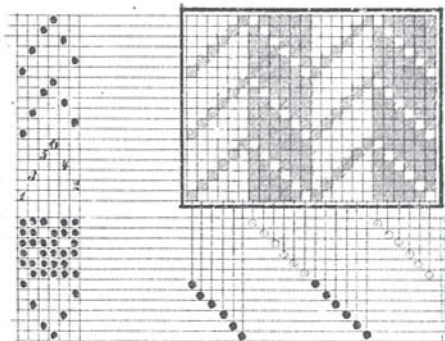
M.602.



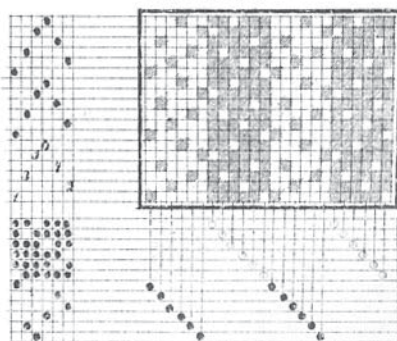
M.603.



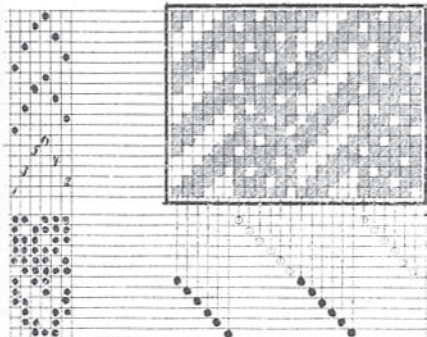
M.604.



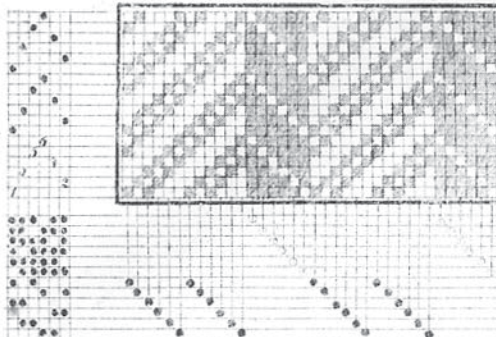
M.605.



M.606.



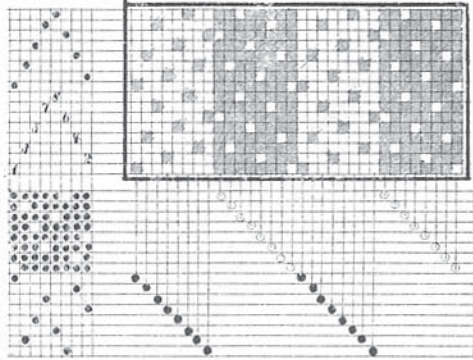
M.607.



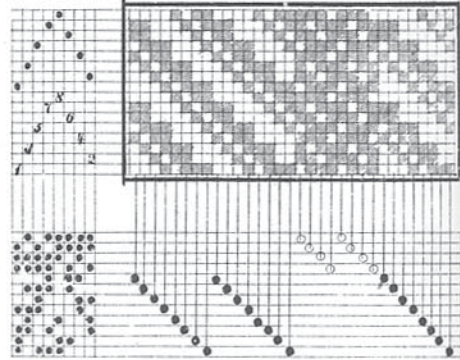


# Taf. 91.

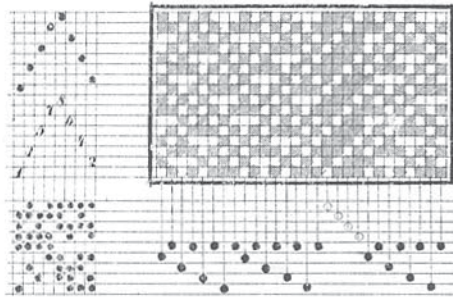
*M. 608.*



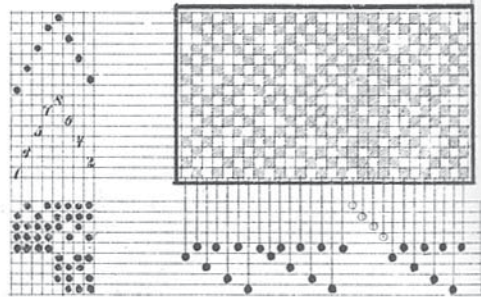
*M. 609.*



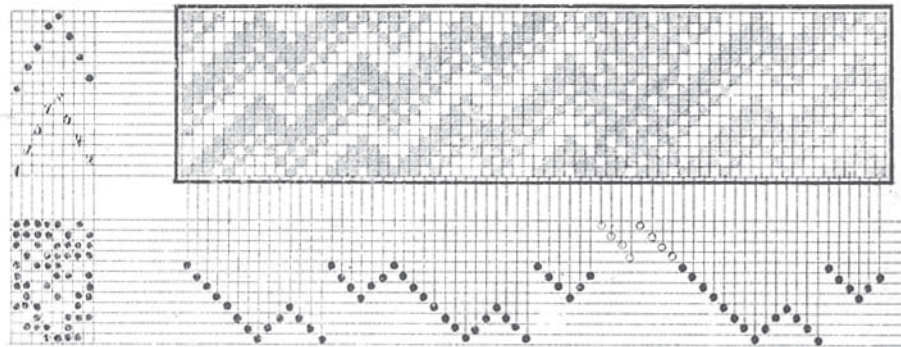
*M. 610.*



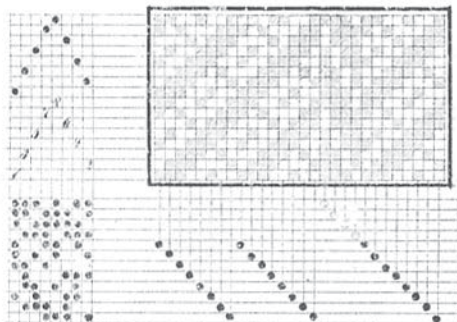
*M. 611.*



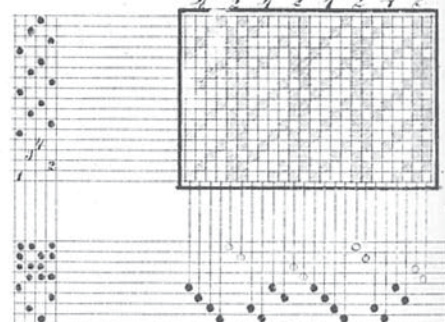
*M. 612.*



*M. 613.*



*M. 614.*





# Taf. 92.

*M. 615.*  
10 4 2.2. 10. 4. 2.2.

*M. 616.*  
4. 4. 4. 4.

*M. 617.*  
6. 2. 6. 2. 6. 2. 6. 2.

*M. 618.*  
30. 6. 10. 3. 10. 9.

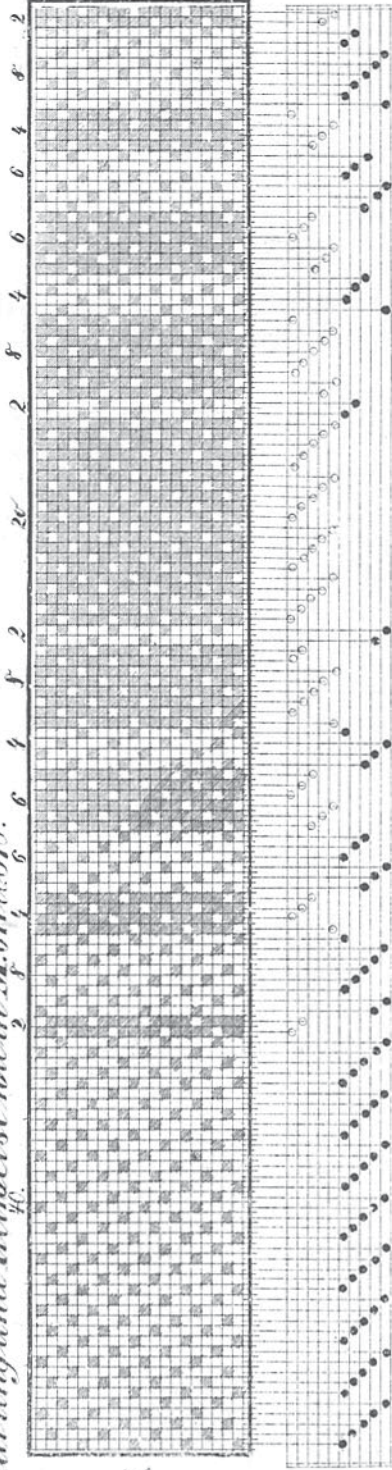
*M. 619.*  
10. 4. 10. 4.

*M. 620.*  
28. 2. 4. 8. 4. 2.

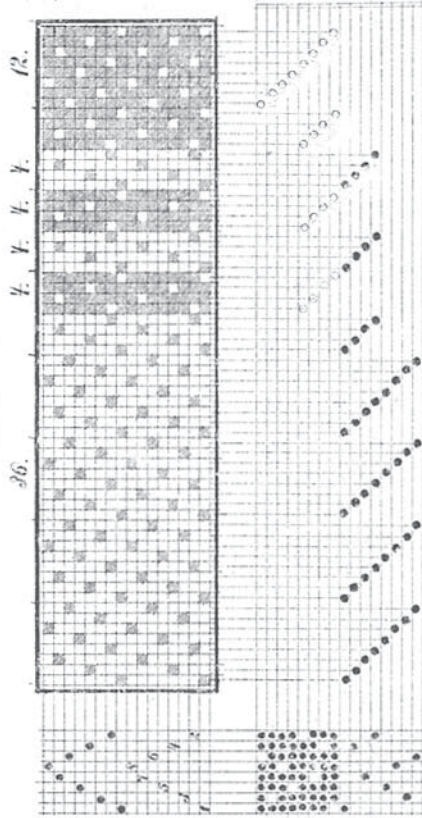


*Schnürung und Tretpfeise wie in M. 617 u. 618.*

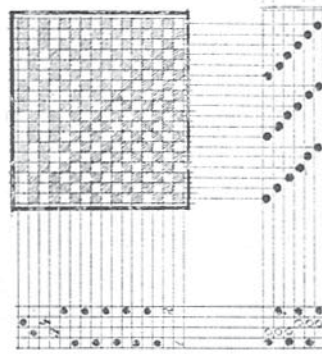
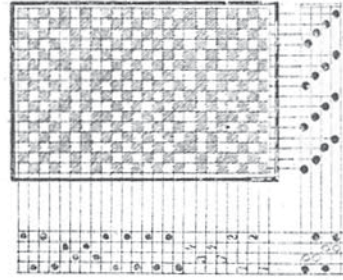
M. 621.



M. 622.



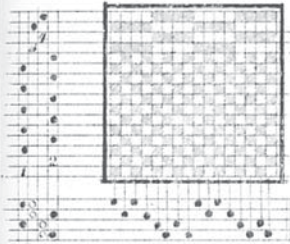
**b. Quergestreifte Stoffe.**  
*Heinwand mit Canalestreifenchen.*  
 M. 623.



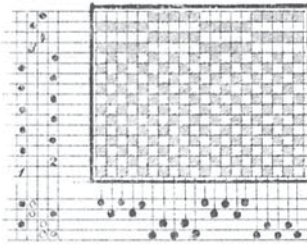


# Taf. 94.

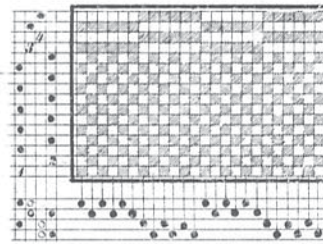
M. 625.



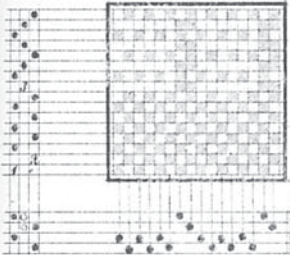
M. 626.



M. 627.

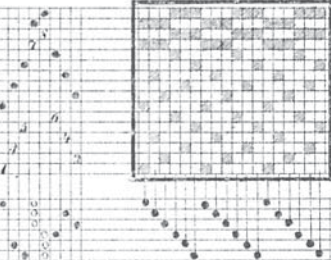


M. 628.



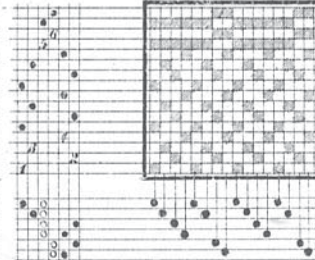
2. Atlas- und gemischter Grund mit  
Cannaléstreifen.

M. 629.  
Grund 6 bind. Atlas.



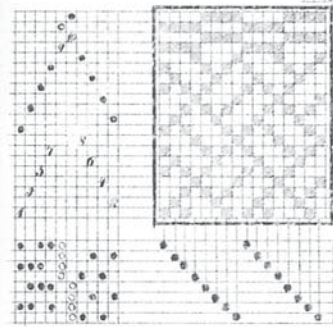
M. 630.

Grund 4 bind. Atlas.



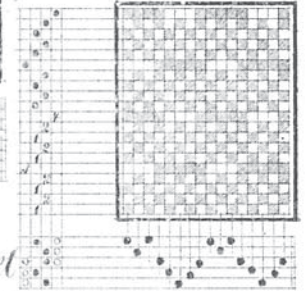
M. 631.

Grund 8 bind.

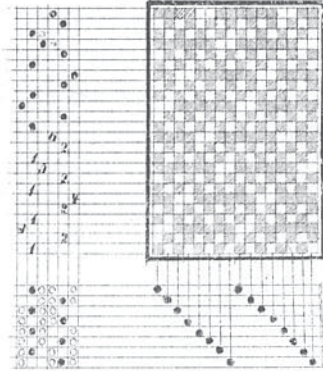


3. Leinwandgrund mit einzelnen  
Pomedel oder Figurschüssen.

M. 632.

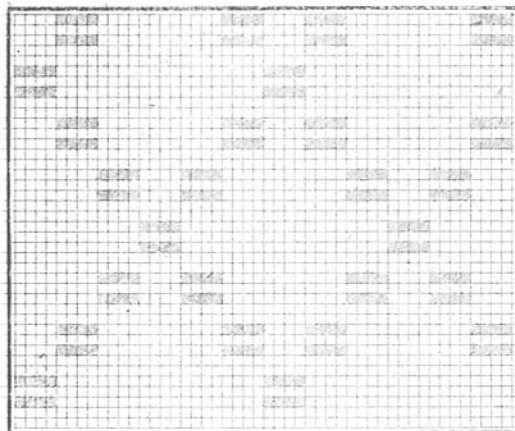


M. 633.

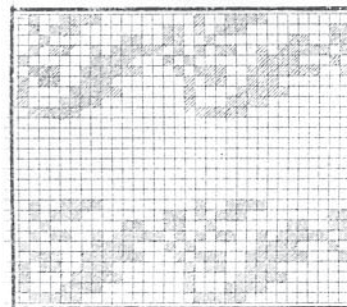


M. 634.

Schussfaden gezeichnet



M. 635.

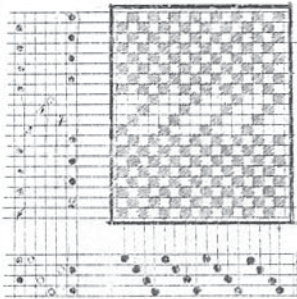




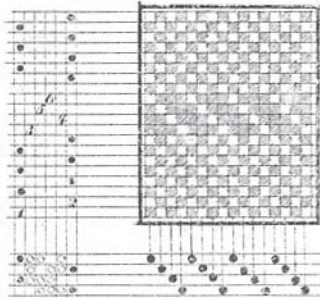
# Taf. 95.

## 4/ Leinwandgrund mit Köper oder Atlasstreifen.

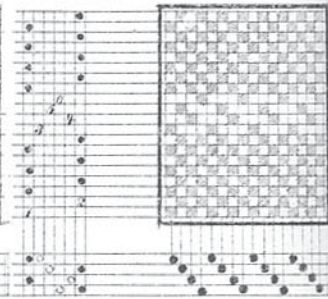
M. 636.



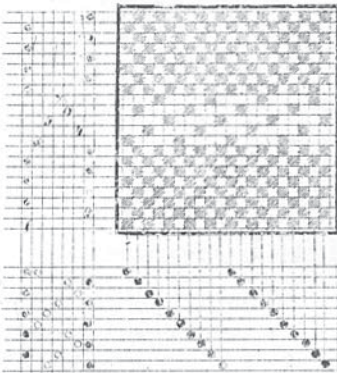
M. 637.



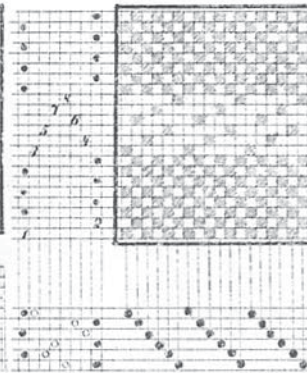
M. 638.



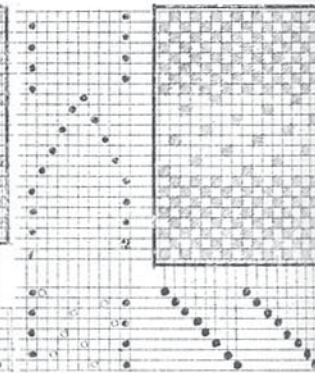
M. 639.



M. 640.

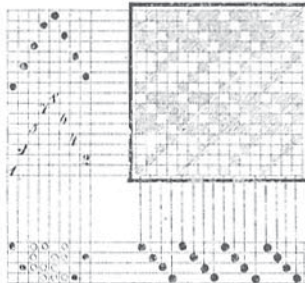


M. 641.

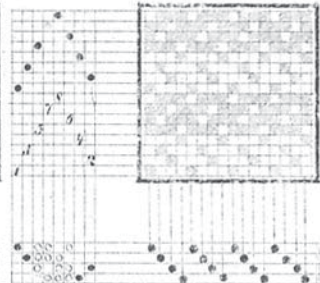


## 5/ Köper-Atlas- und gemischter Grund mit Köper oder Atlasstreifen.

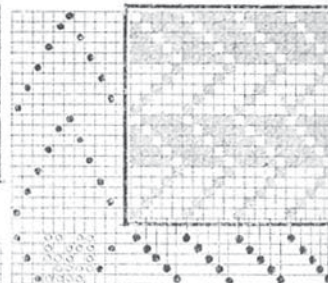
M. 642.



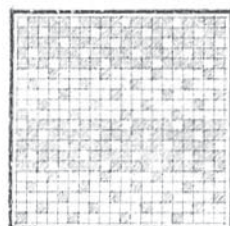
M. 643.



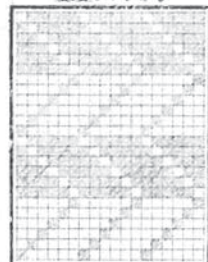
M. 644.



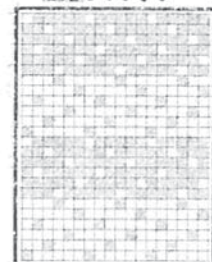
M. 645.



M. 646.



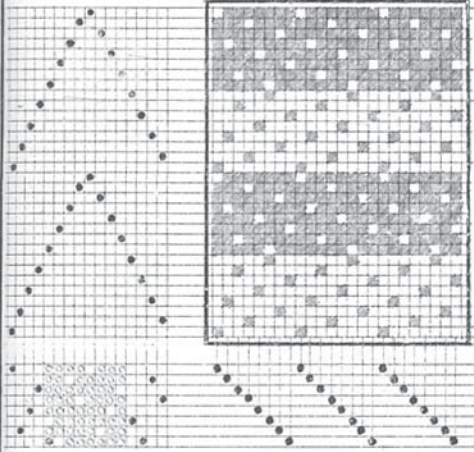
M. 647.



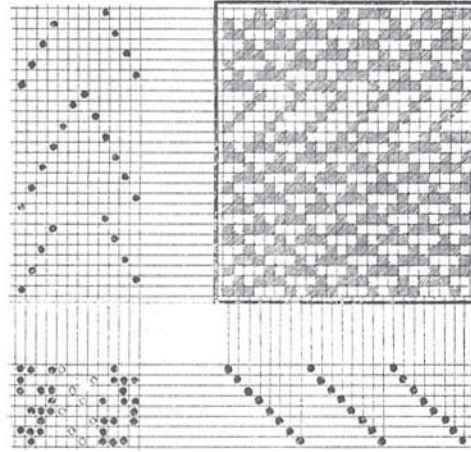


# Taf. 96.

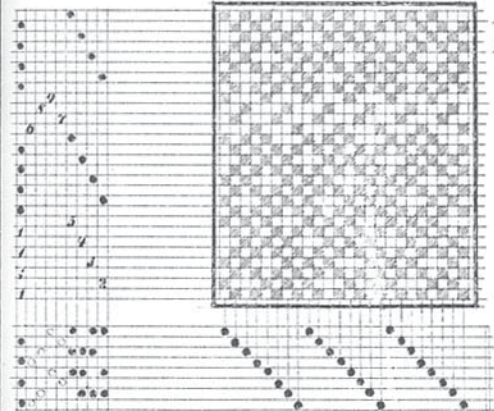
*M. 648.*



*M. 649.*

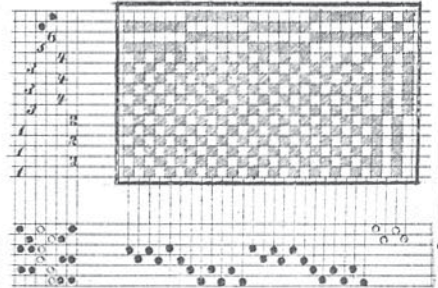


*M. 650.*

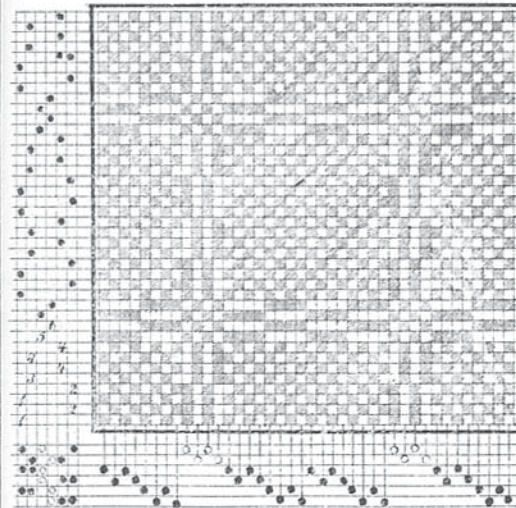


**C. Karrirte Stoffe**  
**Leinwand - Köper - Atlas - und**  
**gemischter Grund mit**  
**Cannalécarrirung.**

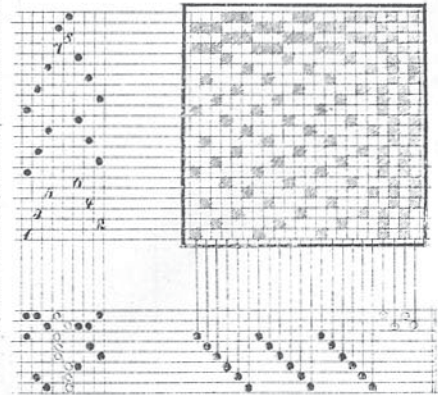
*M. 652.*



*M. 651.*

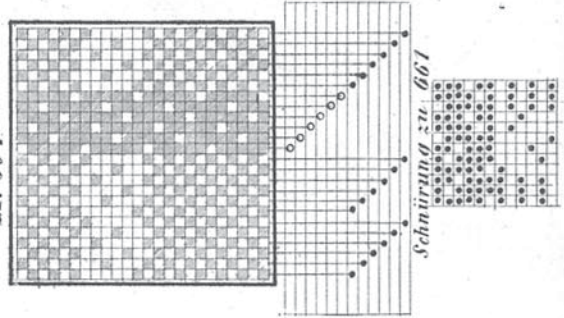
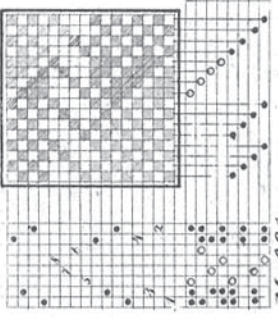
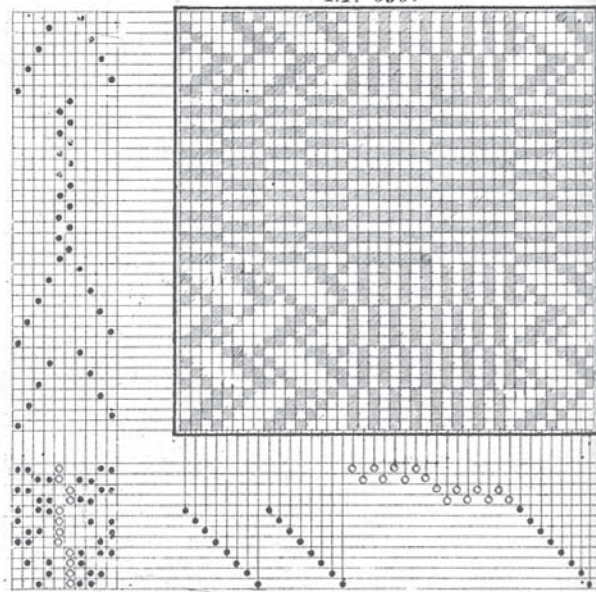
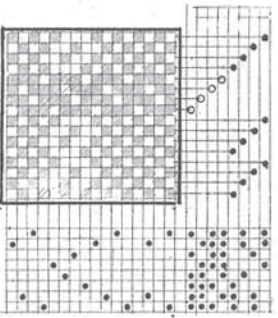
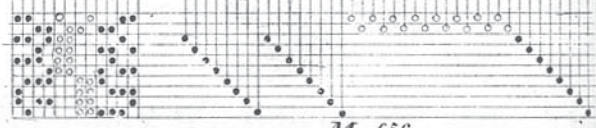
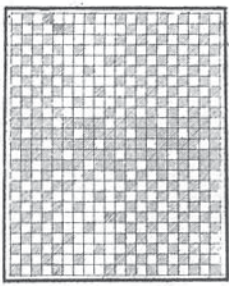
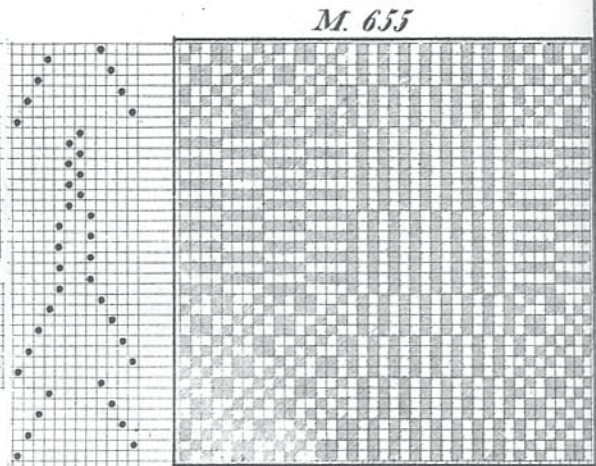
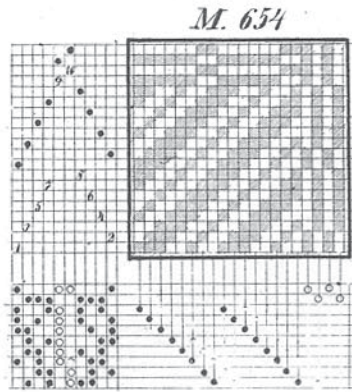


*M. 653.*





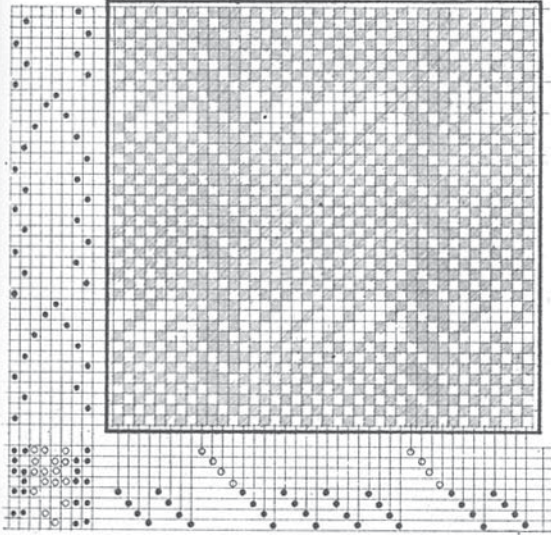
2. Leinwandgrund mit Körper = oder Atlascarrirung.



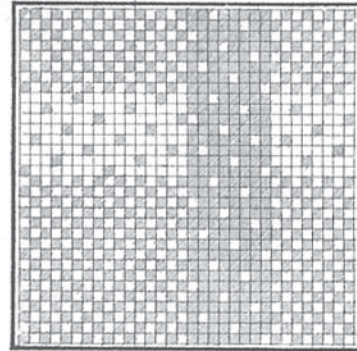


# Taf. 98

M. 657

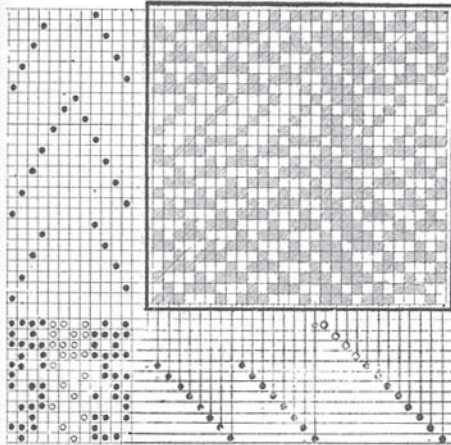


M. 662

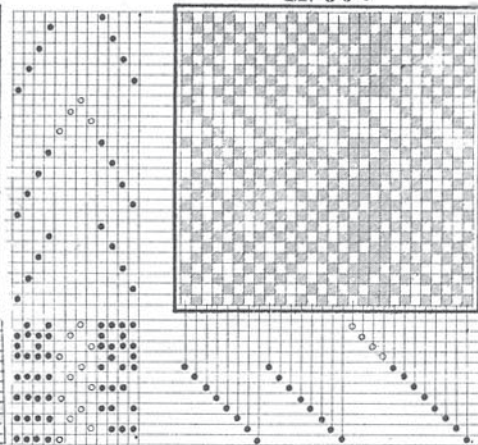


## 3. Gemischter Grund mit Körper-oder Atlascarrirung.

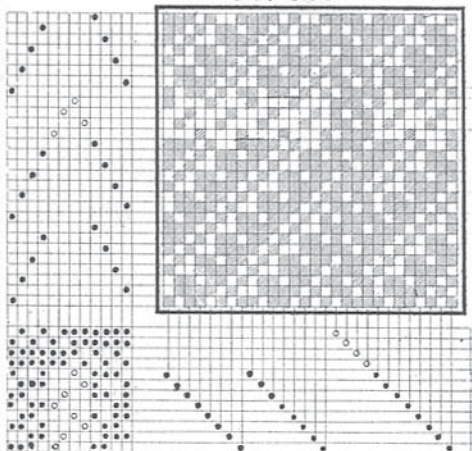
M. 663



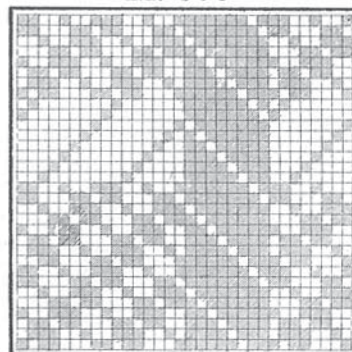
M. 664



M. 665



M. 666

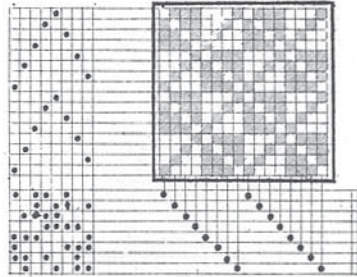




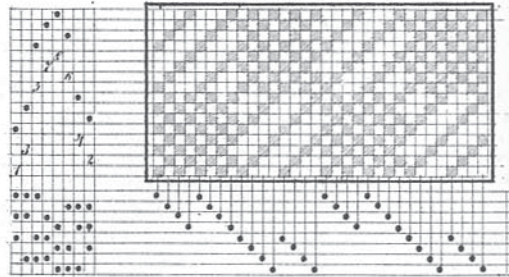
# Taf. 99

## d. Würfelige Stoffe.

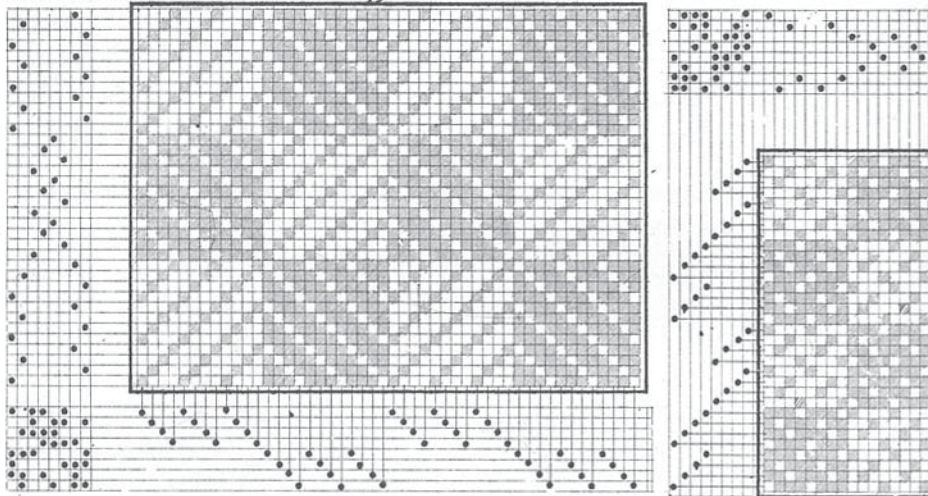
M. 667



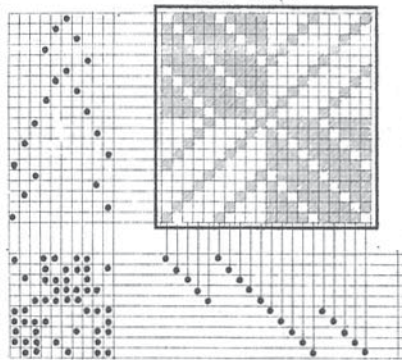
M. 668



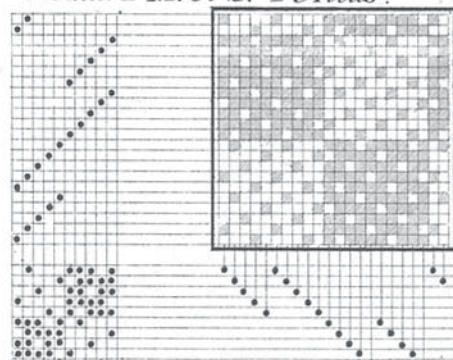
M. 669



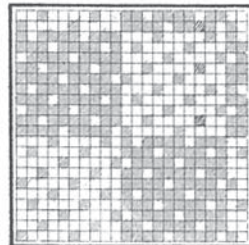
M. 671



5 bind. - M. 672. - Atlas.



"Falsche"  
5 bind.

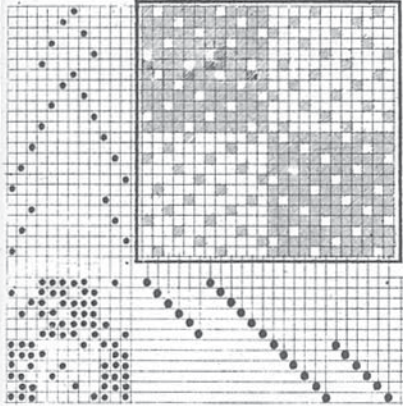


"Zeichnung"  
Atlas.

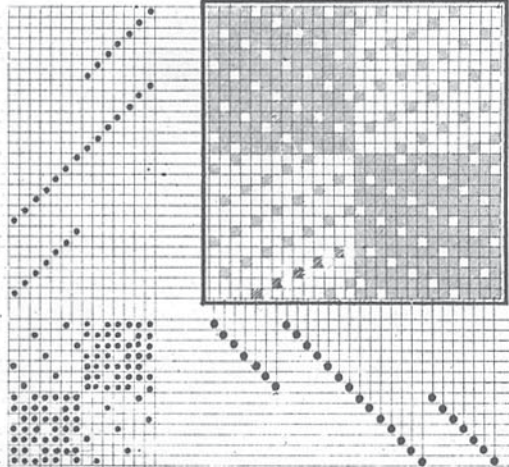


# Taf. 100

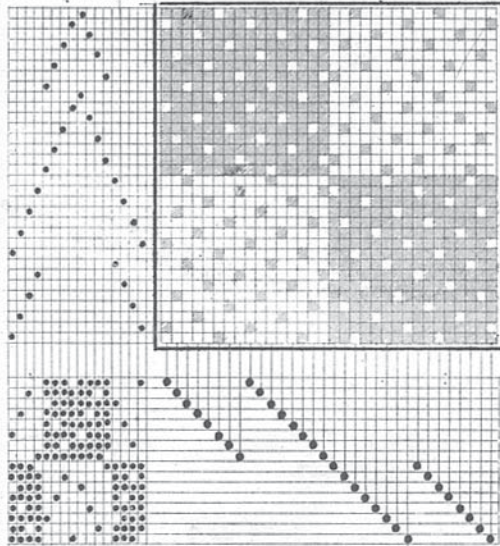
M. 673. 6 bind. Atlas



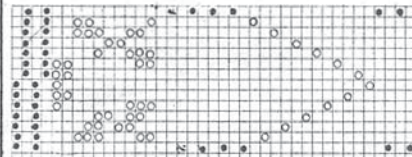
M. 674. 7 bind. Atlas



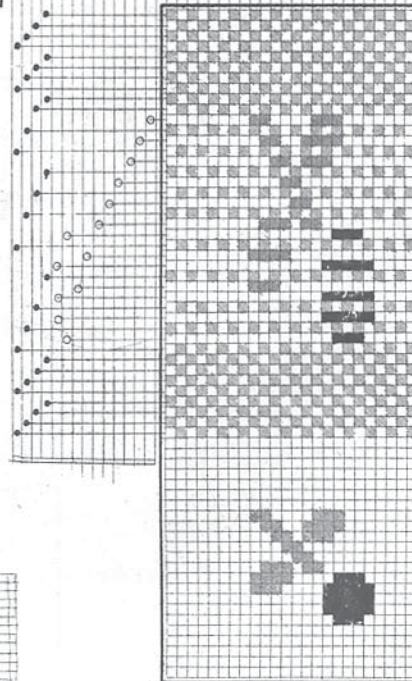
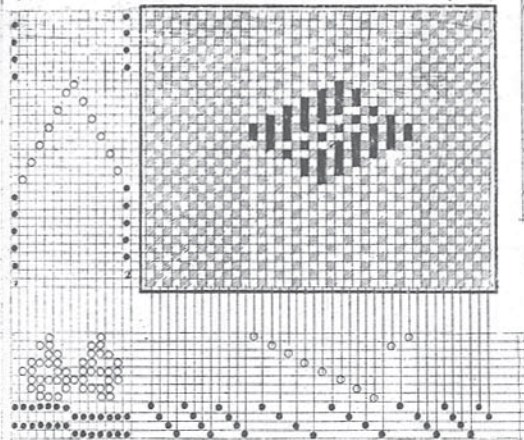
M. 675. 8 bind. Atlas



## L. Brochirte Stoffe 1. Kettenbrochirte



M. 676.



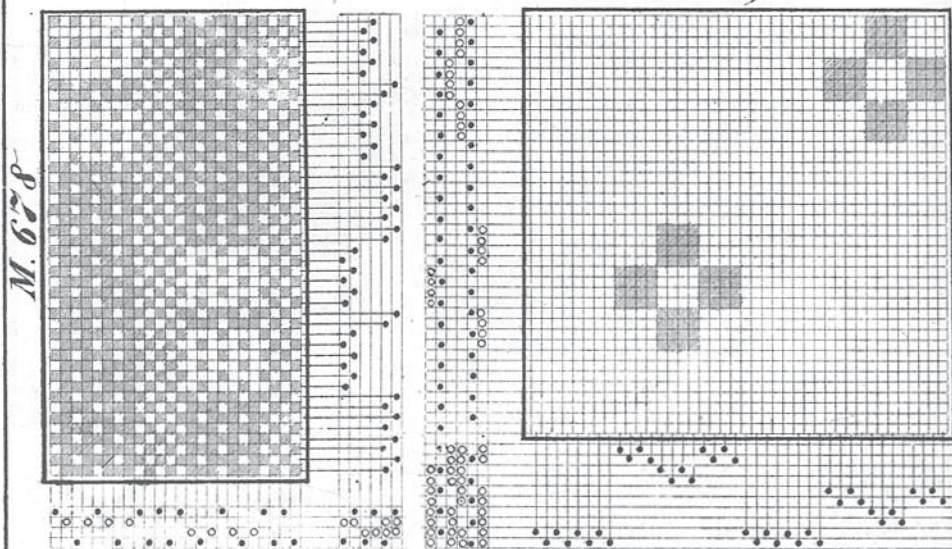
M. 677

Figur.

Taf. 101

2. Schussbrochirte.

M. 679



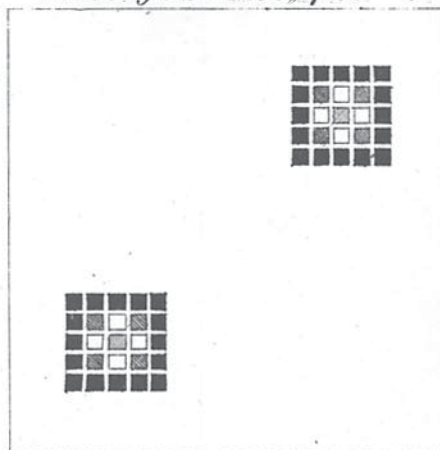
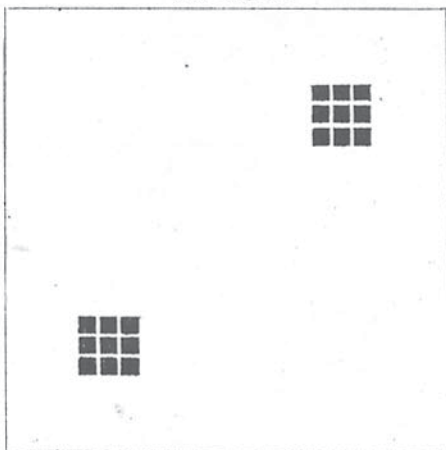
M. 678

M. 680

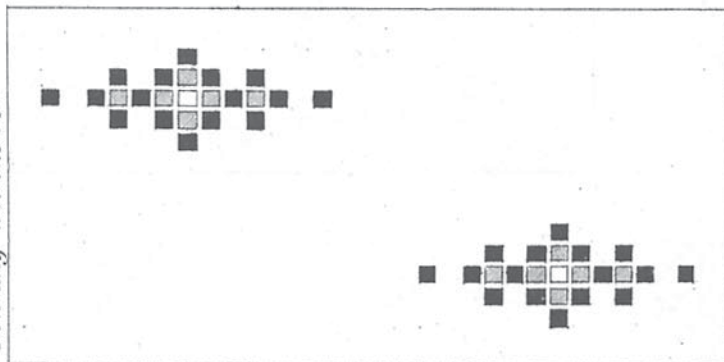
6 Schäfte u. 4 Schemeln Vorricht. wie 678.

M. 681

14 Schäfte u. 10 Schemeln. Broche 4 farb. Reihung der Theile, spitz



M. 682  
14 Schäfte u. 8 Schemeln  
Reihung wie zu 681



Zu den M. 679 bis 682  
"Leinwandgrundbindung"