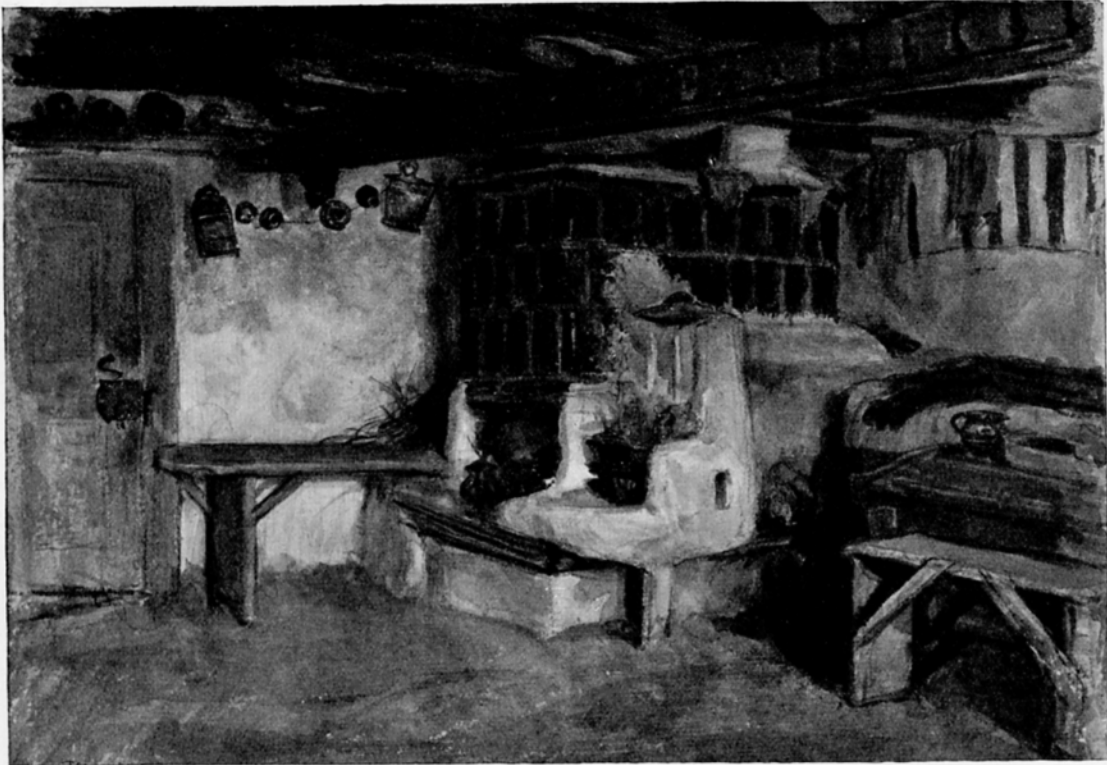


HUNGARY—TRANSYLVANIA



693 & 694 INTERIORS OF PEASANTS' HOUSES. FROM DRAWINGS BY E. ALADÁR JLLÉS

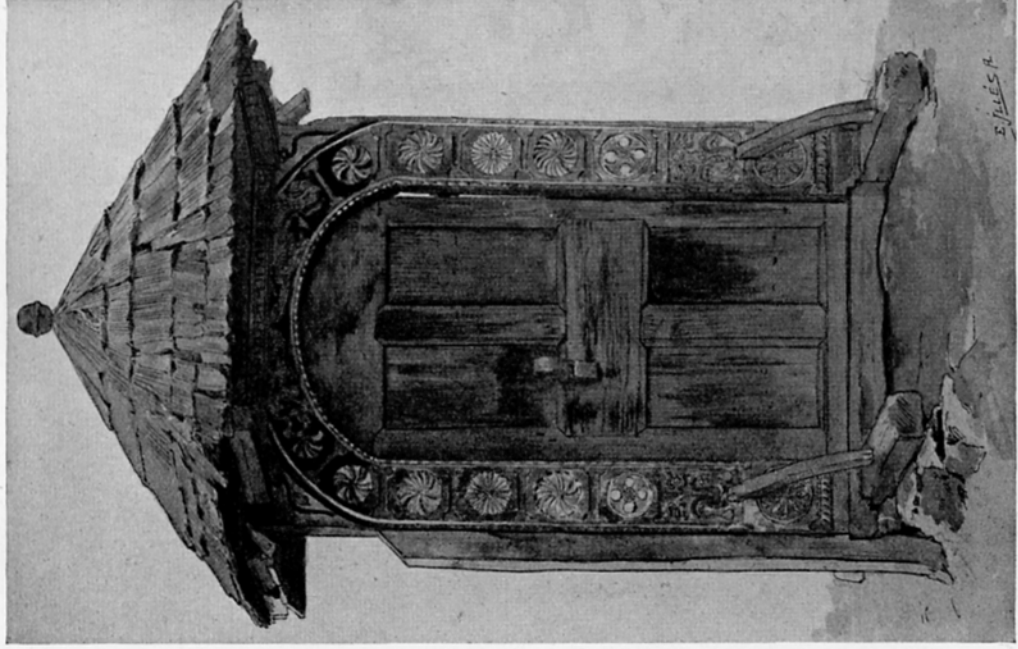


695 STREET IN A SZEKLER VILLAGE, COMITAT UDVARHELY



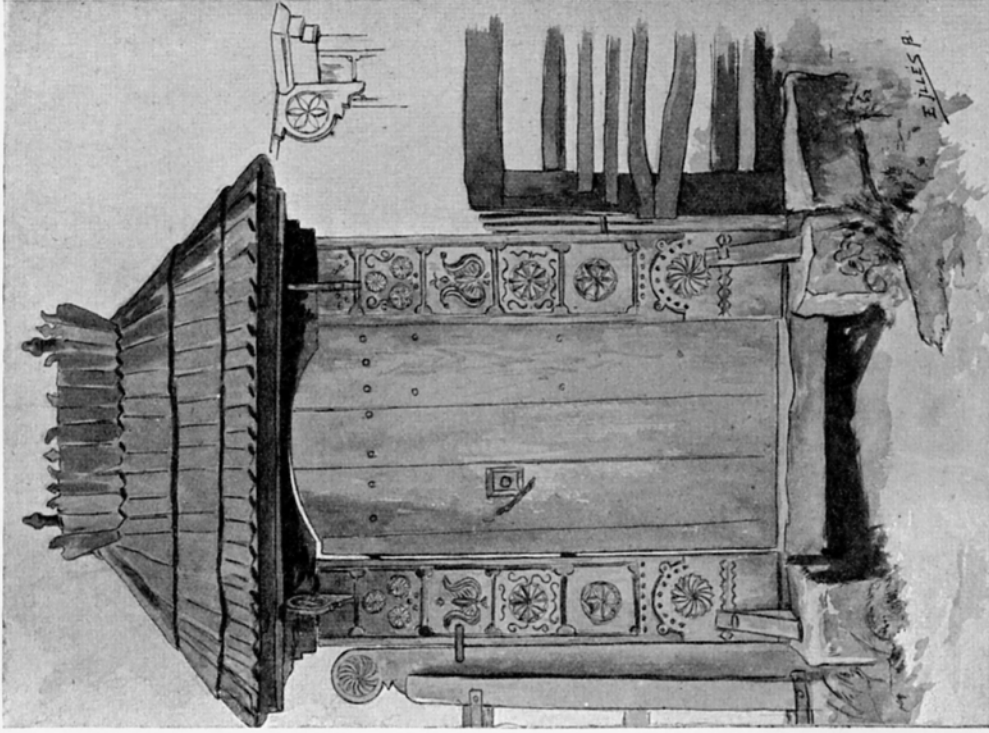
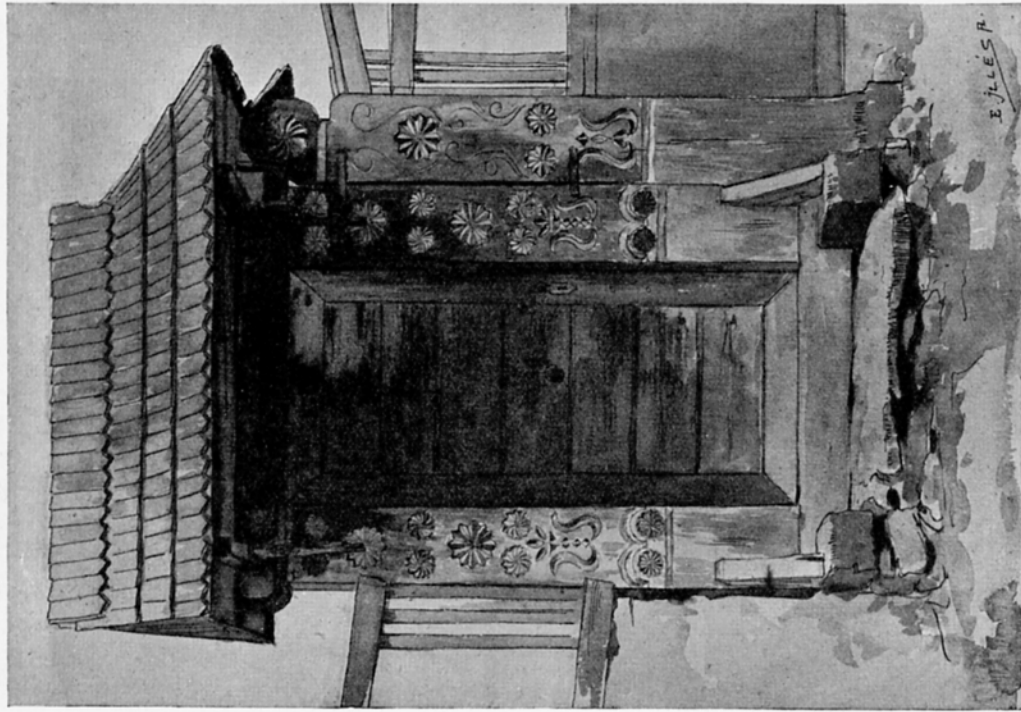
696 SZEKLER GATEWAY, COMITAT UDVARHELY

HUNGARY—TRANSYLVANIA



697 & 698 DOORWAYS AT GYERŐ-MONOSTOR, KALOTASZEG. FROM DRAWINGS BY E. ALADÁR JLLÉS

HUNGARY—TRANSYLVANIA



699 & 700 DOORWAYS AT GYERŐ-MONOSTOR AND KÖRÖSFŐ,
KALOTASZEG. FROM DRAWINGS BY E. ALADÁR JLLÉS

TRANSYLVANIA.

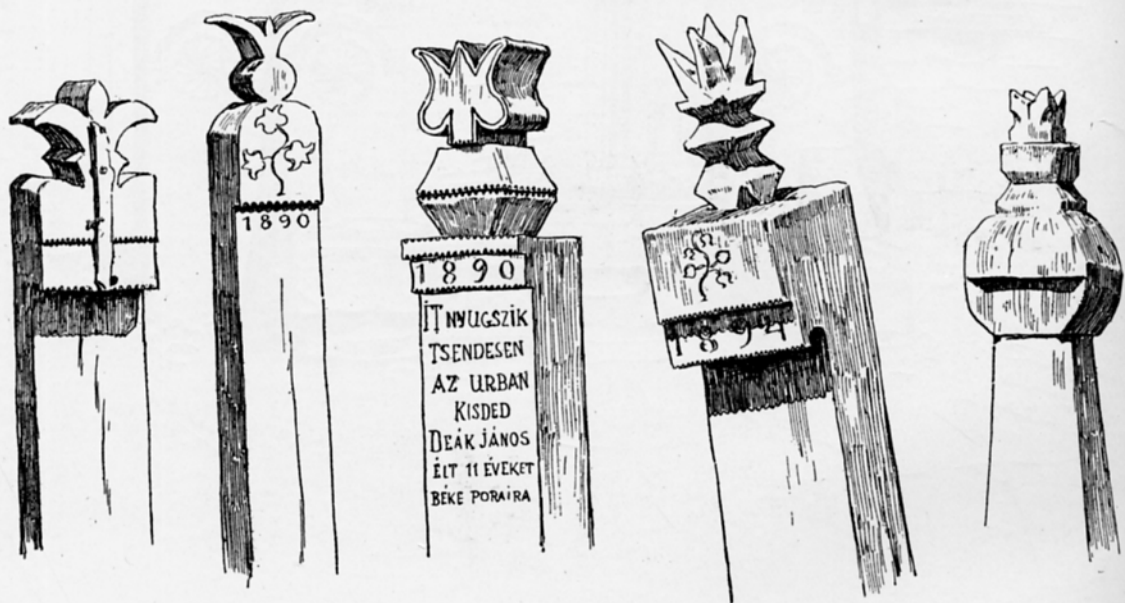
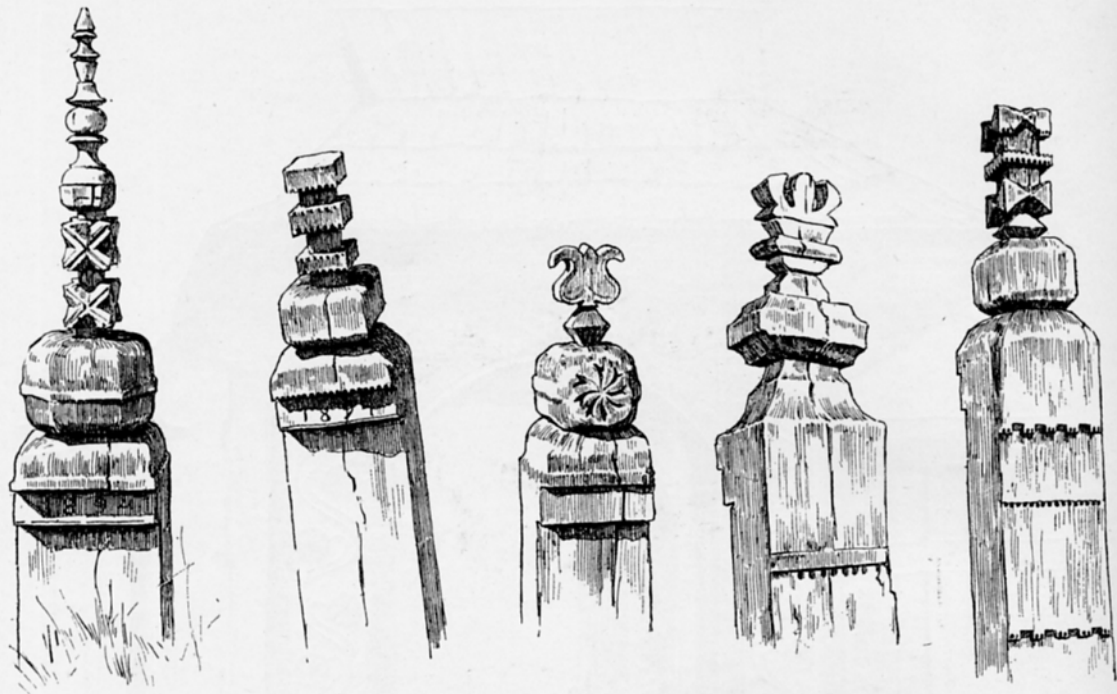


DOORWAY AT ZSOBOK, KALOTASZEG
FROM A WATER-COLOUR DRAWING BY E. ALADÁR JLLÉS.



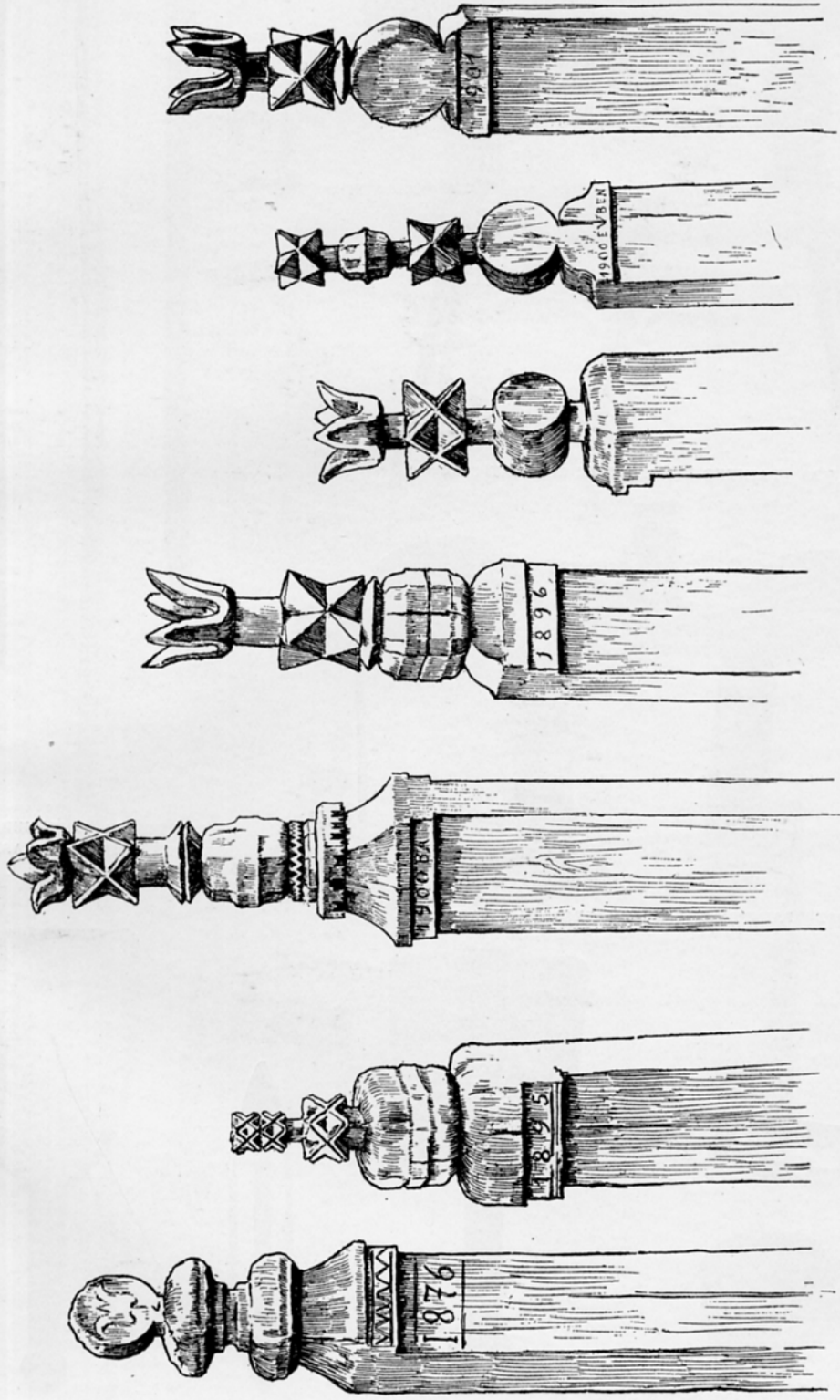
702 DOORWAY AT GYERŐ-MONOSTOR, KALOTASZEG
FROM A DRAWING BY E. ALADÁR JLLÉS

HUNGARY—TRANSYLVANIA



703 TO 712 WOODEN GRAVE-POSTS (*FEJFA*), FROM KALOTASZEG
FROM DRAWINGS BY E. ALADÁR JLLÉS

HUNGARY—TRANSYLVANIA



713 TO 719 WOODEN GRAVE-POSTS (FEJFA), FROM KALOTASZEG
FROM DRAWINGS BY E. ALADÁR JLLÉS

HUNGARY—TRANSYLVANIA



720 PAINTED BENCH, FROM COMITAT CSIK



722 TO 724 SHEPHERDS' STICKS, FROM KALOTASZEG AND MEZŐSÉG



721 PAINTED OXEN-YOKE, FROM KALOTASZEG



725 & 726 WOODEN WATER-DIPPERS



727 TO 729 CARVED SZÉKLER HAND-MANGLES AND SHUTTLE FROM KALOTASZEG



TRANSYLVANIA.



PEASANT GIRLS FROM KÖRÖSFŐ, KALOTASZEG
FROM A WATER-COLOUR DRAWING BY E. ALADÁR JLLÉS.

HUNGARY—TRANSYLVANIA



731 TO 736 EARTHENWARE JUGS AND TANKARDS, FROM KALOTASZEG

HUNGARY—TRANSYLVANIA



737 TO 742 EARTHENWARE JUGS AND PLATE

HUNGARY—TRANSYLVANIA



743 PEASANT'S DRESS FROM TOROCZKÓ



744 PEASANT'S DRESS FROM TOROCZKÓ

From drawings by Aladár Kriesch Körösfői



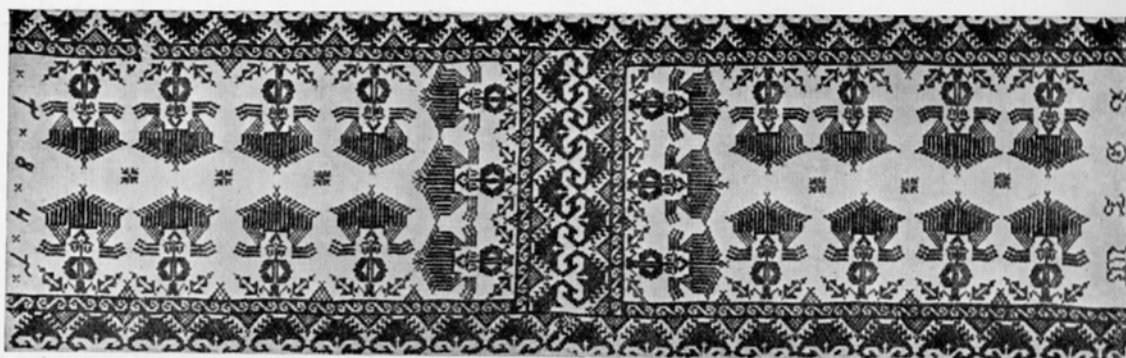
745 PEASANT'S DRESS FROM TOROCZKÓ
From a drawing by Aladár Kriesch Körösfői



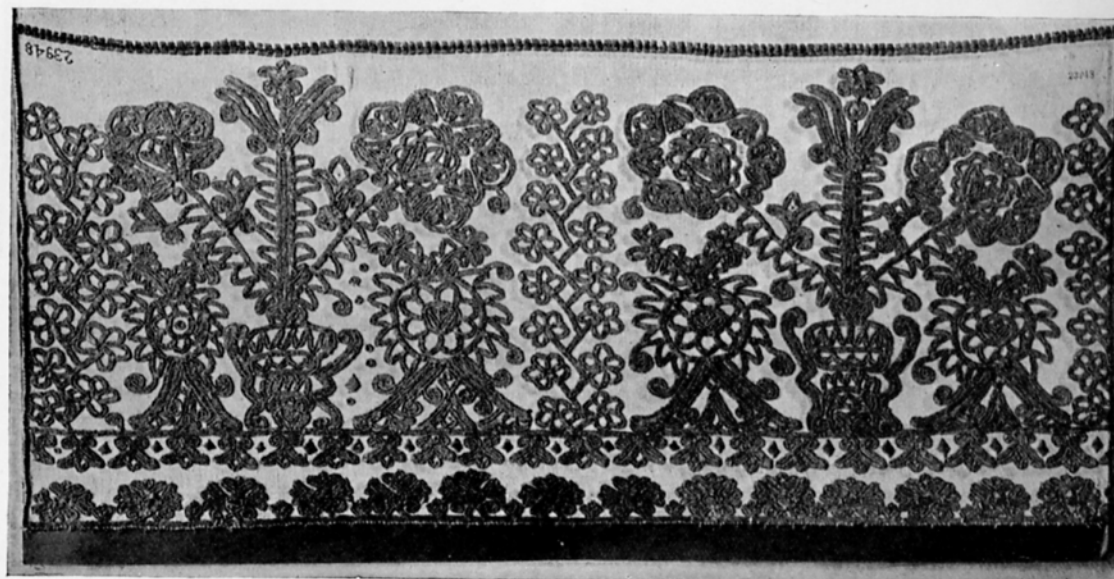
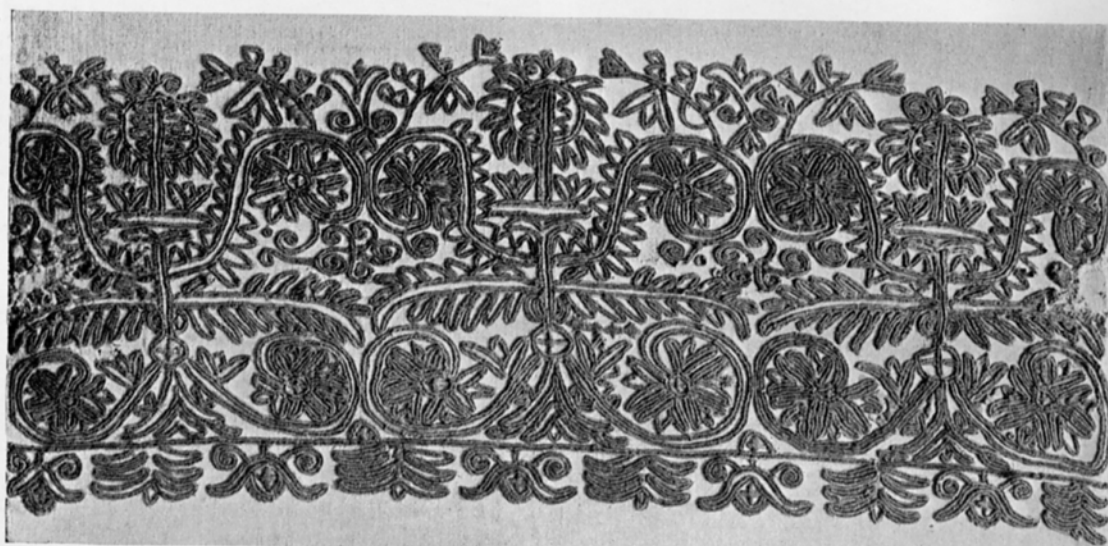
746 ROUMANIAN PEASANT'S DRESS
From a drawing by E. Aladár Jllés

HUNGARY—TRANSYLVANIA





751 EMBROIDERED BORDER OF BED-COVER, FROM NÁGY-SZEBIN (1841)



752 & 753 EMBROIDERY FOR PILLOW-CASES, FROM KALOTASZEG