

TYROL AND VORARLBERG



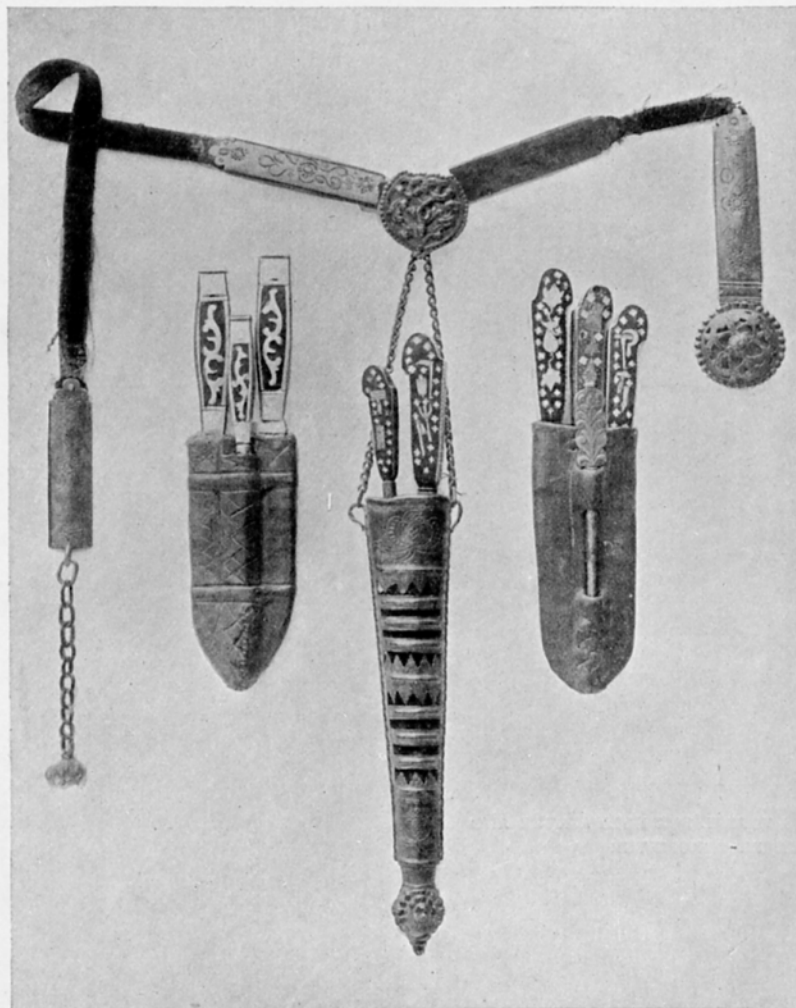
149 TO 152 CARVED WOODEN PESTLES AND MORTARS

153 CARVED MANGLE-BOARD (ROLLBRETT)
(1857)



154 & 155 CARVED WOODEN SHEATHS FOR SCYTHES

TYROL AND VORARLBERG

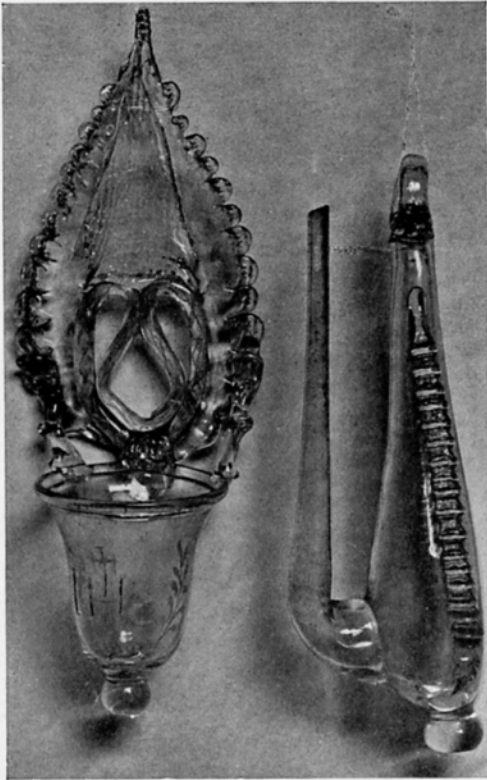


156 WOMAN'S BELT AND ACCESSORIES—OLD STERZING WORK



157 & 158 CARVED WOOD MOULDINGS

TYROL AND VORARLBERG



159 & 160 GLASS VESSEL FOR HOLY WATER AND WATER-BAROMETER



161 & 162 EARTHENWARE PLATES



163 TO 165 CARVED WOODEN SHEATHS FOR SCYTHES

TYROL AND VORARLBERG



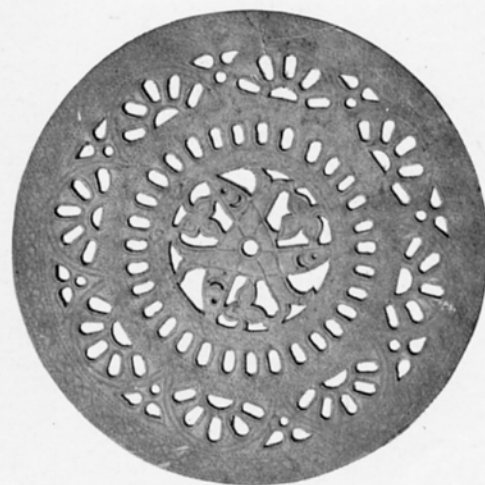
166 EARTHENWARE JUG AND PLATE
(LATE 17TH CENTURY)



168 WROUGHT-IRON GRAVE-TABLET



167 WROUGHT-IRON GRAVE-TABLET



169 PIERCED WROUGHT-IRON TRIVET

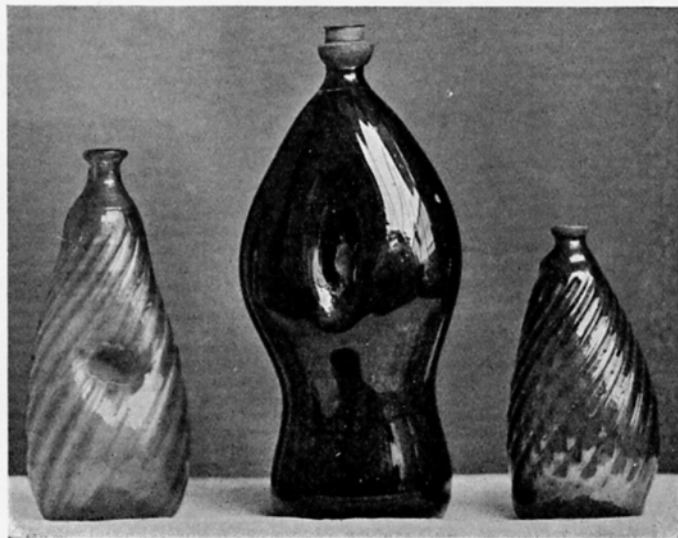
TYROL AND VORARLBERG



170 TO 172 PAINTED GLASS WINE BOTTLES

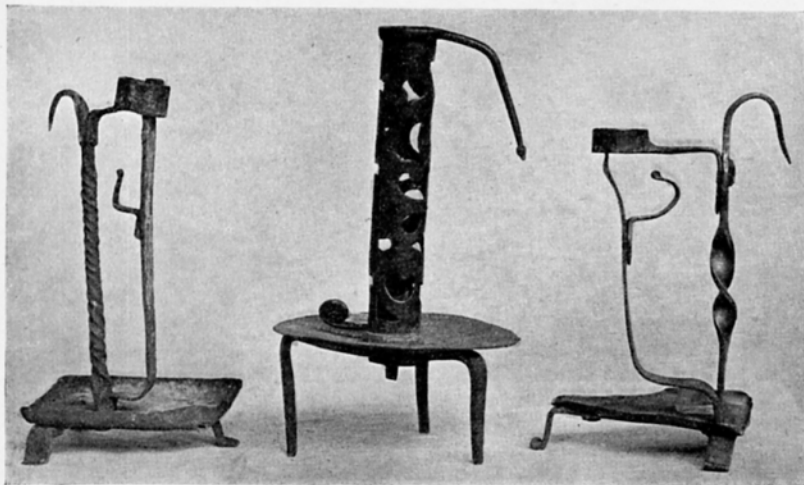


173 TO 175 PAINTED GLASS WINE BOTTLES



176 TO 178 GLASS SPIRIT BOTTLES

TYROL AND VORARLBERG



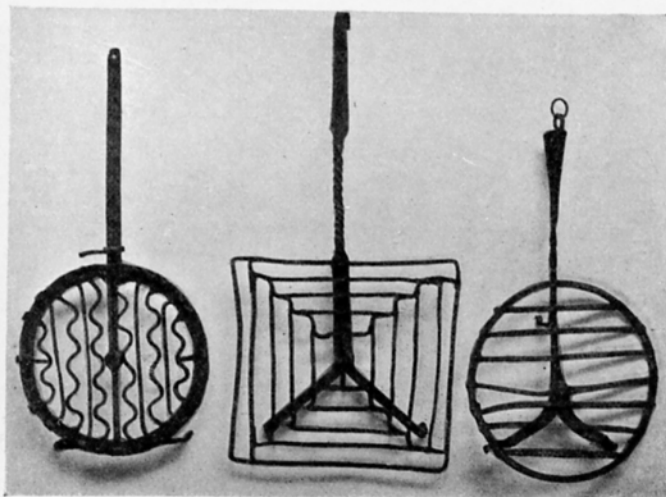
179 TO 181 WROUGHT-IRON CANDLESTICKS



182 TO 184 PEWTER LANTERNS

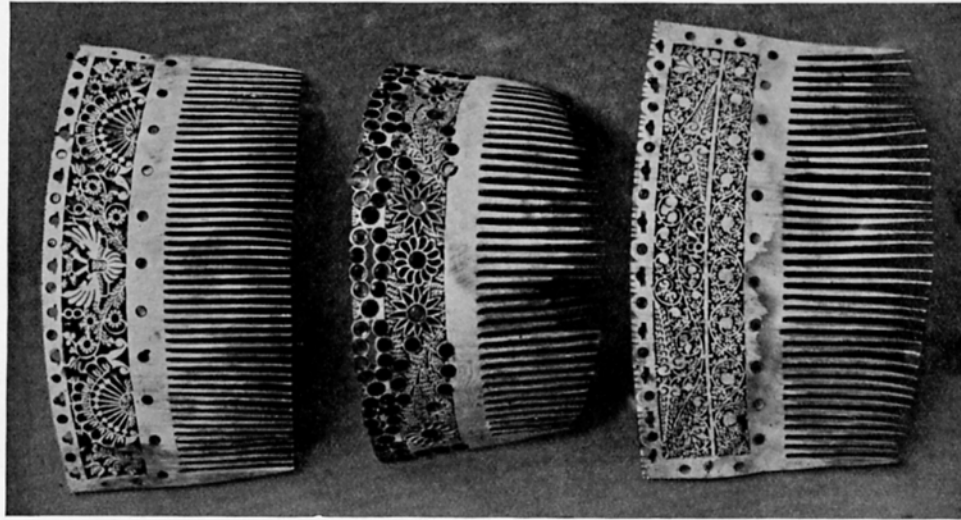


185 WROUGHT-IRON CHARM,
USED BY COOKS

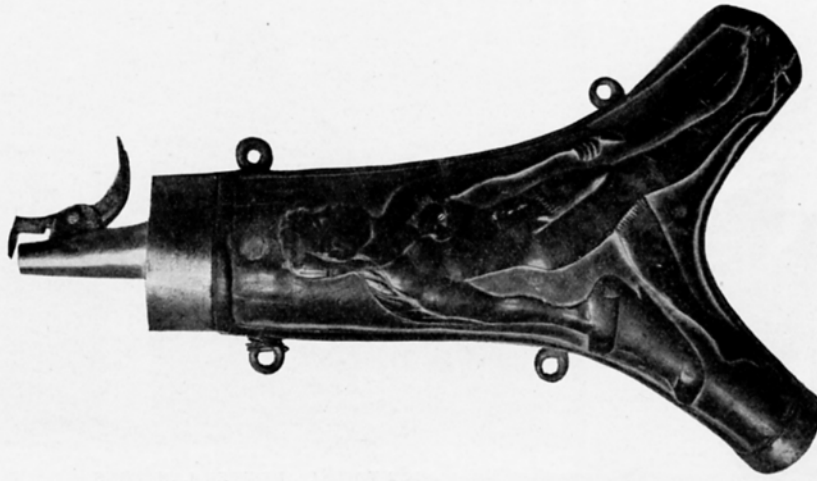


186 TO 188 WROUGHT-IRON TRIVETS

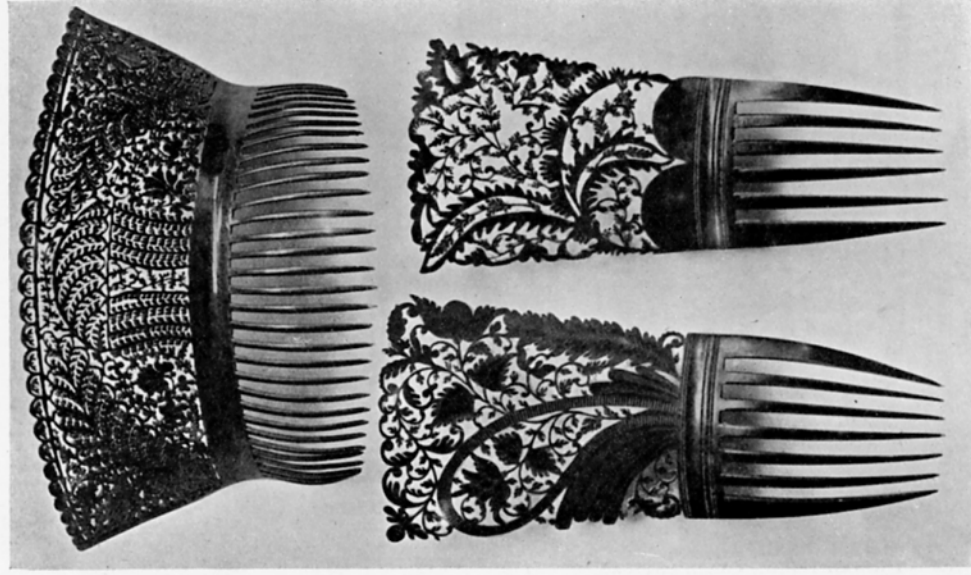
TYROL AND VORARLBERG



189 TO 191 PIERCED HORN COMBS, FROM STERZING



192 POWDER-HORN

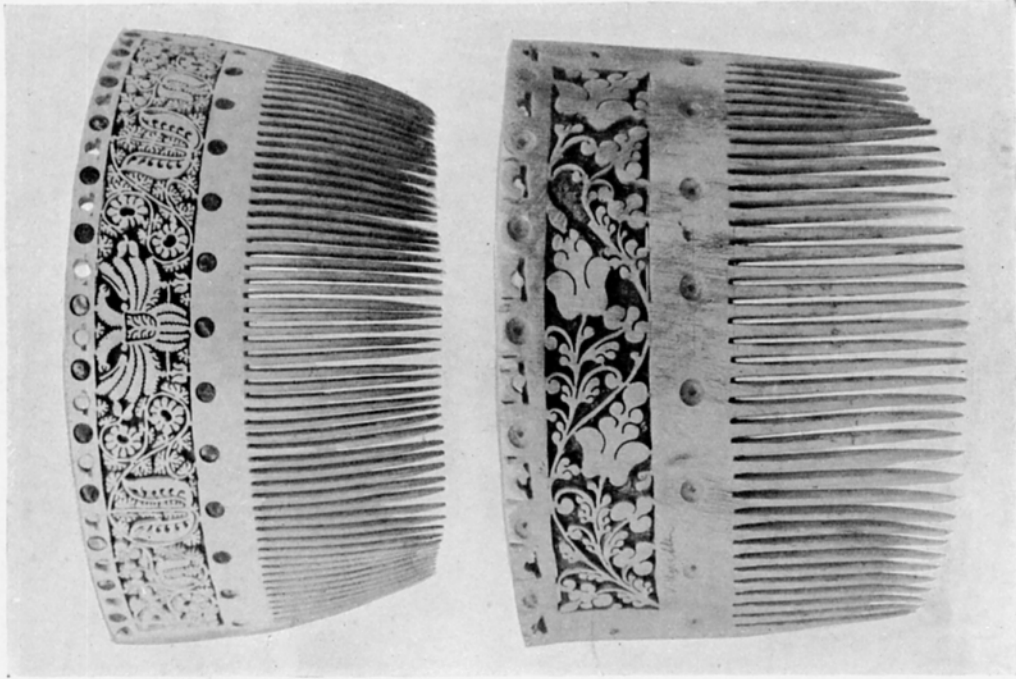


193 TO 195 PIERCED HORN COMBS, FROM STERZING

TYROL AND VORARLBERG



196 POWDER-HORN

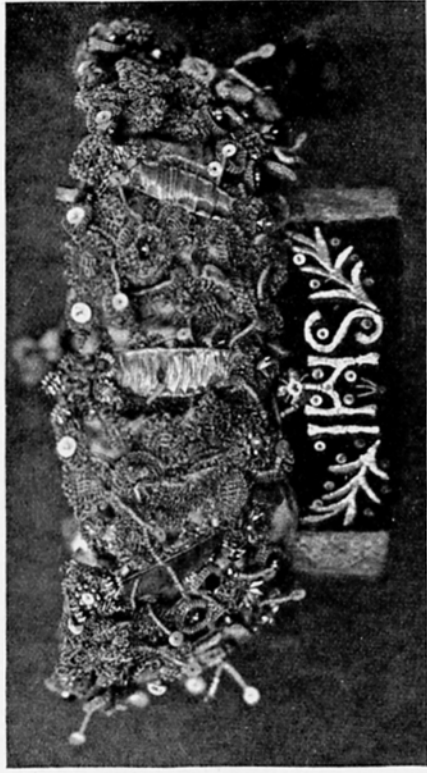


197 & 198 CARVED HORN COMBS, FROM STERZING



199 POWDER-HORN

TYROL AND VORARLBERG



200 BRIDAL CROWN, WITH GOLD AND SILVER FILIGREE SET WITH COLOURED GLASS BEADS

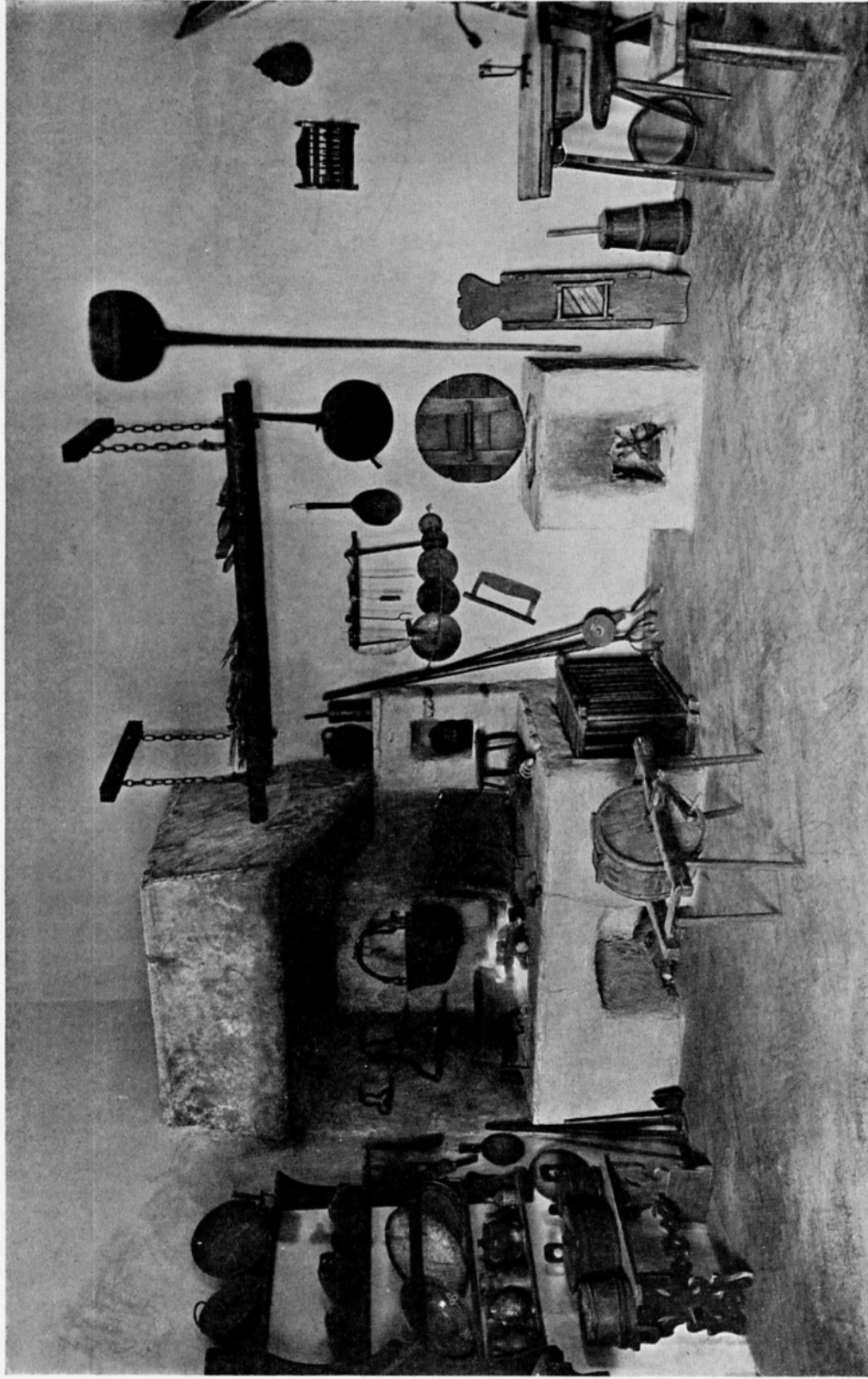


201 MAN'S LEATHER BELT ORNAMENTED WITH BRASS AND IRON STUDS



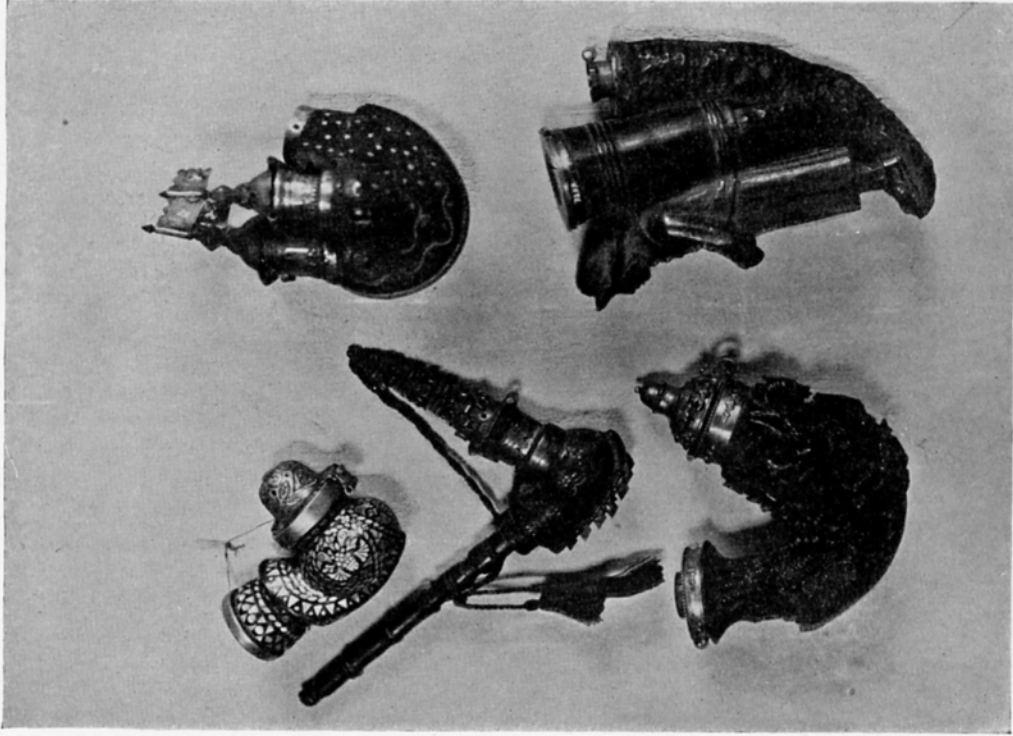
202 MAN'S LEATHER BELT ORNAMENTED WITH PEWTER WIRE

STYRIA

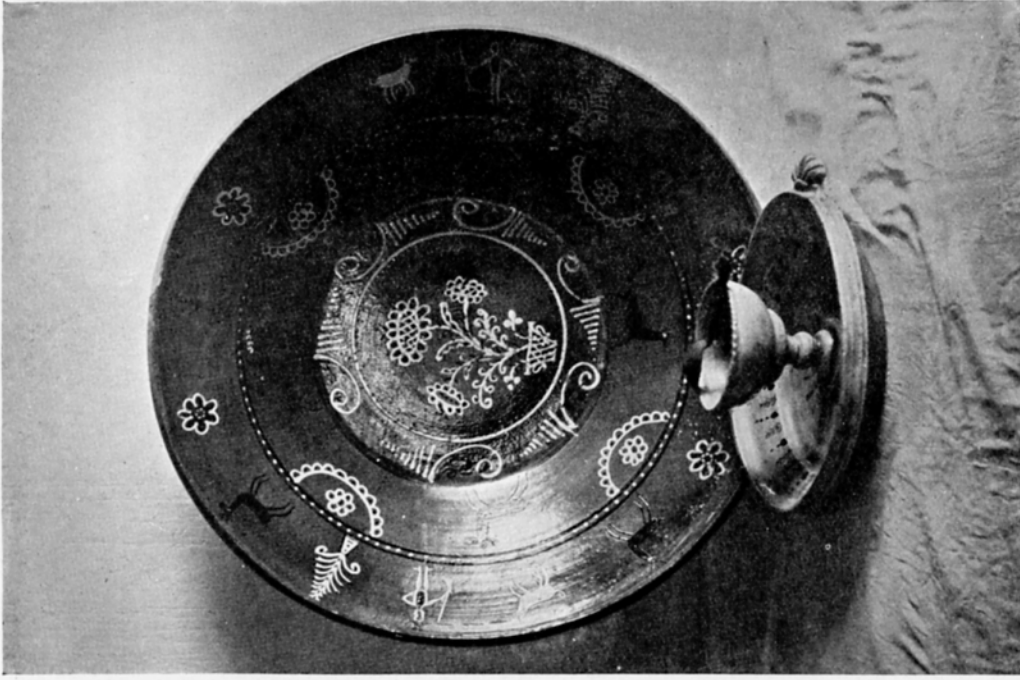


203 AN OLD STYRIAN INTERIOR, RE-ERECTED IN THE LANDESMUSEUM, GRATZ

STYRIA



204 TO 208 CARVED WOODEN PIPES



209 SGRAFFITO PLATE AND EGG-CUP

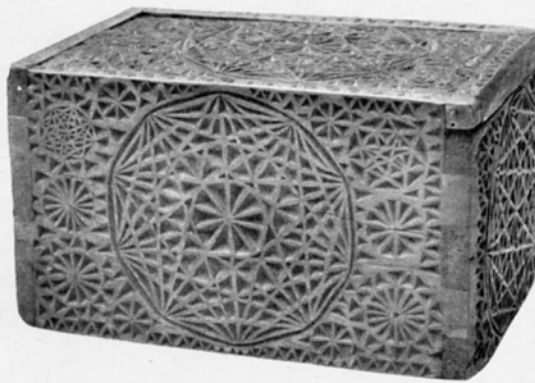
STYRIA



210 CARVED AND PAINTED SPOON-RACK



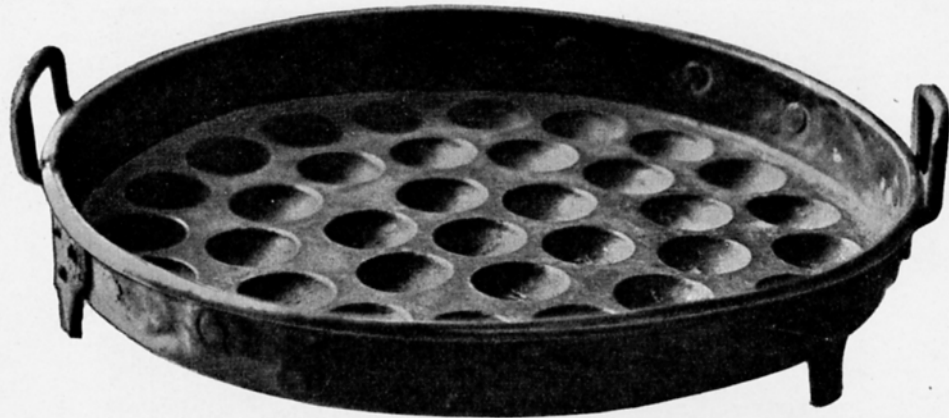
212 CARVED MANGLE-BOARD (ROLLBRETT)



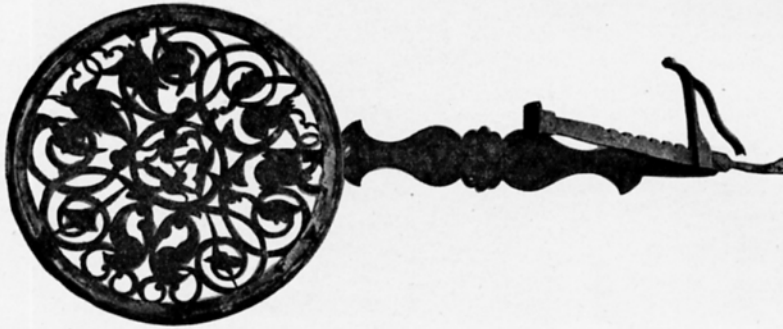
211 CARVED JEWEL-BOX



213 CARVED MANGLE-BOARD (ROLLBRETT)



214 WROUGHT-IRON EGG-DISH



215 WROUGHT-IRON TRIVET

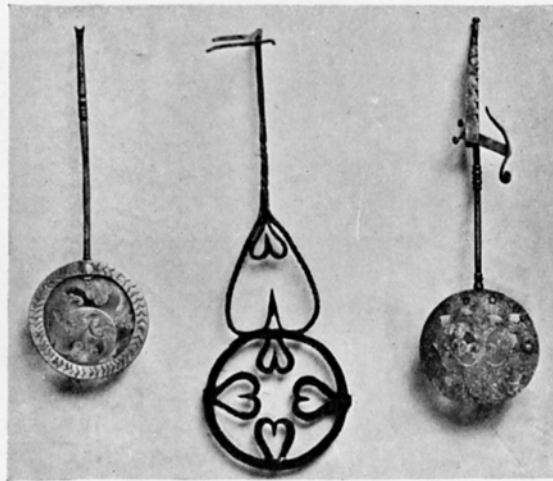


216 TO 218 CARVED PEWTER SPOONS

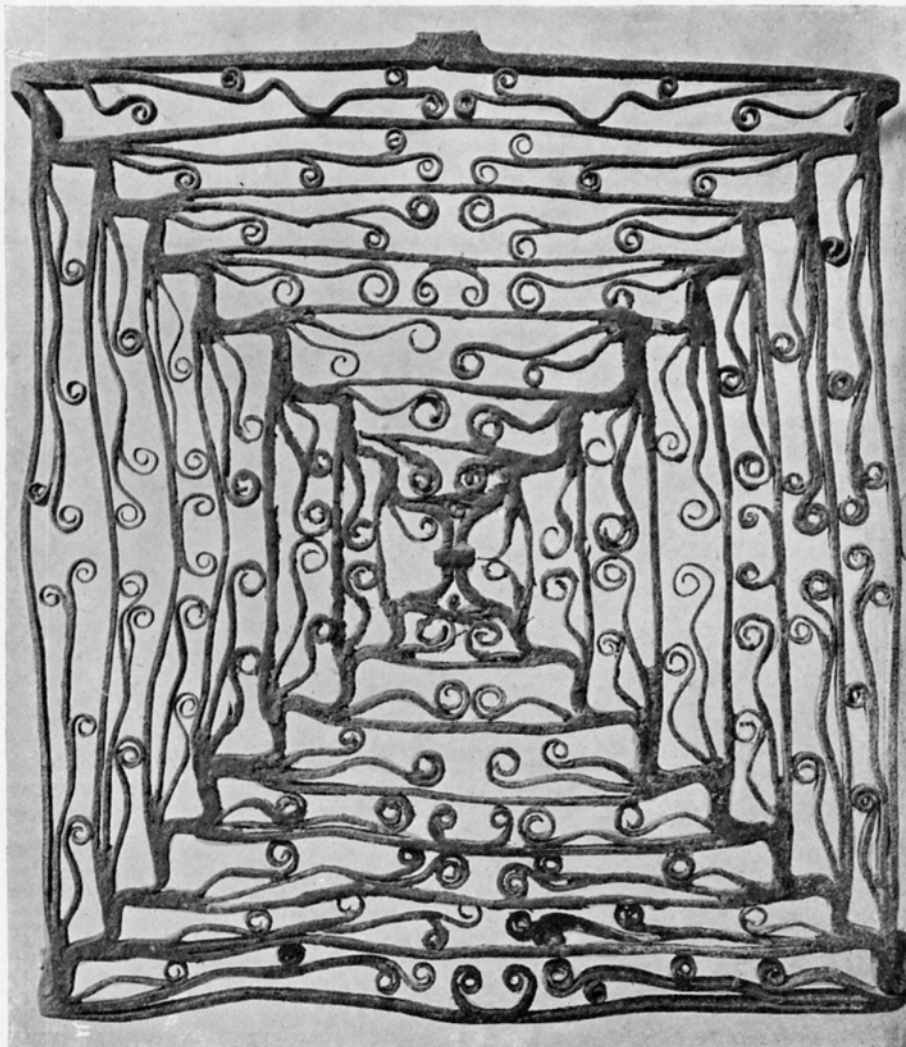


219 EARTHENWARE BEER JUG

STYRIA



220 TO 222 BRASS AND WROUGHT-IRON TRIVETS



223 WROUGHT-IRON TRIVET



224 & 225 WROUGHT-IRON SIGNS OF A SHOESMITH AND HATTER
(No. 224 By permission of Messrs. Gerlach & Wiedling)