

BOHEMIA—EGERLAND



226 CARVED AND PAINTED "MARRIAGE" COFFER



227 CARVED AND PAINTED CHAIR

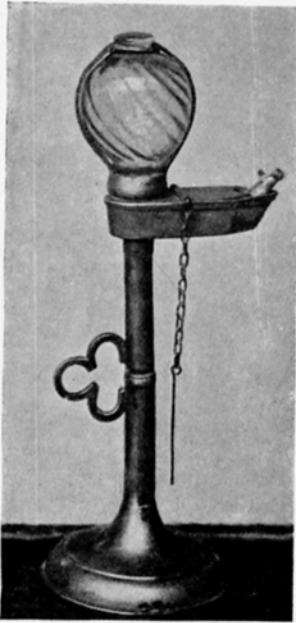


228 STONWARE BEER TANKARD



229 EARTHENWARE PLAQUE

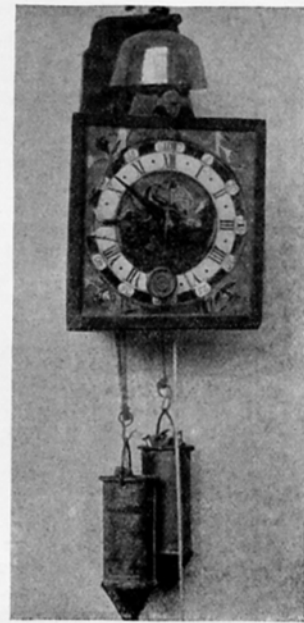
BOHEMIA—EGERLAND



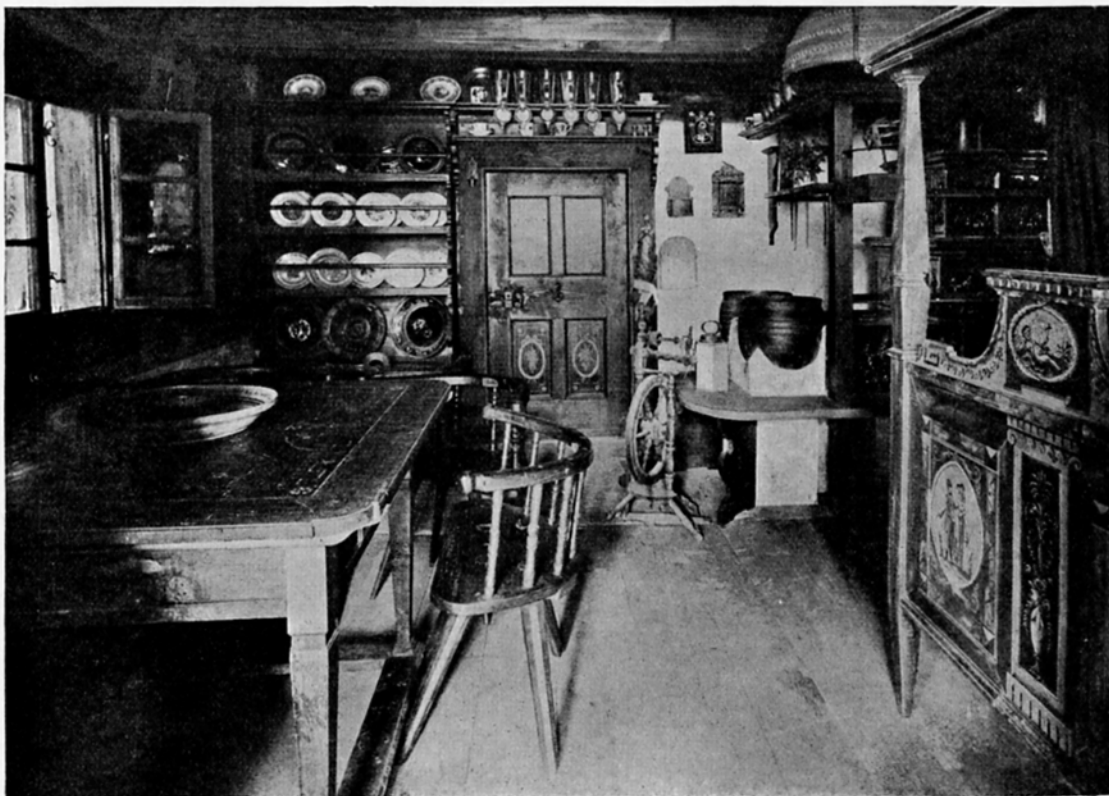
230 PEWTER LAMP



231 PEWTER COFFEE POT



232 WALL-CLOCK



233 INTERIOR OF A PEASANT'S LIVING-ROOM
(By permission of Messrs. Gerlach & Wiedling)

BOHEMIA—EGERLAND



234 EARTHENWARE PLATE



236 PEWTER BEER CAN



237 EARTHENWARE PLATE



238 EARTHENWARE PLATE



235 PEWTER PLATE

BOHEMIA—EGERLAND



239 EMBROIDERED CUFF



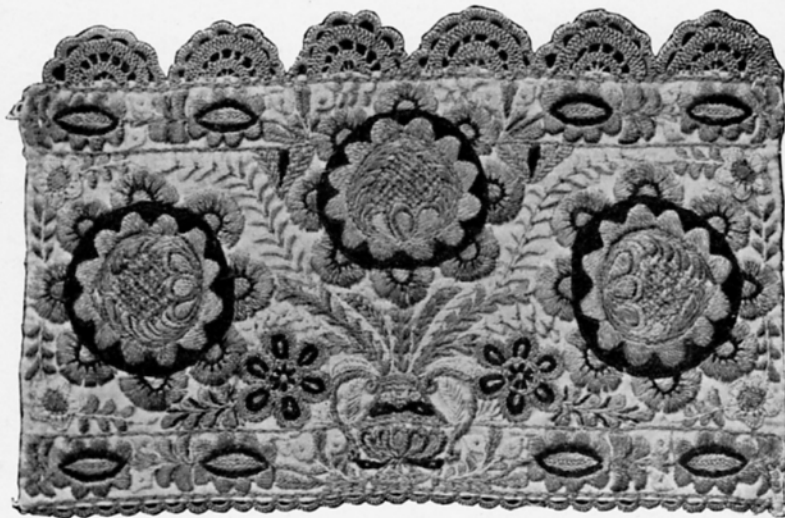
240 EMBROIDERED CAP



241 EMBROIDERED CAP



242 EMBROIDERED CUFF



243 EMBROIDERED CUFF

BOHEMIA—EGERLAND



(From the Collection of Mr. F. Pontini)



(In the Museum für Österreichische Volkskunde, Vienna)

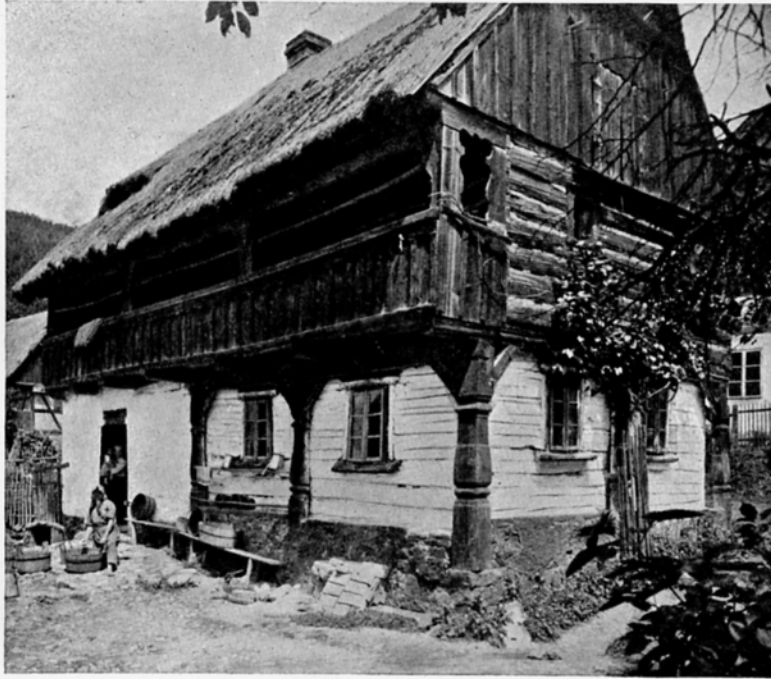


(In the Erzherzog Rainer-Museum, Brünn)



(In the Museum für Österreichische Volkskunde, Vienna)

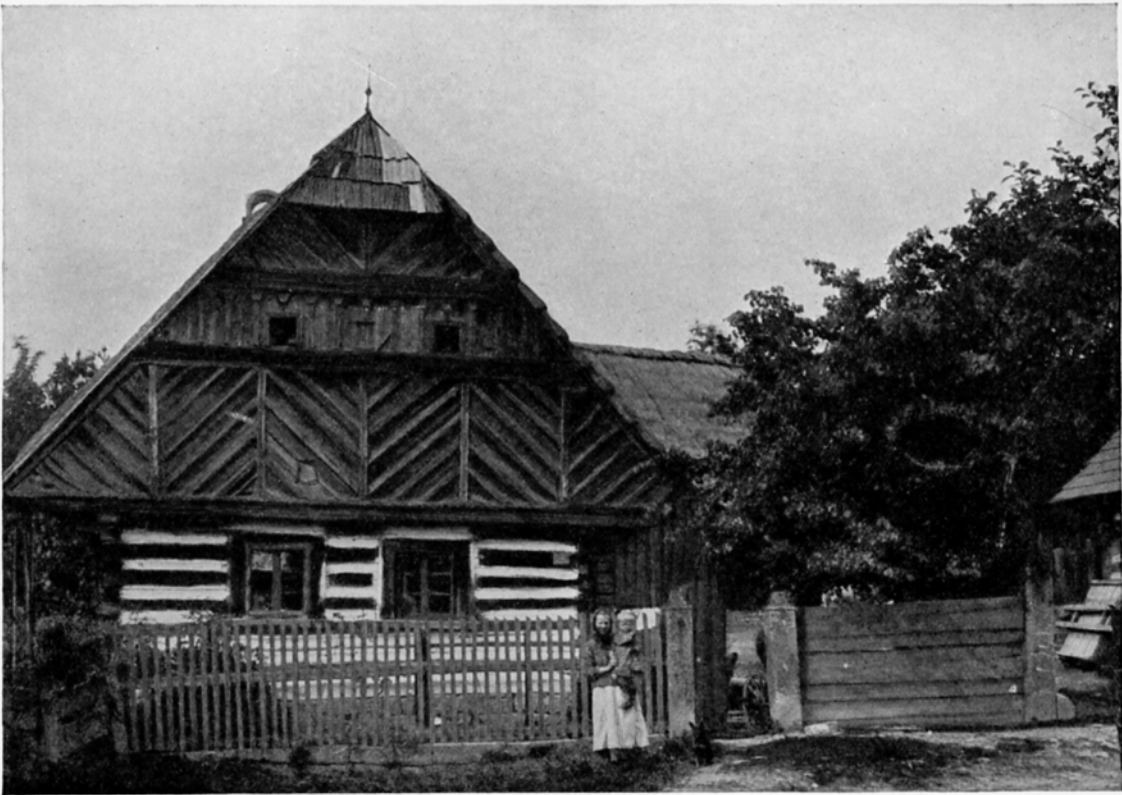
BOHEMIA



248 & '249 PEASANTS' HOUSES AT KUNDRATITZ AND HLINAL
(By permission of Messrs. Gerlach & Wiedling)

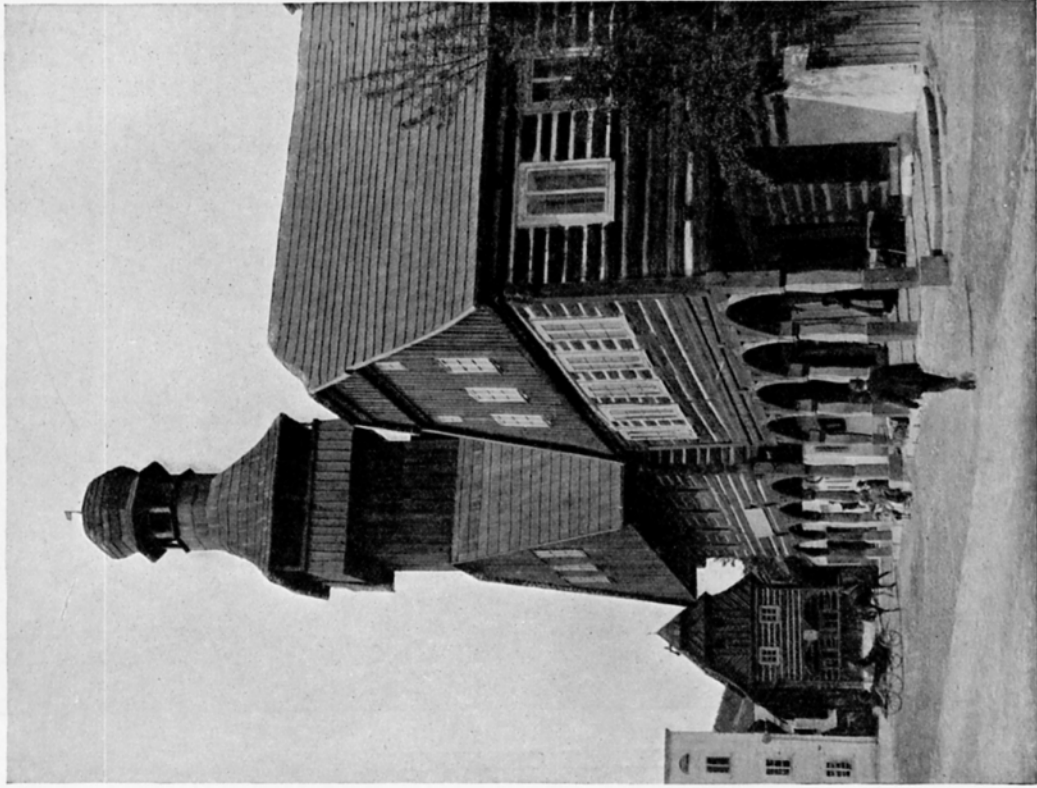


250 PEASANT'S HOUSE NEAR HORITZ

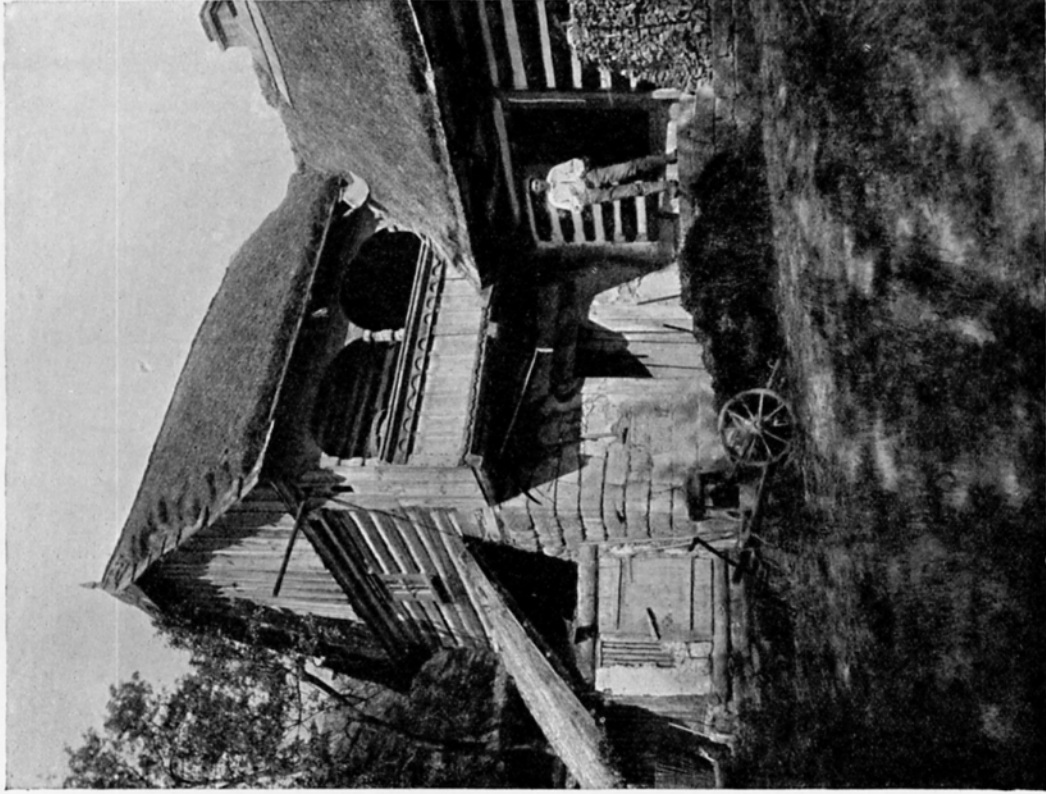


251 MILLER'S HOUSE IN THE BOHEMIAN WOLD

BOHEMIA



252 OLD "RATHHAUS" AT EISENBROD, NOW DEMOLISHED

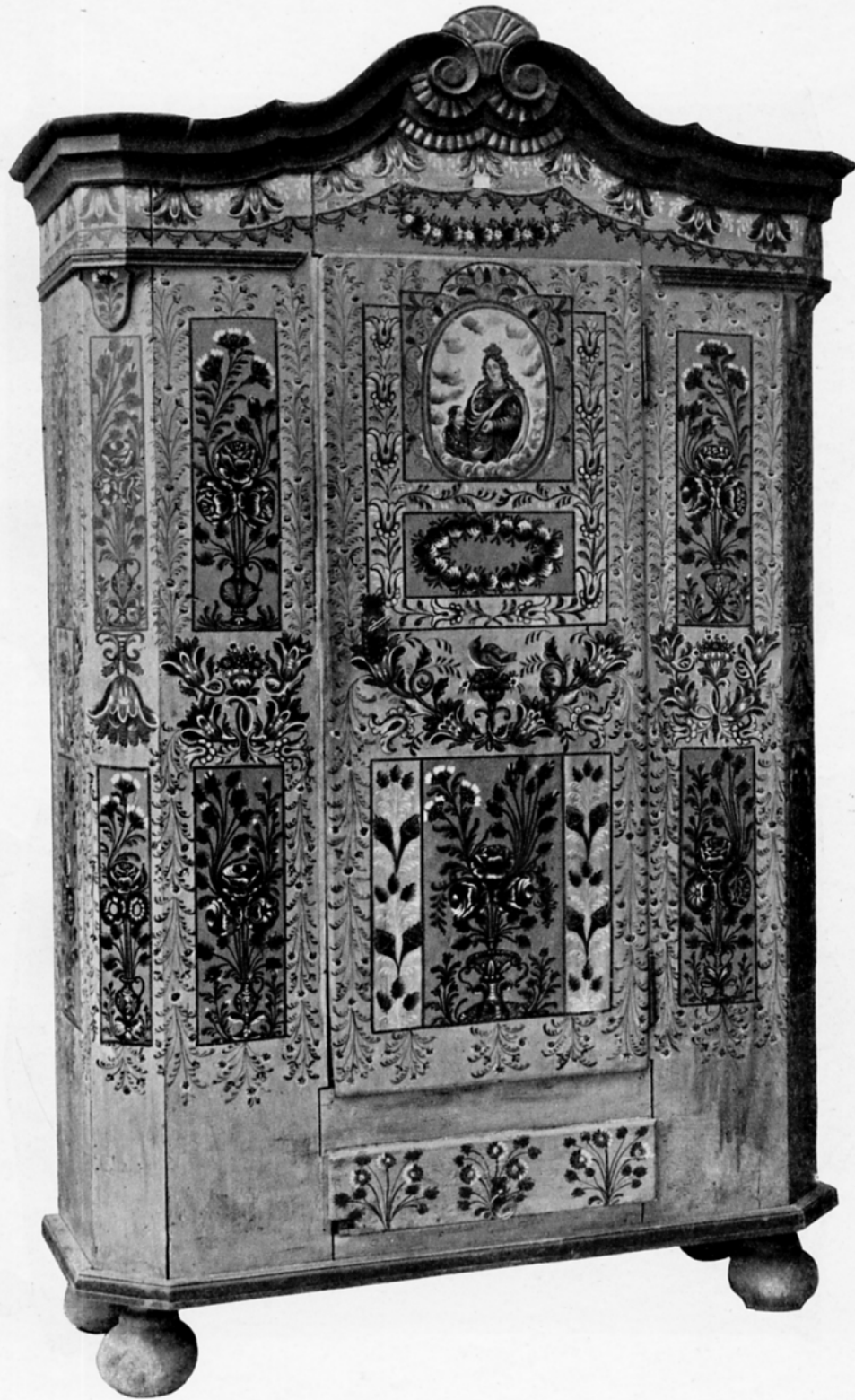


253 PEASANT'S HOUSE NEAR TURNAU (1816)



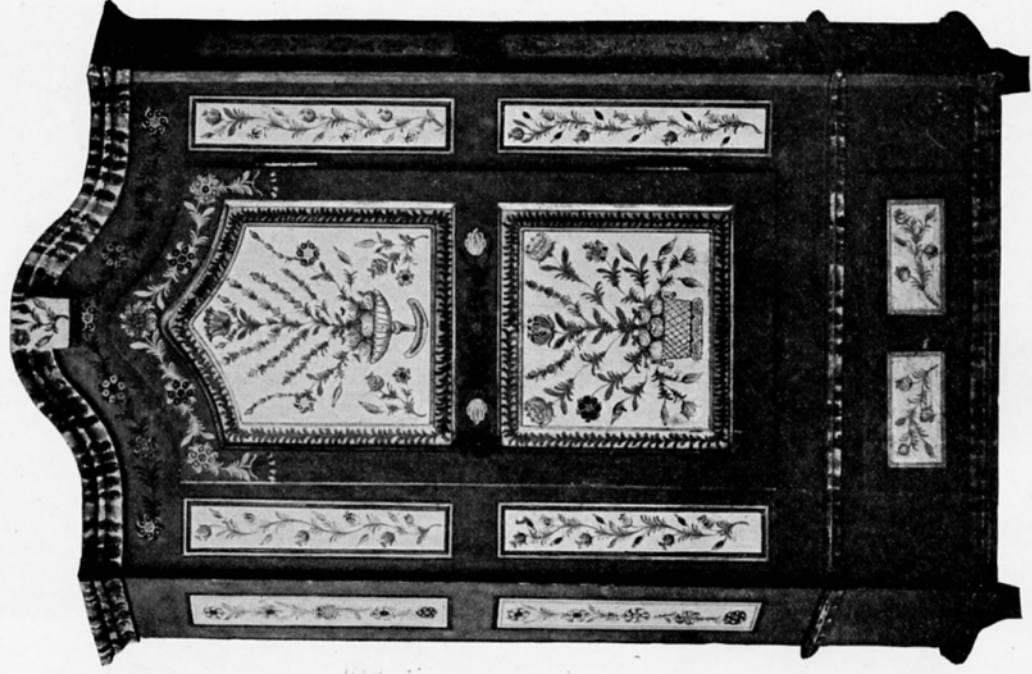
254 & 255 PEASANTS' HOUSES AT CERNUTKY

BOHEMIA



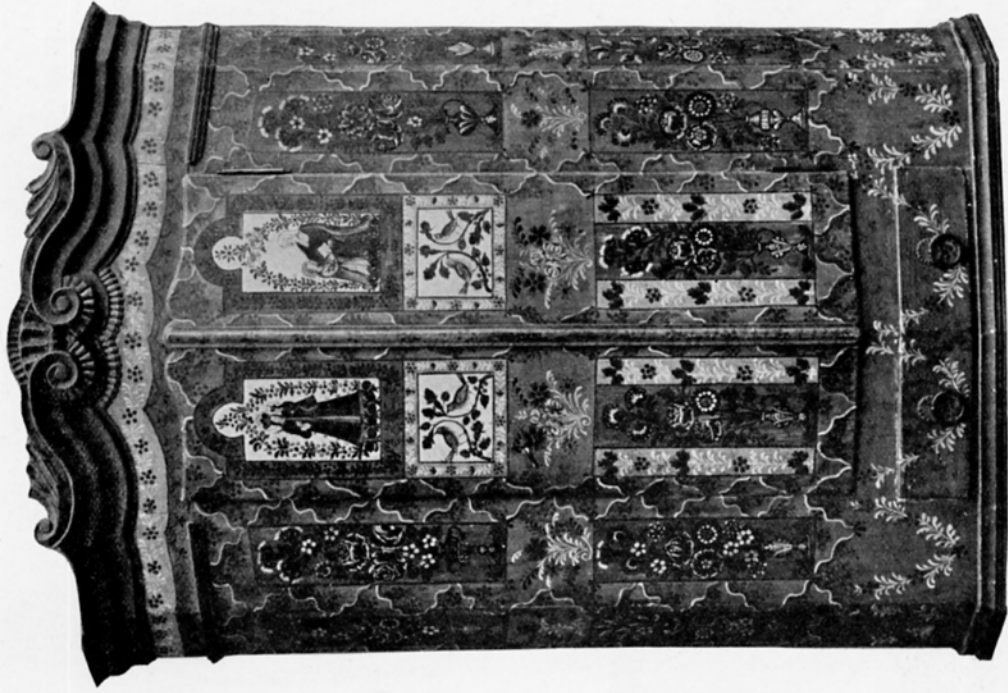
256 CARVED AND PAINTED CUPBOARD (LATE 18TH CENTURY)

BOHEMIA



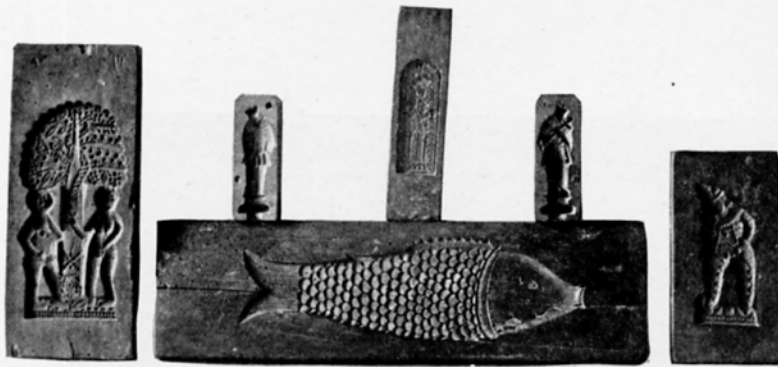
257 & 258 PAINTED CUPBOARDS, FROM HLINSKO

BOHEMIA



259 & 260 CARVED AND PAINTED CUPBOARDS, FROM TURNAU AND HLINSKO

BOHEMIA



261 TO 266 HONEY-CAKE MOULDS

267 CARVED
PLANE

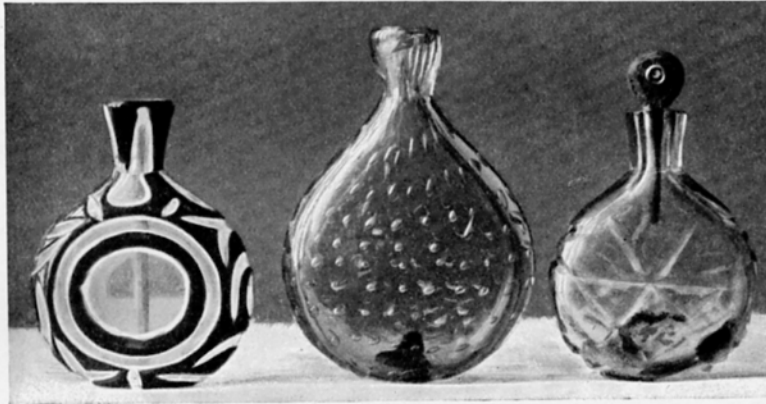


268 CARVED CHAIR

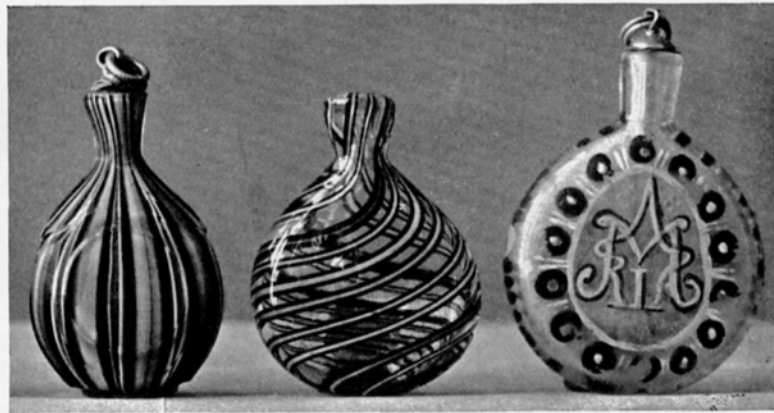


269 EARTHENWARE WINE JAR

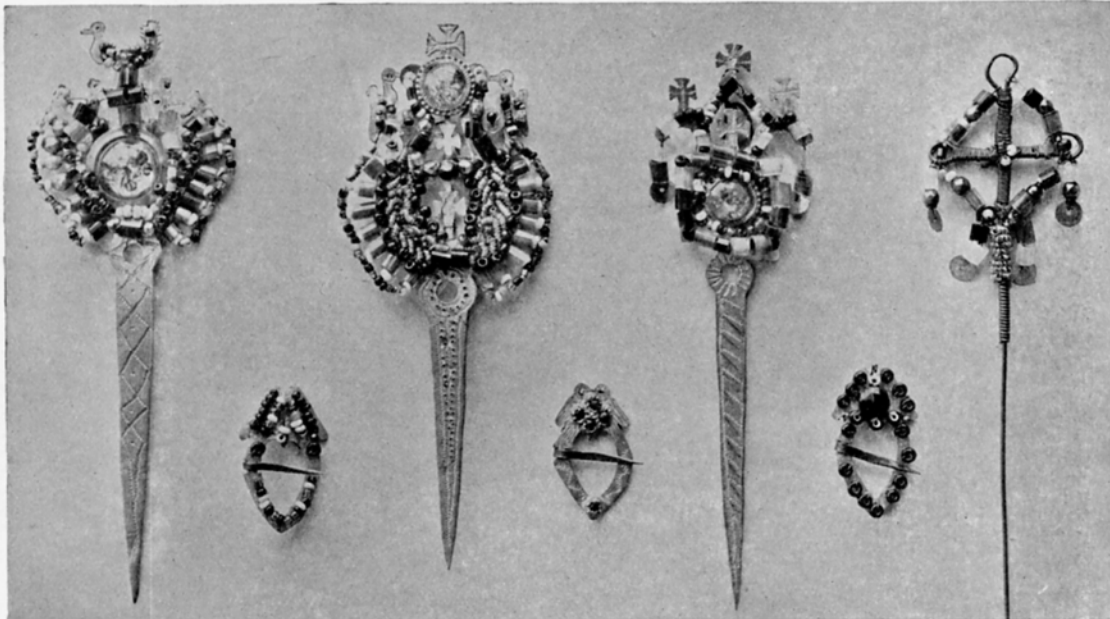
BOHEMIA



270 TO 272 GLASS WINE BOTTLES

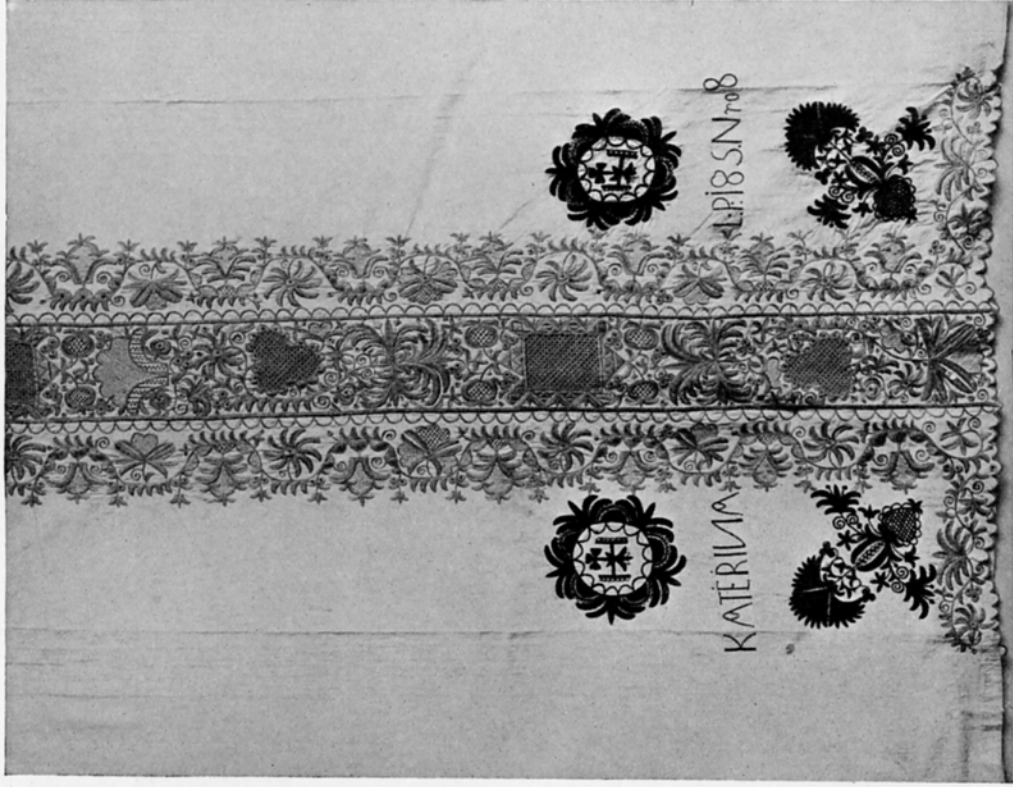
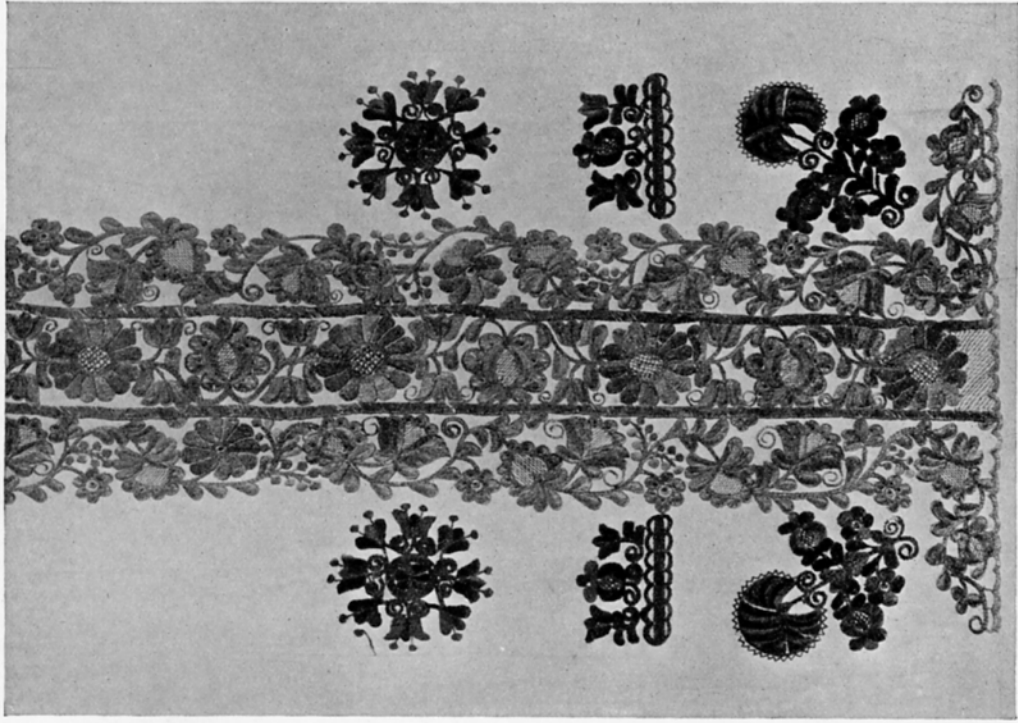


273 TO 275 GLASS SNUFF JARS



276 TO 282 PINS WITH BEAD ORNAMENT, USED TO ATTACH FLAX TO SPINDLE

BOHEMIA



283 & 284 EMBROIDERED ENDS OF CHURCHING-SHAWLS