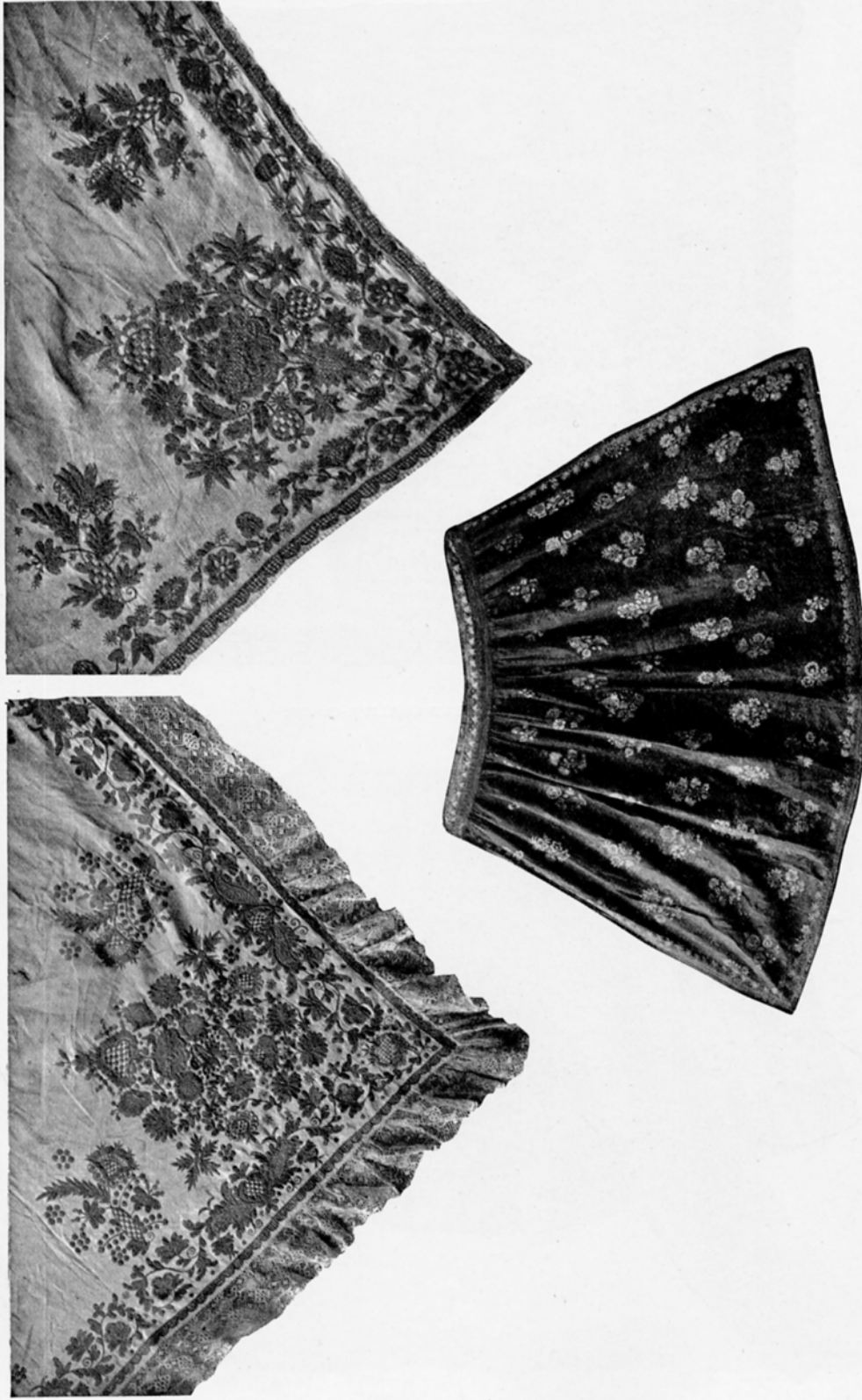


BOHEMIA



285 & 286 CORNERS OF HEAD-SHAWLS, EMBROIDERED IN
RED SILK ON LINEN. 287 EMBROIDERED APRON

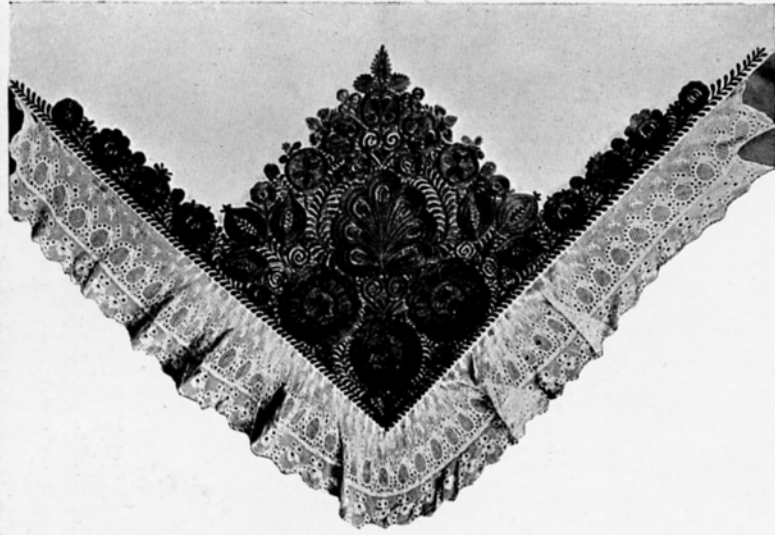


288 EMBROIDERED CHALICE-COVER



289 EMBROIDERED JACKET

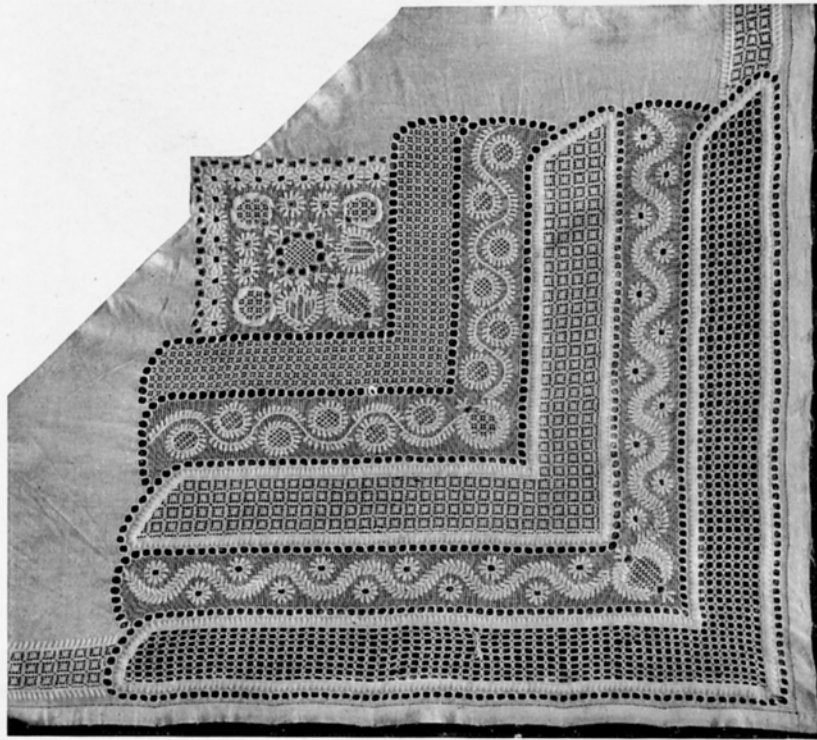
BOHEMIA



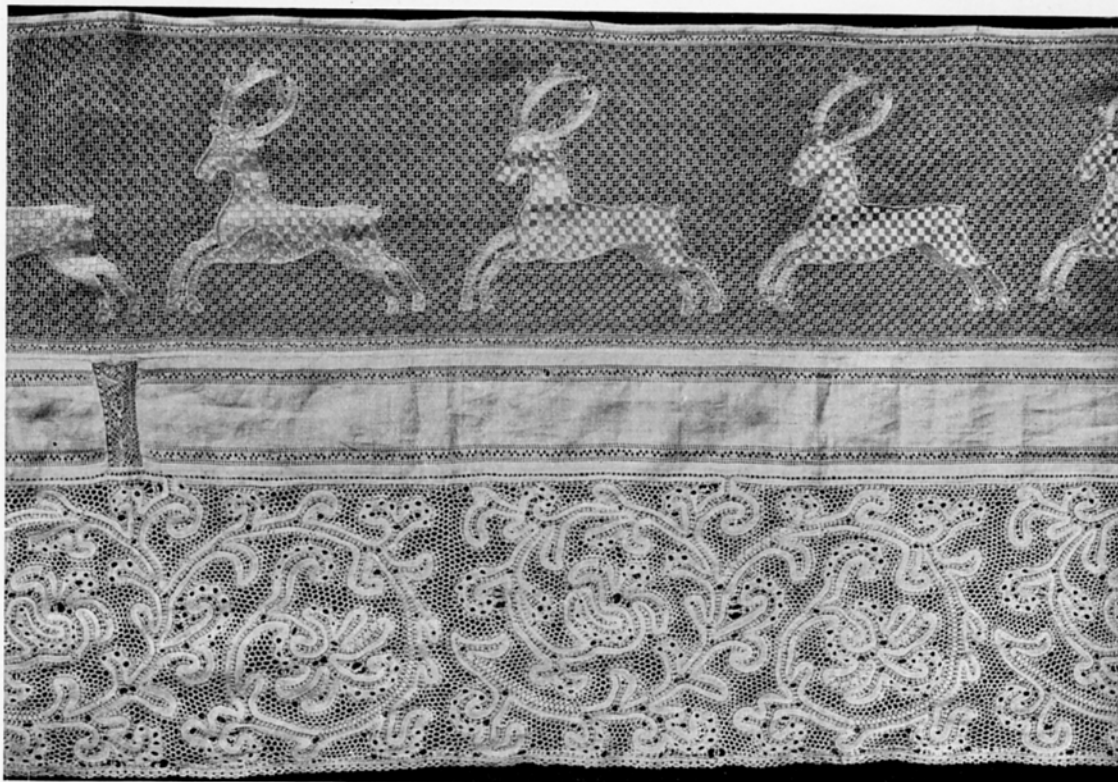
290 CORNER OF HEAD-SHAWL EMBROIDERED IN BLACK SILK ON LINEN
WITH LACE BORDER, FROM PILSEN



291 LACE BORDER OF A BEDCURTAIN



292 LACE CORNER OF A HEAD-SHAWL, FROM NORTH BOHEMIA



293 LACE BORDER OF A BEDCURTAIN

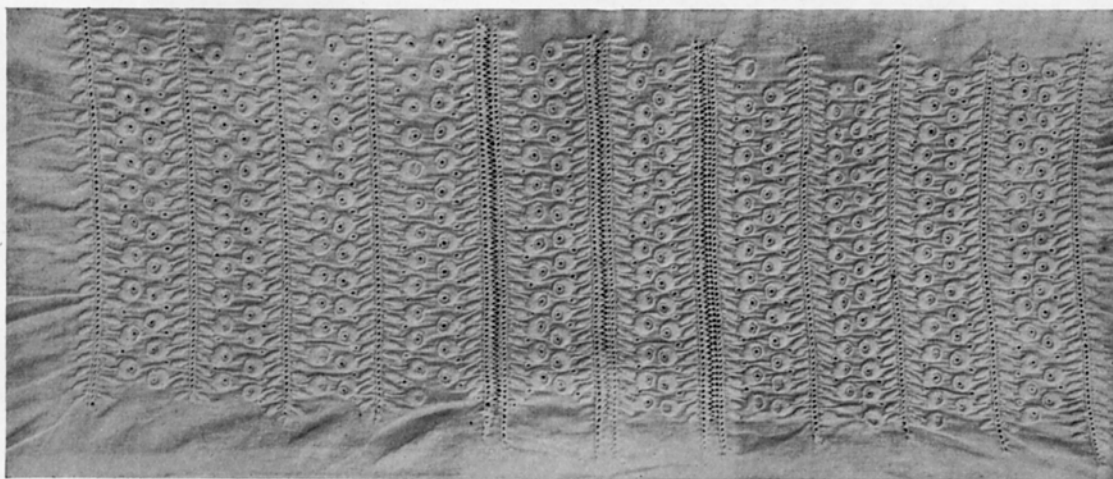
BOHEMIA



294 LACE CAP, FROM REICHENBERG



295 LACE BORDER OF A BEDCURTAIN



296 EMBROIDERED INSERTION FOR A WOMAN'S BLOUSE



297 PEASANT'S CHURCH DRESS, FROM HORITZ



298 PEASANT'S DRESS, FROM HORITZ



299 THE VILLAGE RAKE-MAKER, CERNUTKY

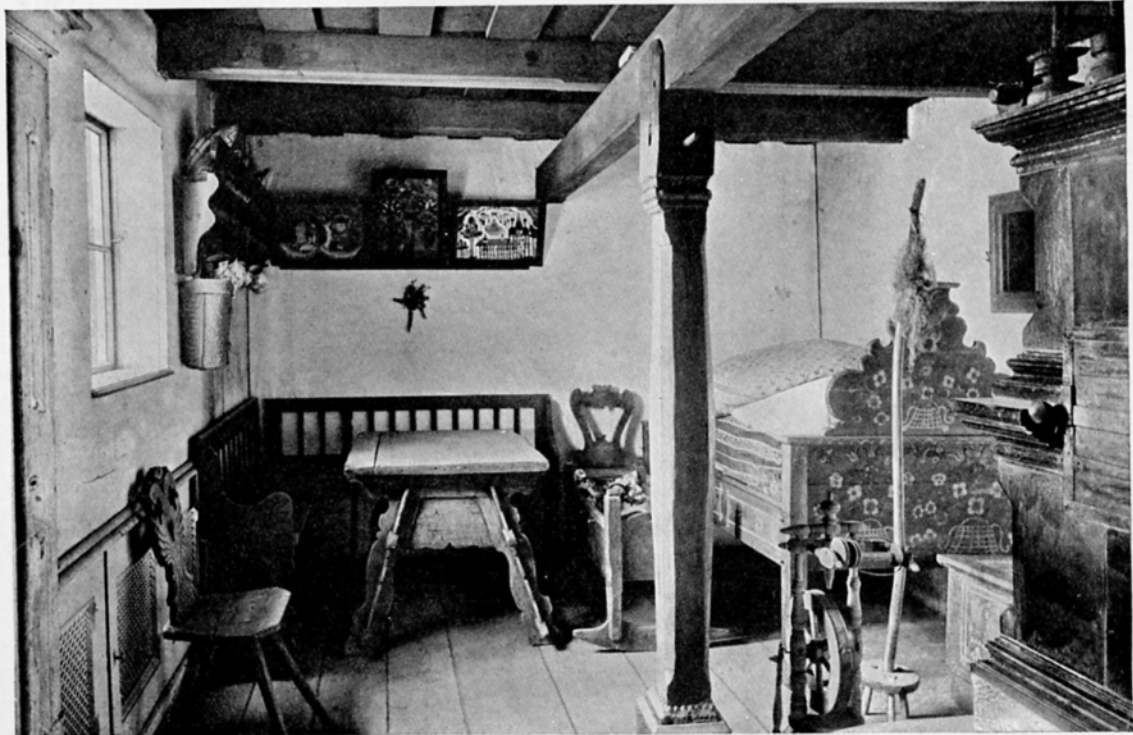


300 PEASANT'S DRESS, FROM HORITZ

MORAVIA



301 PEASANTS' COTTAGES IN THE HANNA DISTRICT



302 INTERIOR OF A PEASANT'S COTTAGE
(By permission of Messrs. Gerlach & Wiedling)

MORAVIA



303 & 304 EARTHENWARE PLATES



305 TO 308 EARTHENWARE BEER JUGS



309 EARTHENWARE BEER JUG



310 TO 313 GROUP OF POTTERY

MORAVIA.



EARTHENWARE POTTERY
IN THE ERZHERZOG RAINER-MUSEUM, BRÜNN.

MORAVIA



318 TO 320 EARTHENWARE JUGS



323 PEWTER CUP OF A
NAPPERS' GUILD



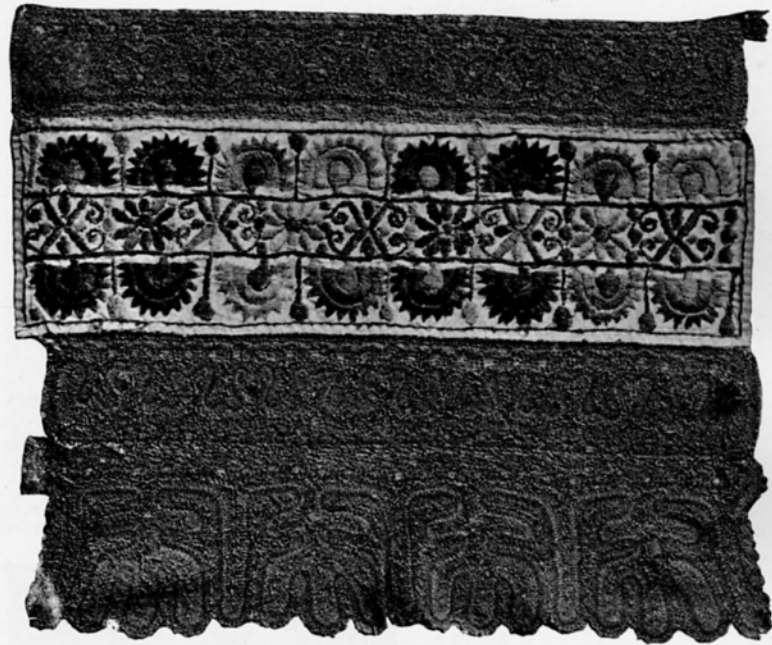
322 PEWTER SIGN OF A
TAILORS' GUILD



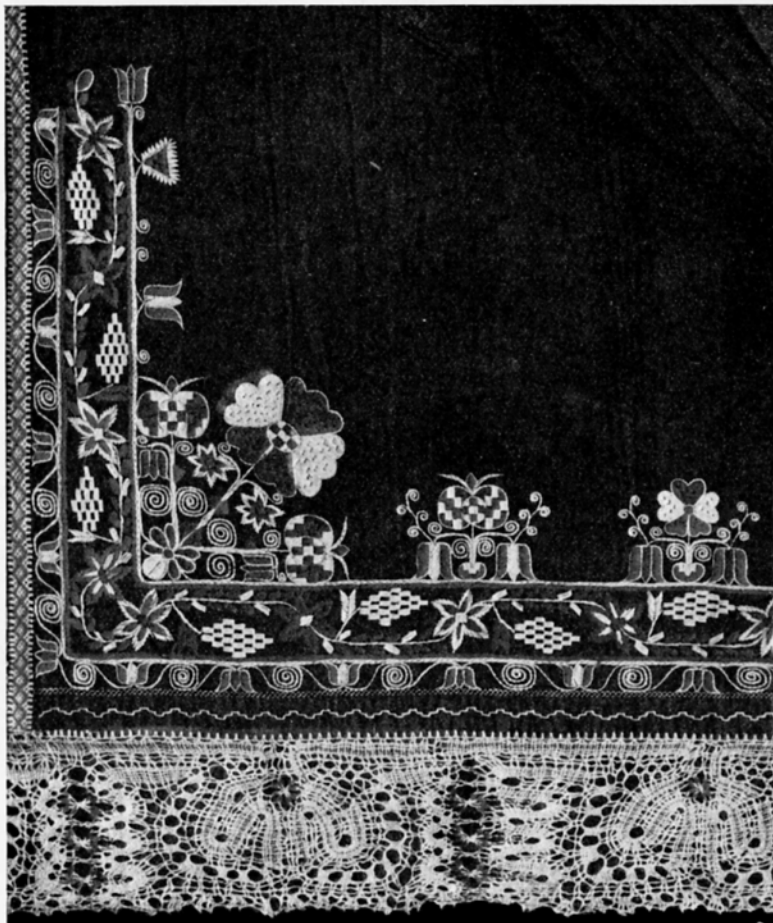
321 EARTHENWARE BEER JUG



324 EARTHENWARE PLATE



325 EMBROIDERED END OF
BRIDE'S HEAD-SCARF (ŠATKA)
FROM LANDSHUT



326 EMBROIDERED CORNER OF
APRON WITH LACE BORDER

MORAVIA



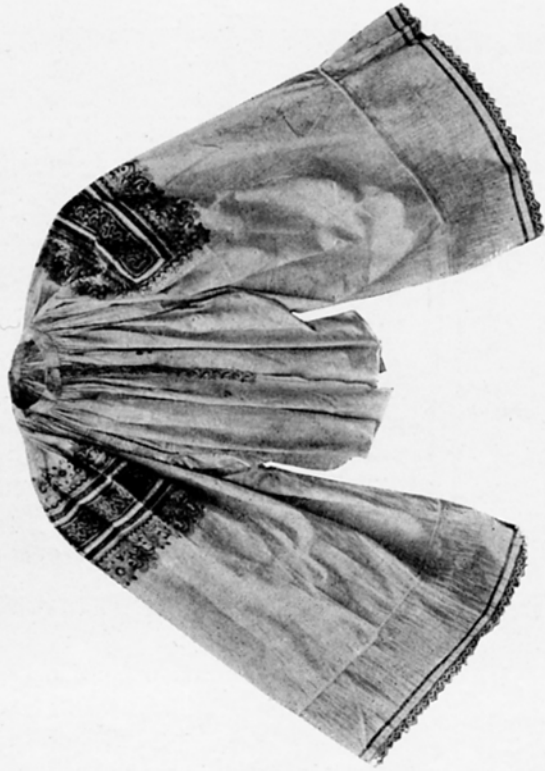
327 EMBROIDERED CAP



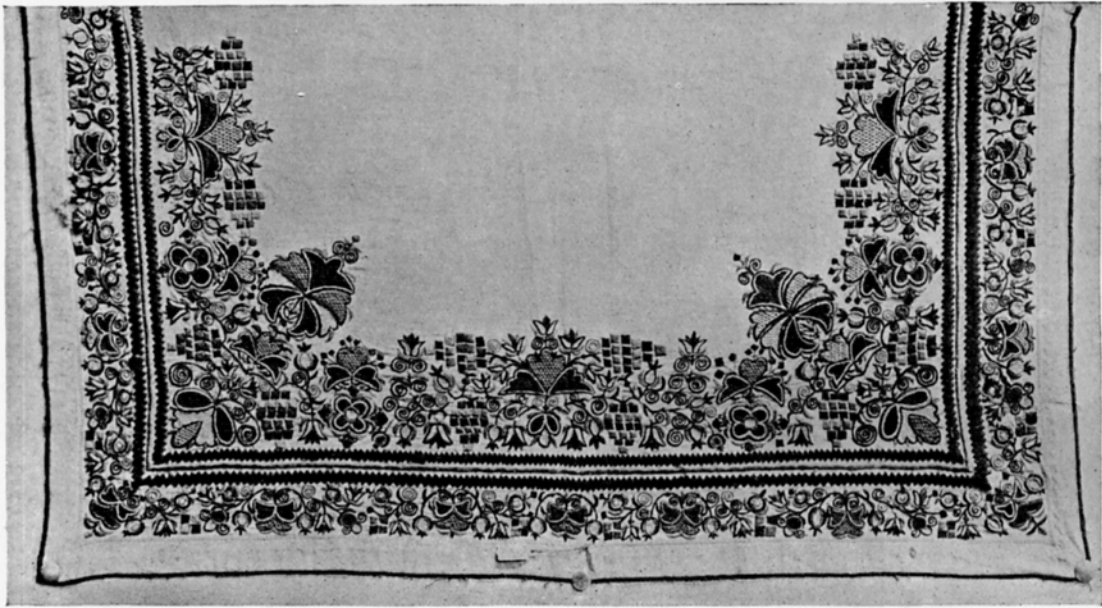
328 EMBROIDERED CAP



329 CAP WITH DRAWN-THREAD INSERTION



330 MAN'S EMBROIDERED BLOUSE

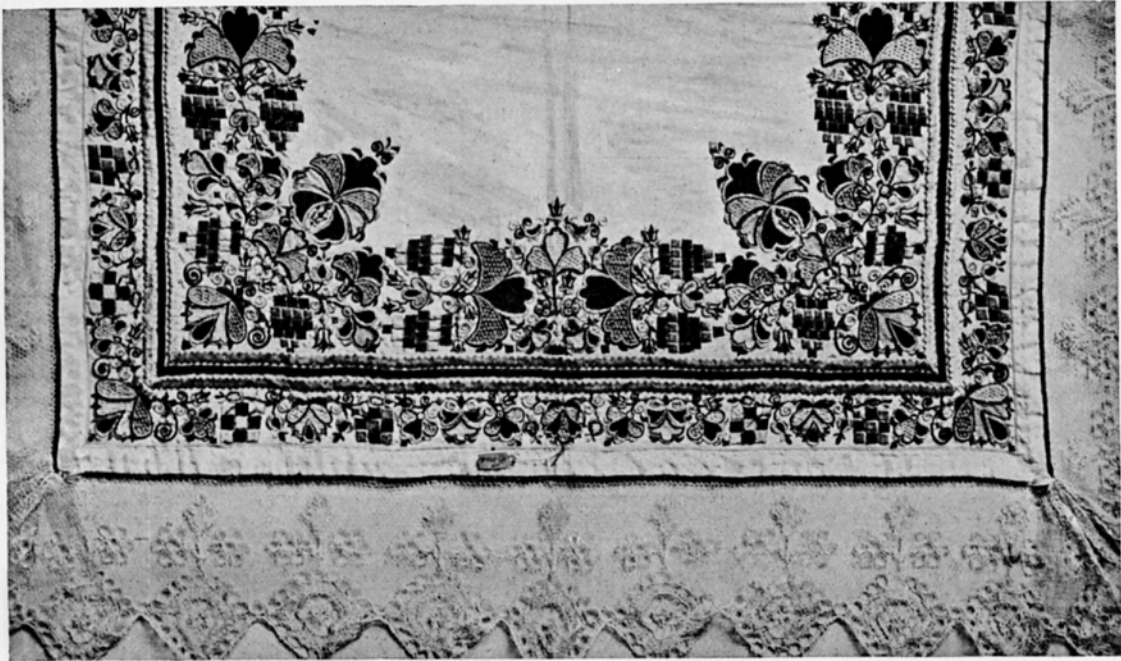


331 GIRL'S COLLAR EMBROIDERED IN COLOURED SILKS ON HOME-SPUN LINEN, FROM LANDSHUT

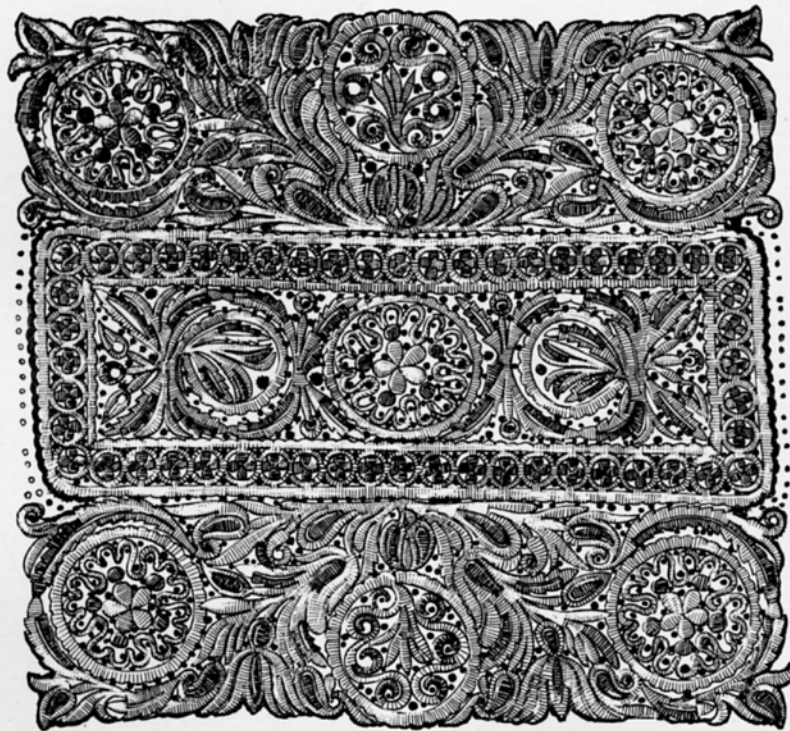


332 EMBROIDERED END OF BRIDE'S HEAD-SCARF (ŠATKA)

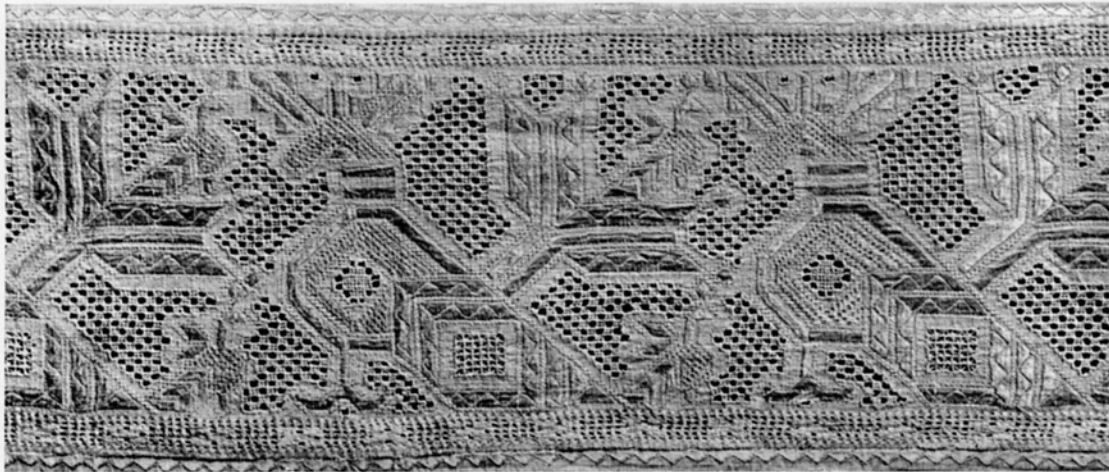
MORAVIA



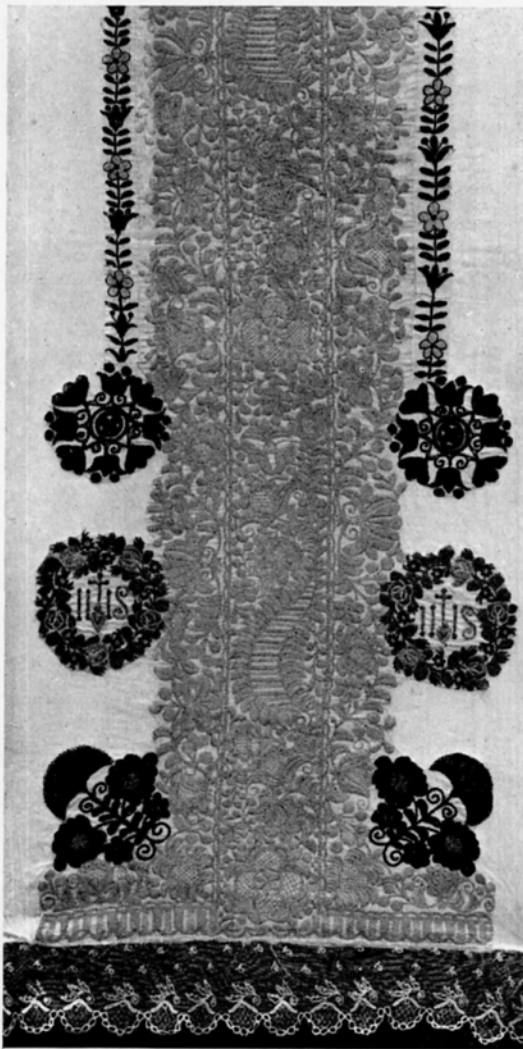
333 GIRL'S COLLAR EMBROIDERED IN COLOURED SILKS ON HOME-SPUN LINEN



334 SLEEVE BAND EMBROIDERED IN GOLD, SILVER AND BLACK THREAD



335 LACE BORDER OF CHRISTENING-SHAWL (UVODNICE)



336 END OF EMBROIDERED CHRISTENING-SHAWL (UVODNICE) WITH LACE BORDER



337 END OF EMBROIDERED HEAD-SHAWL WITH LACE BORDER