

MORAVIA



MARRIED COUPLE FROM BIENZ



UNMARRIED COUPLE FROM DÜRNHOLZ



UNMARRIED COUPLE FROM TOBITSCHAU

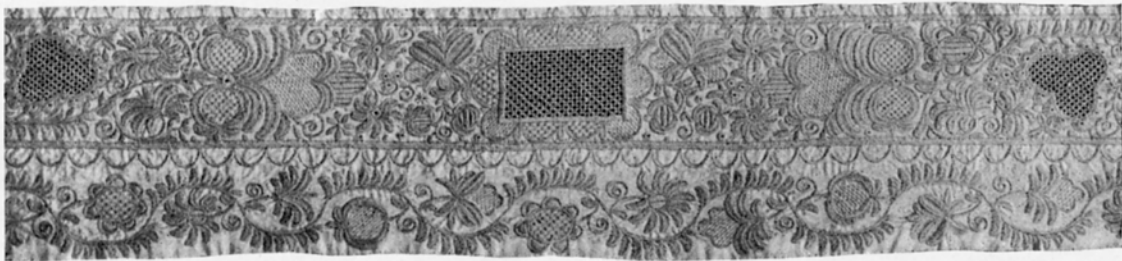


UNMARRIED COUPLE FROM THE HANNA DISTRICT

MORAVIA



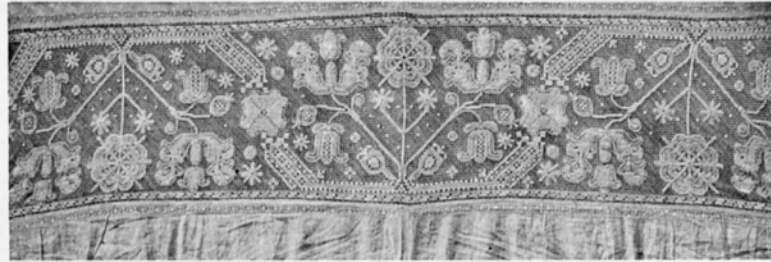
342 NEEDLE-POINT LACE



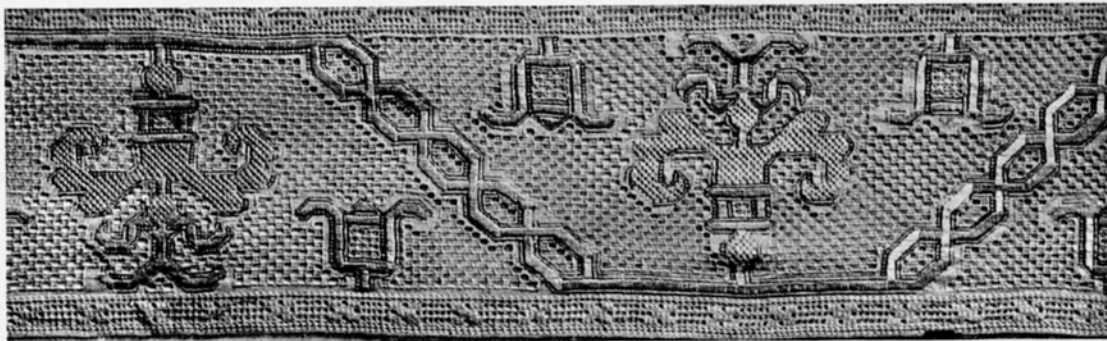
343 EMBROIDERED BORDER OF CHRISTENING-SHAWL (*UVODNICE*)



344 EMBROIDERED APRON WITH LACE BORDER



345 & 346 LACE BORDERS OF BEDCURTAINS



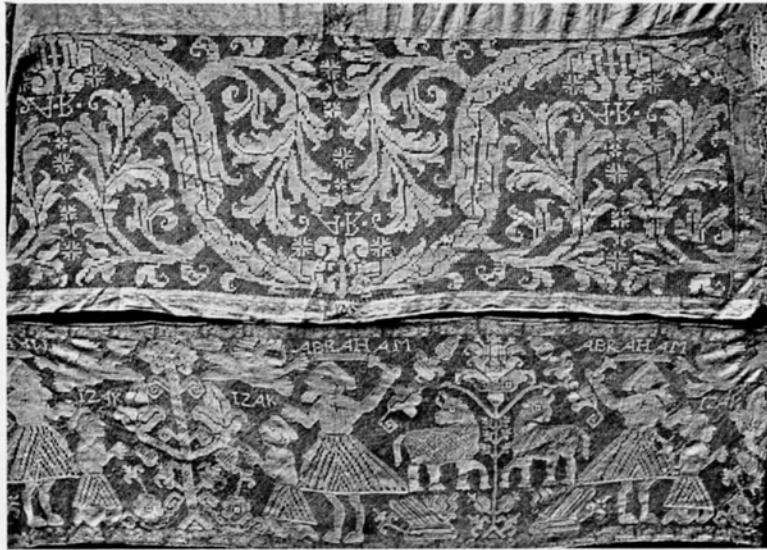
347 DRAWN-THREAD BORDER OF CHRISTENING-SHAWL (UVODNICE)



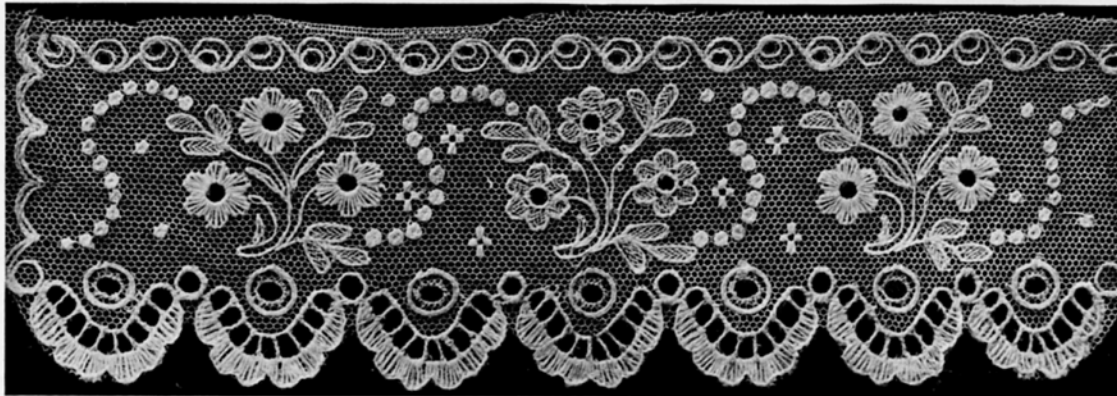
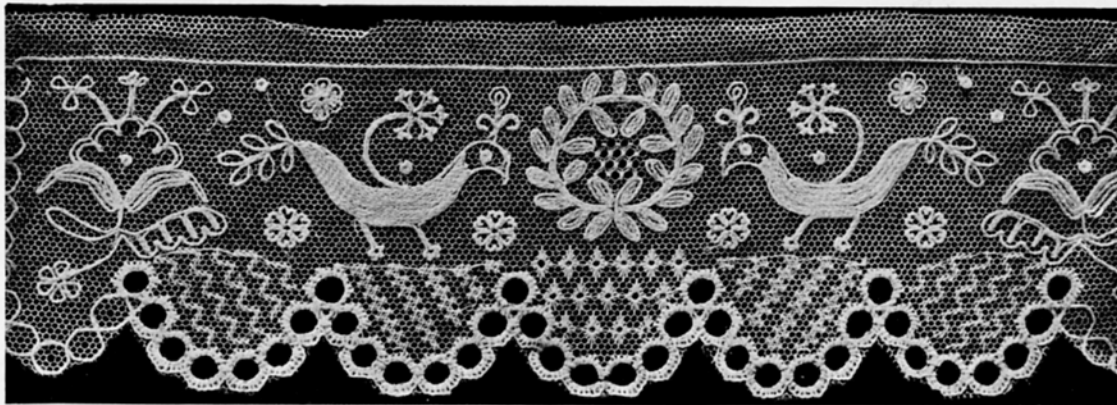
348 EMBROIDERED BORDER OF BEDCURTAIN

MORAVIA





350 & 351 LACE BORDERS FOR CHRISTENING-SHAWLS (UVODNICE)



352 & 353 LACE BORDERS FOR CAPS

MORAVIA



UNMARRIED COUPLE FROM UNGARISCH-HRADISCH



UNMARRIED COUPLE FROM WALLACHIAN-MESERITSCH



UNMARRIED COUPLE FROM UNGARISCH-HRADISCH



UNMARRIED COUPLE FROM IGLAU

MORAVIA



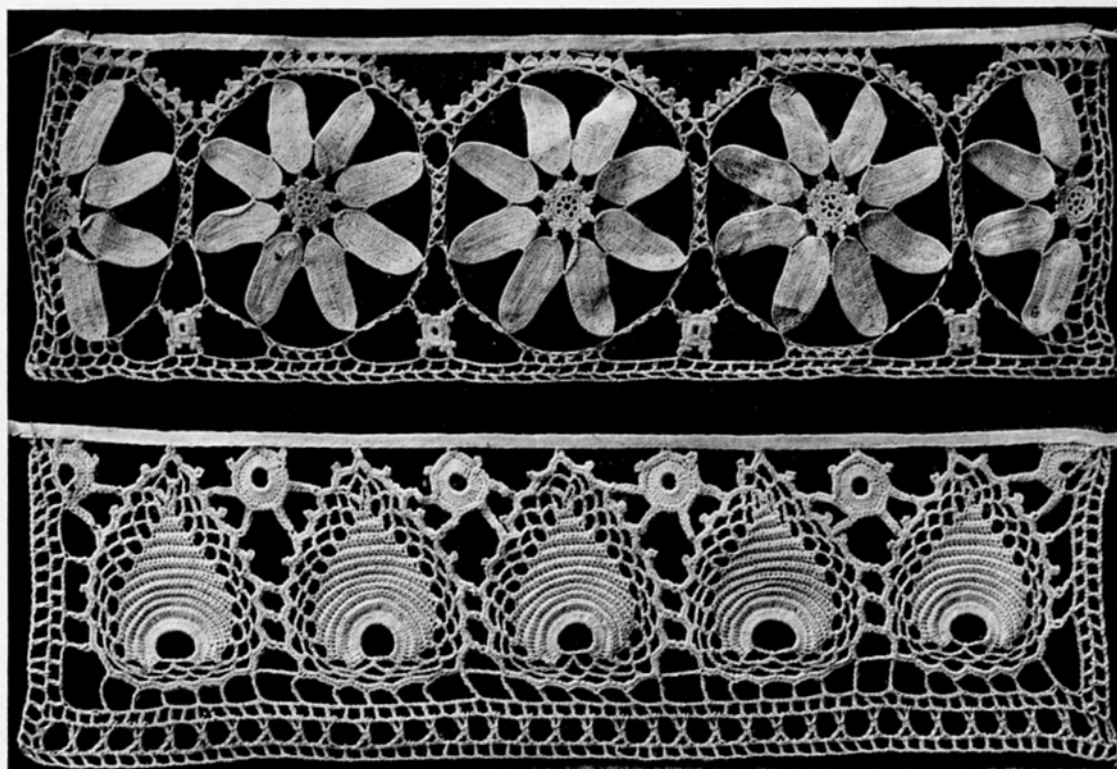
358 PEASANT WOMEN IN CHURCH DRESS, FROM ROHATETZ



359 PEASANT WOMEN, FROM TEŽOR

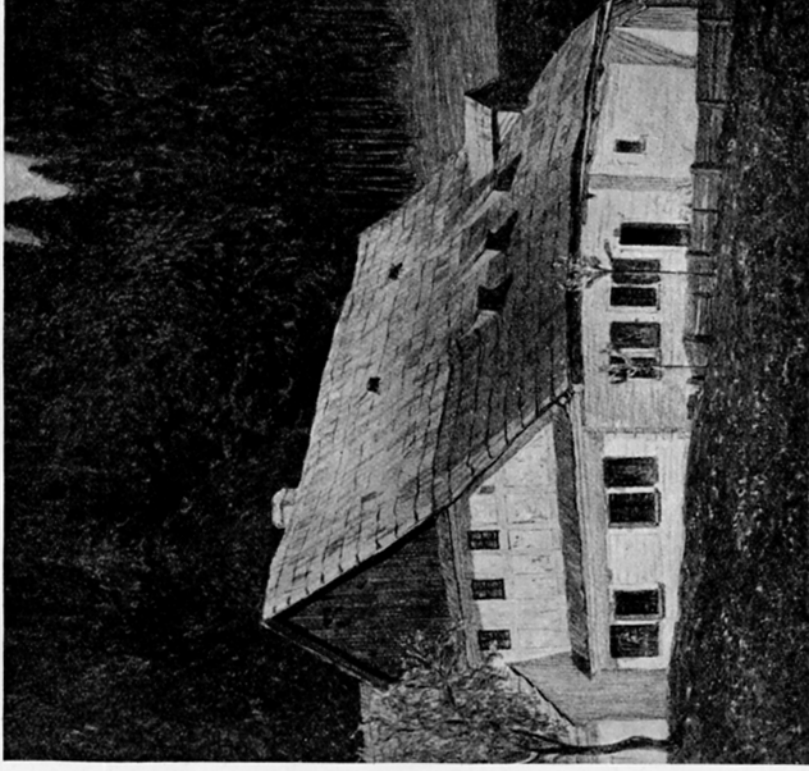
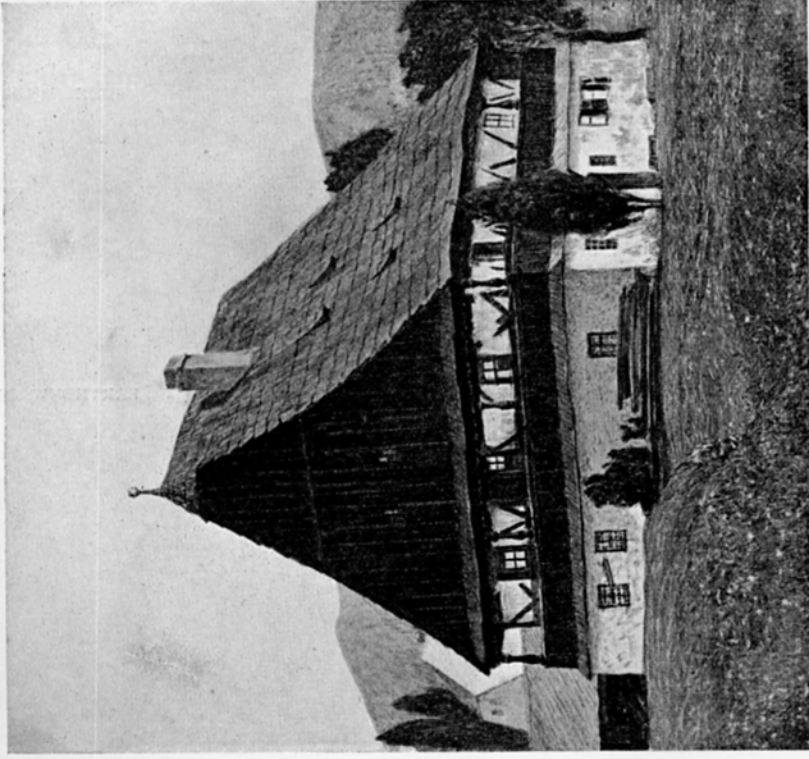


360 MORAVIAN PEASANT'S BRIDAL DRESS



361 & 362 CROCHET LACE FROM SILESIA

SILESIA



363 & 364 PEASANTS' HOUSES AT KARLSTAL (BUILT 1754) AND
LUDWIGSTAL (BUILT 1717). FROM WATER-COLOUR DRAWINGS
BY A. ZDRAŽILA

SILESIA



365 EARTHENWARE JUG



366 EARTHENWARE PLATE



367 EARTHENWARE JUG



368 EARTHENWARE JUG



369 EARTHENWARE HANGING-LAMP



370 EARTHENWARE
"PUZZLE-JUG"



371 EARTHENWARE FONT



372 EARTHENWARE WINE
JUG

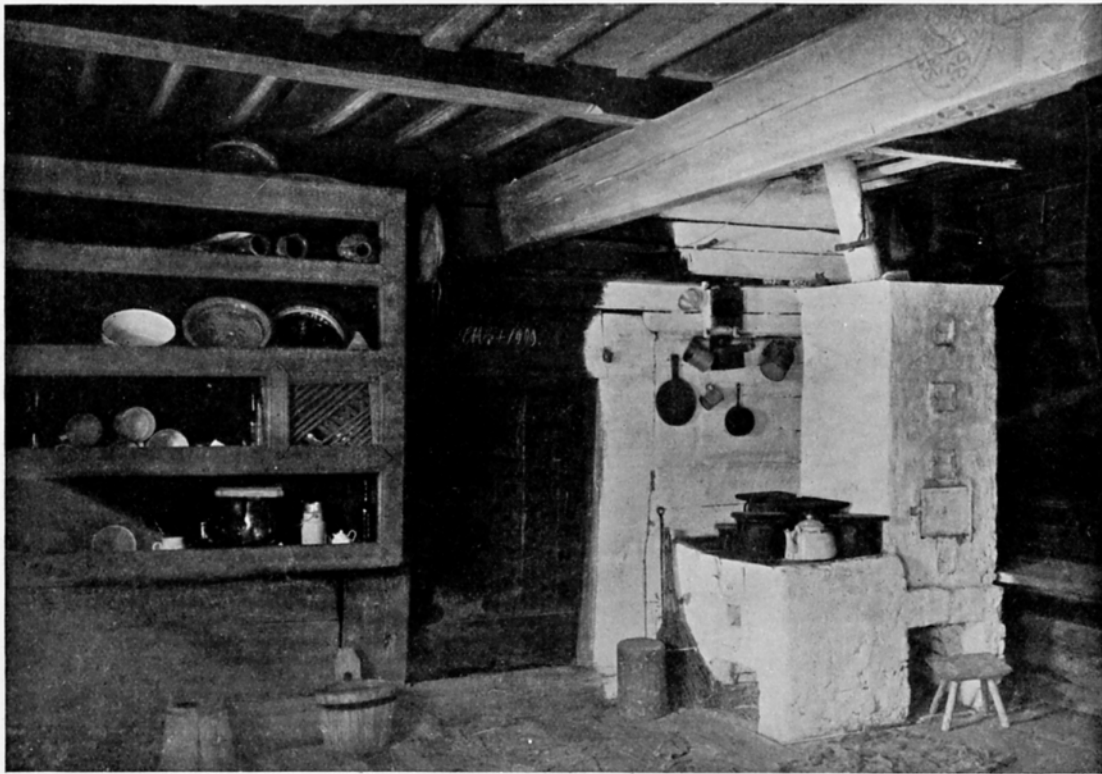


373 EARTHENWARE JAR

GALICIA

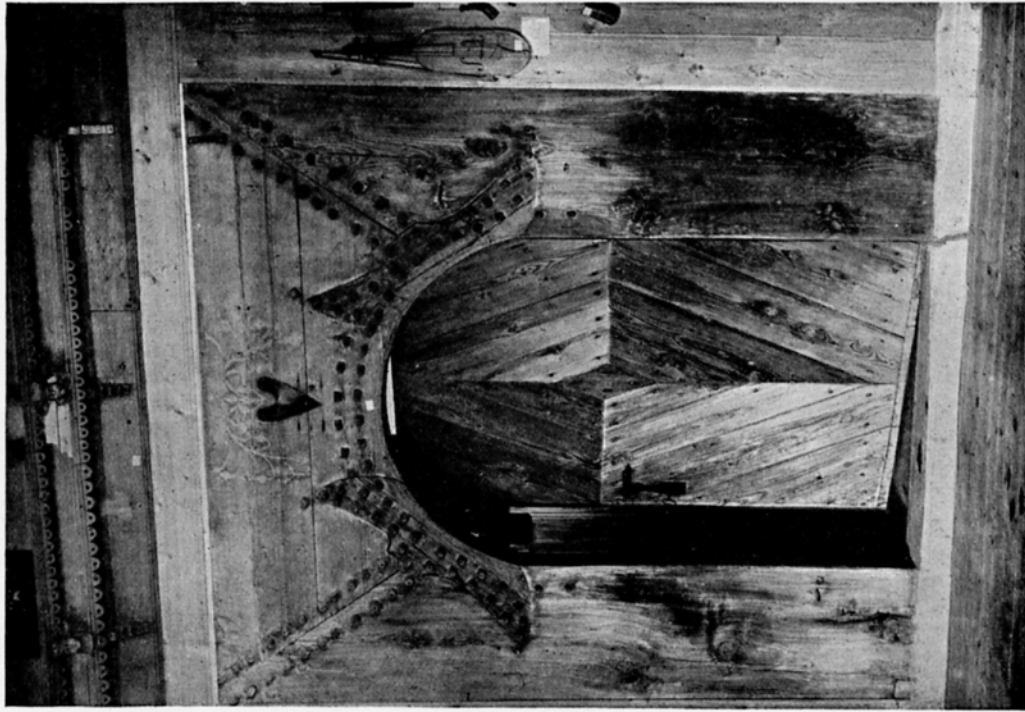


374 PEASANT'S HOUSE IN KOSCIELISKO

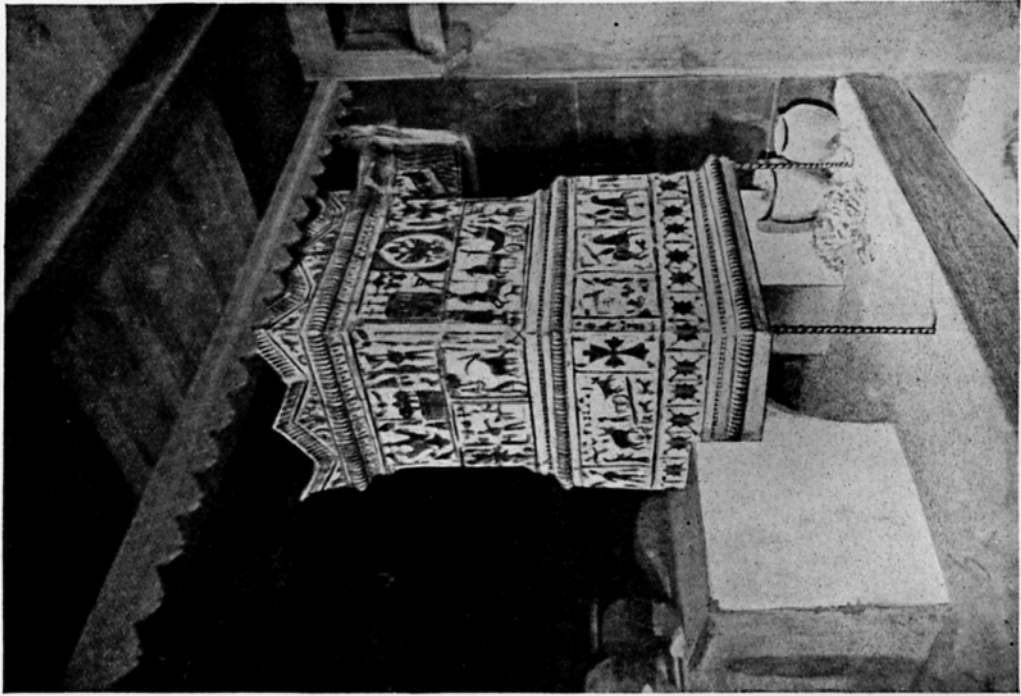


375 INTERIOR OF A PEASANT'S HOUSE IN ZAKOPANE

GALICIA



376 ENTRANCE DOORWAY IN ZAKOPANE

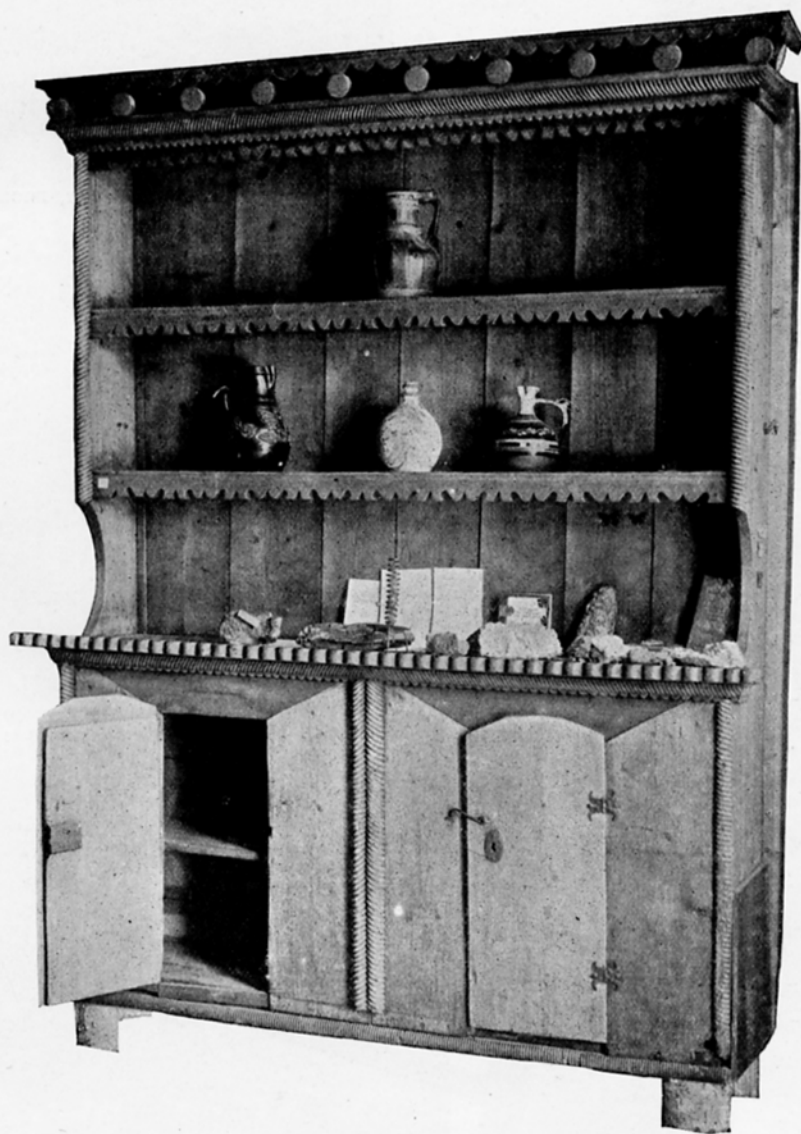


377 TILED STOVE, FROM JAWOROW

GALICIA



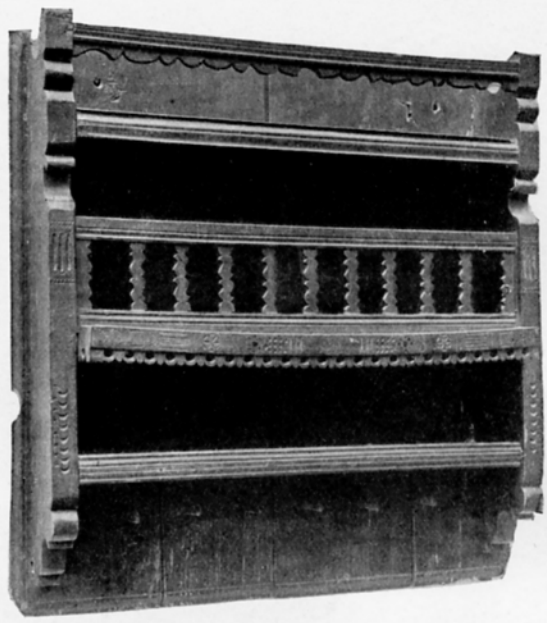
378 CARVED SPOON-RACK, FROM ZAKOPANE



379 CARVED DRESSER, FROM ZAKOPANE



380 CARVED CHAIR, FROM ZAKOPANE

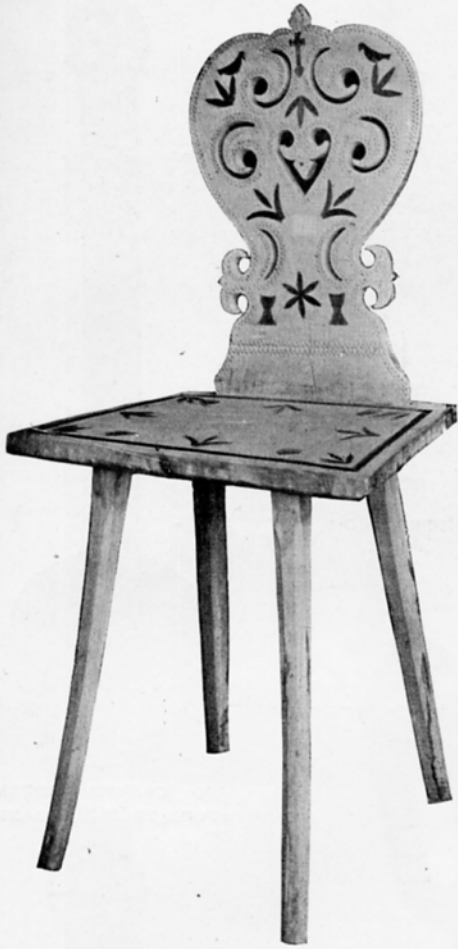


381 PLATE AND SPOON-RACK, FROM ZAKOPANE



382 CARVED TABLE, FROM ZAKOPANE

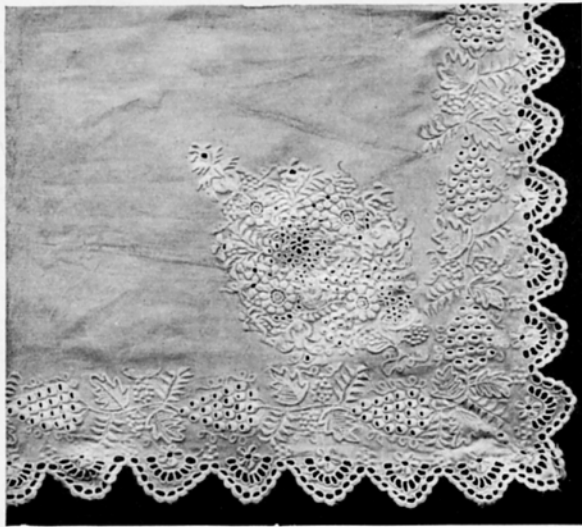
GALICIA



383 CARVED AND PAINTED CHAIR, FROM ZAKOPANE



384 CLAY PIPE WITH METAL MOUNT



385 EMBROIDERED CORNER OF HEAD-SHAWL



386 CARVED AND PAINTED CHAIR, FROM ZAKOPANE