

**CONTEMPORARY  
LINENS**

By

ELMER WALLACE HICKMAN

# TABBY TALK

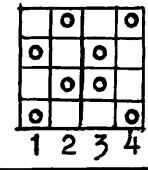
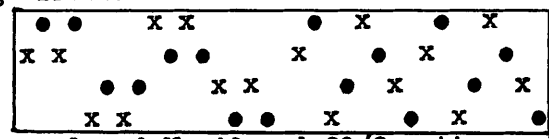
Warping instructions for Nos. 25,26,27,and 28.All 4 fabrics are woven on the same warp.  
 WARP: Lily's No.10 Perle cotton: P=Pink 1262, O=Chartreuse 1462, Y=Yellow 1459, B=Blue 993, A=Aqua 475. All No.10 Perle is used single through the heddles.  
 Robin & Russ' 20/2 Egyptian cotton: O=Orange,X=Princeton Orange, D=Diadem, B=French Rose, L=Lilac. The 20/2 cotton is always used two ends in a heddle, as OX,DD,LL, etc.  
 Searle's 30/3 Black Egyptian cotton, always threaded single through the heddles, and is designated in the "Warp Order" below by a dash(-), after each colored thread combo as OD-P-,etc. Use 8 threads of Twill for selvages, in any of the yarns used.

WARP ORDER: (to simulate Random threading).....Total of 100 heddles for the warp order below.  
 C-C-P-B-DR-Y-LL-P-A-OX-Y-C- (24 heddles) DR-B-P-C-LL-A-OX-P-O-Y-DD-B- (24 heddles.)  
 DR-LL-Y-A-P-OX-DR-C-Y-A-P-Y- (24 heddles) LL-A-OX-P-C-Y-P-B-DR-A-LL-C-P-OX- (28 heddles).

SLEYING: In a No. 15 reed sley contents of 2 heddles through one reed dent. (One end of the Black and one end of colored No.10 Perle cotton through a dent, but one end of Black and 2 ends of 20/2 colored cotton in one reed dent.)

The wefts and treadling directions are below the woven samples on another sheet of the folio.

Draft and Tie-up for Nos.25,26,27, and 28



•=30/3 Black yarn. x=the colored No.10 and 20/2 cottons.

The fabrics in this folio,CONTEMPORARY LINENS, are distinctive and exhilarating. They were designed principally for place mats, but some of the fabrics may be used for other projects. The colors are appealing and would help any weaver get out of the rut of using one color warp and weft constructions.If the metallics are objectionable they may be omitted and linen yarns may be substituted. The warping orders given are those I used to make the warps. For that reason you will often find the warp divided into groups, for easier warping. Weavers, however, may devise their own methods of warping. Borders, for most of the fabrics shown, may be woven with Tabby treadlings.The shots of weft may be varied,employing only colors that were used in the textiles. Weave headings with finer yarn than is generally employed in the fabrics ,omitting any metallics. Many color combinations may be substituted for the color scheme shown in any particular fabric. A color scheme from one sample may be transplanted to another set-up and developed with varied treadlings, which are to be found throughout the folio.

YARN SUPPLY SOURCES. CHARLES Y. BUTTERWORTH 2222 East Susquehanna Ave., Philadelphia 25,Pa. Margo Snyder THE YARN MART 1149 Robertson Blvd., Los Angeles 35, Calif. (Excellent selection of colors and many sizes of Knox linen yarns.) LILY MILLS CO., Shelby, N.C. CONTESSA YARNS Bbx 336,Ridgefield, Conn. FRANK KOUBLE P.O. Box 36, Cumberland, R.I. ROBIN & RUSS HANDWEAVERS 632 Santa Barbara Street, Santa Barbara, Calif. (great variety of yarns including Ramie,Silk, Linen,Metallics,etc.) GRANT HANDWEAVING SUPPLY CO., Provo, Utah, (extensive stock of yarns). SEARLE GRAIN CO., 318 Grain Exchange Bldg., Winnipeg,Man.,Canada. (great selection of yarns including a nice variety of Knox 25/2 linens), YARN ARTS GUILD, Whitestone L.I., New York. SOUTH LANDING CRAFT CENTRE, Queenston, Ont., Canada. LILLIAN HJERT, 2635-29th Ave., West Seattle 99, Wash. Rose Mills, O Street & Indiana Ave., Philadelphia 34, Pa. LEE WARD, Elgin, Illinois (send for free catalogue). ROBISON\*ANTON TEXTILE CO., 434 W. 52nd St., West New York, New Jersey. TROY YARN CO., Pawtucket, R.I. Tinsel TRADING Co., 7 W.36th St., New York 18,N.Y.

I would like to thank for their help in weaving the yardages, Mrs. Jane Littlewood, Mrs. Ella S. Bolster, Mrs. Louise Cooley, Mrs. Paul Henshaw, Mrs. Jeanette MacMillan and Mrs. George D. Pence. Thanks also to Art McNary for his assistance.

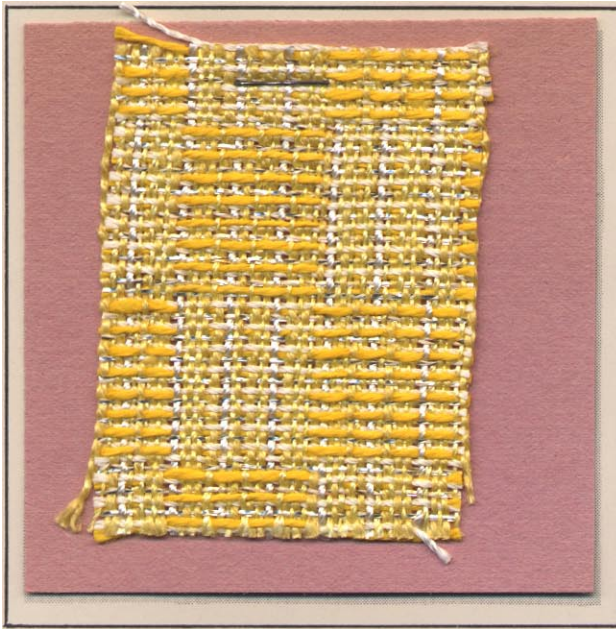
CONTEMPORARY LINENS mailed in the U.S.A and Canada for \$6.95, postpaid. No C.O.D. orders.

Elmer W. Hickman, R.D. 2, Emlenton, Pennsylvania.

STILL AVAILABLE: FABRICS FOR THE HOME, with 28 woven samples and instructions, \$7.50, P.P.  
 TOWN AND COUNTRY TWEEDS, 24 woven samples with instructions, \$6.95, P.P.  
 Natural Yarn Fabrics, 18 woven samples with instructions, \$4.95, P.P.  
 MODERN DRAPERY AND UPHOLSTERY, 18 woven samples with instructions, \$4.95, P.P.



No. 1 DAFFODIL



Standard Tie-up

4 4 4 4 4 4 4 4	3 3 3 3
3 3 3 3 3 3 3 3	2 2 2 2 2 2 2 2
2 2 2 2	1 1 1 1 1 1 1 1

For right and left borders use the following threading: 1,2,1,2,3,4,3,4,3,2.

WARP: Knox 40/2 Yellow linen, 570  
 Grant's 20/2 Jasmine linen, 70067  
 Butterworth 3-ply White Rayon Twist  
 Warp 3 ends each of the yellow linens. These 6 threads need not be in the order of one light and one dark end, rather warp and thread the 6 ends at random, then one end of the White Rayon Twist.  
 One end in a heddle. Sley two ends of the yellow linens in a dent of a No. 15 reed, and one end of the Twist in a dent.

WEFT: S= Grant's 10/2 Spanish Yellow linen, 70068 (or Ederlin 12/2 Buttercup linen).  
 W= Butterworth White Rayon Twist.  
 M= Gold and Silver 1/64 supported metallics both wound on the same bobbin.

TREADLING: (read across the page)  
 First row of squares: Har. 1&2-S, 2&4-W, 1&3-M. Repeat until the pattern blocks are squared.  
 Second row of squares: Har. 3&4-S, 2&4-M, 1&3-W. Square the blocks. Notice that the "M" and "W" wefts are reversed in the second row of pattern. (Knox linens-THE YARN MART)

No. 2 SPRING BLOOMS



Sel.

M	X	X	TT	M
M	MM	MM	XXM LL	M
M	M	MM	LLM LL	M
M	X	X	M	M

Standard Tie-up

WARP ORDER: L= 4 ends Ederlin 20/2 Lemon linen  
 T= 2 ends Butterworth White 3-ply Rayon Twist  
 M= 2 ends Ederlin 20/2 Lime linen  
 X= 2 ends Green Rayon Twist, R-7 (Blum)  
 L= 2 ends Ederlin 20/2 Lemon linen  
 M= 4 ends Ederlin 20/2 Lime linen  
 X= 2 ends Green Rayon Twist, R-7 (Blum)  
 M= 4 ends Ederlin 20/2 Lime linen  
 X= 2 ends Green Rayon Twist, R-7  
 Total of 24 warp ends in unit

One end in a heddle. (Use 2 heddles for "TT", and 2 heddles for "XX".) Sley a No. 12 reed with 2 ends in a reed dent.

WEFT: M= Ederlin 20/2 Lime linen, like warp.  
 B= Kouble's Green/Silver "Splash" rayon yarn.  
 C= 1/64" supported Silver Metallic

TREADLING: (read across the page)

Har. 1&3-M, 1&2-B, 1&3-C.  
 Har. 2&4-M, 3&4-B, 2&4-C.

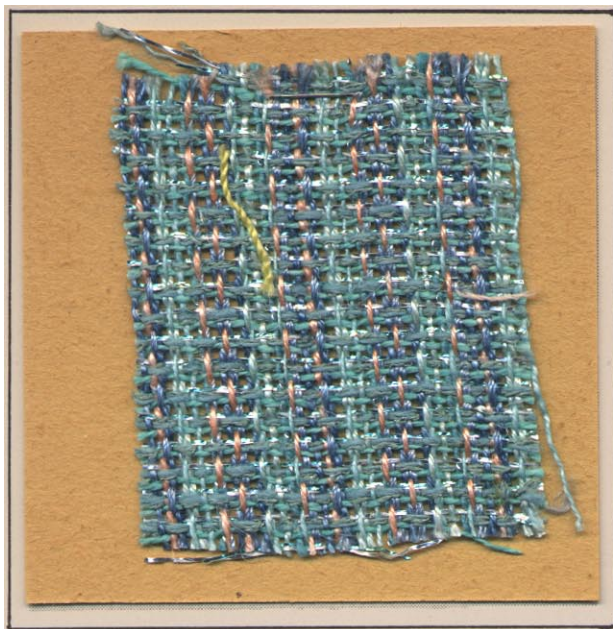
Beat well enough to approximate the texture shown in the woven sample.

All Ederlin linens supplied by Butterworth.

PRINTED IN THE U.S.A.



No. 3 STARLIGHT



Sel.		Sel.	
4	X        L	4	
3	L   L   RR   X    L	2	
2	B   T            X   L   L	3	
1	X                            T	1	

Standard Tie-up

WARP: L= 6 ends 20/2 Lt. Blue Knox linen, 531  
 T= 2 ends Kouble's Turquoise/Silver cotton  
 R= 2 ends 3-ply Blue Rayon Twist, 345 (Blum)  
 B= 1 end Lt. Blue linen boucle (Btwh)  
 X= 4 ends 20/2 Ederlin Dream Blue linen (Btwh)  
 Total of 15 warp ends in unit.

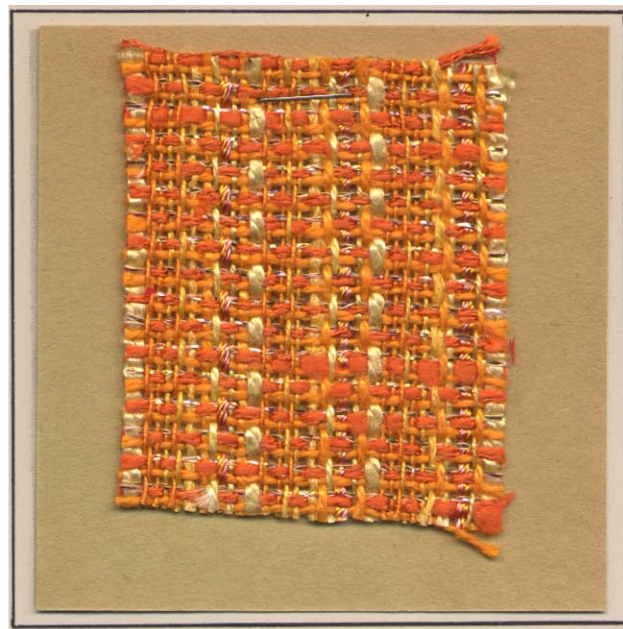
One end in a heddle. Sley a No. 12 reed with one end of "B" in a dent, but sley all other yarns 2 ends in a reed dent. (Use 2 heddles for "RR", but one reed dent.)

WEFT: L= Light Blue 20/2 Knox linen, 531.  
 M= 1/64" Lt. Blue supported metallic yarn.  
 F= Butterworth's Sky Blue Fraille.

TREADLING: (Read across page)  
 "A" Har. 1&3-L, 1&2-M, 1&3-L.  
 "B" Har. 2&4-L, 3&4-F, 2&4-L.

Beat well so that the small square openings are squared, trying not to get them any larger than shown in the woven sample.  
 NOTE. It is important that the 3 shots of "A" and "B" groups be brought together with the beater, like one heavy thread, more so than shown in the woven sample. PEACH GLOW sample will show you what I mean. This gives a more solid effect.

No. 4 ORANGE ICE



				Sel.	
B	G	O	Y	Y	
	RR	O	O	Y	
	K	V	Y	Y	
X	X	O		Y	

Standard Tie-up

WARP ORDER:

Y= 2 ends Grant's 20/2 Yellow linen, 70068  
 O= 4 ends Grant's 20/2 Orange linen, 70069  
 V= 1 end Yellow Spun Viscose (Btwh or Robin/Russ)  
 X= 2 ends Grant's 10/2 Orange Linen, 70069  
 R= 2 ends 3-ply Burnt Orange Rayon Twist (Blum)  
 K= 1 end Knox 20/2 Yellow, 570 (Yarn Mart)  
 B= 1 end Contessa's Yellow linen Boucle  
 G= 1 end Knox 30/2 Gold linen, 573 (Yarn Mart)  
 Total 14 warp ends in unit.

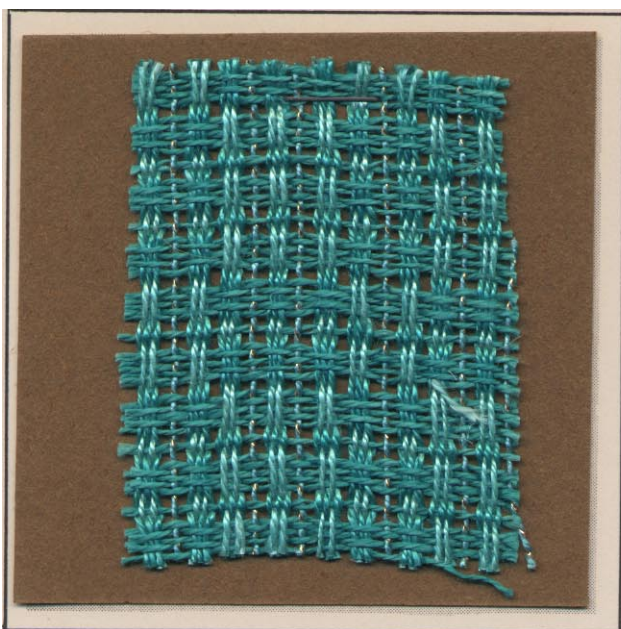
One end in a heddle. No. 12 reed. Sley "V" and "B" each in a reed dent. All other yarns are sleyed 2 ends in a reed dent.

WEFT: M= 1/64" Gold and Lt. Rust supported metallics both wound on the same bobbin.  
 N= Kouble's Orange nubby Spun Rayon and Pumpkin Fraille (Butterworth) both wound on the same bobbin.  
 X= Grant's 10/2 Orange linen, like warp

TREADLING: (read across page)...  
 Har, 2&4-M, 1&4-N, 2&4-X.  
 "    1&3-M, 2&3-N, 1&3-X.

Beat to approximate the texture of woven sample

No. 5 TURQUOISE LACE



Sel.	Standard Tie-up		Sel.
4	L L L L		4
3	D D D D D D	T T	3
2	T	D D D D D D D D	2
1		L L L L L L	1

WARP: L= Knox 20/2 Light Jade linen, 513.  
 T= Kouble (or other sources) Turquoise/Gold cotton.  
 D= (all other heddles) Knox 20/2 dark Jade linen No. 515.

One warp end in a heddle. Sley a No. 12 reed with two warp ends in a dent-24 ends to inch.

WEFT: Knox 20/2 dark Jade linen No. 515.

TREADLING: (read across the page)  
 Pattern "A". Har. 1&3, 1&2, 1&3, 1&2, 1&3, 2&4. Repeat the treadling as given three times, but omit the last 2&4 shot to change to the next pattern unit.

Pattern "B". Har. 2&4, 3&4, 2&4, 3&4, 2&4, 1&3. Repeat the treadling as given twice, but omit the last 1&3 shot to change to the next pattern unit.

Lay the 6 shots into place with the beater, but do not beat with the beater.  
 (Knox linens from THE YARN MART)

No. 6 TWEED TONE



G	G	R	W	G	O	G
W		W	G	O	R	W
O	R	W	G	G	G	R
W	G	O	G	W	W	G

Standard Tie-up

WARP ORDER:

G= 2 ends 20/2 Knox Gold linen, 573.  
 R= one end 20/2 Knox Rust linen, 564.  
 G= one end 20/2 Knox Gold linen, 573.  
 W= one end 20/2 Knox White linen.  
 O= one end 20/2 Knox Antique Gold linen, 574.  
 W= end end 20/2 Knox White linen.  
 Total of 7 warp ends in unit.

One end in a heddle. Sley a No. 12 reed with two warp ends in a dent.

WEFT: A= Contessa Beige/White Rayon Novelty.  
 B= Contessa Orange/Brown/Natural Rayon/Cotton.  
 C= Kouble Tan/Gold cotton.

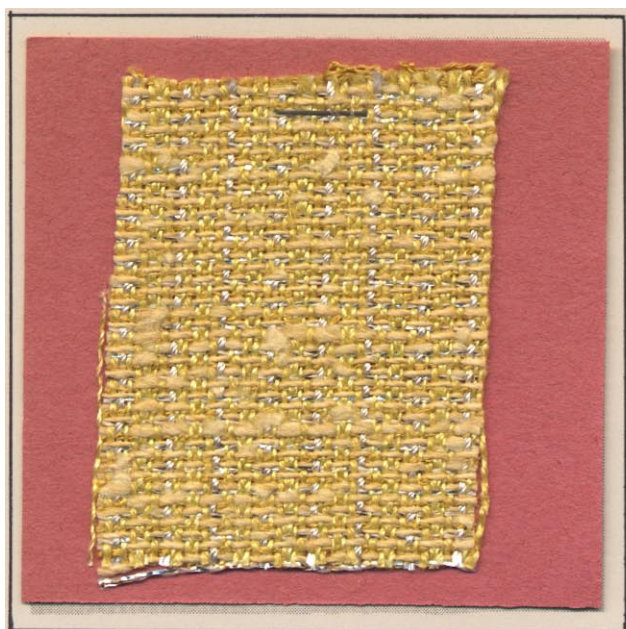
TREADLING: (read across the page)  
 Har. 1&2-B, 3&4-A, 2&3-C, 1&4-B, 1&2-A, 3&4-C, 2&3-B, 1&4-A, 1&2-C, 3&4-B, 2&3-A, 1&4-C.

Beat to approximate the texture of the woven sample.

(Knox linens from THE YARN MART)



No. 7 GOLD TONE



M		T	Y
Y Y	M Y	M M	
M M	T Y M	Y Y	
T	Y MY	M	

Standard Tie-up

WARP: Alternate 3 ends of 20/2 Grant's 60067 Jasmine linen=M, and 3 ends 40/2 Knox yellow linen No. 570=Y, as shown in draft above, then one end Butterworth's 3-ply White Rayon Twist.

One end in a heddle. Sley a No. 15 reed as follows: two ends of the yellow linens in a reed dent, and one end of the white Rayon Twist in a dent.

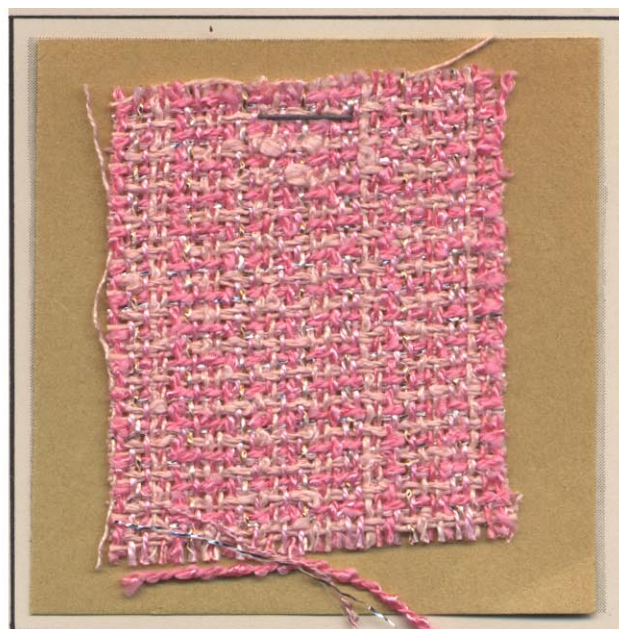
WEFT: G=Kouble Nubby pale Gold Spun Rayon yarn. F= Butterworth No. 3501 dark Yellow Fraille yarn. M= Gold and Silver 1/64 supported metallic yarns wound together on the same bobbin. (One or two strands of Fraille yarn may be substituted for the metallic yarns, if desired.)

TREADLING: Har. 1&2-G, 1&3-F, 3&4-G, 2&4-M.

Two other appealing fabrics may be had by the following treadlings: "A" Tabby treadling with the 3 weft yarns in order given above, regardless on which sheds the yarns come.

"B" Har. 1&3-G, 1&2-M, 1&3-G. Har. 2&4-G, 3&4-F, 2&4-G. This last "B" treadling gives an open weave.

No. 8 PINK CHRYSANTHEMUM



	← 18 ends →					
	G		P	G	A	
	D K	L	R A	D P		
	L	R A	D K	L R		
etc.	P	G		K		

Standard Tie-up

WARP ORDER:

A=20/2 Ederlin Araby Rose linen(Btwh), P=20/2 Pink Ederlin Linen(Btwh), R= Pink Rayon Ratina No. 401 (Btwh), K=Knox 555 20/2 Pink linen, G= Rayon Gold Twist, 4300(Btwh), D= Knox 556 20/2 Pink linen, L= Light Pink linen Boucle, (Btwh). Total of 7 warp ends.

One end in a heddle. Sley a No. 12 reed with 2 warp ends in a reed dent. (24 ends to the inch.)

WEFT: P= Ederlin 20/2 Pink linen, same as warp. L= Butterworth Pink linen Boucle.

F/M= Butterworth Pink Fraille, wound on the same bobbin with 1/64 supported Silver metallic. R= Butterworth Pink Rayon Ratina, like warp.

TREADLING: Har. 1&2-R, 1&3-P, 3&4-L, 2&4-F/M.

Do not beat too hard.

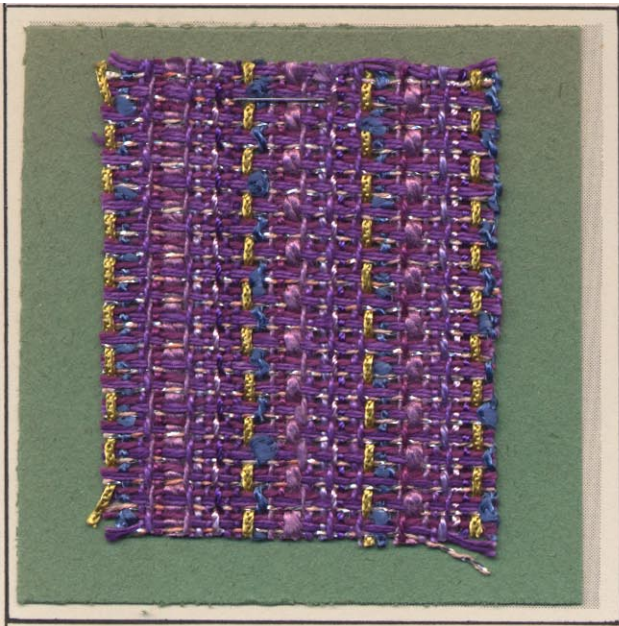
Note; The actual draft above are the 18 ends, so marked, then the draft is repeated. This is shown by the "G,D,L,etc."

("Btwh" is an abbreviation for Butterworth.)



No.9 DELPHINIUM

No. 10 LATE SUMMER



Sel.

X	O	L	P	T	L	L	X	P
R	T	P	L	X	A	G	R	P
L	P	A	G	R	P	V	P	P
G	P	P	V	P	O	L	P	P

P	A	G	P	P	V
P	P	V	X	O	L
P	O	L	R	T	P
P	T	P	L	P	A

Standard Tie-up

WARP:

- X= 1 end Butterworth Gold Chainette, 7502
- R= 1 " " No. 497 Blue Ray. Ratina
- P= 4 ends Ederlin 20/2 Lilac Linen, (Purple)
- L= 2 " Grant's 20/2 Lilac linen, 70056
- V= 1 " Orchid Spun Viscose (Butterworth)
- G= 1 " Knox 20/2 No. 4 Grape Purple linen.
- A= 1 end Knox 20/2 No. 511 Purple linen.
- O= 1 end Purple Rayon Twist (Grace Blum)
- T= 1 end Orchid Rayon Twist (Blum)

One warp end in a heddle. Sley a No. 12 reed as follows: X, R, and V yarns one end in a dent, all other yarns two ends in a reed dent.

WEFT: M= Kouble's Pink/Silver cotton, D= double strand 20/2 Purple linen like warp. S= single strand Knox 20/2 No. 4 Grape Purple linen, like warp.

TREADLING: read across page...Har. 2&4-M, 1&4-D, 2&4-S. Har. 1&3-M, 2&3-D, 1&3-S.

(Knox linens from THE YARN AMRT.)

Twill draft.

Sel.

	O	K	E	V	E
	E	M	X	K	E
	O	EK	M	M	E
etc.	M	E	K		E

Standard Tie-up

WARP:

- V=1 end Dark Green Spun Viscose, 16170 (Buttworth)
- X=1 " Butterworth Zig-Zag Ratine, No. 17480. Gold color, "Special".

K=2 ends Knox 20/2 Green linen, 523 (Hjert).

M=1 end Dark Green/gold cotton (Kouble)

E=2 ends Ederlin 20/2 Foam Green Linen (Btwh)

M=1 end Dark Green/gold cotton

Repeat the last 6 ends.

O=2 ends Ederlin 20/2 Olympic Blue linen (Btwh)

Total 16 warp ends in the unit.

One end in a heddle. (Use 2 heddles for EK.)

Sley a No. 12 reed two ends in a reed dent, except V and X which are sleyed each in a dent.

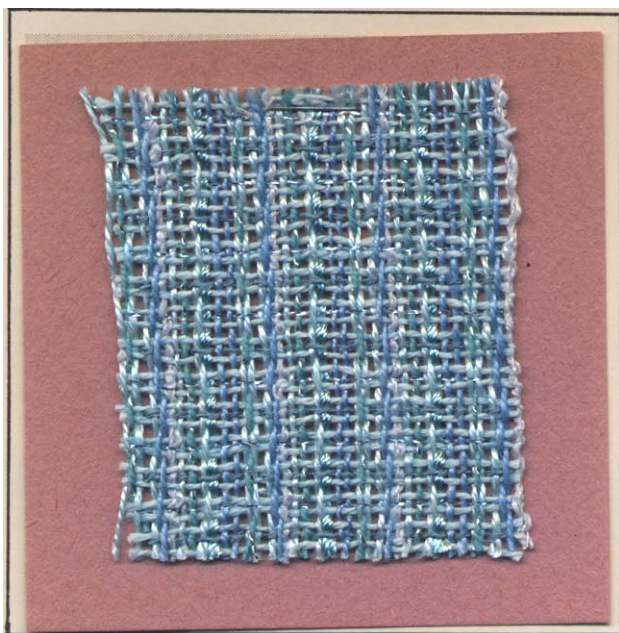
WEFT: E=2 strands of 20/2 Foam Green Ederlin linen, wound on same bobbin. M= Kouble Dark Green/gold cotton. A=2 strands of nubby Aqua rayon 16570 (Btwh) wound on same bobbin.

TREADLING; read across page...Har. 2&4-M, 1&4-E, 2&4-A. 1&3-M, 1&4-E, 1&3-A.

(Btwh. above is Butterworth abbreviated.)



No. 11 BLUE BONNET



	P		BB	P	
L	BB	F	E	F	P
O	E	F	BB	O	L
E	L		P	E	

Standard Tie-up

WARP: P=2 ends 20/2 Knox Peach linen, 547  
 BB= 4 ends 40/2 Knox Blue linen, 534  
 F= 2 ends 20/2 Knox French Blue linen, 535  
 L= 2 ends 20/2 Knox Lt. Jade linen, 528  
 O= 1 end Aqua/Silver cotton (South Landing)  
 E= 2 ends Ederlin 20/2 Lt. Blue linen, 65202  
 All warp one end in a heddle, except "BB" are threaded through one heddle. Sley a NO. 12 reed with the contents of 2 heddles. (It requires 11 reed dents to sley entire draft)

WEFT: A= Knox 20/2 Turquoise linen, 513.  
 B= Kouble's 8/1 rough Lt. Blue linen, wound on the same bobbin with Butterworth's FRAILLE Turquoise, 3506. C= Silver and Ice Blue metallics wound on the same bobbin.

TREADLING: (read across page)

X= Har. 1&3-A, 1&2-B, 1&3-A

Y= Har. 2&4-A, 3&4-B, 2&4-C.

Note: Press the 3 threads weft groups of "X" together with beater as though they were one large thread. Do the same with "Y" group. This forms the open work in fabric. (See PEACH GLOW sample.)

(Knox Yarns from THE YARN MART.)

No. 12 RAINBOW PASTEL



	4		4		4
3	3	3	3	3	3
2	2	2	2	2	2
1		1		1	

Standard Tie-up

Thread the draft above with the warp exactly as given under "Warp Order", continuing repeating the 18 warp threads regardless of the heddles on which the yarns come.

WARP ORDER:

L=1 end 20/2 Knox Lavender, 511

T=1 end Butterworth White/gold Rayon Twist

P=6 ends 40/2 Knox Peach linen, 546

O=2 ends 20/2 Ederlin Orchid linen

B=2 ends 40/2 Knox Aqua, 528

W=4 ends 40/2 Knox White linen, or substitute

C=2 ends 40/2 Knox Chartreuse linen, 522

One end in a heddle. Sley a No. 15 reed with two ends through a reed dent.

WEFT: W=40/2 White Knox linen (or other brand)

X= Contessa's Yellow/Silver cotton.

TREADLING: (read across the page)

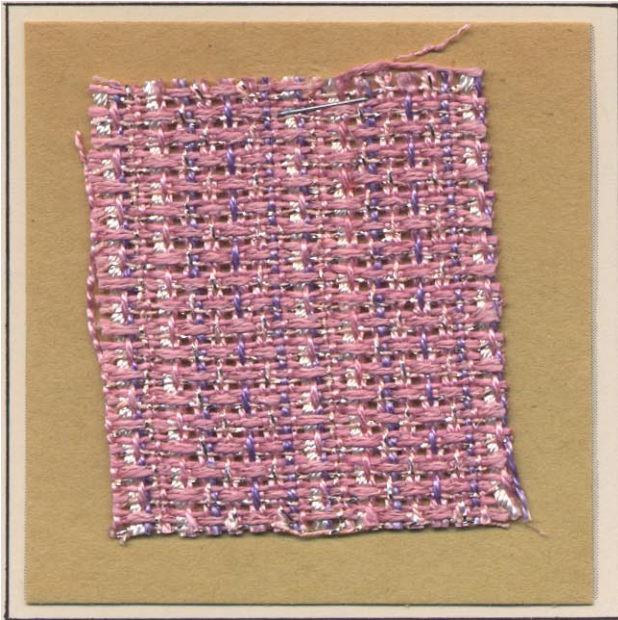
"X" Har. 1&3-W, 1&2-X, 1&3-W.

"Y" Har. 2&4-W, 3&4-X, 1&3-W.

This fabric should be woven closer. Please see "note" under BLUE BONNET, and also PEACH GLOW sample. Hold PEACH GLOW sample up to the light. (Knox yarns from THE YARN MART.)



No. 13 WILD ORCHID



No. 14 ORANGE SHADOW



Sel.								Sel.	
R	R	V	P					R	R
R	R	V	W	V	R	R	V	R	R
R	W	P	R	R	R	R	R	R	R
R		P	P		R	R			

WARP: 20/2 Knox No. 1 Wine Red linen=R.  
 V= 20/2 Knox Violet linen,511  
 W= Butterworth 3-ply White Rayon Twist  
 P/S= Pink/Silver cotton (Kouble or Troy)

WEFT: R= 20/2 Knox No.1 Wine Red linen.  
 Another shuttle with No.1 Red Wine linen and  
 Butterworth Pink Fraille wound together on  
 same bobbins F/R.  
 P/S= Pink/Silver cotton.

TREADLING: (read across the page)  
 Har. 1&3-R, 1&2-F/R, 1&3-P/S.  
 " 2&4-R, 3&4-F/R, 2&4-P/S.  
 See "note" about weaving under BLUE BONNET.  
 \*\*\*\*\*

ORANGE SHADOW, con't. Explanation...  
 IN "a,b,c,and d" the first 4 combinations  
 of TREADLES are used once, but the fifth  
 combination "4-3" is used 3 times. "a", for  
 instance by HARNESS is: 1&4,2&3,2&4, 1&3,  
2&3, 1&4,1&3, 2&4, and 1&4,2&3-1&4,2&3-1&4,  
2&3. Underscored harness indicate dark  
 sheds, or the Orange Rayon, in this case.

(Knox linen yarns from THE YARN MART)

	•	x		•	x		•	•	•	x	•	x
	x	•		x	•		x	x	x	•	x	x
	•	x		•	•	•	x			•	x	x
x	•	x	x	x	•		x			•	x	x

Tie-up (Standard)

d	d
c	c
c	c
d	d

1234

			x	•	x	x	x
			•	x		•	•
x	x	x		•	x		
•	•	•	x		•		

WARP: •=Dark ends, Grant's 20/2 Honeydew linen.  
 x= Light ends-Robin & Russ 20/2 White Ramie.  
 Alternate the Honeydew linen with the White  
 Ramie throughout the width of the warp. See  
 woven sample and also the draft.

One end in a heddle. Sley a No. 12 reed with 2  
 warp ends in a dent--always a dark and a light  
 warp end through the same dent.

WEFT: Robison's 600 Denier Orange Rayon, doubled  
 on bobbins together with 1/64 copper metallic,  
 for the dark weft shots. For the light weft  
 shots use 20/2 White Ramie wound on the same bob  
 bin with 1/64 Silver metallic.

TREADLING: Dark weft shots are underscored, light  
 weft shots are not underscored.

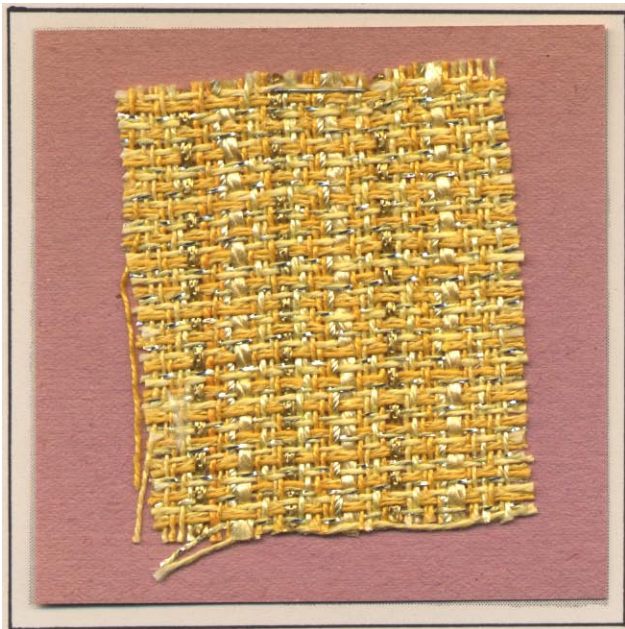
- (a) TREADLES 4,3-2,1-3,4-1,2--(4,3) 3 times.
- (B) " 2,1-3,4-1,2-4,3--(2,1) 3 times.
- (c) " 3,4-1,2-4,3-2,1--(3,4) 3 times.
- (d) " 1,2-4,3-2,1-3,4--(1,2) 3 times.

There are 14 weft shots in each group, above.

(See note at bottom of WILD ORCHID)



No. 15 CALENDULA



X	V	G	X	OT	X	X	B	G	X	B
G	X	B	X	V	G	X	OT	X	X	B
X	X	B	X	X	B	X	V	X	X	OT
X	X	OT	X	X	B	X	X	B	X	V

For selvages thread 1,2,4,3 and 3,4,2,1.

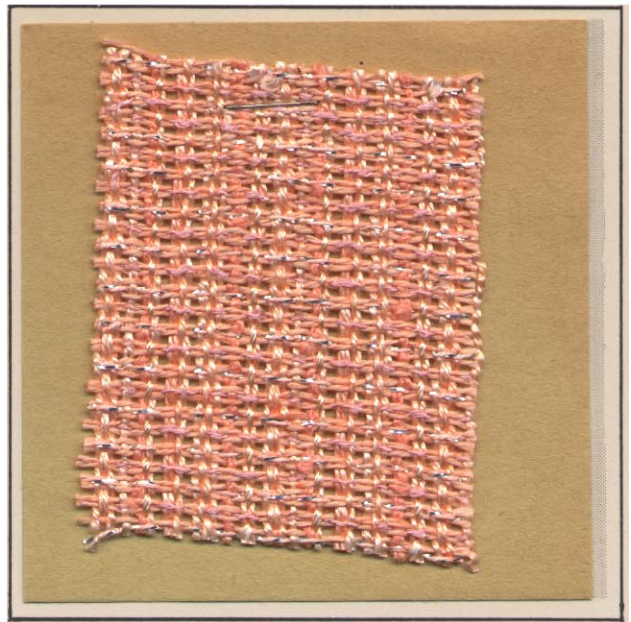
WARP: B=2 ends 20/2 Ederlin Buttercup linen.  
 T= 1 end 3-ply Yellow Rayon Twist(Blum)  
 O= 1 end 20/2 Grant's Spanish Yellow linen  
 V= 1 end Yellow Spun Viscose, 16000(BTWH)  
 X= 2 ends 20/2 Ederlin Maize linen, 2 ends  
 20/2 Grant's Spanish Yellow, and 2 ends of  
 Knox 20/2 Yellow linen 570. Thread the 6  
 threads at random on the "x" heddles.  
 (20/2 Ederlin Maize may be substituted for  
 the 6 ends.)  
 G= 1 end Butterworth Gold Chainette, 7502.

One warp end in a heddle, except "OT" are  
 threaded through one heddle. Sley a No. 12  
 reed as follows: Contents of two heddles  
 through a reed dent, "OT" is considered 2  
 warp ends, and Sley "V" and "G" each in a  
 dent.

WEFT: 1. Lt.Green/Silver cotton(Kouble).  
 2. 20/2 Knox Yellow linen 570, same as warp.  
 3. One strand Grant 20/2 Yellow, 70068, and  
 one strand of Butterworth Yellow Fraille,  
 3519 on the same bobbin.

TREADLING: Broken Twill..Har. 1&2, 2&3,  
 1&4, 3&4. Weave with the 3 weft bobbins  
 in the order given under weft, and use the  
 3 shuttles in that order, regardless of the  
 shed.

No. 16 PEACH GLOW



Sel.				Sel.			
P	P	T	P	P	P	P	P
P	P	DD	P	D	PP	P	P
P	P	P	B	D	P	B	P
P	P	T	FP	P	P	P	P

WARP: P= 20/2 Knox Peach linen 546—12 ends in  
 the draft or pattern unit.  
 B= Butterworth Peach linen Boucle—2 ends.  
 T= 3-ply Apricot Rayon Twist(Blum)—2 ends.  
 D= 20/2 Knox Peach linen 547—4 ends.  
 Total 20 warp ends in draft unit.

One end in a heddle. Use two heddles for "DD"  
 and "PP". Sley a No. 12 reed as follows: One  
 end of the boucle in a dent. All other yarns  
 sley two ends in a reed dent.

WEFT.: Knox 20/2 Peach linen 546=P  
 F= Butterworth Pink Fraille  
 M= Pink/Silver metallic cotton. (Kouble)

TREADLING: (read across the page)

"a" Har. 1&3-P, 1&2-M, 1&3-P.

"b" Har. 2&4-P, 3&4-F, 2&4-P.

Do not beat too hard, rather lay in place with  
 the beater the 3 weft shots of "a" as though they  
 were on large thread. Do the same with the "b"  
 group. Watch the small squares between the groups  
 of 3 weft shots. The fabric should not be flimsy.  
 Hold the sample up to the light to see what I  
 mean.

(Knox linens from THE YARN MART)



No. 17 TANGERINE



Sel.				Sel.			
4	B	R	D	4			
3	O	B	O	3			
2	S	B	S	2			
1	V	B	D	1			

WARP:

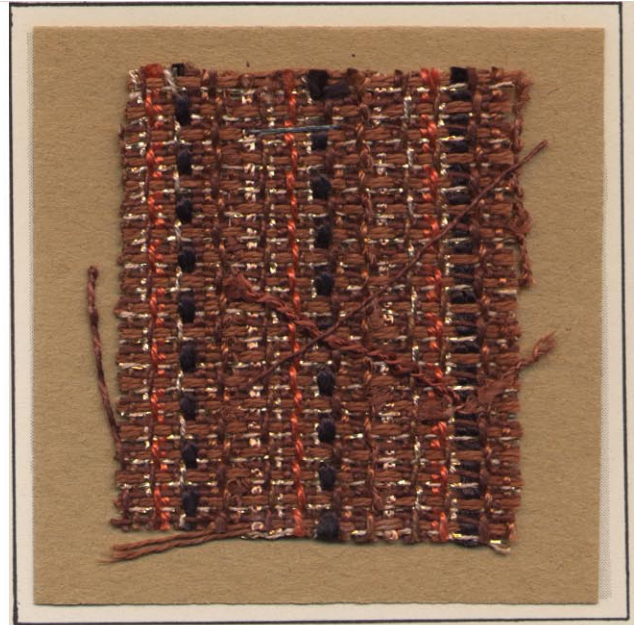
D= 1 end Lily's No. 5 Dk. Orange Perle cotton  
 O= 1 end Grant 20/2 Orange linen  
 S= 1 end Spun Orange Rayon CL-35, Butterworth  
 D= 1 end Lily's No. 5 Dk. Orange Perle  
 R= 1 end Butterworth Orange Rayon Ratina 827  
 B= 4 ends Lily 10/2 Burnt Orange Perle 1457  
 O= 1 end Grant 20/2 Orange linen  
 S= 1 end Orange Spun Rayon CL-35  
 V= 1 end Spun Viscose Rust, 16030 (Butterwth)  
 One in a heddle. Sley a No. 12 reed with two ends in a dent, except R and V are sleyed each in a dent.

WEFT: T= Kouble Tangerine Spun Novelty Rayon.  
 S= Orange Spun Rayon CL-35, like warp.  
 M= Kouble Red/Gold metallic cotton.

TREADLING: (read across page)  
 Har 1&2-T, 2&3-S, 2&4-T, 1&3-M.  
 " 1&4-T, 3&4-S, 2&4-T, 1&3-M.

Beat fairly well. This is not an upholstery fabric---hold up to the light and observe. It might serve for upholstery if beaten down thoroughly, making a closely woven material.

No. 18 AUTUMN BRONZE



Sel.											
M	G	R	D	B	T	G	M	X	G		
D	E	R	V	M	G	R	D	B	G		
M	X	E	T	D	E	R	V	M	G		
D	B	T	G	M	X	E	T	D	G		

Sel.											
Standard	G	E	T	D	E	R	V				
Tie-up	G	T	G	M	X	E	T				
	G	G	R	D	B	T	G				
	G	E	R	V	M	G	R				

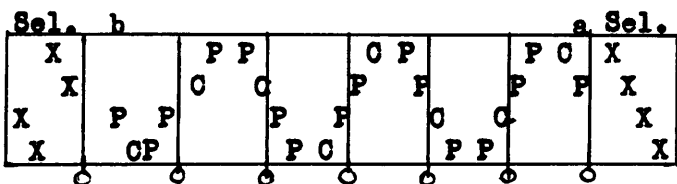
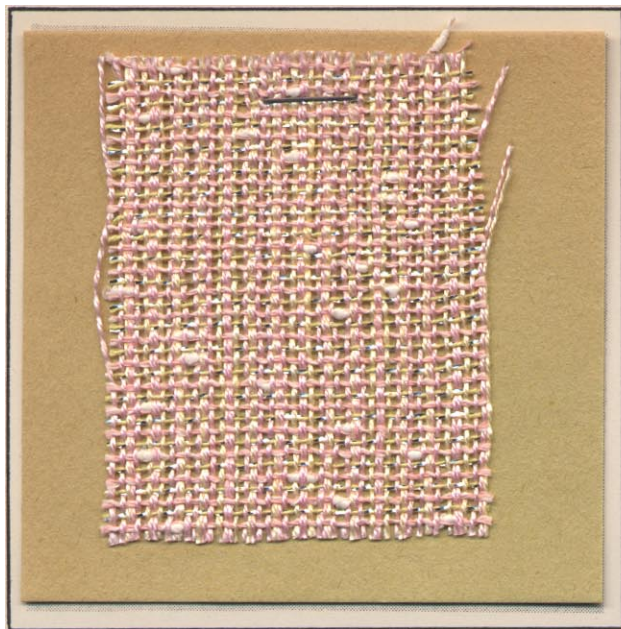
WARP: X= 1 end Butterworth Bronze Chainette 750  
 B= 1 end Butterworth Brown Ratina 1001  
 M= 2 ends 20/2 Knox Brown linen 568  
 D= 2 ends 12/2 Ederlin Brown linen (Tobacco Br.)  
 V= 1 end Dark Purple Spun Viscose 16040 (Btwh)  
 T= 2 ends Tan Gold cotton (try Kouble)  
 G= 2 ends Grant's 20/2 Brown linen  
 R= 2 ends Knox 20/2 Rust linen 566  
 E= 2 ends 20/2 Ederlin Tobacco Brown Linen (Btwh)  
 One end in a heddle. Sley a No. 12 reed with 2 ends in a dent, except X, B, and Y are each sleyed in a dent.

WEFT: T= Tan/Gold cotton like warp  
 M= 20/2 Knox Brown linen 568, wound 2 strands on a bobbin.  
 E= One Strand Ederlin 20/2 Tobacco Brown linen

TREADLING: (read across page)  
 Har. 2&4-T, 1&4-2 strands M, 2&4-E.  
 " 1&3-T, 2&3- " " M, 1&3-E.  
 This is not an upholstery fabric---hold to light it is really an open work material. Would be nice to use on blonde finish tables.



No. 19 PEONY



**WARP ORDER:** One end 30/2 Knox Pink linen 555, one end 30/2 Knox Cream linen 579, and one end 30/2 Knox Pink linen 555.

One end in a heddle. Sley a No. 15 reed as follows: two ends of selvage yarns in a dent, skip a dent (↓), then 4 ends of yarn in one dent through a to b, skipping a reed dent after each 4 yarns sleyed. The ↓ indicates a skipped dent.

**WEFT:** N= Rose Mills Novelty Pink/white nubby linen/cotton yarn.

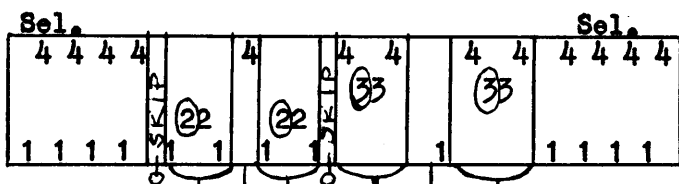
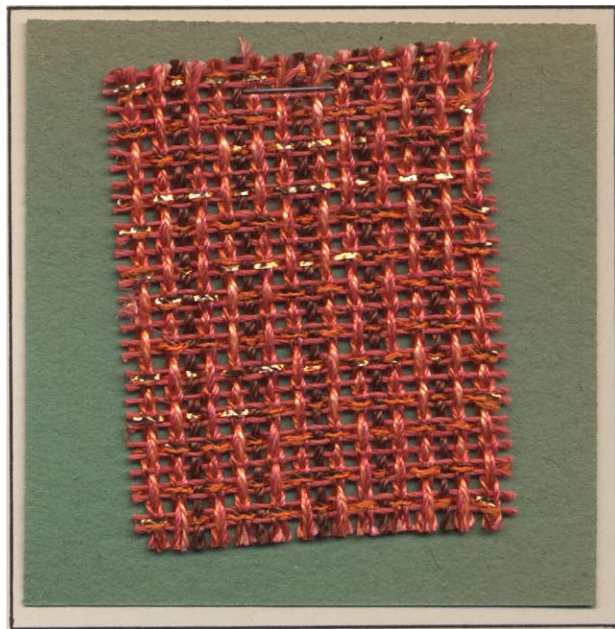
S= Light Green/Silver cotton (Kouble or Troy)

**TREADLING:** Tabby (Har. 1&3 and 2&4) one shot of "N" alternating with a shot of "S".

A heavier fabric. may be produced by using this treadling: Har. 2&4-N, 2&3-S, 2&4-N, Har. 1&3-N, 1&4-S, 1&3-N. This last treadling, I believe, is to be preferred.

(Knox linens from THE YARN MART)

No. 20 COPPER TONE



**WARP ORDER:** Two ends 20/2 Knox Terra Cotta 551 linen. One end 20/2 Knox deep Peach linen 548, One end 20/2 Knox Rust linen 566, One end 16/3 Knox Brown linen 569. Two ends 20/2 Knox linen 551. One end 20/2 Knox linen 548. One end Knox linen 566.

One end in a heddle. Note: thread the lightest color yarn on the circled heddles.

Sley a No. 12 reed as follows: sley selvages 2 ends in a reed dent. For open work areas sley 4,3,3,4 in one dent, then "1" in a dent, Next four threads in a dent, skip a dent. Next four ends in a dent, "4" alone in a dent, next four ends in a dent, Skip a dent. Continue this sleying until the selvage is reached. Omit the skipped dent just before the left selvage.

**WEFT:** L= 20/2 Knox linen 551. M= Butterworth's Pumpkin Fraille 3502 wound on same bobbin with supported 1/50 Copper metallic.

**TREADLING:** Har. 2&4-L, 1&2-M, 2&4-L, 1&3-L, 2&4-L, 1&2-M, 2&4-L.

Har. 1&3-L, 3&4-M, 1&3-L, 2&4-L, 1&3-L, 3&4-M, 1&3-L. Place the weft shots with beater and use the woven sample for construction comparison

(Knox Linens from THE YARN MART)

12/2 Ederlin Tobacco Brown linen may be substituted for the 16/3 Knox Brown linen.



No.21 RUSTIC PATIO

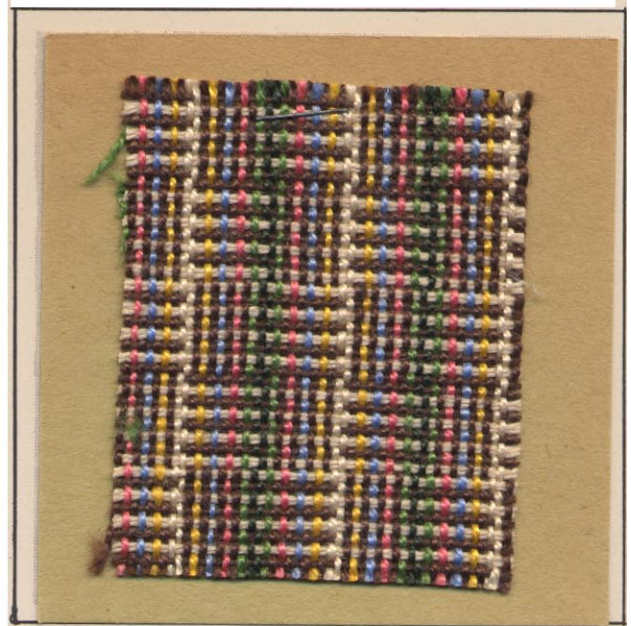


AFTER LAST REPEAT

Sel.	R	R	R	R	R	R	R	R	R	R	R	Sel.
	R	R	R	R	XXX		XXX	R	R	R	R	R
	R				RR	RR	RR					R
	R				RR	RR						R

See extra sheet in back of folio for further instructions

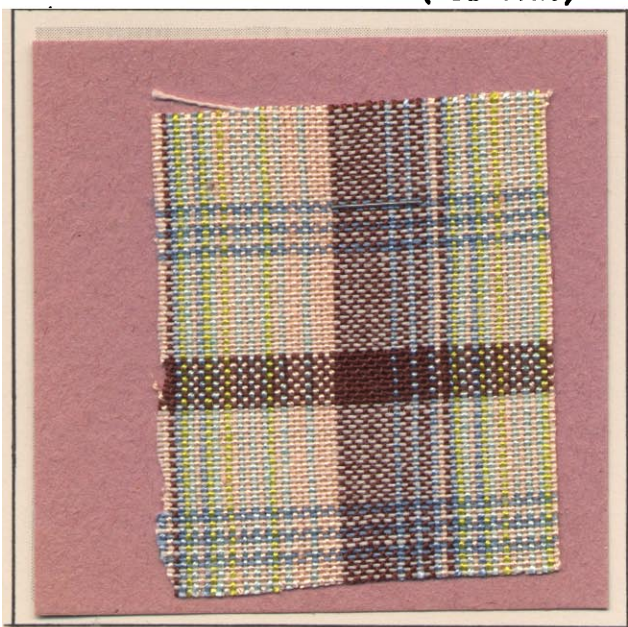
No.22 MORNING CHEER



X	X	Y	R	D
R	Y	X	X	D
X	X	E	B	G
G	B	E	X	X

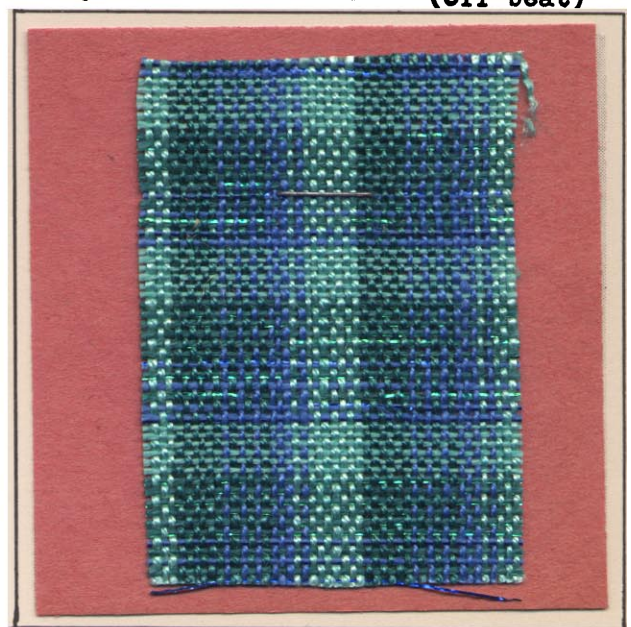
All Standard Tie-ups

No. 23 SPRING PLAID (Off beat)



Twill draft (4,3,2,1 or 1,2,3,4)

No. 24 NOVELTY PLAID (Off beat)



4	J	J	J	T	T	T	4
3	J	B	B	B	T	T	3
2	J	J	J	B	T	T	2
1	J	J	B	B	B	T	1

No. 21 RUSTIC PATIO.

WARP ORDER: 8 or more 20/2 Knox Red linen 560 for rt. selvage. R= 7 ends 20/2 Red, X=3 ends Butterworth Tobacco Brown, R= 10 ends 20/2 Red, X=3 ends 20/2 Tobacco Brown, Repeat "a" to "b" for desired width of fabric, and end with 7 ends 20/2 Red. Add 8 or more 20/2 Red for selvage.

One end in a heddle for both selvages and borders. Thread 3 Browns(X's) in one heddle, and 2 ends of Red(RR) through one heddle. Sley a No.12 reed as indicated on the draft above.

WEFT: R=20/2 Knox Red linen 560, doubled on bobbins. T= Butterworth's No. 4300 White/Gold Rayon Twist, doubled on bobbins.

TREADLING: Make a heading with TABBY treadling (Har. 2&4 and 1&3) as deep as desired and end with Har 2&4.

"A" Har. 2&3-T, 2&4-R, 2&3-T, 2&4-R, 2&3-T, 2&4-R.

"B" Har. 1&3-R, 2&4-R, 1&3-R, 2&4-R, for in between the "A" areas. Repeat "A" and "B", ending with sufficient heading for hem.

Allow sufficient selvages for hemming, since edges are not neat.

(Knox linens from THE YARN MART)

Draft is on sample sheet.

No. 23 Off Beat SPRING PLAID.

WARPING ORDER: All yarns are 40/2 Knox linens.

"A" 9 Brown 569, 1 Powder Blue 534, 2 Brown, 1 Powder Blue, 2 Brown.

"B" 1 Powder Blue, 1 Peach 546, 1 Brown, 1 Pd. Blue, 1 Chartreuse 522,

"C" 1 Turquoise 531, 1 Peach, 1 Pd. Blue, 1 Chartreuse, 1 Turquoise, 1 Peach, 1 Turquoise.

"D" 1 Peach, 1 Turquoise, 1 Peach, 1 Turquoise, 1 Peach, 1 Turquoise.

"E" 1 Chartreuse, 1 Peach, 1 Turquoise, 3 Peach, 1 Turquoise, 4 Peach.

Total of 44 warp ends in unit of design.

WEFT: Robin & Russ' 40/2 White Ramie. Also Blue, Brown, like those used in the warp.

TREADLING: Tabby (Har. 2&4 and 1&3) read across- 18 shots of White Ramie. 9 shots of Brown linen. 18 shots of White Ramie.

2 shots Powder Blue, 2 shots White Ramie, 2 shots Pd. Blue, 2 shots White Ramie, 2 shots Powder Blue. Repeat from Beginning.

The main thing to watch while weaving is to see that the small Brown square is squared. I think it will take nine shots to do this. Some weavers may vary. (This has already been tagged as Summer dress material.)

No. 22 MORNING CHEER

WARP: Robin & Russ' 16/2 Ramie yarns: D=dark Green 64, G=Apple Green 65, X=Brown 53, R=Rose Pink 59, B=Sky Blue 63, Y=Gold 56, E=Eggshell 51.

WARP ORDER: 2 ends D, one end G, one end X, one end R, one end X, one end B, one end X, one end Y, one end X, 2 ends E, one end X, one end Y, one end X, one end B, one end X, one end R, one end X, one end G—and repeat from the beginning. (20 ends in the draft.) One end in a heddle. Two ends in a dent of a No. 12 reed. (24 ends to the inch.)

WEFT: E= 16/2 Eggshell 51 Ramie, doubled on bobbins. X= 16/2 Brown 53 Ramie, wound single on bobbins.

TREADLING: Har. 2&4-E, 1&3-X. Repeat 4 times. See woven sample.

Har. 2&4-X, 1&3-E. Repeat 4 times.

This is a variation of LOG CABIN weave. If beaten closer than woven sample, the fabric would make an excellent, long wearing material for upholstery.

(Draft is on sample sheet)

No. 24 Off Beat NOVELTY PLAID

WARP ORDER: T= 20/2 Knox Turquoise linen 513  
B= 20/2 Ederlin Olympic Blue linen (Butterworth)  
J= 20/2 Knox Jade linen 530

7 ends T, one end B, one end T, 3 ends B, one end J, one end B, one end J, one end B, one end J, one end B, 6 ends J. (24 ends.)

One end in a heddle. Two ends in a dent of a No. 12 reed.

WEFT: T=20/2 Knox Turquoise 513. B= 20/2 Ederlin Olympic Blue. J= 20/2 Knox Jade 530, wound on the same bobbin with 1/64 supported bright Green metallic yarn.

TREADLING: Tabby (Har. 2&4 and 1&3) 6 shots of T, 2 shots B, then alternate one shot each of J, B, J, B. Then 6 shots of J. Allow for sufficient selvage on both sides of the fabric, since the edges are messy and should be hemmed, being the result of carrying the weft yarns from one area to another where the same weft yarns are used.

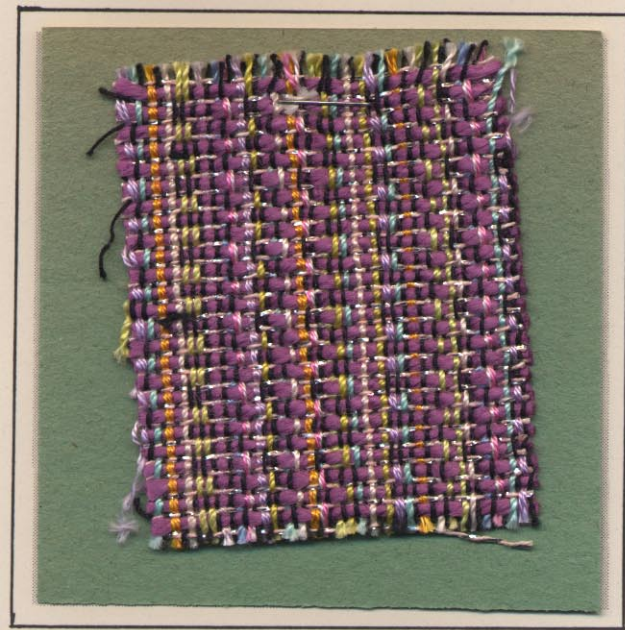
Knox yarns from THE YARN MART. Mrs. Snyder has an extensive choice of colors and sizes in this imported linen yarn.



# Converted Shadow Weave

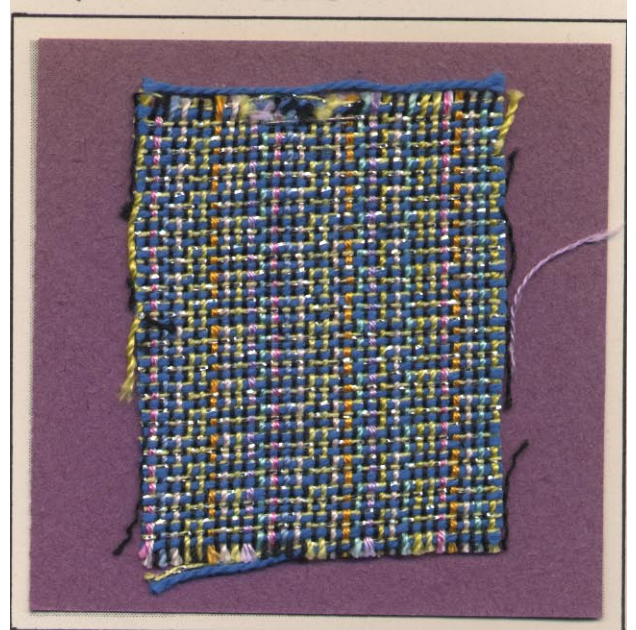
## by MARIAN POWELL

No. 25 HELIOTROPE



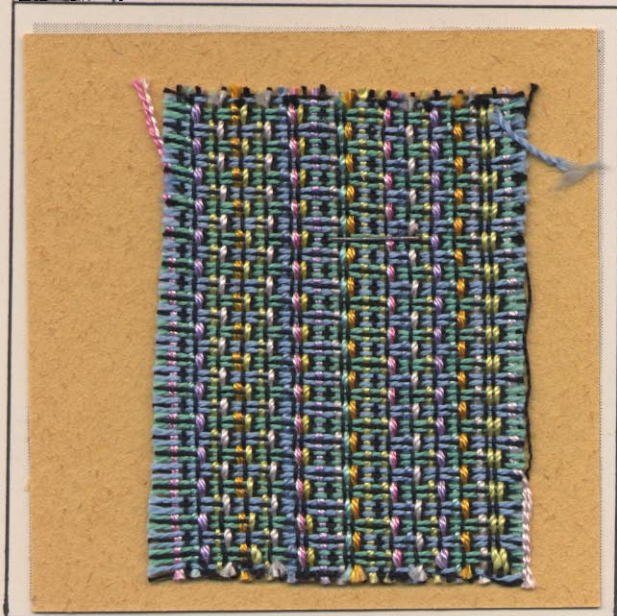
WEFT: DARK-Butterworth Orchid Spun Viscose  
 Light- Pink/Silver cotton (Troy or Kouble)  
 TREADLING: TREADLES 1,2,3,4-1,4,3,2  
 Ex. Treadle 1 (Har.1&3) Orchid Viscose  
           " 2 (Har.2&4) Pink/Silver cotton  
           " 3 (Har.2&3) Orchid Viscose  
           " 4 (Har.1&4) Pink/Silver cotton

No. 26 BLUE VIOLET



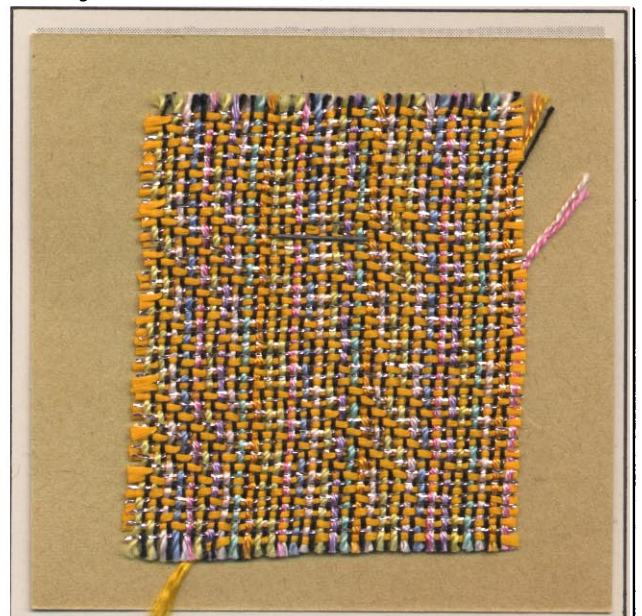
WEFT: DARK-Lily Soft Twist 8/2 cotton, No.28  
 Light- Green/Silver cotton (Troy or Kouble)  
 TREADLING: TREADLES 1,2,1,2-2,1,2,1  
 (Underscored treadles use DARK yarn, treadles  
 not underscored use light yarn)  
 See TABBY TALK for further instructions

No. 27 SAPPHIRE



WEFT: DARK-Treadle 1 and treadle 2,30/3  
 Searle's Black cotton, same as warp.  
 LIGHT-Treadle 4, Turquoise No. 8 O&B or DMO  
 Perle cotton (Lee Ward)  
 Light- Treadle 3, Sky Blue No.8 O&B or DMO  
 Perle cotton (Lee Ward)  
 See TABBY TALK for further instructions  
 TREADLING: Treadles 4,1,4-3,2,3

No. 28 YELLOW TOPAZ



WEFT: Robison-Anton 600 denier Yellow Rayon,  
 for DARK treadles.  
 Light- 1/64 Pink supported Metallic (Tinsel  
 Trading Company)  
 Treadles 1,2,3,4-2,1,4,3-1,2,3,4-2,1,4,3  
1,2,1,2-3,4,3,4-2,1,2,1-4,3,4,3.  
 See TABBY TALK for further instructions