

**Figure 18. Doily.** — Eight and one-half inches in diameter. No. 50 crochet cotton and two steel knitting-needles No. 15.

Cast on 45 sts. *1st row*—sl 1, k 20, o, n, k 5, o, n, k 11, o, n, o, k 2. *2d row*—k 44, leave 2. *3d row*—sl 1, k 19, o, n, k 5, o, n, k 4, n, o2, n, k 3, o, n, o, k 2. *4th row*—k 10, p 1, k 32, leave 4. *5th row*—sl 1, k 18, o, n, n, o2, n, k 1, o, n, k 1, (n, o2, n) twice, k 2, o, n, o, k 2. *6th row*—k 9, p 1, k 3, p 1, k 7, p 1, k 20, leave 6. *7th row*—sl 1, k 17, o, n, k 5, o, n, k 2, n, o2, n, k 5, o, n, o, k 2. *8th row*—k 12, p 1, k 28, leave 8. *9th row*—sl 1, k 16, o, n, n, o2, n, k 1, o, n, k 15. *10th row*—Bind off 4, k 15, p 1, k 18, leave 10. *11th row*—sl 1, k 15, o, n, k 5, o, n, k 6, o, n, o, k 2. *12th row*—k 34, leave 12. *13th row*—sl 1, k 14, o, n, n, o2, n, k 1, o, n, k 6, o, n, o, k 2. *14th row*—k 16, p 1, k 16, leave 14. *15th row*—sl 1, k 13, o, n, k 5, o, n, k 6, o, n, o, k 2. *16th row*—k 32, leave 16. *17th row*—sl 1, k 12, o, n, n, o2, n, k 1, o, n, k 6, o, n, o, k 2. *18th row*—k 16, p 1, k 14, leave 18. *19th row*—sl 1, k 11, o, n, k 5, o, n, k 10. *20th row*—Bind off 4, k 24, leave 20. *21st row*—sl 1, k 10, o, n, n, o2, n, k 1, o, n, k 1, o, n, o, k 2. *22d row*—k 11, p 1, k 12, leave 22. *23d row*—sl 1, k 9, o, n, k 5, o, n, k 1, o, n, o, k 2. *24th row*—k 23, leave 24. *25th row*—sl 1, k 8, o, n, n, o2, n, k 4, o, n, o, k 2. *26th row*—k 11, p 1, k 10, leave 26. *27th row*—sl 1, k 7, o, n, k 8, o, n, o, k 2. *28th row*—k 21, leave 28. *29th row*—sl 1, k 20. *30th row*—Bind off 4, k 14, leave 30. *31st row*—sl 1, k 10, o, n, o, k 2. *32d row*—k 14, leave 32. *33d row*—sl 1, k 9, o, n, o, k 2. *34th row*—k 13, leave 34. *35th row*—sl 1, k 8, o, n, o, k 2. *36th row*—k 12, leave 36. *37th row*—sl 1, k 7, o, n, o, k 2. *38th row*—k 11, leave 38. *39th row*—sl 1, k 10. *40th row*—Bind off 4, k 44.



FIG. 18. DOILY. 8½-INCH  
See page 7

Repeat from 1st row until there are 12 sections. In the last section, bind off 4, then bind off 44, taking one st of the 1st row with each st bound off; or bind off all the row and overcast the first and last edges together. With the thread left from casting on, draw the sts at centre close and fasten with a sewing-needle.

It may be helpful to notice that in each even row there are left without knitting (toward the centre) as many sts as the number of the row; for example, in the 8th row there are 8 sts left on the left-hand needle. The first, and all odd rows, are knit from the centre to the outer edge, and all begin,—sl 1, etc. There will be six large eyelets (made by o2, and in the next row k 1, p 1) in the band of open, and four large eyelets in the little figure above the open band; twelve smaller eyelets (but one o) in the outer row and

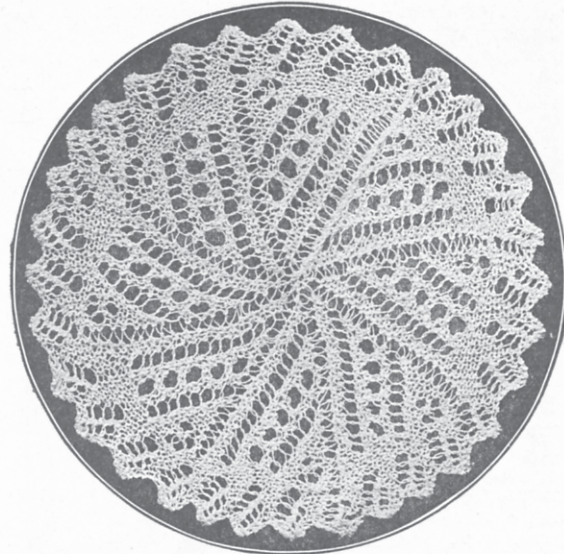


FIG. 19. DOILY. 5¼-INCH. See page 7

fourteen eyelets in the inner row of open band. At the outer edge, it is in the 10th, 20th, 30th, and 40th rows that 4 sts are bound off.

If one knits very loosely, then finer needles should be employed than those directed; if one knits tightly, then larger needles should be selected. The needles suggested are for medium tension. No. 70 or 100 crochet cotton and No. 18 or 20 needles would make beautiful fine work, but the doily would be smaller.

**Figure 19. Knitted Doily.**—Five and one-fourth inches in diameter. No. 50 crochet cotton and two steel knitting-needles No. 15.

Cast on 25 stitches. *1st row*—sl 1, k 3, o, n, k 5, o, n, k 8, o, n, o, k 2. *2d row*—k 25, leave 1. *3d row*—sl 1, k 3, o, n, n, o2, n, k 1, o, n, k 4, o, n, k 2, o, n, o, k 2. *4th row*—k 18, p 1, k 6, leave 2. *5th row*—sl 1, k 3, o, n, k 5, o, n, k 2, (o, n) twice, k 2, o, n, o, k 2. *6th row*—k 25, leave 3. *7th row*—sl 1, k 3, o, n, n, o2, n, k 1, o, n, k 2, o, n, k 4, o, n,

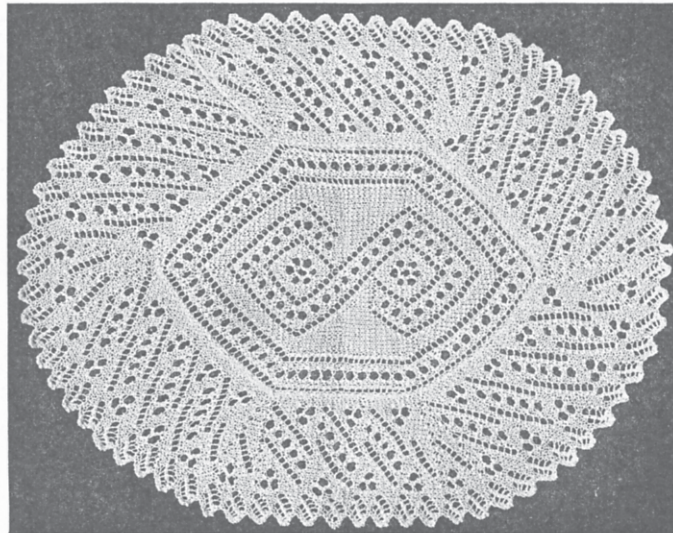


FIG. 20. OBLONG DOILY. See page 36



o, k 2. 8th row—k 18, p 1, k 6, leave 4. 9th row—sl 1, k 3, o, n, k 5, o, n, k 12. 10th row—Bind off 4, k 19, leave 5. 11th row—sl 1, k 3, o, n, n, o2, n, k 1, o, n, k 3, o, n, o, k 2. 12th row—k 13, p 1, k 6, leave 6. 13th row—sl 1, k 3, o, n, k 5, o, n, k 3, o, n, o, k 2. 14th row—k 20, leave 7. 15th row—sl 1, k 3, o, n, n, o2, n, k 1, o, n, k 3, o, n, o, k 2. 16th row—k 13, p 1, k 6, leave 8. 17th row—sl 1, k 3, o, n, k 10, o, n, o, k 2. 18th row—k 20, leave 9. 19th row—sl 1, k 3, o, n, n, o2, n, k 10. 20th row—Bind off 4, k 7, p 1, k 6, leave 10. 21st row—sl 1, k 3, o, n, k 5, o, n, o, k 2. 22d row—k 5, leave 11. 23d row—sl 1, k 3, o, n, k 5, o, n, o, k 2. 24th row—k 15, leave 12. 25th row—sl 1, k 3, o, n, k 5, o, n, o, k 2. 26th row—k 15, leave 13. 27th row—sl 1, k 10, o, n, o, k 2. 28th row—k 15, leave 14. 29th row—sl 1, k 14. 30th row—Bind off 4, k 9, leave 15. 31st row—sl 1, k 5, o, n, o, k 2. 32d row—k 10, leave 16. 33d row—sl 1, k 5, o, n, o, k 2. 34th row—k 10, leave 17. 35th row—sl 1, k 5, o, n, o, k 2. 36th row—k 10, leave 18. 37th row—sl 1, k 5, o, n, o, k 2. 38th row—k 10, leave 19. 39th row—sl 1, k 9. 40th row—Bind off 4, k 24, having 25 on the needle. Repeat from 1st row until there are 8 sections. After knitting the 40th row of last section, bind off and overcast to first edge of first section,

**Figure 1. Centrepiece.**— (See Frontispiece.) Three balls No. 70 crochet cotton and two steel knitting-needles No. 16.

A very satisfactory method of knitting a circular piece is employed in this handsome centerpiece. Stitches equal to the radius of the piece are cast on and the knitting is done back and forth, first from centre to circumference, then back to centre. Each odd row begins at the centre with "sl 1"; each even row begins at circumference with a knitted stitch, and toward the centre a number of stitches are left unknitted on the left-hand needle. This number varies, from one to three, in different designs. In this case, three more are left each time; in similar work, Fig. 50, two more are left; in Fig. 19 but one is left.

In the last row of the section, after 4 or 5 (whatever the number) are bound off, the stitches are all knit down to the centre and one begins with the first row again. The section is repeated a given number of times and the entire row is bound off at the last row of the last section. The edges are overcast together and with needle and thread the centre stitches are drawn close.

Cast on 120 sts. 1st row—sl 1, k 29, (o, n, k 5, o, n, k 16) 3 times, k 11 more, o, n, o, k 2. 2d row—sl 1, k 117, leave 3, turn. 3d row—sl 1, k 27, (o, n, n, o2, n, k 1, o, n, k 16) 3 times, k 11, o, n, o, k 2. 4th row—sl 1, k 36, (p 1, k 24) 3 times,

k 4, leave 6. (All even rows are, — sl 1, k plain, except where there is a double over, o2, it is necessary to purl the second over, and leave 3 more before turning each time.) 5th row—sl 1, k 25, (o, n, k 5, o, n, k 7, n, o2, n, k 5) 3 times, k 11, o, n, o, k 2. 6th row—sl 1, k 22, (p 1, k 24) 3 times, k 16, leave 9. 7th row—sl 1, k 23, (o, n, n, o2, n, k 1, o, n, k 4, n, o2, n, n, o2, n, k 4) 3 times, k 11, o, n, o, k 2. 8th row—sl 1, k 21, (p 1, k 3, p 1, k 10, p 1, k 9) 3 times, k 15, leave 12. 9th row—sl 1, k 21, (o, n, k 5, o, n, k 5, n, o2, n, k 7) 3 times, k 11, o, n, o, k 2. 10th row—sl 1, (k 24, p 1) 3 times, k 34, leave 15. 11th row—sl 1, k 19, (o, n, n, o2, n, k 1, o, n, k 2, n, o2, n, n, o2, n, k 6) 3 times, k 11, o, n, o, k 2. 12th row—sl 1, k 23, (p 1, k 3, p 1, k 8, p 1, k 11) 3 times, k 9, leave 18. 13th row—sl 1, k 17, (o, n, k 5, o, n,

k 3, n, o2, n, k 9) 3 times, k 15. 14th row—sl 1, bind off 6, k 19, (p 1, k 24) 3 times, k 4, leave 21. 15th row—sl 1, k 15, (o, n, n, o2, n, k 1, o, n, k 16) 3 times, k 4, o, n, o, k 2. 16th row—sl 1, k 29, p 1, (k 24, p 1) twice, k 16, leave 24. 17th row—sl 1, k 13, o, n, k 23, (o, n, k 5, o, n, k 16) twice, k 4 o, n, o, k 2. 18th row—sl 1, k 94, leave 27. 19th row—sl 1, k 11, o, n, n, o2, n, k 19, (o, n, n, o2, n, k 1, o, n, k 16) twice, k 4, o, n, o, k 2. 20th row—sl 1, k 29, p 1, (k 24, p 1) twice, k 12, leave 30. 21st row—sl 1, k 9, o, n, k 14, n, o2, n, (k 5, o, n, k 5, o, n, k 7, n, o2, n) twice, k 9, o, n, o, k 2. 22d row—sl 1, k 15, (p 1, k 24) 3 times, leave 33. 23d row—sl 1, k 7, o, n, k 11, (n, o2, n, n, o2, n, k 4, o, n, n, o2, n, k 1, o, n, k 4) twice, n, o2, n, n, o2, n, k 8, o, n, o, k 2. 24th row—sl 1, k 14, p 1, k 3, p 1, (k 10, p 1, k 9, p 1, k 3, p 1) twice, k 19, leave 36. 25th row—sl 1, k 19, (n, o2, n, k 7, o, n, k 5, o, n, k 5) twice, n, o2, n, k 11, o, n, k 2. 26th row—sl 1, k 17, p 1, (k 24, p 1) twice, k 18, leave 39. 27th row—sl 1, k 14, (n, o2, n, n, o2, n, k 6, o, n, n, o2, n, k 1, o, n, k 2) twice, (n, o2, n) twice, k 14. 28th row—sl 1, bind off 6, k 9, p 1, k 3, p 1, (k 8, p 1, k 11, p 1, k 3, p 1) twice, k 13, leave 42. 29th row—sl 1, k 13, (n, o2, n, k 9, o, n, k 5, o, n, k 3) twice, n, o2, n, k 6, o, n, o, k 2. 30th row—sl 1, k 12, p 1, (k 24, p 1) twice, k 12, leave 45. 31st row—sl 1, k 24, o, n, n, o2, n, k 1, o, n, k 16, o, n, n, o2, n, k 1, o, n, k 13, o, n, o, k 2. 32d row—sl 1, k 22, p 1, k 24, p 1, k 25, leave 48. 33d row—sl 1, k 22, o, n, k 5, o, n, k 16, o, n, k 5, o, n, k 13, o, n, o, k 2. 34th row—sl 1, k 71, leave 51. 35th row—sl 1, k 20, o, n, n, o2, n, k 1, o, n, k 16, o, n, n, o2, n, k 1, o, n, k 13, o, n, o, k 2. 36th row—sl 1, k 22, p 1, k 24, p 1, k 21, leave 54. 37th row—sl 1, k 18, o, n, k 14, n, o2, n, k 5, o, n, k 5, o, n, k 13, o, n, o, k 2. 38th row—sl 1, k 33, p 1, k 33, leave 57. 39th row—sl 1, k 16, o, n, n, o2, n, k 7,



FIG. 21. HAND BAG. See Fig. 22 and page 9



(n, o2, n) twice, k 4, o, n, n, o2, n, k 1, o, n, k 13, o, n, o, k 2. 40th row—sl 1, k 22, p 1, k 9, p 1, k 3, p 1, k 10, p 1, k 17, leave 60. 41st row—sl 1, k 14, o, n, k 12, n, o2, n, k 7, o, n, k 5, o, n, k 17. 42d row—sl 1, bind off 6, k 28, p 1, k 27, leave 63. 43d row—sl 1, k 12, o, n, k 9, (n, o2, n) twice, k 6, o, n, n, o2, n, k 1, o, n, k 6, o, n, o, k 2. 44th row—sl 1, k 15, p 1, k 11, p 1, k 3, p 1, k 22, leave 66. 45th row—sl 1, k 22, n, o2, n, k 9, o, n, k 5, o, n, k 6, o, n, o, k 2. 46th row—sl 1, k 30, p 1, k 21, leave 69. 47th row—sl 1, k 33, o, n, n, o2, n, k 1, o, n, k 6, o, n, o, k 2. 48th row—sl 1, k 15, p 1, k 34, leave 72. 49th row—sl 1, k 31, o, n, k 5, o, n, k 6, o, n, o, k 2. 50th row—sl 1, k 48, leave 75. 51st row—sl 1, k 29, o, n, n, o2, n, k 1, o, n, k 6, o, n, o, k 2. 52d row—sl 1, k 15, p 1, k 30, leave 78. 53d row—sl 1, k 27, o, n, k 5, o, n, k 6, o, n, o, k 2. 54th row—sl 1, k 44, leave 81. 55th row—sl 1, k 25, o, n, n, o2, n, k 13. 56th row—sl 1, bind off 6, k 8, p 1, k 26, leave 84. 57th row—sl 1, k 23, o, n, k 6, o, n, o, k 2. 58th row—sl 1, k 33, leave 87. 59th row—sl 1, k 21, o, n, n, o2, n, k 2, o, n, o, k 2. 60th row—sl 1, k 8, p 1, k 22, leave 90. 61st row—sl 1, k 19, o, n, k 6, o, n, o, k 2. 62d row—sl 1, k 29, leave 93. 63d row—sl 1, k 17, o, n, k 6, o, n, o, k 2. 64th row—sl 1, k 27, leave 96. 65th row—sl 1, k 23, o, n, o, k 2. 66th row—sl 1, k 25, leave 99. 67th row—sl 1, k 21, o, n, o, k 2. 68th row—sl 1, k 23, leave 102. 69th row—sl 1, k 23. 70th row—sl 1, bind off 6, k 119.

Repeat from 1st row for about 25 sections; the number of sections necessary to make a flat circular piece will depend upon the size of thread, size of needles, and tension of worker. The illustrated model has 27 sections. In any case there should be enough to insure there will be no strain on the outer edge when the centrepiece is laid flat and thoroughly stretched out from centre to edge.

Bind off the whole of last section and overcast edges together, drawing the centre closely.

**Figure 21. Hand Bag.**— Loose-twist cotton No. 5, 4 skeins dark blue, 4 skeins medium blue, 2 skeins each, tan, cardinal, white, green, brown, 4 steel knitting-needles No. 12, and 1 dozen dark ivory rings No. 8.

This bag may be made of dark blue and medium blue, omitting the Roman stripes, or of brown and tan. One ball of each of two contrasting shades would be sufficient if the cotton in skeins cannot be secured. The work is commenced at the bottom and knit around. There are seven rolls of the dark blue and six sections between; 1st and 3d sections are mixed colors, 2d, 4th, 5th, and 6th sections are of medium blue.

Cast on 144 sts, 48 on each of three needles, join and knit with 4th needle. 1st round—Dark blue, p 144. 2d and 3d rounds—Like 1st round. 4th round—Tan, k 144. 5th round—Tan, \* k 4, o, k 1, o, k 4, sl 1, n, pass sl over n; repeat from \* around. 6th round—Cardinal, k 144, sl first st of each needle (after knitting this 1st st) to preceding needle. 7th round—Cardinal, like 5th round. 8th round—White, like 6th round. 9th round—White, like 5th round. 10th round—Green, like 6th round. 11th round—Green, like 5th round. 12th round—Medium blue, like 6th round. 13th round—Medium blue, like 5th round. 14th round—Brown, like 6th round. 15th round—Brown, like 5th round. 16th round—Dark blue, knit plain. 17th, 18th, and 19th rounds—Dark blue, purl. 20th round—Medium blue, like 6th round. The next 11 rounds, all of medium blue, are like 5th to 15th rounds, inclusive. 32d, 33d, 34th, and 35th rounds—Dark blue, like 16th, 17th, 18th, and 19th rounds. 36th round—

Tan, like 6th round. Next 11 rounds, in colors, like 5th to 15th rounds, inclusive.

A lining of dark green silk harmonizes with the peacock blues, and the tassel and cords are of dark blue cotton. The tassel is made by winding thread 80 times around a five-inch card; the cords are two crocheted chains, 20 inches long, with a double crochet in each st of the chain. These cords are run through the rings, which are sewed to each point of the binding off.

**Cameo Knitting. General Directions.**— Cameo knitting is a modern adaptation of the method used by our great-grandmothers in making striped mittens. The modern worker uses any block pattern she may fancy and develops some beautiful articles in plain knitting, the simplest of hand-work stitches.

Two colors are used, one for the background, or the open block, and the other for the pattern, or the solid block. The knitting is "back and forth," so, in every alternate row, one must purl to make the right side all plain knitting.

When changing from the background color to the

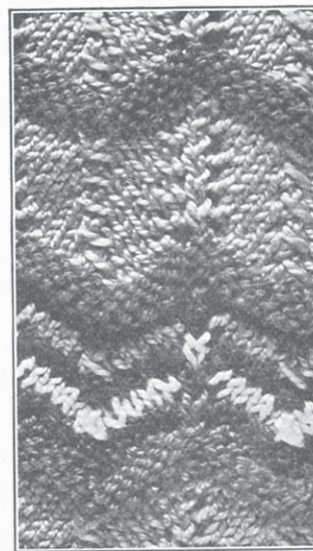


FIG. 22. DETAIL OF FIG. 21

other, "lay in" the pattern color thread by using it for the first stitch on the needle, leaving an end of an inch or more which may be fastened securely later. Use this thread on the needle, knitting as many stitches as required in the pattern, then drop this color, pick up the first thread, or background color, bring it from where last used, to the needle, and again knit in this color. Be careful it is not drawn too snug or it will pucker the work, nor yet too loose, or it will loosen in the first stitch, and spoil the evenness of the work; continue

changing colors in this way.

The work succeeds best with quite coarse thread, No. 5 or 10 crochet cotton, and rather fine needles, to make a close, firm fabric.

Its applications are many and varied. Small squares of white with letters in dainty colors may be used as inserts in towels, etc. Tops for pincushions made of yarn in pretty colors and designs make an ideal material to stick pins in; there seems to be no end of the ways in which cameo knitting may be used.

**Figure 23. Cameo Letter M for Towel.**— No. 5 crochet cotton and two steel knitting-needles No. 14 or 15.

Cast on 36 sts. 1st row—k 1, p 1; repeat across. 2d row—sl 1, o, n, \* o, sl second st on left needle over 1st st, take st off without knitting, put the left needle in from the back and slip it back again, repeat this to give the st enough twist to keep the threads crossed after the st is knit; repeat from \* until there are only 3 sts on left needle, k 1, o, n. (The fagoting is continued throughout by "sl 1, o, n" at the beginning of every row and ending with "o, n"; between, it is knit plain one row and purl the next.)



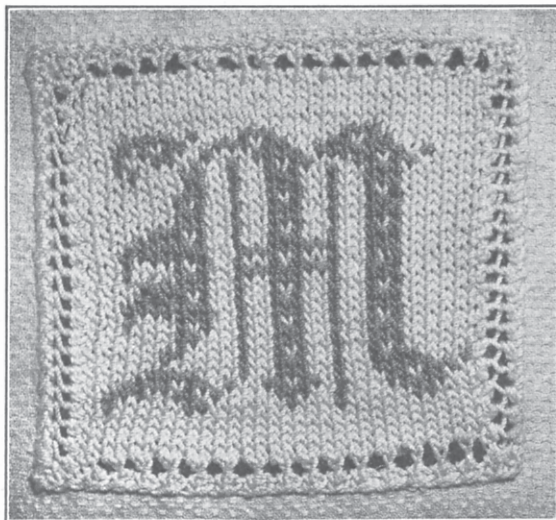


FIG. 23. LETTER FOR TOWEL IN CAMEO KNITTING  
See page 9 and Fig. 23A

3d row—sl 1, o, n, p 30, k 1, o, n. Fagot at each edge, knit and purl alternately until there are 4 rows of plain white. 1st row, beginning color — sl 1, o, n, k 2 white (w), lay in color, k 2 color (c), 5 w, 1 c, 3 w, 1 c, 6 w, 2 c, 5 w, 1 c, 3 w, o, n. 2d row — sl 1, o, n, p 2 w, 3 c, 2 w, 2 c, 1 w, 1 c, 4 w, 3 c, 2 w, 1 c, 4 w, 4 c, 2 w, o, n. 3d row — sl 1, o, n, k 3 c, 1 w, 2 c, 3 w, 1 c, 1 w, 2 c, 1 w, 2 c, 2 w, 1 c, 1 w, 2 c, 1 w, 4 c, 4 w, o, n. 4th row — sl 1, o, n, p 5 w, 4 c, 3 w, 1 c, 2 w, 3 c, 2 w, 1 c, 2 w, 5 c, 2 w, 1 c, o, n. It is now ready for the 5th row (with color),

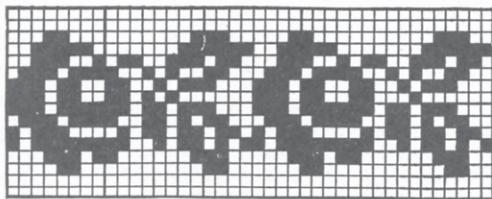


FIG. 24A. PATTERN FOR TOWEL, FIG. 24  
See Fig. 24B

and beginning at the right-hand side of the 5th row of block pattern, Fig. 23A, the letter will be easily finished by following the block pattern back and forth to the top of the letter, which is finished in the 27th row. 28th row — sl 1, o, n, p across with white until 2 sts are left, then o, n. 29th row — Like 28th row, but knit between fagoting. 30th and 32d rows — Like 28th row. 31st row — Like 29th row. 33d row — Like 2d row of plain white. 34th row — Like 1st row of plain white. Bind off.

The whole alphabet of this style is to be found in Priscilla Netting Book, price 25 cents.

**Figure 24.  
Rose Pattern in  
Cameo  
Knitting  
for Towel.**

—No. 5 croch-  
et cotton  
in white and  
pink, and  
two steel  
knitting-  
needles No.  
14.

With white  
cotton, cast  
on 22 sts.

1st row —  
sl 1, o, n, k  
17, o, n. 2d

row—sl 1, o, n, p 16, k 1, o, n. 3d row—sl 1, o, n, k 4, lay in pink thread, k 2 pink, 1 white (w), 3 pink (p), 7 w, o, n. 4th row — sl 1, o, n, p 5 w, p 5 p, p 6 w, k 1, o, n. 5th row — sl 1, o, n, k 4, k 9 p, k 4 w, o, n. 6th row — sl 1, o, n, p 2, purl 4 p, 3 w, 4 p, 3 w, k 1, o, n. This completes four rows of the rose pattern; the rest is easily done by following the block pattern, Fig. 24A, knit 5th row up,

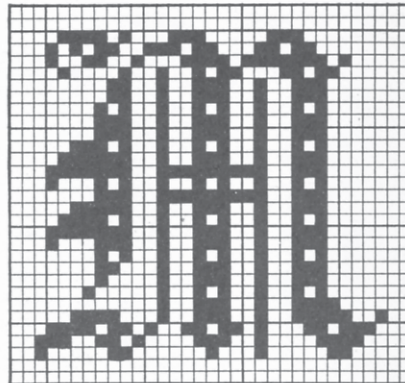


FIG. 23A. BLOCK PATTERN FOR FIG. 23



FIG. 24B. ACTUAL SIZE OF WORK IN FIG. 24  
See Fig. 24A

and purl 6th row down, etc. The fagoting is “sl 1, o, n” at the beginning of row, and “k 1, o, n” at the end of each row. The 16 sts between, that are knit and purled in alternate rows, are all that are given in the block pattern.

At the end of 20 rows, begin again at the 1st row of pattern, or work on to the end, which in 40 rows completes the pattern twice.

The detail, Fig. 24B, shows the work actual size.

**Figure 25. Pillow with Band of Cameo Knitting.** — No. 3 crochet cotton (écru for ground and



FIG. 24. ROSE PATTERN IN CAMEO KNITTING FOR TOWEL. See page 10 and Figs. 24A and 24B



green for design), and two steel knitting - needles No. 12.

For the band, cast on 34 sts of écreu. Knit odd rows, beginning at A, from right to left; purl even rows from left to right. *1st row*—Beginning at A, knit 8 écreu (e), 1 green (g), 1 e, 2 g, 2 e, 1 g, 1 e, 1 g, 1 e, 2 g, 4 e, 1 g, 9 e. *2d row*—Purl 5 e, 2 g, 3 e, 1 g, 2 e, 1 g, 1 e, 1 g, 3 e, 1 g, 2 e, 1 g, 1 e, 3 g, 7 e. Fifty-two rows make one repeat of the pattern; the 53d row is like the 1st row.

The narrow edge is knitted separately and overcast on each side of the band and around the edge of the pillow.

For the narrow lace edge, cast on 4 sts. *1st row*—sl 1, k 1, o, k 2. *2d row*—k 5. *3d row*—sl 1, k 2, o, k 2. *4th row*—k 6. *5th row*—sl 1, k 1, o2, n, o, k 2. *6th row*—k 5, p 1, k 2. *7th row*—k 8. *8th row*—



FIG. 25. PILLOW WITH BAND IN CAMEO KNITTING. See page 10 and Figs. 25A, 25B

Bind off 4, k 3. Repeat from 1st row.

**Figure 26.** Towel with Fagoted Insertion and Edging. — No. 5 crochet cotton and two steel knitting - needles No. 14. The insertion is  $1\frac{3}{4}$  inches wide.

Cast on 17 sts. *1st row*—sl 1, (o, n) 8 times, turn. *2d row*—sl 1, (o, n) 8 times. Repeat until required length is knitted, then bind off. Cast on odd number of stitches and any width can be made.

**Figure 26A.** Edging of Towel (Figure 26).—No. 5 crochet cotton and two steel knitting-needles No. 14.

Cast on 11 sts. *1st row*—sl 1, (o, n) 4 times, o2, k 2. *2d row*—k 3, p 1, k 1, (o, n) 4 times. *3d row*—sl 1, (o, n) 4 times, k 4. *4th row*—k 5, (o, n) 4 times. *5th row*—sl 1, (o, n) 4 times, o2, n, o2, n. *6th row*—k 2, p 1, k 2, p 1, k 1, (o, n) 4 times. *7th row*—sl 1, (o, n) 4 times, k 6.

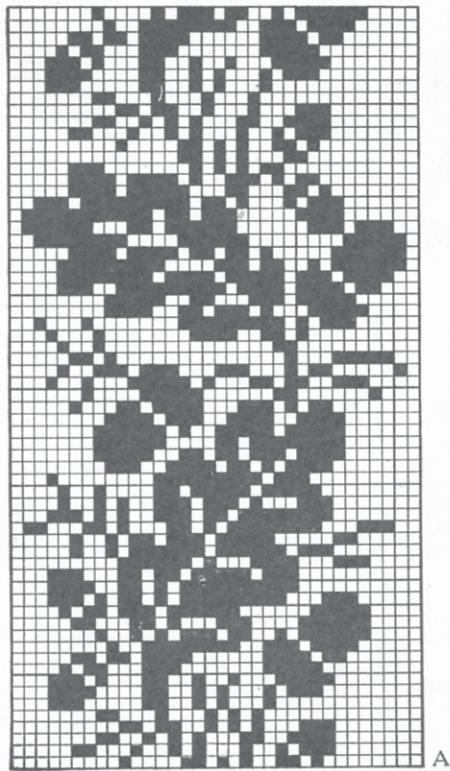


FIG. 25A. PATTERN FOR FIG. 25 See Fig. 25B



FIG. 25B. ACTUAL SIZE OF WORK IN FIG. 25. See Fig. 25A



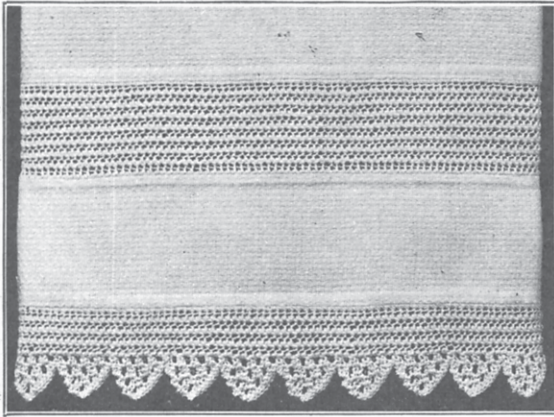


FIG. 26. TOWEL WITH FAGOTED INSERTION AND EDGING  
See page 11 and Fig. 26A

8th row—k 7, (o, n) 4 times. 9th row—sl 1, (o, n) 4 times, (o2, n) 3 times. 10th row—(k 2, p 1) 3 times, k 1, (o, n) 4 times. 11th row—sl 1, (o, n) 4 times, k 9. 12th row—k 10, (o, n) 4 times. 13th row—sl 1, (o, n) 4 times, (o2, n) 3 times, o2, k 3 tog. 14th row—(k 2, p 1) 4 times, k 1, (o, n) 4 times. 15th row—sl 1, (o, n) 4 times, k 12. 16th row—Bind off 10, k 2, (o, n) 4 times. The binding off should be loose enough to correspond in length with the opposite side of the scallop.

**Figure 27. Edging.**—No. 50 crochet cotton and two steel knitting-needles No. 14.

Cast on 16 sts and knit across plain. 1st row—fag (o2, p 2 tog), k 4, o, n, k 3, fag, k 1, o2, k 2. 2d row—k 2, (k 1, p 1, k 1) in the loop of o2, k 1, fag, k 9, fag. 3d row—Fag, k 3, o, n, o, n, k 2, fag, k 6. 4th row—k 6, fag, k 9, fag. 5th row—fag, k 2, (o, n) 3 times, k 1, fag, k 6. 6th row—Bind off 3, k 2, fag, k 9, fag. 7th row—fag, k 3, o, n, o, n, k 2, fag, k 1, o2, k 2. 8th row—k 2, (k 1, p 1, k 1) in the loop, k 1, fag, k 9, fag. 9th row—fag, k 4, o, n, k 3, fag, k 6. 10th row—k 6, fag, k 9, fag. 11th row—fag, k 9, fag, k 6. 12th row—Bind off 3, k 2, fag, k 9, fag. Repeat from 1st row.

**Figure 28. Insertion.**—No. 50 crochet cotton and two steel knitting-needles No. 14.

This insertion can be made any width by adding 5 sts for each added unit, and repeating the unit in parenthesis the same number of times. Cast on 15 sts and knit two foundation rows (A and B), then knit 6 rows of pattern. A—Knit 15 plain. B—Sl 1, k 5, (o2, n, k 3) o2, n, k 2.

1st row—sl 1, k 3, (drop loop, o2, n, k 3), drop loop, o2, n, k 4. 2d row—sl 1, k 5, (drop loop, o2, n, k 3), drop loop, o2, n, k 2. 3d row—sl 1, k 3,

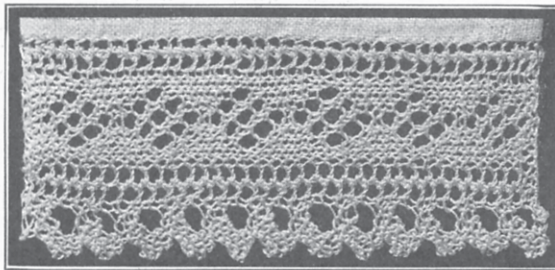


FIG. 27. EDGING. See page 12

(drop loop, k 2, o2, n, k 1), drop loop, k 2, o2, n, k 2. 4th row—sl 1, k 3, (drop loop, o2, n, k 3), drop loop, o2, n, k 4. 5th row—sl 1, k 5, (drop loop, o2, n, k 3), drop loop, o2, n, k 2. 6th row—sl 1, k 3, (drop loop, k 2, o2, n, k 1), drop loop, k 2, o2, n, k 2. Repeat these 6 rows for length required. The "dropped loop" is the second of the two "overs" on the left-hand needle.

**Figure 30. Edging.**—No. 50 crochet cotton and two steel knitting-needles No. 14.

Cast on 23 sts and knit two foundation rows (A and B), after which knit 12 rows of pattern. A—Knit 23 plain. B—Sl 1, k 5, o2, n, k 3, o2, n, k 3, o, n, k 1, o2, n, k 2.

1st row—o, n, k 2, p 1, k 2, o, n, k 4, drop loop, o2, n, k 3, drop loop, o2, n, k 4. 2d row—sl 1, k 5, drop loop, o2, n, k 3, drop loop, o2, n, k 3, o, n, k 1, o2, n, o2, n, k 1. 3d row—o, n, k 1, p 1, k 2, p 1, k 2, o, n, k 4, drop loop, k 2, o2, n, k 1, drop loop, k 2, o2, n, k 2. 4th row—sl 1, k 3, drop loop, o2, n, k 3, drop loop, o2, n, k 5, o, n, k 1, o2, n, k 2, o2, n, k 1. 5th row—o, n, k 1, p 1, k 4, p 1, k 2, o, n, k 6, drop loop, o2, n, k 3, drop loop, o2, n, k 2. 6th row—sl 1, k 3, drop loop, k 2, o2, n, k 1, drop loop, k 2, o2, n, k 3, o, n, k 1, o2, n, k 4, o2, n, k 1. 7th row—o, n, k 1, p 1, k 6, p 1, k 2, o, n, k 4, drop loop, o2, n, k 3, drop loop, o2, n, k 4. 8th row—sl 1, k 5, drop loop, o2, n, k 3, drop loop, o2, n, k 3, o, n, k 1, o2, n, k 6, o2, n, k 1. 9th

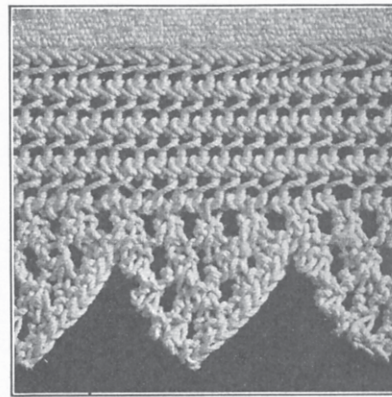


FIG. 26A. EDGING OF TOWEL, FIG. 26

row—o, n, k 1, p 1, k 8, p 1, k 2, o, n, k 4, drop loop, k 2, o2, n, k 1, drop loop, k 2, o2, n, k 2. 10th row—sl 1, k 3, drop loop, o2, n, k 3, drop loop, o2, n, k 5, o, n, k 2, over the first st on the left-hand needle sl the next 8 sts, then knit that st, o, n, k 1. 11th row—o, k 3 tog, k 4, o, n, k 6, drop loop, o2, n, k 3, drop loop, o2, n, k 2. 12th row—sl 1, k 3, drop loop, k 2, o2, n, k 1, drop loop, k 2, o2, n, k 3, o, n, k 1, o2, n, k 2. Repeat these 12 rows. The "dropped loop" is the second of the two "overs" on the left-hand needle.

**Figure 29. Mexican Lace.**—No. 60 crochet cotton and two steel knitting-needles No. 20.

When a fagot (fag) follows purling or another fagot, the thread should be thrown over once only. When it follows a stitch, knit plain or "bind off" the thread should be thrown over twice. After the "turn" (that is made between two fagots) the thread is brought forward and entirely around the needle. The "over" (before "sl 1, n," etc.) is made by carrying the thread across the needle to the back, and not entirely around the needle.

Cast on 19 sts. 1st row—sl 1, p 3, 2 fag, p 4, 3 fag, p 1. 2d row—p 1, 3 fag, p 4, 2 fag, p 4. 3d row—sl 1, p 3, 2 fag, p 3, p 2 tog, o, p 1, 2 fag, o, p and k 1. 4th row—p 1, o, p 2, 2 fag, p 2, fag, p 2, 2 fag, p 4. 5th row—sl 1, p 3, 2 fag, p 1, p 2 tog, o, p 3, 2 fag, o, p 3, p and k 1, turn, p 1, o, p 2, fag, turn, fag, o, p 3, p and k 1. 6th row—Bind off 5, fag, p 1, 2 fag,



p 4, 3 fag, p 4. 7th row — sl 1, p 3, 3 fag, p 4, 2 fag, p and k 1, fag, o, p and k 1, turn, p 3, fag, turn, fag, o, p 2, o, p and k 1. 8th row — Bind off 5, fag, o, p 2, 2 fag, p 3, p 2 tog, o, p 1, 2 fag, p 4. 9th row — sl 1, p 3, 2 fag, p 2, fag, p 2, 2 fag, p 2, p and k 1, fag, o, p and k 1, turn, p 3, fag, turn, fag, o, p 2, o, p and k 1. 10th row — Bind off 5, fag, o, p 4, 2 fag, p 1, p 2 tog, o, p 3, 2 fag, p 4. 11th row — sl 1, p 3, 2 fag, p 4, 3 fag, p 4, p and k 1, fag, o, p and k 1, turn, p 3, fag, turn, fag, o, p 2, o, p and k 1. 12th row — Bind off 5, fag, o, p 6, 3 fag, p 4, 2 fag, p 4. 13th row — sl 1, p 3, 2 fag, p 3, p 2 tog, o, p 1, 2 fag, p 6, p and k 1, fag, o, p and k 1, turn, p 3, fag, turn, fag, o, p 2, o, p and k 1. 14th row — Bind off 5, fag, o, p 8, 2 fag, p 2, fag, p 2, 2 fag, p 4. 15th row — sl 1, p 3, 2 fag, p 1, p 2 tog, o, p 3, 2 fag, p 8, p and k 1, fag, o, p and k 1, turn, p 3, fag, turn, fag, o, p 2, o, p and k 1. 16th row — Bind off 5, fag, o, sl 1, n, pass sl over n, p 7, 2 fag, p 4, 3 fag, p 4. 17th row — sl 1, p 3, 3 fag, p 4, 2 fag, p 6, p 2 tog, p 1, fag, o, p and k 1, turn, p 3, fag, turn, fag, o, p 2, o, p and k 1. 18th row — Bind off 5, fag, o, sl 1, n, sl over n, p 5, 2 fag, p 3, p 2 tog, o, p 1, 2 fag, p 4.

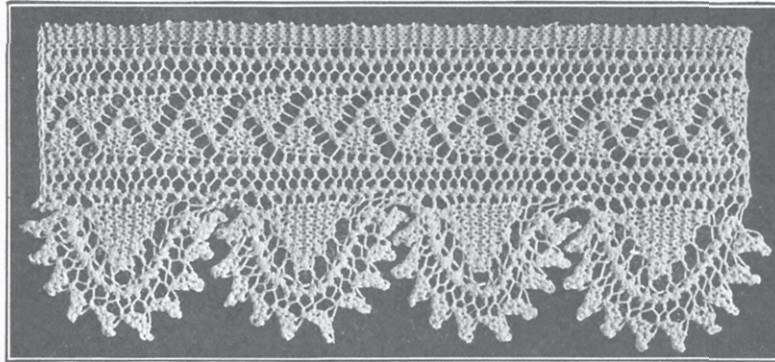


FIG. 29. KNITTED LACE, MEXICAN PATTERN. See page 12

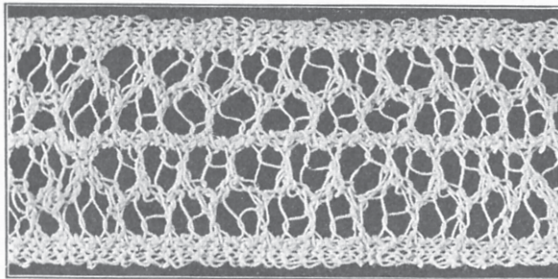


FIG. 28. INSERTION. See page 12 and Fig. 30

19th row — sl 1, p 3, 2 fag, p 2, fag, p 2, 2 fag, p 4, p 2 tog, p 1, fag, o, p and k 1, turn, p 3, fag, turn, fag, o, p 2, o, p and k 1. 20th row — Bind off 5, fag, o, sl 1, n, sl over n, p 3, 2 fag, p 1, p 2 tog, o, p 3, 2 fag, p 4. 21st row — sl 1, p 3, 2 fag, p 4, 3 fag, p 2, p 2 tog, p 1, fag, o, p and k 1, turn, p 3, fag, turn, fag, o, p 2, o, p and k 1. 22d row — Bind off 5, fag, o, sl 1, n, sl over n, p 1, 3 fag, p 4, 2 fag, p 4. 23d row — sl 1, p 3, 2 fag, p 3, p 2 tog, o, p 1, 2 fag, p 2 tog, p 1, fag, o, p and k 1, turn, p 3, fag, turn, fag, o, p 2, o, p and k 1. 24th row — Bind off 5, fag, p 2 tog, 2 fag, p 2, fag, p 2, 2 fag, p 4. 25th row — sl 1, p 3, 2 fag, p 1, p 2 tog, o, p 3, 2 fag, p 3 tog, p 1. 26th row — p 2 tog, 2 fag, p 4, 3 fag, p 4. 27th row — sl 1, p 3, 3 fag, p 4, 2 fag, p 1. 28th row — p 1, 2 fag, p 3, p 2 tog, o, p 1, 2 fag, p 4. 29th row — sl 1, p 3, 2 fag, p 2, fag, p 2, 2 fag, p 1. 30th row — p 1, 2 fag, p 1, p 2 tog, o, p 3, 2 fag, p 4. Repeat these 30 rows for the length required.

**Figure 31. Portuguese Lace.** — For this handsome lace use No. 5 crochet cotton and three steel knitting-needles No. 10.

Cast on 18 sts and knit two foundation rows (A and B) as follows: A—k 18 plain. B—k 5, n, k 2, o, k 1, n, o, n, k 1, o, k 3.

Then follow 22 rows which complete the pattern. 1st row—sl 1, k 2, o, drop loop, k 2, k front and back

of next st, k 3, twist 2 over 3 as follows: sl 2 sts to the 3d needle, and leave at the front of the work, k next 3, k 2 on 3d needle, o, n, k 1. Turn and cast on 2 sts in this way, (k the last st, leaving it on the needle, place the new st on the needle) twice. 2d row—(Without turning) bind 2 off as follows: k 2, sl 1st over 2d, k 3d st, sl 2d over 3d, k 6, n, o, n, k 4, k and p the loop, k 3. 3d row—sl 1, k 1, n, o, n, k 10, o, n, k 1. 4th row—k 5, o, k 1, o, k 1, n, o, n, k 3, o, drop loop, k 3. 5th row — sl 1, k 2, k and p 1, k 7, k front and back of next st, k 1, k front and back, k 2, o, n, k 1, cast on 2, as in 1st row. 6th row — Bind off 2, as in 2d row, k 4, o, k 2, o, n, k 1, o, k 1, n, o, n, k 1, n, o, n, k 2. 7th row — sl 1, k 2, o, drop loop, k 6, (o, n, k 1) 4 times. 8th row—k 5, (o, n, k 1) 3 times, o, n, k 2, k and p 1, k 3. 9th row—sl 1, k 1, n, o, n, k 5, (o, n, k 1) 4 times, cast on 2. 10th row — Bind off 2, k 4, (o, n, k 1) 3 times, o, n, k 2, o, drop loop, k 3. 11th row—sl 1, k 2, k and p 1, k 6, (o, n, k 1) 4 times. 12th row—k 5, (o, n, k 1) 4 times, n, o, n, k 2. 13th row—sl 1, k 2, o, drop loop, k 6, (o, n, k 1) 4 times, cast on 2. 14th row—Bind off 2, k 4, (o, n, k 1) 3 times, o, n, k 2, k and p 1, k 3. 15th row —sl 1, k 1, n, o, n, k 5, (o, n, k 1) 4 times. 16th row — k 5, (o, n, k 1) 3 times, o, n, k 2, o, drop loop, k 3. 17th row—sl 1, k 2, k and p 1, k 6, o, n, k 1, n, k 1, (o, n, k 1) twice, cast on 2. 18th row—Bind off 2, k 4, o, n, k 1, n, o, n, k 1, o, k 3, n, o, n, k 2. 19th row — sl 1, k 2, o, drop loop, k 7, o, n, k 2, (o, n, k 1) twice. 20th row—k 5, o, n, n, o, n, k 1, o, k 5, k and p 1, k 3. 21st row—sl 1, k 1, n, o, n, k 7, n, k 1, n, k 1, o, n, k 1. 22d row — k 5, n, k 2, o, k 1, n, o, n, k 1, o, drop loop, k 3.

Repeat these 22 rows for the required length, and

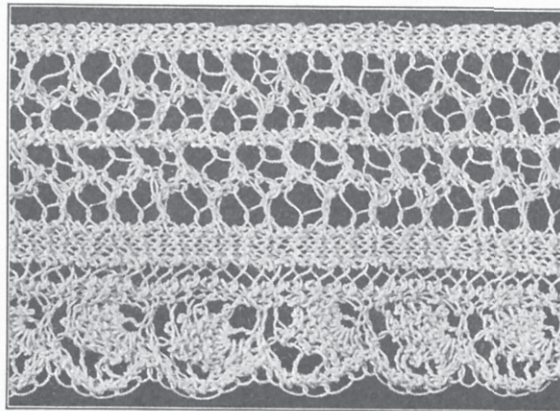


FIG. 30. EDGING. See page 12 and Fig. 28



after finishing the last scallop, make the 1st and 2d rows before binding off.

**Figure 32. Insertion.** — No. 8 spool cotton and two steel knitting-needles No. 14.

Cast on 22 sts. *1st row*—k plain. *2d row*—sl 1, k 1, o, n, o, n, k 11, o, n, o, n, k 1. *3d row*—Like 2d row. *4th row*—sl 1, k 1, o, n, o, n, k 2, (o3, k 1) 7 times, k 2, o, n, o, n, k 1. *5th row*—sl 1, k 1, o, n, o, n, k 1, sl 1, (drop o3 off the needle, sl 1 long st off to right needle) 7 times, (making 8 long sts on right needle); lift right 4 long sts over left 4 with left needle and slip remaining 4 to left needle and knit these 8 long sts, k 2, o, n, o, n, k 1. *6th, 7th, 8th, and 9th rows*—Like 2d row. Repeat from 4th row to 9th row, inclusive.

**Figure 33. Edging.** — No. 8 spool cotton and two steel knitting-needles No. 14.

Cast on 20 sts. *1st row*—k plain. *2d row*—sl 1, k 1, o, n, o, n, k 14. *3d row*—k 5, (o3, k 1) 7 times, k 3, o, n, o, n, k 1. *4th row*—sl 1, k 1, o, n, o, n, k 2, sl 1, (drop o3 off the needle, sl 1 long st off to right needle) 7 times, (making 8 long sts on right needle); lift right 4 long sts over left 4 with left needle and sl remaining 4 to left needle and knit these 8 long sts, k 4. *5th row*—k 2, cast

k 1, k and p 1. *10th row*—k 3, 3 fag, turn, 3 fag, k 2, k and p 1, turn, cast off 3, 3 fag, o, k 3, fag, k 1, n, o, k 3, fag, k 2. *11th row*—k 2, fag, k 4, o, n, fag, k 3, k and p 1, 3 fag, k and p 1. *12th row*—k 2, 3 fag, turn, 3 fag, k 1, k and p 1, turn, k 3, 3 fag, o, k 5, fag, k 2, o, n, k 2, fag, k 2. *13th row*—k 2, fag, k 1, n, o, k 3, fag, k 5, k and p 1, 3 fag, k 2, k and p 1. *14th row*—Cast off 3, 3 fag, turn, 3 fag, k and p 1, turn, k 2, 3 fag, o, k 7, fag, k 4, o, n, fag, k 2. *15th row*—k 2, fag, k 2, o, n, k 2, fag, k 7, k and p 1, 3 fag, k 1, k and p 1. *16th row*—k 3, 3 fag, turn, 3 fag, k 2, k and p 1, turn, cast off 3, 3 fag, o, k 9, fag, k 1, n, o, k 3, fag, k 2. *17th row*—k 2, fag, k 4, o, n, fag, k 9, k and p 1, 3 fag, k and p 1. *18th row*—k 2, 3 fag, turn, 3 fag, k 1, k and p 1, turn, k 3, 3 fag, o, k 11, fag, k 2, o, n, k 2, fag, k 2. *19th row*—k 2, fag, k 1, n, o, k 3, fag, k 11, k and p 1, 3 fag, k 2, k and p 1. *20th row*—Cast off 3, 3 fag, turn, 3 fag, k and p 1, turn, k 2, 3 fag, o, k 13, fag, k 4, o, n, fag, k 2. *21st row*—k 2, fag, k 2, o, n, k 2, fag, k 13, k and p 1, 3 fag, k 1, k and p 1. *22d row*—k 3, 3 fag, turn, 3 fag, k 2, k and p 1, turn, cast off 3, 3 fag, o, k 15, fag, k 1, n, o, k 3, fag, k 2. *23d row*—k 2, fag, k 4, o, n, fag, k 15, k and p 1, 3 fag, k and p 1. *24th row*—k 2, 3 fag, turn, 3 fag, k 1, k and p 1, turn, k 3, 3 fag, o, k 17, fag, k 2, o, n, k 2, fag, k 2. *25th*

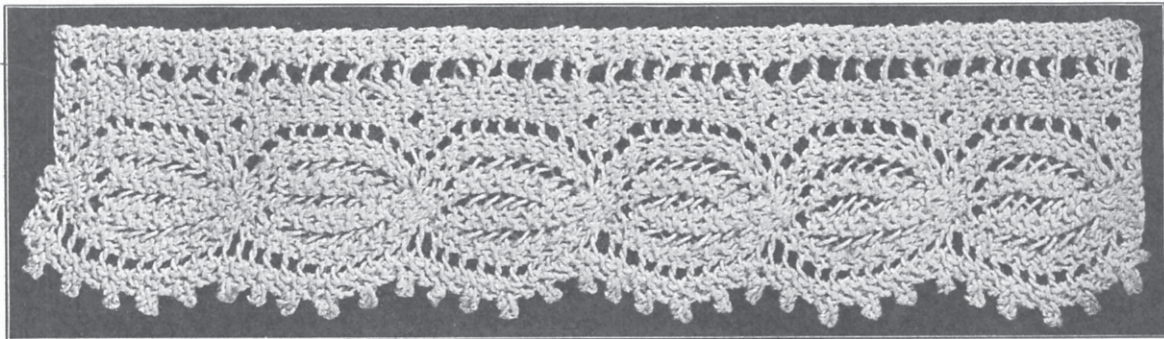


FIG. 31. KNITTED EDGING, PORTUGUESE PATTERN. See page 13

on 4 sts, (to cast on, turn the work, \* k the last st, leaving it on the left needle, place the new st on the left needle \*, make from \* to \* 4 times, turn), k 13, o, n, o, n, k 1. *6th row*—sl 1, k 1, o, n, o, n, k 18. *7th row*—Bind off 4, k 14, o, n, o, n, k 1. *8th row*—Like 2d row. Repeat from 3d row.

**Figure 34. Chinese Lace.** — No. 100 crochet cotton or No. 30 spool cotton and two steel knitting-needles No. 20.

The illustration is about half actual width. Fagoting is made as follows, when "fag" is directed: o2, p 2 tog. "2 fag" equals o2, p 2 tog, o, p 2 tog. "3 fag" equals o2, p 2 tog, o, p 2 tog, o, p 2 tog. When one fag follows another, throw thread over but once for the second and third fag, as the thread is already forward from the previous fag, but it should be "over twice" for the first fag.

Cast on 14 sts. *1st row*—k 2, fag, k 1, n, o, k 3, fag, k and p 1 st, k and p 1. *2d row*—k 4, fag, k 4, o, n, fag, k 2. *3d row*—k 2, fag, k 2, o, n, k 2, fag, k and p 1, k 2, k and p 1. *4th row*—k 3, fag, o, k 1, fag, k 1, n, o, k 3, fag, k 2. *5th row*—k 2, fag, k 4, o, n, fag, k and p 1, k 1, fag, k 2, k and p 1. *6th row*—Cast off 3, 2 fag, o, k 1, fag, k 2, o, n, k 2, fag, k 2. *7th row*—k 2, fag, k 1, n, o, k 3, fag, k and p 1, k 1, 2 fag, k and p 1. *8th row*—k 2, 3 fag, o, k 1, fag, k 4, o, n, fag, k 2. *9th row*—k 2, fag, k 2, o, n, k 2, fag, k 1, k and p 1, 3 fag,

*row*—k 2, fag, k 1, n, o, k 3, fag, k 1, (o, n) 8 times, o, k and p 1, 3 fag, k 2, k and p 1. *26th row*—Cast off 3, 3 fag, turn, 3 fag, k and p 1, turn, k 2, 3 fag, turn, 3 fag, k 1, k and p 1, turn, k 3, 3 fag, o, sl 1, n, pass sl over n, k 17, fag, k 4, o, n, fag, k 2. *27th row*—k 2, fag, k 2, o, n, k 2, fag, k 16, n, k 1, 3 fag, k 2, k and p 1. *28th row*—Cast off 3, 3 fag, turn, 3 fag, k and p 1, turn, k 2, 3 fag, turn, 3 fag, k 1, k and p 1, turn, k 3, 3 fag, o, sl 1, n, pass sl over n, k 15, fag, k 1, n, o, k 3, fag, k 2. *29th row*—k 2, fag, k 4, o, n, fag, k 14, n, k 1, 3 fag, k 2, k and p 1. *30th row*—Cast off 3, 3 fag, turn, 3 fag, k and p 1, turn, k 2, 3 fag, o, sl 1, n, pass sl over n, k 13, fag, k 2, o, n, k 2, fag, k 2. *31st row*—k 2, fag, k 1, n, o, k 3, fag, k 12, n, k 1, 3 fag, k 1, k and p 1. *32d row*—k 3, 3 fag, turn, 3 fag, k 2, k and p 1, turn, cast off 3, 3 fag, o, sl 1, n, pass sl over n (or k 3 tog), k 11, fag, k 4, o, n, fag, k 2. *33d row*—k 2, fag, k 2, o, n, k 2, fag, k 10, n, k 1, 3 fag, k and p 1. *34th row*—k 2, 3 fag, turn, 3 fag, k 1, k and p 1, turn, k 3, 3 fag, o, k 3 tog as in 32d row, k 9, fag, k 1, n, o, k 3, fag, k 2. *35th row*—k 2, fag, k 4, o, n, fag, k 8, n, k 1, 3 fag, k 2, k and p 1. *36th row*—Cast off 3, 3 fag, turn, 3 fag, k and p 1, turn, k 2, 3 fag, o, k 3 tog as in 32d row, k 7, fag, k 2, o, n, k 2, fag, k 2. *37th row*—k 2, fag, k 1, n, o, k 3, fag, k 6, n, k 1, 3 fag, k 1, k and p 1. *38th row*—k 3, 3 fag, turn, 3 fag, k 2, k and p 1, turn, cast off 3, 3 fag,