

Terrace Textures

BASIC DESIGN SERIES

Copyright 1957

Thread Horizons Unlimited
for
Handweavers



TERRACE PUBLISHING COMPANY

4038 S. W. Garden Home Road

PORTLAND 19, OREGON

COTTON BOUCLE

Warp and Weft: Cotton Boucle.
Threading: Twill.
Standard Tie-Up.

Large Thread— 925 Yd. Lb.
Small Thread—2800 Yd. Lb.

Novelty yarns generally are shown to advantage in the simple tabby or twill weaves to reveal their inherent interest. The use of contrasting sizes of yarns offers the weaver much room for ingenuity in their placement, both in the warp and in the weft. Stripes, checks, or the mixing at random of several sizes and textures are suggested.

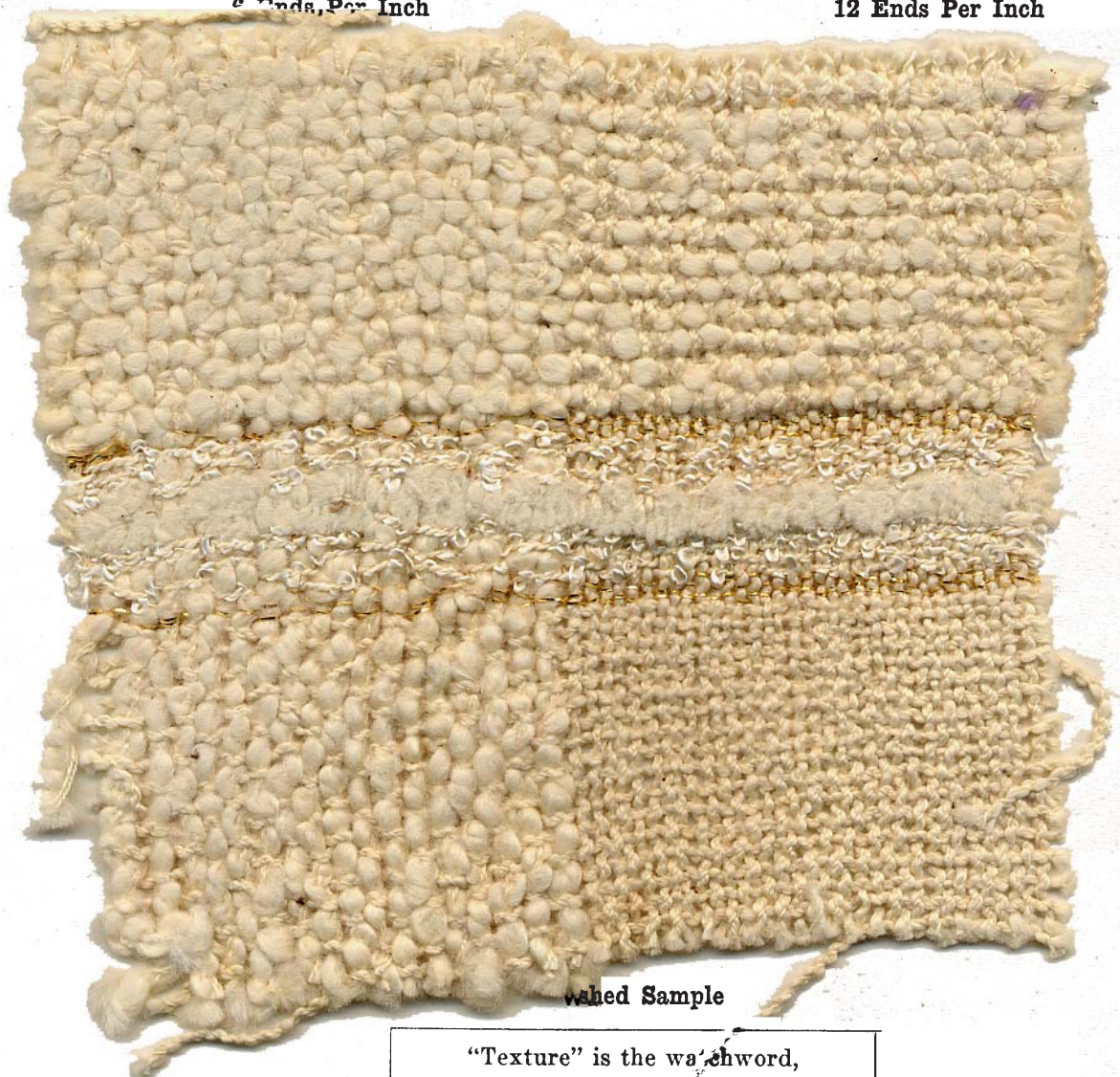
The sample is purposely shown in a sparse reed setting for comparison. Closer setting of the warp will result in a heavier material, if desired.

THE SAMPLE SHOWN

Weave: Tabby.
Reed Used 9 dent.
Take Up and Shrinkage: . . . 1/7 of warp and 1/7 of weft.
Tension: Use less tension on boucle warp.
Beat: Do not overbeat for best effect. Approximately "square" is a good rule.
Other Weft: Large size cotton chenille. (230 yd. lb.)

**Warp Set
6 Ends Per Inch**

**Warp Set
12 Ends Per Inch**



Washed Sample

"Texture" is the watchword,
As modern as today
For your drapes and yardage
Weave it in Boucle.

COTTON

1600 Yd. Lb.
Standard Tie-Up

Warp: Carpet Warp.
*Pattern Thread: Wool.
Tabby Thread: 20-2 Cotton.

Warp Set
15 Ends Per Inch

Threading for Pattern (Thousand Flowers)

								4	4		4	4
			3					3	3		3	3
2	2	2	2	2						2		
1	1			1	1							Repeat

Treading for Pattern

Alternate A and B tabby between all pattern shots.

Sinking Shed:

Rising Shed:

2,3 — 3 x
Tabby — 4 x
1,2 — 3 x
3,4 — 2 x
1,2 — 3 x
Tabby — 4 x
2,3 — 3 x

1,4 — 3 x
Tabby — 4 x
3,4 — 3 x
1,2 — 2 x
3,4 — 3 x
Tabby — 4 x
1,4 — 3 x

1,2 — 3 x
3,4 — 3 x
1,2 — 3 x

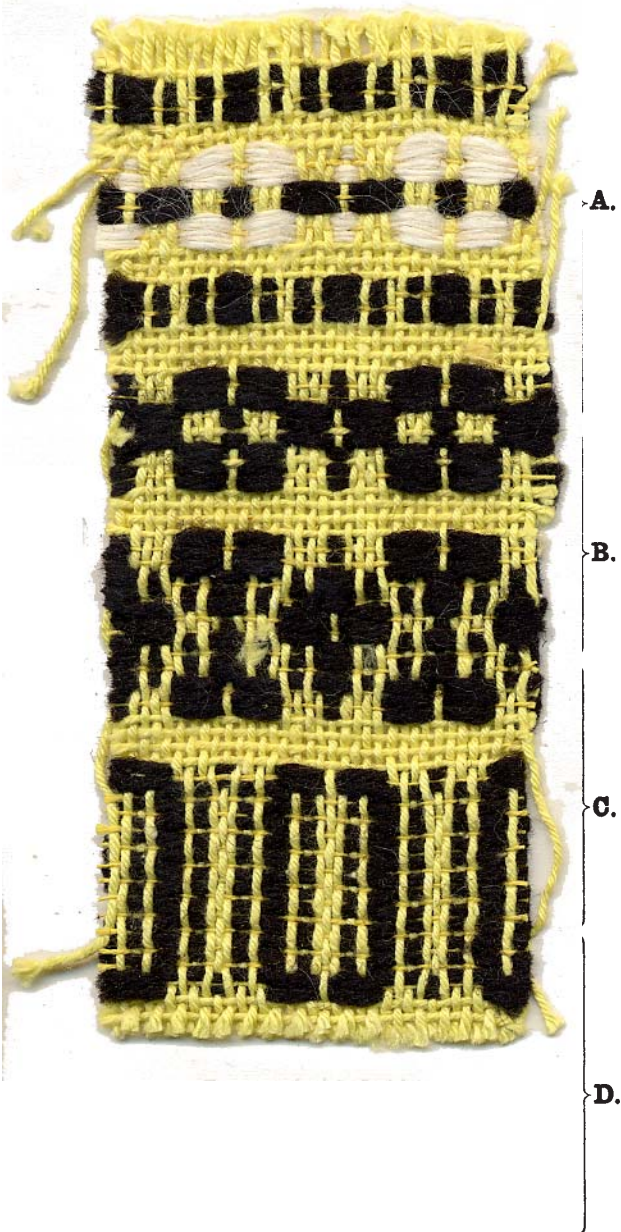
3,4 — 3 x
1,2 — 3 x
3,4 — 3 x

1,2 — 3 x
2,3 — 3 x
3,4 — 3 x
2,3 — 3 x
1,2 — 3 x

3,4 — 3 x
1,4 — 3 x
1,2 — 3 x
1,4 — 3 x
3,4 — 3 x

3,4 — 2 x
1,4 — 12 x
3,4 — 2 x

1,2 — 2 x
2,3 — 12 x
1,2 — 2 x



Unwashed Sample
Steamed Pressed

This delightful well-balanced pattern will suggest itself for many projects.

Beat moderately. Be sure to alternate the A and B tabby shots accurately. Rayon floss as shown in the sample is doubled as weft. Dry clean.

*Pattern Threads: 4-ply Worsted Wool
Rayon Floss

1070 Yd. Lb.
1600 Yd. Lb.

A thread for beginners,
And others as well,
Its possibilities so many
We're sure you'll say "it's swell".

LINEN

Warp: 7/2 Linen
Threading: Twill

1050 Yd. Lb.
Standard Tie-Up

Another large member of the linen family takes a bow. For those who want frank, unpretentious simplicity in table mats this yarn always appeals. Because detail is lost in the larger threads, the twill weave is always complimentary.

FOR 6 TWILL MATS—Sample B

Size 13x20½ Inches, Including Fringe Finished

Amount: 1½ lbs. of one color for warp and weft.

Warp: *4⅔ yds. of 135 ends. Set 15 inches in reed.

Weave: 16 shots per inch, 21 inches for each mat. Place strips of heavy paper 2 inches wide between mats. This allows a 1 inch fringe.

Finish: Remove material from loom and machine stitch along end weft threads adjacent to paper strips. Whip over machine stitching with 20/2 linen. Remove paper strips and cut down center of the unwoven warp threads.

Shrinkage

and Take-Up: 2 inches in width and 2½ inches in length per mat.

Laundry: Always iron while still damp. Do not allow wrinkles to dry in the heavy mats.

Color in Twill

Samples C, D, and E are on an alternate two-color warp. They show bold simple ways of combining colors, and are useful in many projects. Upholstery, drapery, suitings may employ them to advantage in various types of materials.

If yarns could speak,
This one would say:—
“I’m at my best
The simplest way.

A.

Weft:

7/2

Tabby



B.

Weft:

7/2

Twill



C.

Twill

D.

Tabby

E.

Twill

*Loom Waste Allowance of
¾ Yd. Included

RAYON

Standard Tie Up

Threading: Twill

Warp: Sample A—40/2 Linen—6000 Yd. Lb.

Sample B—2-32 Wool —8960 Yd. Lb.

Rayon Novelty—4500 Yd. Lb.

Rayon, one of the most versatile of the weaving threads, combines well with other yarns, yet possesses intrinsic beauty.

The fine linen warp in Sample A gives a crisp look to table settings. The irregularity of the weft material results in a lace-like appearance that is effective in contrast with plain weft.

Use on 20/2 cotton for aprons, dress, or blouse material. Starch lightly when laundering.

The shrinkage of rayon is slight.

As a companion to wool the novelty rayon forms a happy combination. The brilliance of the rayon sets off the dull richness of the wool with a resulting depth of texture. It is practical as warp and can be used by itself or as shown alternated with another thread.

One outstanding use the Rayon Novelty offers is that of extending a plain yarn by alternating in the weft. The larger the plain yarn the more prominent is the horizontal ribbed effect. Example: "Fabri" set 24 per inch. Weft of same material alternated with Rayon Novelty. Try bieve wool with white rayon.

Again the tabby weave is correct to bring out the best in this thread, usually in the simplest presentation.

For 5 Yards of 35-Inch Finished Material Sample B (4)

Amount: $\frac{3}{4}$ lb. 2-32 Wool. 1 lb. Novelty Rayon.

Warp: *6 yds. of 1110 ends. Set 37 inches wide in reed.

Alternate rayon novelty with wool.

Weft: Use 2-32 wool single. Beat 24 shots per inch.

Beat very firmly if heavier material is desired.

Finish: Wash and press with moderate iron.

"If it's glamour you want without great expense
We make a suggestion of good common sense:
Dye it and try it, and you will soon see
Great results from small effort,
And proud you will be!"

Warp Set
24 Ends Per Inch

(1)

A.

(2)

Washed Sample
Warp Set
30 Ends Per Inch

(3)

B.

(4)

Finished Sample

*Loom Waste Allowance of $\frac{3}{4}$ Yd.
included.

LINEN

Warp: 9/2 Linen
Threading: Twill

1200 Yd. Lb.
Standard Tie-Up

Warp Set
10 Ends Per Inch



Washed Sample

Warp Set
15 Ends Per Inch



Washed Sample

*Loom wastage allowance
of 1/4 Yd. Included.

(a)

Weft:
9/2

The yarn shown in woven sample, designated "towel linen", is characterized by softness and slack twist in spinning. The woven material reflects a gleaming softness. Towels of this can boast their frank coarse texture, for they are delightfully absorbent, increasing in beauty with every washing, and are appealing for the practical.

The 6/2 used as filler is useful where the heavier towel is desired.

TOWELS

For 12 Towels (Sample A)

13 x 20 Inches Finished

Amount: 1 lb. for warp. 1 lb. for weft.

Warp: *8½ yds. of 140 ends. Set 14 inches wide in reed.

(b)

6/2

Weave: 21 inches. Leave 2 inches unwoven, inserting stiff paper in warp to keep threads from sliding until sewed.

Finish: Hemstitch at base of fringe before cutting.

To retain attractive shape and resist soiling coarse type mats are generally better in the close reed setting.

MATS

For 8 Mats (Sample D)

13 x 20 Inches Finished

Amount: 1365 yds. for warp. 600 yds. for weft.

(c)

6/2

Warp: *6½ yards of 210 ends. Set 14 inches wide in reed.

Weave: 21 inches long. Insert stiff paper in 2 inch space left unwoven for fringe.

Treadle: 1,2—1 x

3,4—1 x

Repeat

Beat: Beat very hard. Use 9 or more shots per inch.

Laundry

Note: For all linens wash in hot water. Iron well before completely dry.

(d)

1½

6/2: 900 yards per pound.

1½: 450 yards per pound.

"The timid guest who shies away
From the dainty guest towel rack
Finds towels like these are sure to please,
They'll be used—not just pushed back."

WOOL

Warp: 2-32 Wool — 8960 Yd. Lb.
Weft: Same.

Warp Set
23 Ends Per Inch

Pattern Thread:
Baby Jumbo Wool
Supported Lurex

Dirndl skirts have timeless charm and offer a challenge for craftsmanship and display of color. Let them be lively by choosing pattern threads with loft, striking texture, and color.

PATTERN THREADING

	4 4 4 4	4 4	4 4	4 4
	3 3 3 3 3 3 3 3 3 3		3 3	
	2 2 2 2 2 2 2 2	2 2 2	2 2	2 2 2
Repeat		1 1 1 1 1 1	1	1 1 1 1 1 1

Whig Rose

Warning: Be sure to alternate A and B tabby between all pattern shots.

PATTERN TREADLINGS

Sinking Shed:	Rising Shed:	Sinking Shed:	Rising Shed:
A.		C.	
3,4 — 1 x	1,2 — 1 x	3,4 — 1 x	1,2 — 1 x
1,2 — 1 x	3,4 — 1 x	2,3 — 2 x	1,4 — 2 x
3,4 — 1 x	1,2 — 1 x	3,4 — 1 x	1,2 — 1 x
B.		D.	
1,4 — 2 x	2,3 — 2 x	Large Rose (not shown)	
1,2 — 2 x	3,4 — 2 x	3,4 — 3 x	1,2 — 3 x
1,4 — 1 x (a)	2,3 — 1 x	2,3 — 3 x	1,4 — 3 x
1,2 — 2 x	3,4 — 2 x	3,4 — 1 x	1,2 — 1 x
1,4 — 2 x	2,3 — 2 x	2,3 — 3 x	1,4 — 3 x
		3,4 — 3 x	1,2 — 3 x
3,4 — 1 x	1,2 — 1 x	E.	
2,3 — 1 x	1,4 — 1 x	Border (not shown)	
1,2 — 1 x (b)	3,4 — 1 x	2,3 — 1 x	3,4 — 1 x
1,4 — 1 x	2,3 — 1 x	3,4 — 2 x	2,3 — 2 x
1,2 — 1 x	3,4 — 1 x	2,3 — 1 x	1,2 — 1 x
2,3 — 1 x	1,4 — 1 x		
3,4 — 1 x	1,2 — 1 x		

Repeat (a)

FOR 2 DIRNDL SKIRTS

- Amount: 1 lb. 2-32 Wool. 8 oz. Pattern Thread.
- Warp: *5 yards of 828 ends. Set 36 inches wide in reed.
- Beat: About 25 shots per inch of fine wool.
- Weave: 5 inches for band; 36 inches for each skirt side. Suggest pattern begin 5 inches above turn-up for hem (also 5 inches wide).
- Sewing: Interline belt. Use lightweight zipper closing. Shirr to gather with 3 stitchings for smooth fit.
- *Loom Waste Allowance of 3/4 Yds. Included.

Use soft material, bright and gay,
Let whim and fancy have their way;
Weavers who remember these—
Will have the kind of skirts that please.



Sample Steam Pressed



12/1
20/1

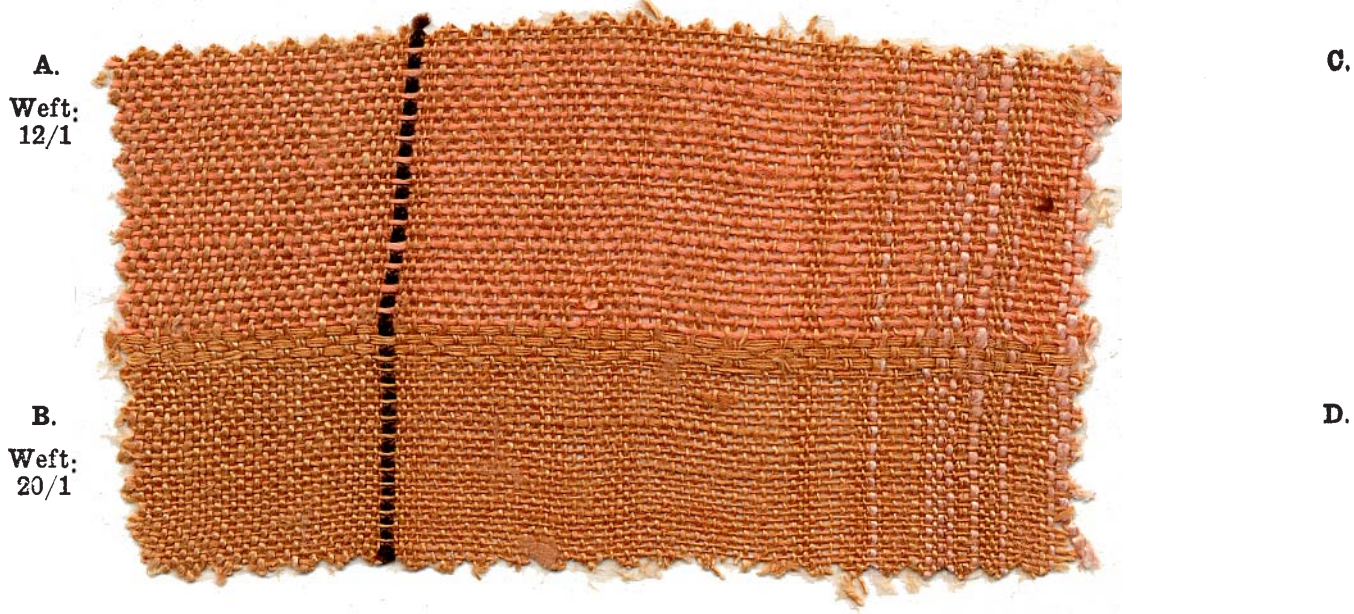
LINEN

Warp: Weft Linen (*Wet Spun)

Threading: Twill
12/1 Warp Set
23 Ends Per Inch

20/1 Warp Set
23 Ends Per Inch

12/1—3600 Yd. Lb.
20/1—6000 Yd. Lb.
Mixed Warp Set
23 Ends Per Inch



Washed Sample

Weft linen (unplied), used as warp for table linens, is advantageous where a soft material is desired. The use for napkins immediately suggests itself.

*It is important to use wet spun linen. This is a long fiber yarn, treated to have a semi-glazed surface. Before washing, due to this treatment, the yarn feels less soft and lacking gloss, but these soon appear after laundering once or twice. It is stronger and resists beater wear as warp, with little fuzzing. All "singles" used as warp do this to some extent. A little hair-stay brushed lightly on the warp keeps lint down.

Keep Warp Tension Loose

EASY RANDOM WARPING (C-D as Place Mats)

Warp Per Inch: 6 ends 7/1; 8 ends 12/1; 10 ends 20/1.

Threading: Warp sizes in random arrangement. The secret of effectiveness is by contrast of size; as: 2 heavy threads adjacent the smallest, with no more than 3 ends of a size adjacent. Occasionally use 2 or 3 ends in one heddle as one end.

Sleying: Here the thick and thin effect is determined. No set arrangement is necessary. Two arrangements may be alternated in warping such as:

- a) 3-3-3-1-1-0-1-0-3-0-1-1-2-2-2 (The number indicates ends
- b) 0-2-1-1-3-0-3-1-2-1-3-2-1-2-1 per dent of reed (15 dent).)

Beat: Lightly for lace appearance.

Variation: For thick wet stripes: Treadle 1, 2-1x; 3, 4-1x; 1, 2-1x; 3, 4-1x. Beat hard.

Here's trick that you can do,
It's lots of fun, saves money too,
Warp up all those odds and ends,
Varied sizes, or color blends,
Mix the weft or leave it plain,
Surprise in store for you again!

WOOL

WOMEN'S SUITING

Warp: 2-32 Soft Wool
Weft: 2-18 Worsted
Standard Tie-up

Approx. 8960 Yd. Lb.
5000 Yd. Lb.

Threading Diagram

4	4	4	44	4	
3	3	33	3	3	
2	22	2	2	2	
11	1	1	1	1	Repeat

Irregular Twill

Pattern Treading

Read left to right:

4* 4 4 4 4
3 3* 3 3 3
2 2 2* 2 2
1 1 1 1* 1 and repeat

*Throw shuttle 3 times in same shed.

Here is the answer to simplicity with a flair—the ever popular twill used to create a novel effect. The weave affords excellent opportunity to combine or blend color or texture in the warp, and yet retain that “all over” look without lines or stripes.

For 6 Yards Finished Material (33 Inches Wide) Sample B

Amount: 1 lb. warp. 1½ lb. weft.

Warp: †7¼ yds. of 1080 ends. Set 36 inches wide in reed.

Beat: Do not overbeat. Material should be supple. About 30 picks per inch average, including triple shots.

MEN'S SUITING

Warp and Weft Material: 2-24 Worsted Approx. 6000 Yd. Lb.

Threading: Twill

Amount: 1¾ lb. warp. 1¾ lb. weft.

Warp: Alternate double-ends of two colors. Treat each as one, putting both threads through same heddle eye. Warp 234 double ends. Set 33 inches wide in reed. (18 double per inch.)

Weave: Wind bobbins with double thread.

Use 2 shuttles. Alternate colors in twill.

Beat: Do not overbeat. Keep twill line about 45° angle.

The double warp threads, set more loosely, are suggested if yarns have a tendency toward surface fuzziness. They avoid “sticking” in treading, yet give attractive weight material. Again, colors can be combined to advantage.

Want a weave for draperies,
Or material for a chair?
The ones we show upon this page
Do double duty there!

Warp Set 30 Ends Per Inch



A.
Weft
2-18
Tabby

Washed and Steam Pressed

Warp Set 18 Double Ends Per Inch



C.
Weft
2-24
Alt.
Color
Twill

Washed and Steam Pressed

D.
Tabby
of
One
Color

†Loom Waste Allowance
of ¾ Yd. Included.