

COATING AND SUITING MATERIALS

These materials have been selected because they provide in their types good foundation warps on which can be laid numerous wefts in size, color, and arrangement, all with a characteristic handwoven touch. The patterns are simple; the results, lovely wearable fabrics. Coatings call for richness and light weight, but suitings demand a certain firmness — if you want the tailor's respect!

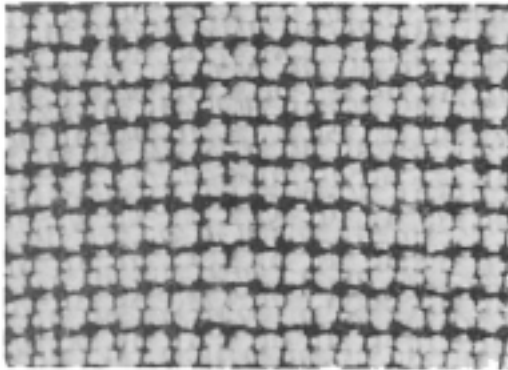
COATINGS

The Light Color Dominance

Warp: Large White Wool Yarn—The kind used was a 2 ply mohair type about 1250 yds. per lb. from Contessa Yarns S/27. It bulks about the size of Perle 3 cotton. Other similar sized wools are suitable such as Spanish Sock Yarn S/80; others S/74;77.

2-32 Wool or similar size small yarn, in Midnight Blue or Black.

Threading: Twill.

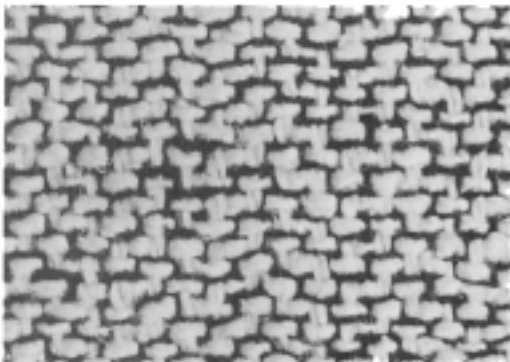


Coating No. 1

Treadle: Tabby. 1,3 — 1 x; 2,4 — 1 x; repeat.

Use 2 shots of dark wool, then
2 shots of white. (8 shots per inch).

Beat: Firmly.



Coating No. 3

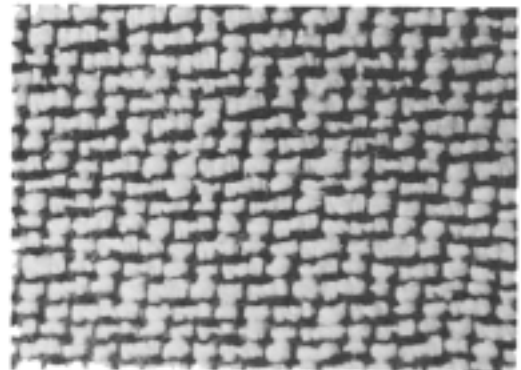
Treadle: 1,2 — 1 x White Wool
2,3 — 1 x Dark Small Wool
3,4 — 1 x White Wool
4,1 — 1 x Dark Small Wool
Repeat (11 shots white per inch).

Sett: Two ends of the dark wool are alternated with 1 end of white. Place a single end in each heddle.

Use a 12 dent reed; and sley the reed:
1 end white; 2 ends dark; repeat.

Weft: Rayon Wool Binder—This pebbly off-white yarn makes a lovely semi-rough surface, extra light weight. From Oregon Ceramic Studio, Corbett St., Portland, Oregon.

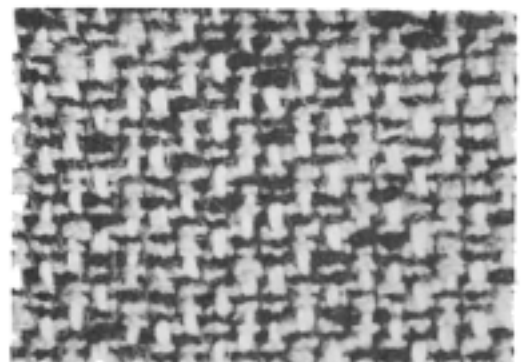
2-32 Wool—Dark value, same color as warp or other of dark value.



Coating No. 2

Treadle: (a) 1,2 — 1 x White Wool
2,3 — 1 x Dark Small Wool
(b) 3,4 — 1 x " " "
(c) 4,1 — 1 x White Wool
(d) 3,4 — 1 x Dark Small Wool
2,3 — 1 x " " "

Repeat. (8 shots white per inch).



Coating No. 4

Weft: 2 Tones of Wool Boucle. A dark value and a medium light one. S/80

Color Suggestions: Chartreuse and Darkest Green

Fuchsia — Red or Navy Beige — Chocolate
Yellow — Black Dark Grey — Red

Treadle: 1,2 — 1 x (b) 2,4 — 1 x
2,3 — 1 x 1,3 — 1 x
(a) 3,4 — 1 x (c) Repeat (a)
4,1 — 1 x (d) 1,3 — 1 x
2,4 — 1 x

Repeat all from (a) (24 shots per inch).

THE DARK WARP BLEND

Warp: Random arrangement of the following:

- Bernat's "Fabri" in Navy Blue
- Royal Blue
- Dark Green
- Gendarme Blue
- Dark Peacock Blue
- Medium Dark Green (grayed)
- Midnight Blue

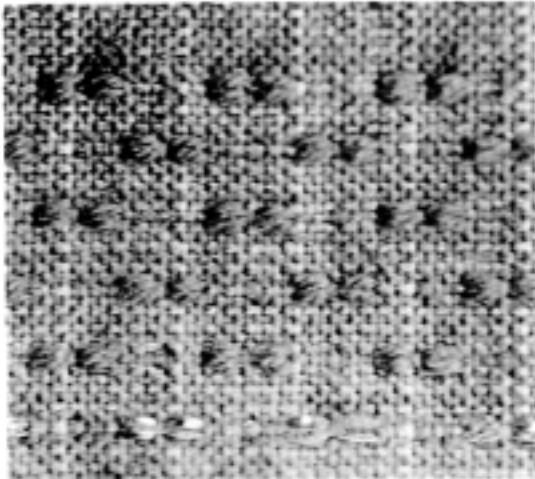
Place these in the same rotation across the warp.

NOTE: Other similar size wool yarns may be used as 2-24 or 2-28 or even 2-32s (30 per inch). Some worsted yarns are desirable among these for more non-muss quality in the fabric.

Sett: 24 ends per inch. Use 12 dent reed.

Threading:

		4 4 4 4
		3 3 3 3
3		2
2 2 2 2		
1 1 1 1		Repeat



Coating No. 5

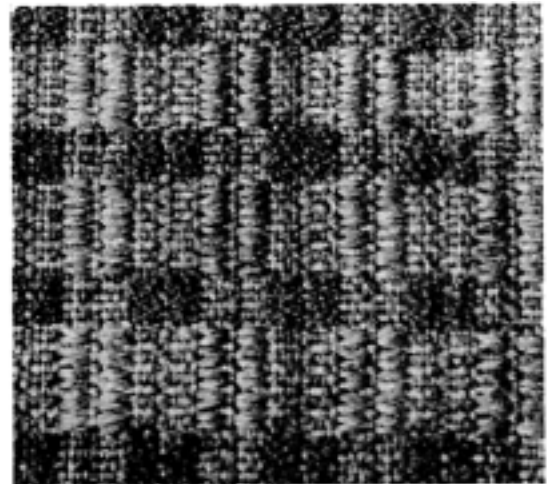
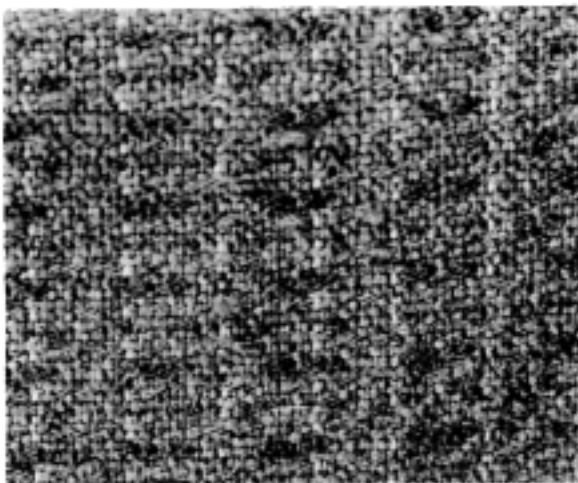
Weft: Royal Blue Fabri background (tabby).

Pattern Thread: Sock Wool S/80

- Treadle:** (a) Tabby 6 shots. Use 1,3 and 2,4 in royal blue.
 (b) 1,2 — 2 x Navy blue sock wool. Use royal blue tabby (2,4) between.
 (c) Tabby 6 shots.
 (d) 3,4 — 2 x Navy blue sock wool. Use royal blue tabby (1,3) between.

Repeat all from (a). (About 4 repeats per inch).

Colors: It will be noted that the background dominance can be changed to another color. Pick up the theme using darkest value of the color for the pattern shots.



Coating No. 6

- Treadle:** (a) 1,2 — 10 x Medium dark green "Fabri". Use single royal blue tabby shots between. Alternate 1,3 and 2,4 tabby.
 (b) 3,4 — 5 x Navy blue wool boucle. S/80. Use same kind of tabby as in (a).
 Repeat all from (a). (About 1 repeat per inch).

Coating No. 7

- Treadle:** (a) 1,2 — 1 x Navy blue wool boucle.
 (b) 2,4 — 1 x Medium Green.
 1,3 — 1 x " "
 (c) 3,4 — 1 x Royal blue wool boucle.
 Repeat (b).
 (d) 2,3 — 1 x Navy blue.
 Repeat (b).
 (e) 4,1 — 1 x Royal blue.
 Repeat (b).
 Repeat all from (a). (About 24 shots per inch).

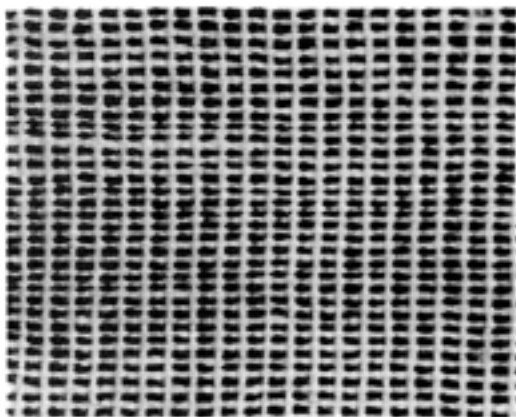
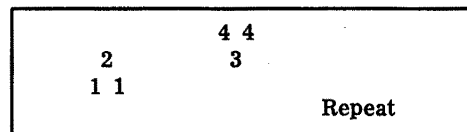
SUITING MATERIALS

The White Warp

Warp: 2-24 or 2-30 Off-White Wool. S/70,78, or similar.

Sett: 24 Ends per inch in a 12 dent reed.

Threading: For both the White Warp and Black Warp as shown.



Suiting No. 1

Weft: 2-24 or 2-32 Wool.

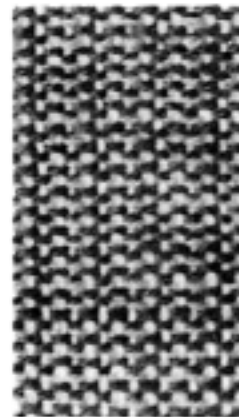
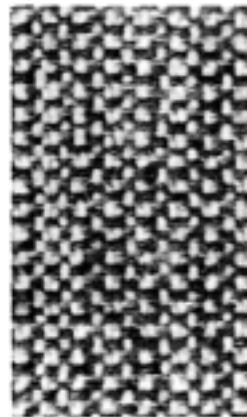
Colors: Navy, Black, Darkest Brown, Maroon.

Very fine Spun Silk in off-white or natural. Style #101 from S/61.

Double the weft threads on the bobbin of silk; but use a single thread on the shuttle of dark wool. Beat approximately 31 shots per inch.

Treadle: Tabby. Alternate the wool and silk.

Beat: Firmly throughout all the suitings.



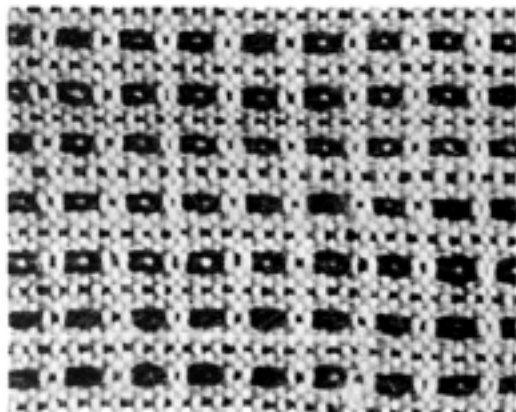
Suiting No. 2

A. Weft: "Tweed" S/25 Color #25.
Rayon-Wool Blend S/27 in purplish blue.

Treadle: 4,1 — 1 x Tweed.
(a) 2,3 — 1 x "
(b) 1,3 — 1 x Rayon Wool.
Repeat (a).
(d) 2,4 — 1 x Rayon Wool.
Repeat all. Total 30 shots per inch.

Other Color Suggestions:

B. Brown 2-18 Wool with Gray Tweed as the tabby shot or Red — Gray.

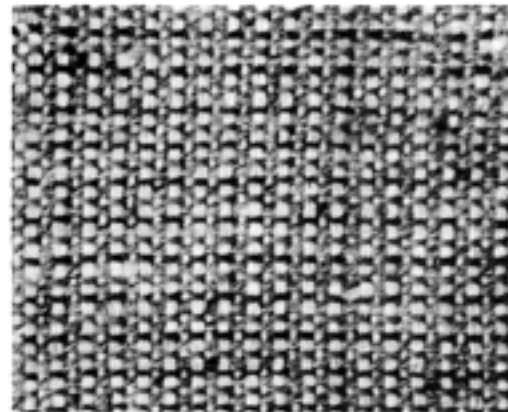


Suiting No. 3

Weft: Pearl Gray Tweed S/76,78 Harris Tweed is also good.
2-24 or 2-30 Wool

Colors: Red, Royal Blue, Purple.

Treadle: 3,4 — 1 x }
(a) 1,3 — 1 x } — Colored Wool.
3,4 — 1 x }
(b) 2,4 — 1 x — Colored Wool.
1,3 — 1 x — Gray Tweed.
(c) 2,4 — 1 x — Colored Wool.
1,3 — 1 x } — Gray Tweed.
2,4 — 1 x }
Repeat all. 35 shots per inch.



Suiting No. 4

Weft: Gray Tweed S/25 or 78.
Alternated with two other colors in 2-30 or 2-32 fine wool.

Color Suggestions: Royal Blue — Bright Red
Blue-Green — Purple
Gold — Henna
Rose — Plum

The Black Warp

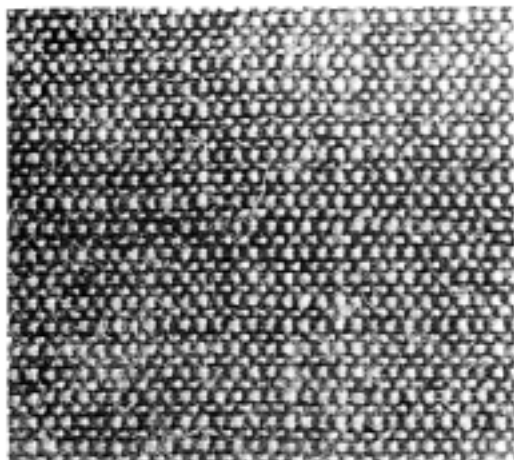
Never neglect the black warp that works such "magic" with colors.

Warp: 2-30 or 2-32 Black Wool.

"Weavecraft" S/78 or "Willamette" S/70.

Sett: 30 Ends per inch.

Threading: Same as for White Warp.

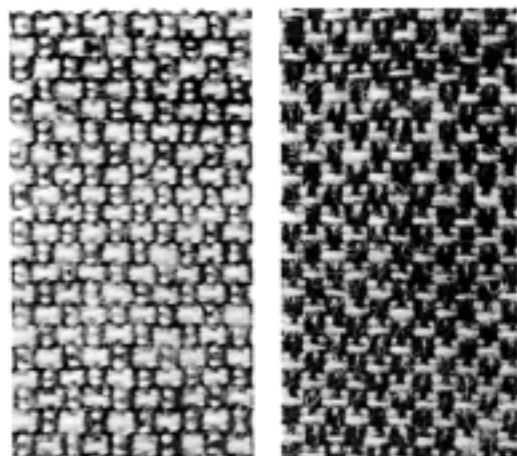


Suiting No. 5

Another detail given the simple tabby. A lovely piece.

Weft: Fine rayon or mohair wool of 2-32 size or Very fine Spun Silk, or any tiny yarn with sheen.

Colors: Gold, Rose, Royal Blue, Chartreuse, Plum, Henna, Yellow.



Suiting No. 7

A. Weft: Tweed S/25,78.

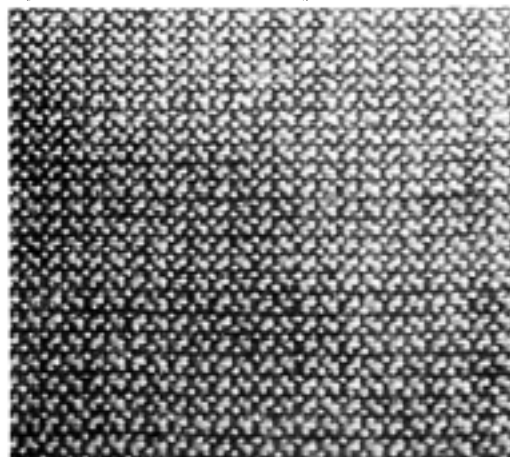
Colors: Gold, Gray, Red, Kelley, Blue, Rose.
Very fine wool in a darker tone of the same hue.

Treadle: 3,4 — 1 x Tweed.
2,4 — 1 x Wool.
1,3 — 1 x "
1,2 — 1 x Tweed.
1,3 — 1 x Wool.
2,4 — 1 x "

Repeat all. Total: 36 shots per inch.

B. 3,4 — 1 x Tweed.
2,4 — 1 x "
1,2 — 1 x "
1,3 — 1 x "

This makes good coating if the heavier tweed is used. 22 shots per inch.

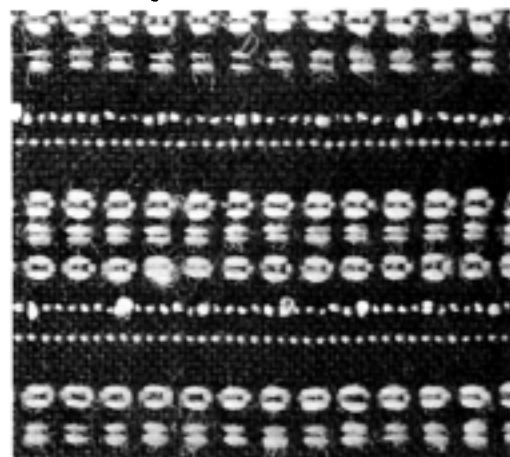


Suiting No. 6

Weft: Same kind as for No. 5. Single end.

Treadle: 2,4 — 1 x
2,3 — 1 x
1,3 — 1 x

Repeat.



Suiting No. 8

Weft: 2-18 White Wool or "Fabri" S/71.
Lightweight Tweed S/76.
Black Wool like warp.
White Rayon Boucle — S/27.

Treadle: Tabby 7 x — Black.

(a) 1,3 — 1 x Gray Tweed.
Tabby 3 x — Black.

(b) 1,3 — 1 x — Rayon Boucle.
Tabby 4 x — Black.

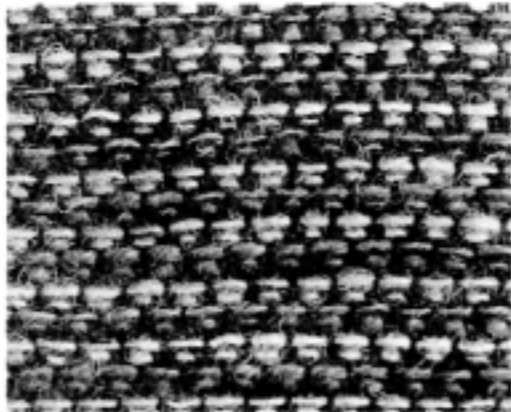
(c) 1,2 — 1 x White Wool.
2,4 — 1 x Gray Tweed.

1,2 — 1 x White.
Tabby 2 x — Black.

(d) 1,2 — 1 x Gray Tweed.
2,4 — 1 x Black.

1,2 — 1 x Gray.
Tabby 2 x

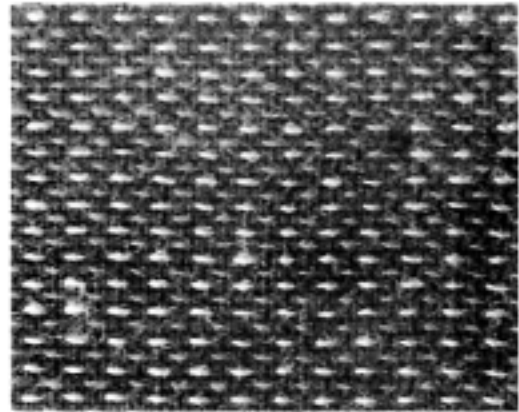
(e) Repeat (c).
Tabby 6 x. Repeat all. One repeat weaves about one inch.



Suiting No. 9

Weft: "Woodpecker" Color #151. Light Brown with Orange flecks. S/25.
 Pearl Gray Tweed (or Henna color).
 Black 2-32 Wool.

Treadle: 3,4,1 — 1 x Gray Tweed (Use 2 treadles together if necessary).
 2,4 — 1 x Black.
 3,4 — 1 x Gray Tweed.
 1,3 — 1 x Black.
 1,2,3 — 1 x Brown Tweed.
 1,3 — 1 x Black.
 1,2 — 1 x Brown Tweed.
 2,4 — 1 x Black.
 Repeat all. You'll love this suiting.



Suiting No. 10

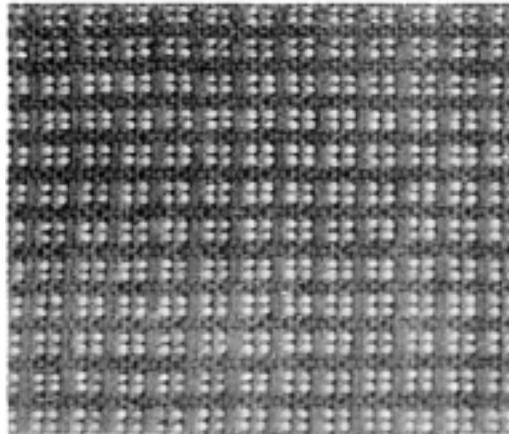
Weft: 2-32 Wool, or similar.
Colors: Henna, Gold Yellow and Black.

Treadle: (a) 1,2 — 1 x Gold.
 (b) 1,3 — 1 x Black.
 2,4 — 1 x "
 (c) 3,4 — 1 x Henna.
 (d) Repeat (b).
 Repeat all.

Suiting No. 11

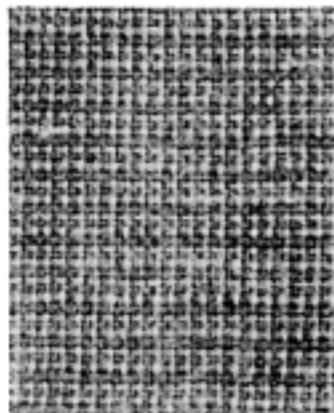
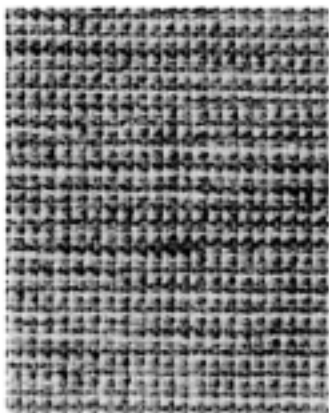
Weft: All 2-32 Fine Wool, or similar.
Colors: Black with Red, Blue, or desired color dominance.

Treadle: 2,3 — 1 x Red.
 1,3 — 1 x Black.
 2,3 — 1 x Red.
 Tabby 3 x — Black.
 Repeat.



The Two-Color Warp

The tabby weave is shown glorified by color. Note that A uses a twisted weft for a rich subtle effect. These two are for the "young in heart." This warp carries colors wonderfully.



Suiting No. 12

Warp: 2-32 Gendarme Blue alternated with Peacock or Aqua (or similar size).

Sett: 30 Ends per inch.

Threading: Twill.

A. **Weft:** Aqua and Dark Brown 2-32 wool wound on the same bobbin.

Treadle: Tabby.

B. **Weft:** "Tweed". Color # 25 S/25.
 2-32 Fine Wool in Color: Suggested are Red, Purple, Green, or Blue.

Treadle: Tabby 2 x with color.
 " 1 x with tweed.
 Repeat.