

SKIRTS

We are sure that our subscribers will take especial delight in making skirts by these lovely designs by Mrs. Martha Ebener of Portland, Oregon, one of the northwest's recognized weaver artists. Her subtle yet positive handling of color, texture, and resulting unity is at once apparent. The five types presented can be carried out in other colors and textures, yet retain the basic theme of the design.

No. 1 — "Textured Plaid"

Warp: Cotton Perle 5 and 10/3, alternated, S/7.

Weft: Cotton Boucle and 10/3, alternated, S/7 or S/15.

Sett: 36 inches wide in reed. Warp length: 3 $\frac{3}{4}$ yds. Wide Stripes—15 ends per inch (2" wide). Combination Stripes—21 ends per inch (1").

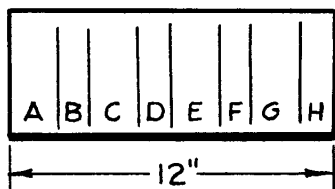
Pattern: Twill.

Materials Needed:

- | | |
|--|---|
| 2 Tubes each of Perle 5 in
No. 933 Delft Blue | 2 Tubes each of 10/3
No. K-62 Talisman |
| No. 1459 Canary | No. K-36 Turquoise |
| No. 459 Green | No. K-17 Ming Gold |
| No. 773 Pimento | No. K-95 Red |
- 675 yds. Natural Cotton Boucle, about 1500 yds. lb. size.
1 Tube Black 10/3.
50 yds. White Perle 3.
50 yds. White Perle 10

Warp Plan:

DIAGRAM OF WARP



Repeat A thru H three times to complete full warp width of 36 inches wide.

Color Arrangement:

(Read diagram from left to right)

- Stripe A — 8 ends of **Blue** No. 933 alternated with 7 ends K-36
- B — 5 ends black 10/3 1 end white Perle 10
8 ends gold K-17 1 end white Perle 3
6 ends green K-62
- C — 8 ends **Canary** No. 1459 with 7 ends K-17
- D — 1 end white Perle 10 8 ends green K-62
1 end white Perle 3 5 ends black 10/3
6 ends red K-95
- E — 8 ends Green No. 459 with K-62
- F — 5 ends black 1 end white Perle 10
8 ends red K-95 1 end white Perle 3
6 ends blue K-36
- G — 8 ends Red No. 773 with K-95
- H — 1 end white Perle 10 6 ends blue K-36
1 end white Perle 3 8 ends gold K-17

Weave: Tabby throughout. Alternate 10/3 colors with boucle in same order as warp arrangement. Each color area about 1-inch. At end of each color area weave 2 consecutive **color** shots. At end of next color area weave 3 consecutive **boucle** shots. Repeat throughout for a soft textural interplay.

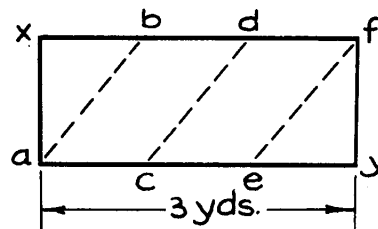
Beat: About 9-11 shots per inch. Do not overbeat or the material will be too stiff.



"Textured Plaid"

Cut Material:

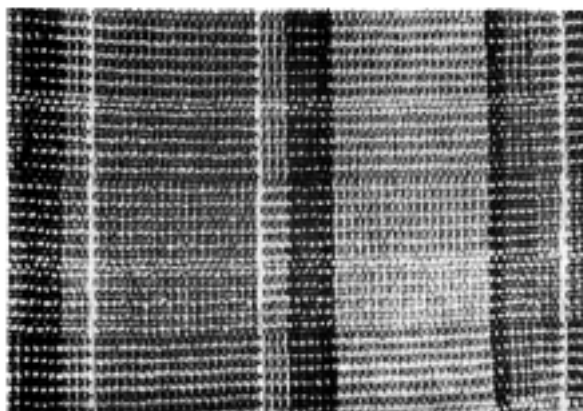
CUTTING DIAGRAM



Sew: Match and seam Sides B-D to C-E; X-B to A-C; E-Y to D-F.

Right sides touching. Belt is cut from corner pieces.

Note: Allow skirt to hang at least 2 weeks before hemming.



Detail of No. 1

No. 2 — "Stripe Tone"

Warp: Wool Nub like "Fleur De Lis" S/80, or S/8
"Cotton Knot"

Warp Colors:

Maroon
Gold
Green (Med.)
Blue (Med.)
Navy

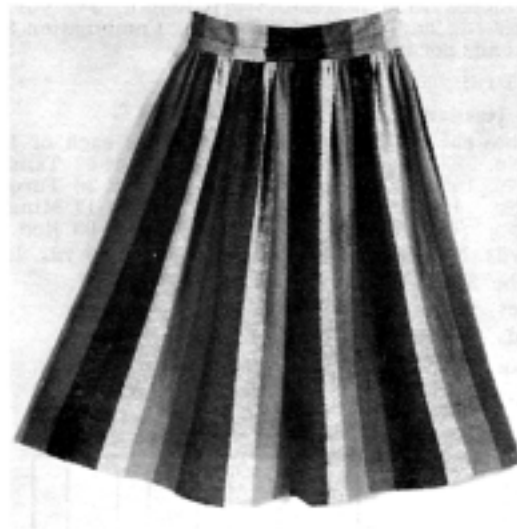
Use all "greyed" colors
if possible.

Warp 2 inches of each color. Repeat these 3½ times
across total warp width of 40 inches.

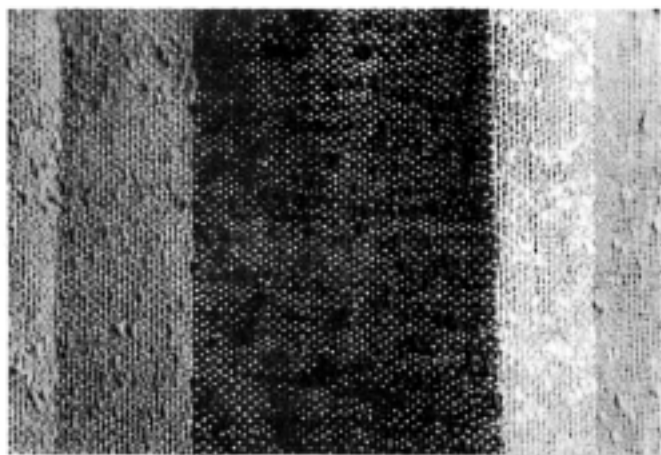
Weft: 30-2 or similar fine wool — S/70, 80
Aqua Color

Sett: 12 Ends per inch
15 Ends per inch

Pattern: Twill



"Stripe Tone"



Detail of No. 2

Warp: 2¾ yds. long

Weave: Tabby

Belt: Allow 9 inches for belt (2 widths 4½ inches wide).
Line and interline belt lightly. Make an invisible tuck
across belt to finish 3½" wide, tapering belt to 2½"
at closure.

See Basic Design No. 3 for inserting skirt zippers.

No. 3 — "Texture Blend"

TYPES OF YARN USED:

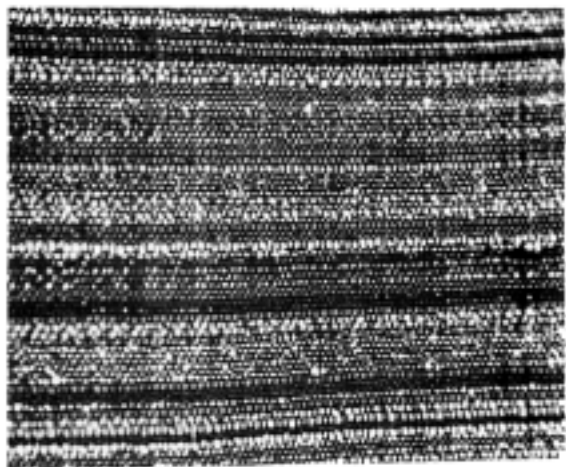
Weft: Waxy Silk
Rayon Flake
Rayon Boucle

Sources: Colors:

S/63 Brilliant Jades
S/8 Olive and Yellow Greens
S/8 Blue and Light Blue
Jade and Light Jade
Electric Blue and Dark Blue
Violet
Black
Slate Gray
Slate Blue
S/7 Black



"Texture Blend"



Detail of No. 3

Warp: Cotton Boucle. Type II — 3840 yd. lb.

Sett: 24 Ends per inch

Pattern for Sewing: Any gored skirt such as Simplicity No. 4083. See pattern for amount to warp.

Pattern: Twill.

Weave: Random arrangement of weft threads. Tabby weave.

Colors used singly, alternated.

Colors used in groups of two.

Colors used in groups of three.

Black is used in groups of 1, 2, 3, and 4.

Repeat identical combinations, but vary the placing of these. The repetition of like groups unifies the whole piece.

No. 4 — "Topaz Beauty"

The subtle beauty of the coloring and stripes in this lovely skirt cannot be conveyed by photograph, but the general proportions of area and the fabric detail reveal some of its lovely characteristics. The following are specifications for it.

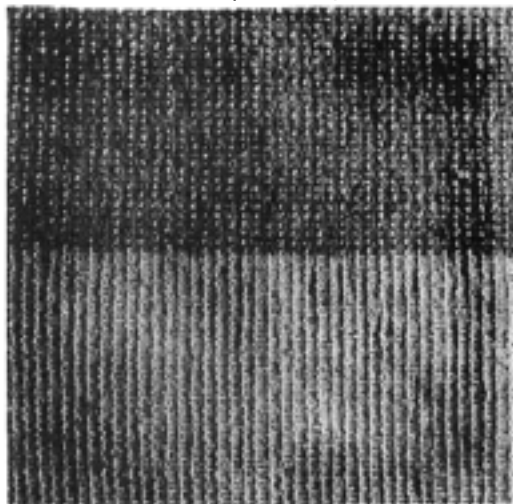
Warp: 3 ends—32-2 Wool or close size—8960 yd. lb.—S/78 or S/70. **Color:** Light Yellow.
1 end—Gold Wool Boucle—S/80. **Color:** Gold.

Sett: On a twill threading, the gold boucle is on harness No. 4. 30 ends per inch.

Weft: Types of yarn. Wool Boucle, Rayon Boucle, Metallic—Fortisan and the flat type.
Colors: All the colors are soft and "grayed" in tone.



"Topaz Beauty"



Detail of No. 4

Weave: Tabby throughout.

Color Arrangement: (From bottom of skirt to top.)

(a) 10 inches of 32-2 plain yellow alternated with gold boucle as in warp.

(b) Stripe Area:

2 sizes dark aqua nub alternated, about 35 shots.

5 shots chartreuse rayon boucle

2 shots blue metal

8 shots orange nub

3 shots fortisan gold

18 shots med. green nub wool

2 shots fuchsia fortisan metal

5 shots chartreuse rayon boucle

14 shots jade wool boucle alternated with chartreuse wool boucle

2 shots blue metallic

3 shots small red 2-32 wool alternated with 3 shots fuchsia nub wool. Repeat 7 x.

6 shots yellow wool alternated with 1 shot gold fortisan. Repeat 2 x.

6 shots dark aqua nub wool

3 shots chartreuse rayon boucle

17 shots medium green

10 shots gold nub wool alternated with chartreuse rayon boucle

10 shots aqua nub wool

2 shots fuchsia metal

3 shots chartreuse rayon boucle

3 shots fuchsia nub wool

4 shots gold wool boucle alternated with 3 shots gold fortisan

24 shots green wool boucle

(c) 7½ inches like (a)

(d) 6 inches like (a) for belt

Repeat (a), (b) and (c) for 2nd skirt length.

No. 5 — "Fiesta"

Warp: 32-2 "Weavercraft" S/78 8960 yd. cone or
30-2 "Clackamas" S/70 1050 yd. per 2 oz. tu.

Amount: Warp 3 yds. for 1st skirt, 2½ for each additional ones.

Sett: 27 Ends per inch, 37 inches wide in reed, if possible.

Suggestion: Use ½ inch of 10/2 cotton on edges to reduce draw-in and possible edge breakage.

Pattern:

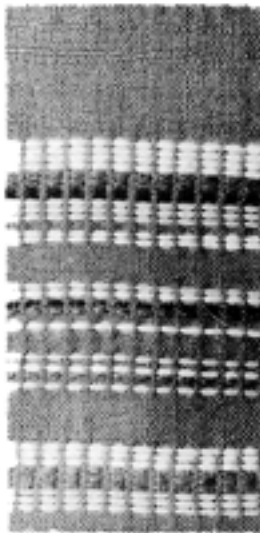
		4 4	
		3	
2 2			
1 1 1			Repeat

Pattern Thread: 3-Ply Sport Yarn S/80 or
Angora and Wool S/100

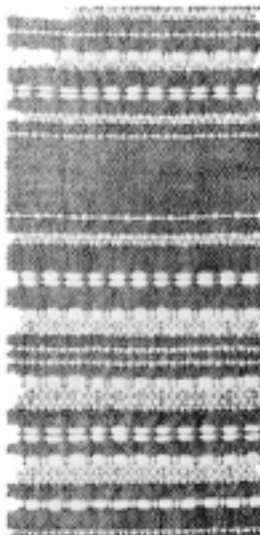
Weft Tabby: Same as warp.



"Fiesta"



Detail of No. 5



Alternative Border

Border Color Arrangement: (Reading from bottom to top of skirt)

- (a) 10 inches Tabby 1,3—1 x; 2,4—1 x.
(b) All trim color shots are 1,2—1 x; followed by 2,4-1,3 tabby, except where more are indicated.
- | | | |
|---------|-------------------------------|-------------------------------|
| Gold | Gold | Dk. Brown (on
Brown-black) |
| Gold | 3 Tabby | 3 T |
| 3 Tabby | Henna | Yellow |
| Henna | Henna | 5 T |
| 6 T | Lt. Brown (on
Brown-beige) | Gold |
| Gold | | Gold |
| Gold | | 31 Tabby |
- (c) White Henna
Yellow 3 T
3 T Lt. Brown
Gold Lt. Brown
Gold Dk. Brown
Gold 4 T
4 T White
Henna 3 T
Henna Yellow
- | | |
|--|--------|
| | Yellow |
| | 6 T |
| | Henna |
- (d) Gold Yellow
Henna 6 T
Brown Henna
3 T
- (e) Tabby to make 37" length. (Place double weft for marker threads.)
(f) Tabby 7 inches for belt.
(g) Repeat (a) through (e) for 2nd half of skirt.

ALTERNATIVE BORDER:

- (a) Tabby 10"
(b) Light Lines:
2,3—1 x
4,1—1 x
Grouped lines:
(a) 1,2—1 x Pattern Thread
2,4—1 x Tabby
1,3—1 x Tabby
1,2—1 x Pattern Thread
(b) 2,3—1 x Pattern Thread
4,1—1 x Pattern Thread
1,2,3—1 x Pattern Thread Doubled

Follow arrangement in photo. Suggest monochromatic color groups: i.e., pinks or plum; or stark white on dark backgrounds.