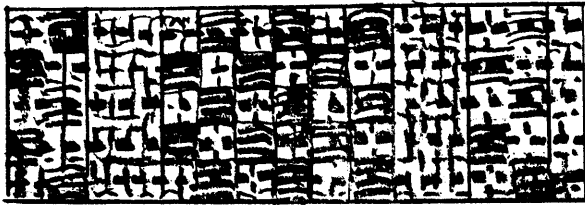


**SPECIAL LACE TH READING**

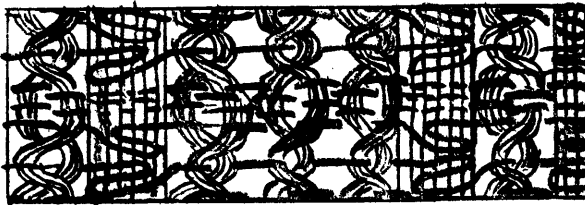
LACE SAMPLER ON A SPECIAL THREADING  
A National Conference Pattern



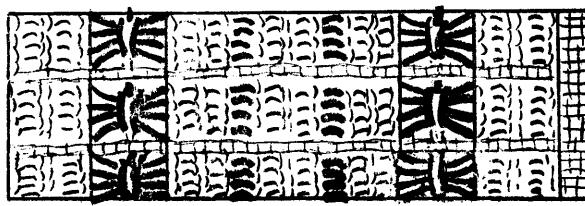
Border No. 7



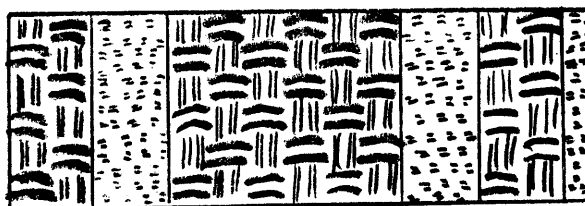
Border No. 6



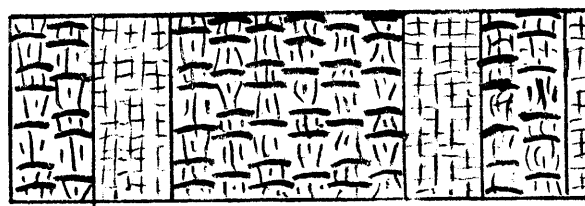
Border No. 5



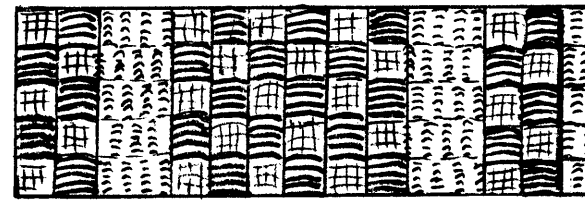
Border No. 4



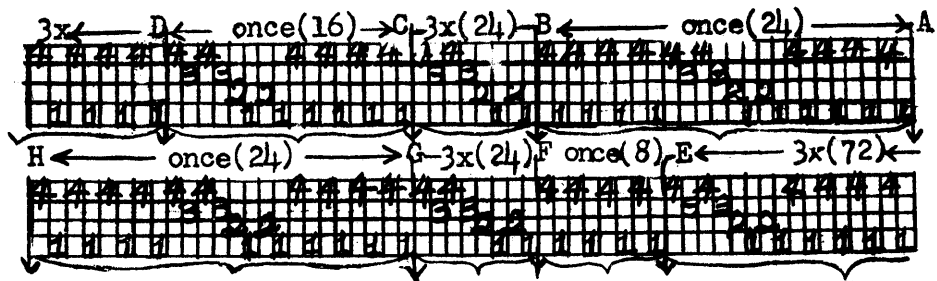
Border No. 3



Border No. 2



Border No. 1



THREADING DRAFT, A to H.

This lovely and very useful pattern was created by Mrs. Loraine Kessenich, and the many charming adaptations were woven by her into a lace sampler. It is an answer to the need for an openwork threading which will present various interesting textures.

The pattern itself is composed of sections of Plain Weave alternating with sections of M's and O's. The sections threaded on Harnesses 1,4,1,4 are the former; the sections threaded on Hs.1,2,1,2,3,4,3,4, are the latter. A great many texture changes result from different ways of treadling. Here are some of the possibilities:

A. Whenever Harnesses 1 or 4 are used alone, in alternation with each other, Plain Weave results in all those sections where the threading is on Hs.1 and 4; with an effective lacey texture similar to Bronson in the other portions.

B. Whenever Harnesses 1 and 2, or 3 and 4 are used together, the result is sections of M's and O's between sections of Plain Weave or Tabby.

C. The skips of 4 threads up and 4 threads down, which occur in the M's and O's sections may be utilized as a foundation for Leno Lace, as in Border 5. A finer Leno texture may be used by carrying one or two threads up and down.

D. Effects similar to Basket Weave, Danish Medallion, Dropdrall, Bronson, Monk's Cloth and even Overshot, are all possible, as shown by the borders illustrated with directions given below.

WARP AND THREADING PLANS FOR A TEXTURED SAMPLER

Warp: 16/4 Cotton or Perle 5  
Weft: Perle 3 or Perle 5 dbl.  
Threads per inch: 20  
Width in Sley, Appr. 10".  
Total No. of Thds.: 192

THREADING: A to B - - - 24  
B to C, 3 times(8) - - 24  
C to D, once, - - - 16  
D to E, 3 times(24) - - 72  
E to F, once, - - - 8  
F to G, 3 times, (8) - - 24  
G to H, once, - - - 24  
Total - - - 192

THREADING: Continued.  
Follow the draft above, starting at upper right and continuing toward left; starting again at right of second row, etc.

WEAVING:  
Border No. 1. OVERSHOT  
Tabby: Hs. 1-3; 2-4  
Pattern, Counterbalance:  
Hs. 1-2, 4x; Hs. 3-4, 4x  
Jack: Hs. 3-4, 4x; 1-2, 4x

LACE SAMPLER ON A SPECIAL THREADING- 2



Border No.14

Border No.2. BRONSON DEVELOPMENT.

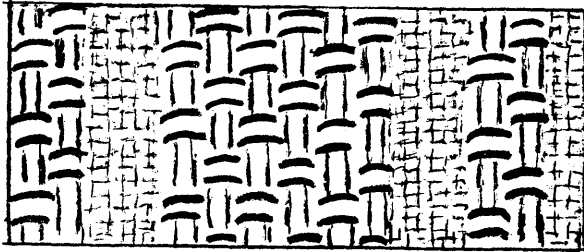
For Weft, use Perle 3, same color as warp, preferably white or ivory for most effective lace. Weave :

Counterbalanced Loom.

- a: Weave once each Hs.1; then H.4; then H.1.
- b: Hs.2&4; 1&3.
- c: H.4; H.1; H.4.
- d: Hs.1&3; then 2&4.

Jack Loom.

For Jack loom, take opposite harnesses from those designated for the counterbalanced type:  
 a: Hs.2,3,4; 1,2,3; 2,3,4.  
 b: Hs.1&3; 2&4. etc.

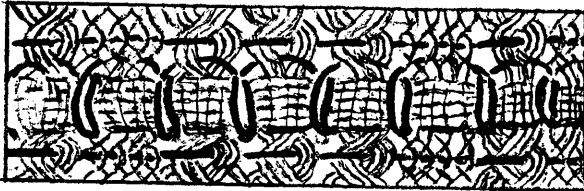


Border No.13

Border No.3. OVERSHOT and WARP FLOAT. Pattern Thd. Perle 3.

- a: Pat. Hs.1&2, (colored); Tab. 2&4; Pat.1&2; Tab.2&4.
- b: Pat. Hs.3&4 ( " ); Tab. 1&3; Pat.3&4; Tab.1&3.

(Note: For Jack Loom, take opposite harnesses).

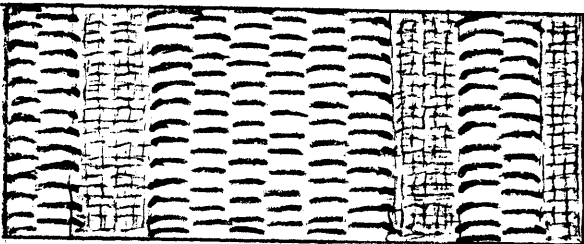


Border No.12

Border No.5 COMBINATION SPANISH LACE AND OVERSHOT

Use Perle 3 weft, one thread only. End with 2&4 Tabby on right side. Raise Hs.1&2. Do Spanish Lace on 1st 8 thds. (Sec. of 1,4, in Draft); then Leno, 4 over 4, (on next sec. of 12123434); Spanish on next 8 (Sec. of 1,4) then the Leno, 4 over 4, 3x, (on Sec. B to C) and so on all the way to left. (Spanish on all 1,4's; Leno on all other parts.)

Raise Hs.3&4. Tabby from left to right selvages. Now weave 4 more rows plain, Hs.1&2; 3&4; and after last 3&4 repeat first part of alternate Spanish and Leno.



Border No.11

Border No.4. BOW-KNOT OVER PATTERN FLOATS. For Pat. Thd. use heavy colored cotton, Perle 3 or equivalent.

- a: Pat. Hs.2&3; Tab. Hs.2&4; Pat. 2&3; Tab. 1&3. (For ease of workmanship, end Pat. Thd. on left.)
- b: Tab.2&4. Now from left do Danish Medallion Knot over center of each group of Overshot Floats.
- c: Weave 2 rows Tabby, after each row of Danish. (Repeat a,b,c as far as desired.)

Border No.6. COMBINATION BRONSON AND DROPDRALL. Use the same Pat. Weft as warp or heavier. One weft preferable.

- a: H.1; H.4; H.1; H.4; b: Hs.1&2&3; Hs.2-4; Hs.1&2&3.
- c: H.4; H.1; H.4; H.1. d: Hs.2&3&4; Hs.1&3; Hs.2&3&4.

Repeat all.

Border No.7. VARIATION OF DROPDRALL. Heavy Pattern Weft.

- a: Hs.1&2&3; Hs.2&4; Hs.1&2&3. b: Hs.2&3&4; 1&3; 2&3&4.

Repeat a,b.

Border No.8. PLAIN LENO LACE. Heavy Weft. Start on rt. side with Hs.1&2 for Shed. Weave Leno 1 over 1 on the Plain Weave parts (Hs.1,4,1,4) and 4 over 4 on the Pat. Weave parts, (Hs.1,2,1,2,3,4,3,4). Return on Hs.3&4.

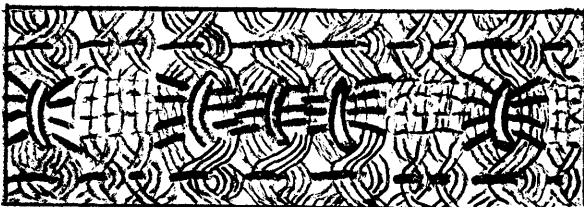
Repeat all.

Border No.9. BASKET WEAVE IN ALTERNATE COLORS Heavy wefts.

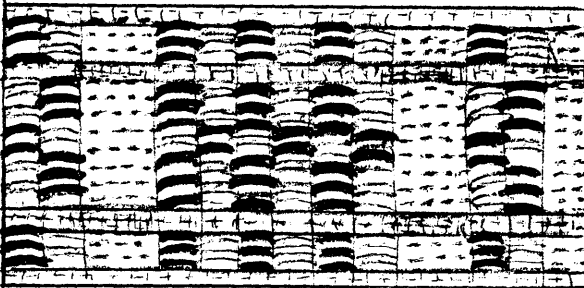
- a: Hs.1&2, Color A; 3&4, Color B; 1&2, A; 3&4, B; 1&2, A.
- b: Weave 4 rows Tabby, Hs. 1&3; and 2&4.
- c: Hs.3&4, Color A; 1&2, Color B; 3&4, A; 1&2, B; 3&4, A.
- d: Center: Hs.1&2, A; 3&4, B; 1&2, A. (Reverse: c, b and a).

Border No.10. LENO AND DANISH MEDALLION ON BASKET WEAVE.

- a: Heavy weft, one weft only. Start on right side with Shed Hs. 1&2. In all Plain Weave sections, (1,4) weave Leno with 2 twisted over 2; In all Pat. Sections (12123434) twist 4 over 4 and do Leno over these large groups. Return to right on Hs. 3&4.



Border No.10



Border No.9



Border No.8

**Border No. 10, Continued**

- b: Weave Hs. 1-2, 3-4, 1-2, 3-4, 1-2, 3-4, 1-2.
- c: Change to Hs. 3-4, and weave Danish Medallion, going toward the right in this case, over the center of each group of 4 over 4, leno twists, but not over the 2 and 2 sections, since there will be plain weave at these points. Follow with Section a again. (Repeat Sections a, b, and c of this border as desired).

**Border No. 11. PLAIN BASKET WEAVE. One weft only.**

For the single weft, use a color or white more than double the weight of the warp; or take two or three strands like warp and use as weft.

Treadle: Hs. 1-2; then 3-4. Repeat as desired. The effect is due to weight of yarn.

**Border No. 12. LENO AND DANISH on PLAIN WEAVE. One weft only, heavier than warp.**

- a: Start on right side with Hs. 1-2. Twist 1 over 1 warp in all Plain Weave sections, (threaded 1-4) and 4 over 4 in all pattern weave sections, (Hs. 1, 2, 1, 2, 3, 4, 3, 4) -- for Leno effect. Return to right on Hs. 3-4.
- b: Weave Plain Weave for three or five rows: Hs. 1-3; 2-4.
- c: Change to Hs. 3-4, going toward right, and weave Danish Medallion, going between the "4 over 4" sections, and the "1 over 1" sections. This is a natural division, easy to see. Repeat sections a, b, and c, or finish with section a.

**Border No. 13. MONK'S CLOTH VARIATION: Use heavy colored weft, or several strands together. In weaving this border at selvage, go around each outside thread when notation requires two successive rows. One may also use colors A and B, (or same succession with one color.)**

Weave: Hs. 1-3, once, (Color A); Hs. 3-4, once, (C. B, still heavier); Hs. 1-3, once (C. A) Hs. 2-4, once (C. A); Hs. 1-2, 2x (C. B); Hs. 2-4, once (C. A). Repeat all.

**Border No. 14. DANISH MEDALLION ON BASKET WEAVE. Use a heavy weft, several strands of a heavy colored thread such as 10-3 Cotton; or Perle 3, double; or 4-strand, single.**

- a: Make several rows of Tabby background, same color as warp, Hs. 1-3; 2-4. Change to a colored thread.
- b: With the heavy colored thread, alternate Hs. 1-2 and 3-4 for 6 successive rows.
- c: Tie down these pattern rows with Danish Medallion on last row of Hs. 3-4, taking the stitches at points between pattern floats and Plain Weave sections.

Many other variations are possible. Weave a sampler in the borders given above, then devise your own developments. Effects are made possible not only by variations in treadling, but by of texture and color in the weft as well. Tones of white make beautiful runners. Stunning effects are possible by using two colors of warp, or two weights, one for the Plain Weave sections, (Hs. 1, 4, 1, 4); the other for the Pattern Sections, - Hs. (1, 2, 1, 2, 3, 4, 3, 4)

**INFORMATION ON LACE WEAVES**

The following instruction leaflets are included in Folio on Lace Weaves- - - - \$1.25 Mexican Openwork; Leno Weave; Danish Medallion; Spanish Openwork; European Buratto, Designing on Leno Backgrounds; Borders in Lace; Mystery Lace; Texture Effects, Basic Form of Brooks Bouquet; Doupe Leno; 4-Harness Droppdral; Lace Finish; 2 Pages Lace Designs and Initials. All lace techniques are clearly explained with diagrams.

Separate Folio, Brooks Bouquet: A sampler of beautiful borders and effects, - - - - \$ .75 This folder gives specific methods for transferring designs into lace.

Published by Osma Gallinger Tod, 319 Mendosa Ave. Coral Gables, Fla

