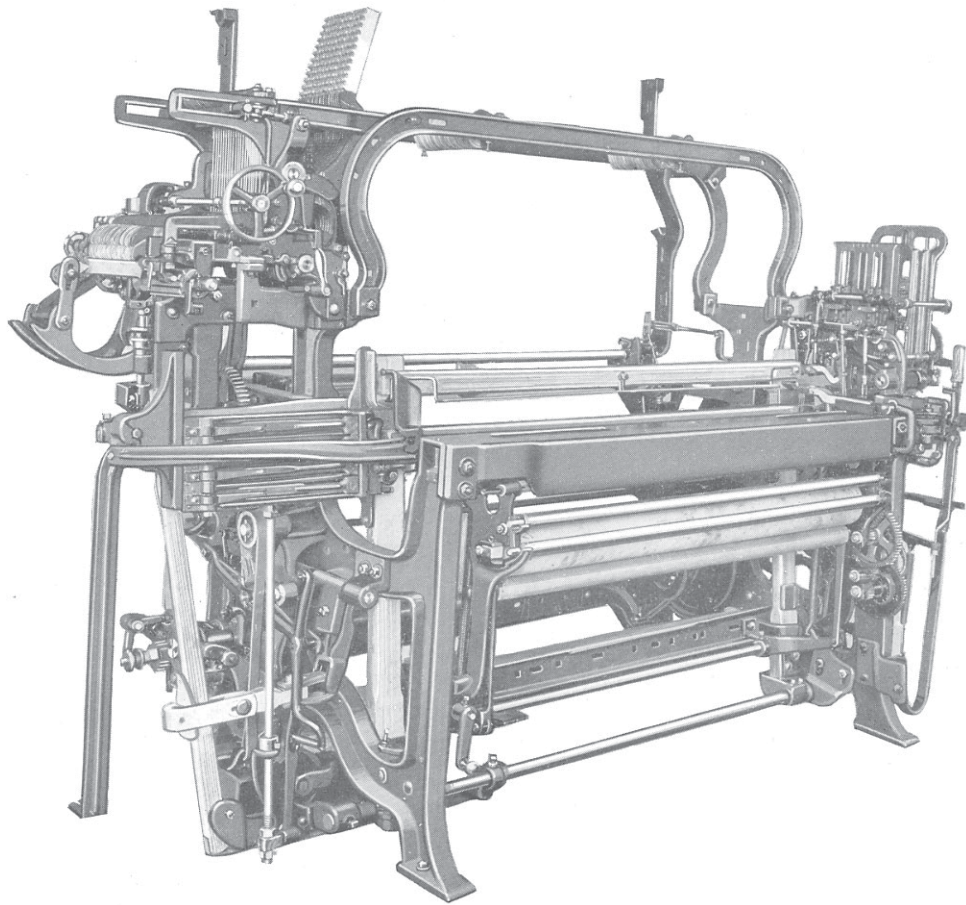


Automatic Dobby Dress Goods Loom



CROMPTON & KNOWLES LOOM WORKS

WORCESTER, MASS. U.S.A.

PROVIDENCE, R.I.

PHILADELPHIA, PA.

PATERSON, N. J.

S. B. ALEXANDER, CHARLOTTE, N.C.

Southern Manager

CROMPTON & KNOWLES AUTOMATIC 4 X 1 BOX DOBBY DRESS GOODS LOOM

The Crompton & Knowles Automatic Dobby Dress Goods Loom fulfills the present day requirement for an automatic loom in the dress goods field, particularly cotton fabrics.

This loom is usually built 4 x 1 box. With the accessory chain saving equipment, it is adapted to weave fabrics of considerable complexity and the automatic equipment assures economical production.

Dobbies are available with from 8 to 30 harness capacity. The loom may also be built 2 x 1 or 6 x 1 box automatic, or the same type of loom 2 x 2 or 4 x 4 box non-automatic. It is ordinarily built in widths $37\frac{1}{2}$ " to $58\frac{1}{2}$ " between swords.

GENERAL SPECIFICATIONS

Frame: Double arches and arch stands. Cast iron front and back girts. Breast beam plate at front of breast beam.

Harness Motion: $\frac{3}{8}$ " gauge double or single index single cylinder dobbie, with drop box cylinder combined. Slotted dobbie fingers. Pressed steel hook levers and drop forged hooks. Dobby driven by 2 x 1 gears from crank shaft. Two sets of sheaves in arch. Direct pull down springs under harnesses.

Box Motion: Geared type indicated from cylinder combined with dobbie. Multiplier to reduce chain.

Automatic Magazine: 4 cell stationary magazine for bobbin $7\frac{3}{8}$ " long and $1\frac{1}{8}$ " diameter. No. 4 double contact mechanical filling detector.

Drive: Individual motor drive. $\frac{1}{2}$ h. p. motor. Support to floor for motor stand. Motor gear on crank shaft. Driving gears 48 T. and 96 T. on crank and bottom shafts respectively. Cork friction plate. $1\frac{3}{8}$ " diameter crank shaft with 5" crank throw. $1\frac{11}{16}$ " diameter bottom shaft. Brake wheel on crank shaft. Side pull shipper handle.

Picking: Roll and cam type with picking shafts outside loomsides.

Lay: Wood lay beam with wood race plate and iron plate on under side, wood handrail, wood lay-swords. All wire type shuttle guard. Shuttle box $16'' \times 2\frac{1}{8}'' \times 1\frac{5}{8}''$ to take shuttle $15\frac{1}{8}'' \times 1\frac{3}{4}'' \times 1\frac{3}{8}'' \times 1\frac{1}{4}''$ for $7\frac{3}{8}''$ bobbin. Long straight binder and Victor check on plain end.

Protection: At center of Lay.

Stop Motion: Filling Stop Motion. At side operated by cam on bottom shaft.

Warp Stop Motion. Crompton & Knowles Regan Type Mechanical Warp Stop Motion.

Let Off: Friction type arranged for single beam. Beam $4\frac{1}{2}''$ less between heads than distance between swords. 5" diameter barrel and 16" diameter heads. Vibrating whip roll.

Take Up: Positive ratchet type with rising cloth roll. Cloth roll covered with perforated tin. Pressure roll over cloth roll. Treadle lever to lower roll of cloth. Take-up gears with cut teeth.

CHANGES

Let Off: 18" or 20" diameter beam heads.
Stands for two or three upper beams.
Durkin thick and thin place preventer.

Take-Up: Iron roll by friction against cloth roll.

Box Motion: Star wheel type 6 x 1 and 4 x 4.

Boxes: Automatic 2 x 1, 4 x 1, 6 x 1.
Non-automatic 2 x 2, 4 x 4, 2 x 1, 4 x 1,
6 x 1.

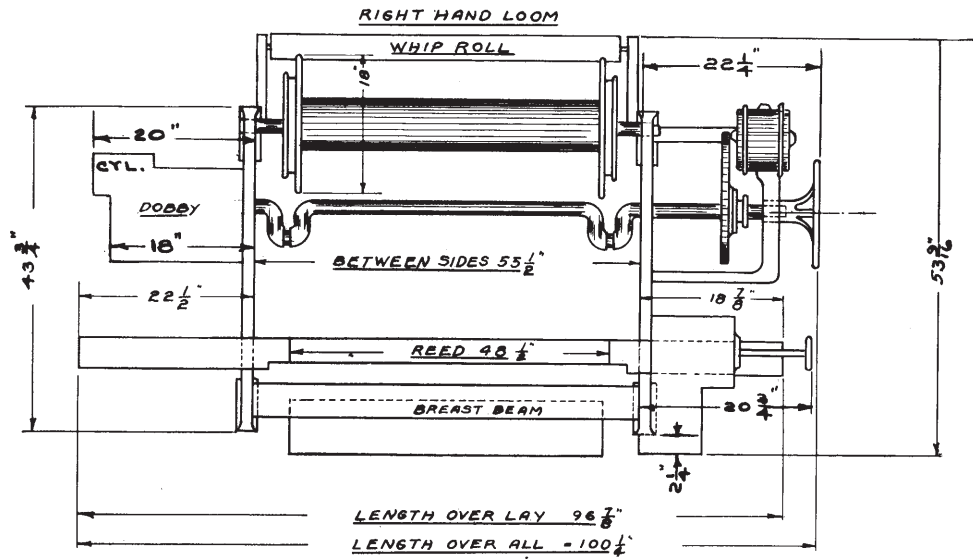
Shuttle Box: Non-automatic $16'' \times 1\frac{7}{8}'' \times 1\frac{5}{8}''$
for shuttle $15'' \times 1\frac{5}{8}'' \times 1\frac{3}{8}''$.

Shuttle: Automatic $15\frac{3}{4}'' \times 1\frac{7}{8}'' \times 1\frac{3}{8}'' \times 1\frac{5}{16}''$
for bobbin 8" long and $1\frac{1}{8}''$ diameter.

Magazine: For bobbin 8" long and $1\frac{1}{8}''$ diameter.

Drive: 14" face friction pulley for belt drive.
Cork inserts for face friction only.

Harness Motion: Two-weave motion. Double cylinder dobbie, multipliers, Leno motion, jacquards, spring jacks.



FLOOR PLAN OF LOOM 48 1/2" BETWEEN SWORDS

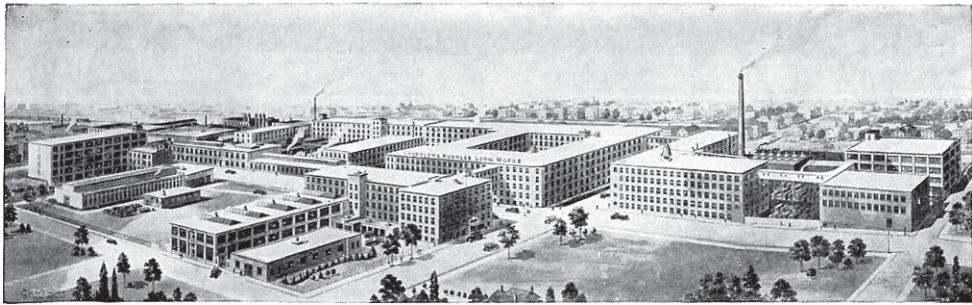
Speed: About 150 picks per minute.

The following list covers some of the types of looms and accessory machinery built by Crompton & Knowles Loom Works.

GENERAL			DUCK		
Asbestos	Fly Net	Plush	Flat Duck	Medium Duck	Special Extra
Brocatelle	Hammock	Press Cloth	Light Duck	Heavy Duck	Heavy Duck
Burlap	Heavy Belting	Shawl, Fancy	Intermediate Duck	Extra Heavy Duck	
Cane	Lappet	Sisal Bag			
Curtain	Linen	Upholstery			
Double Shuttle	Linen Crash	Velvet			
Plush	Mohair	Window Shade			
Drapery					
WOOLEN AND WORSTED			CARPET AND RUG		
	Gem Dress Goods	Jacketing	Axminster	Fibre Art Square	Paper Carpet
Cassimere	Gem Worsted	Satinet	Brussels	Fibre Carpet	Tapestry
Clay Twill	Heavy Worsted	Woolen Blanket	Chenille	Grass Twine	Wet
Dress Goods	Intermediate Worsted		Cocoa Matting	Matting	Wilton
Felt					
Flannel					
COTTON			SILK		
	Crochet Quilt	Lining	Broad Silk	Jacquard Silk	Veiling
Bag	Damask	Marseilles Quilt			
Cord Fabric	Denim	Mosquito Netting			
Corduroy	Gingham	Sheeting			
Cotton Blanket	Handkerchief	Terry Towel			
Cotton, Plain	Huck Towel	Tire Fabric			
Cotton Plush	Jean				
Coutil					
			NARROW FABRIC		
			Bandage	Elastic Webbing	Ribbon
			Belting	Non-elastic Webbing	Tape
			Brake Lining		Wicking
			MISCELLANEOUS		
			Bobbin Strippers	Narrow Fabric	Narrow Fabric
			Cop Winders	Warpers	Quillers
			Dobbies	Mechanical Warp	Printing Drums
			Jacquards	Stop Motion	Setting Frames



PROVIDENCE, R.I.



CROMPTON & KNOWLES LOOM WORKS
WORCESTER, MASSACHUSETTS, U.S.A.

A LOOM FOR EVERY KNOWN WOVEN FABRIC