

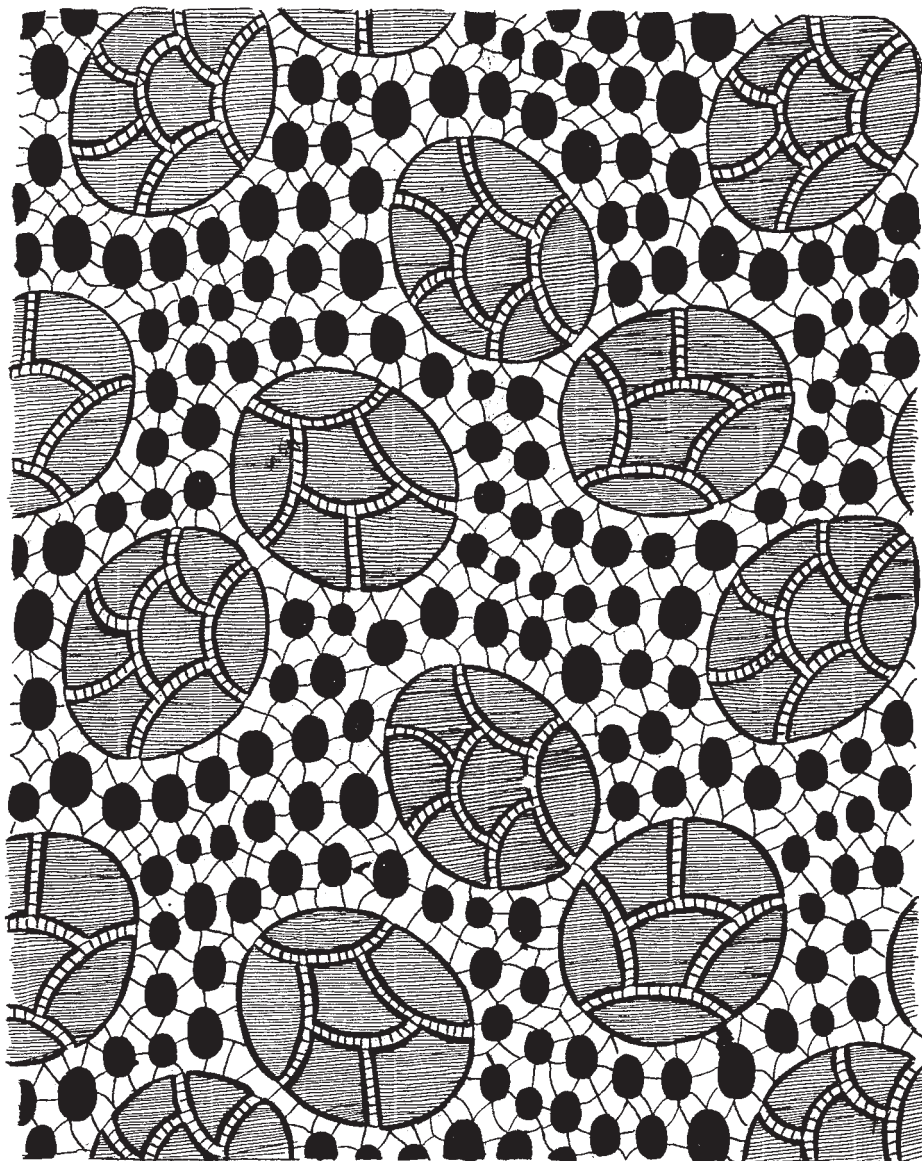
April 1, 1930.

B. A. BALL

Des. 80,825

LACE

Filed Jan. 22, 1930



Ben A. Ball INVENTOR

BY *Munroe*

ATTORNEY

Patented Apr. 1, 1930

Des. 80,825

UNITED STATES PATENT OFFICE

BEN A. BALL, OF PAWTUCKET, RHODE ISLAND, ASSIGNOR TO AMERICAN TEXTILE COMPANY, INC., OF PAWTUCKET, RHODE ISLAND, A CORPORATION OF RHODE ISLAND

DESIGN FOR LACE

Application filed January 22, 1930. Serial No. 34,238. Term of patent 7 years.

To all whom it may concern:

Be it known that I, BEN A. BALL, a citizen of the United States, and a resident of Pawtucket, in the county of Providence and State of Rhode Island, have invented the new, original, and ornamental Design for Lace, of which the following is a specification.

Reference is had to the accompanying drawing, in which—

The figure is an elevation of lace, showing my new design.

I claim:—

The ornamental design for lace, substantially as shown.

BEN A. BALL.