

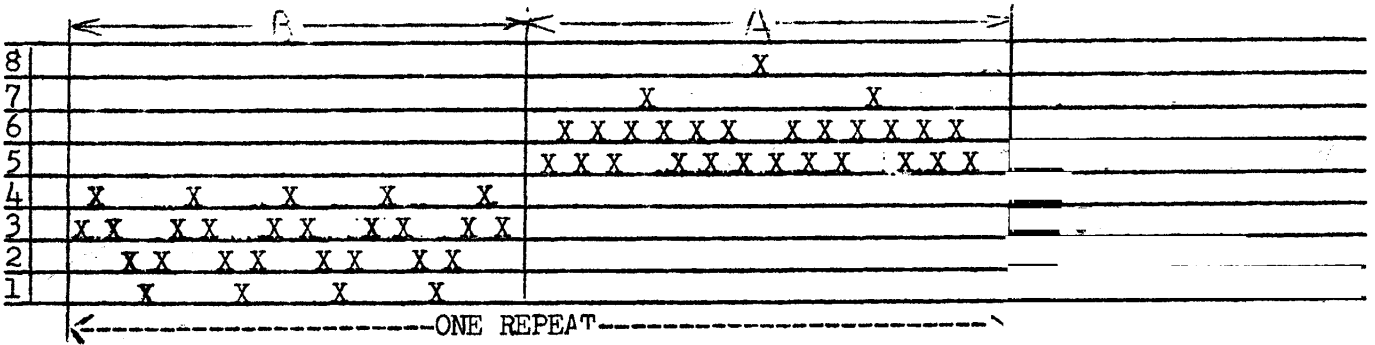
DRAFTS AND DESIGNS
A Guide for Weaves of 5 to 12 Harnesses

VOLUME 1, Number 1, September 1958

WEAVE: Four Block, Texture & Lace

DRAFT: From KOTIEN JA KOULUJEN KANGA-
SPUIHIN by Pyysalo & Merisalo

THREADING DRAFT:



TIE-UP DRAFT

| | | | | | | |
|---|---|---|---|---|---|---|
| 8 | X | | X | | X | |
| 7 | | X | | X | X | X |
| 6 | X | | X | | | |
| 5 | | X | | X | | X |
| 4 | | X | | | X | |
| 3 | X | | X | | | X |
| 2 | X | X | | X | X | |
| 1 | | | X | X | | X |
| | 1 | 2 | 3 | 4 | 5 | 6 |

Sample on next page.

WARP: Natural Silver Grey, Linen,
size 50/4, 3750 yards per lb.,
1/2 lb. spools, \$4.50 per lb.

WEFT: 2 different threads.
A. 9/3 rug linen, 850 yards
per lb. 1/2 lb. spools
\$2.40 a lb.
B. 40/2 bleached linen,
6,000 yds per lb. \$6.50
per lb.

TREADING:

2, 40/2 blea.
1, 9/3 rug linen
2, 40/2 blea.
3, 40/2 blea.
4, 9/3 rug linen
3, 40/2 blea.
2, 40/2 blea.
1, 9/3 rug linen
2, 40/2 blea.
3, 40/2 blea.
4, 9/3 rug linen
3, 40/2 blea.
2, 40/2 blea.
1, 9/3 rug linen

2, 40/2 blea.
3, 40/2 blea.
4, 9/3 rug linen
3, 40/2 blea.
2, 40/2 blea.
1, 9/3 rug linen
2, 40/2 blea,
3, 40/2 blea.
5, 9/3 rug linen
6, 40/2 blea.
5, 9/3 rug linen
3, 40/2 blea.
5, 9/3 rug linen
6, 40/2 blea.
5, 9/3 rug linen

5, 9/3 rug linen
3, 40/2 blea.
5, 9/3 rug linen
6, 40/2 blea.
5, 9/3 rug linen
3, 40/2 blea.
5, 9/3 rug linen
6, 40/2 blea.
5, 9/3 rug linen
3, 40/2 blea.
5, 9/3 rug linen
6, 40/2 blea.
5, 9/3 rug linen
3, 40/2 blea.
(repeat over & over)



DRAFTS AND DESIGNS

Published monthly—(except July and August)
by Robin & Russ Handweavers, 632 Santa
Barbara St., Santa Barbara, Calif.

SUBSCRIPTION: \$4.00 per year.

Back Issues or Single Copies 50¢ each.

VOLUME 1, Number 1. September 1958.

COMMENTS:

Be sure if you start threading with the A block, to end on the other side of the loom with the A block. The first acquaintance with this draft was when Mrs. Doris Shattuck and your editor chose it as a project and wove it at the Banff School of Fine Arts under the direction of Mrs. Henderson and Mrs. Sandin in 1956. This project was easy to weave, and the main problem is that of a good edge with your two extreme contrasting weights in weft thread. You can use this set-up and use only one size weft thread, but I feel that it is more distinctive and that two of the blocks show much more when you do use the contrasting threads.

USES OF THIS FABRIC

This weave would make very unusual tablecloths, and particularly for outdoor or patio settings. It would make striking draperies, perhaps in other textures and kinds of thread, using colors and naturals. It will make unusual mats, etc.

This fabric was woven on a Macomber, Ad-A-Harness Loom.

A tight beat is one thing that we would suggest also, if you use the linen. We used a double beat and thought that this was the most satisfactory. It will depend upon the weaver as to the exact treadling, as if your beat is looser than ours, it will not take as many beats to square your block. Of if you beat tighter than this, it will thus need more picks per inch, and thus your treadling will have to be revised to accommodate the treadling accordingly. You would have to add perhaps a 2,1,2,3,4,3 in the first block and a 3,5,6,5 in the 2nd block.

Russell E Groff, Editor

DRAFTS AND DESIGNS

A guide for 5 to 12
harness weaves

DIAMONDS AND CIRCLES

An all silk fabric that can be used for dress materials, sport shirts, and possibly for table-cloths, etc.

THREADING DRAFT

| | | | | | | | | | | | |
|----|---|---|---|---|---|---|---|---|---|---|---|
| 12 | X | | | | | X | | | | | |
| 11 | | X | | | | | X | | | | |
| 10 | | | X | | | | | X | | | |
| 9 | | | | X | | | | | X | | |
| 8 | | | | | X | | | | | X | |
| 7 | | | | | | X | | | | | X |
| 6 | | | | | | | X | | | | |
| 5 | | | | | | | | X | | | |
| 4 | | | | | | | | | X | | |
| 3 | | | | | | | | | | X | |
| 2 | | | | | | | | | | | X |
| 1 | | | | | | | | | | | |

WARP USED

The warp used was a 12/3 spun silk, which has about 9600 yards per lb., and comes on 1/2 lb. spools and is priced at \$8.00 per lb.

WEFT USED

The weft used was exactly the same as the warp thread.

REED USED:

An 18 dent reed was used, and it was double sleyed, 2 ends per dent, or a total of 36 threads per inch.

TIE-UP DRAFT

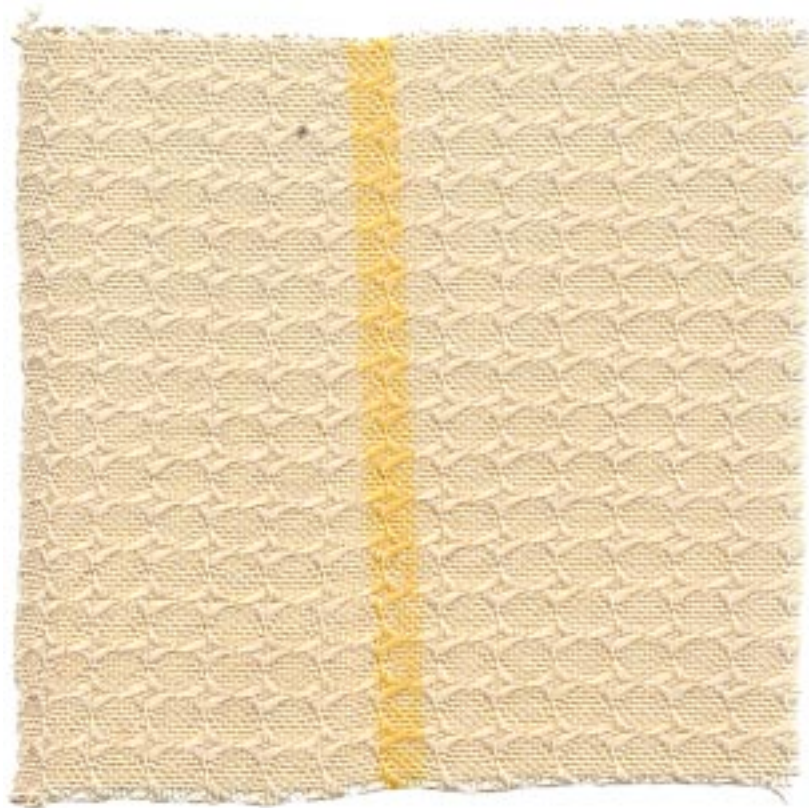
| | | | | | | | | | | | | |
|----|---|---|---|---|---|---|---|---|---|---|---|---|
| 12 | X | | | | | | X | X | X | X | X | X |
| 11 | | | | | | X | | X | X | X | X | X |
| 10 | | | | | X | | X | | X | X | X | X |
| 9 | | | | X | | X | | X | | X | X | X |
| 8 | | | X | | X | | X | | X | | X | X |
| 7 | | X | | X | | X | | X | | X | | X |
| 6 | X | | X | | X | | X | | X | | X | |
| 5 | X | X | | X | | X | | X | | X | | |
| 4 | X | X | X | | X | | X | | X | | | |
| 3 | X | X | X | X | | X | | X | | | | |
| 2 | X | X | X | X | X | | X | | | | | |
| 1 | | X | X | X | X | X | | | | | | X |

1 2 3 4 5 6 7 8 9 10 11 12

TREADLING

The treadling is a straight twill treadling progression from treadle number 1 to treadle number 12, repeated over and over.

Sample on next page.



DRAFTS AND DESIGNS

Published monthly (except July and August) by Robin & Russ Handweavers
632 Santa Barbara Street, Santa
Barbara, California.

SUBSCRIPTION: \$4.00 per year
Back issues or Single Copies 50¢ each
VOLUME 1, Number 2, October 1958

MORE ABOUT THE FABRIC:

The warp in our sample is sett at 36 threads per inch. However, I felt that it would have been better if I had sett it at 40 per inch, that is: 4 per dent in a 10 dent reed.

I suggest this because it will make your fabric firmer. The spun silk has a very tight twist, and thus has a slight tendency to slip. So, if you set the warp closer, you make the pattern slightly smaller, firmer, and you help eliminate this tendency of the very smooth spun silk to slip.

We wove about 16 yards of this material, and had a most beautiful dress made out of some of the all white, same as our sample. It looked stunning on the woman that we made it for. We also wove some of this with a 20/2 unmercerized cotton, and we liked this combination particularly well. There was much less tendency for possible catching and slipping of the 12/3 warp silk in the finished fabric. The roughness of the 20/2 was just enough to make the fabric firmer. Then, we wove still another piece with a 24/3 natural unmercerized Egyptian Cotton, and this was one of the nicest of all pieces. We used an orange or rust orange spun silk in another and it too was very striking.

Besides making a dress of this, we had 2 sport shirts made, one of the silk and cotton combination, and the other of the all silk, with the 8 ply

beige spun silk as the woof. They are very nice to wear if I do say so myself.

The dress maker stated that the fabric was easy to handle, but from seeing my shirts and wearing them, I would suggest either binding the seams, or stitching them, and thus there would be no unravelling of this silk.

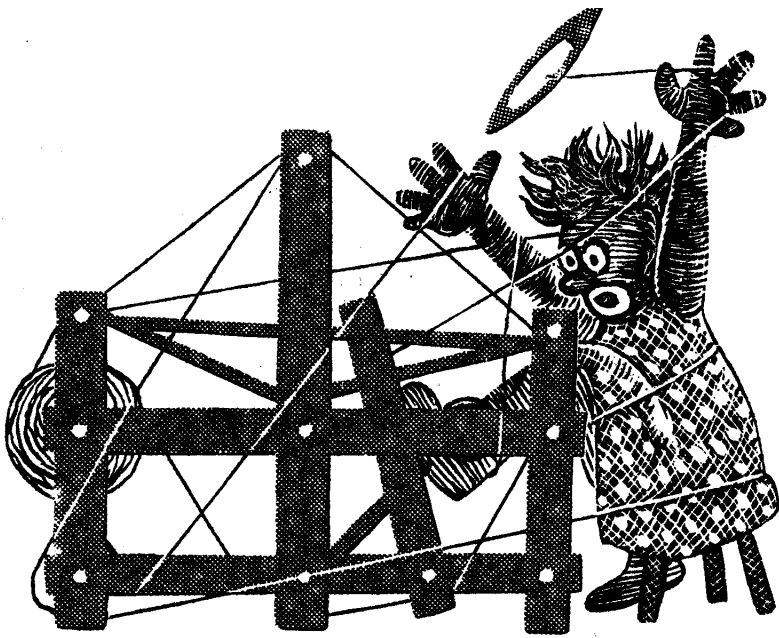
This fabric was woven on a 12 harness, 40" width, Macomber loom.

The idea for this fabric came from the Italian Folio, "2500 ARMATURE-INTRECCIO." It is actually a folio giving 2,500 tie-ups for twill threadings for the weaving of linen, cotton, rayon and silk. The tie-ups are all for looms with 8 to 24 harnesses. The price of this is \$4.50 if anyone is interested.

We have had several persons suggest that this would make a beautiful table cloth, and we feel that this would be another good use of such a fabric. However, there is a tendency for the silk to shrink, so the washing must be handled with care. We would definitely suggest washing thoroughly before making up into any shirts or dresses to eliminate as much as possible the shrinking. It does iron beautifully, and we used a steam iron to press it after washing.

The silks used in this sample are available from Robin & Russ Handweavers.

Russell E. Groff, Editor



DRAFTS AND DESIGNS

A guide for 5 to 12

harness weaves

LINEN SQUARES

An all linen fabric, with a pattern that could be used for many other fabrics other than linen.

THREADING DRAFT

| | | | | | | | | |
|---|---|---|---|---|---|---|---|---|
| 8 | | X | | X | | | | X |
| 7 | X | | X | X | | X | X | |
| 6 | X | X | | X | X | | X | |
| 5 | X | | X | | X | | | X |
| 4 | | | | X | | X | X | X |
| 3 | | | | X | X | X | X | X |
| 2 | | | | X | X | X | X | X |
| 1 | | | | X | | X | | X |

WARP USED

The warp used in this fabric was a 40/3 bleached linen. It has 4,000 yards per pound, on 1/2 lb. spools, and the price is \$6.50 per lb. for the natural or \$7.00 per lb. for the bleached white. The natural should be just as satisfactory as the bleached white.

WEFT USED:

The weft thread was a 40/2 linen, and we used 2 colors, a chocolate for several yards and then a darker brown for several yards. It is \$7.20 per lb., and is available on 4 oz. spools.

TIE-UP DRAFT

| | | | | | | | | | |
|---|---|---|---|---|---|---|---|---|---|
| 8 | X | | | | X | X | X | | |
| 7 | | X | | | X | X | | X | |
| 6 | | | X | | X | | X | X | |
| 5 | | | | X | | X | X | X | |
| 4 | X | X | X | | X | | | | |
| 3 | X | X | | X | | X | | | |
| 2 | X | | X | X | | | | X | |
| 1 | | X | X | X | | | | | X |

1 2 3 4 5 6 7 8

TREADLING

The treadling for this fabric is a single shuttle treadling, and I'm going to give the sequence of the treadles used, giving the treadle number and then a comma, and the next treadle number, and then a comma, etc.

8,7,6,5,4,3,2,1,2,3,4,3,2,1,2,3,4,3,2,
1,2,3,4,5,6,7,8,7,6,5,6,7,8,7,6,5,6,7.
REPEAT OVER AND OVER.



DRAFTS AND DESIGNS

Published monthly (except July and August) by Robin & Russ Handweavers, 632 Santa Barbara Street, Santa Barbara, Calif.

SUBSCRIPTION: \$4.00 per year and back issues or single copies are 50¢ each.
VOLUME 1, Number 3, November 1958

MORE ABOUT THE FABRIC:

The warp in our sample is set at 30 threads per inch, 2 ends per dent in a 15 dent reed.

We did beat the weft thread in firmly or quite tightly. It helped make the squares more definite. While I'm mentioning this, I should mention that we did use 2 colors in the weft, a chocolate brown for about 3 to 4 yards, and then a darker brown for the last 4 yards. We felt that the darker brown made the pattern stand out more clearly, but as for choice of color, I'll leave that up to you, as I liked the chocolate just as well as the dark brown.

We wove about 10 yards of this fabric in all, and would like to suggest that it would make nice tablecloths, and the pattern could be effectively used in place-mats, and in draperies. We also feel, that if you used a finer thread and set it closer, that it would make a good dress fabric. I felt too, that this pattern could be done in a wool, and make effective coating or suit material.

I don't know how many of you are familiar with the 2 books by Edward F. Worst, but I'm going to recommend them both here. This pattern was from the Worst Book, HOW TO WEAVE LINENS which is priced at \$5.50. It has well over 1/2 of its patterns in 5, 6, and 8 harness patterns. Then, too, the other book by Worst, FOOT POWER LOOM WEAVING, has many, many multiple harness patterns in it. It is \$7.50 each, and has been reprinted not too long ago. I think that these are two of the most neglected books in weaving today, because of the many new books that have come out, and particularly those with color plates.

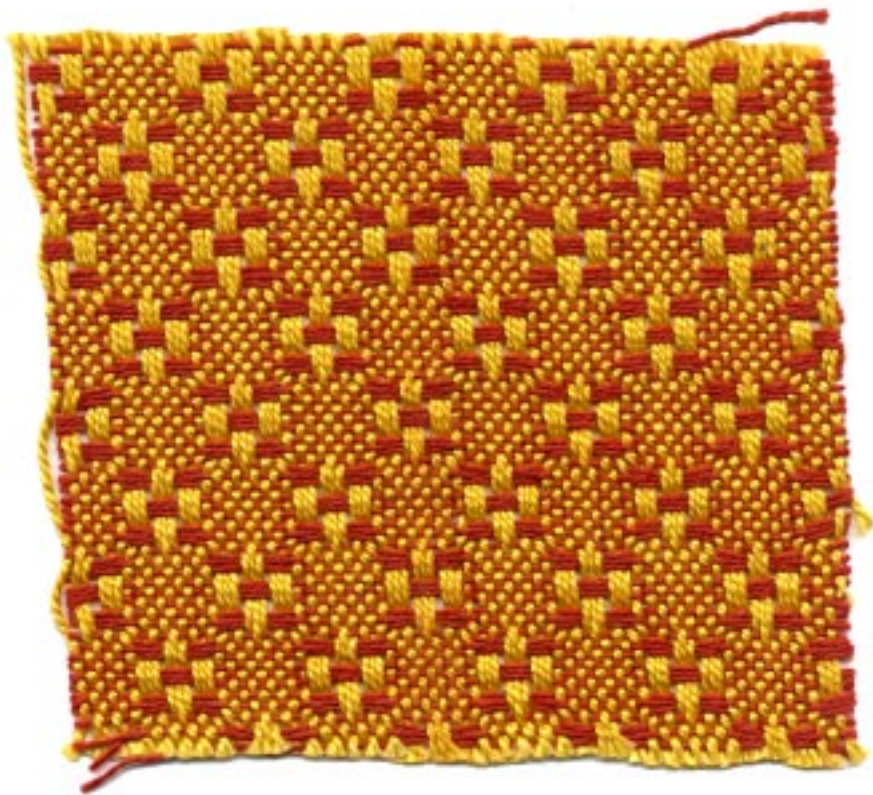
I might just mention further that this pattern is from the Worst book, How to Weave Linens, and that on this same threading draft, there are illustrated at least 5 other fabrics which can be made just by a change in the tie-up. Thus, for instance, if you wanted to make gifts of table-cloths, and wanted each one different, you could use this threading draft, and with a change in tie-up, make at least 5 different table-cloths. And, as I stated, if you were making drapes, and wanted them different for different rooms, you could just change the tie-up, and have a different drape for the other room.

This fabric was woven on a 40" width, Macomber Loom.

I hate to waste the space so I'll do a little advertising here. Our shipment of RAMIE finally came in from Switzerland, and we are very pleased. It is in 15 beautiful colors, and is wash-fast and sunfast. It is in size 16/2, with 2400 yards per lb., and we are very happy to say, that since the duty was lower than expected, it will sell at about \$1.00 per lb. less than originally anticipated. It will be \$1.25 per 4 oz. spool, or \$5.00 per lb. Also, in this same shipment, there was a small lot of 15 lbs. of a 40/2 bleached white RAMIE, with 6,000 yards per lb. This is extremely reasonable, and sells for just \$4.50 per lb., or \$1.25 per 4 oz. spool. If any of you would like samples of these, a self-addressed stamped envelope will insure that you get same. We hope to use the colored RAMIE in a sample soon.

Also, we might mention that we received a shipment of an extremely nice rayon novelty, called THICK AND THIN. It has a boucle twist for a while, and then a thick, nubby boucle for 2 or 3 inches, and then the boucle twist again, etc. It is in 11 nice colors, and sells for the extremely reasonable price of \$1.60 per lb. on cones, and they vary in weight from 1½ to 2 lbs. each. Minimum sale is a cone. If you'd like samples of these, please let us know, as we received 375 lbs. of this also.

Russell E. Groff, Editor



DRAFTS AND DESIGNS

Published monthly (except July and August) by Robin & Russ Handweavers
632 Santa Barbara Street, Santa
Barbara, California

SUBSCRIPTION: \$4.00 per year
Back issues or Single Copies 50¢ each
VOLUME 1, Number 4, December 1958

MORE ABOUT THE FABRIC:

This is an exceptionally nice pattern to use and weave, and this is the second time we've woven it, having featured it in Warp and Weft in Very Fine Linen.

It is easy to weave, being a one shuttle weave, and thus is fairly fast weaving. There are no problems involved in the set-up or treadling.

I think that this material could make excellent upholstery, pillows, and even drapes. When we wove it in the fine linen, we thought of using it for place-mats, for table-cloths, and also for drapes. Still another weaving friend of ours saw other possibilities with this same pattern, and she set it up with 2/18's Fabri for warp. She had 3 threads of a light beige, and then three threads of a little darker beige, and then in the weft she used the same colors as we mentioned being used in the warp. However, she did vary the treadling, and where the treadling given calls for treadles 8, 7, and 8, she used in place of these three, treadles 10, 9, 10. That is why I gave the additional 9 and 10 treadle tie-up in the tie-up draft. I was greatly impressed with the sample, and want to thank Mrs. Charles A. Cone of Troy, Montana, for sending us the sample. This set-up she used would make an extremely effective skirt material, and ever since first seeing it, I've thought of it as being used in a sport coat material. Perhaps I'll get to try it some day.

Incidentally, our sample has not been washed, and it should have been. It would have made it a little firmer fabric and a nicer sample if it had been washed and then steam-pressed. The Ramie colors are sun-fast and wash-fast colors, as we have mentioned

before. The 5/2 mercerized cotton we used for warp is vat dyed and the manufacturer states they are fast colors. This 5/2 mercerized is available in natural and bleached white, and I think that the two of them together would make exceptionally nice drapes if used for both warp and weft.

The 16/2 Ramie is \$5.00 per lb., and is available on 4 oz. spools at \$1.25 per 4 oz. spool. It has 2400 yards per lb. The 5/2 mercerized cotton is available in natural and white and is \$3.50 per lb. We have just the one color in this at present, medor gold, and it is on 1/2 lb. cones, and is \$2.00 per cone.

If any of you ever can use a quantity of this fine cotton in lots of 10 lbs., or more, we can have it dyed at the same place and at the same price in any of approximately 90 different colors. Just wish that we could afford to stock more of it, but it is financially impossible for us to do so.

Russell E. Groff, Editor

JUST ARRIVED

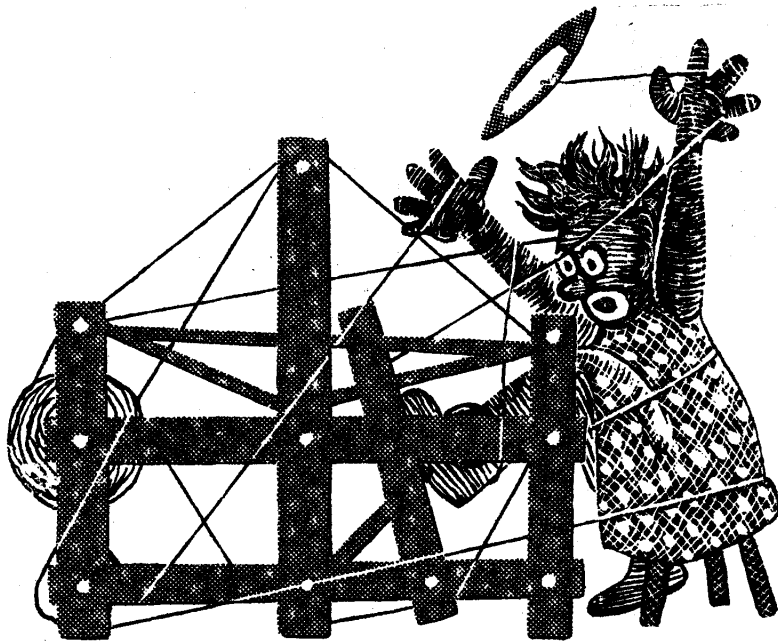
100 lbs. of Linen from Scotland
Single Ply
Bleached White
Slightly Slubby
1200 yards per lb.
Spools, 1 lb. 6 oz. each
PRICE: just \$2.40 per lb.
Strong enough for warp.

JUST ARRIVED

A linen and cotton combination.
Natural cotton
Bleached White Linen Nub.
Large Nub
Yardage: 1800 per lb.
On Cones.
PRICE: \$3.50 per lb.

JUST ARRIVED

Heavy, natural cord silk.
On spools.
1100 yards per lb.
Excellent Warp
Three ply.
Nice Luster or Sheen
PRICE: \$4.00 per lb.



DRAFTS AND DESIGNS

A GUIDE FOR 5 TO 12

HARNES WEAVES

BARLEYCORN DOUBLE DIAMOND

An all over 5 (five) harness barley-corn pattern, excellent for drapes, upholstery, place-mats and table linens.

THREADING DRAFT:

| | | | | | | | | | | | |
|---|-----|-----|-----|-----|-----|-----|-----|-----|-----|-----|-----|
| 5 | | | X X | | | X X | | | | X X | |
| 4 | | X X | | X X | X X | | X X | | | | X X |
| 3 | X X | | | X X | | X X | | X X | | | X X |
| 2 | X X | | X X | | | X X | | | X X | | |
| 1 | X X | X X | X X | X X | X X | X X | X X | X X | X X | X X | X X |

TIE-UP DRAFT

| | | | | | | | | |
|---|---|---|---|---|---|---|---|--|
| 5 | X | X | X | | | | X | |
| 4 | | X | X | X | | | X | |
| 3 | X | | X | X | | | X | |
| 2 | X | X | | X | | | X | |
| 1 | | | | | X | | | |
| | 1 | 2 | 3 | 4 | 5 | 6 | | |

The threading draft above is read from left to right. Repeat over and over as given above, and on the last repeat, be sure to add 5 threads, threaded on harnesses 1,2,1,2,1.

WARP USED:

The warp used was a 40/2 bleached white Ramie (same as linen), having 6000 yards per lb. This is called a 3/4 bleached white.

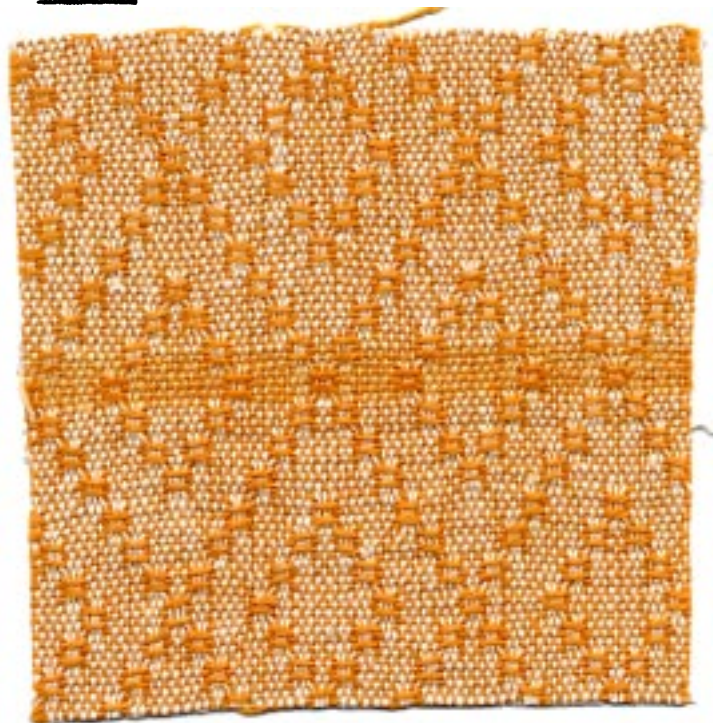
WEFT USED:

The weft used was a 16/2 Ramie, imported from Switzerland, and the color is called "Pumpkin Yellow."

REED USED:

An 18 dent reed was used and the 40/2 3/4 bleached white Ramie was set at 36 threads per inch, or two threads per dent in the 18 dent reed.

SAMPLE:



DRAFTS AND DESIGNS

Published monthly (except July and August by Robin & Russ Handweavers, 632 Santa Barbara St., Santa Barbara, California.

SUBSCRIPTION:

\$4.00 per year. Back issues or single copies are 50¢ each.

VOLUME 1, Number 5, January 1959

TIE-UP DRAFT:

In the tie-up draft as given above, the plain weave or tabby treadles are treadles numbered 5 and 6. However, in weaving this particular pattern, you do not use treadle number 6 unless you actually want a hem on each end of your patterned material. The pattern is woven using just the first 5 treadles, and as mentioned above, only one of these is a tabby, and that is treadle number 5.

TREADLING:

Note that the number 5 treadle is actually the A tabby treadle and number 6 treadle is the B tabby treadle. For convenience's sake, we will refer to these from now on as treadle number 5 and treadle number 6, rather than A or B tabby treadles.

There are 56 threads in one treadling repeat and then you start the treadling over again. On your last repeat, instead of 56 threads, you will add an additional 5,4,5,4, and thus your last repeat will be 60 threads.

For convenience, we will list 8 treadles in each of the following rows, and you will treadle the first row from left to right, and then go on to the second row and treadle from left to right, etc., until all 56 threads or one repeat has been finished. Treadle as follows:

5,4,5,4,5,1,5,1,
5,2,5,2,5,3,5,3,
5,4,5,4,5,1,5,1,
5,2,5,2,5,3,5,3,
5,2,5,2,5,1,5,1,
5,4,5,4,5,3,5,3,
5,2,5,2,5,1,5,1
Repeat over and over

MORE ABOUT THE FABRIC:

This is a very easy fabric to weave and a very enjoyable one. What

particularly pleased us was the 40/2 bleached white Ramie Warp. In some 12 yards of this warp, we had actually only one broken thread in the entire length, and this was where a knot in the warp separated or came apart. We did find that there was just a little tendency for the Ramie warp to fuzz slightly, but we eliminated this almost entirely by beating the weft with the shed open, changing the shed with the beater back against the last weft thread, and then beating again. As this is an all Ramie fabric, it is similar to linen, and requires a double beat for firmness.

The 16/2 Ramie for weft was easy to use and presented no difficulties whatsoever. We did have a few knots in the 16/2 which were cut out, but that was the only extra treatment involved in the weft.

I think that this fabric would make particularly good table linens, placemat settings, etc. Also, it would or should be particularly good for drapes, and in other colors for upholstery. The Ramie, after the initial washing, should not shrink. However, it will shrink just a little on the first washing. Then, too, the colors are supposed to be sunfast and washfast as advertised by the dyers of this thread in Switzerland.

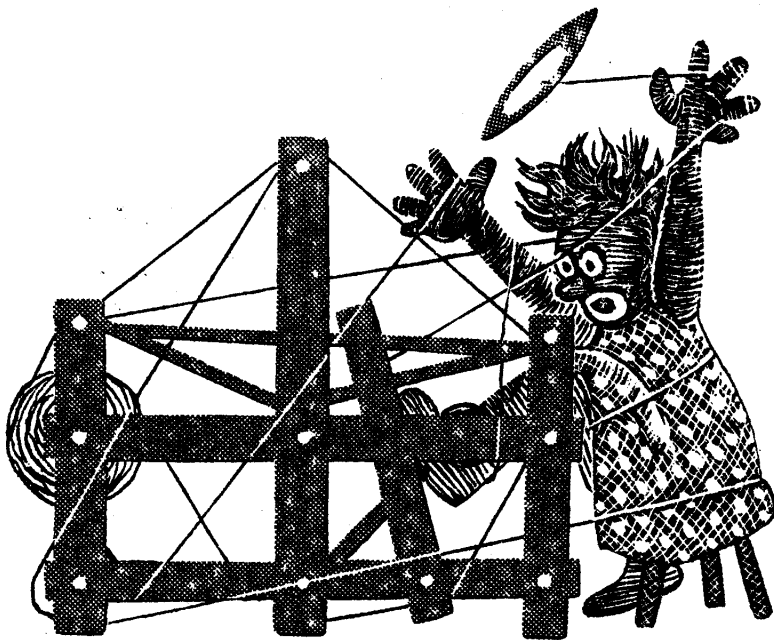
COST OF THREADS USED IN THE FABRIC:

The 40/2, bleached white Ramie costs a reasonable \$4.50 per lb. It comes from Switzerland on spools of approximately one pound each. If any of you would like four (4) ounces of this, we will wind it off for you on 4 oz. spools. The 4 oz. spools are \$1.15 each.

The 16/2 colored Ramie used in the weft is \$5.00 per lb., and it comes also on approximately one pound spools. However, the same applies to the 16/2. If anyone would like a 4 oz. spool of any of the 15 colors, we will be glad to wind off a 4 oz. spool at \$1.25 each.

We did not keep track of how much weft was used, but we can tell you that it took 2 lbs. 5 oz. of the 40/2 white for a 12 yard warp, 36 threads per inch, and 32 inches wide. This makes the actual warp cost per yard come to \$1.00 per yard length, and 32" width.

Russell E. Groff, Editor



DRAFTS AND DESIGNS

A guide for 5 to 12
harness weaves

HEATHER FLOWERS

An all over overshot spot design woven on 6 harnesses. For decorative clothing fabric, and for pillows, and drapes, etc.

THREADING DRAFT

| | | | | | | | | | | |
|---|---|---|---|---|---|---|---|--|---|---|
| 6 | X | O | X | X | X | | | | X | |
| 5 | | X | O | X | X | | | | X | X |
| 4 | | | | | | X | | | X | |
| 3 | | | | X | | | X | | | |
| 2 | | | | | | | X | | | |
| 1 | | | | | X | | | | | |

TIE-UP DRAFT

| | | | | | | | |
|---|---|---|---|---|---|--|--|
| 6 | | | X | X | X | | |
| 5 | X | | | X | X | | |
| 4 | | X | | | X | | |
| 3 | X | | | | X | | |
| 2 | | X | X | | | | |
| 1 | X | | X | | | | |
| | 1 | 2 | 3 | 4 | | | |

WARP USED:

A Rose Heather, size 2/17's worsted was used for the Warp. It has 4700 yards per lb., and comes on 1/2 lb. spools.

WEFT USED:

A Rose Heather (same as warp) was used for the plain weave and tabby in this fabric. A 3 ply sport yarn, in red and black was used for Rose or Flower.

REED USED:

A 10 dent reed was used, and the Rose Heather was double sleyed, 2 ends per dent, or a total of 20 threads per inch.

KEY TO COLORS IN WARP:

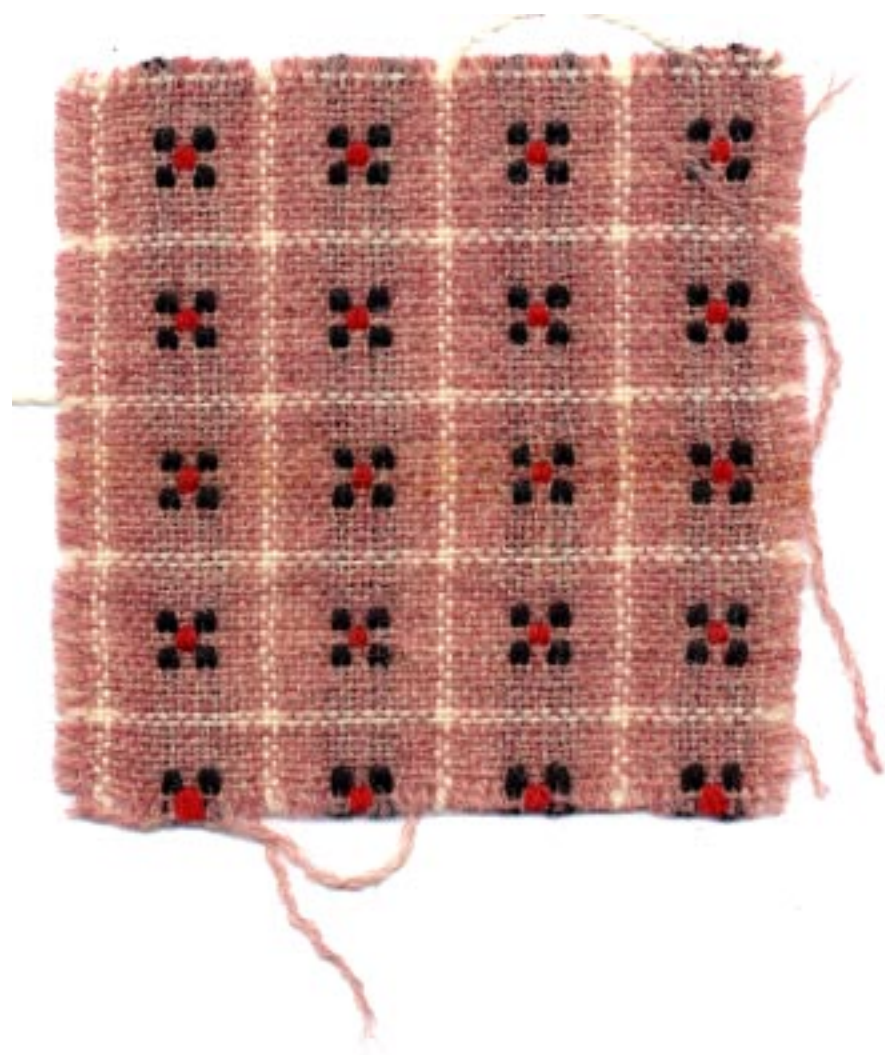
X----represents 2/17's Rose Heather
O----represents 2/18's White Fabri

NOTE:

Please note that we forgot to mention that the white 2/18's fabri was used in the warp with the Rose Heather, and it was also used in the weft in the plain weave with the Rose Heather.

Sample

Sample on next page.



DRAFTS AND DESIGNS

Published monthly (except July and August) by Robin & Russ Handweavers
632 Santa Barbara Street, Santa
Barbara, Calif.

SUBSCRIPTION: \$4.00 per year
Back issues or single copies 50¢ each
VOLUME 1, Number 6, February, 1959

TREADLING:

Here is the treadling, as we did it
in the fabric on other side.

Treadle # 2--2/18's White Fabri
Treadle # 1--2/18's White Fabri
Treadle # 2--2/17's Rose Heather
Treadle # 1--2/17's Rose Heather
Treadle # 2--2/17's Rose Heather
Treadle # 1--2/17's Rose Heather
Treadle # 2--2/17's Rose Heather
Treadle # 1--2/17's Rose Heather
Treadle # 2--2/17's Rose Heather
Treadle # 3--Black 3 ply Sport Yarn
Treadle # 1--2/17's Rose Heather
Treadle # 3--Black 3 ply Sport Yarn
Treadle # 2--2/17's Rose Heather
Treadle # 4--Red 3 ply Sport Yarn
Treadle # 1--2/17's Rose Heather
Treadle # 4--Red 3 ply Sport Yarn
Treadle # 2--2/17's Rose Heather
Treadle # 3--Black 3 ply Sport Yarn
Treadle # 1--2/17's Rose Heather
Treadle # 3--Black 3 ply Sport Yarn
Treadle # 2--2/17's Rose Heather
Treadle # 1--2/17's Rose Heather
Treadle # 2--2/17's Rose Heather
Treadle # 1--2/17's Rose Heather
Treadle # 2--2/17's Rose Heather
Treadle # 1--2/17's Rose Heather

REPEAT OVER AND OVER AS DESIRED.

MORE ABOUT THE FABRIC

I think that this fabric would have a
multitude of uses. I think that it would
be very attractive in a woman's Jumper,
It should work well on a bed-spread,
on skirts and jackets and other such
items.

We wove this sample first of all
without the white threads in the warp
and weft. You would be surprised, as
we were, at how much more attractive

it appeared to us when the white Fabri
was added.

Then, we wove the little flower in
different weights and in different
color combinations. I think that one of
the most attractive was when we used
a cream white and an aqua thread in the
rose, the cream white wool being the 4
corners, and the aqua the center. After
looking at this sample again, we are
now sorry that we didn't weave it in
this combination.

And another nice thing is that you can
place these flowers as far apart or as
close together as you would like.

One warning. You have to be careful
that you do not use different kinds of
wool with different elasticity, particu-
larly in the flower pattern. Also, do
not hold it too taut when weaving, or
the flower threads might tend to pull
the fabric together and wrinkle the
fabric itself.

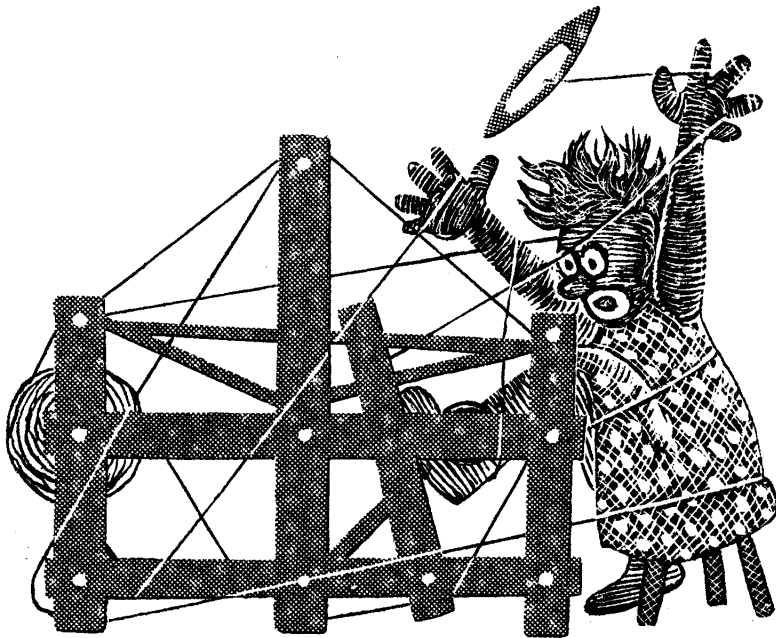
You might even have to cut the long
floats of the flower thread on the back
of the fabric before you use it to
eliminate such tendency to more or less
curl up.

This heather yarn is available in about
6 different combinations. It comes on
1/2 lb. spools, and it is priced the same
as Fabri now, that is \$6.80 per lb., or
\$3.40 per 1/2 lb. spool. The 3 ply
sport yarn is the same price, and if
desired you can purchase it in 2 oz.
spools for \$1.00. If you should like
samples of the heather, let us know, send
us a stamped, self addressed envelope,
and we will send you samples of these.

THIS SAMPLE WAS WOVEN ON A MACOMBER
AD A HARNESS LOOM.

The idea for this fabric was from one
of those Finnish texts, "KOTIEN JA KOUL-
UJEN KANGASPUIHIN." It is \$5.00, and
well worth while for the multiple harness
weaver.

Russell E. Groff, Editor



DRAFTS AND DESIGNS

A guide for 5 to 12
harness weaves

EXTENDED POINT TWILL

A one shuttle weave on an extended point twill threading draft, that has many, many uses. It can be used for drapes, for upholstery, and particularly for table linens, etc.

THREADING DRAFT

| | | | | | | | | | |
|---|---|---|---|---|---|---|---|---|---|
| 8 | | X | | X | | | | | X |
| 7 | X | | X | X | | X | X | | X |
| 6 | X | X | | X | X | | X | | X |
| 5 | X | | X | | X | | | | X |
| 4 | | | | | X | | X | X | X |
| 3 | | | | | X | X | X | X | X |
| 2 | | | | | X | X | X | X | X |
| 1 | | | | | X | | X | | X |

TIE-UP DRAFT

| | | | | | | | | | |
|---|---|---|---|---|---|---|---|---|--|
| 8 | | X | X | | | | X | X | |
| 7 | | | X | | | | | X | |
| 6 | X | X | | X | X | | | | |
| 5 | X | X | X | X | X | X | | | |
| 4 | | | X | X | | X | X | | |
| 3 | | | | X | X | | X | X | |
| 2 | X | | | | X | X | | X | |
| 1 | X | X | | | | X | X | | |

1 2 3 4 5 6 7 8

WARP USED

A size 20/2 Pale Pink Egyptian Cotton was used for Warp. It has 8400 yards per lb., and comes on 1/2 lb. spools.

WEFT USED:

A size 10/2 cotton in assorted colors was used for weft.

REED USED:

A 15 dent reed was used, and it was double sleyed, 2 ends per dent, making a total of 30 ends per inch.

TREADLING:

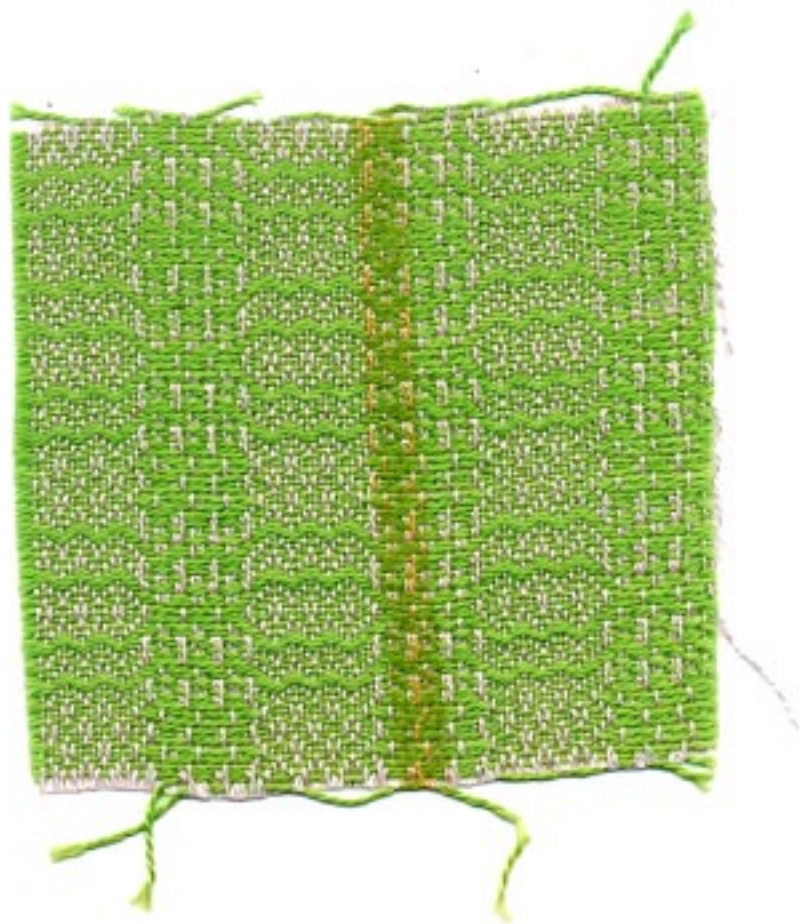
Just one shuttle was used for the treadling, and the treadling sequence was as follows:

1,2,3,4,5,6,7,8;1,2,3,4,5,6,7,8;
7,6,5,6,7,8,7,6,5,4,3,2,1,8,7,6,
5,4,3,2,1,8,7,6,5,6,7,8.

REPEAT OVER AND OVER AS DESIRED

SAMPLE

Sample on next page.



DRAFTS AND DESIGNS

Published monthly (except July and August) by Robin & Russ Handweavers, 632 Santa Barbara Street, Santa Barbara, California.

SUBSCRIPTION: \$4.00 per year

Back issues or Single Copies 50¢ each
VOLUME 1, Number 7, March 1959.

MORE ABOUT THE FABRIC:

This is a very easy to weave pattern, particularly with just one shuttle.

It is also a very versatile pattern, as with just a change of tie-up, you can achieve an entirely different fabric. We tried about 3 different tie-ups, and there are many more that can be worked out accordingly.

The idea for this fabric came from a sport shirt that we saw a handweaver wearing, while in Long Beach, California, last summer on a business trip. It is a very commonly used extended point twill pattern, and the fabrics from it can be adapted to almost any use.

For WEFT, we used a 10/2 cotton in various colors. We wove about 2 yards each, using for each two yard length, light grey, pale green, rose beige, and an aztec brown. On the pink warp, these were all nice, but my personal preference was the rose beige color. The samples will vary, as we do not have enough of all one color to make all of our sample sheets.

Also, I would like to make some suggestions as to how to improve this fabric. We used the warp sett at 30 per inch, but I myself feel that if it had been 36 per inch, it would have resulted in a firmer fabric, and a more practical one. Also, it could have been beat just a little tighter than we did, and again I think it would have been more satisfactory.

We have a 12/3 spun silk, natural, that I would have liked to see used for this fabric, sett at 45 per inch. Then for weft, almost any smooth silk would be satisfactory, as well as 10/2 and 20/2 cottons. Of course, the size 20/2 is the more popular, as it makes a finer fabric for shirting, etc.

I would also like to see this fabric woven with a 40/7 linen or a 40/2 ramie

warp thread, sett at a minimum of 36 threads per inch, and perhaps even 40 per inch, and then for weft, you could use a linen singles, perhaps a 20/1, or even a silk, or cotton. I would prefer it to be a smooth thread, rather than a texture.

I noticed that this particular pattern is given in the Edgar E. Worst Book, HOW TO WEAVE LINENS, with several different treadlings, and tie-ups given. If you do have this book and weave any of the given treadlings, be sure and check the treadling, as we compared ours to the book, and found that there were mistakes in two different treadlings, that were given for this pattern. The tie-up and treadling is given for about 6 different fabrics.

The 20/2 Egyptian cotton used for warp is \$5.00 per lb., or \$2.50 per 1/2 lb. spool. The weft thread was various colors in a 10/2 cotton. Both the warp and weft are fast colors, and both are the same price, \$5.00 per lb., and both come on 1/2 lb. spools.

OUR SAMPLE WAS WOVEN ON A MACOMBER ADD A HARNESS LOOM.

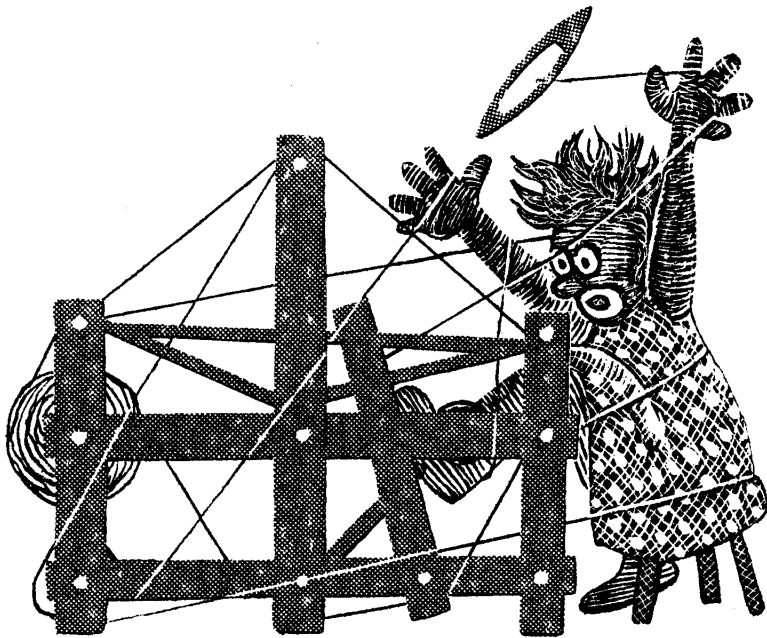
Russell E. Groff, Editor

JUST ARRIVED

100 lbs. of 4 Ply Silk Warp thread.
Extra strong for warp.
3,000 yards per lb.
3/4 to 1 lb. cones.
HIGH SHEEN OR LUSTER
\$6.00 per lb., or \$1.75 per 4 oz.
Slightly slubby in texture.

JUST ARRIVED

50 lbs. of 12/3 SPUN SILK THREAD.
For Warp or Weft.
9,600 yards per lb.
Good at 30 to 40 threads per inch.
Same as in our October sample.
Approximately 1/2 lb. spools.
\$8.00 per lb.



DRAFTS AND DESIGNS

A guide for 5 to 12
harness weaves

Volume 1, No. 8, April 1959

THREADING DRAFT

| | B | | | | A | | | |
|----|---|---|---|---|---|---|---|---|
| 10 | | X | | | X | | X | |
| 9 | | X | X | | X | | X | |
| 8 | | X | X | | X | | X | |
| 7 | | X | X | | X | | X | |
| 6 | | X | | X | X | | X | |
| 5 | | X | | X | X | | X | |
| 4 | | X | | X | X | | X | |
| 3 | | X | | X | X | | X | |
| 2 | | X | X | X | X | X | X | X |
| 1 | | X | X | X | X | X | X | X |

TIC-TAC-TOE

An unusual ten harness pattern that would make nice material for sport shirts, for table coverings, for upholstery, and many other uses.

THREADING PLAN

This threading plan is for a warp 40" width, 30 threads per inch.

A. Plain, 18 thread

| | |
|---------------------------|------|
| A. 18 threads, 2,1 | 18 |
| B. Pattern, 18 times | 1116 |
| C. Repeat A to B, to bal. | 47 |
| D. 19 threads, 1,2, | 19 |
| Total threads in set-up | 1200 |

WARP USED:

The warp used was a 24/3 natural, unmercerized Egyptian cotton, with 6720 yards per lb. It comes on 1/2 pound spools, and is priced at \$3.50 per lb.



DRAFTS AND DESIGNS

Published monthly (except July and August) by Robin & Russ Handweavers, 632 Santa Barbara Street, Santa Barbara, California.

SUBSCRIPTIONS: \$4.00 per year.

Back issues or single copies, 50¢ ea. Yearly subscriptions start with the September issue. If you subscribe after September, back issues from September on will be mailed to you, unless you specify that you want your subscription to start with the next September issue. VOLUME 1, Number 8, April, 1959.

WEFT USED:

On part of our sample, we used a 1/2 spun douppioni silk, color pink as weft. This has 5800 yards per lb., and is \$7.00 per lb., or \$2.00 per 4 ounce spool.

On another part of the weft, we wanted a different texture to see which we liked best, so we used a 10/2 mercerized and gassed cotton, color, Appenzell, or light grey. Actually, the pastel shades in all colors probably would have been more striking than the light grey.

TIE-UP DRAFT:

| | | | | | | | | | | |
|----|---|---|---|---|---|---|---|---|---|----|
| 10 | X | X | X | | X | | | | | |
| 9 | | | | | | X | | X | X | X |
| 8 | X | X | | X | X | | | | | |
| 7 | | | | | | X | X | | X | X |
| 6 | X | | X | X | X | | | | | |
| 5 | | | | | | X | X | X | | X |
| 4 | | X | X | X | X | | | | | |
| 3 | | | | | | X | X | X | X | |
| 2 | X | X | X | X | X | | | | | |
| 1 | | | | | | X | X | X | X | X |
| | 1 | 2 | 3 | 4 | 5 | 6 | 7 | 8 | 9 | 10 |

PLAIN WEAVE IS ON TREADLES 5 and 6.

TREADLING:

The treadling that is given just below is for the sample as we wove it. We will just list the treadles by number, and we will divide the treadling into 4 parts, A, B, C, D, in order to explain the treadling a little better.

- A. 4,7,3,8,2,9,1,10,1,9,2,8,3,7,4
- B. 6,5,6,5,6,5,6,5,
- C. 10,1,9,2,8,3,7,4,7,3,8,2,9,1,10,
- D. 5,6,5,6,5,6,5,6.

Repeat over and over as desired.

B. and D. are plain weaves.

A. is for the row beginning with X.

C. is the row beginning with O.

We gave the treadling in this manner, as it is important that you get the correct number of plain weave threads between each portion of the pattern. Also, you have to make sure that the plain weave is started on the correct treadle as we have given it above. If you start on the wrong plain weave treadle, you will have a mistake in your pattern. Also, you can have the plain weave more than the 8 threads we give above, just so that you always add groups of 2 plain weave threads and not one.

MORE ABOUT THE FABRIC:

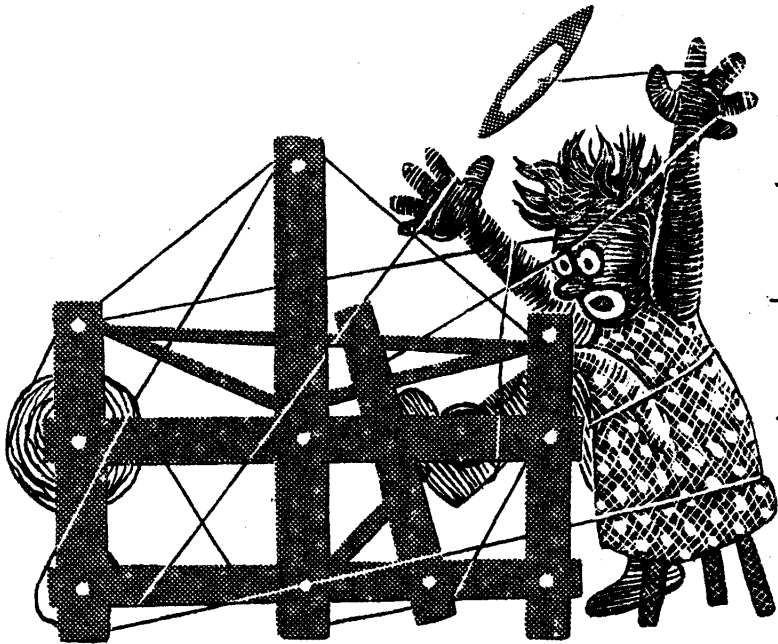
Wanting to try something a little different, we used a 24/3 natural unmercerized Egyptian cotton for warp. It is a good strong thread, and worked very well. However, it does have a tighter twist than most threads do, and sometimes it tends to curl or wrap around the other threads in the set-up only. No trouble whatsoever after it was set-up.

We used a 10/2 appenzell cotton in the weft, and this worked out very nicely. We also used a pink 7/2 spun douppioni silk in the weft, and we liked this even better. It would also work in other pastel colors such as gold, light grey, white, light blue, and aqua. We liked the silk, as it had a slight slubbiness to it, to give just a little texture to what would otherwise be a perfectly plain fabric, except for the pattern. Other colors in the pastels in 10/2 cotton would also work very well such as pale green, pale blue, pink, lavender, beige, etc.

This is sometimes called a dropped tabby weave, as you can see from the tie-up, that part of the tabby is dropped on each of the pattern treadles to create the pattern.

All the materials used in this sample are available from Robin & Russ Handweavers.

--Russell E. Groff, Editor



DRAFTS AND DESIGNS

A guide for 5 to 12

Harness weaves

Volume 1, No. 9, May 1959

DEMI-DAMASK OR IMITATION DAMASK

An 8 harness weave, similar to a two block-ten harness damask weave, for use in table-cloths, mats, linens, etc.

THREADING DRAFT

| | | | | | | | | | |
|---|---|----|---|---|---|----|--|---|--|
| 8 | X | | X | | | | | | |
| 7 | X | | | X | | | | | |
| 6 | X | | X | | | | | | |
| 5 | X | | | X | | | | | |
| 4 | | | | | X | | | X | |
| 3 | | | | | X | | | X | |
| 2 | | | | X | | | | X | |
| 1 | | | X | | | | | X | |
| | | B. | | | | A. | | | |

Sample on next page.

PROFILE DRAFT

| | | | | | | | | | | |
|---|--------|--------|-----|------------|------------|-----|------------|------------|-----|-----|
| B | XXXXXX | XXXXXX | XX | XXXXXXXXXX | XXXXXXXXXX | XX | XXXXXXXXXX | XXXXXXXXXX | XX | |
| A | XXXXX | X | XXX | XXX | X | XXX | XXX | X | XXX | XXX |

| | | |
|---|----------|----------|
| B | XXXXXXXX | XXXXXXXX |
| A | X | XXXXX |

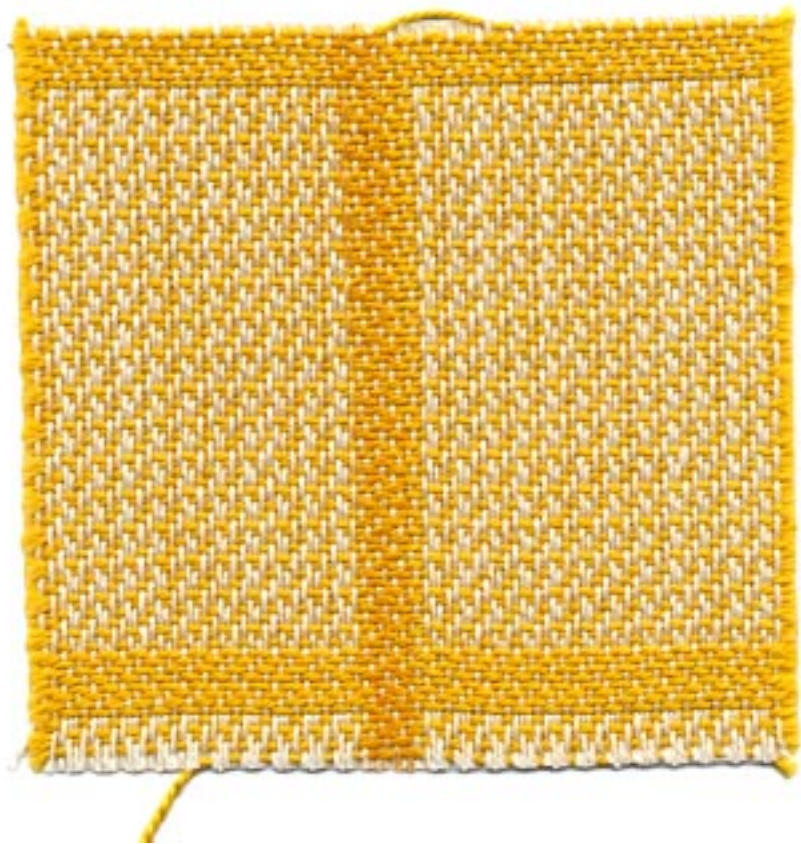
TIE UP DRAFT

| | | | | | | | | | |
|---|---|---|---|---|---|---|---|---|--|
| 8 | X | | | | X | X | X | | |
| 7 | | X | | | X | X | | X | |
| 6 | | | X | | X | | X | X | |
| 5 | | | | X | | X | X | X | |
| 4 | X | X | X | | X | X | X | | |
| 3 | X | X | | X | X | X | | X | |
| 2 | X | | X | X | X | | X | X | |
| 1 | | X | X | X | | X | X | X | |
| | 1 | 2 | 3 | 4 | 5 | 6 | 7 | 8 | |

MORE ABOUT THE PROFILE DRAFT

The profile Draft (in this case) reads from left to right while the threading draft normally reads from right to left. This profile draft is for a table cloth, 39-3/4" wide, 24 threads per inch. You will have 8 warp ends not in use when set-up, using 952 instead of 960 warp ends.

The threading draft consists of two different blocks, Blocks A and B. Each of these blocks, A and B, consists of 8 threads each. Thus you thread block A as many times as it is given in the profile draft, in this case to begin, you thread Block A, 5 times, giving you a repeat of 40 threads. Then you go on to block B, and you will note that in the threading draft,



DRAFTS AND DESIGNS

Published monthly (except July and August) by Robin & Russ Handweavers, 632 Santa Barbara Street, Santa Barbara, California.

SUBSCRIPTION: \$4.00 per year

Back issues or single copies 50¢ each
VOLUME 1, Number 9, May 9, 1959

it is repeated 6 times. Thus, you thread 6 repeats of Block B, or 48 threads. The Third block is the A block again, and in threading you will note on the profile draft, it is given only once; so you thread Block A just one time, giving you 8 threads. You repeat this over and over until you have the complete width of the loom set up.

If you have a 40" width set-up, 24 threads per inch, your pattern should work out perfectly, with 8 threads left over, as to balance this pattern, and make it the same on both sides, it takes 952 of the 960 warp threads. The extra 8 threads, we put on the loom, and wound it up as we used up the warp.

WARP USED:

The warp used was a 20/2 bleached white ramie, which has 3000 yards per pound, comes on 1 lb. cones, and is priced at \$3.20 per lb.

WEFT USED:

The weft used was a 5/2 mercerized cotton, similar to a perle 5, which we had dyed a medor gold color. It is a beautiful cotton, but we are sorry to say it is also an expensive one, as it is \$4.00 per lb. It comes on 1/2 pound cones.

REED USED:

A 12 dent reed was used, and the warp was double sleyed, 2 ends per dent, or 24 threads per inch.

TREADLING

Just as in the threading draft, there are two main blocks in the treadling. Each of these blocks consists of 8 threads.

Block A--4,2,3,1,4,2,3,1
Block B--8,6,7,5,8,6,7,5

You weave the fabric in the sample just as the profile drafts directs you to. The first block is Block A, and as you look at the profile draft, you see that Block A is repeated 5 times. That means that you repeat Block A in the treadling 5 times, giving you a repeat of 40 threads.

Then Block B is given in the profile draft as 6 X'S or 6 times. Thus, you treadle exactly the same, treadle Block B 6 times giving you a repeat of 48 threads. Then you repeat A & B Blocks over and over just as is repeated in the profile draft.

MORE ABOUT THE FABRIC:

Believe it or not, this is a particularly easy fabric to weave. the 20/2 bleached Ramie was an excellent warp, giving no trouble whatsoever. There were no broken threads, and there are very, very few knots in the Ramie Warp.

We did use a very tight beat, to try and make this as firm a fabric as is possible. The weft thread of 5/2 cotton is a little heavier than the warp, having just 2100 yards per lb., and as we tried for a squared effect, we did beat it a good double beat.

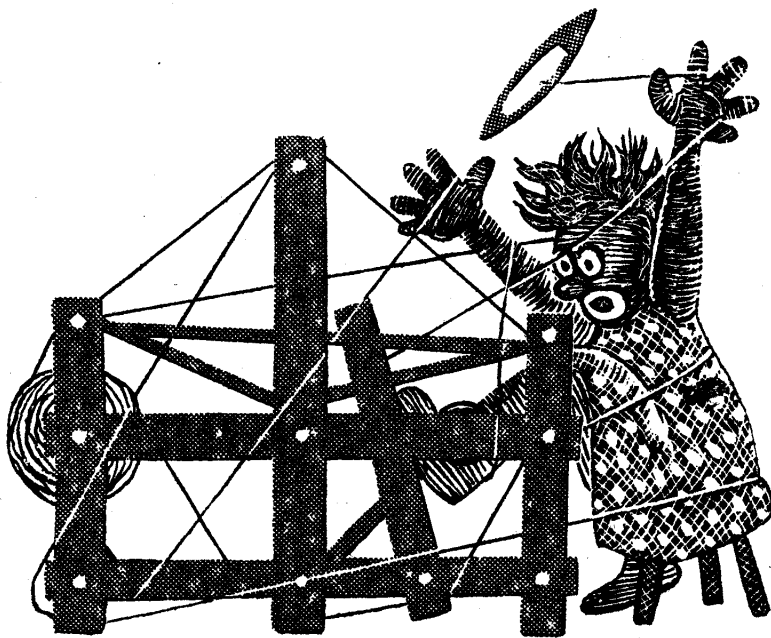
This pattern is a very adaptable one and could be used for many different fabrics. I myself think that it would make beautiful drapery. I have seen it used in place-mats that were exceptionally striking.

It is an entirely reversible fabric, as you can see from the sample, the back being just the opposite color from the top.

If you want to emphasize the blocks and background differences, I would suggest that you use a warp with not too much sheen, and then a weft with a much higher sheen. In other words, a dull finish thread for warp, and a shiny finish thread for weft or vice versa.

If you weave it in linen or Ramie, I would suggest that you use a bleached white for warp, and a natural for weft.

--Russell E. Groff, Editor



DRAFTS AND DESIGNS

A guide for 5 to 12

harness weaves.

Volume 1, No. 10, June 1959

THREADING DRAFT

| | | | | | | | | | | | | |
|---|---|---|---|---|---|---|---|---|---|---|---|---|
| 8 | X | X | X | | | | X | X | | X | X | X |
| 7 | | X | X | | | | X | X | X | X | | X |
| 6 | X | X | | | | X | X | X | X | X | | X |
| 5 | X | | | | X | X | X | | X | X | X | X |
| 4 | | | | X | X | X | | | X | X | X | |
| 3 | | | X | X | X | | | | X | X | X | |
| 2 | | | X | X | X | | | | X | X | X | |
| 1 | | X | X | X | | | | | X | X | X | |

DANCING DIAMONDS

An excellent pattern and fabric that can be used for bed-spreads and for upholstery materials.

TIE-UP DRAFT

| | | | | | | | | |
|---|---|---|---|---|---|---|---|---|
| 8 | X | X | | X | | X | | X |
| 7 | X | X | X | | X | | X | |
| 6 | | X | X | X | | X | | X |
| 5 | X | | X | X | X | | X | |
| 4 | | X | | X | X | X | | X |
| 3 | X | | X | | X | X | X | |
| 2 | | X | | X | | X | X | X |
| 1 | X | | X | | X | | X | X |
| | 1 | 2 | 3 | 4 | 5 | 6 | 7 | 8 |

WARP USED:

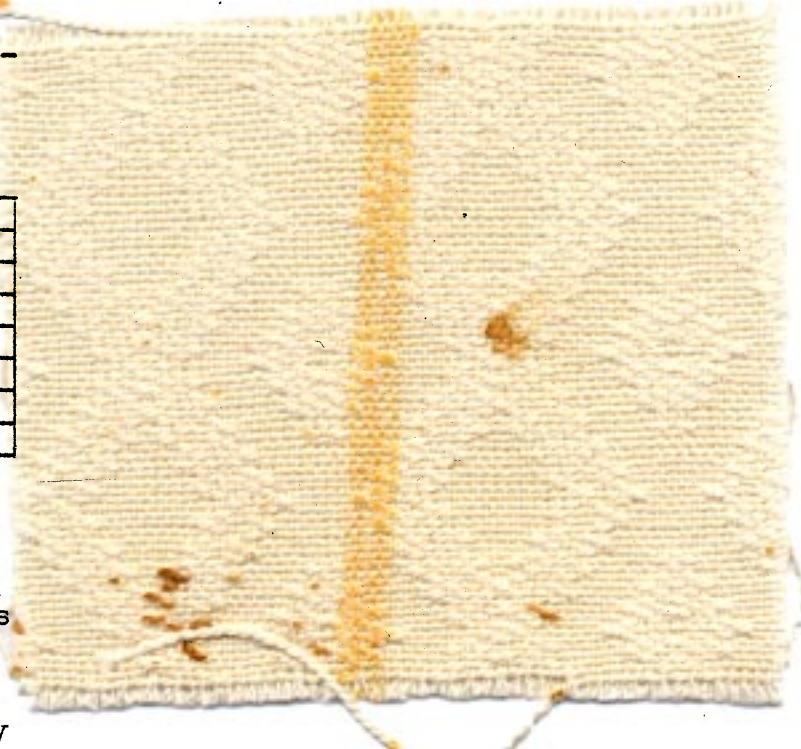
The warp was a $24/3$ natural Egyptian cotton, unmercerized, which has 6700 yards per lb. It comes on 1/2 lb. spools and is \$3.50 per lb.

WEFT USED:

The weft used was a beautiful quality mercerized perle cotton, perle 5, or a size 5/2 cotton as it is often called. It has 2100 yards per lb., and comes on 1 lb. cones, and is \$3.50 per lb. It is available only in natural and white at present.

REED USED:

The reed used was a 15 dent reed, and it was double-sleyed, or 2 ends per dent, making a total of 30 ends per inch.



DRAFTS AND DESIGNS

Published monthly (except July and August) by Robin & Russ Handweavers
632 Santa Barbara Street, Santa
Barbara, California.

SUBSCRIPTION: \$4.00 per year
Back issues or Single Copies 50¢ each
VOLUME 1, Number 10, June 1959

TREADLING USED:

The treadling has a simple progression sequence which is quite easy to follow. It is as follows:

1,2,3,2,3,4,3,4,5,4,5,6,5,6,7,6,7,8,
7,6,7,6,5,6,5,4,5,4,3,4,3,2,3,2 and
then repeat from beginning again.

SOURCE OF THE PATTERN:

The idea for this fabric comes from an excellent Norwegian Book, HANDBOK I VEVING, by Caroline Halvorsen. We used the same threading draft and tie-up as is given in this book, but an entirely different treadling sequence than is given. We made quite a few samples on various treadling sequences, and this one was our favorite. The book, HANDBOK I VEVING, is priced at \$4.50 and is an excellent source of patterns from 4 to 12 harnesses. Many weavers that we know, consider it to be the best of the Scandinavian texts on weaving that is available. It is in stock in our studio at present, and postage is extra.

MORE ABOUT THE FABRIC:

This is a very easy to weave fabric, and all the time we were weaving it, we kept thinking that it would make excellent upholstery in various color combinations. Actually, when we planned it, we had the making of a bed-spread in mind, and we feel that this would also be a very practical use for this type of fabric, and it could be in natural, or in white as we did it, or in almost any color combination. I do think that it would have been even better if we had set the 24/3 natural Egyptian cotton at 36 ends per inch instead of 30 as we did. Also, a finer weft, such as a tightly twisted 10/3 cotton could be used to make a lighter weight fabric.

I'm not an authority enough that I can tell you exactly what class of weave this is, but I can say that I think it is a distinct twill variation, and that I would call it a rhythmic weave or put it in the rhythmic weave classification, which actually contains many weaves not specifically classified otherwise.

I might also mention that if you use a treadling of 1 to 8 and repeat it over and over, you get another very interesting ribbed effect, and to my way of thinking, this weave almost falls into the imitation Damask group, except for the long warp floats on the back.

I would like to learn more about this type of weave myself, so if anyone can suggest or give me more information about it, it will be appreciated.

This fabric was woven on a Macomber, Add-A-Harness Loom, utilizing 8 of the 12 harnesses that we have on the loom.

I often feel that one of my main shortcomings in weaving is the use of more color. I seem to be in the spot where I like to use naturals and beiges. However, we will try and make more of an effort in some of our future samples to use more color and more texture in both the warp and the weft if we possibly can.

We have just planned a very interesting 6 harness weave in an unusual but nice color arrangement, and that is what we will feature in our next issue. It will be a fabric for suiting, for sport-coats for men, and tailored suits and coats for women.

—Russell E. Groff, Editor

P.S. Enclosed is a brochure on our book sale which will continue through to the last of August. We hope that you will be able to take advantage of it. Also, enclosed is a brochure on what we consider to be the best table loom on the market, the MISSOURI loom. It is 4 harness, 22", completely folding, even with warp on, and a very durable loom. We have used 6 of these for 9 years in the Adult Education class we teach, and they have stood up to wear and tear better than any of the many other table looms we have tried. PRICE ON THE LOOM IS \$75.00 plus shipping. It can be converted to a floor loom by purchasing the legs and treadle-tie-ups extra and they cost \$21.00.