



drafts and designs

a guide for 5 to 12 harness weaves

Volume 10, Number 1, September, 1967

A SIX HARNESS FLOWER-BED

Many of you have seen this little flower pattern worked out in eight harnesses, but you seldom see it written on a 6 harness draft, so here it is in the 6 harness version.

THREADING DRAFT

6			X		X		
5			X			X	
4		X				X	
3	X						X
2	X						X
1			X				X

TIE-UP DRAFT

6	0	0	0	0			0	
5	0	0	0			0		0
4	0	0			0	0	0	
3	0			0	0	0		0
2			0	0	0	0	0	
1		0	0	0	0			0
	1	2	3	4	5	6	7	8
			A	B				

WARP

A 40/2 bleached white ramie was used for your warp in this sample. You could use a 40/2 bleached white linen if you desire.

WEFT

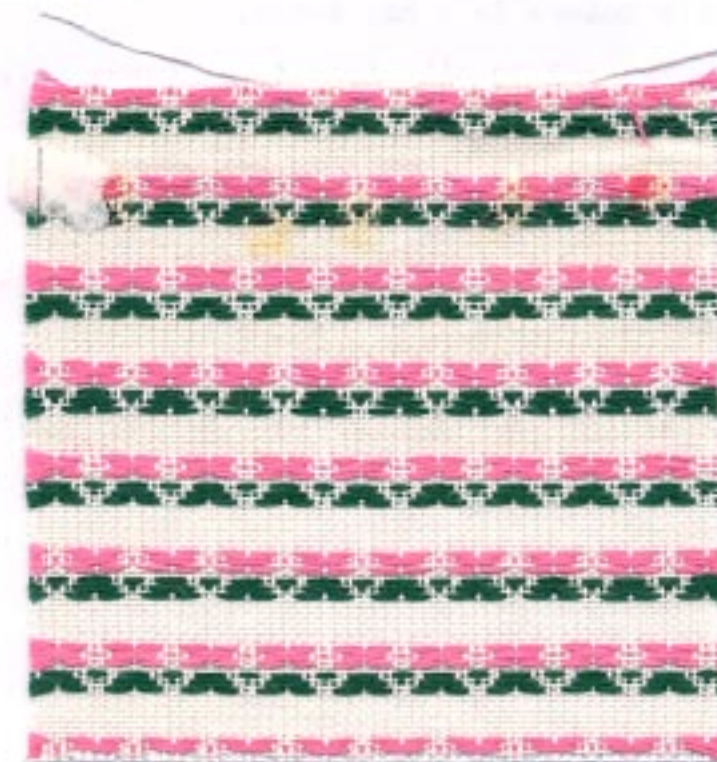
The pattern threads in the flower pattern are a 20/2 mercerized and gassed Egyptian Cotton, which we tripled and

Sample on next page

wound 3 ends together on one bobbin to make a type of floss out of it. For the leaves, we used the EVERGREEN color, and for the main part of the flowers, we used a FRENCH ROSE color. Remember, these threads are not plied, but the 3 ends of 20/2 cotton all lie parallel to one another, rather than being plied.

For the plain weave areas in between each row of staggered flowers, we used a 20/1 bleached linen as the weft.

For the tabby in the overshot portion of the pattern, we used the 40/2 bleached ramie as a tabby thread, thinking it might be smoother than the single ply 20/1 linen used as the tabby between the units of flowers. However, I think that the 20/1 linen would have worked satis-



DRAFTS AND DESIGNS

Published monthly (except July and August)
by Robin & Russ Handweavers, 533 North Adams
St., McMinnville, Oregon.

SUBSCRIPTIONS: \$4.00 per year.
Back issues or single copies, 50¢ each.
Yearly subscriptions start with the September issue. If you subscribe after September, back issues from then on will be mailed to you, unless you specify that you want your subscription to start with the next September issue.

VOLUME 10, Number 1, September, 1967

factorily throughout, or you can use the 40/2 ramie throughout if you so desire. Actually, I think the ramie would be a little more absorbent, and a little softer.

REED USED

A 15 dent reed was used, and it was sleyed 2 ends per dent, or 30 threads per inch.

TREADLING SEQUENCE

Treadle #1, dark green 3 fold cotton
Treadle #7, 40/2 bleached ramie
Treadle #2, dark green 3 fold cotton
Treadle #8, 40/2 bleached ramie
Treadle #3, dark green 3 fold cotton
Treadle #7, 40/2 bleached ramie
Treadle #8, 40/2 bleached ramie
Treadle #1, french rose 3 fold cotton
Treadle #7, 40/2 bleached ramie
Treadle #2, french rose 3 fold cotton
Treadle #8, 40/2 bleached ramie
Treadle #1, french rose 3 fold cotton
Treadle #7, 40/2 bleached ramie
Treadle #8, 40/2 bleached ramie
Treadle #7, 40/2 bleached ramie
Treadle #8, 40/2 bleached ramie
Treadle #7, 40/2 bleached ramie
Treadle #8, 40/2 bleached ramie
Treadle #7, 40/2 bleached ramie
Treadle #8, 40/2 bleached ramie
Treadle #6, dark green 3 fold cotton
Treadle #7, 40/2 bleached ramie
Treadle #5, dark green 3 fold cotton
Treadle #8, 40/2 bleached ramie
Treadle #4, dark green 3 fold cotton
Treadle #7, 40/2 bleached ramie
Treadle #8, 40/2 bleached ramie
Treadle #6, french rose 3 fold cotton
Treadle #7, 40/2 bleached ramie
Treadle #5, french rose 3 fold cotton
Treadle #8, 40/2 bleached ramie

Treadle #6, french rose 3 fold cotton
Treadle #7, 40/2 bleached ramie
Treadle #8, 40/2 bleached ramie
Treadle #7, 40/2 bleached ramie
Treadle #8, 40/2 bleached ramie
Treadle #7, 40/2 bleached ramie
Treadle #8, 40/2 bleached ramie
Treadle #7, 40/2 bleached ramie
Treadle #8, 40/2 bleached ramie
Treadle #7, 40/2 bleached ramie
Treadle #8, 40/2 bleached ramie
END OF ONE COMPLETE PATTERN REPEAT.

Repeat over and over as desired.

COST OF THE THREADS USED:

The 40/2 bleached ramie used for the warp has 6,000 yards per lb., and is priced at a reasonable price of \$4.50 per lb., and is available on 1 lb. cones.

The 20/2 egyptian cotton in the colors used for the flowers and leaves is \$2.75 per 1/2 lb. spool, and it comes in about 100 colors.

If you want to use 20/1 bleached linen as the main tabby instead of 40/2 bleached ramie, it is \$4.90 per 1 lb. cone.

A TOWEL PROJECT

A small guest towel project of this pattern is very effective. The warp is usually set up 13-1/2 to 14" wide. When washed and pressed, it is usually about 12 1/2" wide off the loom after it is woven.

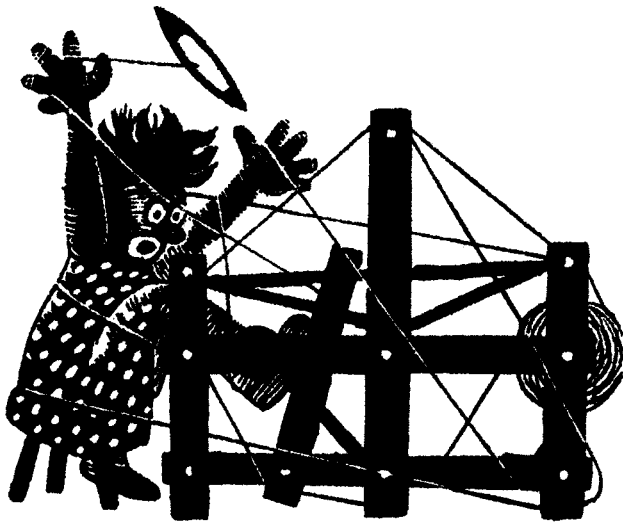
The length of these towels on the loom is usually about 21" long. However, about 3/4" is used for a hem on one end, and on the other, the hem is about 1-1/4". Thus the finished towel length after it is hemmed, washed and pressed is about 17-1/4".

Also, what is effective, is to weave about 1-3/4" plain weave for a hem, and then weave about 1 1/2" of the flowers in the staggered positions, and turn up for the hem almost all of the plain weave only, except for about 1/8", and this gives a solid flower border on the end of the towel, which is very striking in appearance. You could do this on both ends of the towel if you wished.

Also I might mention that if you wish to reverse the leaves on the last end of the towel you weave, you have to reverse the treadling for the leaves, and instead of treadling 6,5,4 for the dark green overshot as you did on the first end, you must treadle 4,5,6 and instead of treadling 1,2,3 you must treadle 3,2,1.

* * * * *

* * *



drafts and designs

a guide for 5 to 12 harness weaves

Volume 10, Number 2, October, 1967

BURGUNDY PLUM

Here is an interesting 7 harness weave of spun silk, designed for a church fabric.

WARP

20/2 SPUN SILK, in Royal Purple, imported from England.

WEFT

20/2 SPUN SILK, in Burgundy Color, imported from England.

REED USED

A 10 dent reed was used, and it was sleyed 4 ends per dent, or 40 threads per inch.

THREADING DRAFT

7	X					X				
6		X					X			
5			X					X		
4				X	X					
3					X					
2							X	X	X	X
1								X	X	X

TIE-UP DRAFT

7		0	0	0	0	0	0		
6									0
5				0			0		
4					0			0	
3				0			0		
2	0		0		0			0	
1		0		0			0		0
	1	2	3	4	5	6	7		



COST OF THE THREADS USED

Both the two colors of 20/2 spun silk are \$9.60 per lb., on tubes of about 2 to 4 oz. each.

COST OF THE FABRIC

On an 8 yard warp, 40" wide, we used 14 oz. of the purple spun silk. Thus the total warp cost was \$8.40, or the cost per yard was \$1.05 for the warp.

In the weft, we used exactly 1 lb. of the wine red silk at a cost of \$9.60.

DRAFTS AND DESIGNS

Published monthly (except July and August) by Robin & Russ Handweavers, 533 N. Adams St., McMinnville, Oregon.

SUBSCRIPTIONS: \$4.00 per year. Back issues or single copies, 50¢ each. Yearly subscriptions start with the September issue. If you subscribe after September, back issues from then on will be mailed to you, unless you specify that you want your subscription to start with the next September issue.

Volume 10, Number 2, October, 1967

We did get approximately 7 yards of fabric from this, so the weft cost per yard was \$1.37 per yard.

WARP COST PER YARD, 40" WIDTH.....	\$1.05
WEFT COST PER YARD.....	1.37
FABRIC COST PER YARD.....	<u>\$2.42</u>

MORE ABOUT THIS FABRIC

You hear so much about ecclesiastical weaving, that I've long wanted to try some of this. With this fine 20/2 spun silk which we found in England, we did some experimenting, and this is the sample which we came up with.

Notice how sheer, and how lightweight this fabric is. This is one of the beautiful things about nice smooth quality silk threads, in that you can have such fine sheer fabrics without heavy weight.

We were thinking of a fabric like this for a cover on an altar, or perhaps a backdrop for an altar. I am not too versed in the use of materials in the churches of the U.S., but I think this is light weight and beautiful quality, and could be used for a robe, etc.

TREADLING SEQUENCE

Treadle #1, one time
Treadle #2, one time
Treadle #3, one time
Treadle #4, one time
Treadle #5, one time
Treadle #6, one time
Treadle #7, one time
Treadle #6, one time
Treadle #5, one time
Treadle #4, one time
Treadle #3, one time
Treadle #2, one time

End of one pattern repeat. Repeat over and over as desired.

MORE ABOUT THIS FABRIC

First of all, this is some of the silk that we imported from England in small lots of a color. We were able to get this price only by taking the close-out lots we could get from one manufacturer. This is a 20/2 spun silk which we have used in both the warp and the weft.

Also, I should tell you that this 20/2 spun silk is measured in a little different measure of yards per lb., than we think of in a 20/2 cotton. In England, a 20/2 spun silk has 20 times 840 or 16,800 yards per lb. They ignore the ply number. Thus a 20/4 or a 20/8 silk would also have the same number of yards per lb. as does this 20/2 spun silk, 16,800 yards per lb.

I might mention that we have this spun silk in purple, blue, red, gray, burgundy, brown, lavender and red rust.

We have arranged with this manufacturer to gradually send us occasional small lots of various colors as they are available.

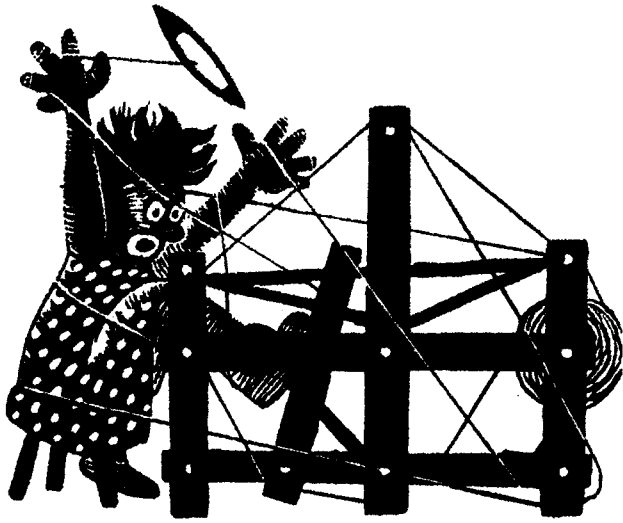
On this fabric, we had a cotton selvage of 8 threads of 50/3 cotton on each selvage edge. We did an 8 yard warp, 40" wide, and it wove down to about 38" width on the loom.

We were particularly amazed at the low cost of this fabric in view of the fact that the 20/2 spun silk is \$9.60 per lb.

You use a medium even beat, or you can beat lightly, change to the next shed, and beat lightly again.

YARN SPECIALS FOR OCTOBER, 1967

1. 45/3 Bleached White Linen, imported from Barbour's in Ireland. A special on approximately 1 lb. cones at \$3.20 per lb. This has 4,500 yards per lb.
2. 50% CASHMERE & 50% SILK IN A 4 PLY YARN for Warp or Weft. This yarn is available in Natural and 6 colors. Natural is \$4.80 per lb., and the Colors are \$6.00 per lb.
3. 50/3 Bleached White Linen, also it is imported from Ireland. An exceptionally good buy at \$3.20 per lb. Is is on approx. 1 lb. cones, 5000 yds a lb.



drafts and designs

a guide for 5 to 12 harness weaves

Volume 10, Number 3, November, 1967

ONE, TWO, THREE TWILL IN 8 HARNESSSES

An interesting all silk fabric which incorporates 3 threads in the warp and one thread in the weft.

WARP THREADS

The warp threads are three weights of the glossy spun silk we imported from England. It is in 3 sizes, 20/2, 10/2 and 5/2.

WEFT THREAD

The weft thread is a 7/2 spun silk, which we had found a small lot of here in the U. S. This is some that we sent out and had plied in order to get this weight thread. Also, please note that there were 3 ends of the 7/2 spun silk all wound together to act as one thread.

REED USED

A 12 dent reed was used with a special sleying of the reed, according to the weight of the warp threads. The 20/2 spun silk was threaded 4 per dent. The 10/2 spun silk was threaded 4 per dent. The 5/2 spun silk was threaded 2 per dent.

THREADING DRAFT

8	XXX		OO		A
7		XXX		OO	A
6			XXX		OO
5				XXX	OO
4					XXX
3					
2					
1					



KEY TO THREADS IN THE WARP

X - 20/2 spun silk, 16,800 yds. lb.
O - 10/2 spun silk, 8,400 yds. lb.
A - 5/2 spun silk, 4,200 yds. lb.

TREADLING SEQUENCE USED

Our treadling sequence that we used was one of four different treadlings that we experimented with. We will give you the treadling for this sample, and also give you the other three treadlings we used.

DRAFTS AND DESIGNS

Published monthly (except July and August) by Robin & Russ Handweavers, 533 N. Adams St., McMinnville, Oregon.

SUBSCRIPTIONS: \$4.00 per year. Back issues or single copies, 50¢ each. Yearly subscriptions start with the September issue. If you subscribe after September, back issues from then on will be mailed to you, unless you specify that you want your subscription to start with the next September issue.

VOLUME 10, Number 3, November, 1967

TREADLING IN THIS SAMPLE WAS:

1,2,3,2,3,4,3,4,5,4,5,6,5,6,7,6,7,8,7,8,1,8,1,2. End of one pattern repeat. Repeat over and over as desired.

Here are some alternate treadlings that you might try.

- A. 1,2,3,4,5,6,7,8, over and over.
- B. 1,2,3,2,1,10,9,10,4,5,6,5,4,10,9,10.
- C. 1,2,3,4,5,6,5,4,3,2,1,8,7,6,5,6,7,8,1,2,3,4,5,6,5,4,3,2,1,10,9,10.

Also, I'm sure that many, many other different treadlings could be worked out on this particular set-up. Some of them could be quite unusual effects.

TIE-UP DRAFT:

8	0	0	0		0				0	
7	0		0		0	0				0
6	0	0			0		0		0	
5				0		0	0	0		0
4	0	0	0		0				0	
3		0		0			0	0		0
2			0	0		0		0	0	
1				0		0	0	0		0
	1	2	3	4	5	6	7	8	9	10
									A	B

COST OF THREADS USED IN THIS FABRIC

The 3 threads, the 20/2, 10/2 and 5/2 spun silk all sell for \$1.00 per oz. These come on tubes varying in weight from about 3 to 5 oz. each.

The 7/2 spun silk used in the weft is \$7.00 per lb. There is a limited amount of this available. The price again is \$7.00 per lb.

COST OF THIS FABRIC

The total warp cost of a 8-1/2 yard warp, 40" wide, was \$27.50. The warp cost per yard was \$3.24.

We had 7 1/2 yards of finished fabric and the total weft thread cost was \$20.12. The cost per yard for the weft thread comes to \$2.70.

(Cont.)

WARP COST PER YARD.....\$3.24
WEFT COST PER YARD..... 2.70
FABRIC COST PER YARD.....\$5.94

HIGH PRICE OF SILK IS DRIVING SILK OUT OF U. S. MARKET

This is a summary of an article that recently appeared in the New York Times newspaper.

The gist of the whole article is that silk cannot be mass-produced or machine produced.

Silk is the fine thread spun by the silkworm as it makes its cocoon. Silkworm farming, much of it is done in Japan, and it is a tedious, difficult and underpaid job.

Cultivated silkworms have to have controlled temperatures and food and protection from disturbances, such as loud noises, strong smells, etc. Such distractions tend to make the silkworm hysterical and such distractions spoil the thread they spin.

Silk, in Japan, is a luxury item and is very popular with all Japanese, and as a result, we cannot import much silk from Japan. Japan is now using all of its own production and is also importing about three million pounds a year from China, Italy and Korea; and this is also being used in Japan.

One asks why, since the price is so high, we bother with it. The answer is that it not only creates fabrics of great beauty and luxury, but it is one of the strongest fibers known to the world, is resilient, absorbent, and has never been known to irritate the most sensitive skin.

The question is then asked as to how it can be saved as a thread or fabric for use of consumers in the U.S. The main answer to this so far, is that it can be combined with acetate yarns to make rich fabrics, and to import some of its wonderful characteristics to the resulting fabric.

Now for some comments. I know that almost all silk spinning in the U.S. has been eliminated or discontinued in the past 8 to 10 years. There are one or two small companies with some processing, but about 90% of the silk production has been discontinued in the past few years. When in England, I looked all over for silks and found only a few. However, the price was so high that even I hesitated to purchase it, but did manage to get some, as you can see from our samples from time to time.



drafts and designs

a guide for 5 to 12 harness weaves

Volume 10, Number 4 - December, 1967

A SWISS SPECIAL

All of the threads used in our sample for this month are linens imported from Switzerland, so thus the name.

WARP: There are two threads used in the warp. They are:

- X - 2-1/2 lea, bleached slub linen
- O - 6/4 natural linen warp

WEFT: There are two threads used in the weft. They are:

1. 2 1/2 lea, bleached slub linen
2. 2 1/2 lea, natural slub linen

REED USED

A 10 dent reed was used, and it was single sleyed. I thought a 5 dent reed would be better, but was pleasantly surprised when there was absolutely no trouble using the 10 dent reed.

THREADING DRAFT

8				0						
7			0		0					
6	0		0			0		0		0
5		0					0			
4							X		X	
3								X		
2							X			X
1				X	X			X		X



TIE-UP DRAFT

8	0		0		0	0				0	
7		0		0	0	0					0
6	0		0				0	0	0		
5		0		0			0	0			0
4	0	0				0		0	0		
3	0	0			0		0				0
2			0	0	0		0	0	0		
1			0	0	0	0		0			0
	1	2	3	4	5	6	7	8	A	B	

DRAFTS AND DESIGNS

Published monthly (except July and August) by Robin & Russ Handweavers, 533 N. Adams St., McMinnville, Oregon.

SUBSCRIPTIONS: \$4.00 per year. Back issues or single copies, 50¢ each. Yearly subscriptions start with the September issue. If you subscribe after September, back issues from then on will be mailed to you, unless you specify that you want your subscription to start with the next September issue.

VOLUME 10, Number 4, December, 1967

KEY TO THREADS IN THREADING DRAFT

- X - 2½ lea bleached slub linen
- O - 6/4 natural grey linen warp

TREADLING SEQUENCE

- Treadle # 1 - grey slub linen
- Treadle # 2 - grey slub linen
- Treadle # 1 - grey slub linen
- Treadle # 4 - grey slub linen
- Treadle # 3 - grey slub linen
- Treadle # 4 - grey slub linen
- Treadle # 1 - grey slub linen
- Treadle # 2 - grey slub linen
- Treadle # 1 - grey slub linen
- Treadle # 7 - bleached slub linen
- Treadle # 8 - bleached slub linen
- Treadle # 7 - bleached slub linen
- Treadle # 6 - bleached slub linen
- Treadle # 5 - bleached slub linen
- Treadle # 6 - bleached slub linen
- Treadle # 7 - bleached slub linen
- Treadle # 8 - bleached slub linen
- Treadle # 7 - bleached slub linen

END OF ONE COMPLETE PATTERN REPEAT.

Repeat over and over as desired.

COST OF THREADS USED IN THIS SAMPLE

The 2½ lea linen in the natural and bleached white are both \$3.20 per lb. It comes on tubes of about 1 lb. to 1 lb. 3 oz. each. This linen has 750 yards per lb.

The 6/4 linen is one that I purchased as usable for a rug warp, and I have used it for several different things. It has 450 yards per lb., and comes on tubes of about 1 lb. 2 oz. each. Price is \$3.20 per lb.

COST OF THE FABRIC

We had an 8 yard warp, 40" wide, plus 16 selvage threads. In the warp, we used 4 lbs. 2 oz. of the 6/4 linen, and 2 lbs. 10 oz. of the bleached white slub linen. The total warp cost for the 8 yard warp was \$21.60 or the cost per yard was \$2.70.

The weft thread for 7 yards of warp was \$12.90 or the cost per yard comes to \$1.84 per yard.

WARP COST PER YARD.....\$ 2.70
 WEFT COST PER YARD.....\$ 1.84
 FABRIC COST PER YARD.....\$ 4.54

MORE ABOUT THIS FABRIC:

I discovered something interesting about the 2½ lea slubby linen. I tried using the natural for warp along with the white, but found that the natural fuzzed so much that I changed and used the 6/4 smooth linen for warp. The bleached white slubby is the same linen as the natural, but because of the bleaching, it seems less fuzzy, and can be used for warp.

This fabric is easy to weave, went quite fast because of the size of the threads.

We did use a double beat, beating first with the shed open, and changing to the next shed and beating again before throwing the shuttle. Not only does this help clear the shed, but it makes a firmer and more durable fabric.

I'm going to suggest that this type of material would make heavy, durable drapes. However, I can see this pattern used in fine weight threads for dress material, and I can see it used with heavy, smooth wool yarns, and with the heavier wool yarns of all kinds for afghans.

The pattern is an 8 harness huck variation.

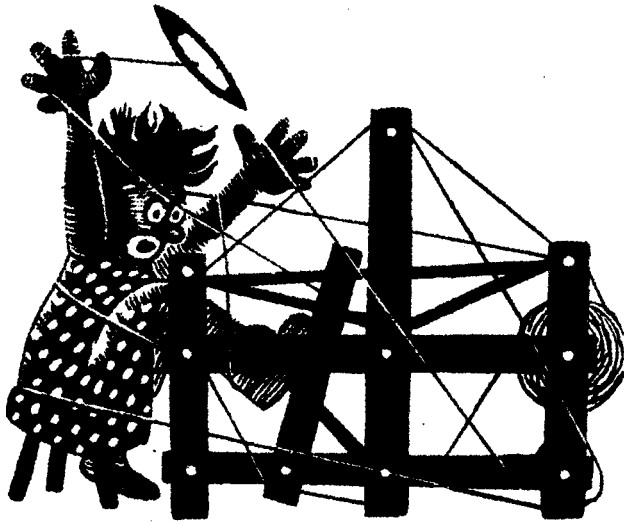
Also, notice the difference on one side from the other. It is quite marked, and much less of one of the colors shows on one side than on the other.

For our selvage, we threaded 8 threads of the 6/4 linen on each edge. We tried this selvage threading and it seemed to work quite well. Thread 8,7,2,1,6,5,4,3.

This pattern I can see has tremendous possibilities. For instance you could use a heavy brushed yarn as one of your two threads in the warp, and the same in the weft, and get a sculptured or dimensional effect.

I would like to try this in afghans, or knee robes, and I have seen it in the fine threads for dress material, and have liked it very much.

* * * * *



drafts and designs

a guide for 5 to 12 harness weaves

Volume 10, Number 5, January, 1968

LINEN MESH

A very fine or sheer linen fabric in a 6 harness weave that is easy to do. Ramie and Linen are the two threads used in the warp and weft.

WARP THREADS USED

We used an 50/3 Natural Irish Linen made by Barbour Linen Company as the main warp thread. The antique gold color ramie is size 20/2, and it has 3000 yards per lb. The 18/2 natural grey Irish linen is also spun by Barbour's and is used in the warp.

WEFT THREADS USED

The same three threads that are used in the warp are also used in the weft.

REED USED

A 15 dent reed was used with a special sleying of the reed. We had three threads in one dent; skipped one dent, three threads in the 3rd dent, skipped a dent, etc., for the full width of the fabric. Actually, it comes to about 22½ threads per inch in the fabric in the warp.

THREADING DRAFT

6				X			X			X			X			X		
5		A	A		X	X		X	X		X	X		X	X		X	X
4	0	0		0	0		X	X		X	X		X	X		X	X	
3							X			X			X			X		
2	0			0														
1		A																



KEY TO THREADS IN THREADING DRAFT

- X - 50/3 Natural Irish Linen
- O - 20/2 Antique Gold Merc. Ramie
- A - 18/2 Natural Grey Irish Linen

DRAFTS AND DESIGNS

Published monthly (except July and August) by Robin & Russ Handweavers, 533 N. Adams St., McMinnville, Oregon.

SUBSCRIPTIONS: \$4.00 per year. Back issues or single copies, 50¢ each. Yearly subscriptions start with the September issue. If you subscribe after September, back issues from then on will be mailed to you, unless you specify that you want your subscription to start with the next September issue.

VOLUME 10, Number 5 January, 1968

TIE-UP DRAFT

6		0		0		0
5	0		0			0
4		0		0	0	
3	0		0		0	
2			0	0	0	
1		0				0
	1	2	3	4	5	6

TREADLING SEQUENCE

- A. 1. Treadle #1, 50/3 natural linen
2. Treadle #2, 50/3 natural linen
3. Treadle #1, 50/3 natural linen
4. Treadle #3, 50/3 natural linen
5. Treadle #4, 50/3 natural linen
6. Treadle #3, 50/3 natural linen

Repeat these first 6 threads five times until you have 30 threads. Then to balance this unit you treadle:

1. Treadle #1, 50/3 natural linen
2. Treadle #2, 50/3 natural linen
3. Treadle #1, 50/3 natural linen

Thus you have 33 threads of 50/3 natural linen before you use the 20/2 and 18/2 ramie and linen. Then you treadle these next 9 threads to come to the end of one pattern repeat.

1. Treadle #3, 20/2 Ramie, Antique
2. Treadle #5, 20/2 Ramie, Antique
3. Treadle #3, 20/2 Ramie, Antique
4. Treadle #2, 18/2 Linen, Nat. Gray
5. Treadle #6, 18/2 Linen, Nat. Gray
6. Treadle #2, 18/2 Linen, Nat. Gray
7. Treadle #3, 20/2 Ramie, Antique
8. Treadle #5, 20/2 Ramie, Antique
9. Treadle #3, 20/2 Ramie, Antique

End of one complete pattern repeat. There are 42 threads in each pattern repeat. You repeat this unit over and over as desired.

MORE ABOUT THIS FABRIC

First of all, we must tell you that we used an unusual selvage, so that the edge

would weave in satisfactorily. We used a 6 thread selvage and threaded it 3,5,3,2, 6,2. These selvage threads were threaded 3 in one dent, skip one dent, and three in the next dent.

You use a light to medium even beat. This fabric is easy to weave, and you can even use a light beat, change to the next shed, and use another light beat before throwing the shuttle again. You know that you get in such a habit of using a double beat as suggested above that it is sometimes hard to change.

I wish that you could see the whole piece of this fabric. It makes a light weight, sheer material for drapes, and I think that this type of material in a solid color or natural and white combination, would make excellent material for a stitchery background. It is easy and pleasant to weave.

COST OF THE THREADS USED

We are particularly pleased at the cost of the threads used in the fabric and particularly the 50/3 Irish Linen in the Natural color. It is \$3.20 per lb., has 5,000 yards per lb., and the minimum order is 1 lb.

The 20/2 Antique Gold Mercerized Ramie has 3,000 yards per lb., and is \$5.00 per lb. I understand that the next time we order this that it has gone up in price, but luckily we have just received 100 lbs. of this color.

The 18/2 natural grey linen is another linen imported from Ireland. It comes on 1 lb. tubes, is \$4.00 per lb., and it has 2,700 yards per lb.

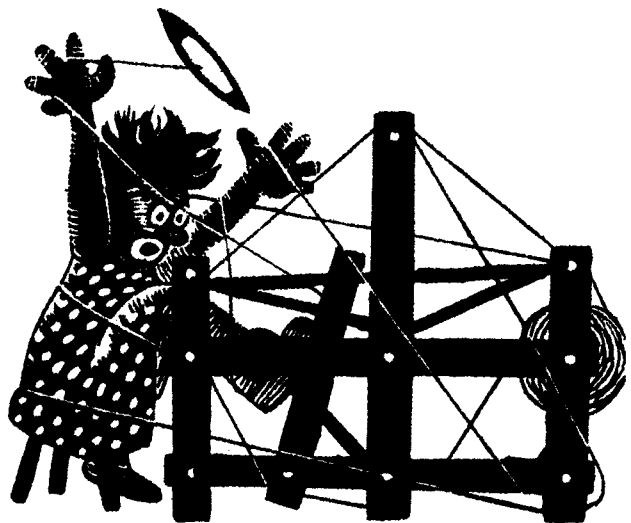
COST OF THE FABRIC

We had the warp on the loom 8 yards in length and 42" wide. It took just 1 lb. 4 oz. of the 50/3 natural linen, 3 1/2 oz. of the 18/2 natural grey linen, and 6 oz. of the gold ramie for the warp. Thus, the total warp cost was just 85¢ per yard.

We had 7 yards of finished fabric from this 8 yard warp. As weft, it took 1 lb. 3 oz. of the 50/3 linen for weft, 3 1/2 oz. of the 18/2 natural gray linen, and 5 1/2 oz. of the 20/2 mercerized ramie. Thus, the total weft cost for 7 yards of fabric was \$6.40 or a cost of 92¢ per yard.

WARP COST PER YARD...42" wide...85¢
WEFT COST PER YARD.....92¢

FABRIC COST PER YARD.....\$1.77



drafts and designs

a guide for 5 to 12 harness weaves

Volume 10, Number 6, February, 1968

STRIPES AND DIAMONDS

This is an 8 harness point twill which features the cashmere and silk combination yarn as both warp and weft.

STRIPED PLAN FOR THREADING WARP STRIPES

1. Thread A to B - one time
2. Thread B to C - one time
3. Thread C to D - one time
4. Thread B to C - one time

Repeat this threading over and over so you will have 28 threads of GREENGRAE, 28 threads of GLAD GREEN, 28 threads of BRITISH BLUE, 28 threads of GLAD GREEN. These 4 units of 28 threads of each color are repeated over and over.

WARP

Our warp thread was the 4 ply cashmere and silk combination in three different colors.

- X - dark green is called GREENGRAE
- O - light green is called GLAD GREEN
- B - blue color is called BRITISH BLUE

WEFT

As a weft thread, we used the 4 ply bleached white cashmere and silk thread as the only weft thread.

THREADING DRAFT

	D			C				B			A
8	B		B		O		O		X		X
7	B		B B		B		O O		O X		X X
6	B		B B		B		O O		O X		X X
5	B		B B		B		O O		O X		X X
4	B		B B		B		O O		O X		X X
3	B		B B		B		O O		O X		X X
2	B		B B		B		O O		O X		X X
1	B		B				O		X		X



REED USED

A 10 dent reed was used, and it was double sleyed, 2 ends per dent, or 20 threads per inch.

DRAFTS AND DESIGNS

Published monthly (except July and August) by Robin & Russ Handweavers, 533 N. Adams St., McMinnville, Oregon.

SUBSCRIPTIONS: \$4.00 per year. Back issues or single copies, 50¢ each. Yearly subscriptions start with the September issue. If you subscribe after September, back issues from then on will be mailed to you, unless you specify that you want your subscription to start with the next September issue.

VOLUME 10, Number 6, February, 1968

TIE-UP DRAFT

8		X	X			X		X	
7		X	X	X			X		X
6			X	X	X			X	
5	X			X	X	X			X
4		X			X	X	X	X	
3	X		X			X	X		X
2		X		X			X	X	
1	X		X		X				X
	1	2	3	4	5	6	7	8	9

COST OF THE CASHMERE & SILK THREADS

There are 6 colors available in this cashmere and silk combination thread. The price for all of these is \$6.00 per lb., and it comes on cones of about 1 lb. 2 to 4 oz. each.

COST OF THE FABRIC

We put a 10 yard warp, 42" wide on the loom, and after having the fabric off the loom for about a day, we measured it and had 8½ yards of finished fabric.

This took 3½ lbs. of the warp threads for the warp or a total warp cost of \$21.00 or \$2.10 per yard.

In the 8½ yards of weft, we used 3 lbs. of the WINTER WHITE cashmere and silk. Thus the weft cost was \$18.00 for 8½ yards or \$2.12 per yard.

WARP COST PER YARD.....\$ 2.10

WEFT COST PER YARD..... 2.12

FABRIC COST PER YARD, 41" WIDE \$ 4.22

TREADLING SEQUENCE

In the treadling sequence given below, each number represents one shot of the winter white cashmere and silk weft thread. Treadle as follows:

1,2,3,4,5,6,5,4,3,2,1,2,3,4,5,6,5,3,3,2,1,8,9,8. Repeat this sequence over and over again.

MORE ABOUT THIS FABRIC

First of all, the thread used here is 50% cashmere and 50% silk. It came to us as a single ply fine thread, which most weavers do not want to cope with, so we sent it out and had it 4 plied, and dyed, and you can see the results.

I personally thought that there would be some clinging in the warp with this thread, but was very pleasantly surprised to find that this thread presented no problems in use at all. If you will notice, these threads have a sort of two-tone effect, and this is because the cashmere accepts the dyes one way and the silk accepts it slightly differently. I was most intrigued with a sample a customer made of this. She used a medium dark blue warp of 2/18's or 2/20's, and then used the greengrae color as weft. This was most pleasing and she told us that it made up into a beautiful dress.

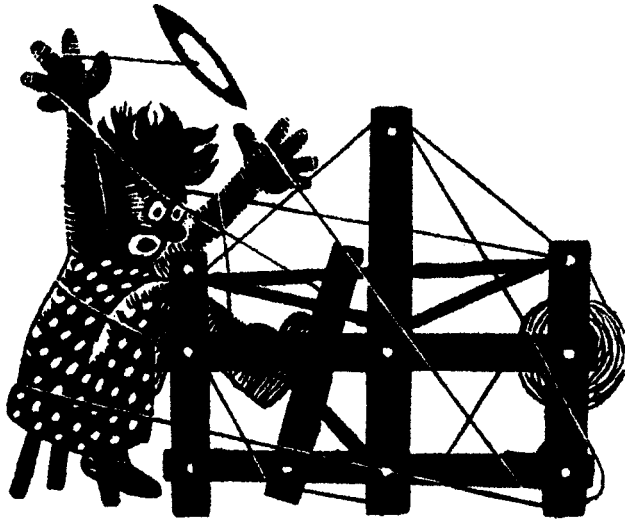
Our sample is washed and pressed, and should present no problems in this department. I would suggest you wash before making up in ivory or lux in lukewarm water, allow to drip dry and then press it. After being made up, I think it could be either dry-cleaned, or washed in the same manner as described above.

You want to use a medium firm beat, or as we did, a light double beat, beating lightly after throwing the shuttle, and then changing the shed and beating lightly again before throwing the shuttle again.

One more thing that I must mention is that I saw this same fine, single ply combination thread of cashmere and silk being spun in one of the silk mills in England this past summer. I was most intrigued and checked, and found that it was selling at the same price of most of the comparable fine silks, at \$14.00 per lb. Therefore, the 600 lbs. that we purchased and had plied and dyed is I feel, an extremely good buy in yarns.

COTTON LACE: Is once again available in 16 colors. It has approximately 1900 yards per lb., comes on 1/2 lb. tubes, and is \$2.50 per 1/2 lb. tube. Excellent for a sort of terry cloth effect in guest towels. Good for mats, for knitting, etc. Postage extra. ROBIN & RUSS HANDWEAVERS, 533 N. Adams St., McMinnville, Ore. 97128

HEAVY LINEN AND RAYON FLAKE YARN. This is a natural grey linen wrapped around different colored flake rayons. It has about 900 yards per lb., and is now available in 10 colors. Available on 4 oz. tubes, 225 yards per tube. Price is \$4.00 per lb., or \$1.00 per 4 oz. tube. Robin & Russ, 533 N. Adams St., McMinnville, Oregon 97128



drafts and designs

a guide for 5 to 12 harness weaves

Volume 10, Number 7 - March, 1968

RED AND WHITE, A TWO BLOCK DAMASK

The sample this month is a 10 harness, 2 block, damask weave, for use in table-linens, drapes, etc.

WARP

The warp thread is the 50/3 bleached Barbour Linen, imported from Ireland.

WEFT

The weft in this case was a 16/1 Ramie, in the SCARLET RED COLOR. This is imported from Switzerland.

REED USED

An 8 dent reed was used, and it was sleyed five (5) ends per dent, or 40 threads per inch.

THREADING PLAN FOR TABLE CLOTH, 42-1/4" WIDE

1. Thread as follows:

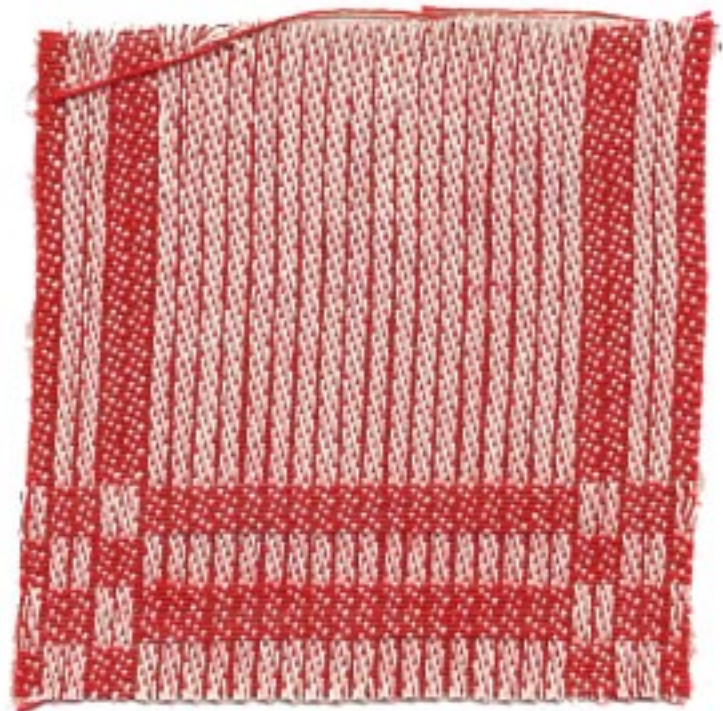
A to B.....one time.....30 thds.
 B to D.....eleven times...1540 thds.
 B to C.....one time.....90 thds.
 A to B.....one time.....30 thds.

For 42-1/4" width, you have...1690 thds.

TREADLING SEQUENCE

1. Treadle 1,2,3,4,5 - 18 times - 90 thds.
2. Treadle 6,7,8,9,10 - 2 times - 10 thds.
3. Treadle 1,2,3,4,5 - 2 times - 10 thds.
4. Treadle 6,7,8,9,10 - 2 times - 10 thds.
5. Treadle 1,2,3,4,5 - 2 times - 10 thds.
6. Treadle 6,7,8,9,10 - 2 times - 10 thds.

THERE ARE 140 threads in one complete pattern repeat. Repeat over and over as desired.



TIE-UP DRAFT

10	X	X	X		X		X			
9		X	X	X	X					X
8	X	X		X	X			X		
7	X	X	X	X		X				
6	X		X	X	X				X	
5		X				X	X	X		X
4					X		X	X	X	X
3			X			X	X		X	X
2	X					X	X	X	X	
1				X		X		X	X	X
	1	2	3	4	5	6	7	8	9	10

DRAFTS AND DESIGNS

Published monthly (except July and August) by Robin & Russ Handweavers, 533 N. Adams St., McMinnville, Oregon.

SUBSCRIPTIONS: \$4.00 per year. Back issues or single copies, 50¢ each. Yearly subscriptions start with the September issue. If you subscribe after September, back issues from then on will be mailed to you, unless you specify that you want your subscription to start with the next September issue.

VOLUME 10, Number 7 - March, 1968

COST OF THE FABRIC....We had an 8 yd. warp, 42" wide, and it took 2 lbs.12 oz. for this warp. Thus the warp cost was \$8.80 so the warp cost per yd. was \$1.10 per yd. In the weft, we received 7 yds. of fabric from the 8 yd. warp. Could have squeezed out almost 1/2 yd. more, but we didn't. It took about 3 lbs. of the 16/1 ramie in the weft, so the weft cost was \$15.00. The cost per yd. was \$2.15 per yd. for the weft.

WARP COST PER YARD.....\$1.10
WEFT COST PER YARD..... 2.15
FABRIC COST PER YARD \$3.25

THREADING DRAFT:

	B												A		
10														X	X
9														X	X
8														X	X
7														X	X
6														X	X
5	X	X	X	X	X	X	X	X	X	X	X	X	X		
4	X	X	X	X	X	X	X	X	X	X	X	X	X		
3	X	X	X	X	X	X	X	X	X	X	X	X	X		
2	X	X	X	X	X	X	X	X	X	X	X	X	X		
1	X	X	X	X	X	X	X	X	X	X	X	X	X		

D	C														
10	X	X			X	X			X	X					
9	X	X			X	X			X	X					
8	X	X			X	X			X	X					
7	X	X			X	X			X	X					
6	X	X			X	X			X	X					
5			X	X				X	X			X	X	X	X
4			X	X				X	X			X	X	X	X
3			X	X				X	X			X	X	X	X
2			X	X				X	X			X	X	X	X
1			X	X				X	X			X	X	X	X

COST OF THE THREADS USED:

The 50/3 bleached linen is an Irish Linen which we got an exceptionally good buy on. The company in Ireland told us about a stock they had in a warehouse here in the U.S. and offered us 1,000 lbs. at a very low price, so we purchased it and are able to sell it at \$3.20 per lb. We have this in 50/3 in natural and bleached, and in 45/3 in natural and bleached, all at \$3.20 per lb. The 50/3 has 5,000 yards per lb., and the 45/3 has 4,500 yards per lb.

The 16/1 Ramie comes in 16 colors, and while we normally do not stock it in this size, we can get it in about 6 weeks delivery from Switzerland, and it is \$5.00 per lb. The colors are sold to us as wash-fast and sun-fast.

MORE ABOUT THE PATTERN:

One thing that is most interesting to me about this is the fact that we have 5 threads in one dent in the reed. In the sample here, you can notice that this causes a sort of rib effect. However, when you wash and press this several times, this rib effect will almost entirely disappear.

On this type of fabric, you always want to use a firm, even, double beat. This is true of most linen fabrics. It is particularly true of most damasks as you want it as firm and tight as possible.

Be sure to beat with the shed open, change to the next shed, beat again, and then throw the shuttle, and continue in this manner.



drafts and designs

a guide for 5 to 12 harness weaves

VOLUME 10, NUMBER 8, APRIL, 1968

A BIT OF SWITZERLAND

The sample this month is a hand-woven fabric that we purchased in Switzerland last summer, when we saw it being woven in one of the hand-weaving shops in Zaziwil.

WARP THREAD USED

The warp thread in this fabric is a 16/2 natural, unmercerized cotton.

WEFT THREAD USED

The weft thread is the 16/2 Bleached Ramie, which we import from Switzerland. It has 2400 yards per lb., and comes on approximately 1 lb. tubes, and is \$5.00 per lb. Also available on 4 oz. tubes of 600 yards each, at \$1.25 per 4 oz. tube.

REED USED

A 15 dent reed was used, and it was double sleyed, 2 ends per dent, or 30 threads per inch.

TIE-UP DRAFT

8	X			X			X	X		X
7			X			X	X	X	X	
6		X			X	X	X			X
5	X			X	X	X				X
4			X	X	X			X		X
3		X	X	X			X			X
2	X	X	X			X				X
1	X	X			X			X	X	
	1	2	3	4	5	6	7	8	9	10
									A	B

TREADLING SEQUENCE

The treadling sequence is quite simple, but is rather long, and we will give it in a simple progression, with each number that we give representing one pick or shot of the shuttle on that particular treadle.

Treadle: 1,2,3,4,5,6,7,8,5,6,7,6,7,8,
1,2,3,4,5,6,7,8,7,6,5,4,3,2,
1,4,3,2,3,2,1,8,7,6,5,4,3,2.

There are 42 shots or picks in one complete pattern repeat.



DRAFTS AND DESIGNS

Published monthly (except July and August) by Robin & Russ Handweavers, 533 N. Adams St., McMinnville, Oregon.

SUBSCRIPTIONS: \$4.00 per year. Back issues or single copies, 50¢ each. Yearly subscriptions start with the September issue. If you subscribe after September, back issues from then on will be mailed to you, unless you specify that you want your subscription to start with the next September issue.

VOLUME 10, NUMBER 8 - APRIL, 1968

THREADING DRAFT:

8	X				X				X			X
7		X				X			X	X		X X
6			X				X		X	X	X	X
5		X				X			X		X	X
4			X		X		X		X			X
3			X		X	X		X				X
2			X	X		X	X		X			X
1			X		X			X				X

ABOUT THE SOURCE OF THIS SAMPLE

I'm sure that most of you will realize that this is just an extended point twill variation, but this is the type of weave that seems to be very popular in Switzerland.

We had a chance, when in Switzerland last summer, to visit one of the Mountain weaving centers in Zaziwill, Switzerland. This is a town about 40 or 50 miles south of Bern, Switzerland, one of the old, beautiful towns of Switzerland. On the way to Zaziwil, we were informed that many of the houses in the area were built from 1500 to 1700, and that if they did build a new house anywhere in the area today, that it would conform with those that were built in the 1500's to 1700's.

The weaving shop in Zaziwil was operated by a woman who had a shop or display room in the downtown area, and then in her home, much of the weaving was done.

We were invited to visit her home, and it was a nice home overlooking the town. This was a three story house, and each room of the house had one or two looms in the various rooms. There were many different kinds of looms, and in particular, there were 4, 8 and 12 harness fly shuttle looms, and also the regular Swedish type loom with overhead beater, without the fly-shuttle attachment. In this home, there were probably about 8 to 10 looms in all.

(continued)

The owner told us that she hired the neighbors to weave for her, and that in the winter, almost all of the looms would be busy, but in the summer, not so much weaving was done....

We went up into the work-room, where her finished garments were made from the hand-woven fabrics. It was here that I saw them tailoring suits, dresses, shirts, skirts, and other items to order, and also, she had other fabrics being made for sale in her shop.

Not only did they use cotton and ramie, as you see in this sample, but they had many skirts, and suits, and tailored

dresses made of wool. I was particularly impressed by the clever designs that were being made here.

I asked what this particular fabric was used for, and found that it had many uses. They showed us a dress made of this fabric and also we saw towels, mattress covers, bed-spreads, etc.

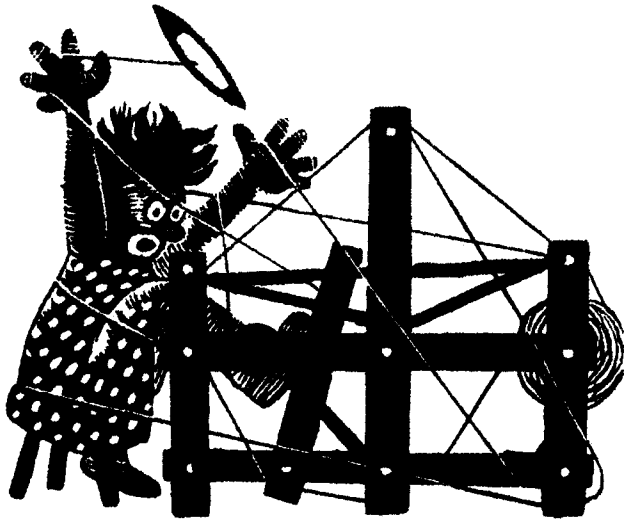
This fabric is sold by the meter (a little over 39" in length) and it was about 55" wide. I purchased this and another similar piece for samples in Drafts and Designs, and also some of their clever aprons which had drawn work in the pockets and bib part of the apron, and a small wall hanging.

This fabric cost us in Switzerland, about \$5.00 per yard for the 55" width, and here in the U.S., it would cost us perhaps \$3.50 to \$4.00 per yard to weave it. The main problem though, is when you do import yardage like this, that the duty is 38%, so this raises it up to about \$7.00 per yard, plus postage.

A PRICE INCREASE IN DRAFTS AND DESIGNS:

For 10 years, we have held the price of Drafts and Designs to \$4.00 per year, but we find that starting with the 11th year of publication, the September issue of 1968, that we will raise the price to \$5.00 per year's subscription. Single, individual copies will be 50¢ each plus 6¢ postage.

THIS WILL ALLOW ALL OF YOU WHO DO SUBSCRIBE NOW, TO RENEW FOR THE NEXT YEAR OR TWO, BEFORE SEPTEMBER 1, 1968, AT THE OLD PRICE OF \$4.00 per year.



drafts and designs

a guide for 5 to 12 harness weaves

VOLUME 10, NUMBER 9 MAY, 1968

PURPLE DIADEM:

This seven harness weave was designed for a church fabric, to be used as a hanging behind the altar, or for use as robes and other such materials.

WARP:

The warp is a size 20/2 spun silk imported from England in a color called "Diadem". It is really a light lavender color.

WEFT:

The weft is also a size 20/2 spun silk in a Royal Purple color, which is imported from England. (Please note that a 20/2 spun silk as this one is two times as fine as a 20/2 cotton. In England the system of measuring the yardage of a spun silk is to ignore the ply figure, and to base the yardage on a cotton count times the first number. Thus this spun silk has 20 x 840, or 16,800 yards per lb.

REED USED:

A 12 dent reed was used, and it was triple sleyed, 3 ends per dent, or 36 threads per inch.

THREADING DRAFT:

7	X			X			X			X
6		X		X			X			X
5		X		X			X			X
4			X	X			X		X	
3			X				X			
2				X	X	X	X		X	X
1				X	X	X			X	X



DRAFTS AND DESIGNS

Published monthly (except July and August) by Robin & Russ Handweavers, 533 N. Adams St., McMinnville, Oregon.

SUBSCRIPTIONS: \$4.00 per year. Back issues or single copies, 50¢ each. Yearly subscriptions start with the September issue. If you subscribe after September, back issues from then on will be mailed to you, unless you specify that you want your subscription to start with the next September issue.

VOLUME 10, NUMBER 9. MAY, 1968

TIE-UP DRAFT:

7	0	0	0		0	0			0		
6	0	0		0	0					0	
5	0		0	0					0		
4		0	0		0	0	0	0		0	
3	0	0			0	0	0		0		
2	0				0	0		0		0	
1					0		0	0	0		
	1	2	3	4	5	6	7	8	9	10	
							A	B			

NOTE: #9 and #10 or A & B are the plain weave or tabby treadles. The treadles 1 to 8 are the pattern treadles.

TREADLING SEQUENCE:

There are 24 shots in one complete pattern repeat, and it is quite a simple treadling.

Treadle 1,2,3,4 - 3 times or 12 thds.
Treadle 5,6,7,8 - 3 times or 12 thds.

This is one complete pattern repeat and you do repeat over and over as desired.

COST OF THE THREAD USED IN THIS SAMPLE

The 20/2 spun silk (which has 16,800 yards per lb.) is \$9.60 per lb. It comes on tubes of about 2 to 4 oz. each. We have this same silk available in about 8 colors. It is available in a light and dark royal blue, in a wine red, in a brick red, in steel gray, in a dark forest green, a medium brown and one or two other colors. We also have a similar silk imported from Switzerland in a natural white, lavender, two shades of green, a gray and a brown. Both of these silks are \$9.60 per lb., and to duplicate them direct from the manufacturer in England and Switzerland would cost at wholesale prices, \$14.00 per lb., plus shipping and import duty.

When I finally visited these silk companies last summer, I was able to talk them into selling a few odd lots at a reduced price, and this is the only reason why we were able

to have them at this price. As we wrote in Drafts & Designs earlier, spun silk has just about priced itself off the market, because of the labor involved in the production of it.

MORE ABOUT THE FABRIC:

The first thing that we noticed about this fabric is the slowness in the weaving. The reason for this of course, is the fact that because of the construction of the weave, about 55 weft shots are enough to do about one inch of fabric. Thus, you can see that it would take a long time to weave, as compared with something of 10 to 20 threads per inch. Most ecclesiastical fabrics of silk are quite fine though, and do have from 40 to 60 shots per inch in the weft.

We had a 40" wide warp, and it wove down to about 37" width, and I think it was mainly because of the construction of the weave. However, we had very little trouble with broken threads, so as long as this was not a problem, no stretcher or temple was used.

Our sample has not been washed and pressed as it should be. I would suggest that you wash it in luke-warm water, allow it to drip dry, and then steam press. I would suggest using a cloth in the steam pressing.

We have had many, many inquiries about weaving fabrics for the churches of today, and this is the reason that we featured this particular fabric. We hope that it will stimulate some of you to do some weaving of this type, and in particular to weave with silk, and see how rewarding your efforts with silk threads are.

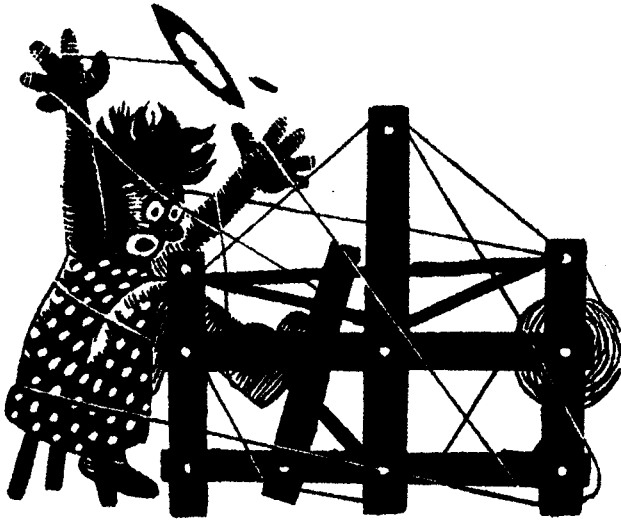
COST OF THE FABRIC:

We had an 8 hard warp, 40" wide, and from this length warp, we received about 7 yards and 1 or 2 inches of fabric, and it was about 37" wide.

In the warp, it took about 12 oz. of the 20/2 spun silk for warp, so the warp cost was \$7.20. The cost per yard was thus 90¢ per yard.

In the weft, in the 7 yards of the finished fabric, it took 1 lb. 15 oz. of silk for weft. Thus the weft cost was \$18.60, and so the weft cost per yard was \$2.66 for the 7 yards of fabric.

WARP COST PER YARD.....	\$.90
WEFT COST PER YARD.....	2.66
FABRIC COST PER YARD.....	<u>\$ 3.56</u>



drafts and designs

a guide for 5 to 12 harness weaves

Volume 10, Number 10, June, 1968

DIAGONAL SHADOWS:

This is an interesting 8 harness shadow weave that we have been experimenting with. Will have a different version of this in a future issue.

WARP THREADS:

There are two threads used in the warp, and they are alternated every other thread.

X - A cresland and wool tweed, which is heather grey with flecks of pink and pumpkin.

O - An all wool tweed of New Zealand wool which is heather gray-green, with flecks of tan, red and occasional aqua.

WEFT THREADS:

There are two threads used in the weft. One of these is the heather grey creslan and wool with flecks of pink and pumpkin.

The second thread used in the weft is one of the English rug wools in color #158, light olive.



THREADING DRAFT:

8									X	X	X	X
7								0	0	0	0	
6						X	X	X	X			
5					0	0	0	0				
4			X	X	X	X						
3			0	0	0	0						
2	X	X	X	X	X							
1	0	0	0	0	0							

DRAFTS AND DESIGNS

Published monthly (except July and August) by Robin & Russ Handweavers, 533 N. Adams St., McMinnville, Oregon.

SUBSCRIPTIONS: \$4.00 per year. Back issues or single copies, 50¢ each. Yearly subscriptions start with the September issue. If you subscribe after September, back issues from then on will be mailed to you, unless you specify that you want your subscription to start with the next September issue.

VOLUME 10, Number 10. June, 1968

REED USED:

An 8 dent reed was used, and it was double-sleyed, 2 ends per dent, or 16 threads per inch.

KEY TO THREADS IN THE WARP:

- X - Pink and Pumpkin, Cresland and wool
- O - Heather grey green wool tweed

TIE-UP DRAFT

8	0	0			0		
7			0	0		0	
6		0	0		0		
5	0			0		0	
4			0	0	0		
3	0	0				0	
2	0			0	0		
1		0	0			0	
	1	2	3	4	5	6	
				A	B		

TREADLING SEQUENCE:

Treadle #6, pink & pumpkin tweed
 Treadle #5, pink & pumpkin tweed
 Treadle #6, pink & pumpkin tweed
 Treadle #4, F-158, Olive 2 ply wool
 Treadle #6, pink & pumpkin tweed
 Treadle #5, pink & pumpkin tweed
 Treadle #6, pink & pumpkin tweed
 Treadle #3, F-158, Olive 2 ply wool
 Treadle #6, pink & pumpkin tweed
 Treadle #5, pink & pumpkin tweed
 Treadle #6, pink & pumpkin tweed
 Treadle #2, F-158, Olive 2 ply wool
 Treadle #6, pink & pumpkin tweed
 Treadle #5, pink & pumpkin tweed
 Treadle #6, pink & pumpkin tweed
 Treadle #1, F-158, Olive 2 ply wool
 END OF ONE COMPLETE PATTERN REPEAT.
 Repeat over and over as desired.
 There are 16 shots in one complete repeat of your pattern, which results in 4 of the diagonal green flecks.

COST OF THE THREADS USED:

1. Heather grey creslan & wool with pink and pumpkin flecks is \$3.20 per pound. It has 2400 yards per pound.
2. The heather grey green tweed with flecks of tan, red and aqua is a 1-1/4 run tweed, with 2,000 yards per lb., and is \$3.20 a lb.
3. Color #F-158, Light Olive rug wool is an English import. It comes in 3 1/2 oz. skeins and it is \$4.80 per lb.

COST OF THE FABRIC:

We had an 8 yard warp, 42" wide on the loom, and it took 1 lb. 3 oz. of the Pink and Pumpkin, and it took 1 lb. 9 oz. of the grey green tweed. Thus the total warp cost of 8 yards was \$8.80 or the cost per yard was \$1.10 per yard.

In the weft, we used 1 lb. 8 oz. of the pink and pumpkin tweed, and we used about 1 lb. 10 oz. of the ryagarn, English rug wool, color #158. Thus the total weft cost was \$12.60, and we had 7 yards of finished fabric. Thus the cost per yard was \$1.80 per yard for the weft.

WARP COST PER YARD..... \$ 1.10
 WEFT COST PER YARD..... 1.80
 FABRIC COST PER YARD..... \$ 2.90

MORE ABOUT THIS FABRIC:

The first thing to mention is that we definitely want to use a double beat sequence, as I give it here. Beat with the shed open after throwing the shuttle, change to the next shed, and beat again. This will help clear the shed and prevent cling of the warp threads. Just use an even, medium beat.

SUBSCRIPTION PRICE INCREASE AS OF SEPTEMBER, 1968

Remember, as of September 1, 1968, Drafts and Designs will be \$5.00 per yearly subscription. Anyone renewing or subscribing before that date, can do so for 1 or 2 years, at the regular price of \$4.00 per year.